



OSC Scientific Committee Meeting May 2013

Megan Milliken Biven

Gulf of Mexico

Megan.Milliken@boem.gov

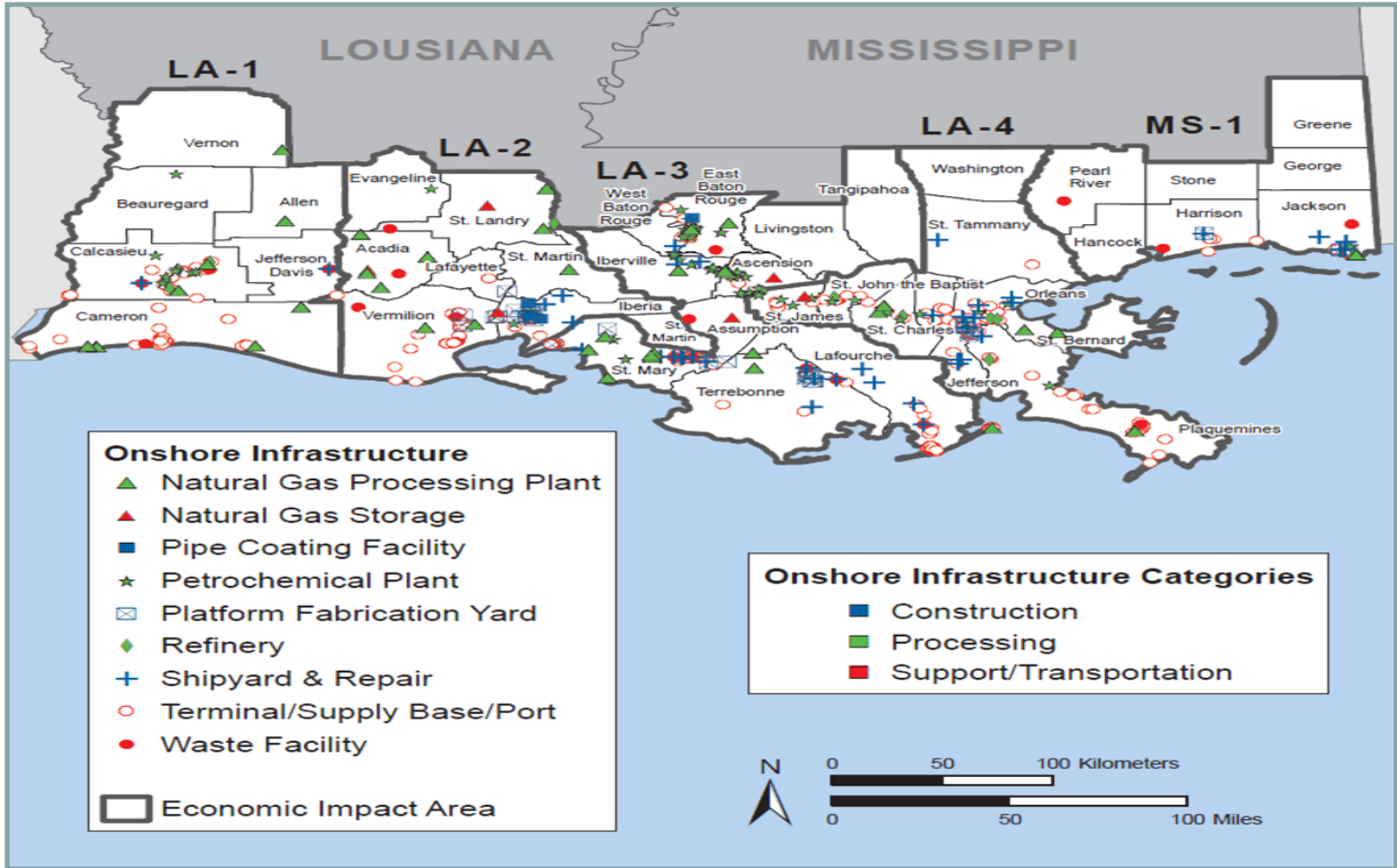
504-736-3228



Page #	Break-out	Title	Rank
29	SE	Testing and Assessment of the Effects of an Oil Spill on Coastal Archaeological Sites	4
33	SE	Coastal Land Loss and Oil & Gas Infrastructure	6
41	SE	Geo-Spatial Analysis of OCS Petroleum Effects on Gulf Coast Communities	9



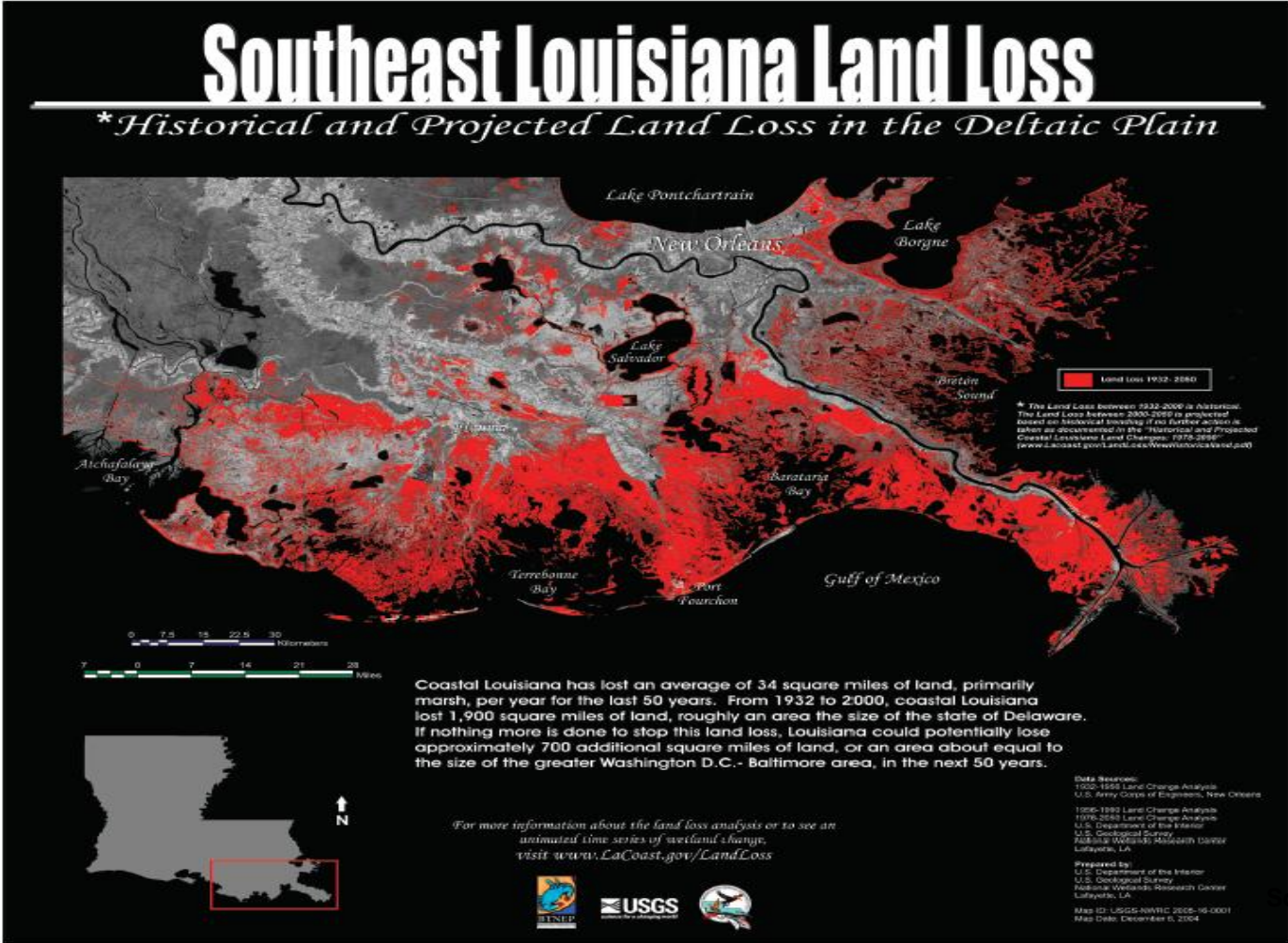
Louisiana Coastal Land Loss and Energy Infrastructure



Source:
BOEM

BOEM OCS Region: GOM

Tentative Ranking: 6__



source: USGS

BOEM OCS Region: GOM

Tentative Ranking: 6__



Louisiana Coastal Land Loss and Energy Infrastructure



BOEM OCS Region: GOM

Tentative Ranking: 6__

BOEM Information Need:

This study asks the questions of how coastal land loss and storm surges are currently impacting OCS infrastructure, how their preparations might be measured, and whether coastal industry is preparing for these impacts. Because of the large amount of OCS activity within the coastal areas of the state, these are particularly salient management issues.

Date Information is Required:

This research will advance the Bureau's cumulative analysis of the OCS leasing program, provide socioeconomic analysis to the Minerals Management Program and help the Bureau address several critical issues raised by the State of Louisiana in past 5-year and multi-sale EISs.

BOEM OCS Region: GOM

Tentative Ranking: 6__

Background:

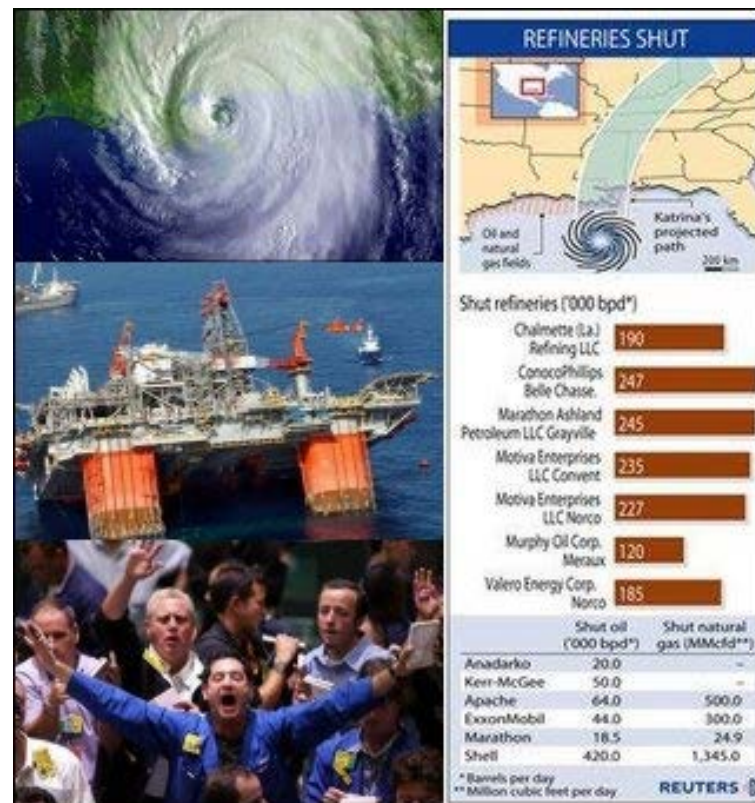
A) Relationship with Previous Work/Efforts

- OCS-Related Infrastructure in the Gulf of Mexico Factbook (2004-027 Contract # 01-02-CT-30955

- OCS-Related Infrastructure Fact Book, Volume 1: Post-Hurricane Impact Assessment (2011-043 Contract # M08AC12280)

- OCS-Related Infrastructure Fact Book, Volume 2: Communities in the Gulf of Mexico (2011-044 Contract # M08AC12280)

BOEM OCS Region: GOM



Tentative Ranking: 6__

Background:

B) Relationship with Current Work/Efforts

- Potential opportunity to pursue study through a partnership with the State of Louisiana or the Coastal Marine Institute to improve the State's own Cost/Benefit estimates.

- Potential opportunity to pursue study through a partnership with the U.S. Corps of Engineers to improve the Corps' own Cost/Benefit estimates.



Source: Blum and Roberts 2009

BOEM OCS Region: GOM

Tentative Ranking: 6__

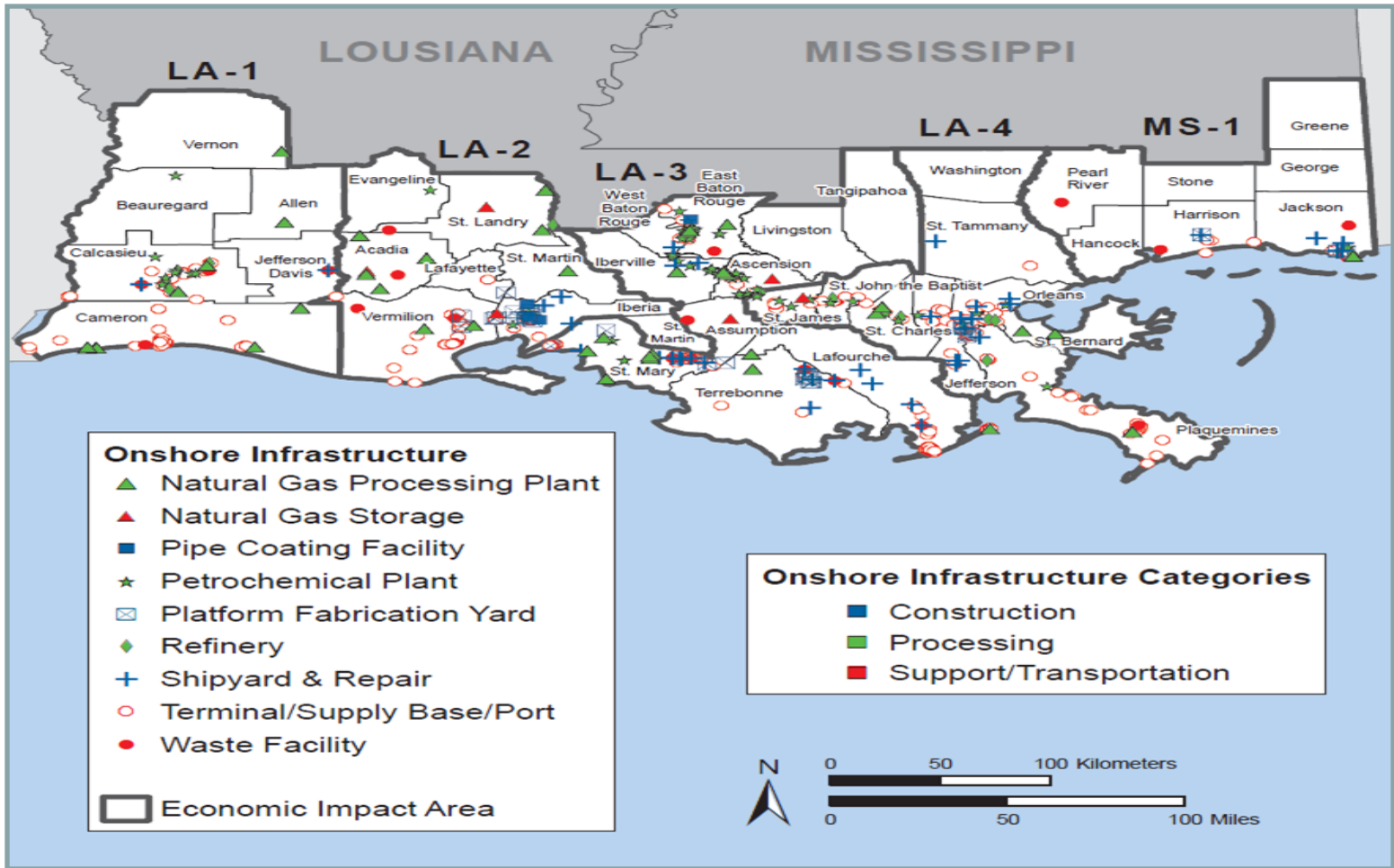


Source: Blum and Roberts 2009

BOEM OCS Region: GOM

Tentative Ranking: 6__

Louisiana Coastal Land Loss and Energy Infrastructure

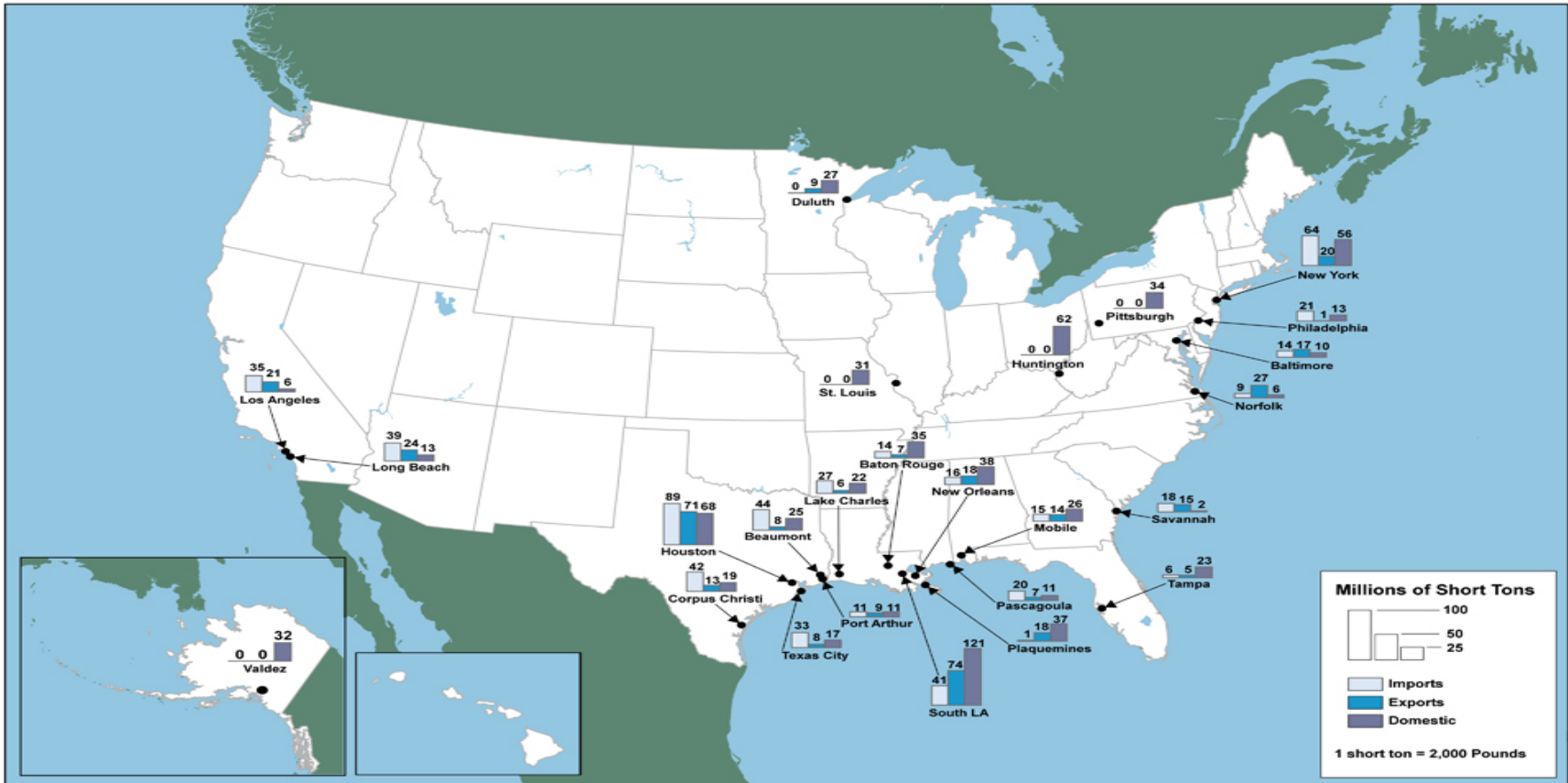


BOEM OCS Region: GOM

Tentative Ranking: 6__

Louisiana Coastal Land Loss and Energy Infrastructure

Top 25 Ports by Tonnage: 2010



Source: U.S. Army Corps of Engineers, *2010 Waterborne Commerce of the United States, Part 5, National Summaries* (New Orleans, LA: 2010), table 5-2, available at www.ndc.iwr.usace.army.mil/wcsc/wcsc.htm as of June 18, 2012.

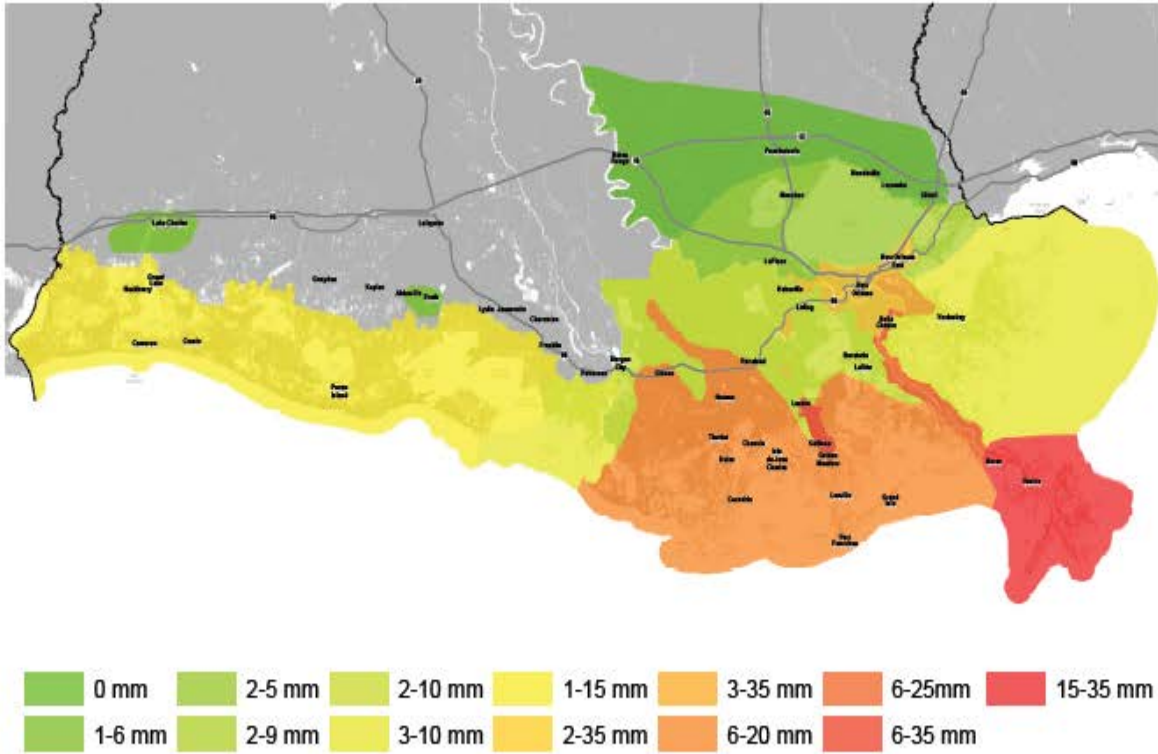
BOEM OCS Region: GOM

Tentative Ranking: 6__

Ranges of Coast Wide Annual Subsidence Rates

▶ **Figure 3.5**

Regional ranges of subsidence rates in mm/yr were used as inputs to the modeling analysis. The ranges depict both current values and predicted future values over 50 years.



Source: 2012 Coastal Master Plan

Study's Objectives:

1. Compile baseline measures of the oil and gas industry's efforts to mitigate land loss impacts for infrastructure and increased hurricane surge threats.
2. Provide BOEM an understanding of industry strategies and objectives to mitigate land loss impacts as well as identify industry trends so that BOEM can better forecast economic and infrastructure impacts..

Suggested Study's Methods:

- Conduct informal discussions with facility operators, business owners and other relevant personnel as well as representatives from industry groups on coastal land loss and hurricane surge preparations/mitigations.
- Perform a literature review of individual company plans and general industry mitigation plans for Louisiana coastal infrastructure.
- Develop a text database of discussion notes and other relevant materials (including relevant flood zone guidelines, FEMA flood program policy) covering the oil and gas and other industries and those reliant on the coastal system for current operations.



BOEM OCS Region

Tentative Ranking: __