

**U.S. Department of the Interior  
Bureau of Ocean Energy Management  
Gulf of Mexico OCS Region**

***SPECIAL INFORMATION***

---

September 2014

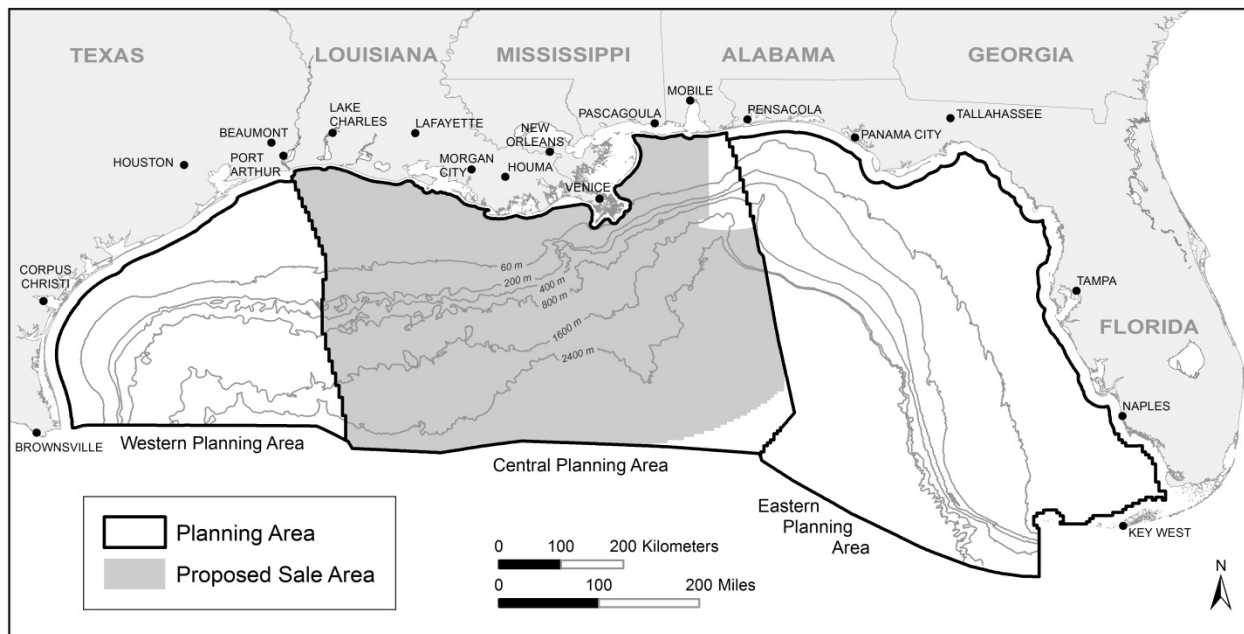
**BOEM Issues Notice of Availability  
of the Final Supplemental Environmental Impact Statement  
for Proposed Gulf of Mexico OCS Oil and Gas  
Central Planning Area Lease Sales 235, 241, and 247**

The U.S. Department of the Interior, Bureau of Ocean Energy Management (BOEM), announces the availability of the Final Supplemental Environmental Impact Statement (EIS) for proposed Central Planning Area (CPA) Lease Sales 235, 241, and 247. The proposed oil and gas lease sales are tentatively scheduled to be held in March 2015, 2016, and 2017, respectively, under the *Proposed Final Outer Continental Shelf Oil & Gas Leasing Program: 2012-2017*. This Supplemental EIS updates the analyses in the *Gulf of Mexico OCS Oil and Gas Lease Sales: 2012-2017; Western Planning Area Lease Sales 229, 233, 238, 246, and 248; Central Planning Area Lease Sales 227, 231, 235, 241, and 247, Final Environmental Impact Statement (2012-2017 WPA/CPA Multisale EIS; OCS EIS/EA BOEM 2012-019)* and in the *Gulf of Mexico OCS Oil and Gas Lease Sales: 2013-2014; Western Planning Area Lease Sale 233; Central Planning Area Lease Sale 231, Final Supplemental Environmental Impact Statement (OCS EIS/EA BOEM 2013-0118; WPA 233/CPA 231 Supplemental EIS)*. BOEM is proposing to offer for oil and gas leasing approximately 44.3 million acres of the total 66.45 million acres in the CPA, with the exception of whole and portions of blocks deferred by the Gulf of Mexico Energy Security Act of 2006 and blocks that are beyond the United States Exclusive Economic Zone in the area known as the northern portion of the Eastern Gap.

This Final Supplemental EIS also analyzes information on the baseline conditions and potential environmental effects of oil and natural gas leasing, exploration, development, and production in the CPA. BOEM conducted an extensive search for information pertinent to the lease sales, including consideration of the *Deepwater Horizon* explosion, oil spill, and response; surveys of scientific journals and credible scientific data and information from academic institutions and Federal, State, and local agencies; and interviews with personnel from academic institutions and Federal, State, and local agencies. BOEM has examined the potential impacts of routine activities and accidental events, including a possible low-probability catastrophic event, associated with the proposed lease sales, as well as the proposed lease sales' incremental contribution to the cumulative impacts on environmental and socioeconomic resources. The oil and gas resource estimates and scenario information for this Final Supplemental EIS are presented as a range that would encompass the resources and activities estimated for the proposed CPA lease sales.

BOEM published in the August 23, 2013, *Federal Register*, the Notice of Intent (NOI) to prepare a Supplemental EIS for the proposed CPA lease sales. The NOI sought input on the scope of the Supplemental EIS, which covers the proposed CPA oil and gas lease sales offshore the States of Louisiana, Mississippi, and Alabama.

BOEM published in the March 24, 2014, *Federal Register*, the Notice of Availability of the Draft Supplemental EIS for proposed CPA Lease Sales 235, 241, and 247. The public review period was opened on March 21, 2014, and closed on May 5, 2014.



BOEM will be printing and distributing a very limited number of paper copies. In keeping with the Department of the Interior's mission of the protection of natural resources and to limit costs while ensuring the availability of the document to the public, BOEM will primarily distribute digital copies of the Final Supplemental EIS on compact discs. However, if you require a paper copy, BOEM will provide one upon request if copies are still available.

1. You may obtain a copy of the Final Supplemental EIS from the Bureau of Ocean Energy Management, Gulf of Mexico OCS Region, 1201 Elmwood Park Boulevard, New Orleans, Louisiana 70123-2394, Attention: Public Information Office (GM 335A), 1201 Elmwood Park Boulevard, Room 250, New Orleans, Louisiana 70123-2394 (1-800-200-GULF).
2. You may download or view the Final Supplemental EIS on BOEM's website at <http://www.boem.gov/nepaprocess/>.

If you have questions, please call Mr. Gary D. Goeke at 504-736-3233.