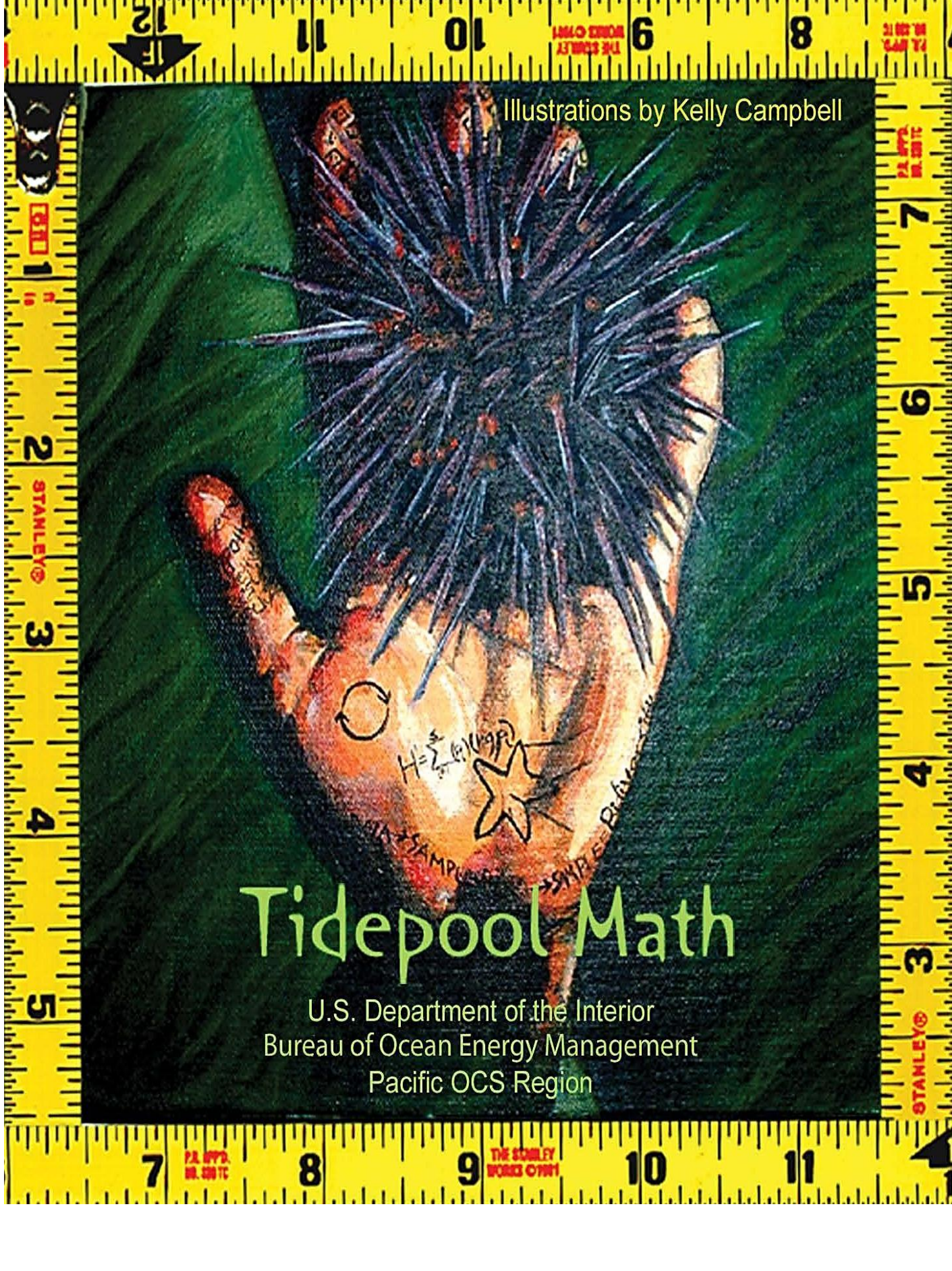


Illustrations by Kelly Campbell

# Tidepool Math

U.S. Department of the Interior  
Bureau of Ocean Energy Management  
Pacific OCS Region



# Tidepool Math

## High school

### Process Skills Used in this Lesson

1. Be able to set up a random, systematic, and targeted sampling approach for a fixed plot of plants or animals.
2. Be able to determine whether a count of individuals or a percent cover measurement is best to determine abundance for a given plot.
3. Be able to compare two or more locations and determine if the living communities are statistically different from each other.



### Learning Objectives

- Increased awareness of the diversity of animals and plants in rocky intertidal habitats.
- Understand the differences between random, systematic and targeted sampling approaches
- Compare estimates, counts, and means. Discuss outliers.
- Understand simple statistical concepts and tools that are used to design a study and analyze environmental data.

## Background for Teachers



Proper adherence to the Scientific Method involves defining the question to be studied and setting up a study design which will answer the question being asked. Fundamental to applying scientific method is the student's ability to define hypotheses about the phenomenon, system or process being studied. The null hypothesis (e.g., there is no statistical difference between two populations) is central to proper scientific study as well as the basis for statistical analytic models.

In this first exercise, students will be shown how the study design, whether random, systematic or targeted, will answer different questions and have different advantages and disadvantages. This basic concept can be visually demonstrated using a standard rocky intertidal plot sampling design.

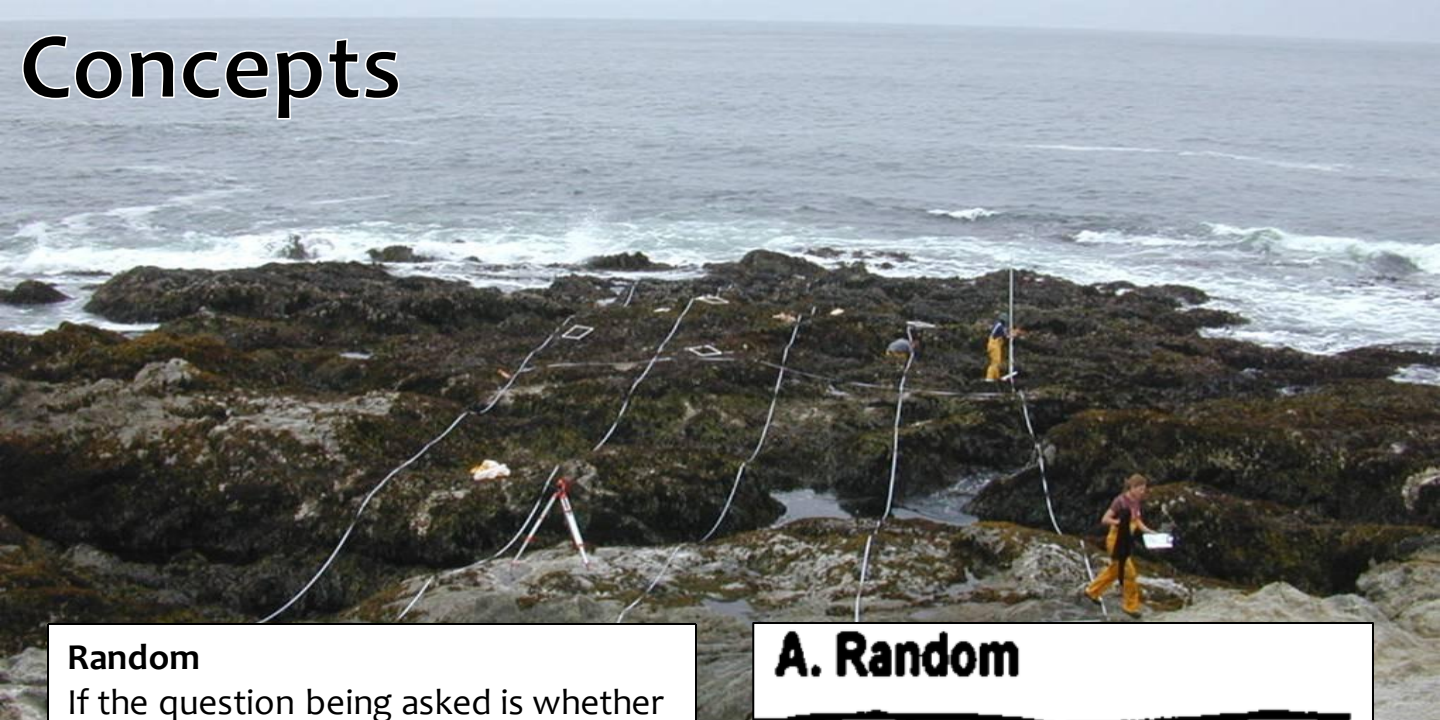
In the second and third exercises, the student is challenged to pose a hypothesis about the distribution of plants or animals that live in the rocky intertidal coastal environment. Students are shown the application of statistics and statistical analysis to contemporary problems in marine ecology.

Abundance of a given population is determined either through counts or measuring percent cover. In a rocky intertidal habitat, both are used. Percent cover is used for algae, densely populated animal communities such as barnacles, and colonial

animals such as small anemones. Counts of individuals are used to determine the abundance of different invertebrates like snails, and sea stars. Depending on the study and the scale of the effort, mussels may be sampled either with counts or cover.

Biologists with several agencies and universities currently monitor rocky intertidal habitats along the California coast. This group, MARINE, or the Multi-Agency Rocky Intertidal Network, has established 55 permanent sites where they sample every fall and spring. Species photographed in fixed plots include mussels, anemones, acorn barnacles, gooseneck barnacles, turf algae, rockweed, and red fleshy algae. Notes about the plots are taken by biologists at the site but the "counts" of the species in the photos are done in the laboratory. Each photo is displayed on a computer screen and overlaid with 100 points. Species under each point are counted to determine the percent cover of each species identified. Species counted and measured as individuals in fixed plots include sea stars, owl limpets, and black abalone. Several varieties of small invertebrates such as snails and chitons are also counted and measured in the photoplots by biologists at the site.

# Concepts

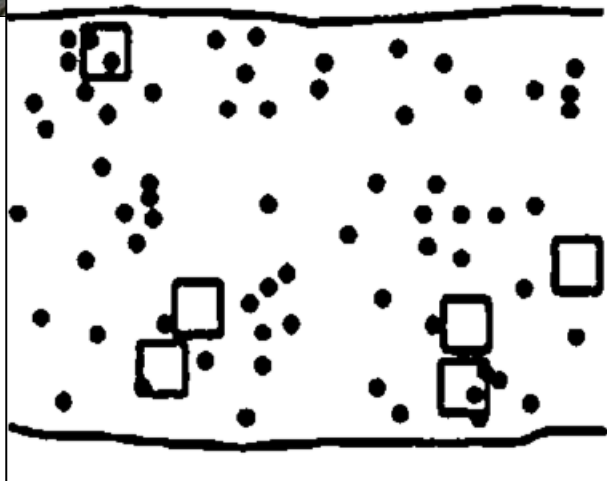


## Random

If the question being asked is whether populations (numbers or density of animals) differ at different locations, the focus of the sampling design is to obtain representative samples of the populations being compared. The best statistical design for this questions is random sampling within each population (or plot). This reduces the bias that the scientist might make in assigning sampling locations within a plot to denser or sparser areas, unintentionally avoiding edges of the study area, unintentionally aggregating samples etc. A disadvantage of random sampling is that a large number of samples may be required for good statistical power in populations that are patchy or unevenly distributed.

Random number tables can be used to select numbers which can be used, for example, as coordinates for transect lines.

## A. Random



Random sampling is not always feasible, either due to time or physical constraints. Completely random sampling may not be appropriate if populations are obviously distributed in a systematic fashion or if the question being asked is about particular habitats and not the general community. In those latter cases, Systematic (Also known as Stratified Random) sampling is a better choice. Other approaches commonly used include systematic sampling and targeted sampling.

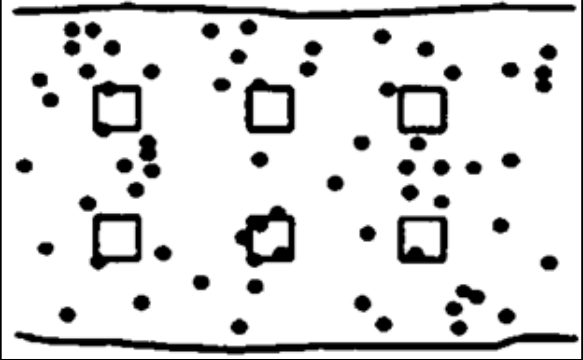
# Concepts Con't

## Systematic

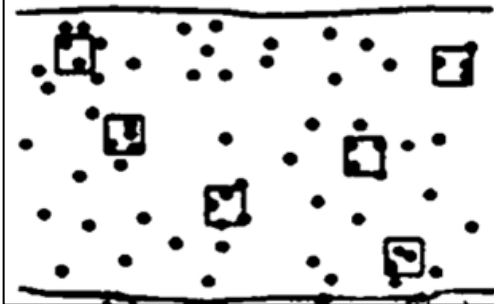
A systematic sampling design places sampling units uniformly through the study site. Transect lines spaced at regular intervals is an example of a systematic approach. The advantages are that it can be much easier in practice to do, and the estimate of the mean may be more accurate than with random samples.

The main disadvantage is that it is not random, and therefore will not meet certain statistical test criteria.

## B. Systematic



## C. Targeted



## Targeted

The rocky intertidal sampling chosen for the MARINE core monitoring program is a targeted design. This design focuses the time spent by researchers on sampling targeted populations where the abundance of a given species of interest is highest. For example, photo plots are targeted in low intertidal mussel beds for mussels, and the high intertidal for barnacles.

This design is appropriate when certain species are being targeted for study. It is an unacceptable design when the questions asked is “what is the average density of a population in a habitat?”

This is a useful design in many biological habitats because species are often clustered by physical parameters such as tidal height, distance from shore, water depth, distance from a stream, elevation, etc.

To reduce bias in the sampling, it is best if individual sampling units are randomly placed within a targeted population. For example, in the MARINE programs, five photo quadrats were randomly placed within each defined target population.

# EXERCISE 1: Sampling a tidepool plot

## Learning Objectives

Determine the abundance of a plot by comparing estimates, counts, means, and percent cover

## Process Skills

Determine whether a count of individuals or a percent cover measurement is best used when evaluating abundance.

### Introduction:

**Discuss** the term *abundance* and how one might measure abundance.

**Discuss** the concept of *species richness* and *biodiversity* (see **glossary**).

- Biodiversity is an important concept in ecology. It relates to species richness and the relative distribution of the numbers of individuals among all the species present in the area. It is a term students will hear about and read about in contemporary articles about the earth's environment. In general, higher biodiversity is characteristic of more mature and less disturbed habitats.

**Note** that biodiversity is not synonymous with species richness although habitats with high biodiversity tend to have many more species than habitats with low biodiversity.

The easiest way to measure the abundance of *discrete individuals* is to count them. However, if the item being counted is a colonial animal or plant, it is very hard to count them. A measure of *percent cover*, or amount of area covered by that species, is used to determine abundance.

Look at the photos provided. In the photo of mussels, these individuals can be counted. In the field, scientists both measure and count individual animals such as mussels, limpets, sea stars and abalone.

In the photo of anemones, this colonial form grows so close together and has attached so many shell particles that it is almost impossible to identify individual anemones. The only appropriate way to measure abundance is by looking at percent cover. If the anemones covered the entire plot, it would be recorded as 100% cover.

## Classroom Activity 1: Counting Mussels

**Materials:** Enlarged photo of mussel plot (2' by 3'), sheet of laminate, dry erase markers

- Have the students estimate the number of mussels in the first plot.
- Lay the photo on the floor and cover with laminate.
- Ask four students to count the mussels in each quadrant and add the values of the four quadrants to get a total for the entire plot.
- Compare the total number estimated for the plot to the values obtained by taking a value for any one quadrant and multiplying by 4. Determine the mean value of mussels for each quadrant. Discuss any *outliers*.

**Preparation:** enlarge mussel plot photo by 2' by 3' and divide into quarters with masking tape



**Preparation:** Enlarge anemone plot to 2' by 3' and score 2' by 3' sheet of laminate with 100 evenly spaced points



## Classroom Activity 2: Estimating Percent Cover

**Materials:** Enlarged photo of anemone (2' by 3'), sheet of laminate, dry erase markers

- Looking at the photo, ask each student to estimate the percent cover of anemones and green algae (*Ulva*).
- Overlay laminate with 100 evenly spaced points. Ask several students to identify what is under each point 1) anemone, 2) green algae or 3) other (mussel, rock, sand, etc.)
- Calculate percentages for "1", "2", and "3", or percent cover (for example: # of "1's" / 100).
- Compare calculated percentages with the original estimates.

# Exercise 2: Methodology: Random, Systematic, and Targeted sampling.

## Learning Objectives

Take a sample of a mussel plot using random, systematic, and targeted sampling approaches.

## Process Skills

Compare three sampling schemes; random, systematic, and targeted.

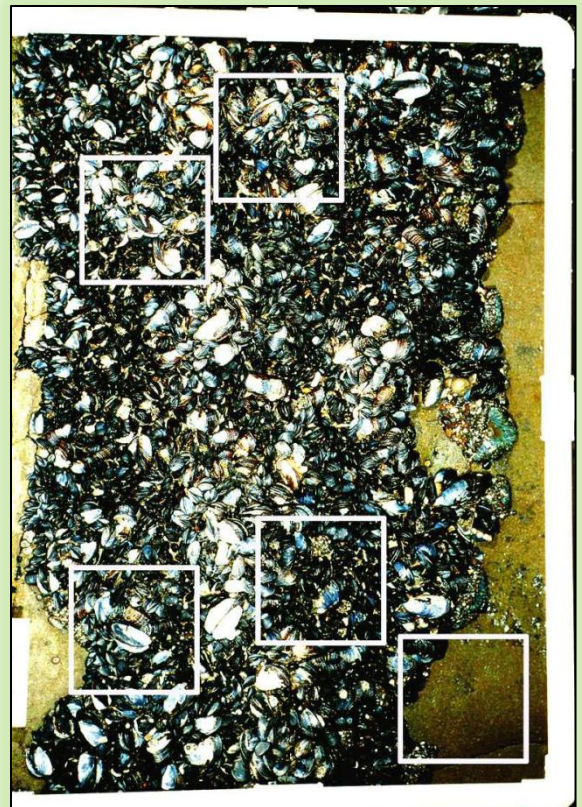
**Note:** In order to demonstrate this concept in the classroom setting, we are constructing a hypothetical sampling within the mussel photo, assuming that the 2' by 3' plot is representative of the entire habitat site. Realistically this would be done on a much larger scale. Explain to the class that normally this type of sampling would be done with a plot encompassing an entire habitat.

## Classroom Activity 3:

**Materials:** Enlarged mussel photo, dry erase markers, 5 small laminate 2" squares

- Place enlarged 2'x3' mussel photo on the floor.
- Place measuring tapes or yard sticks along the x and y axis of your photo.
- Use a random number table to generate 5 numbers between 1 and 25 and 5 numbers between 1 and 36. Pair numbers to generate 5 coordinates which can be marked on the laminate.
- Make 5 sampling "squares" by cutting laminate into 2" squares.
- Lay the 5 squares onto the photo using the paired coordinates to locate the upper left corner of each square. Count mussels under each square. Add numbers and calculate a mean.

**Preparation:** cut sheet of laminate into five 6" squares, (note: the size of the square will change according to the size of enlarged photo) Enlarge mussel plot photo to 2' by 3' (if not done with previous exercise)





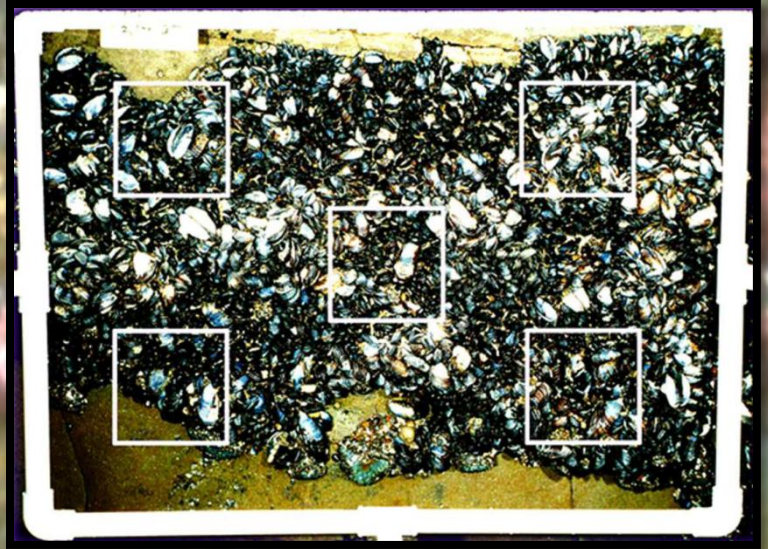
# CLASSROOM ACTIVITY 4:

Sample the plot systematically.

**Materials:** Enlarged mussel photo, dry-erase markers, 5 laminate 6" squares.

- Place the five squares at regular intervals on the plot like a "five" on a dice. Measure distance between the squares so that they are the same distances apart.
- Record the mussels counted under each square. Calculate the mean.

Preparation: cut sheet of laminate into five 6" squares, Enlarge mussel plot photo to 2' by 3' (if not done with previous exercise)

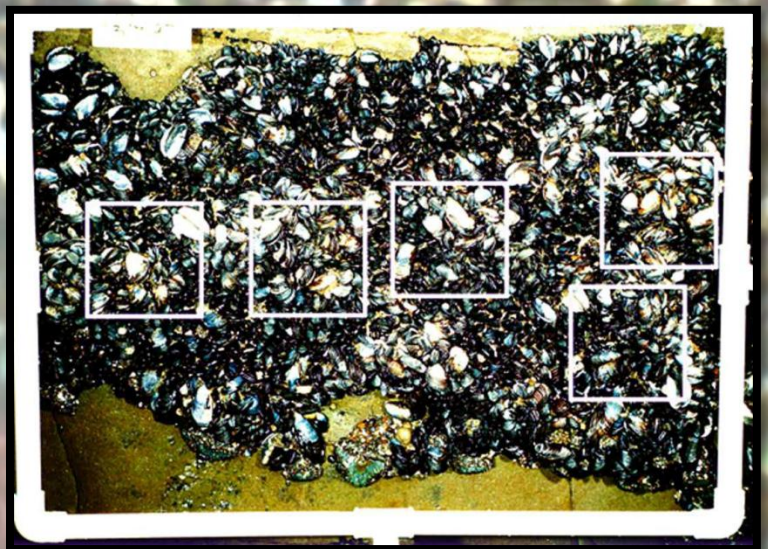


# CLASSROOM ACTIVITY 5: Sample the plot with a targeted scheme.

**Materials:** Enlarges mussel photo, dry-erase marker, 5 small laminate squares

- Determine where the mussels are concentrated on the photo. Generate random number pairs which only fall within this area.
- Place the squares randomly within the targeted area.
- Record the mussels counted under each square. Calculate the mean.

Preparation: cut sheet of laminate into five 6" squares, Enlarge mussel plot photo to 2' by 3' (if not done with previous exercise)



Compare the three sampling schemes with the original counts of mussels in the plot. Determine which sampling method best describes the number of mussels in the plot.

# Exercise 3: Species Diversity Index

## Learning Objectives

Compare the species richness and species diversity at two intertidal site (photoquadrats).

## Process Skills

Calculate a species diversity index (a mathematical index or measure of diversity).

### Introduction:

The Shannon-Weiner Diversity Index is a simple index that is used frequently in ecological analyses to calculate *biodiversity*. It is calculated by the following formula:

$$H' = \sum_{i=1}^s (p_i)(\log p_i)$$

Where  $s$  is species richness and  $p_i$  is the proportion of each organism in the photoquadrat.

Species richness is simply the number of different species counted in all samples for each photoquadrat.

## Classroom Activity 6: Calculating Biodiversity

**Materials:** Two large laminated photoquadrats (separate locations), small 6" sample squares, data recording sheets, random number table.

1. **Sample the mussel plot randomly.**
  - a. Place enlarged 2'x3' mussel photo on the floor.
  - b. Place measuring tapes or yardsticks along the x and y axis of your photo.
  - c. Use a random number table to generate 5 numbers between 1 and 24 and 5 numbers between 1 and 36. Pair numbers to generate 5 coordinates which can be marked on the laminate.

- d. Make 5 sampling "squares" by cutting laminate into 6" squares and covering edges with masking tape.
- e. Lay the five squares onto the photo using the paired coordinates to locate the upper left corner of the square. Count the number or percent cover of each separate species under each square and record on data sheet.

**2. Calculate the Shannon-Weiner Species Diversity Index for each photoquadrat.**

**3. Compare a) the species richness and; b) Shannon-Weiner Diversity Index of the two photoquadrats.**

# Exercise 4: Statistical Analysis of Photoquadrats

## Learning Objectives

Compare mean density of mussels (or other abundant species) from two locations

## Process Skills

Determine if there is a statistically significant difference in mean density of mussels in different locations

### Introduction:

This exercise compares the species richness and species diversity at two intertidal sites (photoquadrats). The mean densities of populations of mussels (students can select other abundant species as options) from two locations (photoquadrats) will be compared. Students will determine if there is a statistically significant difference in the mean (average) density (numbers) of mussels.

**Hypothesis:** There is no difference between the two locations' (photoquadrats) average number of mussels (or other organism selected).

**Materials:** Two large laminated photoquadrats (separate locations), small 2" sample squares, data recording sheets, random number table, Analysis of Variance (ANOVA) worksheet, F statistic Table.

#### 1. Sample the mussel plot randomly

- Place enlarged 2'x3' mussel photo on the floor.
- Place measuring tapes or yardsticks along the x and y axis of your photo.
- Use a random number table to generate 5 numbers between 1 and 24 and 5 numbers between 1 and 36. Pair numbers to generate 5 coordinates which can be marked on the laminate.
- Make 5 sampling "squares" by cutting laminate into 2" squares and covering edges with masking tape.

e. Lay the five squares onto the photo using the paired coordinates to locate the upper left corner of the square. Count mussels under each square and record on data sheet.

**2. Using the ANOVA worksheet, calculate the means and variances (total, within, and between), and the F statistic. Using the F table, look up whether the F statistic is significant.**

**3. Compare the original null hypothesis (there is no statistical difference between the two populations) with the result from the F table.**

# Glossary

**Abundance:** a measure of the size of the population. Abundance is measured by counting individuals (density) per unit area (square meter), or by determining the amount of area covered (percent cover). Density is the most common measure of abundance for animals such as sea stars and abalone since individuals are widely spaced and easily counted. For animals such as colonial anemones and for many plants such as sea lettuce, rockweed and coralline algae, percent cover is better measure of abundance.

**Species Richness:** the total number of different species in a community. Undisturbed communities in habitats such as mussel beds will have a large number of different kinds of plants and animals species. The way to determine species richness is to take a complete inventory of all the different species in an area.

**Biodiversity:** the total number of different species in a community. Undisturbed communities in habitats such as mussel beds will have a large number of different kinds of plants and animal species.

**Percent Cover:** measure of abundance found by determining the amount of area being occupied by a given species.

**Density:** measure of abundance found by counting individuals in a unit area (e.g. square meter).

**Discrete individuals:** individual animals or plants that are widely enough spaced or distinctive enough to be counted.

**Outliers:** a term referring to data which does not appear to group with the majority of the data. For example, in a list of numbers—1,2,4,2,6,3,56—”56” is an outlier. What you do with that outlier requires critical thinking. An outlier may be a data point recorded incorrectly. (e.g., typographic error) or it may represent a completely valid point. For example, if plotting population data locates a gray whale in Oklahoma City, it can be assumed to be an erroneous point and should be tossed. However, If you want to estimate the size of a population and counts of sample plots are: 0, 113, 114, 117, 124, 128, 130, 500– neither of the outliers (in this case, “0” and “500”) should be thrown out without checking back with the person recording the data because watch number may be a valid count and is needed to accurately estimate the total population.

# Science in the Tidepool

## Analysis of Variance (ANOVA)

### Student Worksheet No. 1

Photoquadrat <sub>A</sub> (Site) No. 1	Photoquadrat <sub>B</sub> (Site) No. 2	Photoquadrat <sub>C</sub> (Site) No. 3	
Sample 1 = $X_A$ $X_A^2 =$	Sample 1 = $X_B$ $X_B^2 =$	Sample 1 = $X_C$ $X_C^2 =$	
Sample 2 = $X_A$ $X_A^2 =$	Sample 2 = $X_B$ $X_B^2 =$	Sample 2 = $X_C$ $X_C^2 =$	
Sample 3 = $X_A$ $X_A^2 =$	Sample 3 = $X_B$ $X_B^2 =$	Sample 3 = $X_C$ $X_C^2 =$	
Sample 4 = $X_A$ $X_A^2 =$	Sample 4 = $X_B$ $X_B^2 =$	Sample 4 = $X_C$ $X_C^2 =$	
Sample 5 = $X_A$ $X_A^2 =$	Sample 5 = $X_B$ $X_B^2 =$	Sample 5 = $X_C$ $X_C^2 =$	
$\sum X_A =$	$\sum X_b =$	$\sum X_c =$	$\sum X = \sum X_A +$ $\sum X_b + \sum X_c$
$\sum X_A^2 =$	$\sum X_B^2 =$	$\sum X_C^2 =$	$\sum X^2 = \sum X_A^2 +$ $\sum X_B^2 + \sum X_C^2$
$N_A = 5$	$N_B = 5$	$N_C = 5$	$N$ (total number of samples) = $N_A + N_B$ + $N_C$

$X$  is the number of mussels (or other organisms) counted.

# Science in the Tidepool

## Analysis of Variance (ANOVA)

### Student Worksheet No. 2

Step 1. Calculate Variances (Sum of Squares, SS) from ANOVA Worksheet No. 1

$$SS_{\text{Total}} = \sum X^2 - \frac{(\sum X)^2}{N}$$

$$SS_{\text{Between}} = \frac{(\sum X_A)^2}{N_A} + \frac{(\sum X_B)^2}{N_B} + \frac{(\sum X_C)^2}{N_C} + \dots$$

$$SS_{\text{Within}} = SS_{\text{Total}} - SS_{\text{Between}}$$

Step 2. Complete the Anova Table

Variance Source	Degrees of Freedom	Sum of Squares (SS)	Mean Square
Between	1 (for 2 photoquadrats)	$SS_{\text{Between}}$	$\frac{SS_{\text{Between}}}{1} =$
Within	8	$SS_{\text{Within}}$	$\frac{SS_{\text{Within}}}{8} =$
Total	$N - 1 = 9$	$SS_{\text{Total}}$	

Step 3. Calculate the F Statistic

$$F_{1,8} = \frac{\text{MeanSquare}_{\text{Between}}}{\text{MeanSquare}_{\text{Within}}} =$$

Where  $F_{1,8}$  subscripts indicate the degrees of freedom for this analysis.

Step 4. Look up F in Table.

## A-1 RANDOM NUMBERS

10	09	73	25	33	76	52	01	35	86	34	67	35	48	76	80	95	90	91	17	39	29	27	49	45
37	54	20	48	05	64	89	47	42	96	24	80	52	40	37	20	63	61	04	02	00	82	29	16	65
08	42	26	89	53	19	64	50	93	03	23	20	90	25	60	15	95	33	47	64	35	08	03	36	06
99	01	90	25	29	09	37	67	07	15	38	31	13	11	65	88	67	67	43	97	04	43	62	76	59
12	80	79	99	70	80	15	73	61	47	64	03	23	66	53	98	95	11	68	77	12	17	17	68	33
66	06	57	47	17	34	07	27	68	50	36	69	73	61	70	65	81	33	98	85	11	19	92	91	70
31	06	01	08	05	45	57	18	24	06	35	30	34	26	14	86	79	90	74	39	23	40	30	97	32
85	26	97	76	02	02	05	16	56	92	68	66	57	48	18	73	05	38	52	47	18	62	38	85	79
63	57	33	21	35	05	32	54	70	48	90	55	35	75	48	28	46	82	87	09	83	49	12	56	24
73	79	64	57	53	03	52	96	47	78	35	80	83	42	82	60	93	52	03	44	35	27	38	84	35
98	52	01	77	67	14	90	56	86	07	22	10	94	05	58	60	97	09	34	33	50	50	07	39	98
11	80	50	54	31	39	80	82	77	32	50	72	56	82	48	29	40	52	42	01	52	77	56	78	51
83	45	29	96	34	06	28	89	80	83	13	74	67	00	78	18	47	54	06	10	68	71	17	78	17
88	68	54	02	00	86	50	75	84	01	36	76	66	79	51	90	36	47	64	93	29	60	91	10	62
99	59	46	73	48	87	51	76	49	69	91	82	60	89	28	93	78	56	13	68	23	47	83	41	13
65	48	11	76	74	17	46	85	09	50	58	04	77	69	74	73	03	95	71	86	40	21	81	65	44
80	12	43	56	35	17	72	70	80	15	45	31	82	23	74	21	11	57	82	53	14	38	55	37	63
74	35	09	98	17	77	40	27	72	14	43	23	60	02	10	45	52	16	42	37	96	28	60	26	55
69	91	62	68	03	66	25	22	91	48	36	93	68	72	03	76	62	11	39	90	94	40	05	64	18
09	89	32	05	05	14	22	56	85	14	46	42	75	67	88	96	29	77	88	22	54	38	21	45	98
91	49	91	45	23	68	47	92	76	86	46	16	28	35	54	94	75	08	99	23	37	08	92	00	48
80	33	69	45	98	26	94	03	68	58	70	29	73	41	35	53	14	03	33	40	42	05	08	23	41
44	10	48	19	49	85	15	74	79	54	32	97	92	65	75	57	60	04	08	81	22	22	20	64	13
12	55	07	37	42	11	10	00	20	40	12	86	07	46	97	96	64	48	94	39	28	70	72	58	15
63	60	64	93	29	16	50	53	44	84	40	21	95	25	63	43	65	17	70	82	07	20	73	17	90
61	19	69	04	46	26	45	74	77	74	51	92	43	37	29	65	39	45	95	93	42	58	26	05	27
15	47	44	52	66	95	27	07	99	53	59	36	78	38	48	82	39	61	01	18	33	21	15	94	66
94	55	72	85	73	67	89	75	43	87	54	62	24	44	31	91	19	04	25	92	92	92	74	59	73
42	48	11	62	13	97	34	40	87	21	16	86	84	87	67	03	07	11	20	59	25	70	14	66	70
23	52	37	83	17	73	20	88	98	37	68	93	59	14	16	26	25	22	96	63	05	52	28	25	62
04	49	35	24	94	75	24	63	38	24	45	86	25	10	25	61	96	27	93	35	65	33	71	24	72
00	54	99	76	54	64	05	18	81	59	96	11	96	38	96	54	69	28	23	91	23	28	72	95	29
35	96	31	53	07	26	89	80	93	54	33	35	13	54	62	77	97	45	00	24	90	10	33	93	33
59	80	80	83	91	45	42	72	68	42	83	60	94	97	00	13	02	12	48	92	78	56	52	01	06
46	05	88	52	36	01	39	09	22	86	77	28	14	40	77	93	91	08	36	47	70	61	74	29	41
32	17	90	05	97	87	37	92	52	41	05	56	70	70	07	86	74	31	71	57	85	39	41	18	38
69	23	46	14	06	20	11	74	52	04	15	95	66	00	00	18	74	39	24	23	97	11	89	63	38
19	56	54	14	30	01	75	87	53	79	40	41	92	15	85	66	67	43	68	06	84	96	28	52	07
45	15	51	49	38	19	47	60	72	46	43	66	79	45	43	59	04	79	00	33	20	82	66	95	41
94	86	43	19	94	36	16	81	08	51	34	88	88	15	53	01	54	03	54	56	05	01	45	11	76
98	08	62	48	26	45	24	02	84	04	44	99	90	88	96	39	09	47	34	07	35	44	13	18	80
33	18	51	62	32	41	94	15	09	49	89	43	54	85	81	88	69	54	19	94	37	54	87	30	43
80	95	10	04	06	96	38	27	07	74	20	15	12	33	87	25	01	62	52	98	94	62	46	11	71
79	75	24	91	40	71	96	12	82	96	69	86	10	25	91	74	85	22	05	39	00	38	75	95	79
18	63	33	25	37	98	14	50	65	71	31	01	02	46	74	05	45	56	14	27	77	93	89	19	36
74	02	94	39	02	77	55	73	22	70	97	79	01	71	19	52	52	75	80	21	80	81	45	17	48
54	17	84	56	11	80	99	33	71	43	05	33	51	29	69	56	12	71	92	55	36	04	09	03	24
11	66	44	98	83	52	07	98	48	27	59	38	17	15	39	09	97	33	34	40	88	46	12	33	56
48	32	47	79	28	31	24	96	47	10	02	29	53	68	70	32	30	75	75	46	15	02	00	99	94
69	07	49	41	38	87	63	79	19	76	35	58	40	44	01	10	51	82	16	15	01	84	87	69	38

A-7a F DISTRIBUTION, UPPER 5 PER CENT POINTS ( $F_{.95}$ )

DEGREES OF FREEDOM FOR NUMERATOR

	1	2	3	4	5	6	7	8	9	10	12	15	20	24	30	40	60	120	$\infty$
1	161	200	216	225	230	234	237	239	241	242	244	246	248	249	250	251	252	253	254
2	18.5	19.0	19.2	19.2	19.3	19.3	19.4	19.4	19.4	19.4	19.4	19.4	19.4	19.5	19.5	19.5	19.5	19.5	19.5
3	10.1	9.55	9.28	9.12	9.01	8.94	8.89	8.85	8.81	8.79	8.74	8.70	8.66	8.64	8.62	8.59	8.57	8.55	8.53
4	7.71	6.94	6.59	6.39	6.26	6.16	6.09	6.04	6.00	5.96	5.91	5.86	5.80	5.77	5.75	5.72	5.69	5.66	5.63
5	6.61	5.79	5.41	5.19	5.05	4.95	4.88	4.82	4.77	4.74	4.68	4.62	4.56	4.53	4.50	4.46	4.43	4.40	4.37
6	5.99	5.14	4.76	4.53	4.39	4.28	4.21	4.15	4.10	4.06	4.00	3.94	3.87	3.84	3.81	3.77	3.74	3.70	3.67
7	5.59	4.74	4.35	4.12	3.97	3.87	3.79	3.73	3.68	3.64	3.57	3.51	3.44	3.41	3.38	3.34	3.30	3.27	3.23
8	5.32	4.46	4.07	3.84	3.69	3.58	3.50	3.44	3.39	3.35	3.28	3.22	3.15	3.12	3.08	3.04	3.01	2.97	2.93
9	5.12	4.26	3.86	3.63	3.48	3.37	3.29	3.23	3.18	3.14	3.07	3.01	2.94	2.90	2.86	2.83	2.79	2.75	2.71
10	4.96	4.10	3.71	3.48	3.33	3.22	3.14	3.07	3.02	2.98	2.91	2.85	2.77	2.74	2.70	2.66	2.62	2.58	2.54
11	4.84	3.98	3.59	3.36	3.20	3.09	3.01	2.95	2.90	2.85	2.79	2.72	2.65	2.61	2.57	2.53	2.49	2.45	2.40
12	4.75	3.89	3.49	3.26	3.11	3.00	2.91	2.85	2.80	2.75	2.69	2.62	2.54	2.51	2.47	2.43	2.38	2.34	2.30
13	4.67	3.81	3.41	3.18	3.03	2.92	2.83	2.77	2.71	2.67	2.60	2.53	2.46	2.42	2.38	2.34	2.30	2.25	2.21
14	4.60	3.74	3.34	3.11	2.96	2.85	2.76	2.70	2.65	2.60	2.53	2.46	2.39	2.35	2.31	2.27	2.22	2.18	2.13
15	4.54	3.68	3.29	3.06	2.90	2.79	2.71	2.64	2.59	2.54	2.48	2.40	2.33	2.29	2.25	2.20	2.16	2.11	2.07
16	4.49	3.63	3.24	3.01	2.85	2.74	2.66	2.59	2.54	2.49	2.42	2.35	2.28	2.24	2.19	2.15	2.11	2.06	2.01
17	4.45	3.59	3.20	2.96	2.81	2.70	2.61	2.55	2.49	2.45	2.38	2.31	2.23	2.19	2.15	2.10	2.06	2.01	1.96
18	4.41	3.55	3.16	2.93	2.77	2.66	2.58	2.51	2.46	2.41	2.34	2.27	2.19	2.15	2.11	2.06	2.02	1.97	1.92
19	4.38	3.52	3.13	2.90	2.74	2.63	2.54	2.48	2.42	2.38	2.31	2.23	2.16	2.11	2.07	2.03	1.98	1.93	1.88
20	4.35	3.49	3.10	2.87	2.71	2.60	2.51	2.45	2.39	2.35	2.28	2.20	2.12	2.08	2.04	1.99	1.95	1.90	1.84
21	4.32	3.47	3.07	2.84	2.68	2.57	2.49	2.42	2.37	2.32	2.25	2.18	2.10	2.05	2.01	1.96	1.92	1.87	1.81
22	4.30	3.44	3.05	2.82	2.66	2.55	2.46	2.40	2.34	2.30	2.23	2.15	2.07	2.03	1.98	1.94	1.89	1.84	1.78
23	4.28	3.42	3.03	2.80	2.64	2.53	2.44	2.37	2.32	2.27	2.20	2.13	2.05	2.01	1.96	1.91	1.86	1.81	1.76
24	4.26	3.40	3.01	2.78	2.62	2.51	2.42	2.36	2.30	2.25	2.18	2.11	2.03	1.98	1.94	1.89	1.84	1.79	1.73
25	4.24	3.39	2.99	2.76	2.60	2.49	2.40	2.34	2.28	2.24	2.16	2.09	2.01	1.96	1.92	1.87	1.82	1.77	1.71
30	4.17	3.32	2.92	2.69	2.53	2.42	2.33	2.27	2.21	2.16	2.09	2.01	1.93	1.89	1.84	1.79	1.74	1.68	1.62
40	4.08	3.23	2.84	2.61	2.45	2.34	2.25	2.18	2.12	2.08	2.00	1.92	1.84	1.79	1.74	1.69	1.64	1.58	1.51
60	4.00	3.15	2.76	2.53	2.37	2.25	2.17	2.10	2.04	1.99	1.92	1.84	1.75	1.70	1.65	1.59	1.53	1.47	1.39
120	3.92	3.07	2.68	2.45	2.29	2.18	2.09	2.02	1.96	1.91	1.83	1.75	1.66	1.61	1.55	1.50	1.43	1.35	1.25
$\infty$	3.84	3.00	2.60	2.37	2.21	2.10	2.01	1.94	1.88	1.83	1.75	1.67	1.57	1.52	1.46	1.39	1.32	1.22	1.00

DEGREES OF FREEDOM FOR DENOMINATOR

Interpolation should be performed using reciprocals of the degrees of freedom. By permission of Prof. E. S. Pearson from M. Merrington, C. M. Thompson, "Tables of percentage points of the inverted beta ( $F$ ) distribution," *Biometrika*, vol. 33 (1943), p. 73.



DEGREES OF FREEDOM FOR NUMERATOR

	1	2	3	4	5	6	7	8	9	10	12	15	20	24	30	40	60	120	$\infty$
1	4.052	5.000	5.403	5.625	5.764	5.859	5.928	5.982	6.023	6.056	6.106	6.157	6.209	6.235	6.261	6.287	6.313	6.339	6.366
2	98.5	99.0	99.2	99.2	99.3	99.3	99.4	99.4	99.4	99.4	99.4	99.4	99.4	99.5	99.5	99.5	99.5	99.5	99.5
3	34.1	30.8	29.5	28.7	28.2	27.9	27.7	27.5	27.3	27.2	27.1	26.9	26.7	26.6	26.5	26.4	26.3	26.2	26.1
4	21.2	18.0	16.7	16.0	15.5	15.2	15.0	14.8	14.7	14.5	14.4	14.2	14.0	13.9	13.8	13.7	13.7	13.6	13.5
5	16.3	13.3	12.1	11.4	11.0	10.7	10.5	10.3	10.2	10.1	9.89	9.72	9.55	9.47	9.38	9.29	9.20	9.11	9.02
6	13.7	10.9	9.78	9.15	8.75	8.47	8.26	8.10	7.98	7.87	7.72	7.56	7.40	7.31	7.23	7.14	7.06	6.97	6.88
7	12.2	9.55	8.45	7.85	7.46	7.19	6.99	6.84	6.72	6.62	6.47	6.31	6.16	6.07	5.99	5.91	5.82	5.74	5.65
8	11.3	8.65	7.59	7.01	6.63	6.37	6.18	6.03	5.91	5.81	5.67	5.52	5.36	5.28	5.20	5.12	5.03	4.95	4.86
9	10.6	8.02	6.99	6.42	6.06	5.80	5.61	5.47	5.35	5.26	5.11	4.96	4.81	4.73	4.65	4.57	4.48	4.40	4.31
10	10.0	7.56	6.55	5.99	5.64	5.39	5.20	5.06	4.94	4.85	4.71	4.56	4.41	4.33	4.25	4.17	4.08	4.00	3.91
11	9.65	7.21	6.22	5.67	5.32	5.07	4.89	4.74	4.63	4.54	4.40	4.25	4.10	4.02	3.94	3.86	3.78	3.69	3.60
12	9.33	6.93	5.95	5.41	5.06	4.82	4.64	4.50	4.39	4.30	4.16	4.01	3.86	3.78	3.70	3.62	3.54	3.45	3.36
13	9.07	6.70	5.74	5.21	4.86	4.62	4.44	4.30	4.19	4.10	3.96	3.82	3.66	3.59	3.51	3.43	3.34	3.25	3.17
14	8.86	6.51	5.56	5.04	4.70	4.46	4.28	4.14	4.03	3.94	3.80	3.66	3.51	3.43	3.35	3.27	3.18	3.09	3.00
15	8.68	6.36	5.42	4.89	4.56	4.32	4.14	4.00	3.89	3.80	3.67	3.52	3.37	3.29	3.21	3.13	3.05	2.96	2.87
16	8.53	6.23	5.29	4.77	4.44	4.20	4.03	3.89	3.78	3.69	3.55	3.41	3.26	3.18	3.10	3.02	2.93	2.84	2.75
17	8.40	6.11	5.19	4.67	4.34	4.10	3.93	3.79	3.68	3.59	3.46	3.31	3.16	3.08	3.00	2.92	2.83	2.75	2.65
18	8.29	6.01	5.09	4.58	4.25	4.01	3.84	3.71	3.60	3.51	3.37	3.23	3.08	3.00	2.92	2.84	2.75	2.66	2.57
19	8.19	5.93	5.01	4.50	4.17	3.94	3.77	3.63	3.52	3.43	3.30	3.15	3.00	2.92	2.84	2.76	2.67	2.58	2.49
20	8.10	5.85	4.94	4.43	4.10	3.87	3.70	3.56	3.46	3.37	3.23	3.09	2.94	2.86	2.78	2.69	2.61	2.52	2.42
21	8.02	5.78	4.87	4.37	4.04	3.81	3.64	3.51	3.40	3.31	3.17	3.03	2.88	2.80	2.72	2.64	2.55	2.46	2.36
22	7.95	5.72	4.82	4.31	3.99	3.76	3.59	3.45	3.35	3.26	3.12	2.98	2.83	2.75	2.67	2.58	2.50	2.40	2.31
23	7.88	5.66	4.76	4.26	3.94	3.71	3.54	3.41	3.30	3.21	3.07	2.93	2.78	2.70	2.62	2.54	2.45	2.35	2.26
24	7.82	5.61	4.72	4.22	3.90	3.67	3.50	3.36	3.26	3.17	3.03	2.89	2.74	2.66	2.58	2.49	2.40	2.31	2.21
25	7.77	5.57	4.68	4.18	3.86	3.63	3.46	3.32	3.22	3.13	2.99	2.85	2.70	2.62	2.53	2.45	2.36	2.27	2.17
30	7.56	5.39	4.51	4.02	3.70	3.47	3.30	3.17	3.07	2.98	2.84	2.70	2.55	2.47	2.39	2.30	2.21	2.11	2.01
40	7.31	5.18	4.31	3.83	3.51	3.29	3.12	2.99	2.89	2.80	2.66	2.52	2.37	2.29	2.20	2.11	2.02	1.92	1.80
60	7.08	4.98	4.13	3.65	3.34	3.12	2.95	2.82	2.72	2.63	2.50	2.35	2.20	2.12	2.03	1.94	1.84	1.73	1.60
120	6.85	4.79	3.95	3.48	3.17	2.96	2.79	2.66	2.56	2.47	2.34	2.19	2.03	1.95	1.86	1.76	1.66	1.53	1.38
$\infty$	6.63	4.61	3.78	3.32	3.02	2.80	2.64	2.51	2.41	2.32	2.18	2.04	1.88	1.79	1.70	1.59	1.47	1.32	1.00

DEGREES OF FREEDOM FOR DENOMINATOR

Interpolation should be performed using reciprocals of the degrees of freedom. By permission of Prof. E. S. Pearson from M. Merrington, C. M. Thompson, "Tables of percentage points of the inverted beta ( $F$ ) distribution," *Biometrika*, vol. 33 (1943), p. 73.

Material developed by:

Mary Elaine Dunaway,  
Kelly Campbell and Fred Piltz  
Bureau of Ocean Energy Management  
770 Paseo Camarillo  
Camarillo, CA 93010

Illustrations by Kelly Campbell

Adapted from Methods for Performing,  
Monitoring, Impact, and Ecological Studies on  
Rocky Shores  
By Steve Murray, Richard Ambrose and  
Megan Dethier



**BOEM**  
BUREAU OF OCEAN ENERGY MANAGEMENT