



VINEYARD WIND

Presentation to:

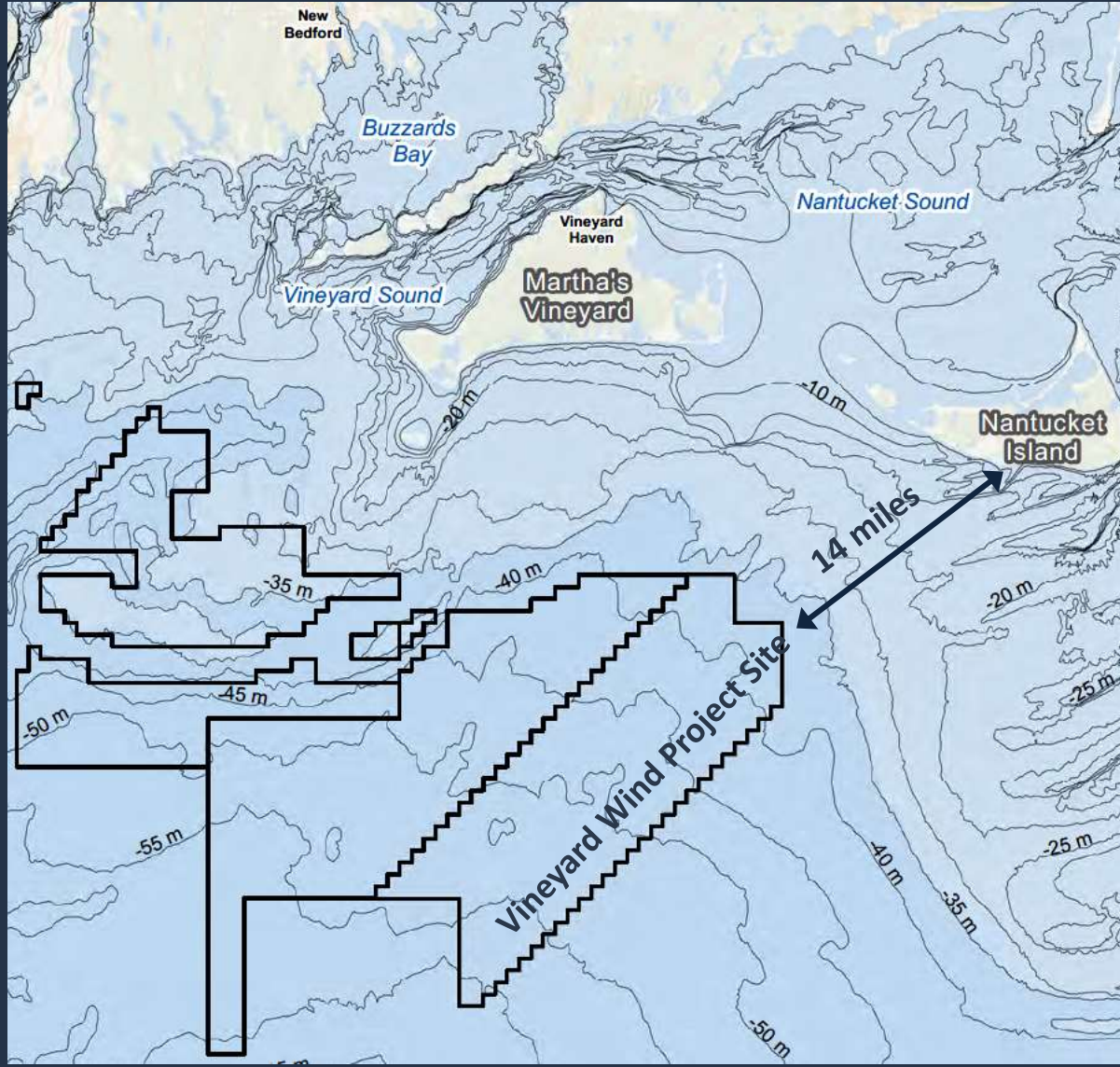
Massachusetts & Rhode Island
Task Force

May 16, 2017

AGENDA

- Introduction
- Overview of Vineyard Wind
- Project status
- Stakeholder Outreach
- Project Mitigation

LEASE AREA OCS-A-501



- Acquired in 2015 through US Department of Interior competitive lease auction
- As good as any offshore site in the world:
 - High wind speeds
 - Solid seafloor conditions
 - Multiple grid connection options
- Project sizing/buildout will be influenced by Massachusetts procurement process

COPENHAGEN INFRASTRUCTURE PARTNERS(CIP)



- Well funded, highly experienced investor backing
- A fund managed by CIP acquired 100% of Vineyard Wind in August, 2016
- CIP has long-term investments focus
 - Invests on behalf of 21 institutional investors
 - Some of largest Scandinavian pension funds
 - Early engagement in projects
 - Clean energy project focus
- Today manages over € 5 billion

EXPERIENCED OFFSHORE WIND DEVELOPMENT TEAMS



Veja Mate, 402 MW, Germany

Beatrice, 588 MW, UK (Scotland)

Vineyard Wind, 400-800+ MW, USA

Beothuk, 180 MW, Canada

Early stage: Asia

- A specialized CIP team manages design and construction of offshore projects globally for CIP
- Individuals on team have had key roles on :
 - More than 15 offshore wind projects in Europe
 - 10 of the 15 largest projects to date
 - Strong technical expertise: engaged in offshore wind as early as world's 2nd offshore wind farm, built in 1995
 - Experience in all aspects of offshore wind:

Development - Construction - Operations

- Best practices and innovations readily applied across CIP's offshore wind portfolio
- CIP's European expertise coupled with U.S. team highly experienced in siting and permitting U.S. offshore wind

VINEYARD POWER

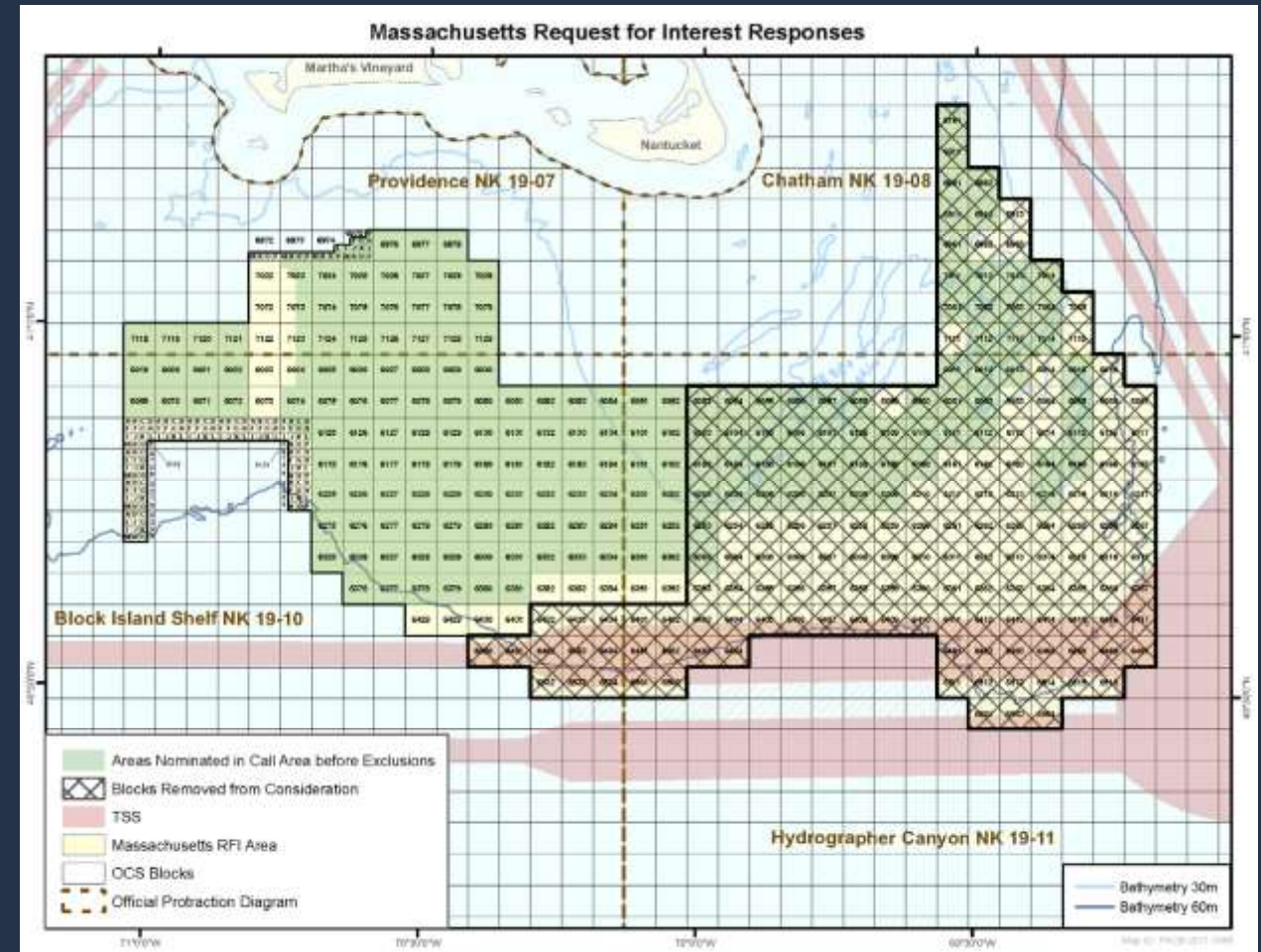


- First and only developer in the US to execute a Community Benefit Agreement with a local, non-profit partner
- Provides meaningful local participation in project
 - 1400 members: 10% of island's utility meters
 - Seasonal, year-round, and small business members
- Closely involved in day-to-day development activities
- Provides guidance regarding important local issues
- Identifies opportunities to benefit local community

HISTORY

- Evolution of our site selection
 - Task force
 - Working groups
- Vineyard Power Partnership
- Request for Interest (RFI), Call for Information (CFI)
- Environmental Assessment (EA) on Massachusetts WEA
- Lease issuance April 1, 2015
- Site Assessment Plan
 - For met/ocean data collection
 - Due April 1, 2016
 - Extended to April 1, 2017
 - 'Departure' can be requested
- Construction and Operations Plan (COP)
 - 'Due' April 1, 2020

MASSACHUSETTS RFI AREA - 2010



PROJECT STATUS

- Geological Surveys conducted in Fall 2017
- SAP Submitted
- Export cable routing on-going
- Planning for export cable survey (for state waters, as well) during Summer 2017



NEXT STEPS

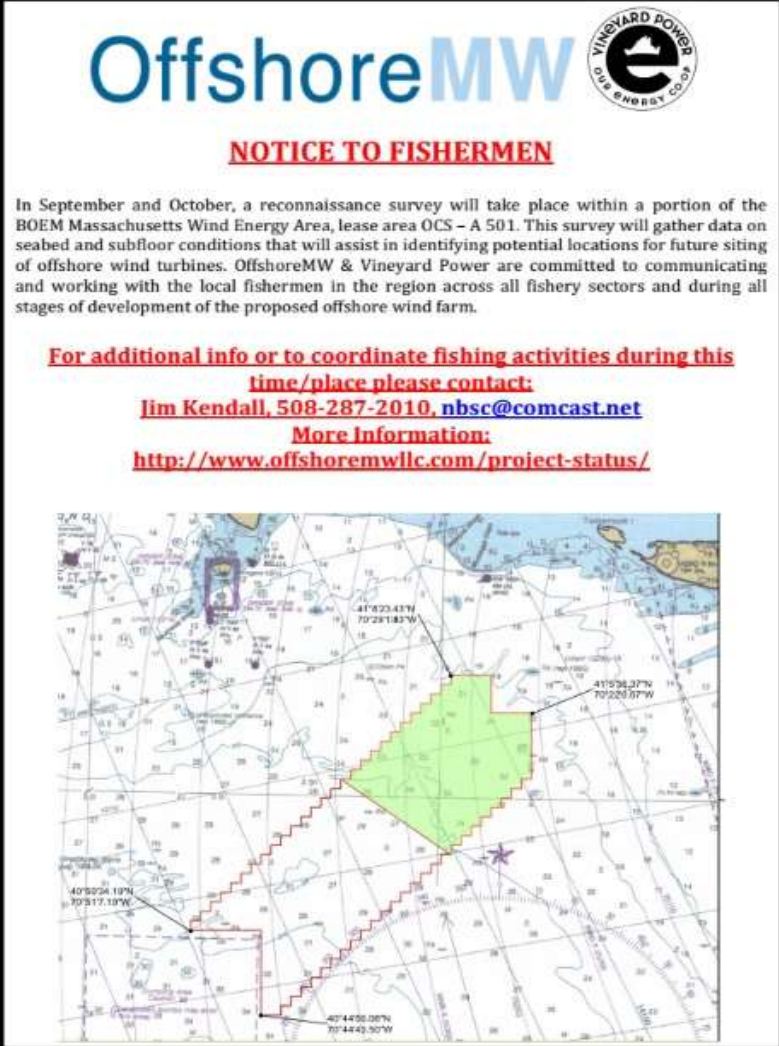
- Export Cable Routing & Survey Work
- Massachusetts RFP
- Define Project Envelope
- Federal Permitting
- State Permitting




STAKEHOLDER OUTREACH

- Fisheries
 - Fisheries Representative
 - Flyers and advertisements (including LORAN lines)
 - Thumb drives for chart plotters
 - Scheduled and ad hoc meetings
 - Real time response during surveys
 - Consultation on export cable

fisherynation.com – continuously updated




The flyer features the 'OffshoreMW' logo in blue and the 'Vineyard Power Our Energy Co.' logo in a circular emblem. The title 'NOTICE TO FISHERMEN' is in red. The text describes a reconnaissance survey in the BOEM Massachusetts Wind Energy Area, lease area OCS - A 501, scheduled for September and October. It states that the survey will gather seabed and subfloor data to identify potential turbine locations. The company is committed to communicating with local fishermen. Contact information for Jim Kendall is provided, along with a website link for project status. A nautical chart at the bottom shows a green shaded area representing the survey site, with several coordinate points marked.

OffshoreMW 

NOTICE TO FISHERMEN

In September and October, a reconnaissance survey will take place within a portion of the BOEM Massachusetts Wind Energy Area, lease area OCS - A 501. This survey will gather data on seabed and subfloor conditions that will assist in identifying potential locations for future siting of offshore wind turbines. OffshoreMW & Vineyard Power are committed to communicating and working with the local fishermen in the region across all fishery sectors and during all stages of development of the proposed offshore wind farm.

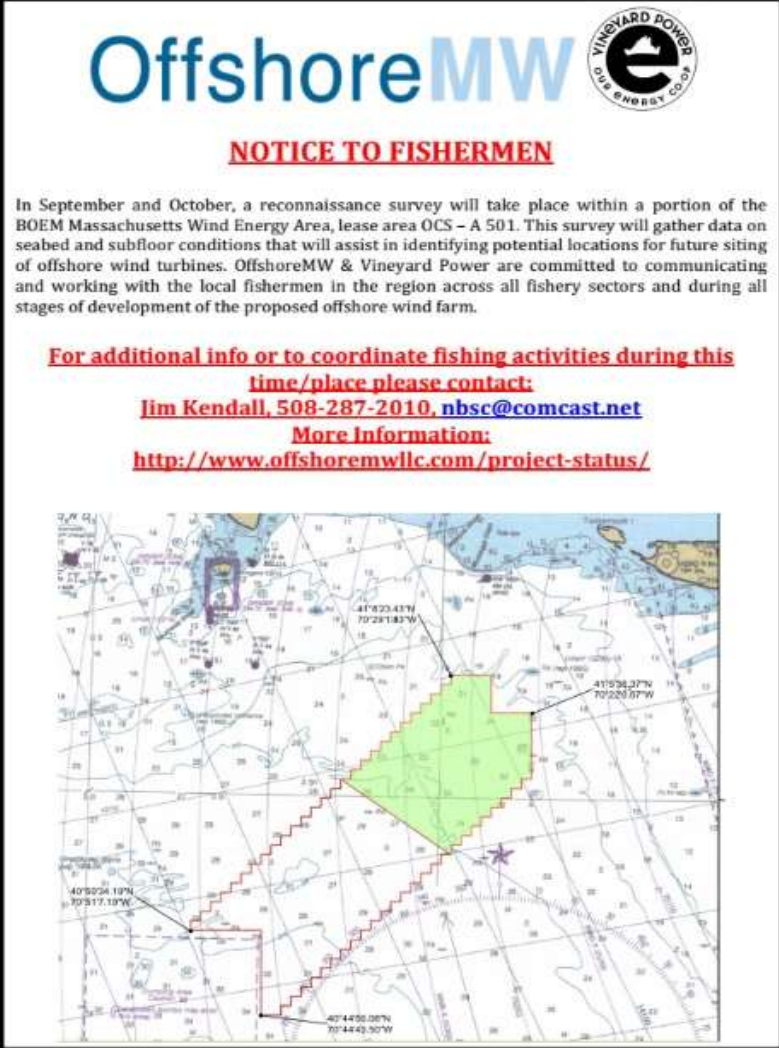
For additional info or to coordinate fishing activities during this time/place please contact:
Jim Kendall, 508-287-2010, nbsc@comcast.net
More Information:
<http://www.offshoremwllc.com/project-status/>




STAKEHOLDER OUTREACH

- NGOs
 - Ongoing updates and project coordination
 - Compliance with NGO proposed approach to surveys
 - Coordinated industry meetings with American Wind Energy Association (AWEA)
- Tribal consultation underway
- Municipal outreach underway

fisherynation.com – continuously updated



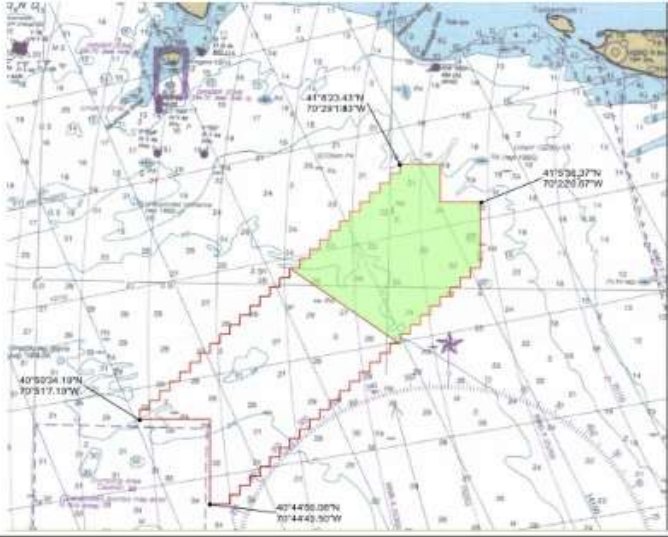
The poster features the 'OffshoreMW' logo in blue and black, with the 'Vineyard Power Our Energy Co.' logo to its right. Below the logo is the heading 'NOTICE TO FISHERMEN' in red. The main text, in black, describes a reconnaissance survey in the BOEM Massachusetts Wind Energy Area, lease area OCS - A 501, scheduled for September and October. It states that the survey will gather seabed and subfloor data to identify potential turbine sites. OffshoreMW and Vineyard Power are committed to communicating with local fishermen. Contact information for Jim Kendall is provided, along with a link to the project status page. At the bottom, a nautical chart shows a green-shaded area representing the survey site, with several coordinate points marked.

OffshoreMW 

NOTICE TO FISHERMEN

In September and October, a reconnaissance survey will take place within a portion of the BOEM Massachusetts Wind Energy Area, lease area OCS - A 501. This survey will gather data on seabed and subfloor conditions that will assist in identifying potential locations for future siting of offshore wind turbines. OffshoreMW & Vineyard Power are committed to communicating and working with the local fishermen in the region across all fishery sectors and during all stages of development of the proposed offshore wind farm.

For additional info or to coordinate fishing activities during this time/place please contact:
Jim Kendall, 508-287-2010, nbsc@comcast.net
More Information:
<http://www.offshoremwllc.com/project-status/>



PROJECT MITIGATION

Marine Mammals & Sea Turtles

- Protected species observers
 - Exclusion zones / equipment shut-downs
 - 500m for North Atlantic Right Whale
 - 200m+ for all species
 - Passive acoustic monitoring
 - Night vision binoculars
 - Vessel speed restrictions
-
- Historic Concerns
 - Oversight from a Qualified Marine Archaeologist
 - Review of geophysical data prior to bottom disturbing activity
 - Ongoing and planned consultations

Contact Information:

Vineyard Wind
info@vineyardwind.com
www.vineyardwind.com

Vineyard Power Cooperative
Erik Peckar
Erik@vineyardpower.com
www.vineyardpower.com

Jim Kendall
Fisheries Representative
508-287-2010
nbsc@comcast.net