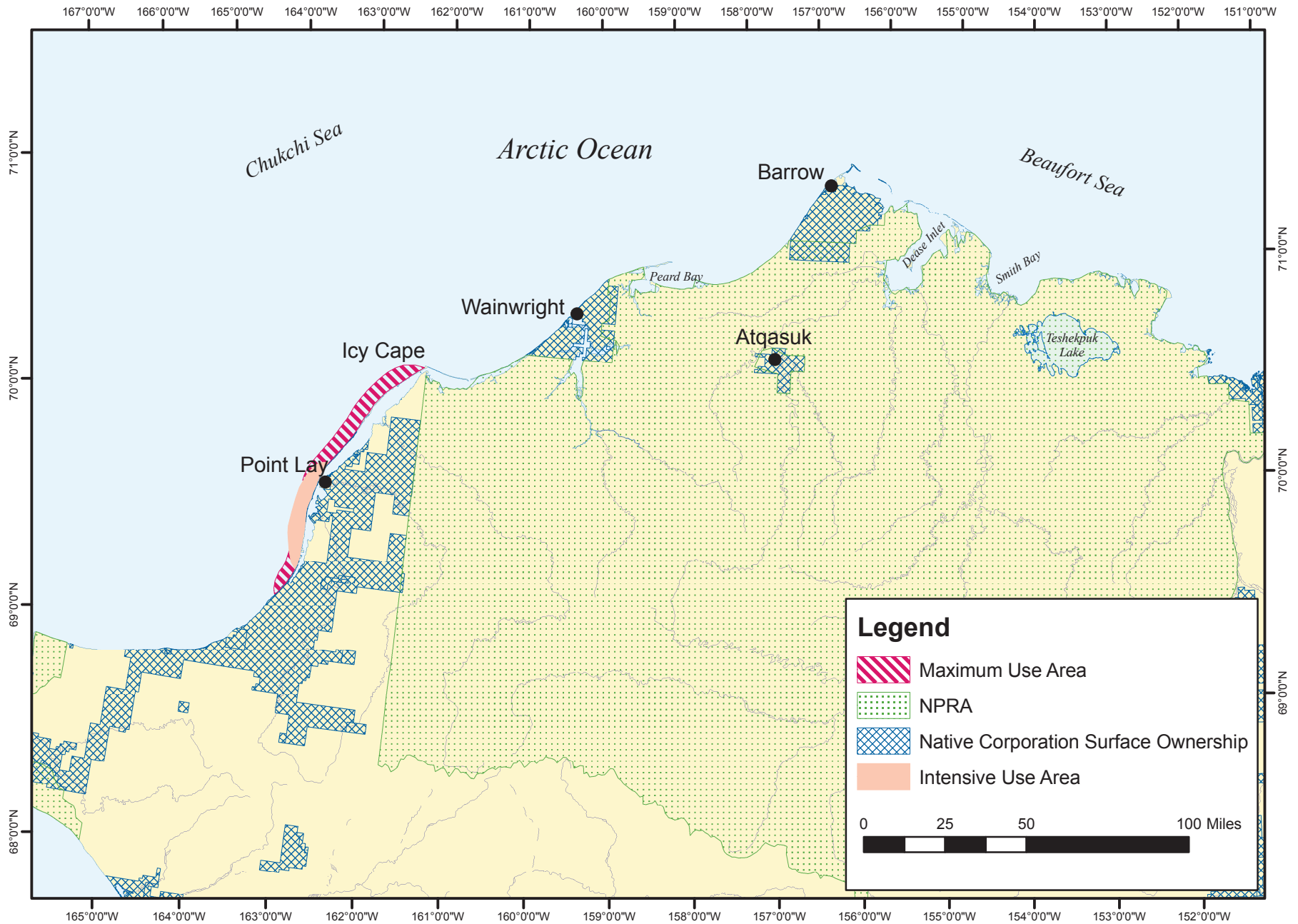


Source: North Slope Borough, 1999.

Figure 3.4.2-76 Wainwright Expenditures on Subsistence Activities, 1998-1999



Source: Braund and Burnham, 1984

Figure 3.4.2-77 Point Lay Subsistence-Use Areas for Beluga Whales

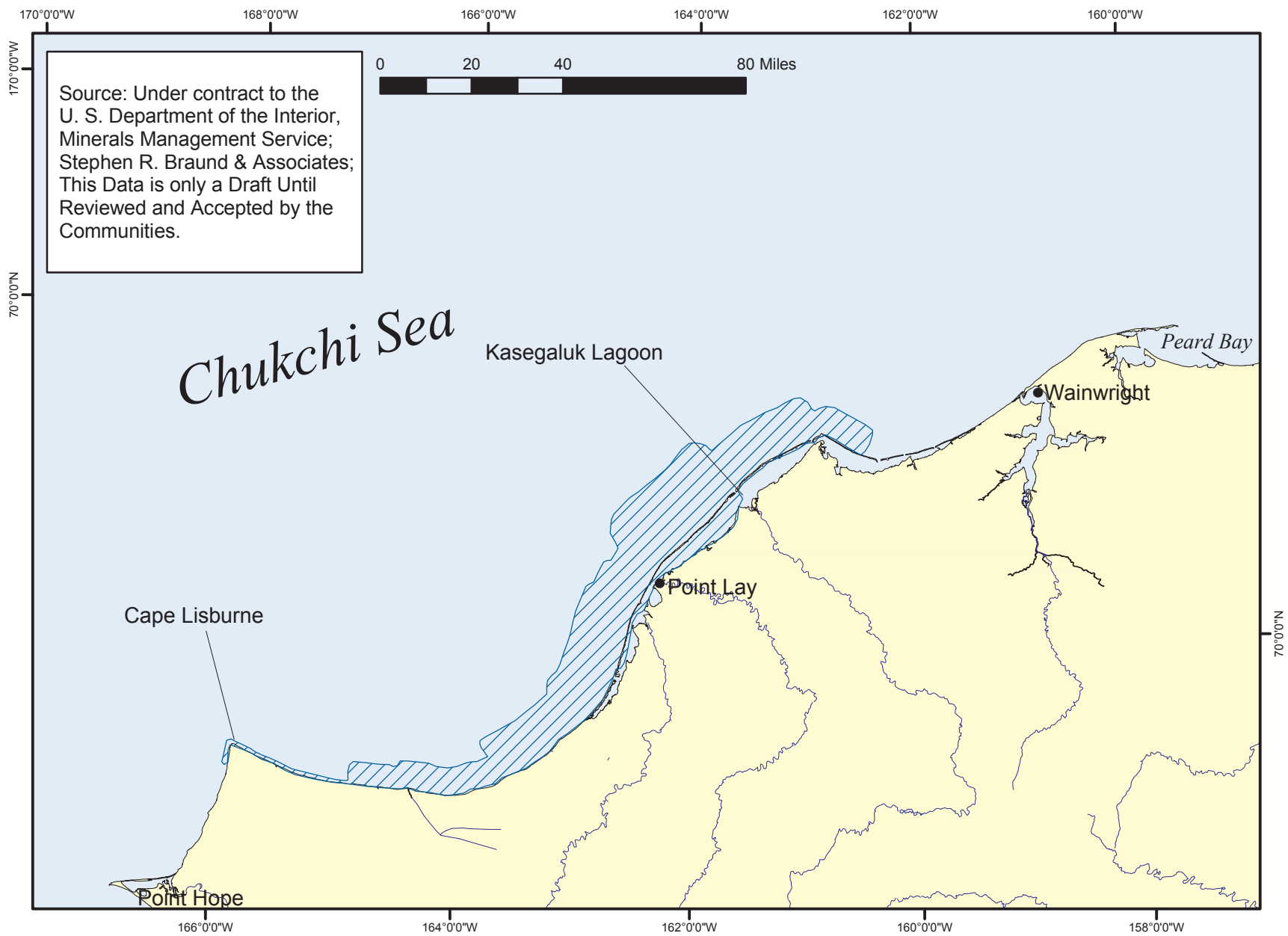
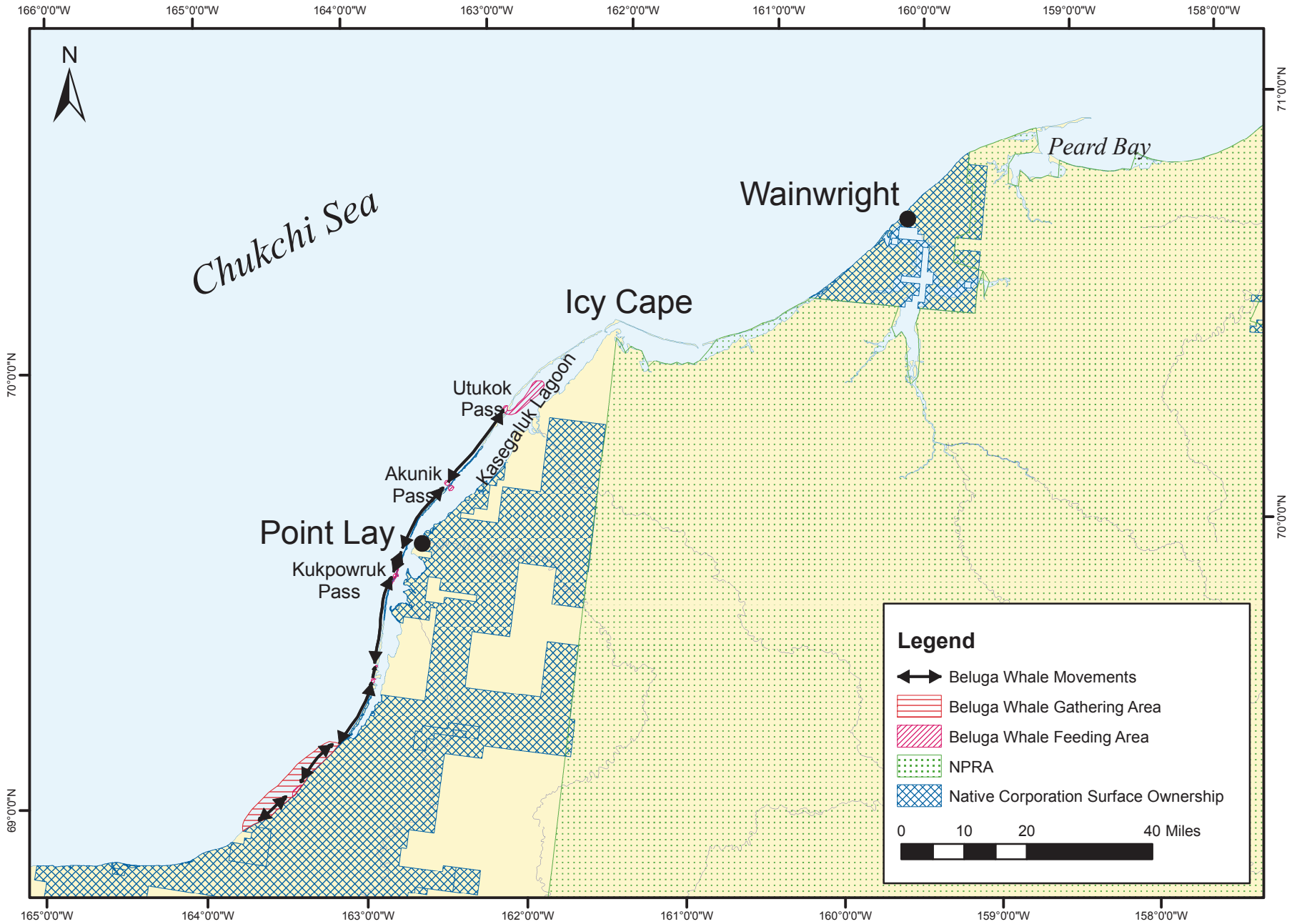


Figure 3.4.2-78 Point Lay Subsistence-Use Areas, Beluga Whale, 1997-2006



Source: Huntington and Myrmin, 1996

Figure 3.4.2-79 Beluga Whale Feeding and Calving Areas and Coastal Movements Based on Point Lay Traditional Knowledge

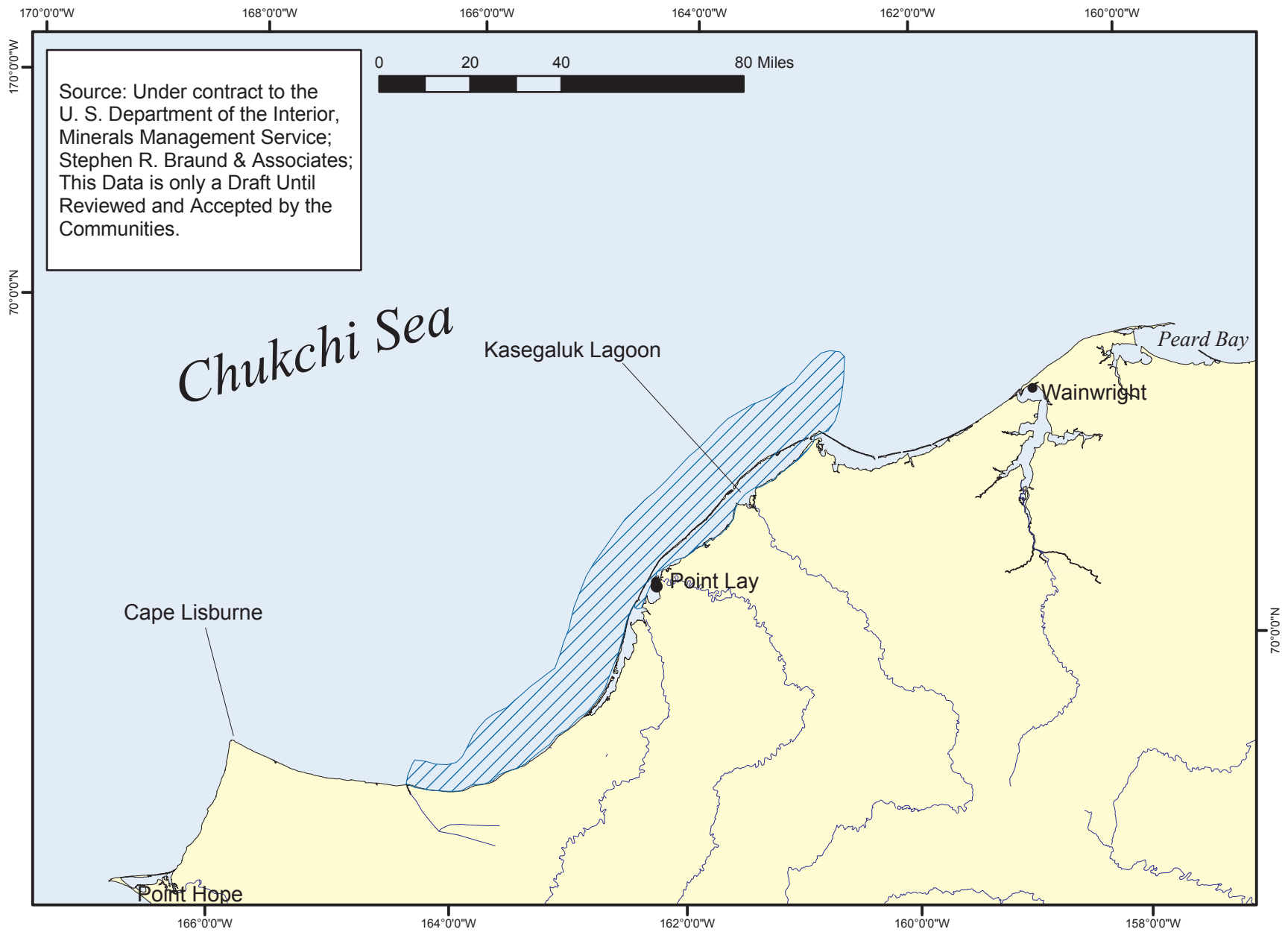


Figure 3.4.2-80 Point Lay Subsistence-Use Areas, Ringed Seal, 1997-2006

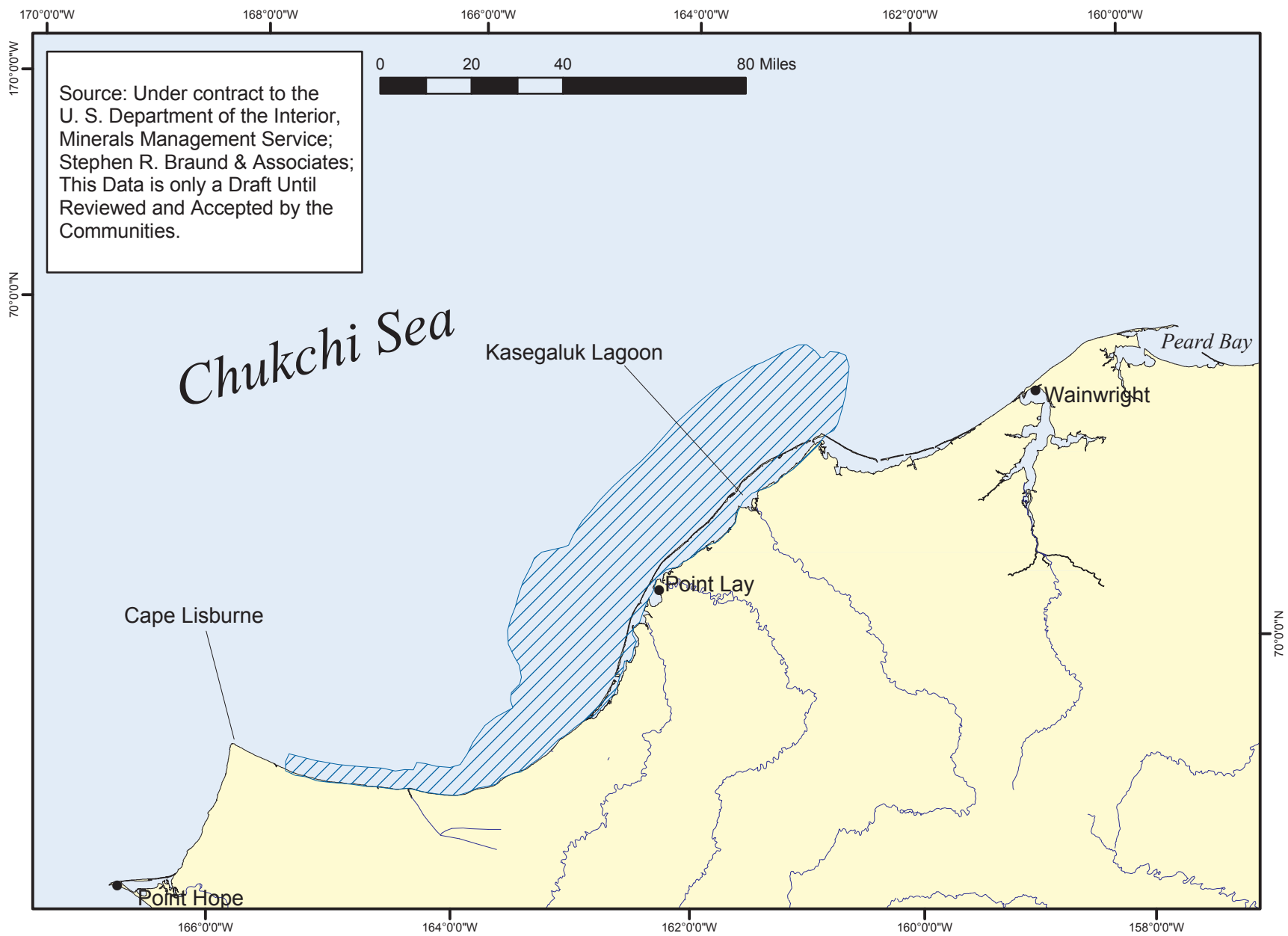


Figure 3.4.2-81 Point Lay Subsistence-Use Areas, Bearded Seal, 1997-2006

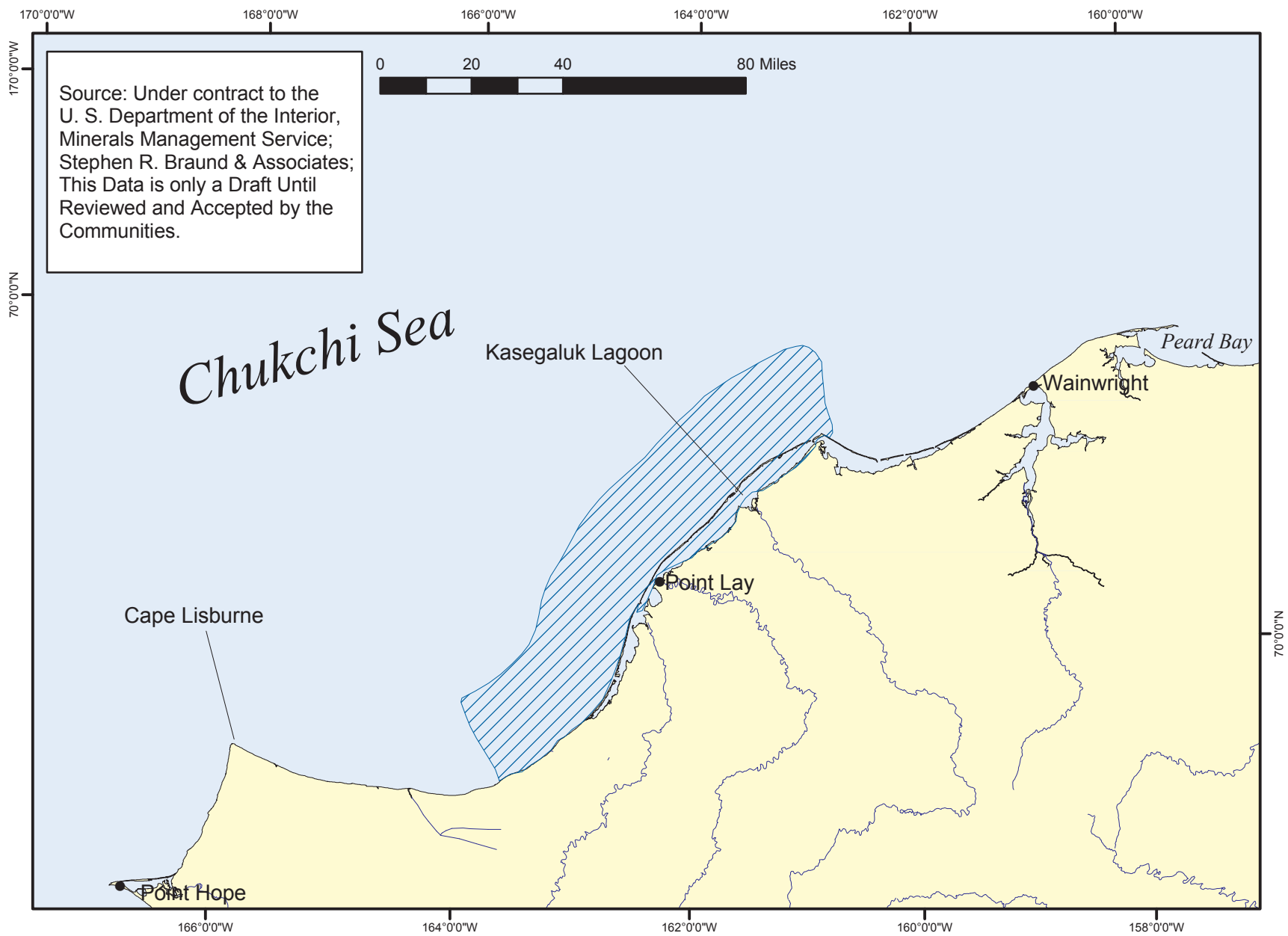


Figure 3.4.2-82 Point Lay Subsistence-Use Areas, Walrus, 1997-2006

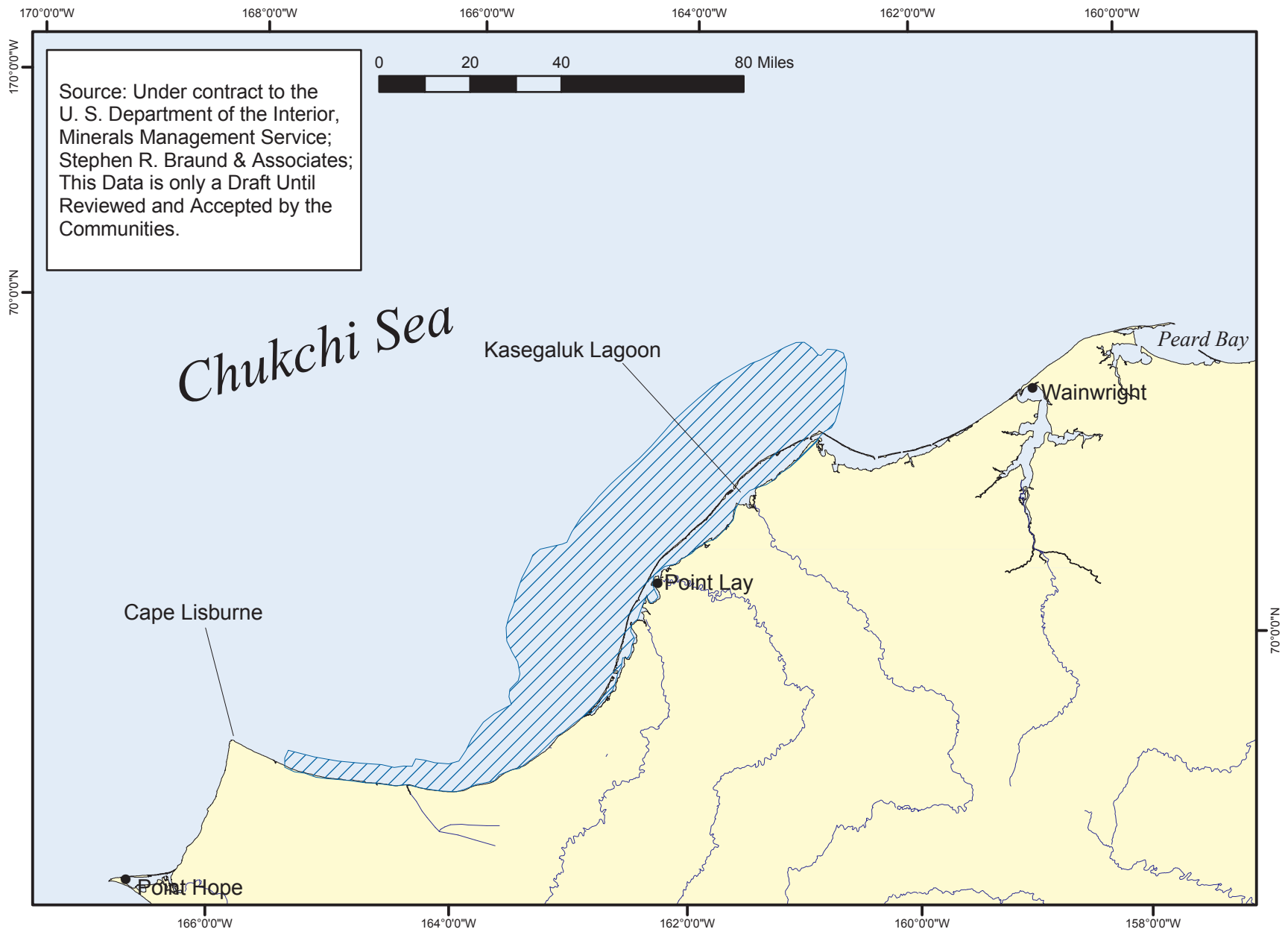
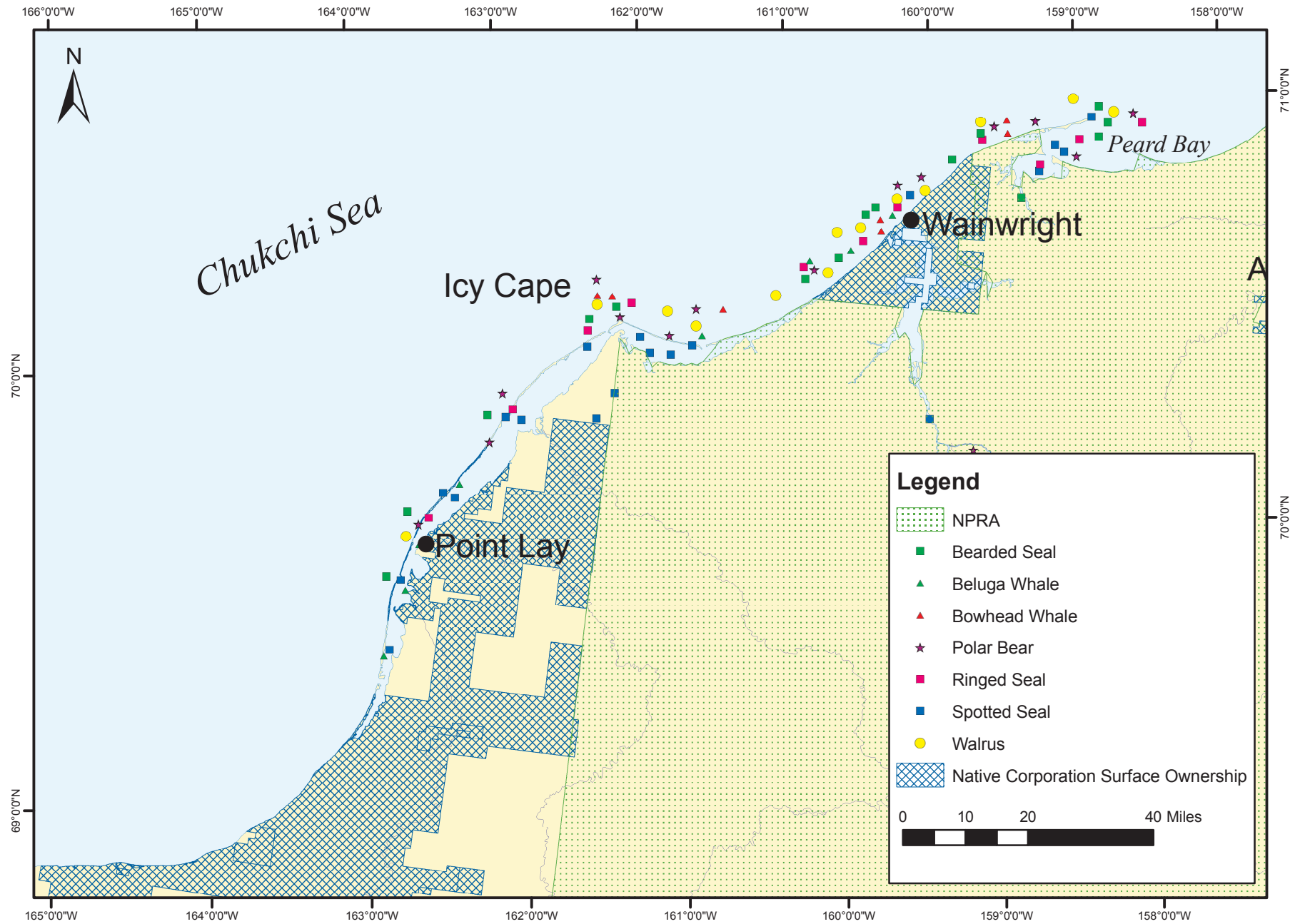


Figure 3.4.2-83 Point Lay Subsistence-Use Areas, Spotted Seal, 1997-2006



Source: Huntington and Myrmin, 1996; Kassam and Wainwright Traditional Council, 2001

Figure 3.4.2-84 Marine Mammal and Polar Bear Subsistence Harvest Locations Near Point Lay and Wainwright

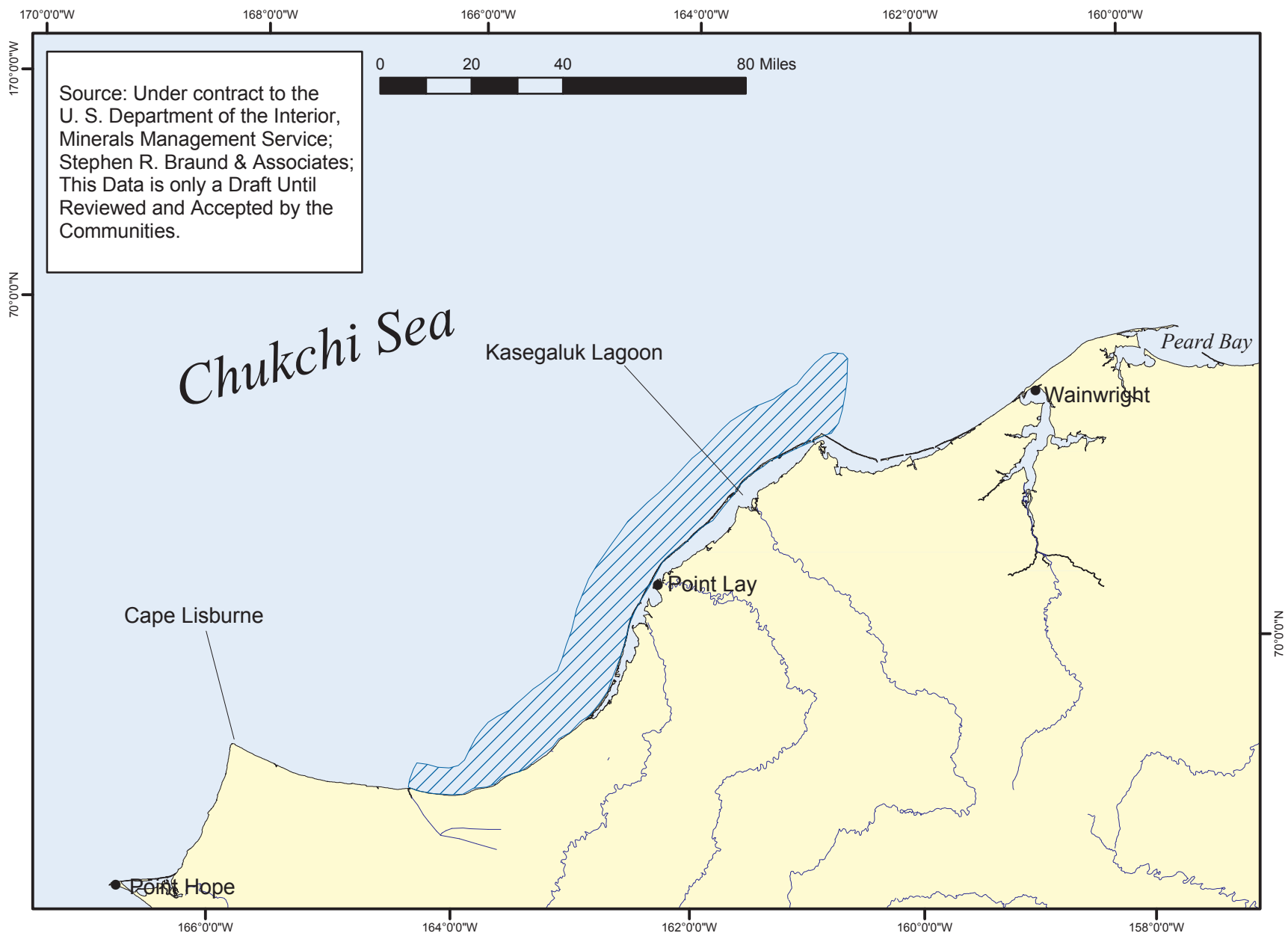
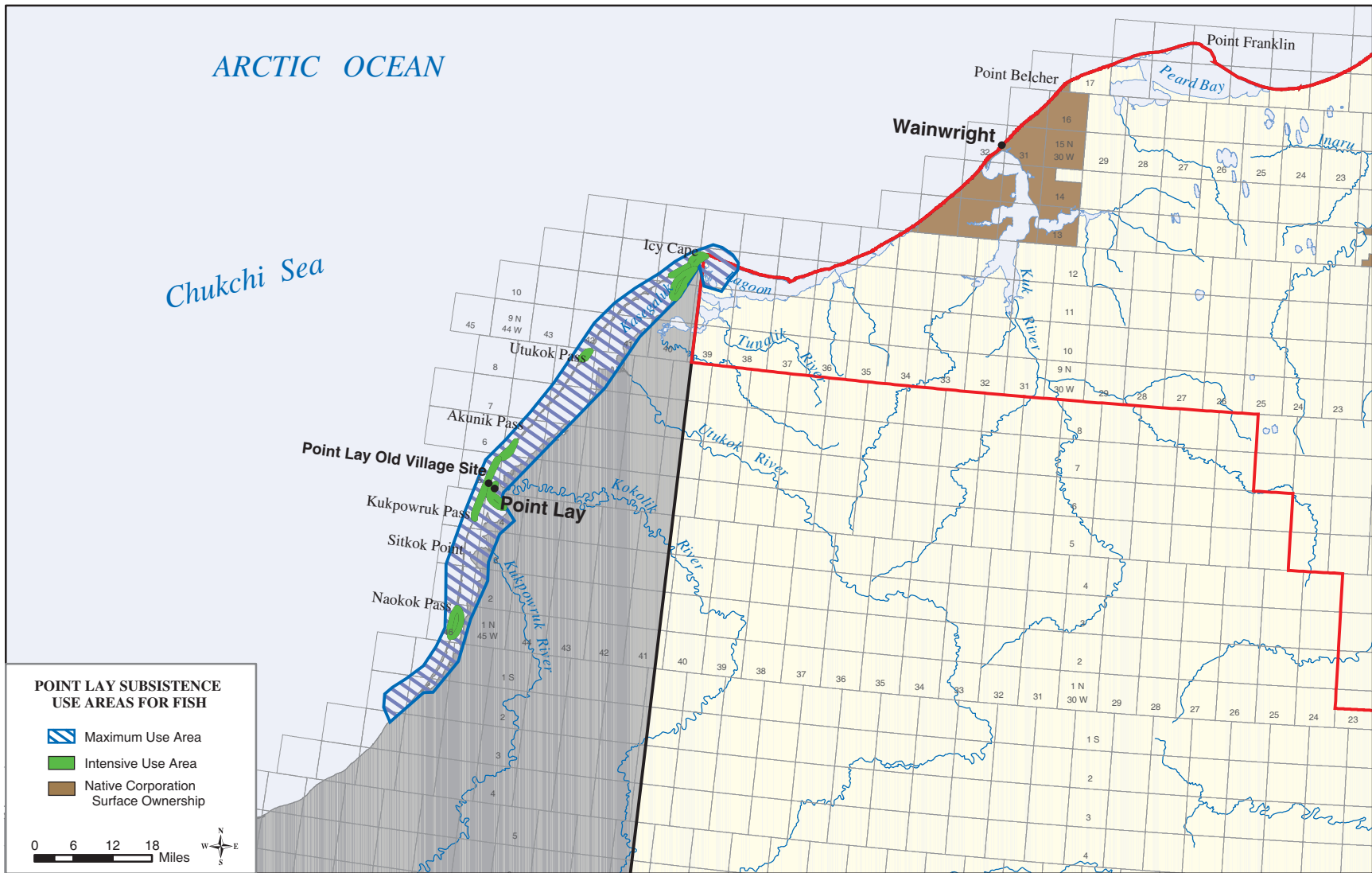
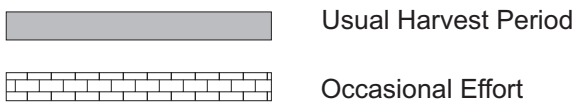
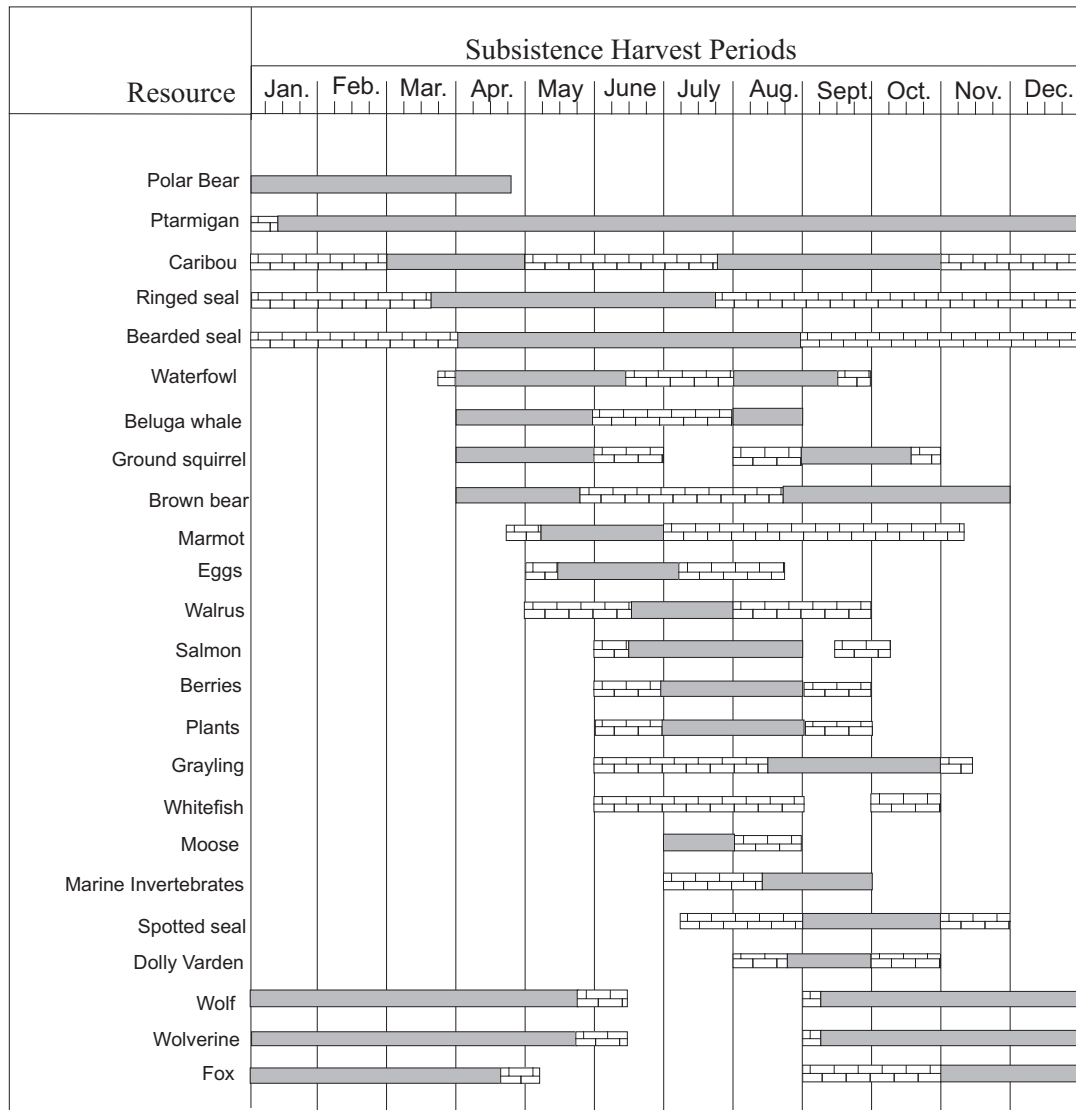


Figure 3.4.2-85 Point Lay Subsistence-Use Areas, Polar Bear, 1997-2006



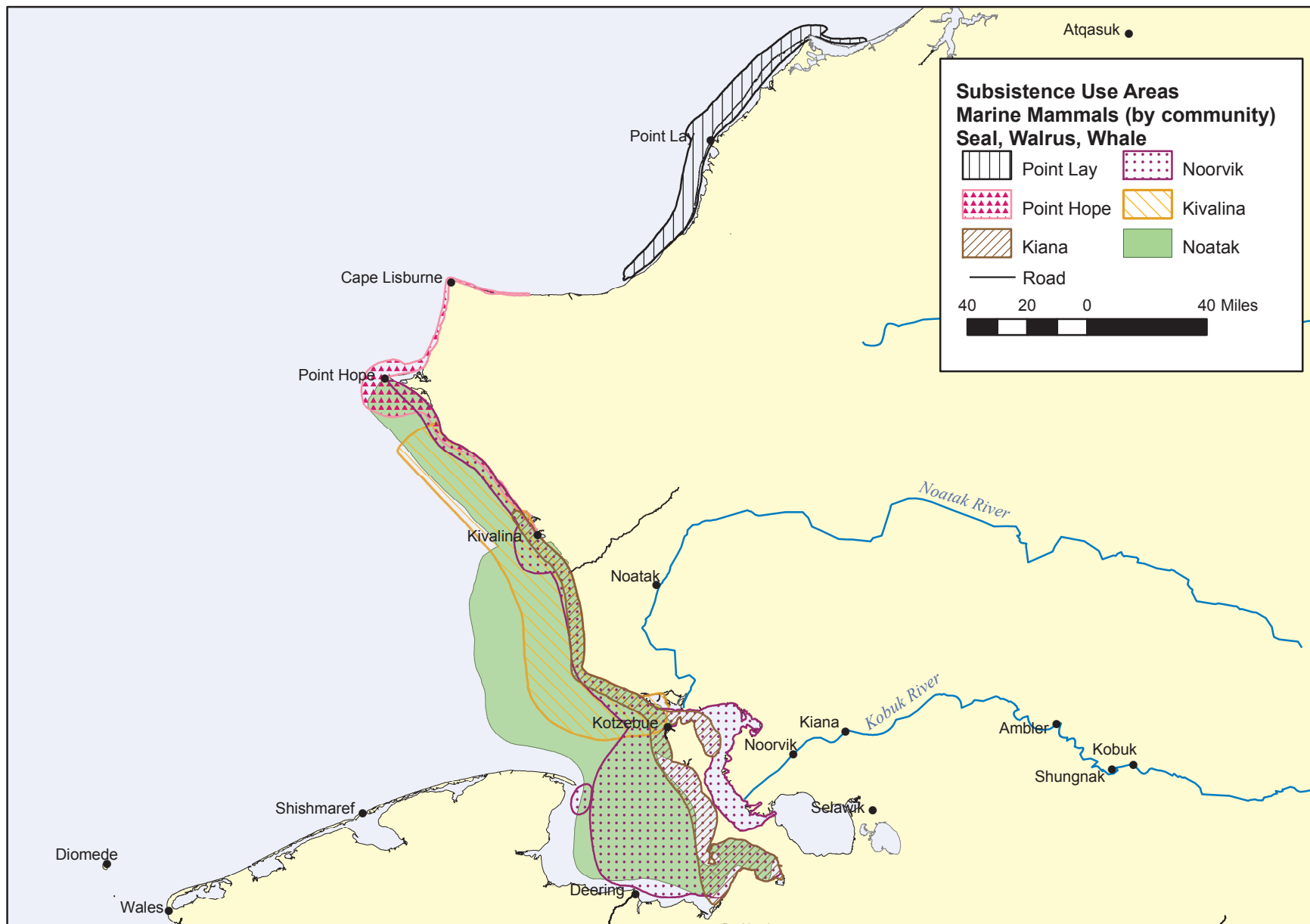
Source: Braund and Burnham, 1984

Figure 3.4.2-86 Point Lay Subsistence Fishing Areas



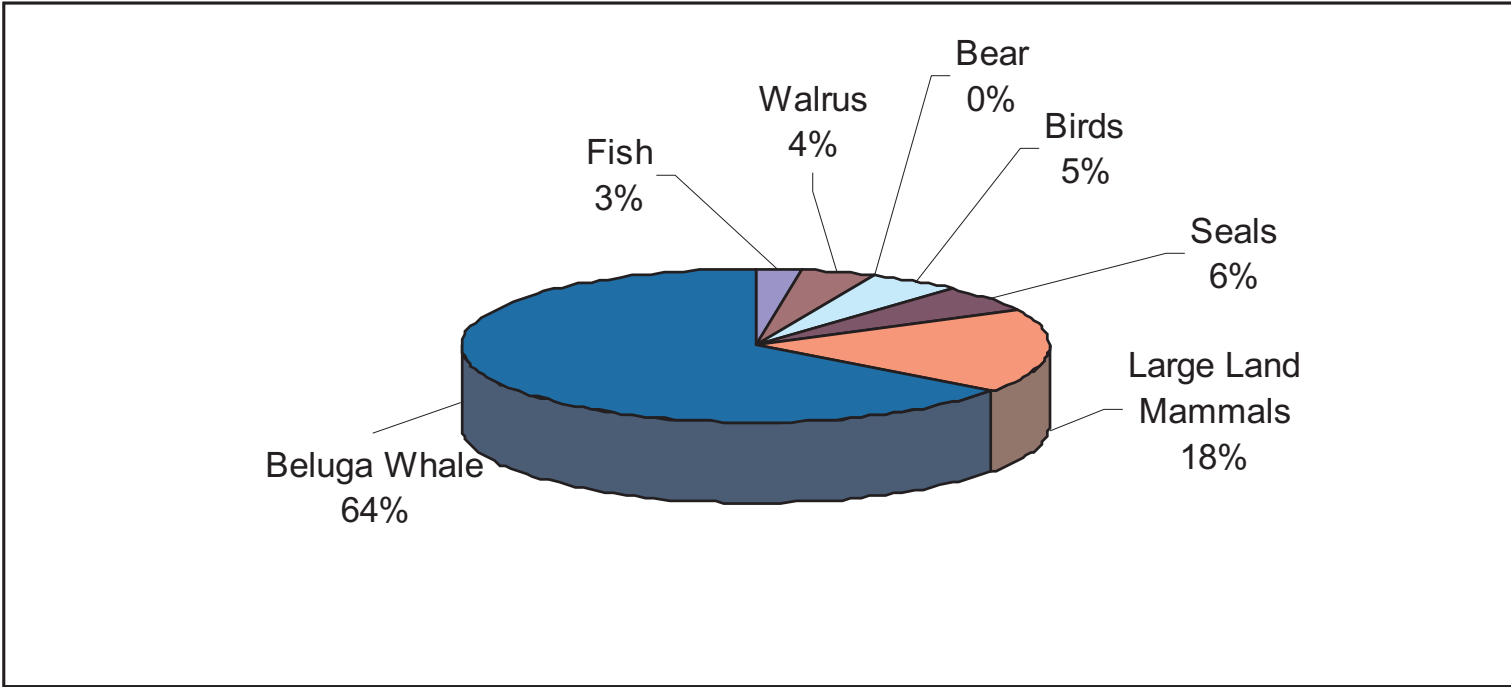
Source: Pedersen (1979) and North Slope Borough Contract Staff (1979)

Figure 3.4.2-87 Point Lay Annual Subsistence Cycle



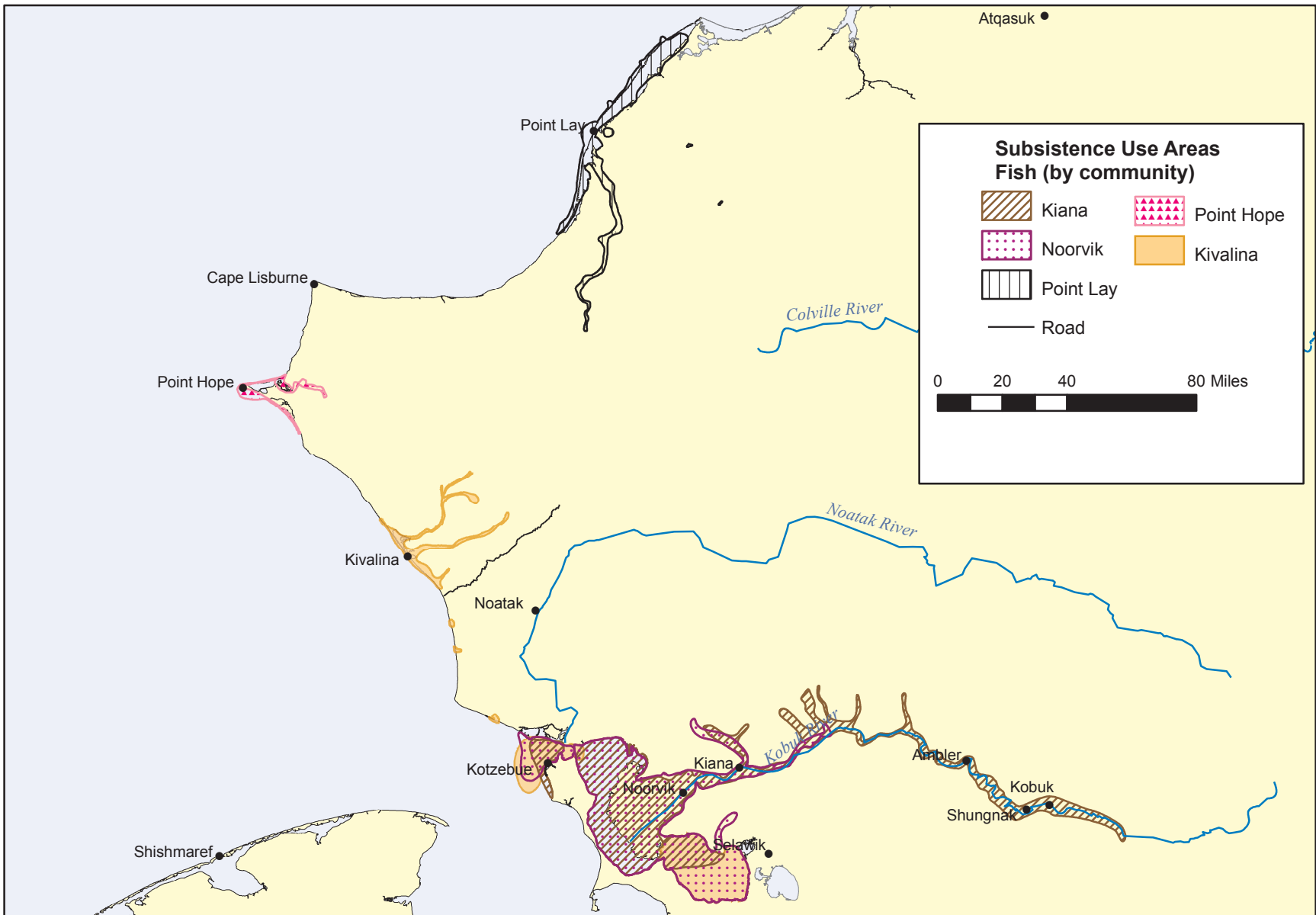
Source: State of Alaska - ADF&G, 1987; Kobuk-Seward Peninsula Proposed RMP/Final EIS, Bureau of Land Management - Alaska

Figure 3.4.2-88 Subsistence-Use Areas, Marine Mammals (Point Lay, Point Hope, Kiana, Noorvik, Kivalina, and Noatak)



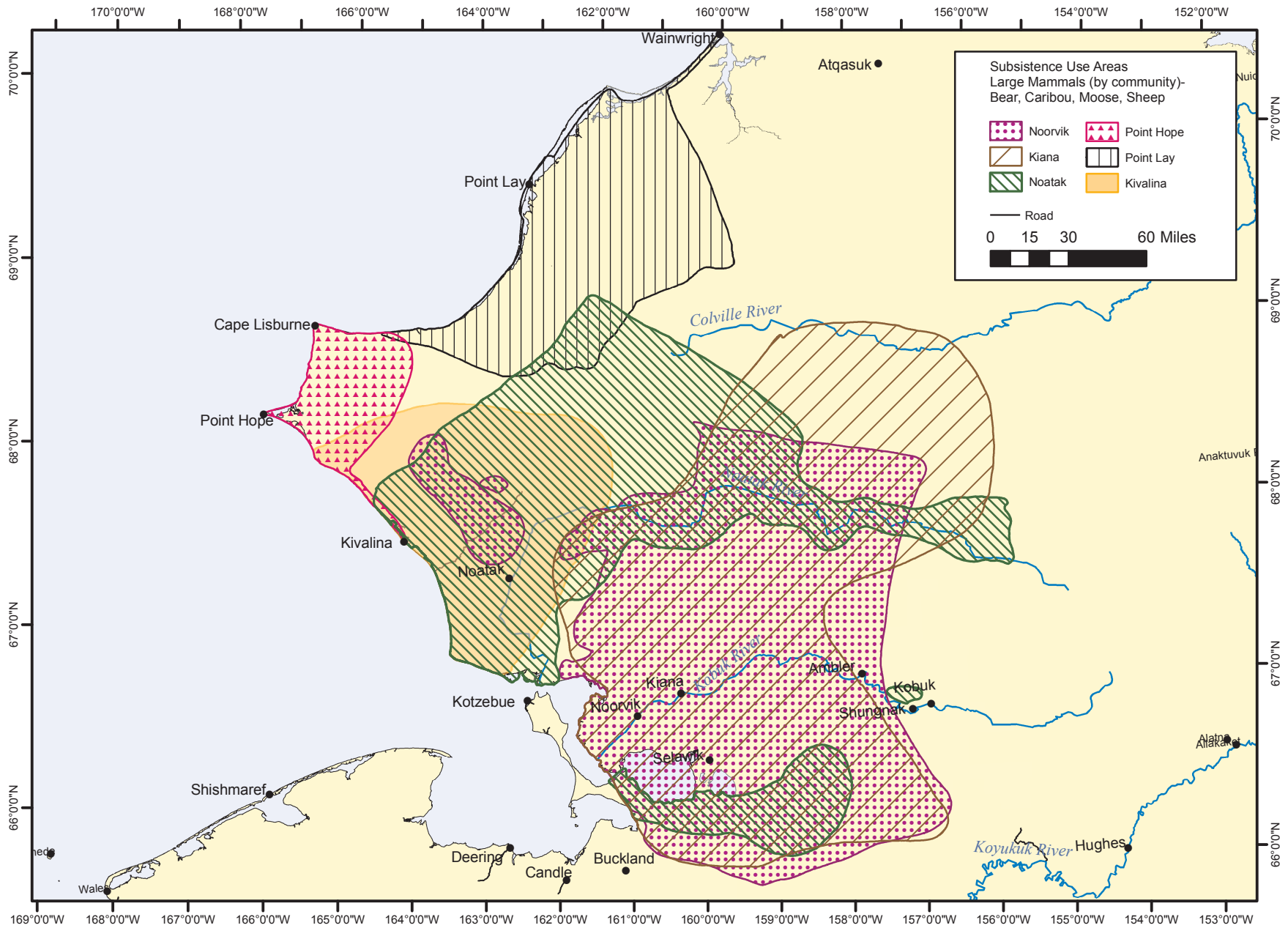
Source: Impact Assessment, Inc. (1989c)

Figure 3.4.2-89 Relative Contribution of Beluga Whale to the Point Lay Subsistence Harvest



Source: State of Alaska - ADF&G, 1987; Kobuk-Seward Peninsula Proposed RMP/Final EIS, Bureau of Land Management - Alaska

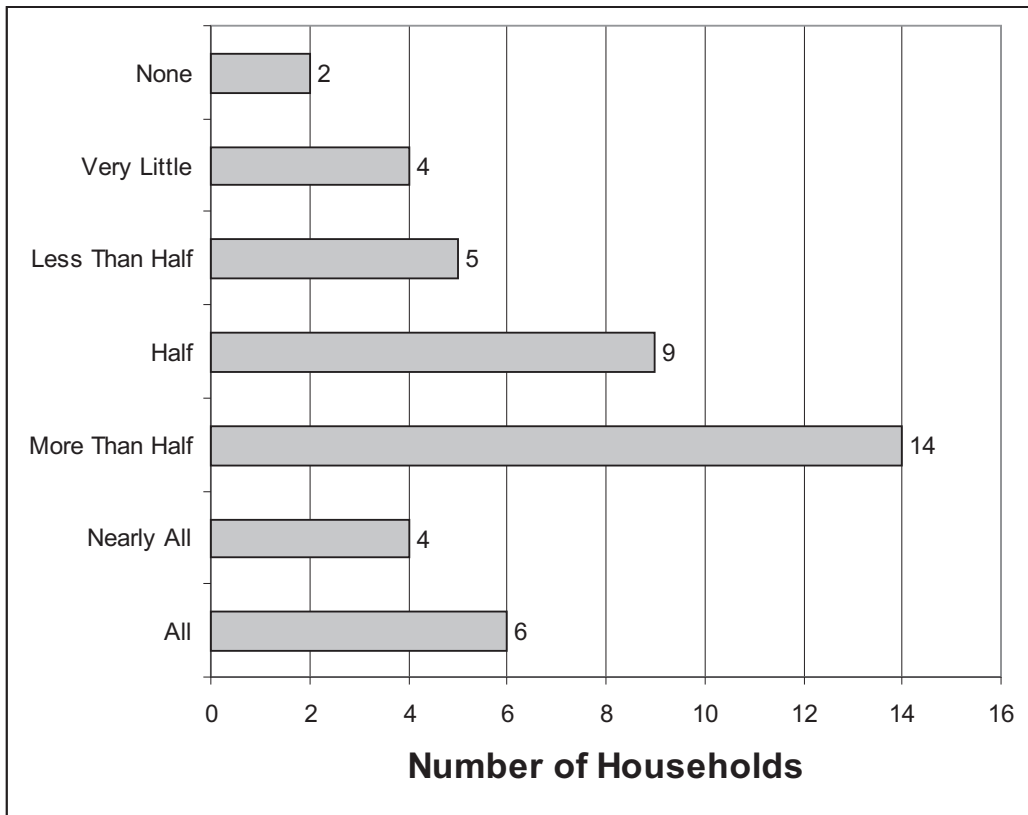
Figure 3.4.2-90 Subsistence-Use Areas, Fish (Point Lay, Point Hope, Kivalina, Noorvik, Kiana)



Source: State of Alaska- ADF&G, 1987; Bureau of Land Management - Alaska Kobuk-Seward Peninsula Proposed RMP/Final EIS

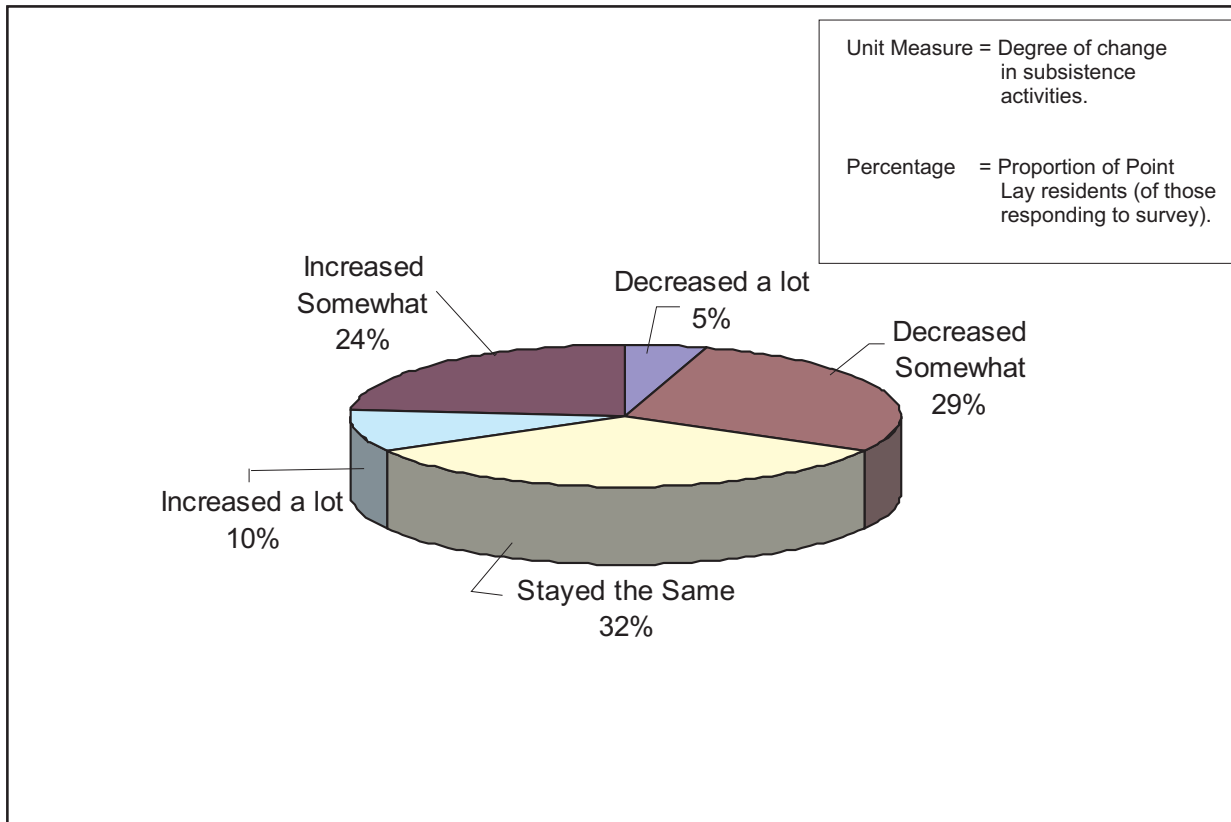
Figure 3.4.2-91 Subsistence-Use Area, Mammals (Point Lay, Point Hope, Kivalina, Noatak, Noorvik, Kiana)

Subsistence Resources
in Relation to all food
Consumed in Households



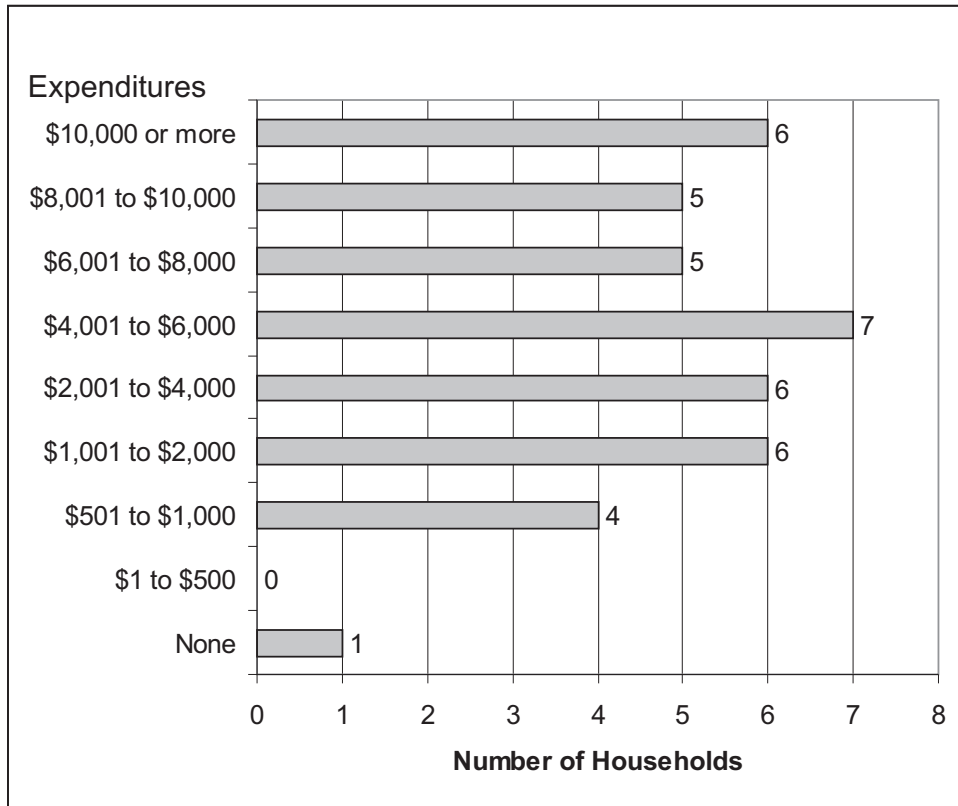
Source: North Slope Borough, 1999

Figure 3.4.2-92 Point Lay Household Consumption of Subsistence Resources, 1998-1999



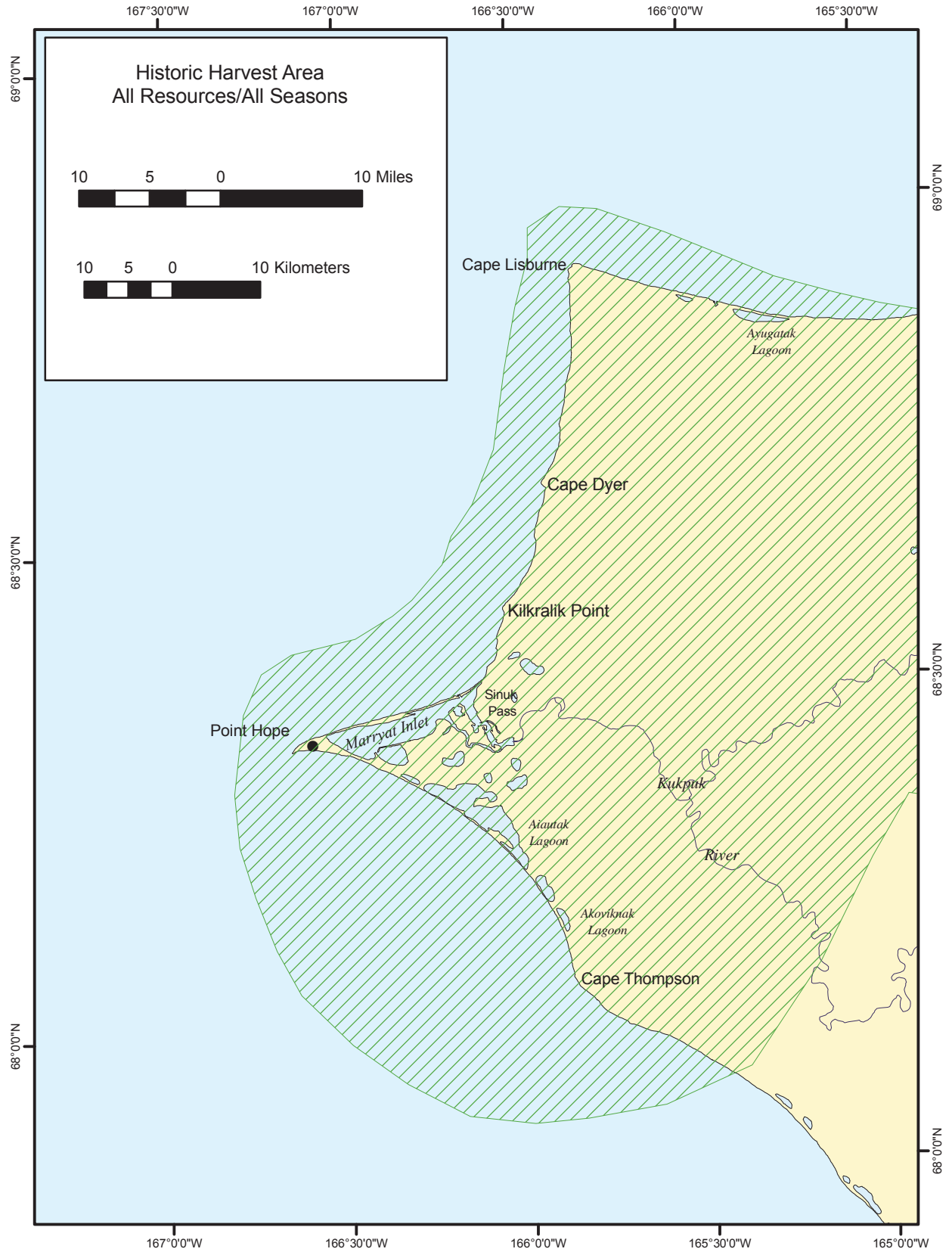
Source: North Slope Borough, 1999

Figure 3.4.2-93 Point Lay Changes in Subsistence Activity, 1998-1999



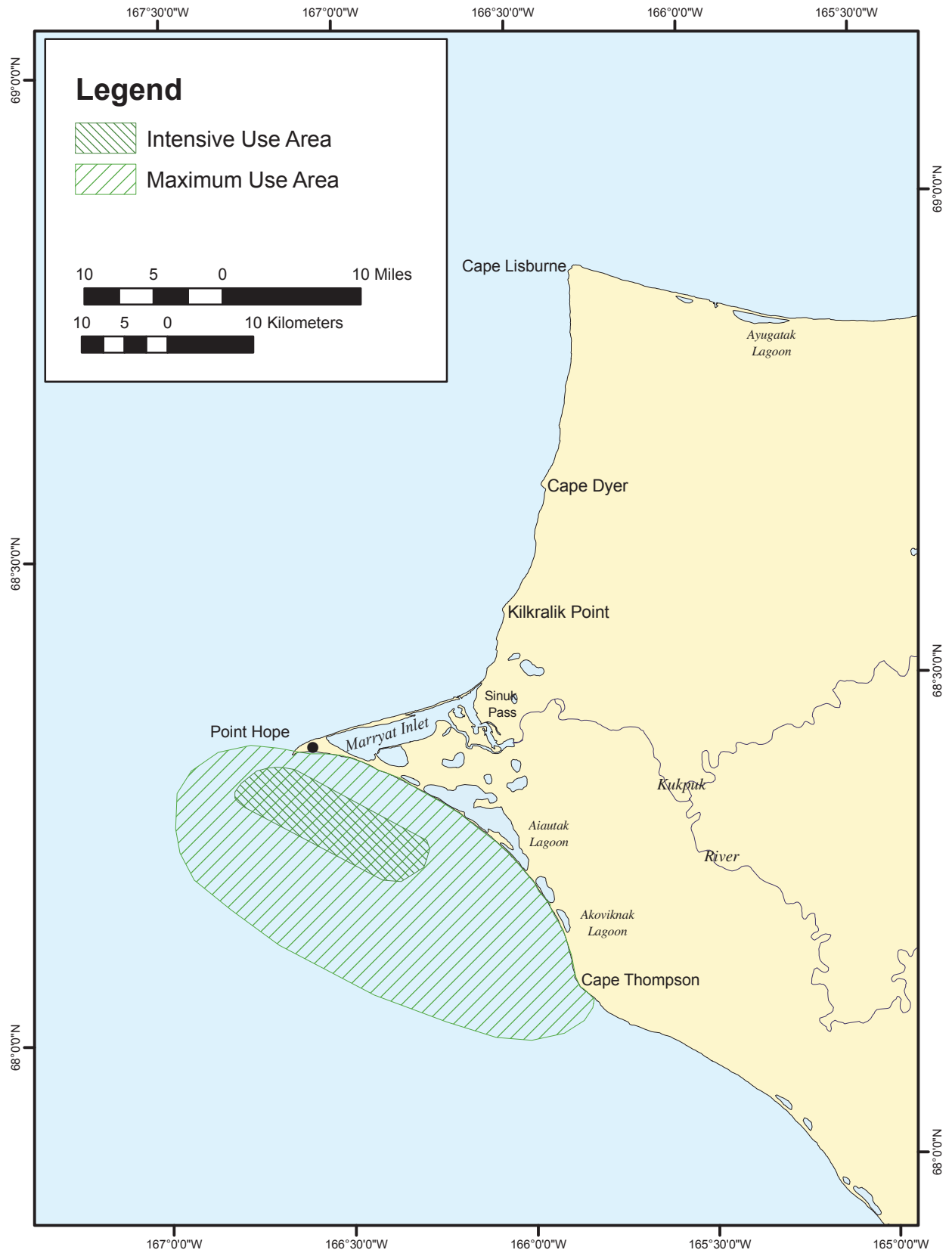
Source: North Slope Borough, 1999.

Figure 3.4.2-94 Point Lay Expenditures on Subsistence Activities, 1998-1999



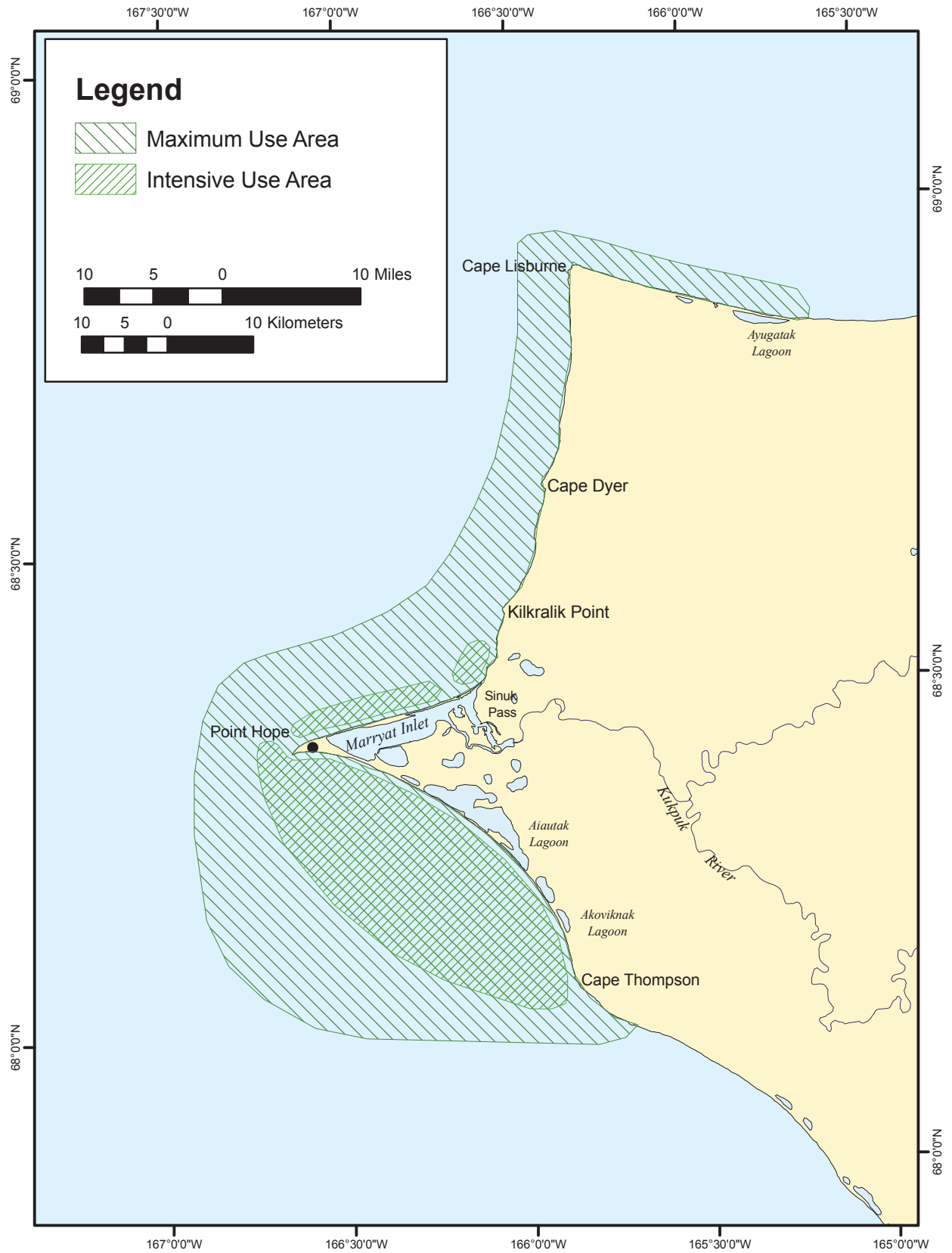
Sources: From Braund & Burnham (1984); Pedersen (1977)

Figure 3.4.2-95 Point Hope Historic Subsistence Harvest Areas, All Resources, All Seasons.



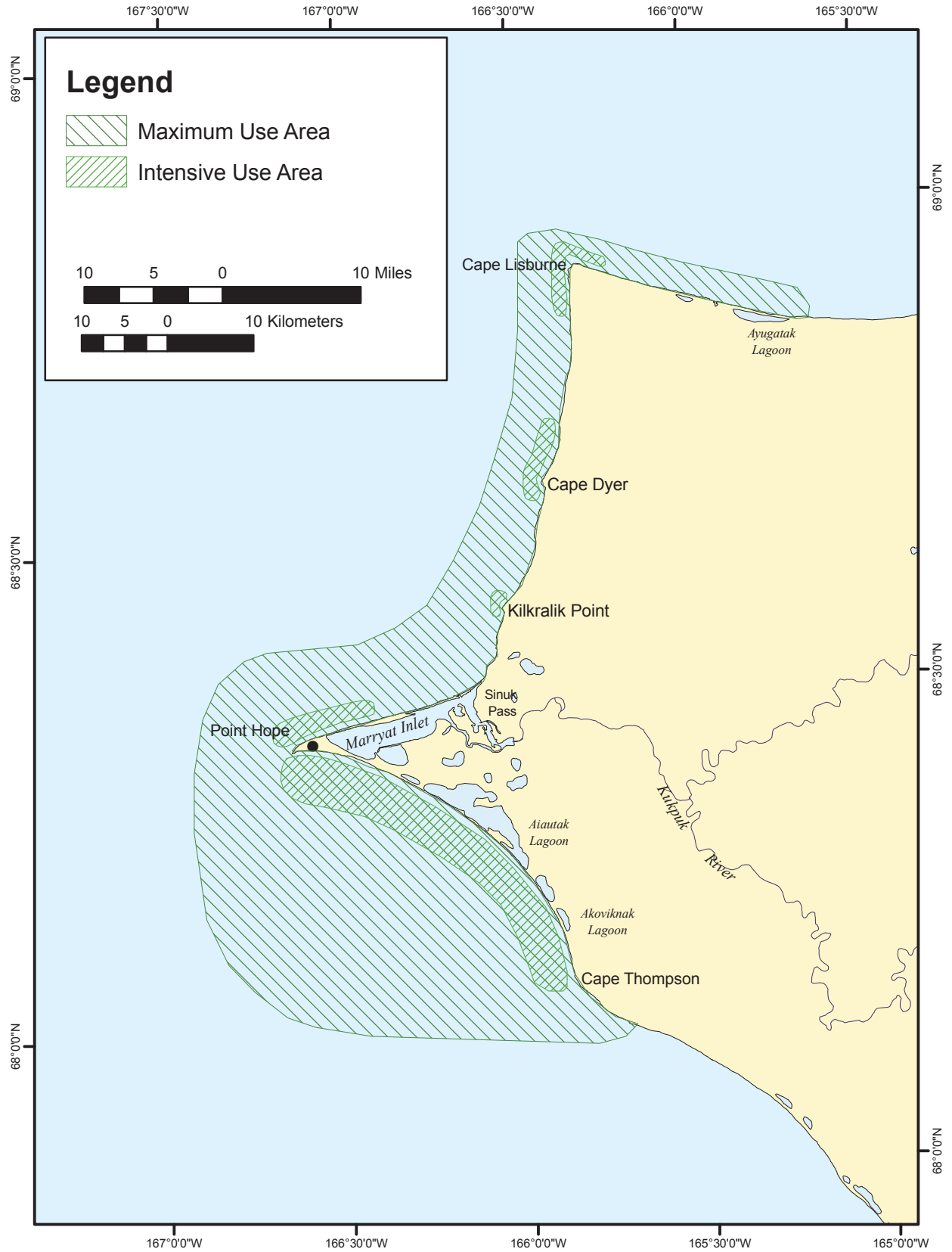
Source: From Braund & Burnham (1984)

Figure 3.4.2-96 Point Hope Historic Subsistence-Use Areas for Bowhead Whales



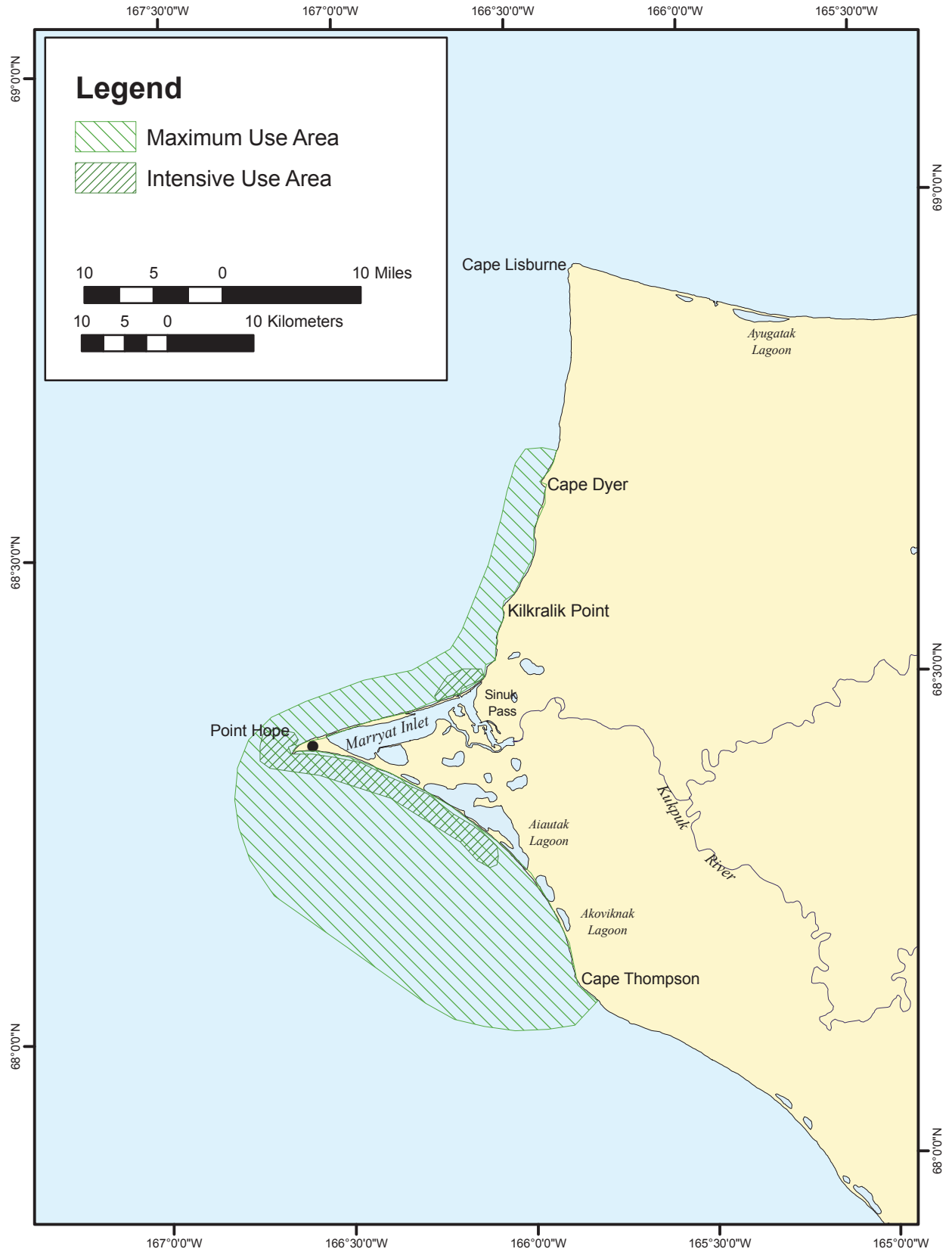
Source: From Braund & Burnham (1984)

Figure 3.4.2-97 Point Hope Subsistence-Use Areas for Seals



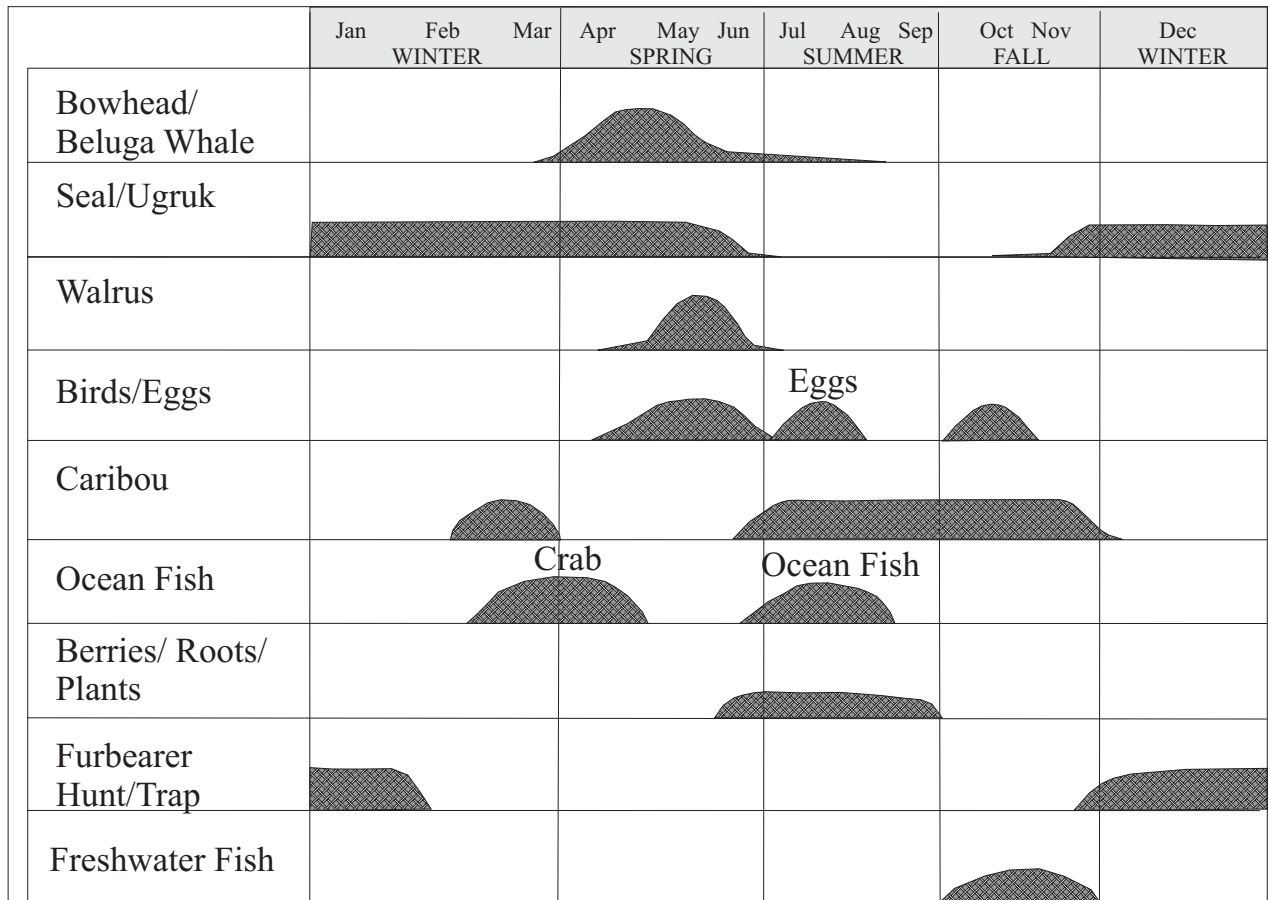
Source: From Braund & Burnham (1984)

Figure 3.4.2-98 Point Hope Subsistence-Use Areas for Walrus



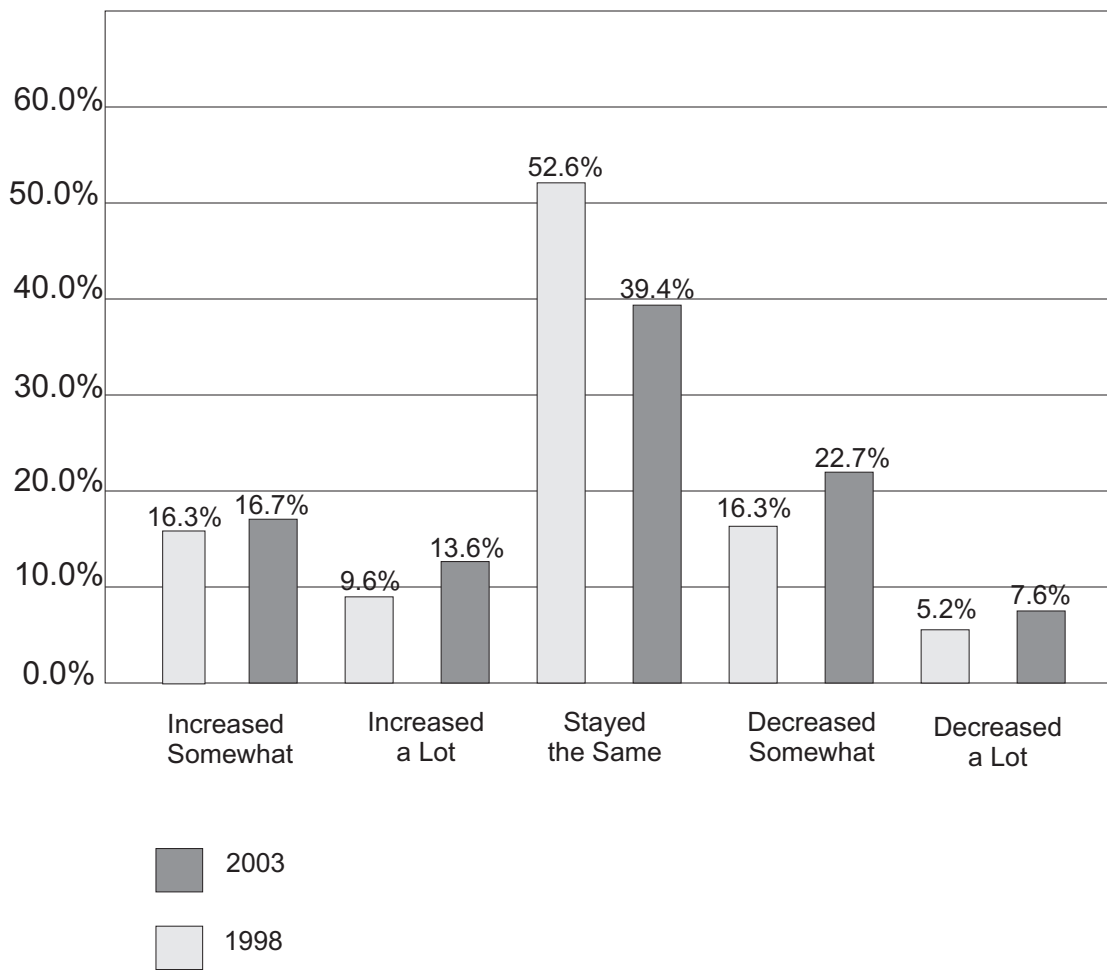
Source: From Braund & Burnham (1984)

Figure 3.4.2-99 Point Hope Subsistence-Use Areas for Beluga Whales



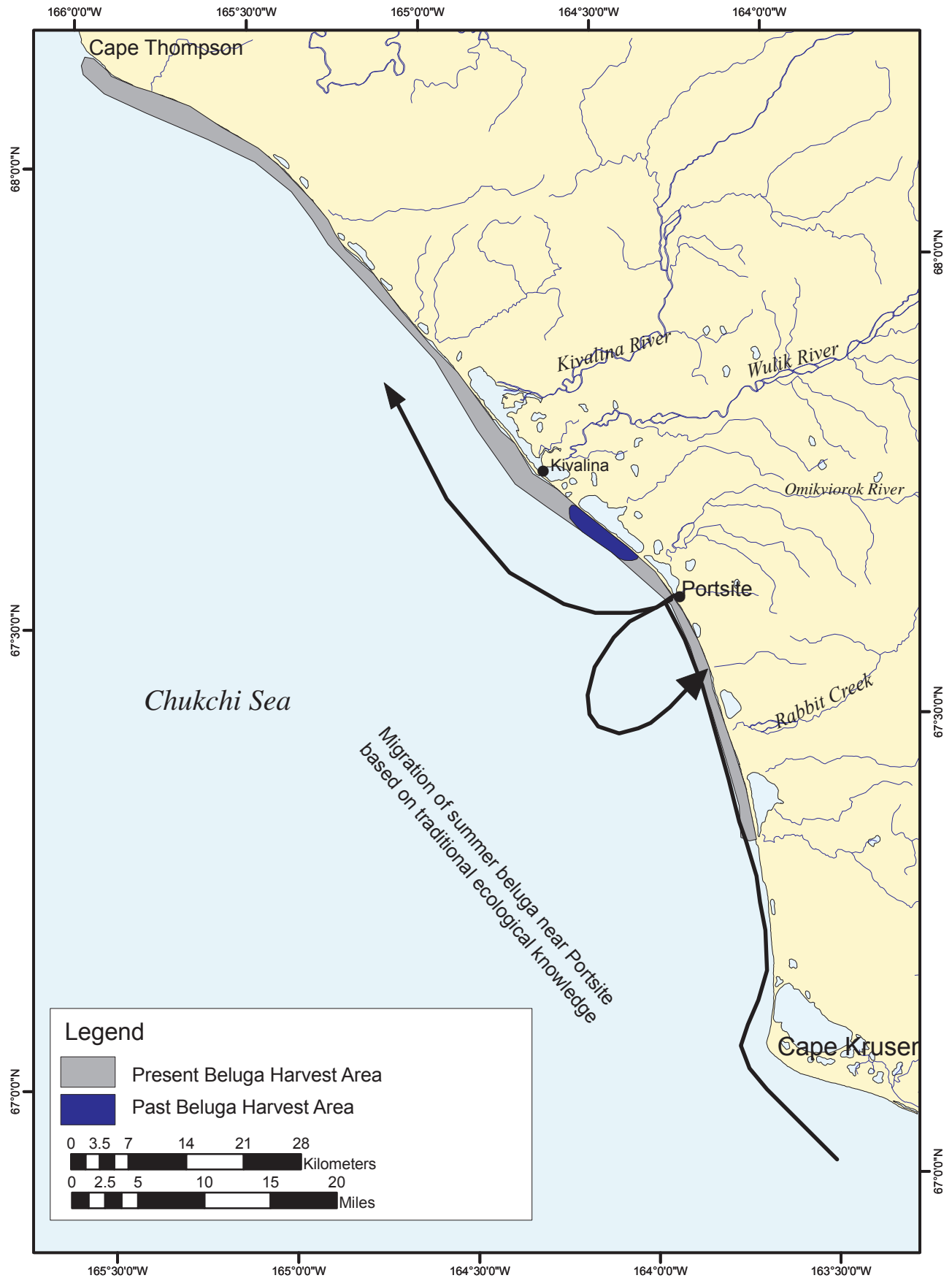
Source: Pedersen (1977)

Figure 3.4.2-100 Point Hope Annual Subsistence Cycle



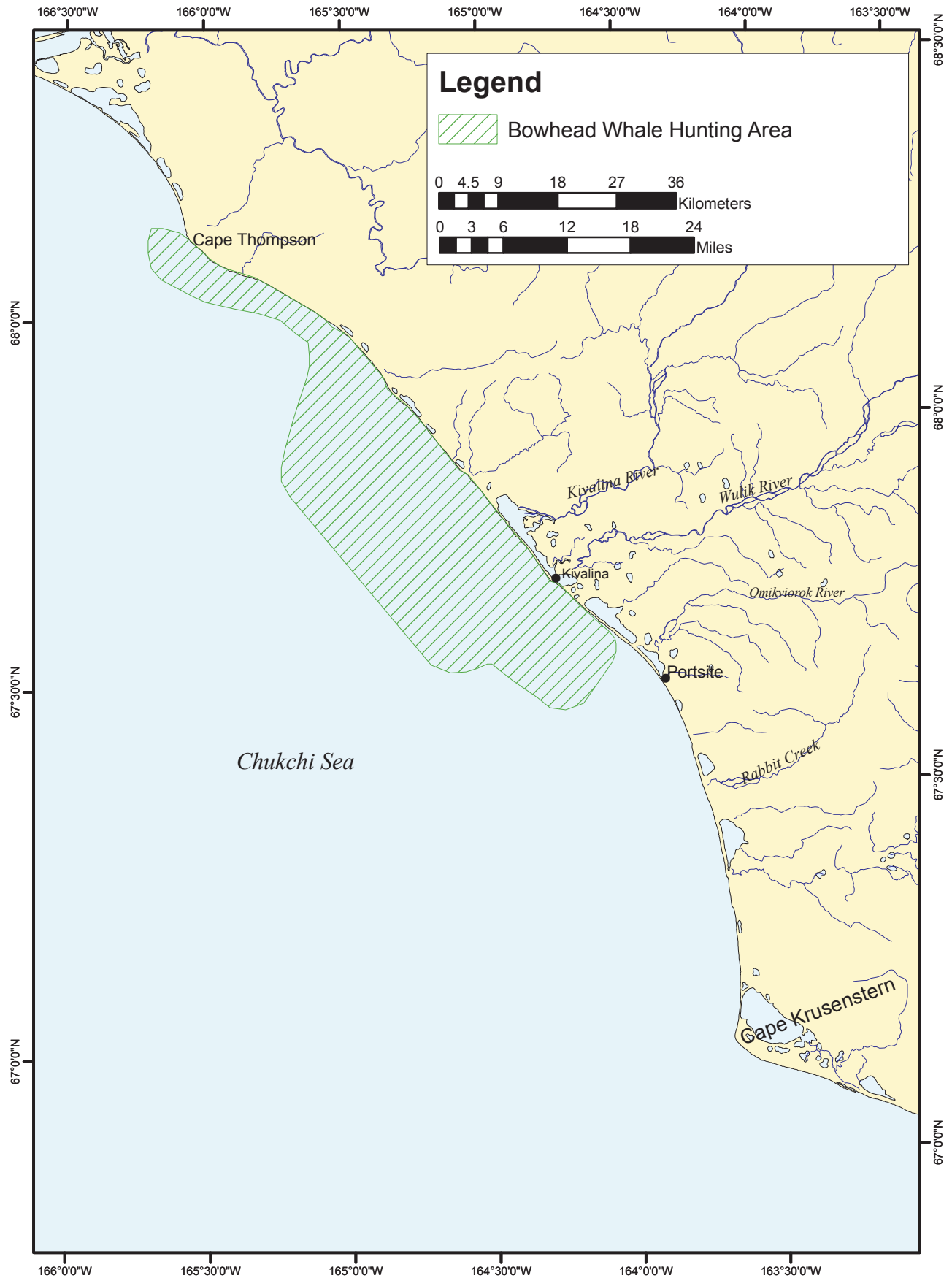
Source: Fuller and George (1997); North Slope Borough (2004)

Figure 3.4.2-101 Point Hope Changes in Subsistence Activity



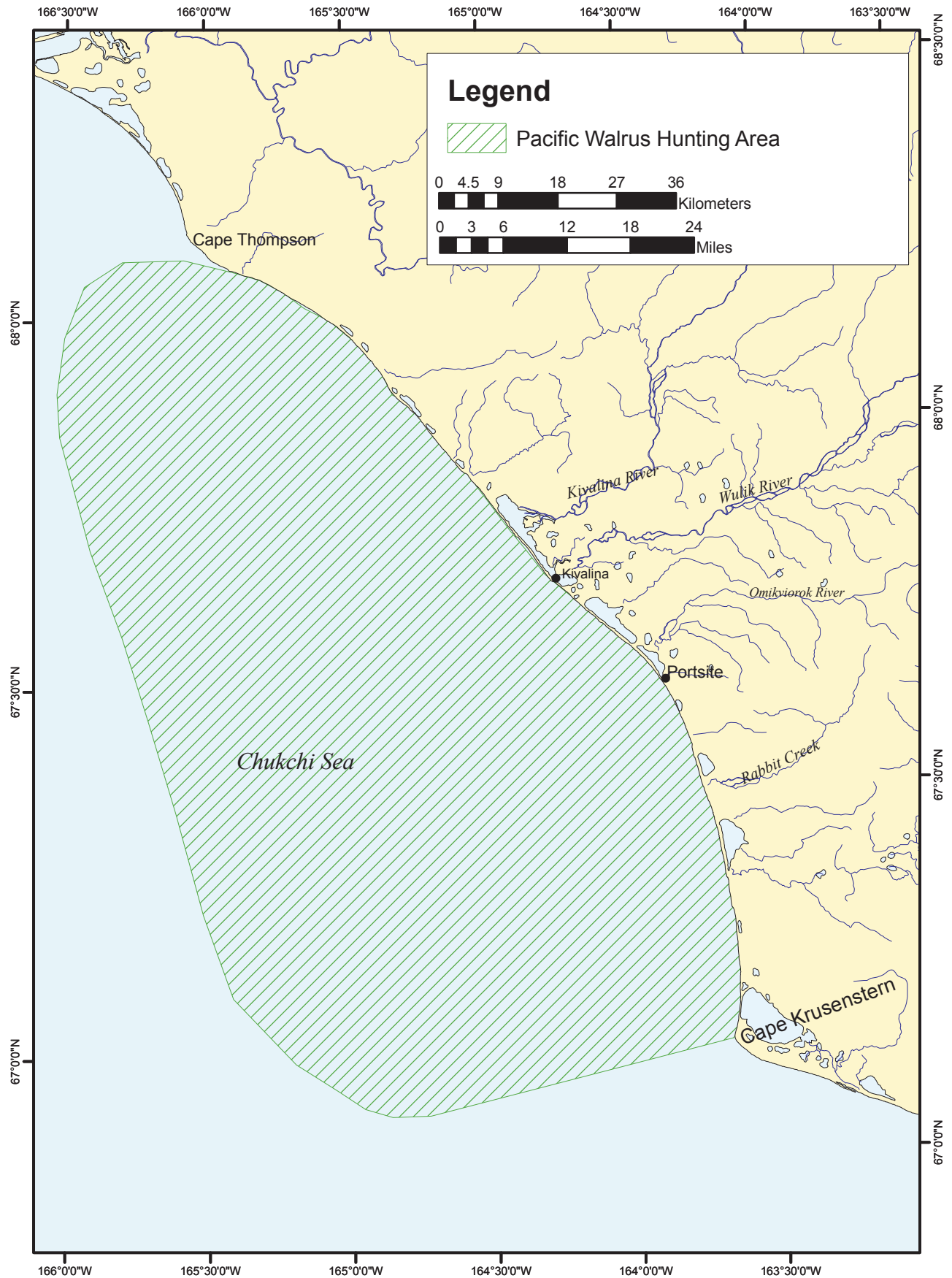
Source: Braund (2000)

Figure 3.4.2-102 Kivalina Past and Present Hunting Areas for the Eastern Chukchi Sea (Summer) Stock of Beluga Whale



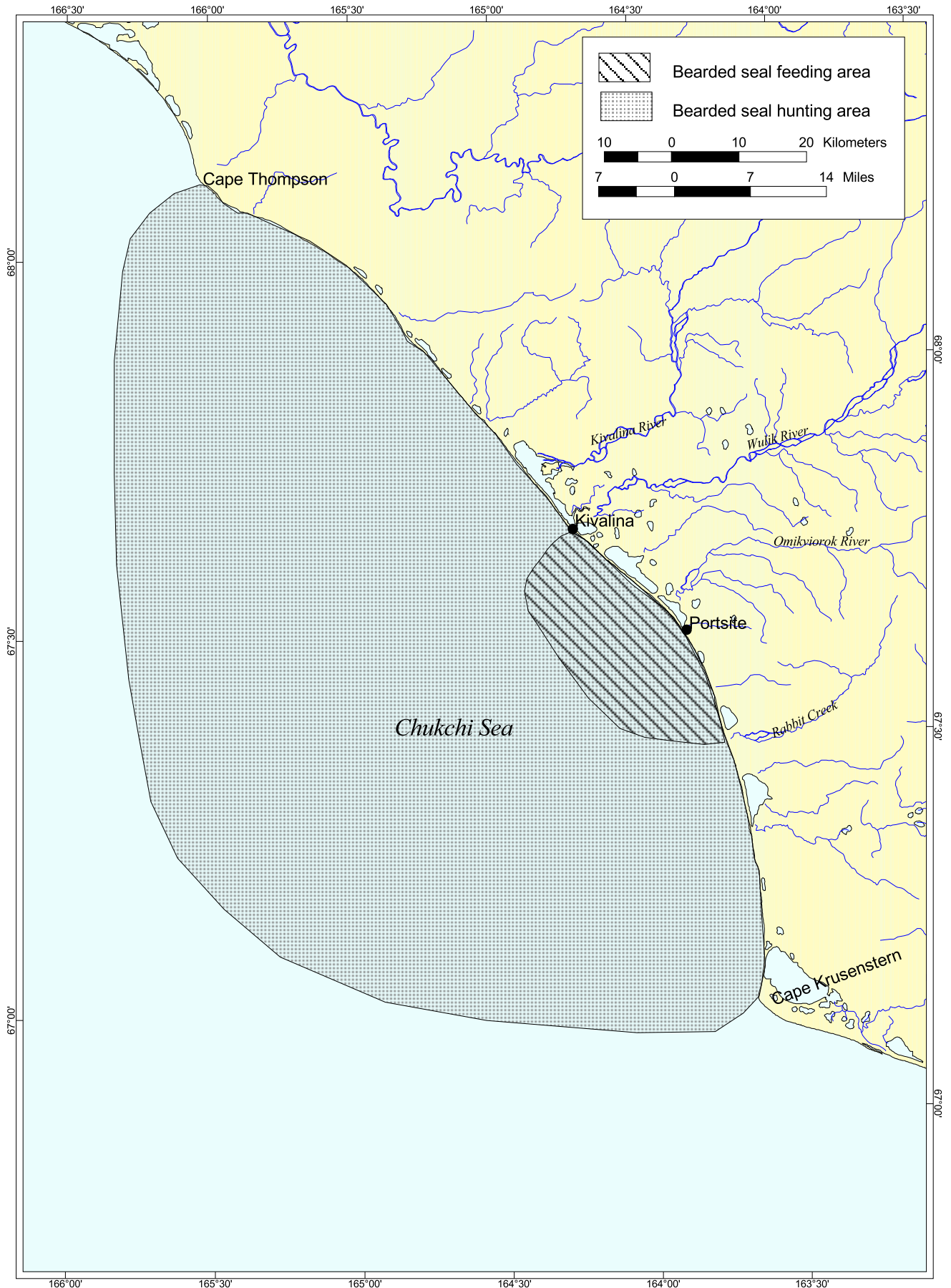
Source: Braund (2000)

Figure 3.4.2-103 Kivalina Hunting Area for Bowhead Whale



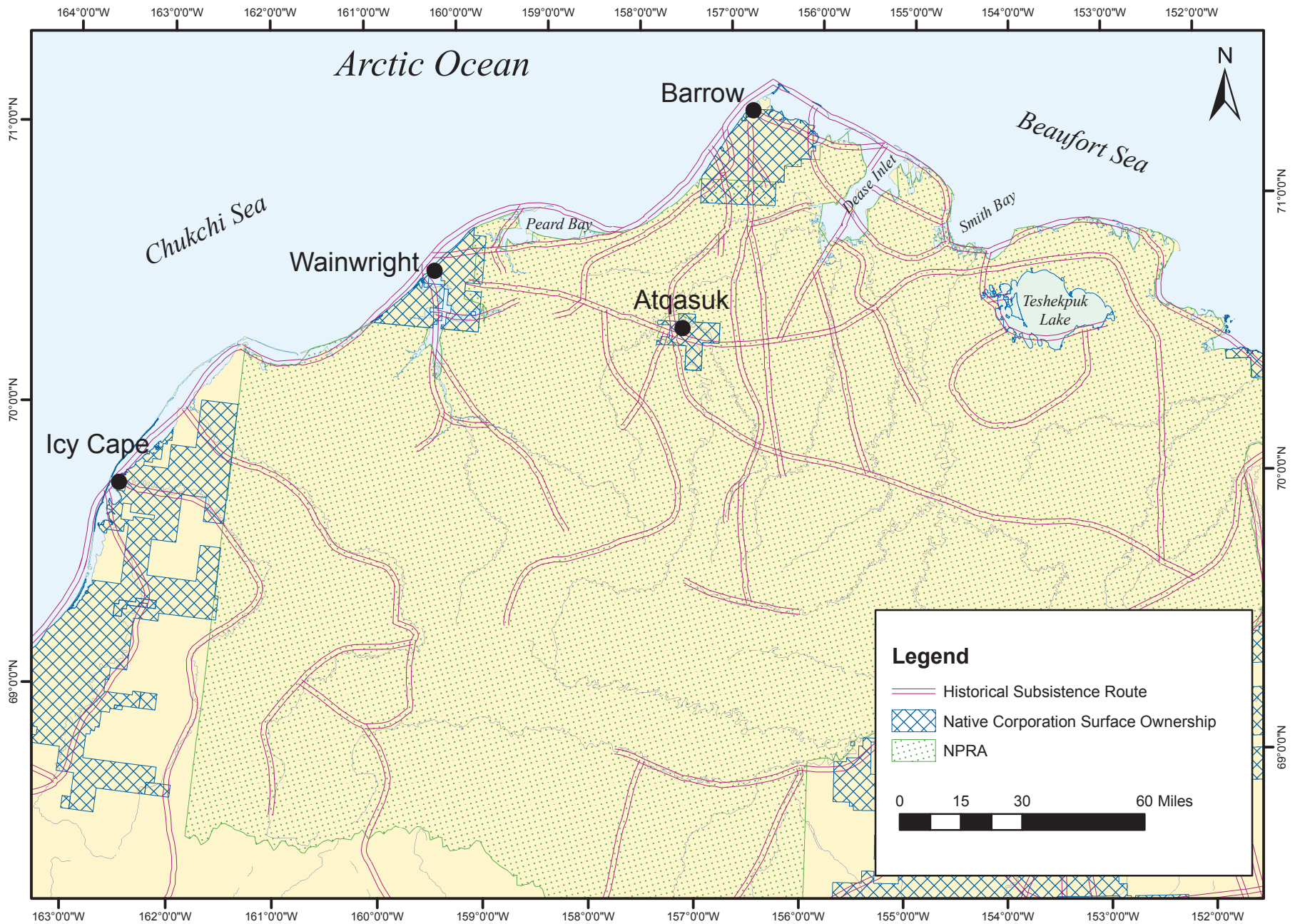
Source: Braund (2000)

Figure 3.4.2-104 Kivalina Hunting Area for Pacific Walrus



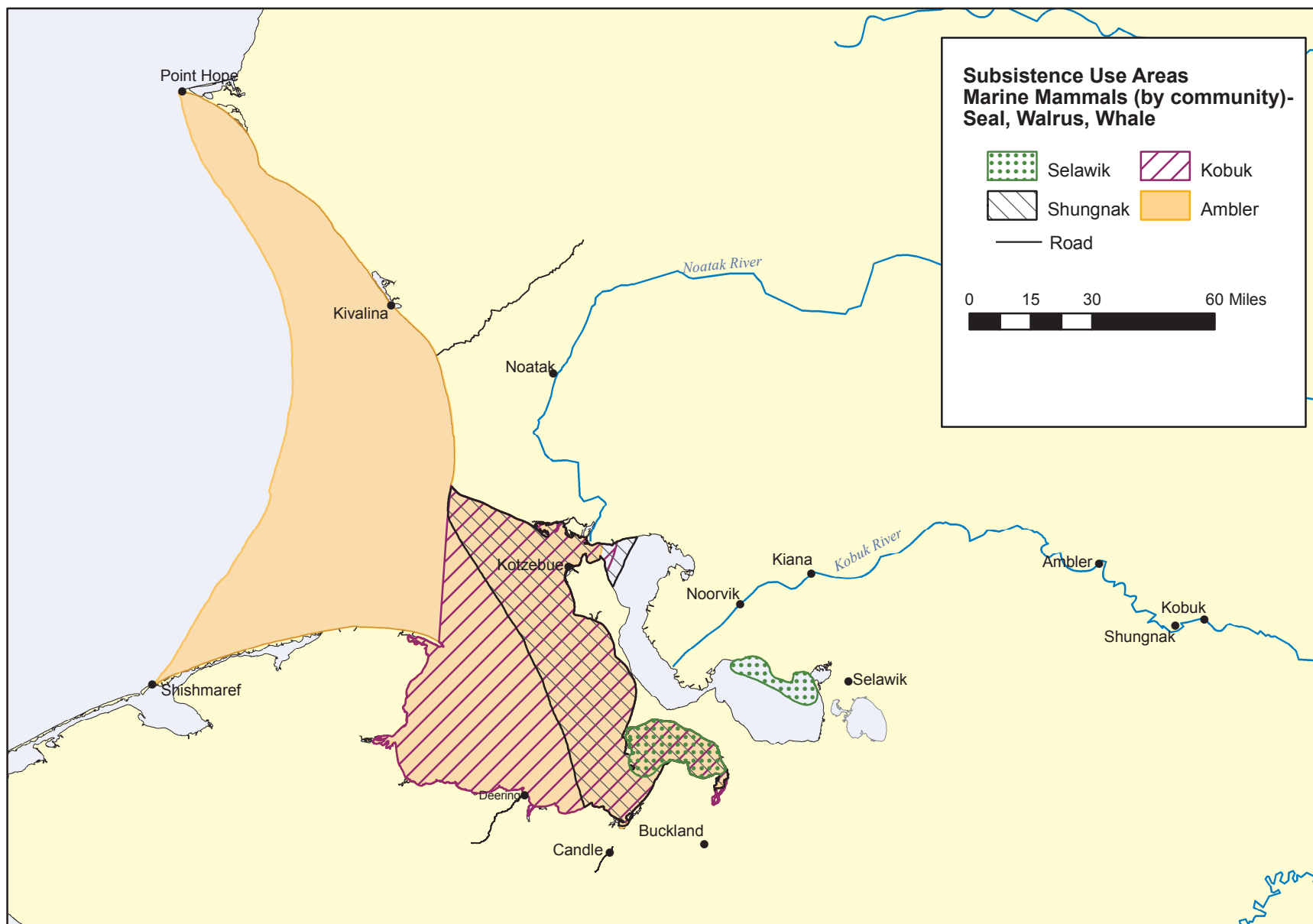
Source: Braund (2000)

Figure 3.4.2-105 Kivalina Hunting and Feeding Area of Bearded Seals



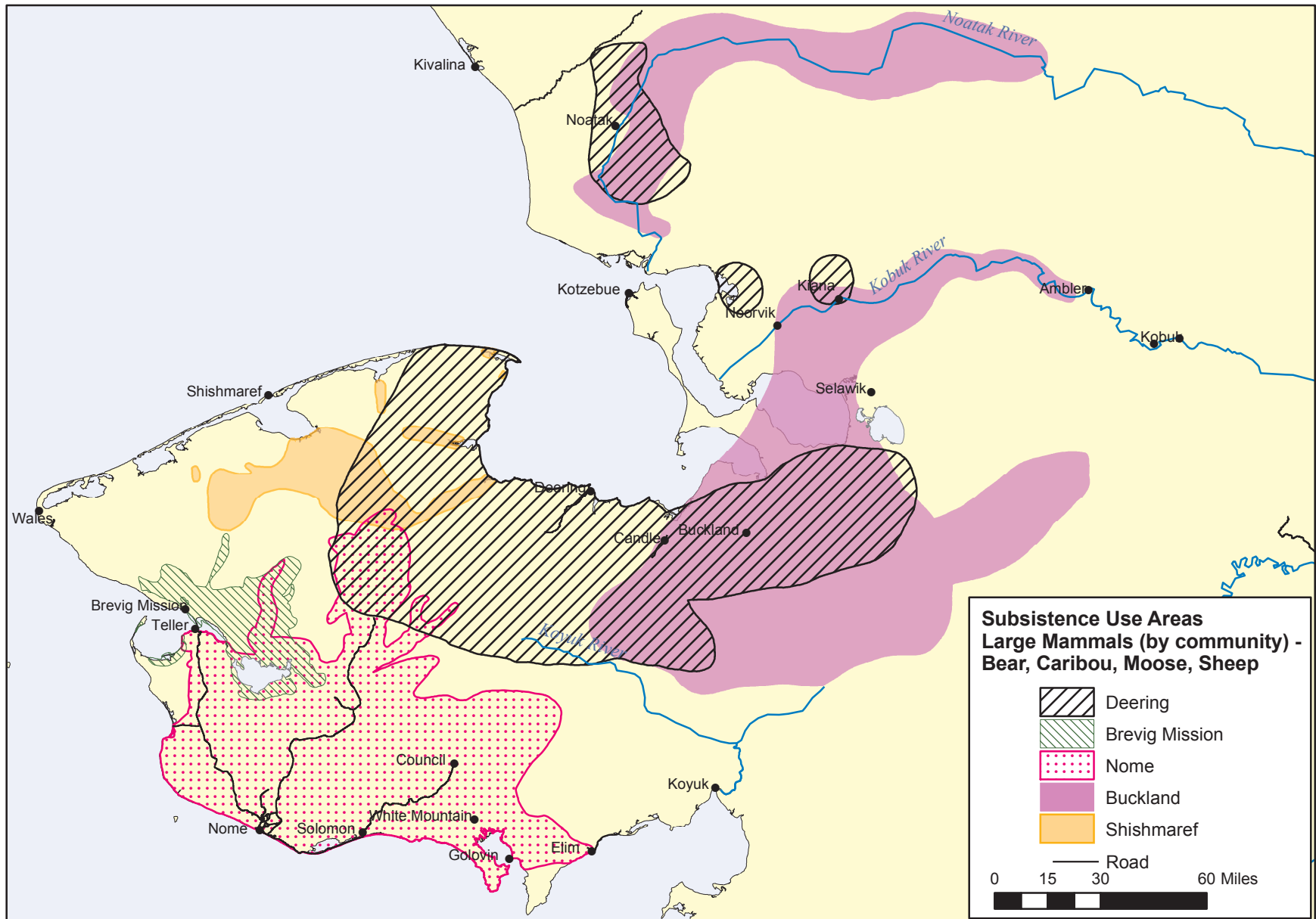
Source: University of Alaska, AEIDC and Arctic Slope Regional Corporation, 1974; Tremont, 1987 (OCS Report MMS 87-0010)

Figure 3.4.2-105a Historical Subsistence Access Routes on the North Slope



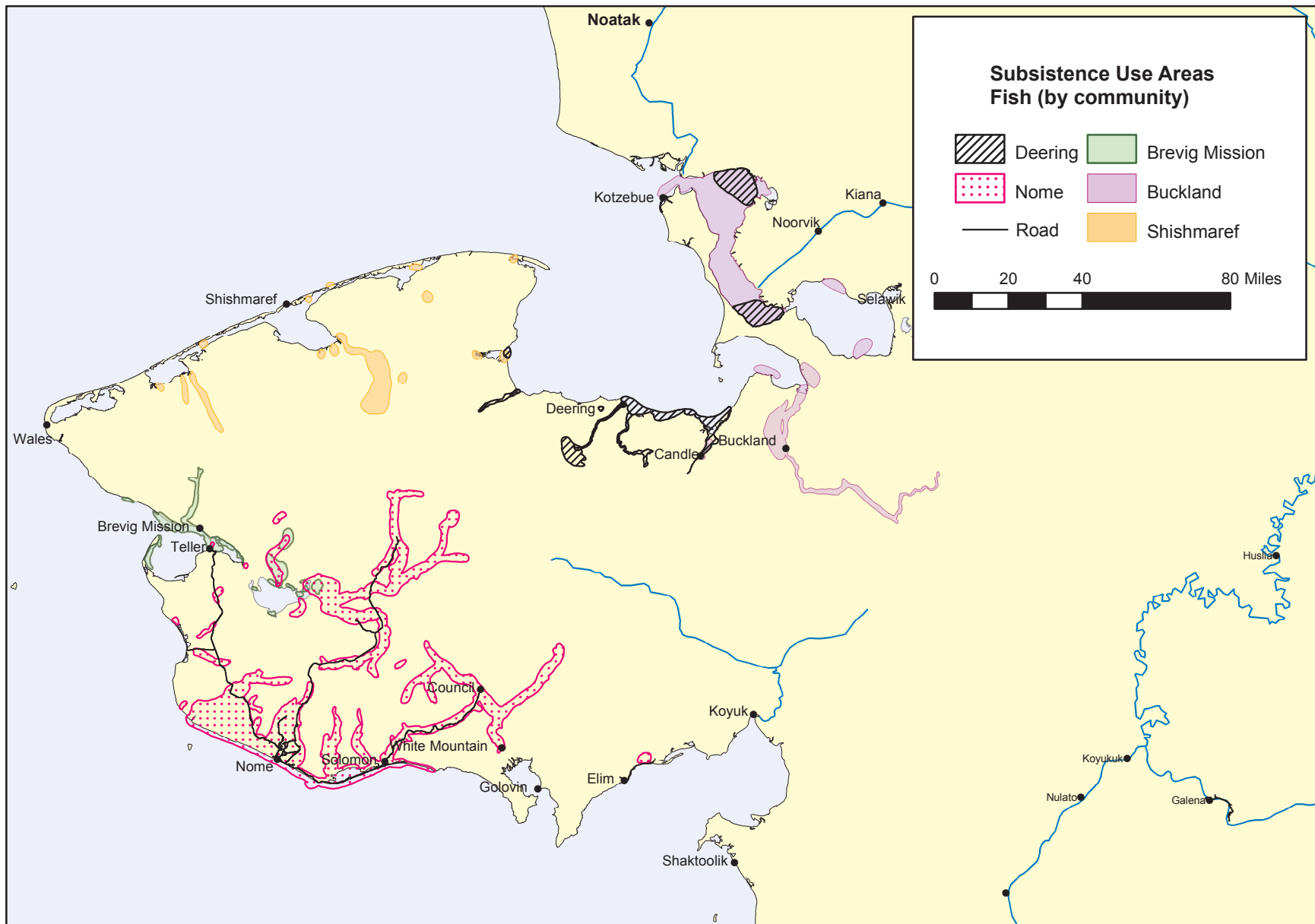
Source: State of Alaska - ADF&G, 1987; Kobuk-Seward Peninsula Proposed RMP/Final EIS, Bureau of Land Management - Alaska

Figure 3.4.2-106 Subsistence-Use Areas, Marine Mammals (Kobuk, Shungnak, Ambler, Selawik)



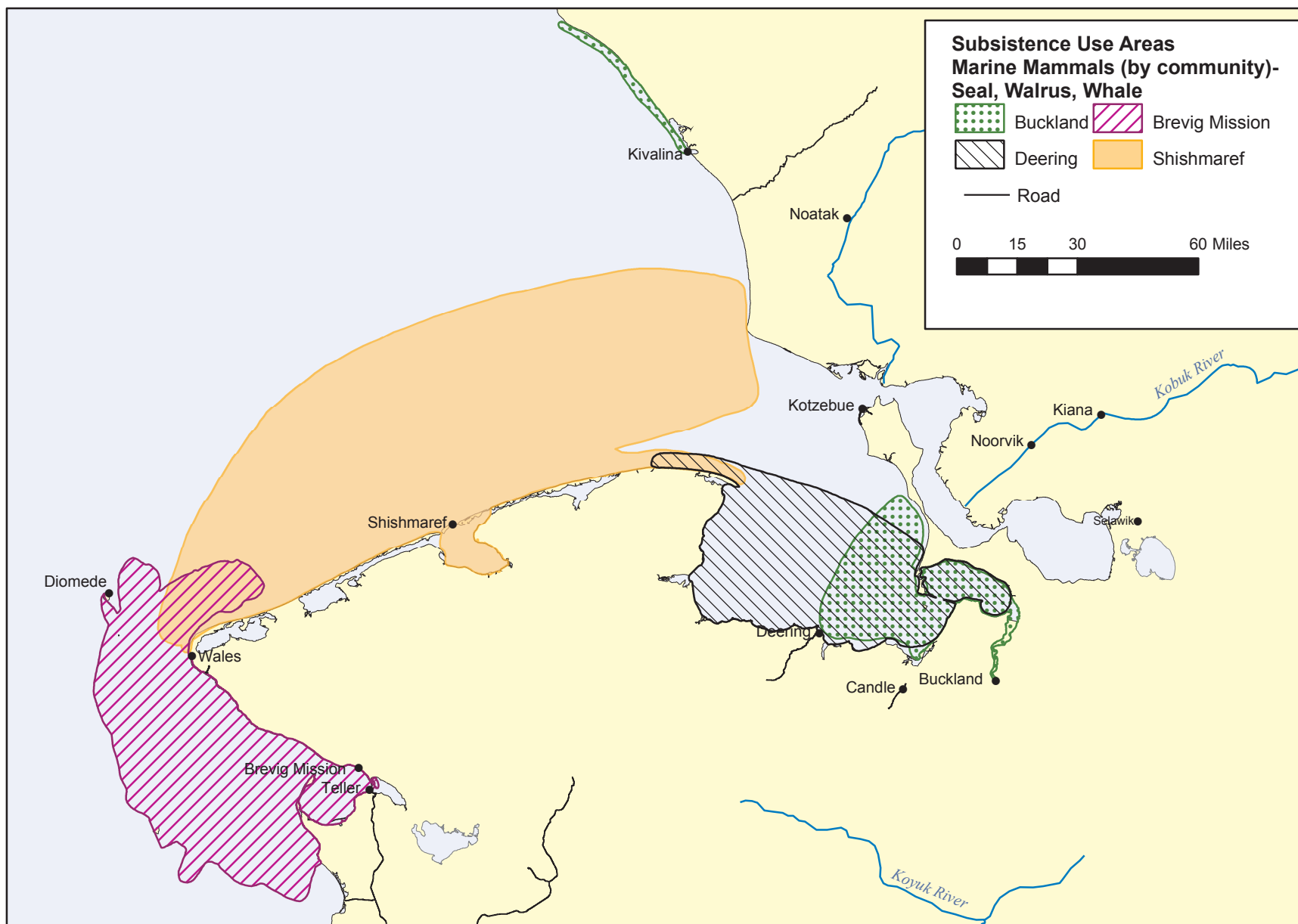
Source: State of Alaska - ADF&G, 1987; Kobuk-Seward Peninsula Proposed RMP/Final EIS, Bureau of Land Management - Alaska

Figure 3.4.2-107 Subsistence-Use Areas, Mammals (Buckland, Deering, Shishmaref)



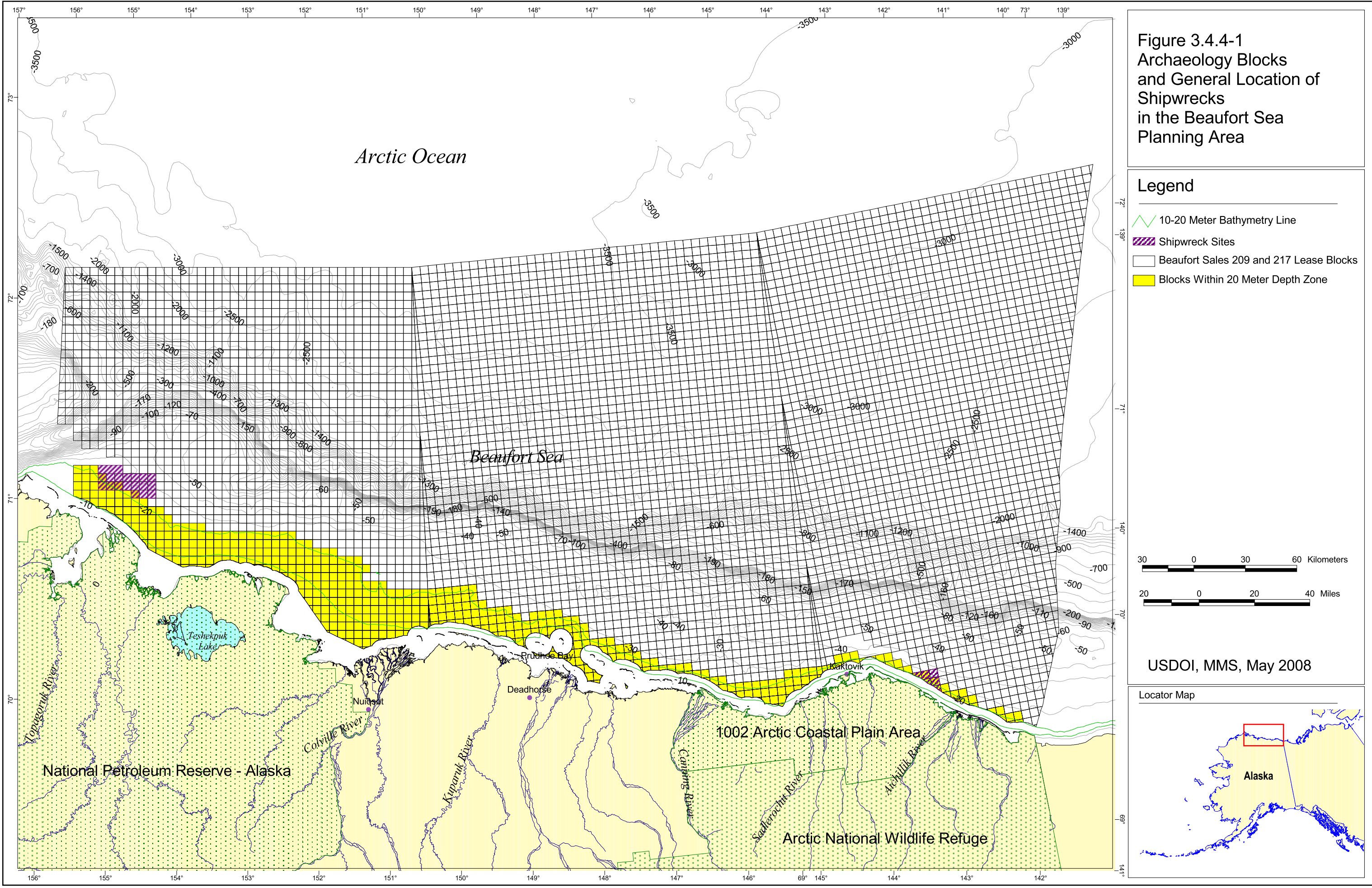
Source: State of Alaska - ADF&G, 1987; Kobuk-Seward Peninsula Proposed RMP/Final EIS, Bureau of Land Management - Alaska

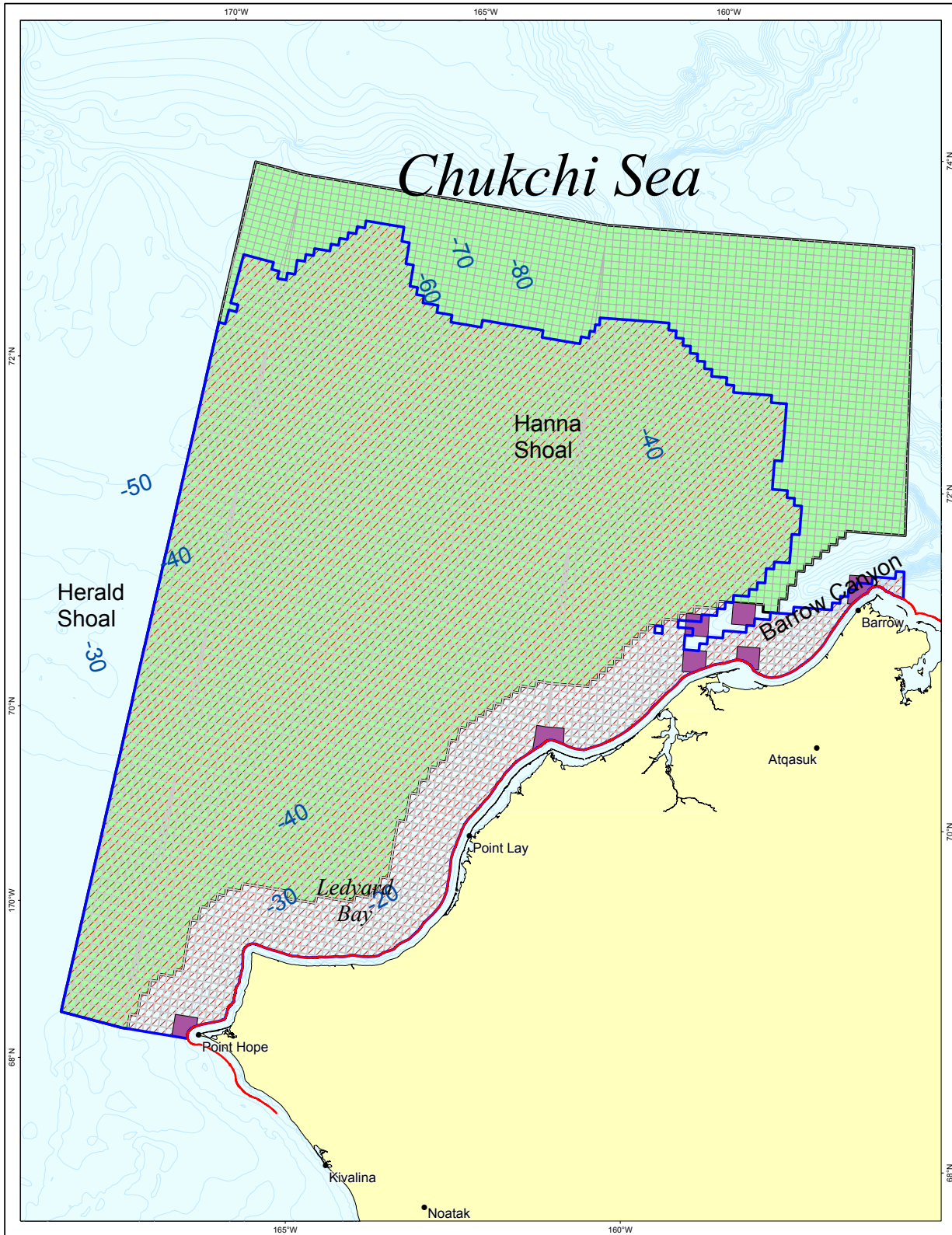
Figure 3.4.2-108 Subsistence-Use Areas, Fish (Buckland, Deering, Shishmaref)



Source: State of Alaska- ADF&G, 1987; Kobuk-Seward Peninsula Proposed RMP/Final EIS, Bureau of Land Management - Alaska

Figure 3.4.2-109 Subsistence-Use Areas, Marine Mammals (Buckland, Deering, Shishmaref)

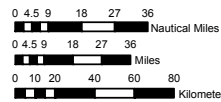




**3.4.4-2
Archaeology
Blocks and
General Location
of Shipwrecks
in the Chukchi
Sea Planning
Area**

Legend

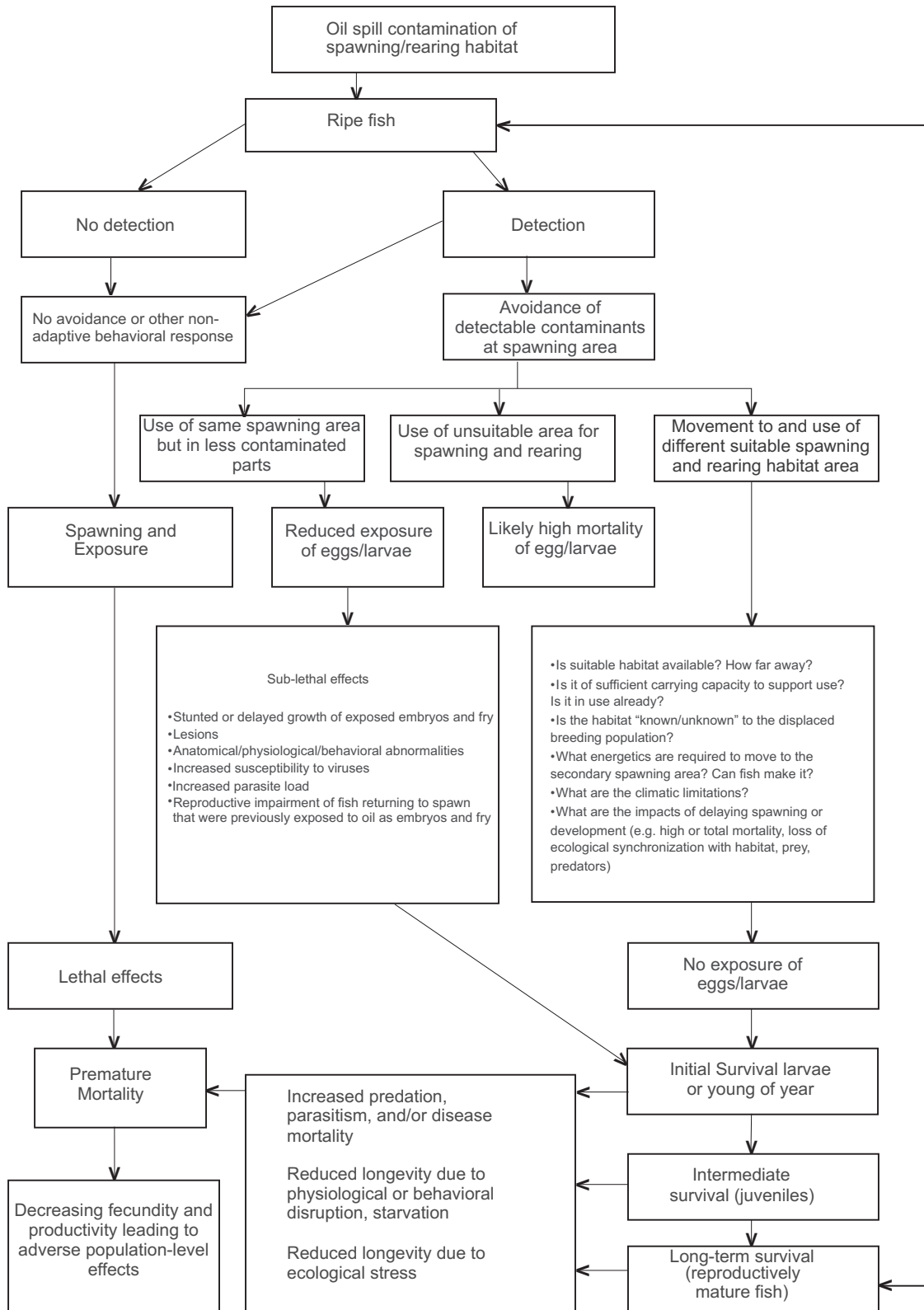
- Chukchi Sales 212 and 221 Lease Blocks
- Chukchi Sales 212 and 221 Lease Blocks Coincident with Archaeology Blocks
- Archaeology Blocks-Historic
- Archaeology Blocks- Prehistoric Blocks in 60 Meters or Less Water Depth
- Submerged Lands Act Boundary (3-mile Limit)



USDOI, MMS, May 2008

Locator Map





Source: USDO, MMS

Figure 4.4.1.4-1 Oil-Spill Impact Models for Selected Fishes using Nearshore/Intertidal Substrates as Spawning and/or Rearing Habitats.