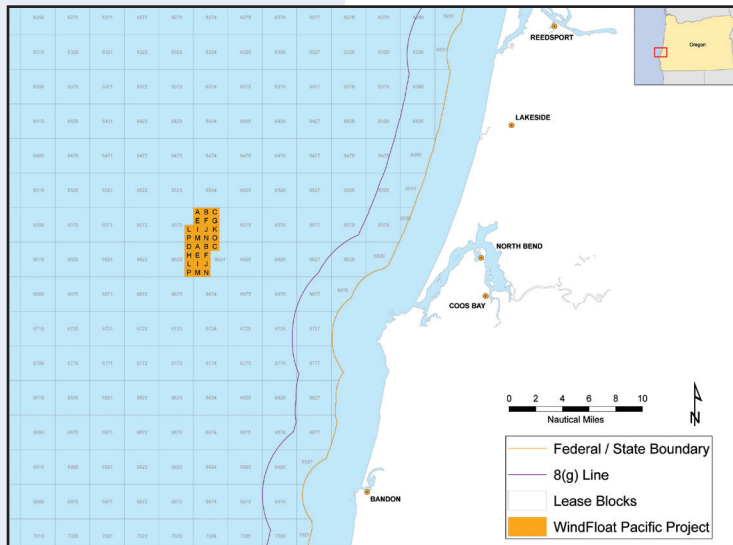




- » In May 2013, Principle Power Inc. submitted an unsolicited lease request to the Bureau of Ocean Energy Management (BOEM). The proposed lease area would be up to 15 square miles in size and approximately 16 nautical miles offshore Coos Bay.
- » Principle Power developed the WindFloat semi-submersible floating foundation for commercial-scale offshore wind turbines, specifically to address current costs, risks, and installation barriers in the offshore wind industry.

WindFloat Pacific Project Proposed Area



- » The WindFloat Pacific demonstration project would consist of up to five, 6-megawatt, wind turbines mounted on floating foundations. Each unit would be secured using vertical load anchors in 1,200 to 1,600 feet water depth.
- » A subsea cable running along the seafloor will connect the turbines together with one cable to shore to export the produced electricity.
- » Before Principle Power can install any facilities it must obtain BOEM approval. BOEM will prepare an environmental assessment that will consider the environmental consequences associated with the activities proposed for the WindFloat Pacific project.

- » WindFloat Pacific would be the first offshore wind project on the West Coast, and the first in the nation to use a floating structure to support offshore wind generation.
- » The proposed Wind Float Pacific Project is one of three “Offshore Wind Demonstration Projects” that were chosen to receive up to \$47 million each from the U.S. Department of Energy (DOE) as part of DOE’s effort to lower costs and establish a domestic offshore wind industry. Principle Power received an initial \$4 million from DOE for the project in December 2012.

**BOEM PACIFIC
OCS REGION**

770 Paseo Camarillo,
2nd Floor
Camarillo, CA 93010
(805) 384-4706
<http://www.boem.gov>