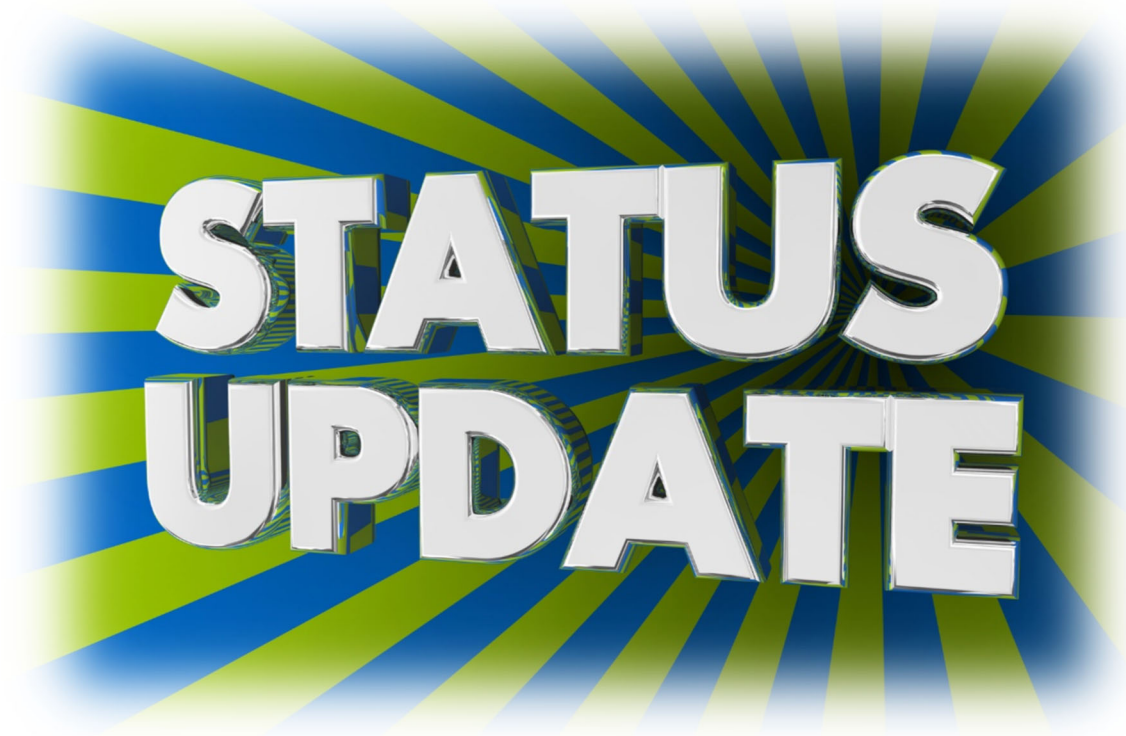


# *Status of Leases and Qualified Companies*

*Pacific OCS Region*

*December 2024*



Pacific OCS Region  
U.S. Department of the Interior

**Additional copies may be obtained from:**

**U.S. Department of the Interior  
Bureau of Ocean Energy Management  
Pacific OCS Region  
760 Paseo Camarillo  
Camarillo, CA 93010**

**Attn: Keisha Douglas  
Leasing Specialist  
Telephone: (805) 384-6394**

# TABLE OF CONTENTS

Serial Register Summary (Active Leases)

Total Active Leases and Acreage

Active Units

Leases with Actively Producing Wells

Aliquot Portions of Leases

Leases Incorporating More than One Block

Calls for Information and Nomination through Final Notices of Sales

Sales Results and Active Leases

Proposed Sales Cancelled

Boundaries and Maps

- San Pedro Bay
- Santa Barbara Channel
- Santa Maria Basin

Names and Addresses of Qualified Companies

**Serial Register Summary  
(Active Leases)  
Report**

UNITED STATES DEPARTMENT OF THE INTERIOR  
BUREAU OF OCEAN ENERGY MANAGEMENT  
PACIFIC OCS REGION

Lease Number(S): ACTIVE

## Serial Register Summary

From: P00180

To: P00461

Lease Tract	Acres Hectares	Area Block Map/OPD	Alq Current Record Title Interest	Percent Interest	Status			
P00180	A 5760.000000	SM 6685	SABLE OFFSHORE CORP	100.00000	UNIT	<b>Bonus:</b>	\$	1,180,800.00
CAL322		SM 6635			<b>Term:</b> 5	<b>Effective Date:</b>		04/01/1968
<b>Section:</b> 8		SM 6636			<b>Unit Name(s):</b>	<b>Expected Term :</b>		03/31/1973
Oil and Gas P4		SM 6686			SANTA YNEZ	<b>Bid Type/Royal:</b>		16.666667
		NI10-06				<b>Discovery Date:</b>		10/04/1971
	02/06/1968							
<b>Designated Operator(s):</b>								
SABLE OFFSHORE CORP								
P00181	A 5760.000000	SM 6684	SABLE OFFSHORE CORP	100.00000	UNIT	<b>Bonus:</b>	\$	6,664,320.00
CAL323		SM 6634			<b>Term:</b> 5	<b>Effective Date:</b>		04/01/1968
<b>Section:</b> 8		SM 6635			<b>Unit Name(s):</b>	<b>Expected Term :</b>		03/31/1973
Oil and Gas P4		SM 6685			SANTA YNEZ	<b>Bid Type/Royal:</b>		16.666667
		NI10-06				<b>Discovery Date:</b>		12/21/1971
	02/06/1968							
<b>Designated Operator(s):</b>								
SABLE OFFSHORE CORP								
P00182	A 5760.000000	SM 6732	SABLE OFFSHORE CORP	100.00000	UNIT	<b>Bonus:</b>	\$	2,062,771.20
CAL325		SM 6682			<b>Term:</b> 5	<b>Effective Date:</b>		04/01/1968
<b>Section:</b> 8		SM 6683			<b>Unit Name(s):</b>	<b>Expected Term :</b>		03/31/1973
Oil and Gas P4		SM 6733			SANTA YNEZ	<b>Bid Type/Royal:</b>		16.666667
		NI10-06				<b>Discovery Date:</b>		05/02/1970
	02/06/1968							
<b>Designated Operator(s):</b>								
SABLE OFFSHORE CORP								

UNITED STATES DEPARTMENT OF THE INTERIOR  
BUREAU OF OCEAN ENERGY MANAGEMENT  
PACIFIC OCS REGION

Lease Number(S): ACTIVE

## Serial Register Summary

From: P00180

To: P00461

Lease Tract	Acres Hectares	Area Block Map/OPD	Alq Current Record Title Interest	Percent Interest	Status		
P00183	A 5760.000000	SM 6731	SABLE OFFSHORE CORP	100.00000	UNIT	<b>Bonus:</b>	\$ 11,600,640.00
CAL326		SM 6681			<b>Term:</b> 5	<b>Effective Date:</b>	04/01/1968
<b>Section:</b> 8		SM 6682			<b>Unit Name(s):</b>	<b>Expected Term :</b>	03/31/1973
Oil and Gas P4		SM 6732			SANTA YNEZ	<b>Bid Type/Royal:</b>	16.666667
		NI10-06				<b>Discovery Date:</b>	05/31/1971
	02/06/1968						
<b>Designated Operator(s):</b>							
SABLE OFFSHORE CORP							
P00187	A 4946.000000	SM 6636	SABLE OFFSHORE CORP	100.00000	UNIT	<b>Bonus:</b>	\$ 27,831,142.00
CAL331		SM 6586			<b>Term:</b> 5	<b>Effective Date:</b>	04/01/1968
<b>Section:</b> 8		SM 6587			<b>Unit Name(s):</b>	<b>Expected Term :</b>	03/31/1973
Oil and Gas P4		SM 6637			SANTA YNEZ	<b>Bid Type/Royal:</b>	16.666667
		NI10-06				<b>Discovery Date:</b>	09/23/1983
	02/06/1968						
<b>Designated Operator(s):</b>							
SABLE OFFSHORE CORP							
P00188	A 5681.000000	SM 6635	SABLE OFFSHORE CORP	100.00000	UNIT	<b>Bonus:</b>	\$ 12,123,254.00
CAL332		SM 6585			<b>Term:</b> 5	<b>Effective Date:</b>	04/01/1968
<b>Section:</b> 8		SM 6586			<b>Unit Name(s):</b>	<b>Expected Term :</b>	03/31/1973
Oil and Gas P4		SM 6636			SANTA YNEZ	<b>Bid Type/Royal:</b>	16.666667
		NI10-06				<b>Discovery Date:</b>	07/13/1969
	02/06/1968						
<b>Designated Operator(s):</b>							
SABLE OFFSHORE CORP							

UNITED STATES DEPARTMENT OF THE INTERIOR  
BUREAU OF OCEAN ENERGY MANAGEMENT  
PACIFIC OCS REGION

Lease Number(S): ACTIVE

## Serial Register Summary

From: P00180

To: P00461

Lease Tract	Acres Hectares	Area Block Map/OPD	Alq Current Record Title Interest	Percent Interest	Status		
P00189	A 3840.000000	SM 6634	SABLE OFFSHORE CORP	100.00000	UNIT	<b>Bonus:</b>	\$ 323,020.80
CAL333		SM 6584			<b>Term:</b> 5	<b>Effective Date:</b>	04/01/1968
<b>Section:</b> 8		SM 6585			<b>Unit Name(s):</b>	<b>Expected Term :</b>	03/31/1973
Oil and Gas P4		SM 6635			SANTA YNEZ	<b>Bid Type/Royal:</b>	16.666667
		NI10-06				<b>Discovery Date:</b>	
	02/06/1968						
<b>Designated Operator(s):</b>							
SABLE OFFSHORE CORP							
P00190	A 2880.000000	SM 6634	SABLE OFFSHORE CORP	100.00000	UNIT	<b>Bonus:</b>	\$ 21,021,120.00
CAL334		SM 6635			<b>Term:</b> 5	<b>Effective Date:</b>	04/01/1968
<b>Section:</b> 8		NI10-06			<b>Unit Name(s):</b>	<b>Expected Term :</b>	03/31/1973
Oil and Gas P4					SANTA YNEZ	<b>Bid Type/Royal:</b>	16.666667
	02/06/1968					<b>Discovery Date:</b>	07/20/1969
<b>Designated Operator(s):</b>							
SABLE OFFSHORE CORP							
P00191	A 5760.000000	SM 6683	SABLE OFFSHORE CORP	100.00000	UNIT	<b>Bonus:</b>	\$ 213,811.20
CAL335		SM 6633			<b>Term:</b> 5	<b>Effective Date:</b>	04/01/1968
<b>Section:</b> 8		SM 6584			<b>Unit Name(s):</b>	<b>Expected Term :</b>	03/31/1973
Oil and Gas P4		SM 6634			SANTA YNEZ	<b>Bid Type/Royal:</b>	16.666667
		SM 6684				<b>Discovery Date:</b>	03/08/1971
	02/06/1968	NI10-06					
<b>Designated Operator(s):</b>							
SABLE OFFSHORE CORP							
P00192	A 3851.000000	SM 6632	SABLE OFFSHORE CORP	100.00000	UNIT	<b>Bonus:</b>	\$ 760,000.00
CAL336		SM 6582			<b>Term:</b> 5	<b>Effective Date:</b>	04/01/1968
<b>Section:</b> 8		SM 6583			<b>Unit Name(s):</b>	<b>Expected Term :</b>	03/31/1973
Oil and Gas P4		SM 6633			SANTA YNEZ	<b>Bid Type/Royal:</b>	16.666667
	02/06/1968	NI10-06				<b>Discovery Date:</b>	
<b>Designated Operator(s):</b>							
SABLE OFFSHORE CORP							

UNITED STATES DEPARTMENT OF THE INTERIOR  
 BUREAU OF OCEAN ENERGY MANAGEMENT  
 PACIFIC OCS REGION

Lease Number(s): ACTIVE  
 From: P00180  
 To: P00461

Serial Register Summary

Lease Tract	Acres Hectares	Area Block Map/OPD	Alq Current Record Title Interest	Percent Interest	Status			
P00193	A 3316.000000	SM 6631	SABLE OFFSHORE CORP	100.00000	UNIT	<b>Bonus:</b>	\$	2,822,313.92
CAL338		SM 6632			<b>Term:</b> 5	<b>Effective Date:</b>		04/01/1968
<b>Section:</b> 8		SM 6582			<b>Unit Name(s):</b>	<b>Expected Term :</b>		03/31/1973
Oil and Gas P4		NI10-06			SANTA YNEZ	<b>Bid Type/Royal:</b>		16.666667
						<b>Discovery Date:</b>		09/22/1970
	02/06/1968							
<b>Designated Operator(s):</b>								
SABLE OFFSHORE CORP								
P00194	A 2880.000000	SM 6681	SABLE OFFSHORE CORP	100.00000	UNIT	<b>Bonus:</b>	\$	582,105.60
CAL339		SM 6631			<b>Term:</b> 5	<b>Effective Date:</b>		04/01/1968
<b>Section:</b> 8		SM 6632			<b>Unit Name(s):</b>	<b>Expected Term :</b>		03/31/1973
Oil and Gas P4		SM 6682			SANTA YNEZ	<b>Bid Type/Royal:</b>		16.666667
		NI10-06				<b>Discovery Date:</b>		08/30/1970
	02/06/1968							
<b>Designated Operator(s):</b>								
SABLE OFFSHORE CORP								
P00195	A 5695.000000	SM 6680	SABLE OFFSHORE CORP	100.00000	UNIT	<b>Bonus:</b>	\$	1,532,638.40
CAL340		SM 6630			<b>Term:</b> 5	<b>Effective Date:</b>		03/01/1968
<b>Section:</b> 8		SM 6631			<b>Unit Name(s):</b>	<b>Expected Term :</b>		02/28/1973
Oil and Gas P4		SM 6681			SANTA YNEZ	<b>Bid Type/Royal:</b>		16.666667
		NI10-06				<b>Discovery Date:</b>		
	02/06/1968							
<b>Designated Operator(s):</b>								
SABLE OFFSHORE CORP								
P00202	A 2824.000000	LA 6965	CHANNEL ISLANDS CAPITAL, L.L.C.	95.82000	UNIT	<b>Bonus:</b>	\$	1,012,000.00
CAL350		LA 6915	DCOR, L.L.C.	4.18000	<b>Term:</b> 5	<b>Effective Date:</b>		04/01/1968
<b>Section:</b> 8		LA 6966			<b>Unit Name(s):</b>	<b>Expected Term :</b>		03/31/1973
Oil and Gas P4		NI11-04			PT HUENEME	<b>Bid Type/Royal:</b>		16.666667
						<b>Discovery Date:</b>		06/19/1969
	02/06/1968							
<b>Designated Operator(s):</b>								
DCOR, L.L.C.								



UNITED STATES DEPARTMENT OF THE INTERIOR  
BUREAU OF OCEAN ENERGY MANAGEMENT  
PACIFIC OCS REGION

Lease Number(S): ACTIVE

## Serial Register Summary

From: P00180

To: P00461

Lease Tract	Acres Hectares	Area Block Map/OPD	Alq Current Record Title Interest	Percent Interest	Status			
P00203	A 5760.000000	LA 6964	CHANNEL ISLANDS CAPITAL, L.L.C.	95.82000	UNIT	<b>Bonus:</b>	\$	5,567,000.00
CAL351		LA 6914	DCOR, L.L.C.	4.18000	<b>Term:</b> 5	<b>Effective Date:</b>		04/01/1968
<b>Section:</b> 8		LA 6915			<b>Unit Name(s):</b>	<b>Expected Term :</b>		03/31/1973
Oil and Gas P4		LA 6965			PT HUENEME	<b>Bid Type/Royal:</b>		16.666667
		NI11-04				<b>Discovery Date:</b>		08/19/1969
	02/06/1968							
<b>Designated Operator(s):</b>								
DCOR, L.L.C.								
P00215	A 5760.000000	LA 6863	CHANNEL ISLANDS CAPITAL, L.L.C.	97.91000	UNIT	<b>Bonus:</b>	\$	1,181,491.20
CAL372		LA 6813	DCOR, L.L.C.	2.09000	<b>Term:</b> 5	<b>Effective Date:</b>		04/01/1968
<b>Section:</b> 8		LA 6814			<b>Unit Name(s):</b>	<b>Expected Term :</b>		03/31/1973
Oil and Gas P4		LA 6864			SNTCLR	<b>Bid Type/Royal:</b>		16.666667
		NI11-04				<b>Discovery Date:</b>		08/05/1973
	02/06/1968							
<b>Designated Operator(s):</b>								
DCOR, L.L.C.								
P00216	A 5760.000000	LA 6862	CHANNEL ISLANDS CAPITAL, L.L.C.	95.82000	UNIT	<b>Bonus:</b>	\$	12,176,000.00
CAL373		LA 6812	DCOR, L.L.C.	4.18000	<b>Term:</b> 5	<b>Effective Date:</b>		04/01/1968
<b>Section:</b> 8		LA 6813			<b>Unit Name(s):</b>	<b>Expected Term :</b>		03/31/1973
Oil and Gas P4		LA 6863			SNTCLR	<b>Bid Type/Royal:</b>		16.666667
		NI11-04				<b>Discovery Date:</b>		03/04/1971
	02/06/1968							
<b>Designated Operator(s):</b>								
DCOR, L.L.C.								



UNITED STATES DEPARTMENT OF THE INTERIOR  
BUREAU OF OCEAN ENERGY MANAGEMENT  
PACIFIC OCS REGION

Lease Number(S): ACTIVE

## Serial Register Summary

From: P00180

To: P00461

Lease Tract	Acres Hectares	Area Block Map/OPD	Alq Current Record Title Interest	Percent Interest	Status			
P00300	A 5760.000000	LB 6487	BETA OPERATING COMPANY, LLC	100.00000	UNIT	<b>Bonus:</b>	\$	25,568,000.00
35-261		LB 6437			<b>Term:</b> 5	<b>Effective Date:</b>		02/01/1976
<b>Section:</b> 8		LB 6438			<b>Unit Name(s):</b>	<b>Expected Term :</b>		01/31/1981
Oil and Gas 035		LB 6488			BETA	<b>Bid Type/Royal:</b>		ROYRL
		NI11-07				<b>Discovery Date:</b>		06/02/1977
								12/11/1975
<b>Designated Operator(s):</b>								
BETA OPERATING COMPANY, LLC								
P00301	A 5760.000000	LB 6488	BETA OPERATING COMPANY, LLC	100.00000	UNIT	<b>Bonus:</b>	\$	45,685,000.00
35-262		LB 6438			<b>Term:</b> 5	<b>Effective Date:</b>		02/01/1976
<b>Section:</b> 8		LB 6439			<b>Unit Name(s):</b>	<b>Expected Term :</b>		01/31/1981
Oil and Gas 035		LB 6489			BETA	<b>Bid Type/Royal:</b>		ROYRL
		NI11-07				<b>Discovery Date:</b>		09/28/1976
								12/11/1975
<b>Designated Operator(s):</b>								
BETA OPERATING COMPANY, LLC								
P00306	A 5760.000000	LB 6538	BETA OPERATING COMPANY, LLC	100.00000	UNIT	<b>Bonus:</b>	\$	800,179.20
35-268		LB 6488			<b>Term:</b> 5	<b>Effective Date:</b>		02/01/1976
<b>Section:</b> 8		LB 6489			<b>Unit Name(s):</b>	<b>Expected Term :</b>		01/31/1981
Oil and Gas 035		LB 6539			BETA	<b>Bid Type/Royal:</b>		ROYRL
		NI11-07				<b>Discovery Date:</b>		
								12/11/1975
<b>Designated Operator(s):</b>								
BETA OPERATING COMPANY, LLC								

UNITED STATES DEPARTMENT OF THE INTERIOR  
BUREAU OF OCEAN ENERGY MANAGEMENT  
PACIFIC OCS REGION

Lease Number(s): ACTIVE

## Serial Register Summary

From: P00180

To: P00461

Lease Tract	Acres Hectares	Area Block Map/OPD	Alq Current Record Title Interest	Percent Interest	Status			
P00326	A 2880.000000	SM 6682	SABLE OFFSHORE CORP	100.00000	UNIT	<b>Bonus:</b>	\$	7,600,680.00
48-018		SM 6632			<b>Term:</b> 5	<b>Effective Date:</b>		09/01/1979
<b>Section:</b> 8G		SM 6633			<b>Unit Name(s):</b>	<b>Expected Term :</b>		08/31/1984
Oil and Gas 048		SM 6683			SANTA YNEZ	<b>Bid Type/Royal:</b>		16.666667
		NI10-06				<b>Discovery Date:</b>		04/01/1982

06/29/1979

**Designated Operator(s):**

SABLE OFFSHORE CORP

P00329	A 5760.000000	SM 6733	SABLE OFFSHORE CORP	100.00000	UNIT	<b>Bonus:</b>	\$	17,115,000.00
48-026		SM 6683			<b>Term:</b> 5	<b>Effective Date:</b>		09/01/1979
<b>Section:</b> 8		SM 6634			<b>Unit Name(s):</b>	<b>Expected Term :</b>		08/31/1984
Oil and Gas 048		SM 6684			SANTA YNEZ	<b>Bid Type/Royal:</b>		16.666667
		SM 6734				<b>Discovery Date:</b>		
		NI10-06						

06/29/1979

**Designated Operator(s):**

SABLE OFFSHORE CORP

P00437	A 5693.000000	SM 6322	FREEPORT MCMORAN OIL & GAS LLC	100.00000	UNIT	<b>Bonus:</b>	\$	7,140,000.00
53-222		SM 6272			<b>Term:</b> 5	<b>Effective Date:</b>		07/01/1981
<b>Section:</b> 8G		SM 6273			<b>Unit Name(s):</b>	<b>Expected Term :</b>		06/30/1986
Oil and Gas 053		SM 6323			PTPDNS	<b>Bid Type/Royal:</b>		ROYRL
		NI10-06				<b>Discovery Date:</b>		01/04/1985

05/28/1981

**Designated Operator(s):**

FREEPORT MCMORAN OIL &amp; GAS LLC

UNITED STATES DEPARTMENT OF THE INTERIOR  
BUREAU OF OCEAN ENERGY MANAGEMENT  
PACIFIC OCS REGION

Lease Number(s): ACTIVE

## Serial Register Summary

From: P00180

To: P00461

Lease Tract	Acres Hectares	Area Block Map/OPD	Alq Current Record Title Interest	Percent Interest	Status			
P00438	A 5693.000000	SM 6323	FREEPORT MCMORAN OIL & GAS LLC	100.00000	UNIT	<b>Bonus:</b>	\$	3,412,000.00
53-223		SM 6273			<b>Term:</b> 5	<b>Effective Date:</b>		07/01/1981
<b>Section:</b> 8G		SM 6274			<b>Unit Name(s):</b>	<b>Expected Term :</b>		06/30/1986
Oil and Gas 053		SM 6324			PTPDNS	<b>Bid Type/Royal:</b>		ROYRL
		NI10-06				<b>Discovery Date:</b>		
								05/28/1981
<b>Designated Operator(s):</b>								
FREEPORT MCMORAN OIL & GAS LLC								
P00440	A 5693.000000	SM 6372	FREEPORT MCMORAN OIL & GAS LLC	100.00000	UNIT	<b>Bonus:</b>	\$	37,358,000.00
53-228		SM 6322			<b>Term:</b> 5	<b>Effective Date:</b>		07/01/1981
<b>Section:</b> 8G		SM 6323			<b>Unit Name(s):</b>	<b>Expected Term :</b>		06/30/1986
Oil and Gas 053		SM 6373			PTPDNS	<b>Bid Type/Royal:</b>		ROYRL
		NI10-06				<b>Discovery Date:</b>		01/23/1984
								05/28/1981
<b>Designated Operator(s):</b>								
FREEPORT MCMORAN OIL & GAS LLC								
P00441	A 4905.000000	SM 6373	FREEPORT MCMORAN OIL & GAS LLC	100.00000	UNIT	<b>Bonus:</b>	\$	70,742,905.20
53-229		SM 6323			<b>Term:</b> 5	<b>Effective Date:</b>		07/01/1981
<b>Section:</b> 8G		SM 6324			<b>Unit Name(s):</b>	<b>Expected Term :</b>		06/30/1986
Oil and Gas 053		SM 6325			PTPDNS	<b>Bid Type/Royal:</b>		ROYRL
		SM 6375				<b>Discovery Date:</b>		01/11/1983
		SM 6374						
		NI10-06						
								05/28/1981
<b>Designated Operator(s):</b>								
FREEPORT MCMORAN OIL & GAS LLC								

UNITED STATES DEPARTMENT OF THE INTERIOR  
 BUREAU OF OCEAN ENERGY MANAGEMENT  
 PACIFIC OCS REGION

Lease Number(S): ACTIVE

*Serial Register Summary*

From: P00180

To: P00461

Lease Tract	Acres Hectares	Area Block Map/OPD	Alq Current Record Title Interest	Percent Interest	Status			
P00461	A 5760.000000	SM 6686	SABLE OFFSHORE CORP	100.00000	UNIT	<b>Bonus:</b>	\$	5,240,000.00
68-018		SM 6636			<b>Term:</b> 5	<b>Effective Date:</b>		08/01/1982
<b>Section:</b> 8G		SM 6637			<b>Unit Name(s):</b>	<b>Expected Term :</b>		07/31/1987
Oil and Gas 068		SM 6687			SANTA YNEZ	<b>Bid Type/Royal:</b>		12.500000
		NI10-06				<b>Discovery Date:</b>		

06/11/1982

**Designated Operator(s):**

SABLE OFFSHORE CORP

**TOTAL ACTIVE LEASES AND ACREAGE**

		<b>Number of Leases</b>	<b>Total Acreage (Acres)</b>
<b><u>SANTA BARBARA CHANNEL</u></b>			
LEASES #0180 - 0241	(Sale #P4 2/6/68)	19	93,153
LEASES #0326 - 0329	(Sale #48, 6/29/79)	2	8640
LEASES #0461 - 0461	(Sale #68, 6/11/82)	1	5760
<b><u>SOUTH OF SANTA BARBARA CHANNEL</u></b>			
LEASES #0296 - 0306	(Sale #35, 12/11/75)	4	23,040
<b><u>SANTA MARIA BASIN</u></b>			
LEASES #0437-0441	(Sale #53, 5/28/81)	4	21,985
<b>GRAND TOTAL</b>		<b>30</b>	<b>152,578</b>

## ACTIVE UNITS

Name as Shown in Serial Register Summary	Official Name of Unit	Unit Operator	No. of Leases in Unit *	Producing
BETA	Beta	Beta Offshore	4	Yes
PT HUENEME	Point Hueneme	DCOR	2	Yes
PTPDNS	Point Pedernales	FMOGLLC	* 4	Yes
SNTCLR	Santa Clara	DCOR	2	Yes
SANTA YNEZ	Santa Ynez	Sable Offshore Corp.	16	Yes



## LEASES WITH ACTIVELY PRODUCING WELLS

Lease	Unit	Operator	Platform(s)
OCS-P 0180	Santa Ynez	Sable	(from Hondo)
OCS-P 0181	Santa Ynez	Sable	(from Harmony)
OCS-P 0182	Santa Ynez	Sable	Heritage
OCS-P 0183	Santa Ynez	Sable	(from Heritage)
OCS-P 0187	Santa Ynez	Sable	
OCS-P 0188	Santa Ynez	Sable	Hondo
OCS-P 0190	Santa Ynez	Sable	Harmony (& from Hondo)
OCS-P 0191	Santa Ynez	Sable	(from Harmony)
OCS-P 0193	Santa Ynez	Sable	(from Heritage)
OCS-P 0194	Santa Ynez	Sable	Heritage
OCS-P 0195	Santa Ynez	Sable	Heritage
OCS-P 0202	Point Hueneme	DCOR	Gina
OCS-P 0203	Point Hueneme	DCOR	
OCS-P 0215	Santa Clara	DCOR	
OCS-P 0216	Santa Clara	DCOR	Gilda
OCS-P 0240	-----	DCOR	Henry, Hillhouse
OCS-P 0241	-----	DCOR	A, B, & C
OCS-P 0296	Beta	DCOR	Edith
OCS-P 0300	Beta	BETA	Ellen, Elly
OCS-P 0301	Beta	BETA	Eureka (& from Ellen)
OCS-P 0326	Santa Ynez	Sable	(from Heritage)
OCS-P 0329	Santa Ynez	Sable	(from Harmony)
OCS-P 0437	Point Pedernales	FMOGLLC	(from Irene)
OCS-P 0440	Point Pedernales	FMOGLLC	(from Irene)
OCS-P 0441	Point Pedernales	FMOGLLC	Irene

SUBTOTAL = 25 LEASES \*

\* The 25 leases listed above are producing from platforms on the leases or on adjacent

leases.

**LEASES IN PRODUCING UNITS WITHOUT  
ACTIVELY PRODUCING WELLS**

Lease	Unit	Operator
OCS-P 0189	Santa Ynez	Sable
OCS-P 0192	Santa Ynez	Sable
OCS-P 0461	Santa Ynez	Sable
OCS-P 0306	Beta	BETA
OCS-P 0438	Point Pedernales	FMOGLLC
SUBTOTAL = 5 LEASES		

**TOTAL = 30 DEVELOPED (PRODUCING) LEASES**

**NOTE: Total includes leases both with and without an allocation of production.**

## Calls for Information and Nomination through Final Notices of Sales

California		Call Dates	No. of Blocks in Call	No. of Acres in Call (In M)	No. of Companies Participated	No. of Blocks Nominated	No. of Acres Nominated (In M)	No. of Blocks in Area ID/EIS	No. of Acres in Area ID/EIS (In M)	No. of Blocks Offered	No. of Acres Offered
<b>PI – O&amp;G</b>	C&N CA	01/30/62-04/27/62	752	4.0	1	174	.9	<sup>3</sup>	<sup>3</sup>	129	669,777
		N/A	N/A	N/A	N/A	N/A	N/A	<sup>3</sup>	<sup>3</sup>	1	1,995
<b>P4 – O&amp;G</b>		12/29/66-03/01/67	144	.8	14	136	0.6	<sup>3</sup>	<sup>3</sup>	110	540,609
<b>Sale 35 – O&amp;G</b>		01/02/74-03/11/74	1,424	7.7	17	1,350	6.8	297	1.6	231	1,257,593
<b>Sale 48 – O&amp;G</b>		07/16/76-09/07/76	2,505	14.1	17	970	5.1	217	1.1	148	792,845
<b>Sale 53 – O&amp;G</b>		11/29/77-07/10/78	2,036	10.7	27	1,743	8.4	242	1.3	111	603,613
<b>Sale 68 – O&amp;G</b>		12/28/79-02/29/80	2,900	16.3	10	609	3.2	218	1.1	140	716,866
		N/A	N/A	N/A	N/A	N/A	N/A	N/A	N/A	27	153,716
<b>RS-2 – O&amp;G</b>											
<b>Sale 73 – O&amp;G</b>	CA	11/28/80-01/30/81	4,467	24.1	15	2,800	15.1	360	2.0	137	768,341
<b>Sale 80 – O&amp;G</b>	S CA	11/23/82-12/23/82	4,191	22.5	12	1,765	9.2	2,347	10.8	657	3,147,352
<b>SUBTOTAL – CALI FORNIA 10 Sales</b>		-----	18,419	100.2	-----	9,547	49.3	<sup>3</sup> 3,681	<sup>3</sup> 17.9	1,691	8,652,707
<b>OREGON/WASHINGTON</b>		08/14/63-	1,676	9.5	6	650	3.5	<sup>3</sup>	<sup>3</sup>	196	1,090,074
<b>P2 – O&amp;G</b>	OR & WA	11/01/63									
<b>GRAND TOTAL – ALL AREAS 11 Sales</b>		-----	20,095	109.7	-----	10,197	52.8	<sup>3</sup> 3,681	<sup>3</sup> 17.9	<sup>3</sup> 1,887	9,742,781

<sup>1</sup> Call handled by MMS Washington Office.

<sup>2</sup> Sale 53, Reoffering-2, and 73 occurred in the Central and Northern California Planning area that was in effect at the time of the Call. Under the Current 5-Year Program, these areas are part of the Southern California Planning Area.

<sup>3</sup> Sales occurred prior to National Environmental Policy Act (NEPA) of 1969; totals do not include these sales.

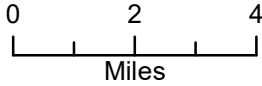
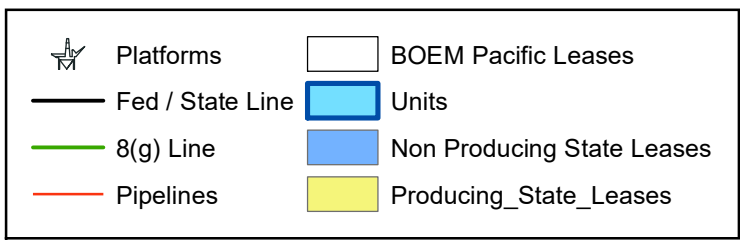
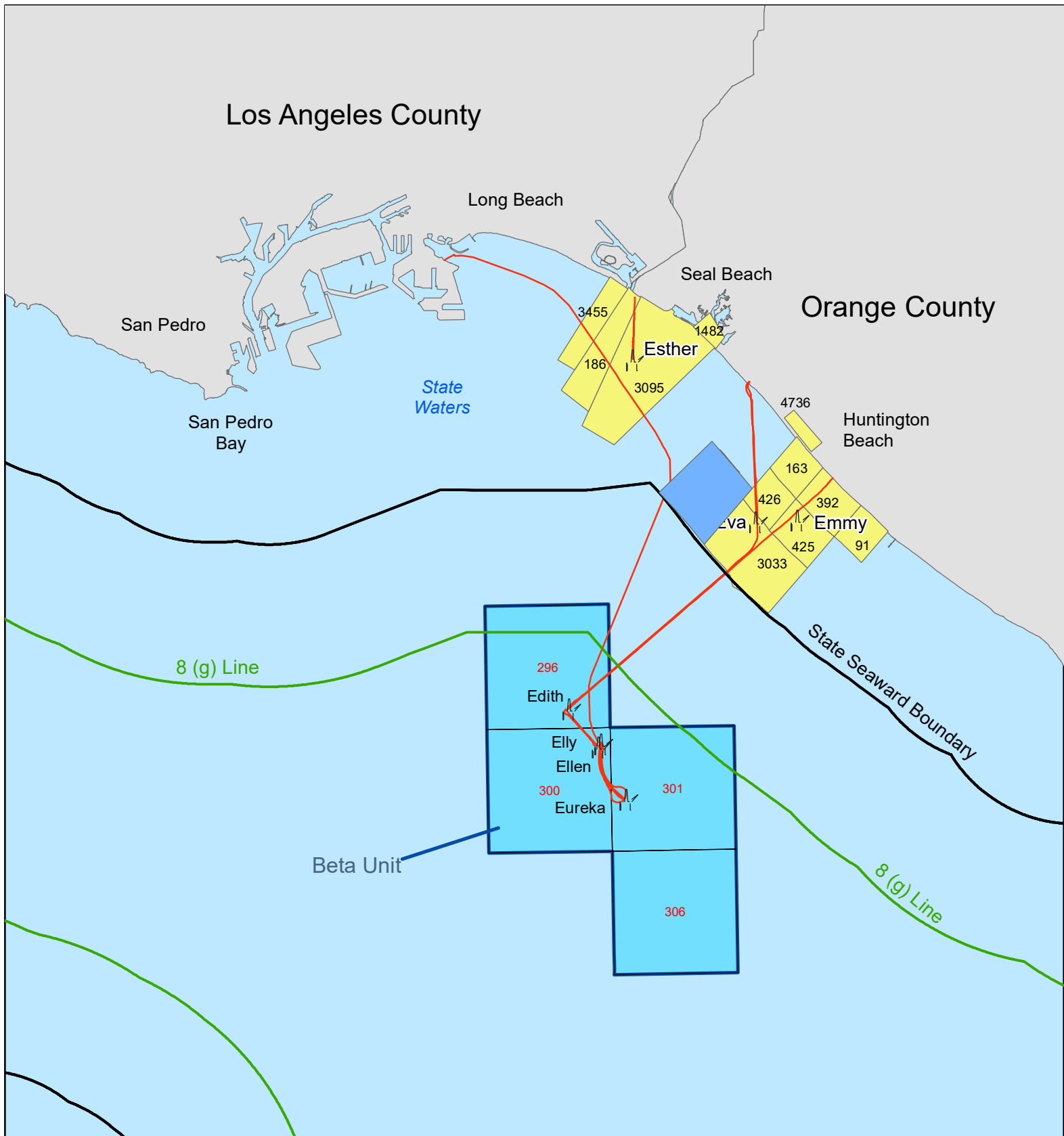
## SALE RESULTS AND ACTIVE LEASES

California	Sale Date	Sale Area	No. Bids Received	Total Bonus High Bids	Total Bonus Lease Blocks	Average Bid Per Acre	No. Blocks Bid On	No. Acres Bid On	No. Blocks Leased	No. Acres Leased	Active Leases	Total Acres Active Leases
Phosphate Lease Sale	12/15/61	S CA	6	\$122,000	\$122,000	\$4.03	6	30,240	6	30,240	0	0
P1 - O&G	05/14/63	C&N CA	70	\$12,807,587	\$12,807,337	\$40.93	58	321,975	57	312,945	0	0
P3 - Drainage	12/15/66	S CA	7	\$21,189,000	\$21,189,000	\$10,621.05	1	1,996	1	1,996	0	
P4 - O&G	02/06/68	S CA	164	\$603,204,284	\$602,719,262	\$1,659.56	75	383,341	71	363,181	19	93,153
Sale 35 - O&G	12/11/75	S CA	166	\$438,190,780	\$417,312,141	\$1,345.96	70	384,540	56	310,049	4	23,040
Sale 48 - O&G	06/29/79	S CA	112	\$573,956,402	\$572,825,418	\$1,987.18	55	294,018	54	288,260	2 <sup>1</sup>	8640
Sale 53 - O&G	05/28/81	C CA	301	\$2,277,856,761	\$2,088,881,824 <sup>2</sup>	\$6,387.82	81	432,815	60	320,579	4	21,985
Sale 68 - O&G	06/11/82	S CA	66	\$132,252,632	\$117,875,281	\$801.51	35	176,253	29	147,066	1	5760
RS-2 - O&G	08/05/82	C CA	19	\$5,103,578	\$4,369,472	\$76.75	12	68,318	10	56,932	0	0
Sale 73 - O&G	11/30/83	C CA	14	\$16,022,336	\$16,022,336	\$365.80	8	43,801	8	43,801	0	0
Sale 80 - O&G	10/17/84	S CA	30	\$66,231,426	\$62,121,252	\$543.17	25	125,100	23	114,367	0	0
Subtotal - California 11 Sales			955	\$4,146,936,786	\$3,916,245,323	\$1,977.90 <sup>3</sup>	426	2,253,396	375	1,989,415	30	
Oregon & Washington P2 - O&G	10/01/64	OR & WA	222	\$35,533,701	\$35,533,701	\$61.18	101	580,853	101	580,853 <sup>3</sup>	0	152,578
Grand Total - Pacific Region 12 Sales			1,177	\$4,182,470,487	\$3,951,779,024	\$1,539.58 <sup>4</sup>	527	2,834,249	476 <sup>1</sup>	2,570,268	30	152,578

<sup>1</sup> In addition to the leases issued by Lease Sales, two additional leases resulted from lease segregation. <sup>2</sup> This figure includes the 1/5 bonus deposits forfeited on 12 tracts for which no leases were issued. <sup>3</sup> In Sale P2 the total number of acres was 580,853; 425,433 off Oregon & 155,420 off Washington. <sup>4</sup> Oil and Gas Lease Sales only; does not include Phosphate Lease Sale.

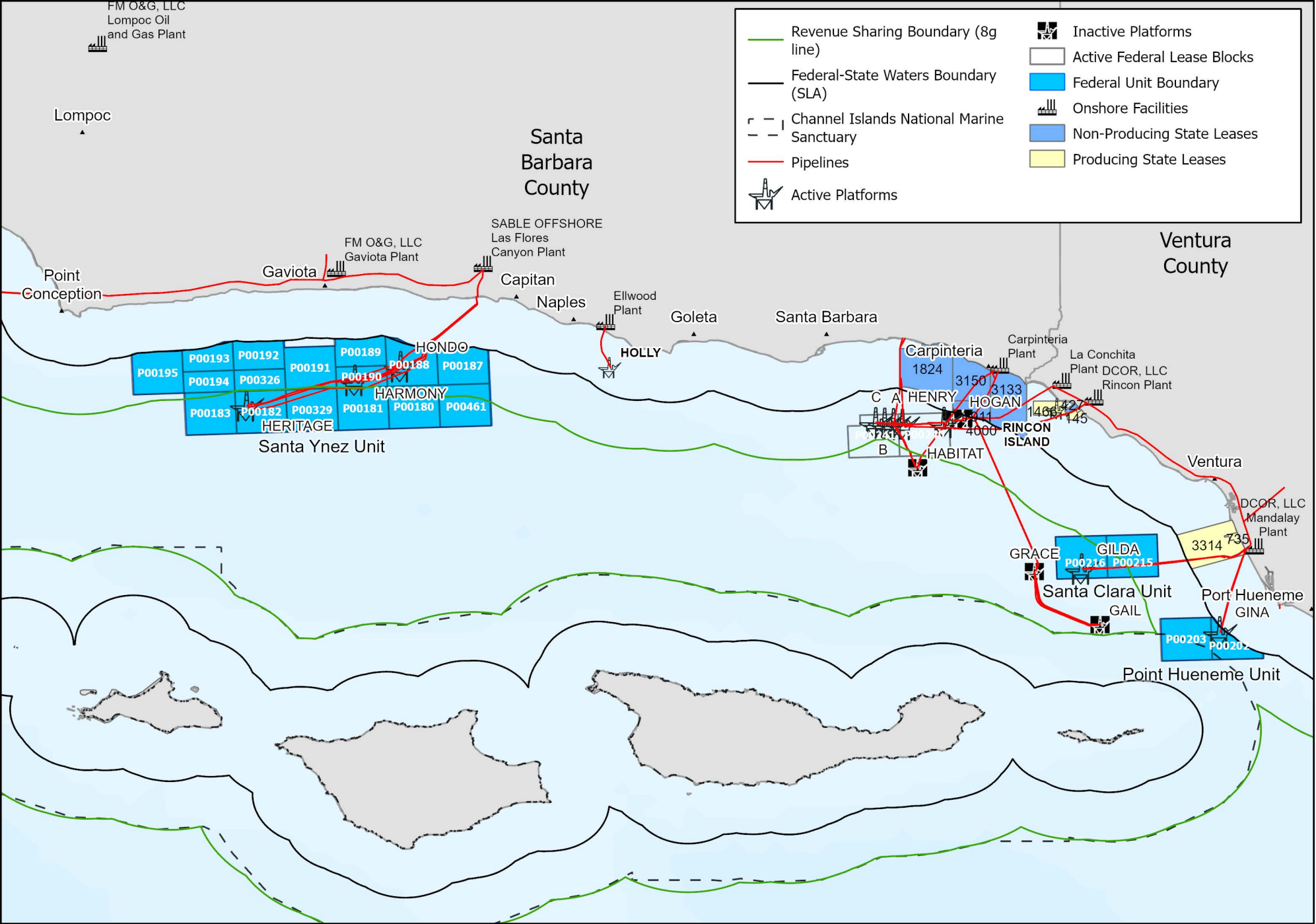
## Proposed Sales Cancelled

<i>California</i>	<b>Call Area</b>	<b>Call Dates</b>	<b>No. of Blocks in Call</b>	<b>No. of Acres in Call (In M)</b>	<b>No. of Companies Participated</b>	<b>No. of Blocks Nominated</b>	<b>No. of Acres Nominated (In M)</b>	<b>No. of Blocks in Area ID/EIS</b>	<b>No. of Acres in Area ID/EIS (In M)</b>	<b>No. of Blocks Offered</b>	<b>No. of Acres Offered</b>
<b>Sale 91</b>	N CA	02/13/86-05/14/86	229	1.2	15	229	1.2	223	1.1	N/A	N/A
<b>Sale 95</b>	S CA	07/09/87-08/24/87	1,373	7.0	13	1,373	7.0	1,317	6.7	N/A	N/A
<b>Supplemental Call/Sale 95</b>	S CA	11/17/88-12/19/88	17	0.078	13	17	0.078	N/A	N/A	N/A	N/A
<b>Sale 119</b>	C CA	11/16/88-02/02/89	338	1.7	14	338	1.7	N/A	N/A	N/A	N/A



# San Pedro Bay OCS Operations Map



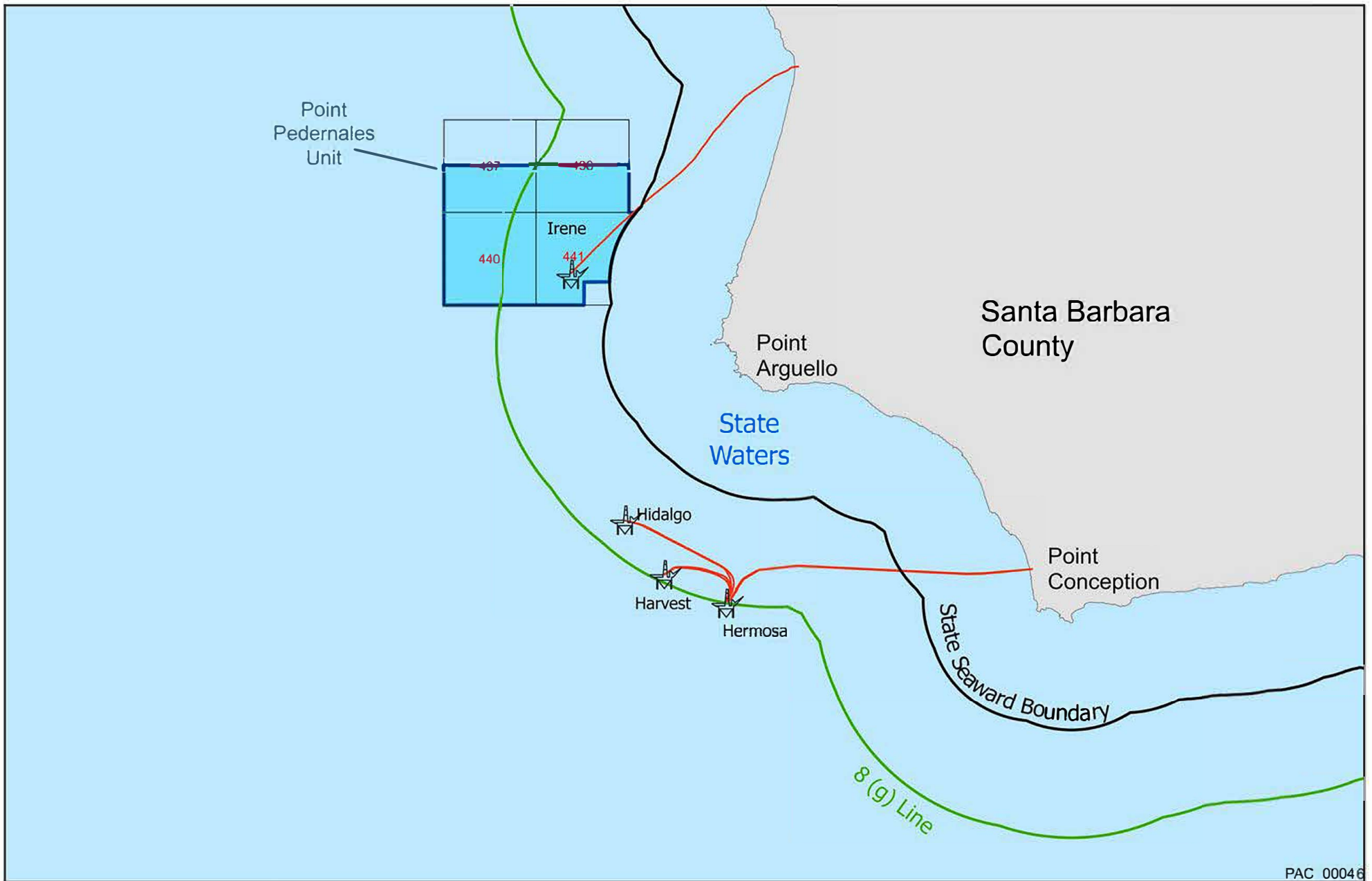


	Revenue Sharing Boundary (8g line)		Inactive Platforms
	Federal-State Waters Boundary (SLA)		Active Federal Lease Blocks
	Channel Islands National Marine Sanctuary		Federal Unit Boundary
	Pipelines		Onshore Facilities
	Active Platforms		Non-Producing State Leases
			Producing State Leases

### Santa Barbara Channel OCS Operations Map

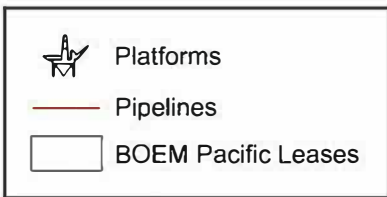
Bureau of Ocean Energy Management  
 U.S. Department of the Interior  
 Pacific Region  
 Date: 5/29/2024 PAC\_10087





PAC 00046

## Santa Maria Basin OCS Operations Map





**Names and Addresses of Qualified Companies in  
the Pacific Region**

<i>Name and Title</i>	<i>Company/Address/Telephone</i>	<i>Type Owner</i>	<i>Qualification Number</i>	<i>Lease Bond(s)</i>
<b>Christina Dixon</b> <i>Attorney-in-Fact</i> <a href="mailto:cmdixon@aeraenergy.com">cmdixon@aeraenergy.com</a>	Aera Energy LLC 10000 Ming Avenue Bakersfield, CA 93311-1164 (661) 665-5330		L.A. 01954	
<b>Jim Bryan</b> <i>Attorney-in-Fact</i> <a href="mailto:Jim.bryan@anadarko.com">Jim.bryan@anadarko.com</a>	Anadarko US Offshore LLC 1201 Lake Robbins Drive The Woodland, TX 77380 (832) 636-8831	L	L.A. 02219	
<b>Jim Bryan</b> <i>Director of Land</i> <a href="mailto:Jim.bryan@anadarko.com">Jim.bryan@anadarko.com</a>	Anadarko Petroleum Company 1201 Lake Robbins Drive Houston, TX 77251-1330 (832-636-8831)		L.A. 00981	
<b>David Rose</b> <i>Attorney-in-Fact</i> <a href="mailto:Drose@fmi.com">Drose@fmi.com</a>	Arguello Inc. Corporate Office 700 Milam, Suite 3100 Houston, TX 77002 (713) 579-6000	L	L.A. 02372	<b>\$3,000,000</b>
<b>David Rose</b> <i>Attorney-in-Fact</i> <a href="mailto:Drose@fmi.com">Drose@fmi.com</a>	Arguello Inc. Field Office 17100 Calle Mariposa Reina Goleta, CA 93117-9737 (805) 937-6377		L.A. 02372	
<b>Keith Wenal</b> <i>Secretary and Executive Vice President, Environment, Health, Safety and Regulatory</i> <a href="mailto:Keith.wenal@beacon-west.com">Keith.wenal@beacon-west.com</a>	Beacon West Energy Group, LLC 1072 Casitas Pass Rd. #221 Carpinteria, CA 93013 (805) 705-9307		L.A. 03539	
<b>Martyn Willsher</b> <i>Chief, Financial Officer</i> <a href="mailto:Martyn.Willsher@amplifyenergy.com">Martyn.Willsher@amplifyenergy.com</a>	Beta Operating Company, LLC 500 Dallas Street, 1800 Houston, TX 77002 (562) 628-1539	L, O, P	L.A. 03126	<b>\$3,000,000</b>
<b>Shane P. Reeves</b> <i>Director</i> <a href="mailto:Shane@blackravenresources.com">Shane@blackravenresources.com</a>	Black Raven Resources LLC 1616 S. Voss Street #875 Houston, TX 77057 (832) 510-8950		L.A. 03506	
<b>Charles W. Cappel</b> <i>President</i> <a href="mailto:cwcappel1@gmail.com">cwcappel1@gmail.com</a>	Carone Petroleum Corporation 1145 Eugenia Place Carpinteria, CA 93013 (805) 899-3144		L.A. 03018	

<b>W.M. Templeton</b> <i>Manager</i> <a href="mailto:wmtempleton@dcorllc.com">wmtempleton@dcorllc.com</a>	Channel Islands Capital, LLC 10455 Strait Lane Dallas, Texas 75229 (469) 621-8040	L	L.A. 03284	<b>\$300,000</b>
<b>J. Keith Couvillion</b> <i>Assistant Secretary</i> <a href="mailto:Keithcouvillion@chevron.com">Keithcouvillion@chevron.com</a>	Chevron U.S.A Inc. 1500 Louisiana Street Houston, TX 77002 (832) 854-3653	P	L.A. 00078	
<b>James Carlton</b> <i>Land Manager</i> <a href="mailto:Jim.carlton@conocophillips.com">Jim.carlton@conocophillips.com</a>	ConocoPhillips P.O. Box 2197 Houston, TX 77252-2197 832-486-2669		L.A. 00056	
<b>John Richels</b> <i>President, CEO</i> <a href="mailto:jrichels@devon.com">jrichels@devon.com</a>	Devon Energy Production Company, L.P. 333 West Sheridan Avenue Oklahoma City, OK 73102 (405) 228-4800		L.A. 02410	
<b>John Richels</b> <i>President, CEO</i> <a href="mailto:jrichels@devon.com">jrichels@devon.com</a>	Devon Energy Production Company, L.P. 333 West Sheridan Avenue Oklahoma City, OK 73102 (405) 228-4800	L	L.A. 02421	
<b>Alan Templeton</b> <i>President</i> <a href="mailto:atempleton@dcorllc.com">atempleton@dcorllc.com</a>	DCOR, L.L.C. Operations Office 1000 Town Center Drive Suite 600 Oxnard, CA 93036 (805) 535-2000	L, O, P	L.A. 02531	<b>\$3,000,000</b>
<b>Alan Templeton</b> <i>President</i> <a href="mailto:atempleton@dcorllc.com">atempleton@dcorllc.com</a>	DCOR, L.L.C. Headquarters Office 8401 North Central Express, Suite 525 Dallas, TX 75225 (469) 621-8100		L.A. 02531	
<b>S.M. Greenlee</b> <i>Vice President</i> <a href="http://www.exxonmobil.com">www.exxonmobil.com</a>	Exxon Mobil Corporation 12000 Calle Real Goleta, CA 93117 (805) 961-4066	L, O	L.A. 00276	<b>\$3,000,000</b>
<b>S.M. Greenlee</b> <i>President</i> <a href="http://www.exxonmobil.com">www.exxonmobil.com</a>	Exxon Mobil Oil Corporation, Prod/CTG/PTA Post Office Box 2024 Houston, TX 77252-2024 (281) 654-6236		L.A. 00039	
<b>David Rose</b> <i>Attorney-in-Fact</i> <a href="mailto:drose@fmi.com">drose@fmi.com</a>	Freeport-McMoRan Oil & Gas LLC 700 Milam, Suite 3100 Houston, TX 77002	L, O, P	L.A. 03280	<b>\$3,000,000</b>

	(713) 579-6377			
<b>M. Brad Robinson</b> <i>CEO/President</i> <a href="mailto:brobinson@oxbow.com">brobinson@oxbow.com</a>	Harvest Energy Inc. c/o Oxbow 1601 Forum Place West Palm, FL 33401 (561) 697-4300	L		
<b>Valarie Fusie</b> <a href="mailto:Valarie.Fusie@kochind.com">Valarie.Fusie@kochind.com</a>	Koch Industries, LLC 950 17 <sup>th</sup> Street, Suite 1900 Denver, CO 80202 (303) 325-2581		L.A. 00722	
<b>Valarie Fusie</b> <a href="mailto:Valarie.Fusie@kochind.com">Valarie.Fusie@kochind.com</a>	Koch Industries, Inc. 950 17 <sup>th</sup> Street, Suite 1900 Denver, CO 80202 (303) 325-2581	L	L.A. 00295	
<b>Myron Neugeboren</b> <i>Program Management</i> <a href="mailto:m.neugeboren@Minoco.com">m.neugeboren@Minoco.com</a>	Minoco 1980-IPLC Oil & Gas Program P.O. Box 1410 Lakeville, CT 06039 (860) 435-2603		L.A. 00732	
<b>Myron Neugeboren</b> <i>Program Management</i> <a href="mailto:m.neugeboren@Minoco.com">m.neugeboren@Minoco.com</a>	Minoco UAQ, Ltd. P.O. Box 1410 Lakeville, CT 06039 (860) 435-2603	L	L.A. 00733	
<b>M.W. Massey</b> <i>Director</i>	Mobil California Exploration & Producing Asset Company 233 Benmar Rm. 1210 Houston, TX 77060 (281) 654-5077		L.A. 02215	
<b>T.R. Walters</b> <i>Vice President</i> <a href="http://www.exxonmobil.com">www.exxonmobil.com</a>	Mobil Exploration & Producing North America U.S. Inc. Prod/CTG/PTA Post Office Box 2024 Houston, TX 77252-2024 (713) 680-5275		L.A. 01055	
<b>R. Scott Nance</b> <i>Operations Landman</i> <a href="mailto:snance@nobleenergyinc.com">snance@nobleenergyinc.com</a>	Noble Energy, Inc. 100 Glenborough, Suite 100 Houston, TX 77067 (281) 876-6145		L.A. 02237	<b>\$1,000,000.00</b>
<b>David Rose</b> <i>Attorney-in-Fact</i> <a href="mailto:drose@fmi.com">drose@fmi.com</a>	Pacific Interstate Offshore Company 700 Milam, #3100 Houston, TX 77002 (713) 579-6226	P	L.A. 01717	

<b>Brian Smith</b> <b>HSE Supervisor</b> <a href="mailto:bsmith@sableoffshore.com">bsmith@sableoffshore.com</a>	Pacific Offshore Pipeline Company 12100 Calle Real Goleta, CA 93117 (805) 968-7015 x248	P	L.A. 00549
<b>Robert Carone</b> <b>President/Chief Financial Officer</b> <a href="mailto:rcarone@pacops.com">rcarone@pacops.com</a>	Pacific Operators Offshore LLC P.O. Box 5565 Oxnard, CA 93031 (805) 899-3144		L.A. 01560
<b>Christine Thorp</b> <b>Director</b> <a href="mailto:cthorp@petrol.com">cthorp@petrol.com</a>	Par Petroleum Holdings Inc. One Memorial 800 Gessner Road Houston, TX 77024 (281)899-4800		L.A. 01753
<b>David Rose</b> <b>Attorney-in-Fact</b> <a href="mailto:drose@fmi.com">drose@fmi.com</a>	Point Arguello Natural Gas Line Company 17100 Calle Mariposa Reina Goleta, CA 93117 (805) 937-6377	P	L.A. 01020
<b>David Rose</b> <b>Attorney-in-Fact</b> <a href="mailto:drose@fmi.com">drose@fmi.com</a>	Point Arguello Natural Gas Line Company 17100 Calle Mariposa Reina Goleta, CA 93117 (805) 937-6377	P	L.A. 01019
<b>Ryan Templeton</b> <b>Manager</b> <a href="mailto:RTempleton@dcorllc.com">RTempleton@dcorllc.com</a>	Rincon Offshore Investment, LLC 107 Blackwater Street Santa Rosa Beach, Florida 32459 (469)621-8000		L.A. 03544
<b>Carolyn Bertrand</b> <b>Deputy General Counsel</b> <a href="mailto:cbertrand@sableoffshore.com">cbertrand@sableoffshore.com</a>	Sable Offshore Corp. 845 Texas Ave. Suite2920 Houston, Texas 77002	L, O	L.A. 03726
<b>Charlie Cappel</b> <b>President/Chief Financial Officer</b> <a href="mailto:cwcappel1@gmail.com">cwcappel1@gmail.com</a>	Signal Hill Service, Inc. P.O. Box 5565 Oxnard, CA 93031 (805) 899-3144		L.A.1559
<b>W.E. Koshak</b> <b>Attorney-in-Fact</b> <a href="mailto:skip.koshak@shell.com">skip.koshak@shell.com</a>	SWEPI LP P.O. Box 576 Houston, TX 77001		
<b>Darren Katic</b> <b>President</b> <a href="mailto:dkatic@hawkerenergyllc.com">dkatic@hawkerenergyllc.com</a>	West Energy Offshore Ltd 326 South Pacific Coast Highway, Suite 102 Redondo Beach, CA 90277		L.A. 03500

<b>David Seery</b> <b>Vice President, Lands</b> <a href="mailto:DaveS@whiting.com">DaveS@whiting.com</a>	Whiting Oil and Gas Corporation 1700 Broadway, #2300 Denver, CO 80390-2301 (303) 837-1661	L	L.A. 1421
--	--	---	-----------

**L - INTEREST IN LEASE (S)    O - OPERATOR    P - INTEREST IN PIPELINE (S)**