

**April 2, 2019**

**Bureau of Ocean Energy Management – Pacific Region**

Commercial Leasing for Wind Power on the Outer Continental Shelf (OCS) Offshore California—Call for Information and Nominations Docket No. BOEM-2018-0045.

In response to the Bureau of Ocean Energy Management (BOEM) *Commercial Leasing for Wind Power on the Outer Continental Shelf (OCS) Offshore California – Call for Information and Nominations (Call)* [Docket No. BOEM-2018-0045], published October 19, 2018, BOEM received fourteen indications of interest to obtain a commercial lease for a wind energy project. The parties who submitted an indication of interest include:

- Algonquin Power Fund (America), Inc.
- wpd Offshore Alpha, LLC
- Avangrid Renewables, LLC
- Castle Wind, LLC
- Cierco Corporation
- EDF Renewables Development, Inc.
- EDP Renewables North America, LLC
- E C & R (eON) Development, LLC
- Equinor Wind US, LLC
- Mission Floating Wind, LLC
- Northcoast Floating Wind, LLC
- Northland Power America, Inc,
- Redwood Coast Energy Authority (RCEA)
- US Mainstream Renewable Power, Inc.

BOEM reviewed these parties' submissions to assess filing completeness and has determined the parties are legally, technically, and financially qualified to hold an OCS renewable energy commercial lease. The following maps depict the areas of commercial interest nominated by each party.

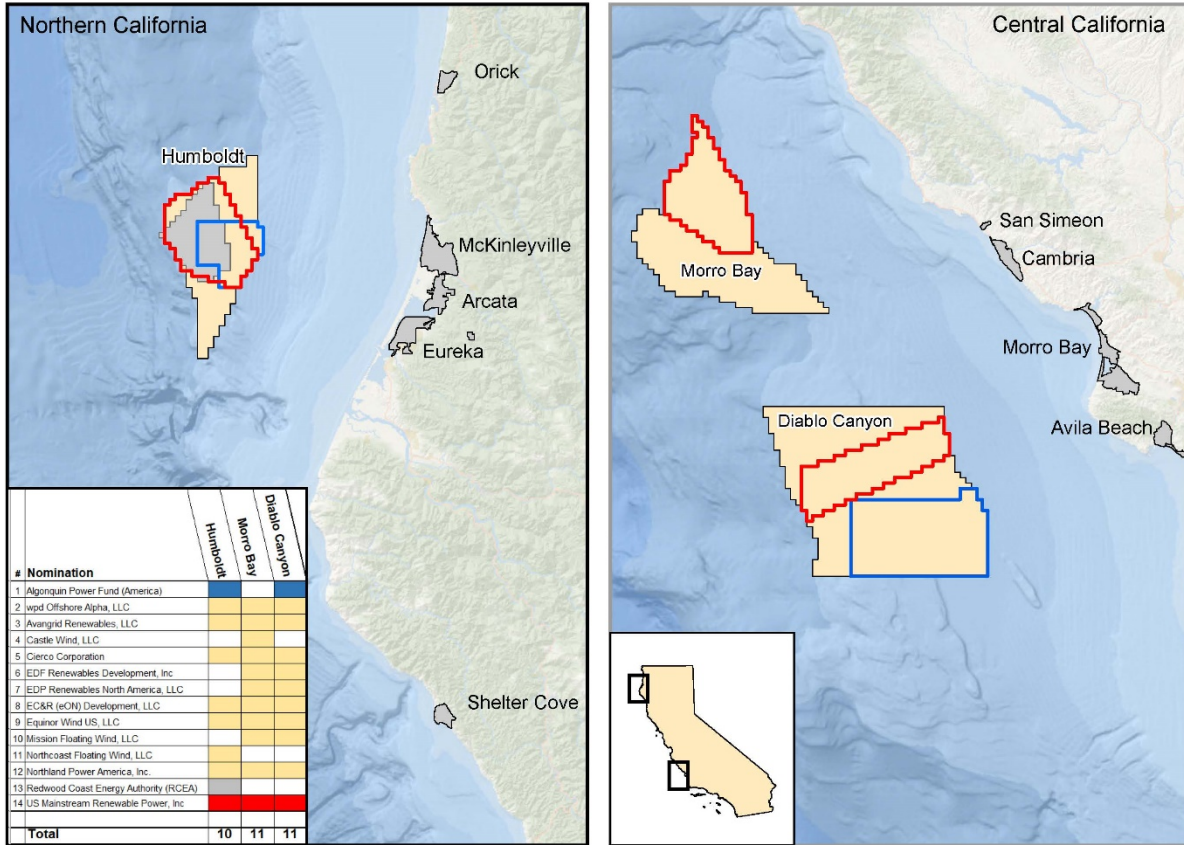
Please note that no decision has been made to offer lease(s) for any indication of interest listing in the maps below.

# Summary of Nominations – California Call:



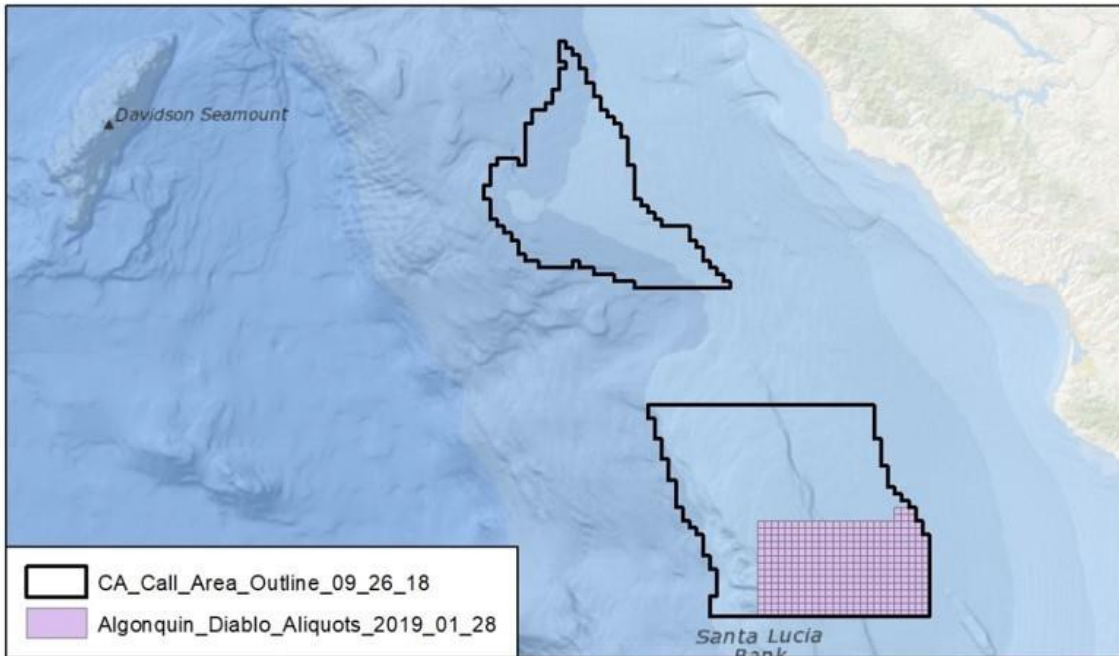
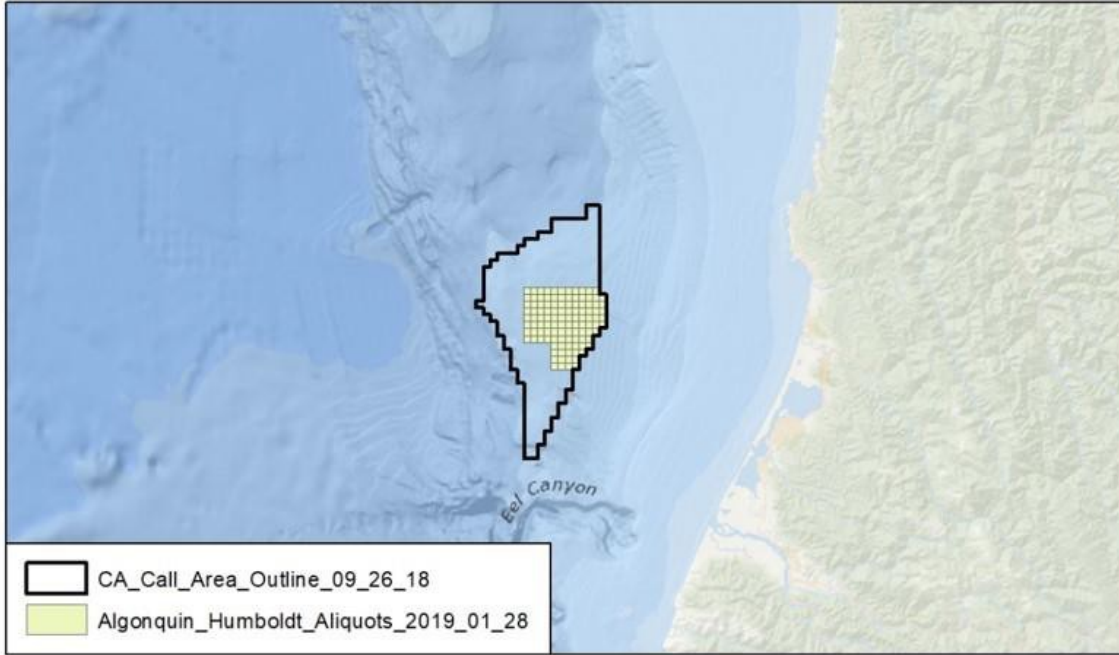
Bureau of Ocean Energy Management  
Pacific Outer Continental Shelf Region

## CA Call Area (Nominations)



*Note: California Call Areas are designated in yellow. The parties and the OCS blocks nominated for development are provided above.*

# Algonquin Power Fund (America), Inc.

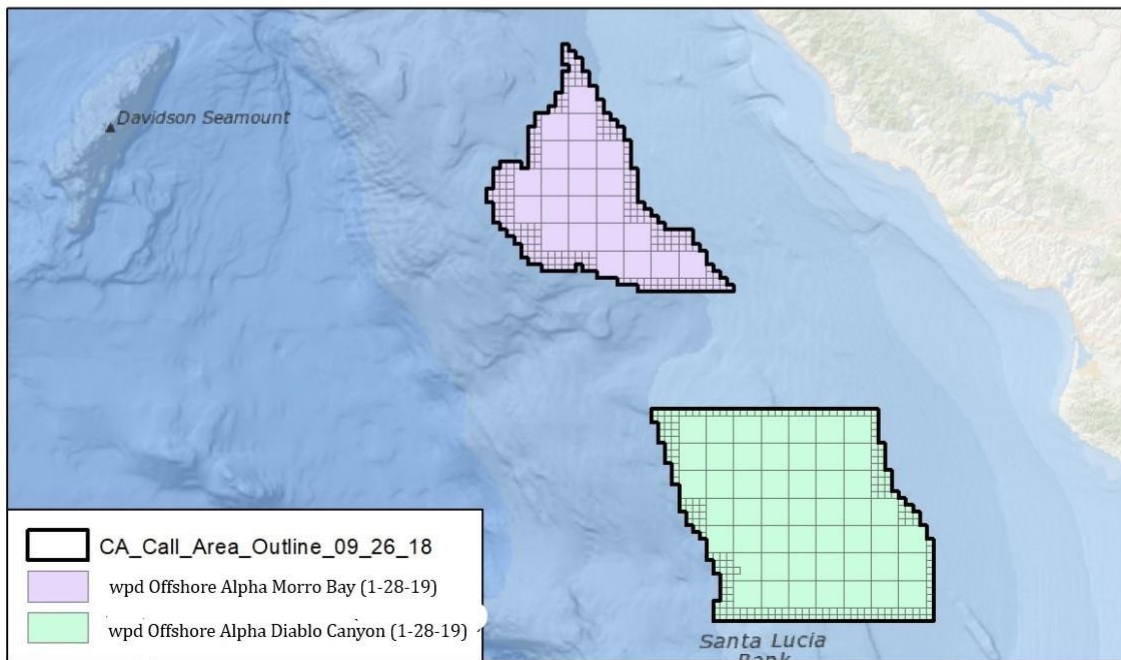
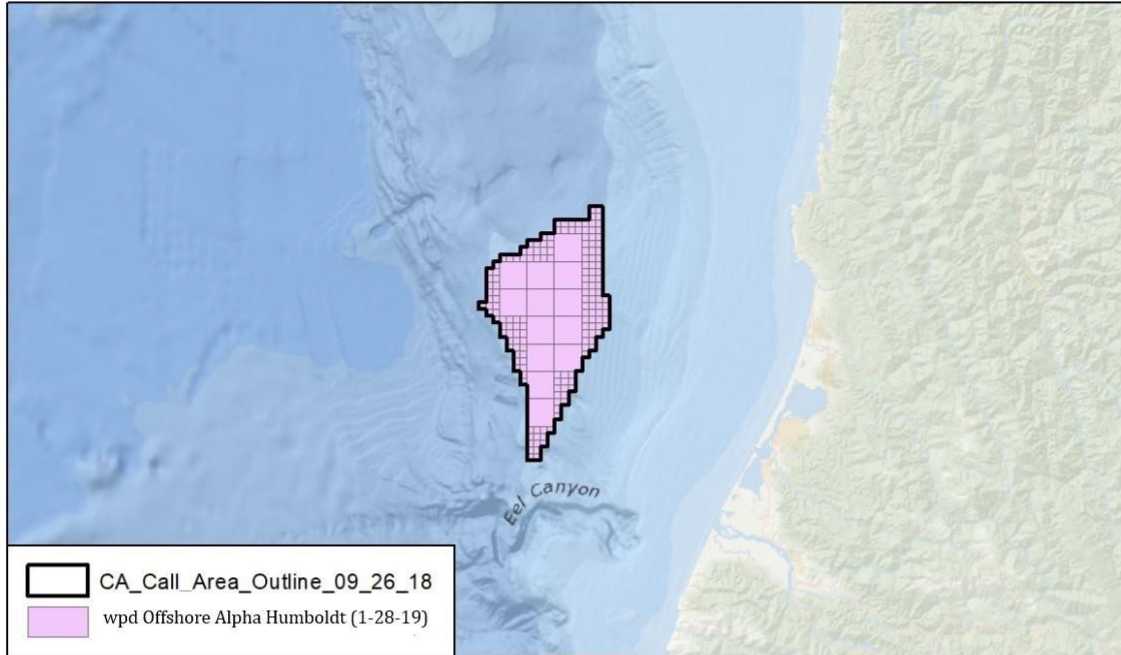


<b>Algonquin Power Fund (America), Inc. Call Area Nominations</b>			
<b>Humboldt Call Area</b>			
<b>Protraction Name</b>	<b>Protraction No.</b>	<b>Block No.</b>	<b>Sub-block</b>
Humboldt	Nk10-07	7126	A,B,C,D,E,F,G,H,I,J,K,L,M,N,O,P
Humboldt	Nk10-07	6027	A,B,C,D,E,F,G,H,I,J,K,M,N
Humboldt	Nk10-07	6077	A,B,E
Humboldt	Nk10-07	7124	ALL
Humboldt	Nk10-07	7025	ALL
Humboldt	Nk10-07	6025	ALL
Humboldt	Nk10-07	6026	ALL
Humboldt	Nk10-07	6076	ALL
<b>Diablo Canyon Call Area</b>			
<b>Protraction Name</b>	<b>Protraction No.</b>	<b>Block No.</b>	<b>Sub-block</b>
Diablo Canyon	NI109-03	6965	I,J,K,M,N,O
Diablo Canyon	NI109-03	7016	I,M
Diablo Canyon	NI109-03	7066	A,E,I,M
Diablo Canyon	NI109-03	7116	A,E,I,M
Diablo Canyon	NI10-06	6010	A,B,C,D,E,F,G,H
Diablo Canyon	NI10-06	6011	A,B,C,D,F,G,H
Diablo Canyon	NI10-06	6012	A,B,C,D,E,F,G,H
Diablo Canyon	NI10-06	6013	A,B,C,D,E,F,G,H
Diablo Canyon	NI10-06	6014	A,B,C,D,E,F,G,H
Diablo Canyon	NI10-06	6015	A,B,C,D,E,F,G,H
Diablo Canyon	NI10-06	6016	A,E
Diablo Canyon	NI10-03	7011	ALL
Diablo Canyon	NI10-03	7012	ALL
Diablo Canyon	NI10-03	7013	ALL
Diablo Canyon	NI10-03	7014	ALL
Diablo Canyon	NI10-03	7015	ALL
Diablo Canyon	NI10-03	7060	ALL
Diablo Canyon	NI10-03	7061	ALL
Diablo Canyon	NI10-03	7062	ALL
Diablo Canyon	NI10-03	7063	ALL
Diablo Canyon	NI10-03	7064	ALL
Diablo Canyon	NI10-03	7065	ALL
Diablo Canyon	NI10-03	7110	ALL
Diablo Canyon	NI10-03	7111	ALL
Diablo Canyon	NI10-03	7112	ALL
Diablo Canyon	NI10-03	7113	ALL
Diablo Canyon	NI10-03	7114	ALL
Diablo Canyon	NI10-03	7115	ALL

# wpd Offshore Alpha, LLC

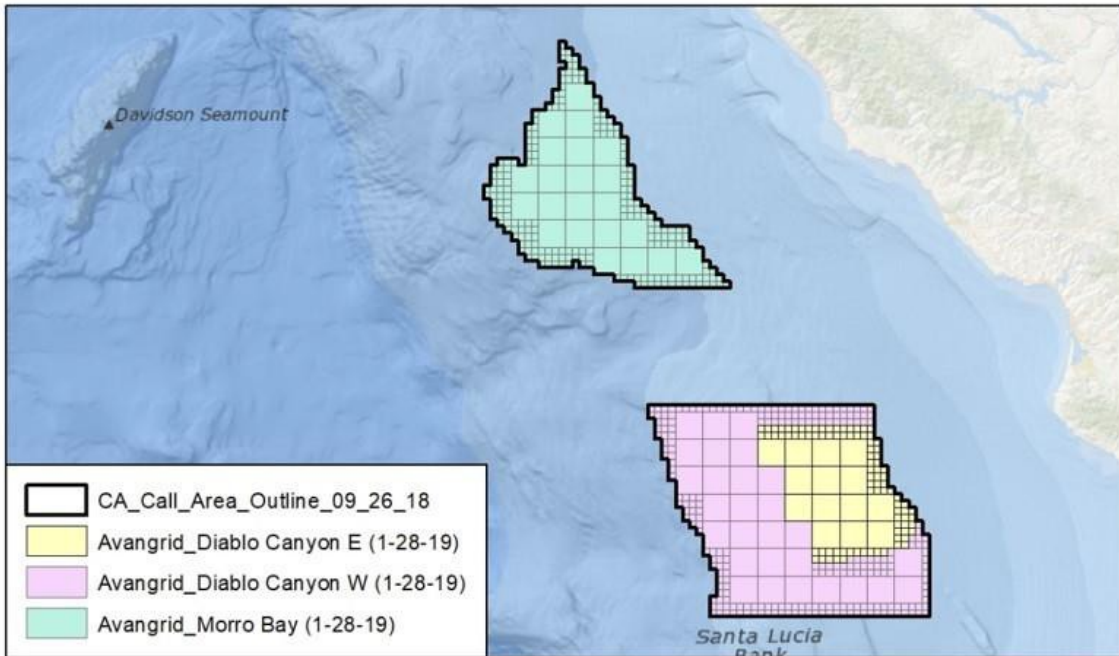
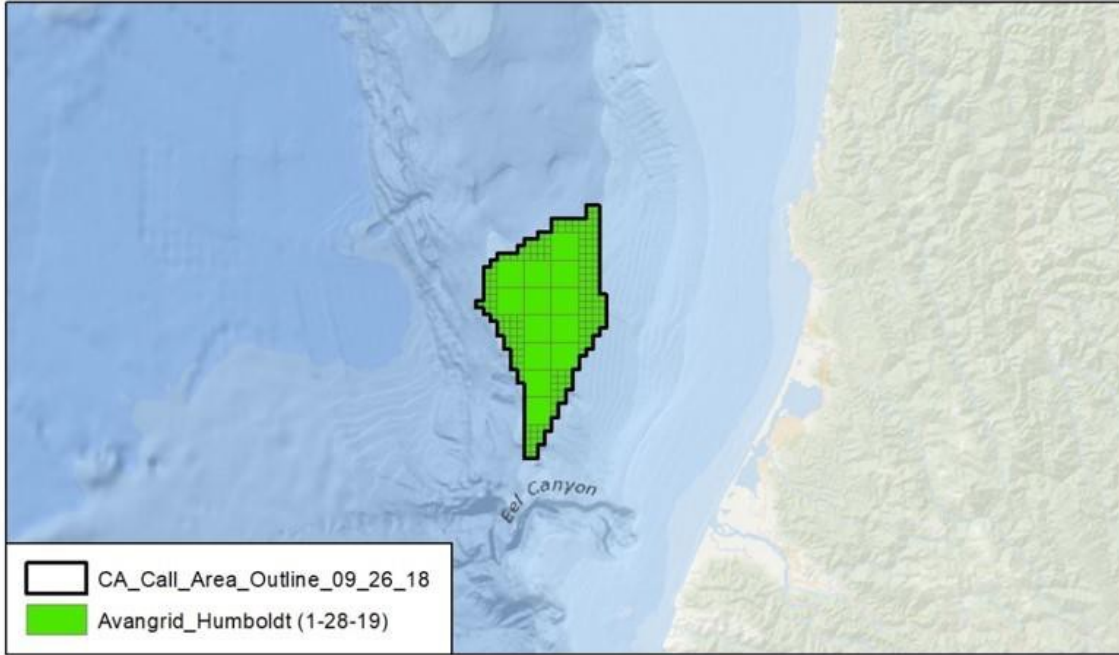


Bureau of Ocean Energy Management  
Pacific Outer Continental Shelf (OCS) Region



H:\GIS\Data\California\CA\_Call\_Interest\CA\_Call\_Interest (1-28-19).mxd

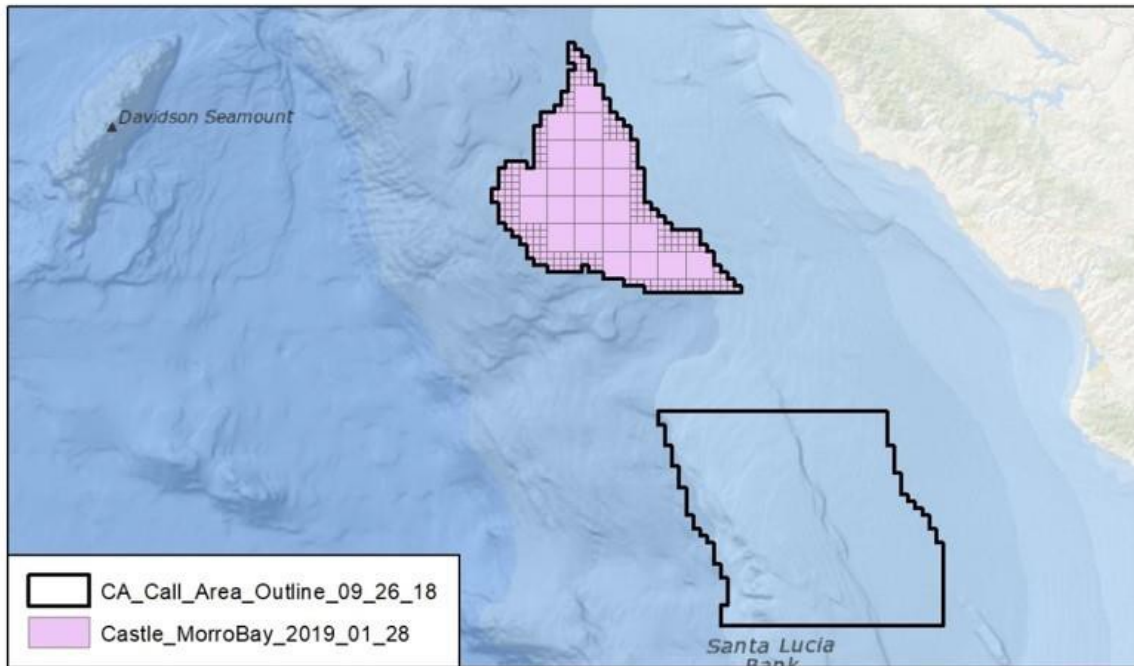
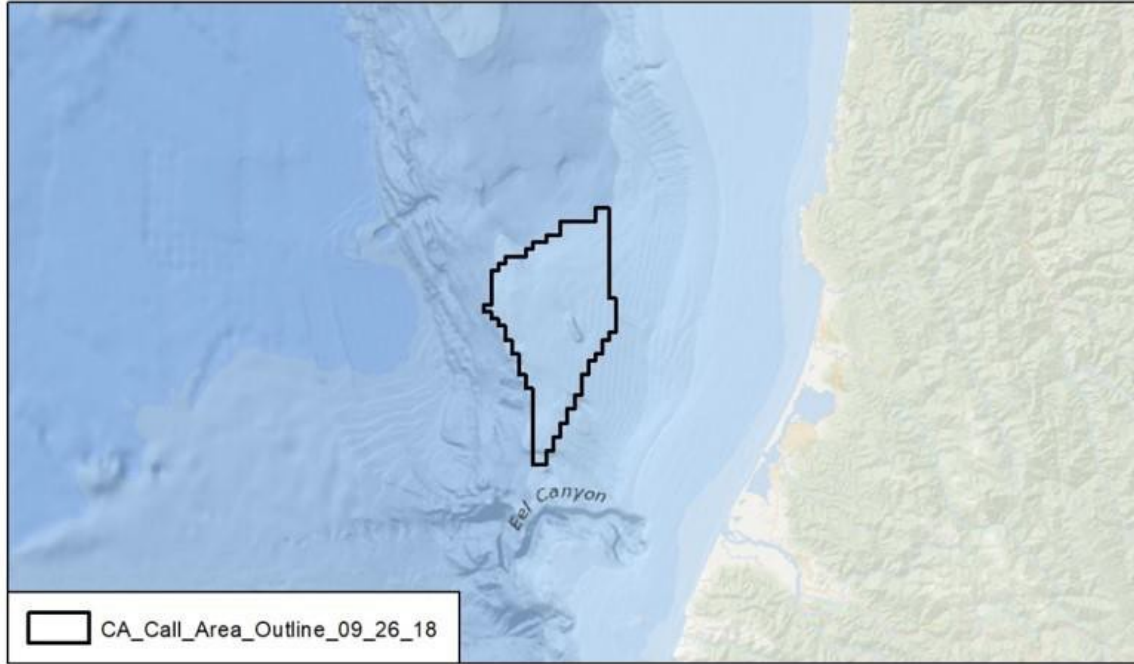
# Avangrid Renewables, LLC



Castle Wind, LLC



Bureau of Ocean Energy Management  
Pacific Outer Continental Shelf (OCS) Region

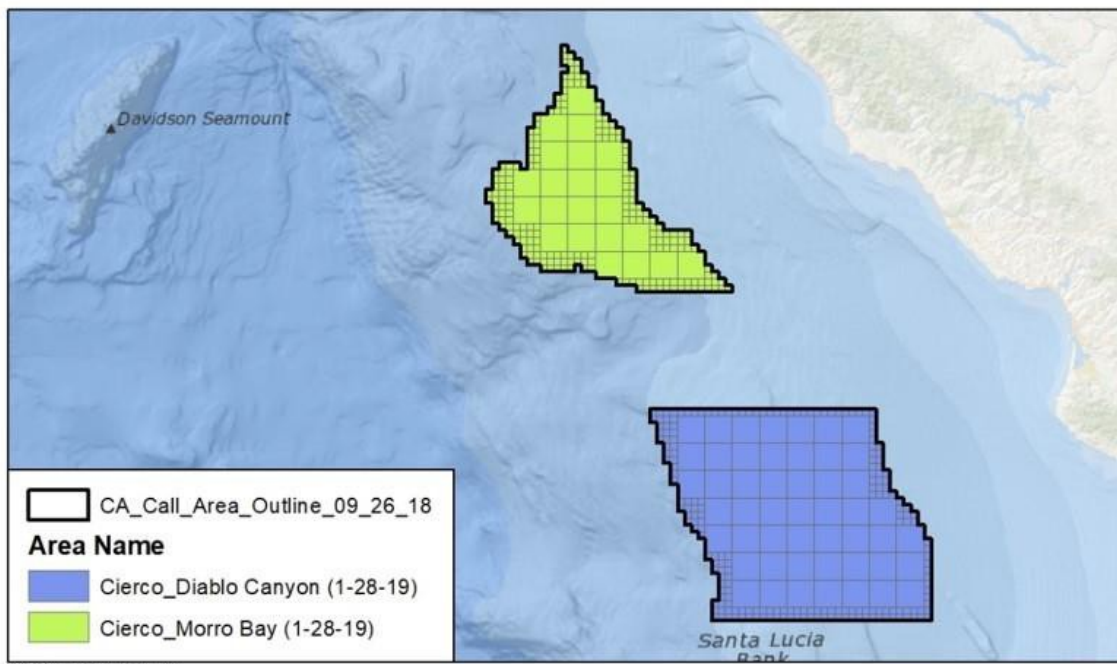
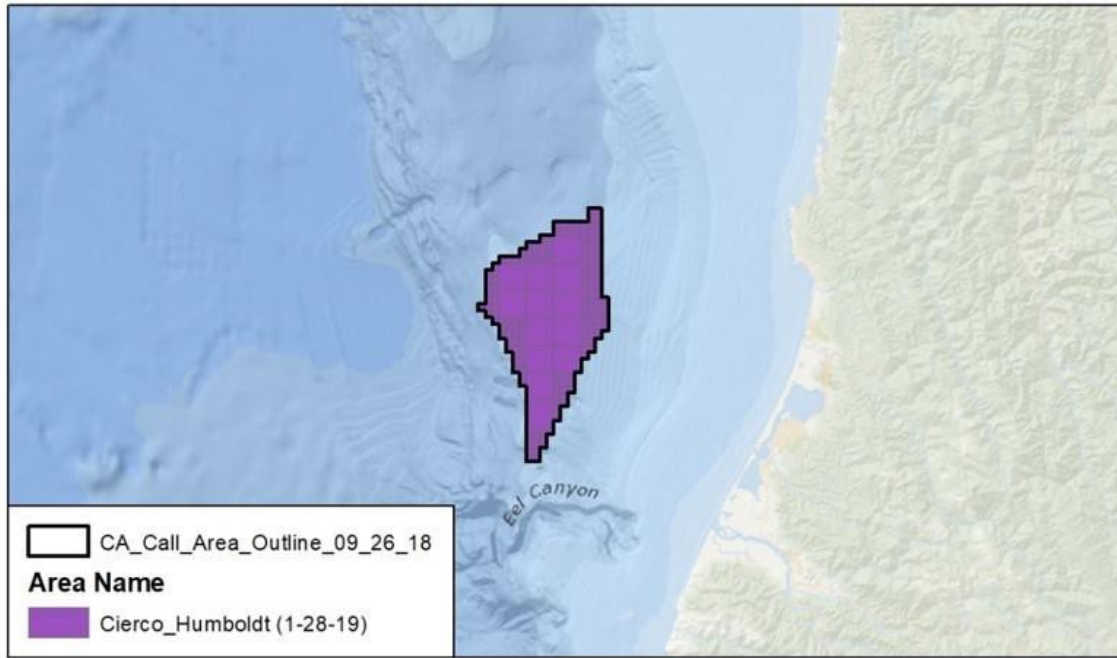


H:\GIS\Data\California\CA\_Call\_Interest\CA\_Call\_Interest (1-28-19).mxd

# Cierco Corporation



Bureau of Ocean Energy Management  
Pacific Outer Continental Shelf (OCS) Region



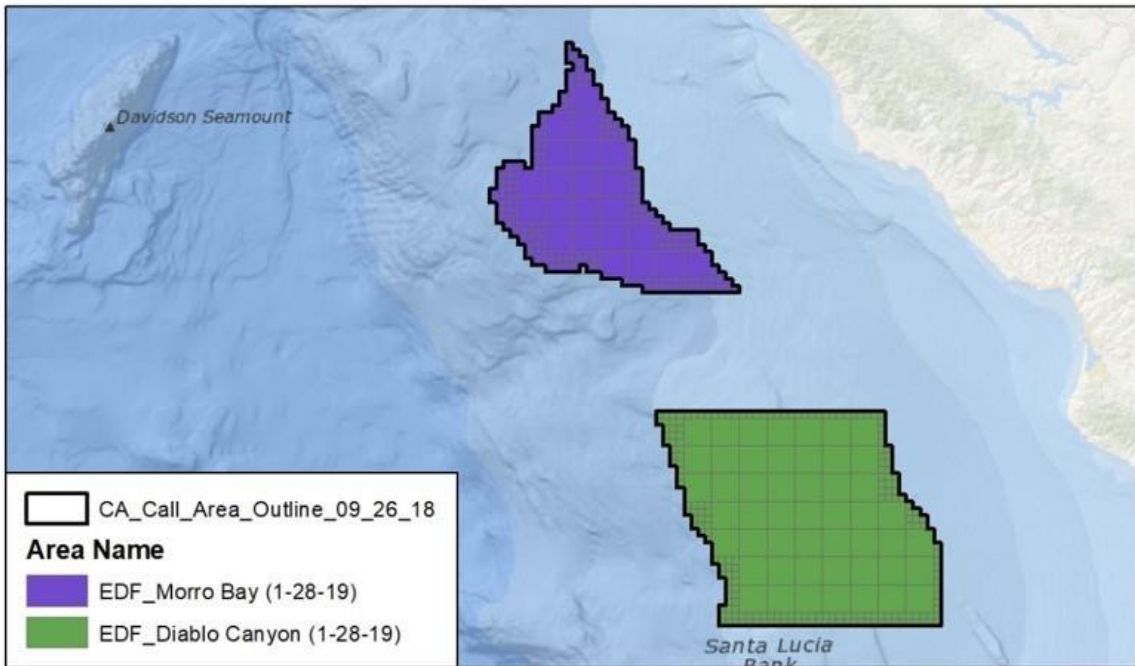
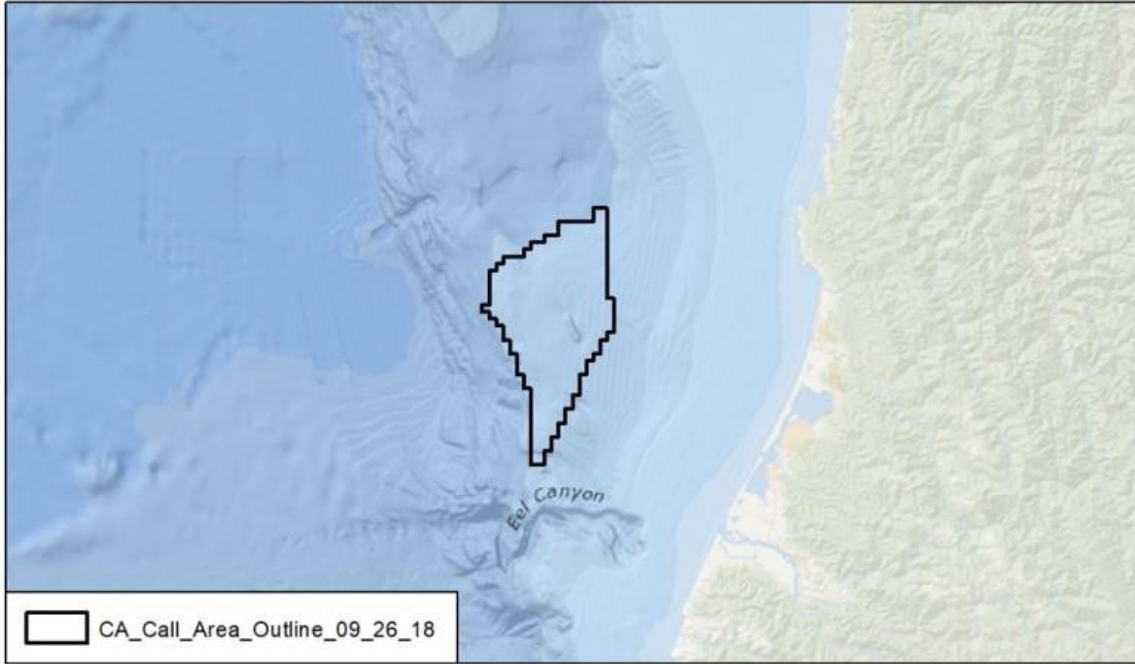
CA\_Call\_Interest (1-28-19)



EDF Renewables Development, Inc.



Bureau of Ocean Energy Management  
Pacific Outer Continental Shelf (OCS) Region

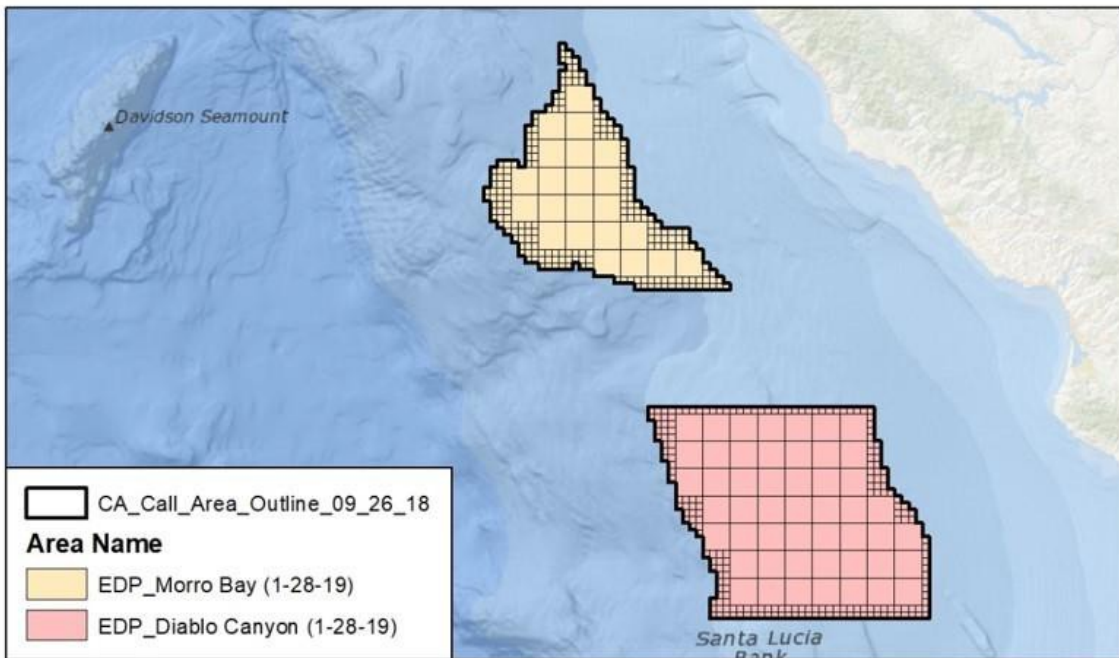
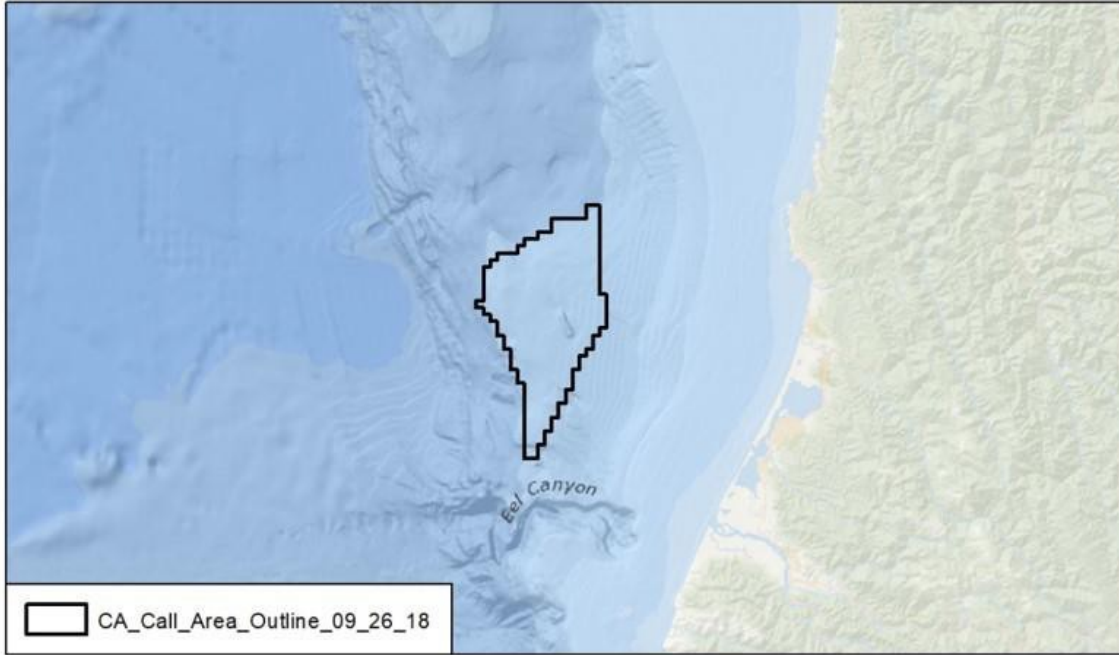


CA\_Call\_Interest (1-28-19)

# EDP Renewables (EDPR) North America, LLC



Bureau of Ocean Energy Management  
Pacific Outer Continental Shelf (OCS) Region

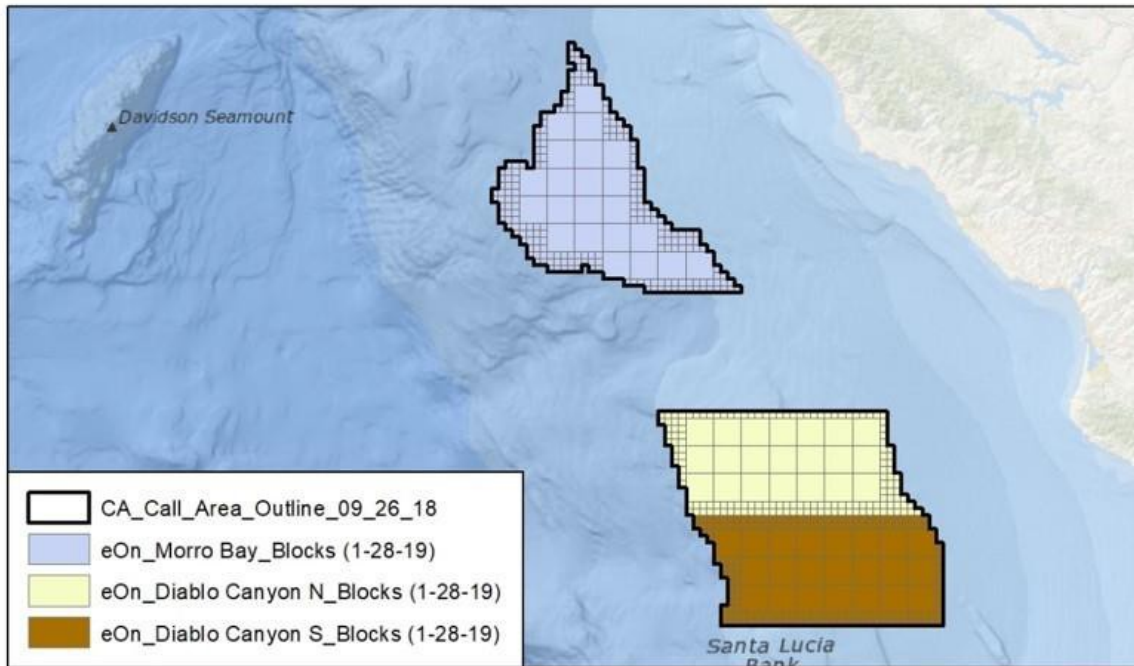
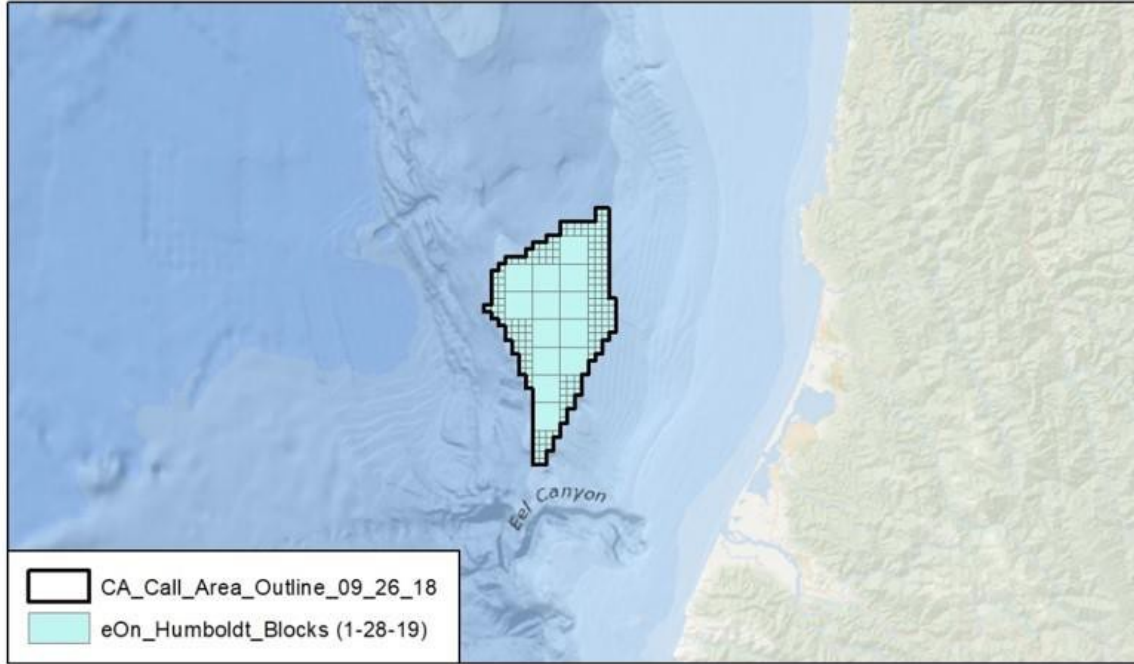


CA\_Call\_Interest (1-28-19)

# EC & R (eOn) Renewables Development, LLC



Bureau of Ocean Energy Management  
Pacific Outer Continental Shelf (OCS) Region

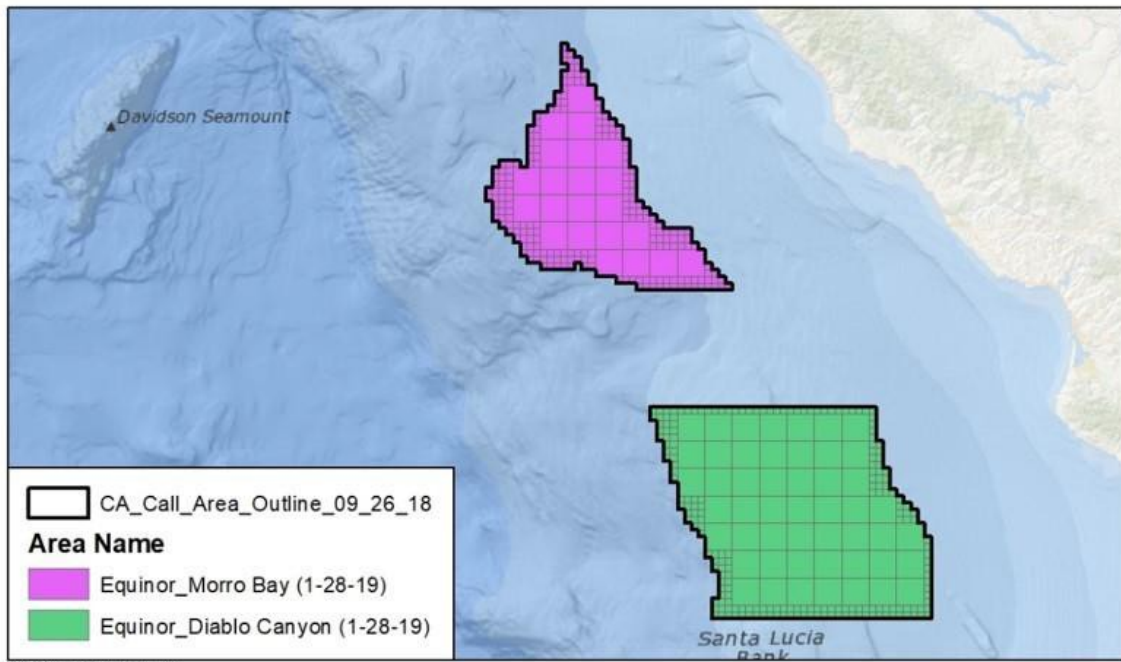
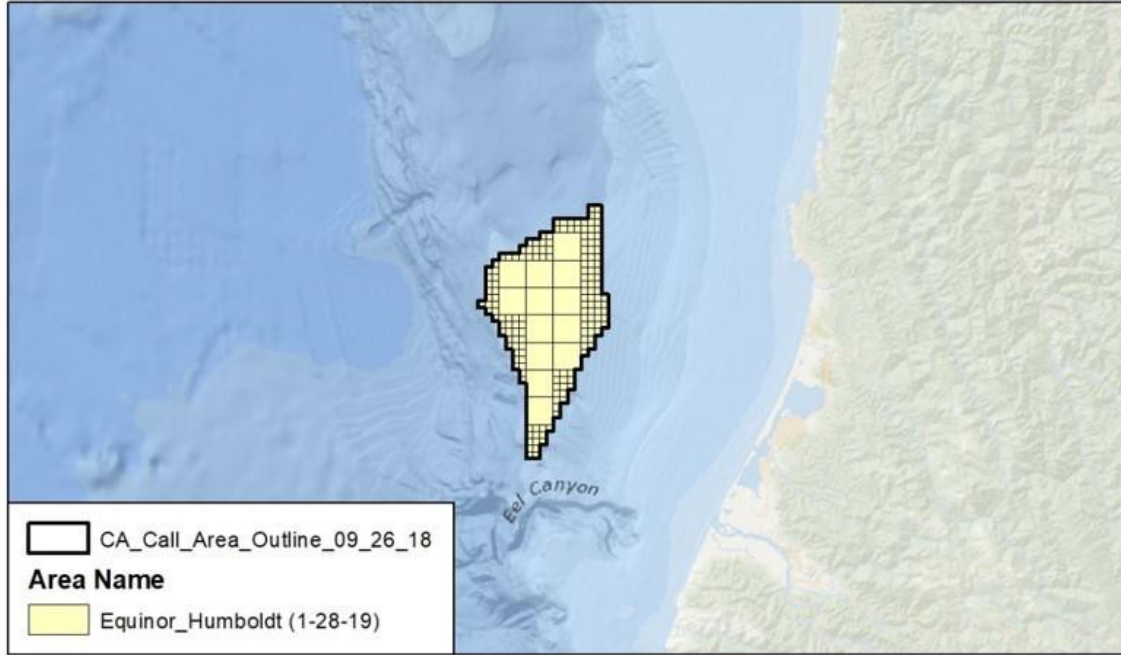


H:\GIS\Data\California\CA\_Call\_Interest\CA\_Call\_Interest (1-28-19).mxd

# Equinor Wind US, LLC

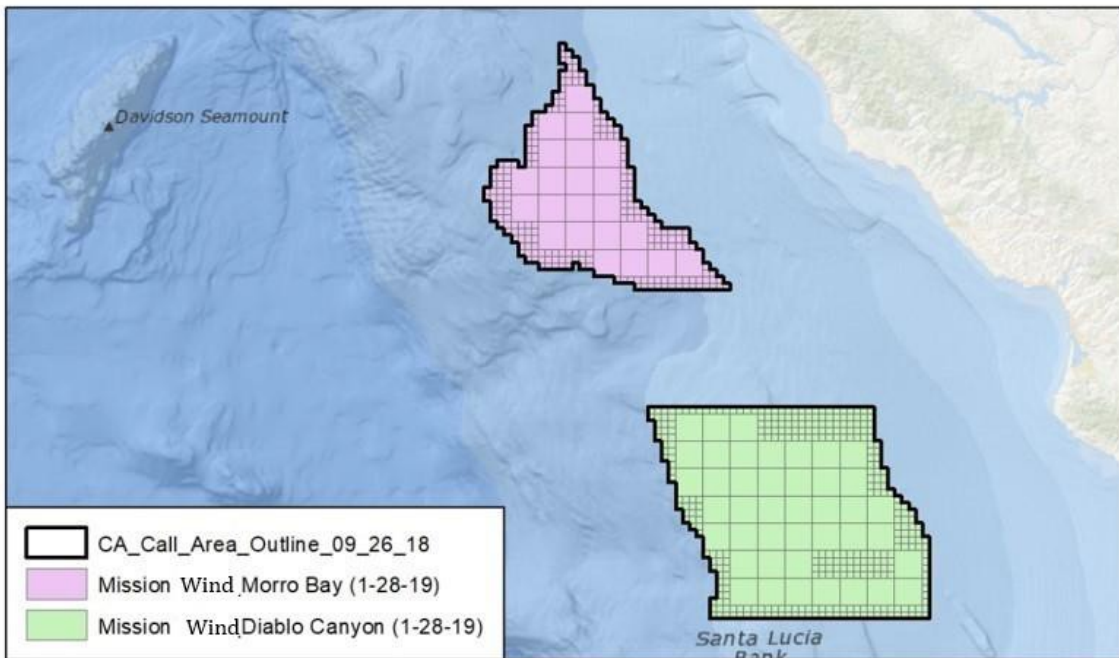
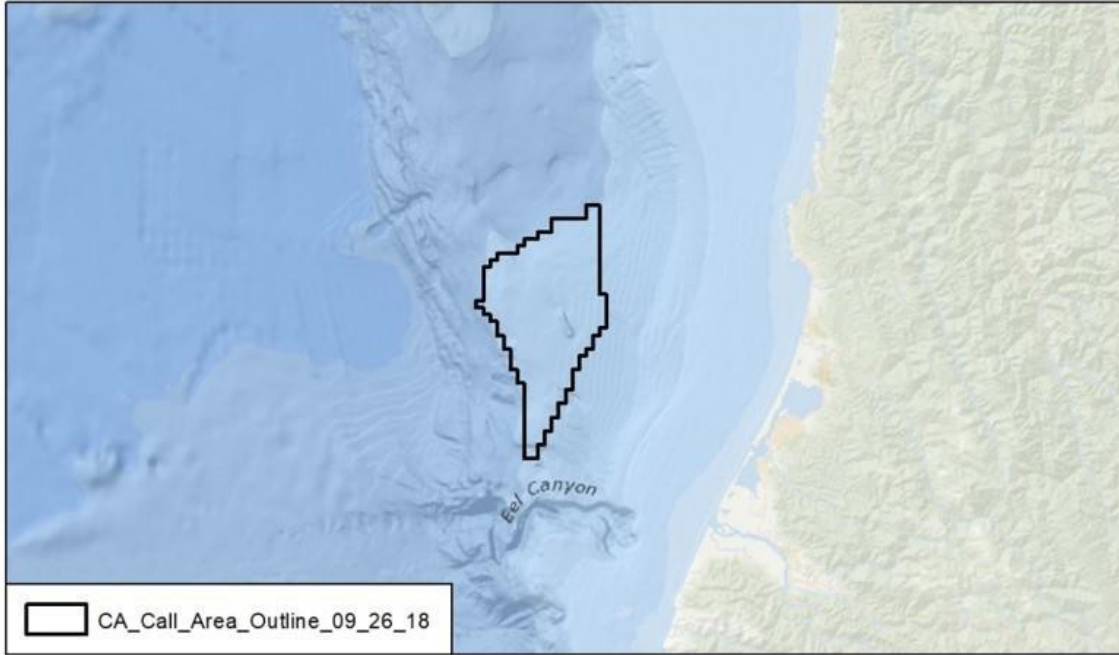


Bureau of Ocean Energy Management  
Pacific Outer Continental Shelf (OCS) Region



CA\_Call\_Interest (1-28-19)

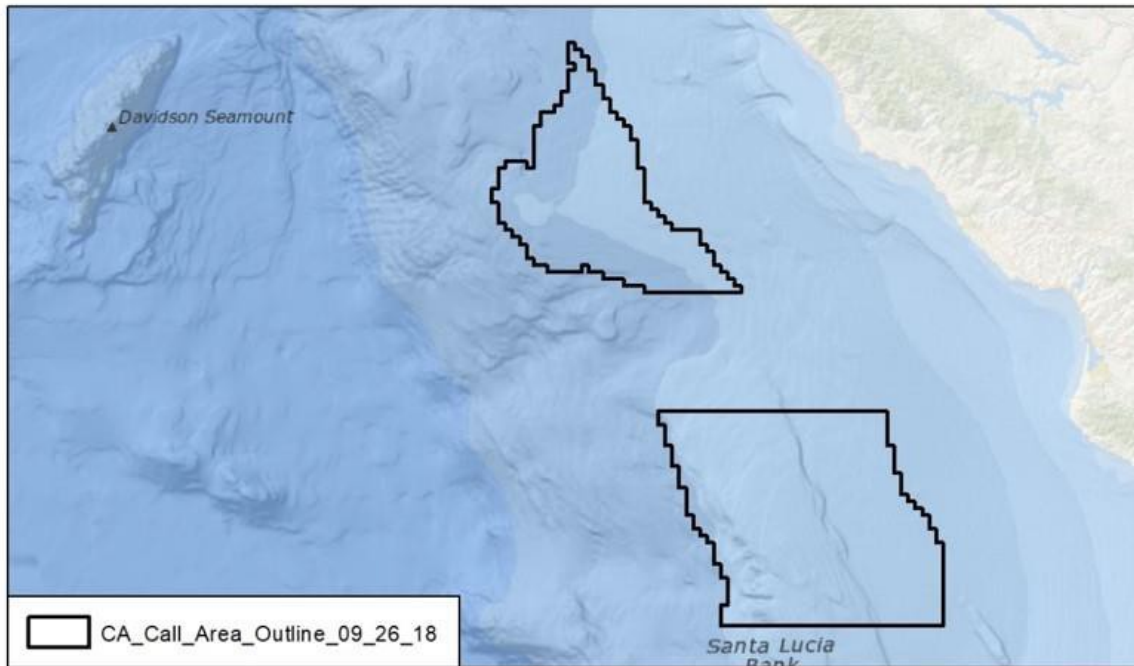
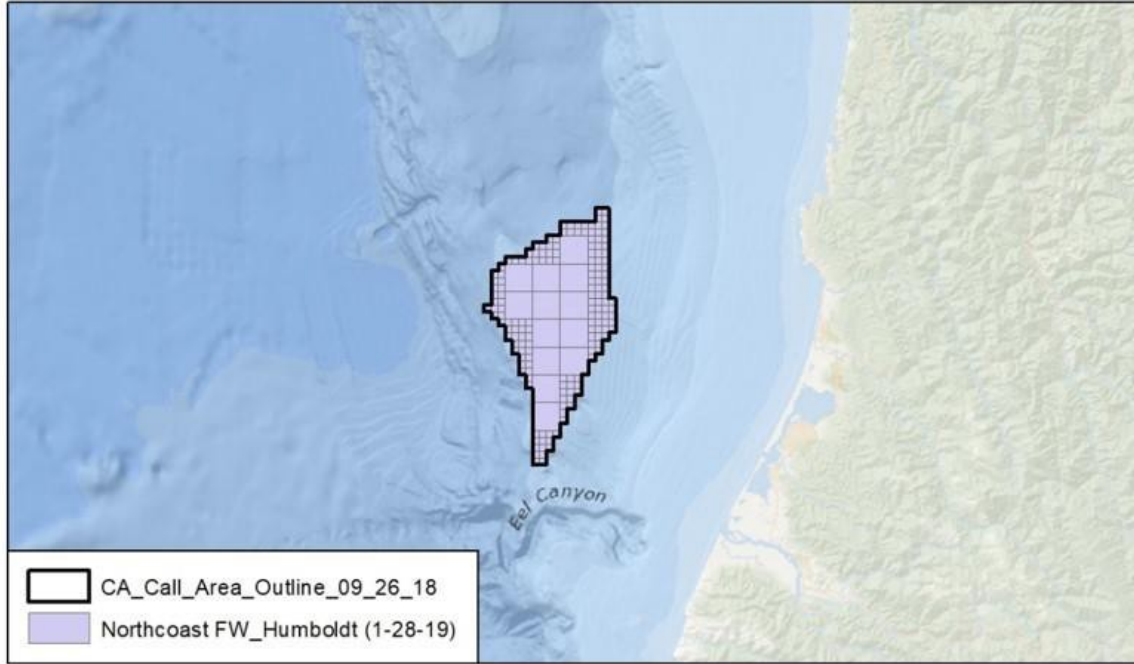
# Mission Floating Wind, LLC



# Northcoast Floating Wind, LLC



Bureau of Ocean Energy Management  
Pacific Outer Continental Shelf (OCS) Region

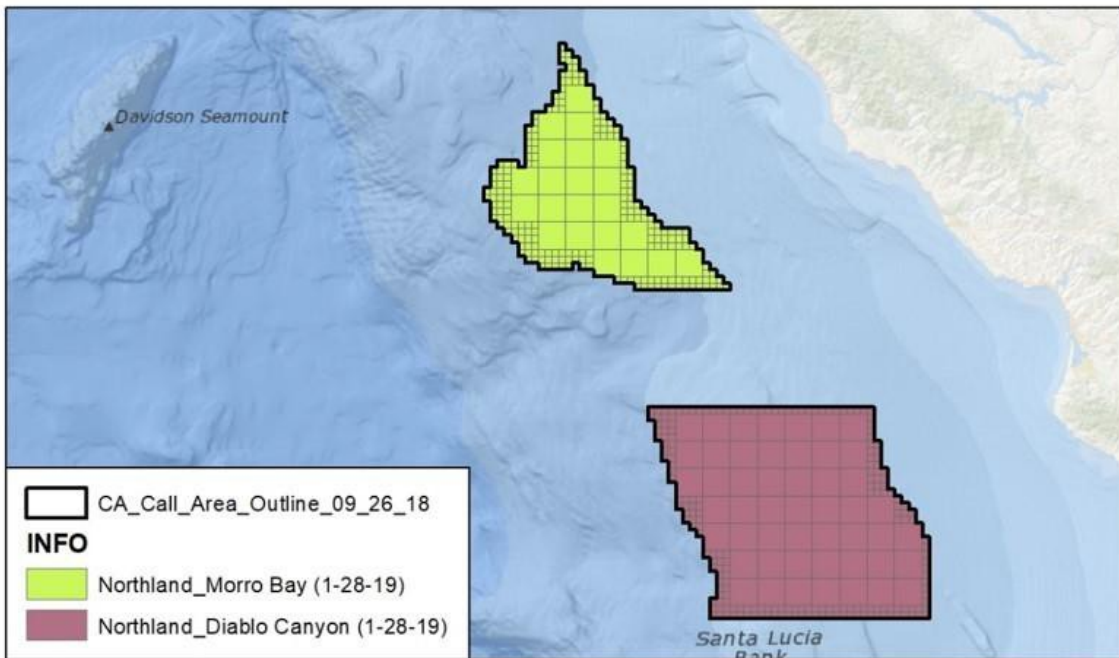
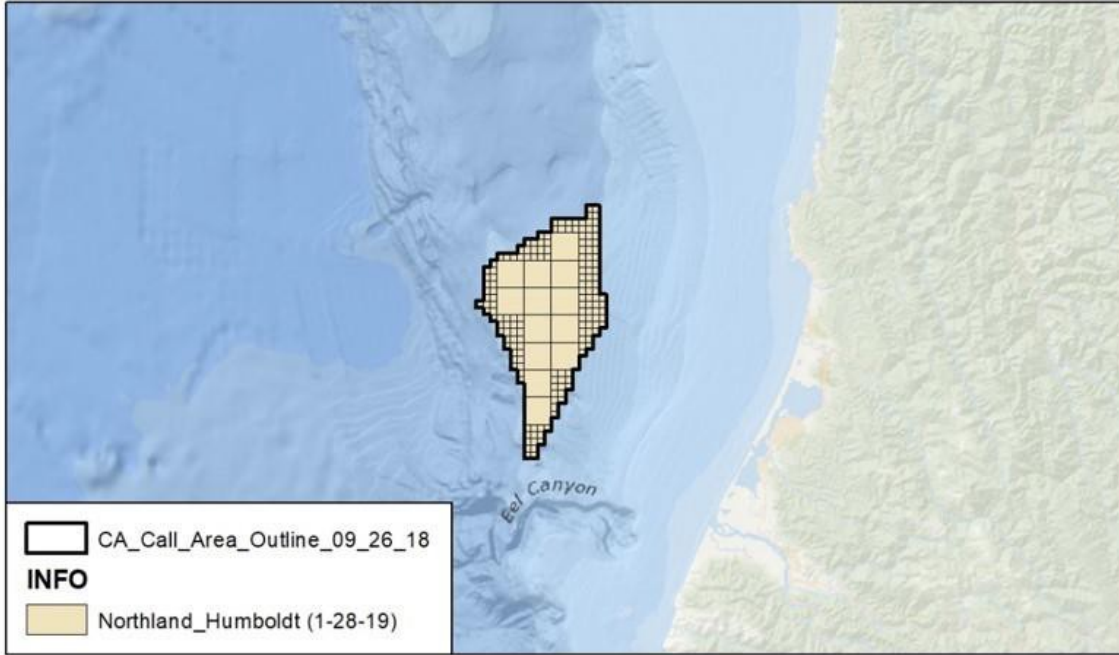


CA\_Call\_Interest (1-28-19)

Northland Power America, Inc.



Bureau of Ocean Energy Management  
Pacific Outer Continental Shelf (OCS) Region

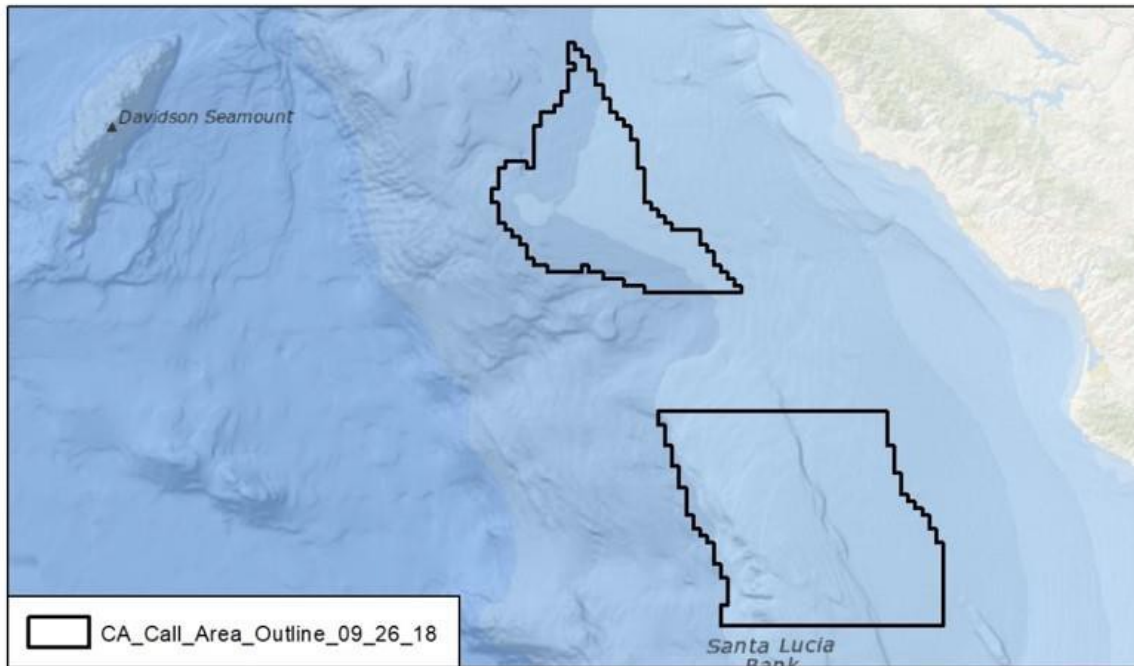
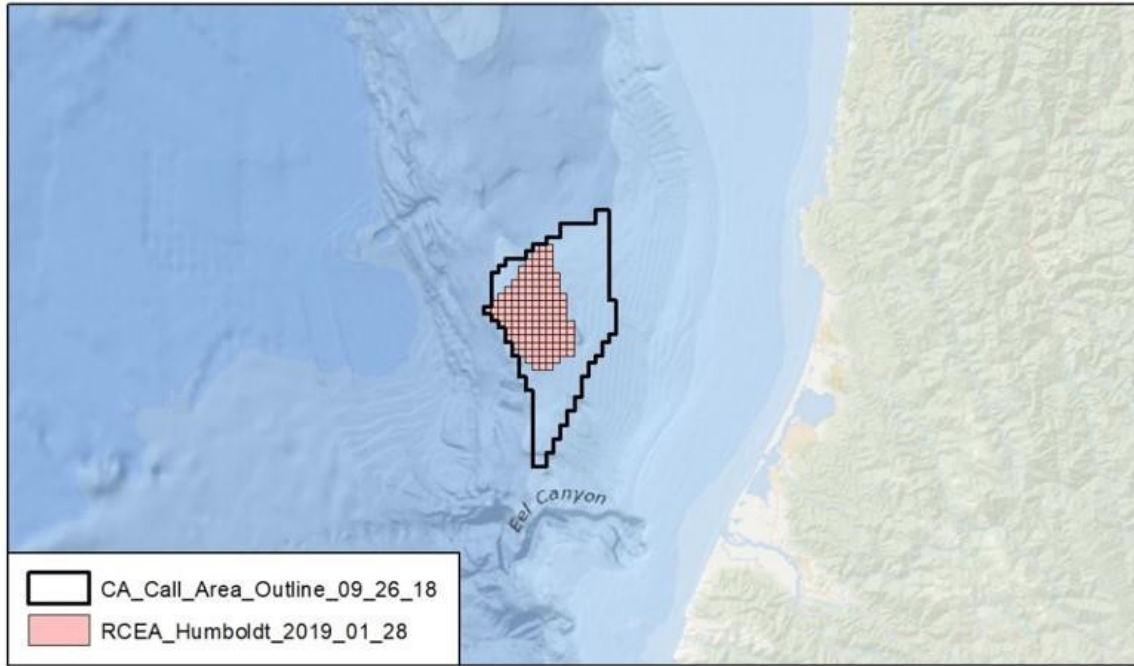


CA\_Call\_Interest (1-28-19)

# Redwood Coast Energy Authority (RCEA)



Bureau of Ocean Energy Management  
Pacific Outer Continental Shelf (OCS) Region



CA\_Call\_Interest (1-28-19)

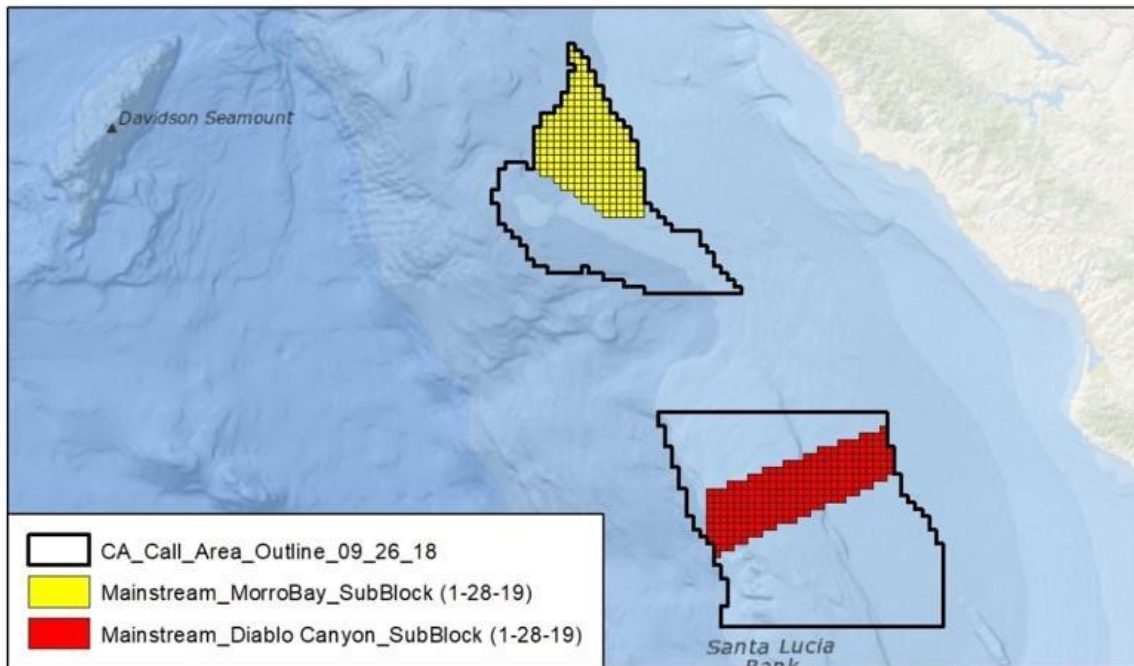
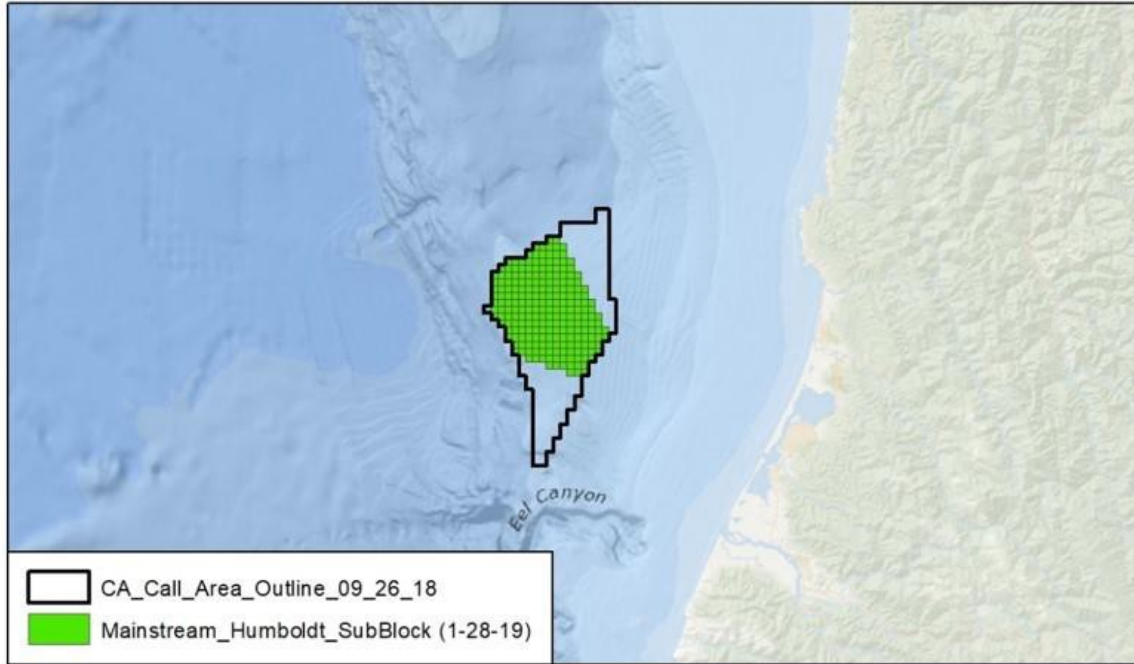


<b>Redwood Coast Energy Authority Call Area Nomination</b>			
<b>Humboldt Call Area</b>			
<b>Protraction Name</b>	<b>Protraction No.</b>	<b>Block Number</b>	<b>Sub-Block</b>
Eureka	NK10-10	6023	D
Eureka	NK10-11	6024	A,B,C,D,E,F,G,H,I,J,K,L,N,O,P
Eureka	NK10-12	6025	A,B,C,D,E,F,G,H,I,J,K,L,M,N,O,P
Eureka	NK10-13	6026	A,B,E,F,I,J,M,N
Eureka	NK10-14	6074	C,D,H
Eureka	NK10-15	6075	A,B,C,D,E,F,G,H,I,J,K
Eureka	NK10-16	6076	A,B
Crescent City	NK10-07	7023	P
Crescent City	NK10-08	7024	F,G,I,J,K,M,N,O
Crescent City	NK10-09	7073	C,D,G,H,J,K,L,M,N,O,P
Crescent City	NK10-10	7074	A,B,C,D,E,F,G,H,I,J,K,L,M,N,O,P
Crescent City	NK10-11	7122	D,G,H,J,K,L,O,P
Crescent City	NK10-12	7123	A,B,C,D,E,F,G,H,I,J,K,L,M,N,O,P
Crescent City	NK10-13	7124	A,B,C,D,E,F,G,H,I,J,K,L,M,N,O,P
Crescent City	NK10-14	7125	A,E,I,M

# US Mainstream Renewable Power, Inc.



Bureau of Ocean Energy Management  
Pacific Outer Continental Shelf (OCS) Region



H:\GIS\Data\California\CA\_Call\_Interest\CA\_Call\_Interest (1-28-19).mxd

<b>US Mainstream Renewable Power, Inc. Call Area Nominations</b>			
<b>Humboldt Call Area</b>			
<b>Protraction Name</b>	<b>Protraction No.</b>	<b>Block Number</b>	<b>Sub-Block</b>
Crescent City	NK10-07	7023	I,M,N,O,P
Crescent City	NK10-07	7024	C,D,E,F,G,H,I,J,K,L,M,N,O,P
Crescent City	NK10-07	7025	E,I,M,N
Crescent City	NK10-07	7072	D,G,H,K,L,O,P
Crescent City	NK10-07	7073	ALL
Crescent City	NK10-07	7074	ALL
Crescent City	NK10-07	7075	A,B,E,F,G,I,J,K,M,N,O,P
Crescent City	NK10-07	7122	C,D,G,H,K,L,O,P
Crescent City	NK10-07	7123	A
Crescent City	NK10-07	7124	ALL
Crescent City	NK10-07	7125	ALL
Crescent City	NK10-07	7126	E,I,M,N
Eureka	NK10-10	6023	D
Eureka	NK10-10	6024	A,B,C,D,E,F,G,H,I,J,K,L,N,O,P
Eureka	NK10-10	6025	ALL
Eureka	NK10-10	6026	ALL
Eureka	NK10-10	6027	A,B,E,F,G,I,J,K,M,N
Eureka	NK10-10	6074	B,C,D,H
Eureka	NK10-10	6075	A,B,C,D,E,F,G,H,K,L
Eureka	NK10-10	6076	A,B,C,D,E,F,G,H,I,J,K,L,N,O,P
Eureka	NK10-10	6077	A,B,E
<b>Morro Bay Call Area</b>			
<b>Protraction Name</b>	<b>Protraction No.</b>	<b>Block Number</b>	<b>Sub-Block</b>
San Luis Obispo	NI09-03	6102	L,P
San Luis Obispo	NI09-03	6103	M
San Luis Obispo	NI09-03	6152	D,L,P
San Luis Obispo	NI09-03	6153	A,B,E,F,I,J,K,M,N,O
San Luis Obispo	NI09-03	6202	D,G,H,K,L,N,O,P
San Luis Obispo	NI09-03	6203	ALL
San Luis Obispo	NI09-03	6204	I,M
San Luis Obispo	NI09-03	6251	D,H,K,L,O,P
San Luis Obispo	NI09-03	6252	ALL
San Luis Obispo	NI09-03	6253	ALL
San Luis Obispo	NI09-03	6254	A,B,E,F,G,I,J,K,L,M,N,O,P

San Luis Obispo	NI09-03	6301	C,D,G,H,K,L,O,P
San Luis Obispo	NI09-03	6302	ALL
San Luis Obispo	NI09-03	6303	ALL
San Luis Obispo	NI09-03	6304	ALL
San Luis Obispo	NI09-03	6305	A,E,I,M
San Luis Obispo	NI09-03	6351	D
San Luis Obispo	NI09-03	6352	A,B,C,D,F,G,H,K,L
San Luis Obispo	NI09-03	6353	ALL
San Luis Obispo	NI09-03	6354	ALL
San Luis Obispo	NI09-03	6355	A,B,E,F,I,J,M,N
San Luis Obispo	NI09-03	6403	B,C,D,H
San Luis Obispo	NI09-03	6404	A,B,C,D,E,F,G,H,I,J,K,L
San Luis Obispo	NI09-03	6405	A,B,E,F,I,J
<b>Diablo Canyon Call Area</b>			
<b>Protraction Name</b>	<b>Protraction No.</b>	<b>Block Number</b>	<b>Sub-Block</b>
San Luis Obispo	NI09-03	6812	O,P
San Luis Obispo	NI09-03	6813	J,K,L,M,N,O,P
San Luis Obispo	NI09-03	6814	E,I,M
San Luis Obispo	NI09-03	6859	P
San Luis Obispo	NI09-03	6860	K,L,M,N,O,P
San Luis Obispo	NI09-03	6861	D,F,G,H,I,J,K,L,M,N,O,P
San Luis Obispo	NI09-03	6862	ALL
San Luis Obispo	NI09-03	6863	ALL
San Luis Obispo	NI09-03	6864	A,B,E,F,I,J,M,N
San Luis Obispo	NI09-03	6907	L, P
San Luis Obispo	NI09-03	6908	G,H,I,J,K,L,M,N,O,P
San Luis Obispo	NI09-03	6909	B,C,D,E,F,G,H,I,J,K,L,M,N,O,P
San Luis Obispo	NI09-03	6910	ALL
San Luis Obispo	NI09-03	6911	ALL
San Luis Obispo	NI09-03	6912	A,B,C,D,E,F,G,I
San Luis Obispo	NI09-03	6913	A
San Luis Obispo	NI09-03	6914	D,H,L,P
San Luis Obispo	NI09-03	6957	ALL
San Luis Obispo	NI09-03	6958	ALL
San Luis Obispo	NI09-03	6959	A,B,C,D,E,F,G,H,I,J,K,L,M
San Luis Obispo	NI09-03	6960	A,B,C,D,E,F
San Luis Obispo	NI09-03	7007	D,H
San Luis Obispo	NI09-03	7008	A,B,C,D,E,F,G,H,I,J,K,M
San Luis Obispo	NI09-03	7009	A,B,C,E