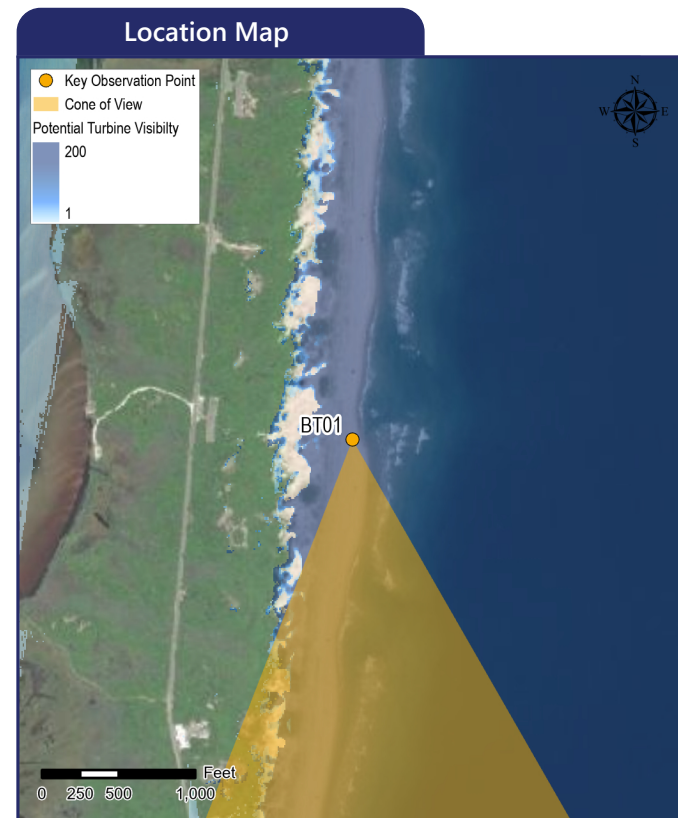
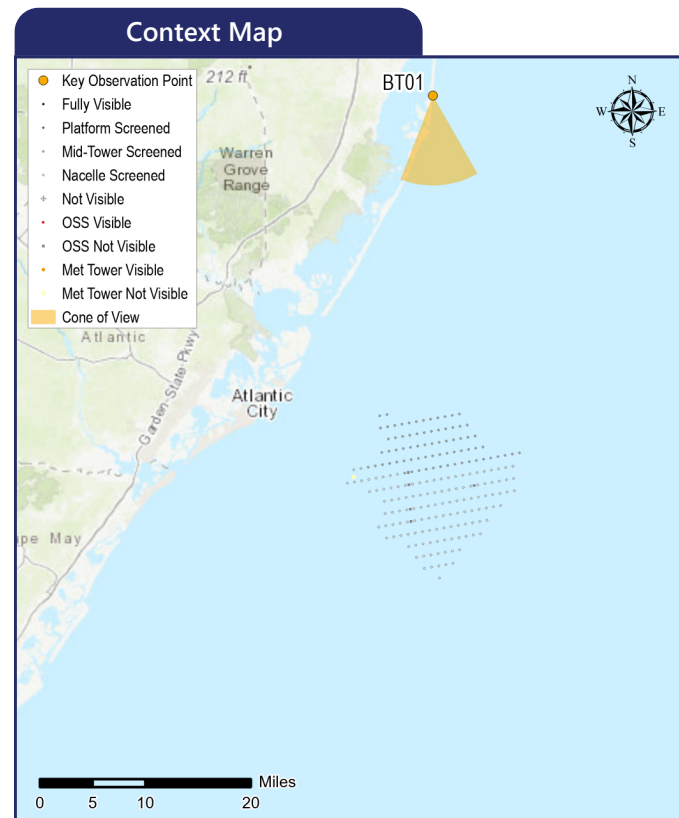


# BT01 Island Beach State Park

Berkeley Township, Ocean County, New Jersey



The image above is a +/- 124° panorama photograph from the Island Beach State Park, panning clockwise from east-southeast (left) to southwest (right). The yellow rectangle represents the extent of the simulated photograph(s).



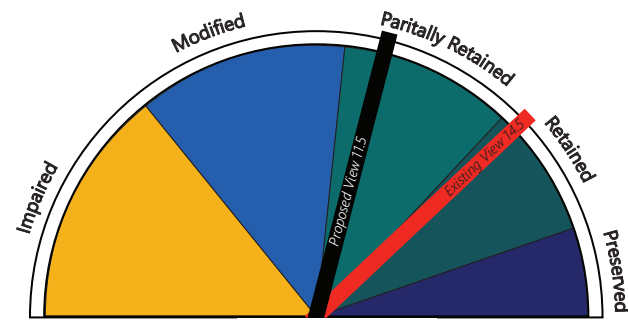
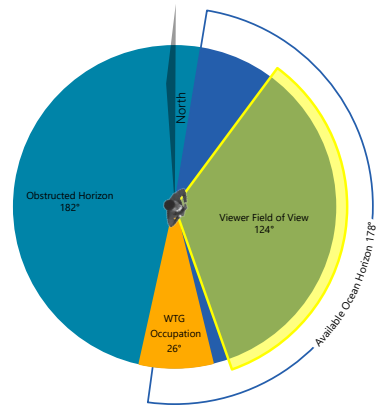
Simulation Information	
Coordinates:	39.80805°N, 74.08997°W
Character Area:	Undeveloped Beach, Seascape (SCA)
User Group:	Residents/Tourists, Fishermen
Direction of View:	South
Distance to Nearest Visible Turbine:	30.25 miles
Visually Sensitive Resource:	Island Beach State Park
Environmental Information	
Date Taken:	08/21/2020
Time:	9:35 AM
Temperature:	79°F
Humidity:	62%
Visibility:	10 miles
Wind Direction:	South-southwest
Wind Speed:	6 mph
Conditions Observed:	Partly Cloudy
Photograph Information	
Camera:	Canon EOS 5D Mark IV
Resolution:	30.4 Megapixels
Focal Length:	50mm
Camera Height:	10.52 feet AMSL
Notes	
Printed at 100%, the photosimulations are 15 inches wide by 10 inches high. At this size, the photosimulation(s) should be viewed from a distance of 21 inches.	



Map considers screening by curvature of the earth, viewer height, and WTG height only. Considering landscape features, 190 WTGs will be visible.

## Field of View Visual Impact Rating

### Impact Rating Summary



**-3.0. Significant**

## Existing Conditions

Scenic Quality: Retained  
 Rating Panel Score Average: 14.5  
 Rating Panel Score Range: 13.0 - 16.0

This view is from Island Beach State Park in Berkley Township, New Jersey. Island Beach State Park is a preserved barrier island that protects a variety of natural shoreline and nearshore habitats. The park contains close to 10 miles of sandy beach, an extensive shoreline along Barnegat Bay, dense maritime forests, rolling sand dunes, and tidal marshes. The State of New Jersey purchased the 2,694-acre property in 1953, and the park was officially opened in 1959. The majority of visitors to Island Beach State Park come to swim in the ocean, surf or fish from the beach, but the park also provides recreational opportunities for hikers and other outdoor enthusiasts.

The view to the south from this location looks straight down the beach, with the blue-green ocean on the left and grassy dunes on the right. The ocean, beach and dunes proceed away from the viewer, and come together at a distant vanishing point that draws the viewer's eye to the right side of the selected photo. The beach itself is a broad expanse of relatively level open sand, and the light blue sky over head is streaked with bands of thin white clouds. At the time the photo was taken, few people were on the beach, but vehicle tracks in the sand indicate more intensive human activity. Despite the presence of these tracks, the beach has a clean, uncluttered, and natural character.

Rating panel members indicated that the view provides a rare opportunity to observe a natural beach and dune-scape with minimal human influence less the numerous beachgoers and frequent vehicle traffic. Rating panel scores for the existing conditions photographs ranged from 13.0 to 16 (average score = 14.5) indicating that this view is retained.

## Proposed Conditions

Scenic Quality: Partially Retained  
 Rating Panel Score Average: 11.5  
 Rating Panel Score Range: 9.7 - 14.0  
 Impact Magnitude: 3.0 (Significant)

Viewshed analysis suggests that Project visibility from this general area will be available along the beach but becomes quickly blocked by the vegetated dunes on the right with scattered areas of discrete visibility due to elevation and limited vegetation at specific locations. Potential views become available again from portions of the park to the west along Barnegat Bay.

With the proposed Project in place, a considerable portion of the WTGs is screened by curvature of the earth, but the large rotors appear and fine, dark features on the horizon. In areas where considerable row stacking occurs, the WTGs read as a heavier mass on the horizon, increasing their prominence slightly. Rating panel members had a variable range of reactions to the impact resulting from the Project WTGs, with the VIA scores ranging from 9.7 to 14 (average score = 11.5). These scores indicate an average reduction of 3.0 points in comparison to the existing view, with individual rating panel members indicating reductions that ranged from 0.3 to 6.3. At the low end of this range, panel members indicated that, "The addition of the wind turbines on the horizon does not immediately attract the viewer's attention when taking in this highly attractive seascape. Upon observing the greater view to the sand, surf, dune vegetation and then horizon, the eye moves to the center of the view and fixes on the light gray, fine textured turbine silhouettes on the horizon. Upon focusing on the darker mass of ordered, stacked turbines in the center view, the additional individualized turbines to the left and right of the center mass also become more visible". The panel member indicating the highest degree of visual change noted, "The proposed turbines, though distant and camouflaged in the haze, become the only visible sign of development in this view. They interrupt the horizon flowing across the water and into the dune landscape. The low grass covered dunes are the primary focus in the view until the turbines are added across the majority of the scene". With the Project in place, this view becomes partially retained, suggesting significant visual impacts may occur during high visibility conditions such as those presented in the photosimulation.

Considering the scale, compatibility, and spatial dominance factors that influenced the visual impact rating at this KOP, panel ratings indicated that the WTGs present low to moderate scale contrast with landform, vegetation, land use, water resources and user activity. The WTGs we found to be somewhat compatible with and presented low to moderate spatial dominance with water resources, landform, vegetation, land use, and user activity. Consistent with the anticipated compatibility, scale contrast, and spatial dominance impacts associated with the Project, panel members assigned the Project visibility an average VTL of 3 from this KOP.

## Visual Threshold Level (VTL)

**3** An object/phenomenon that can be easily detected after a brief look and would be visible to most casual observers, but without sufficient size or contrast to compete with major landscape/seascape elements.

## Principles of Composition and Factors Affecting Visual Impact Summary

Design Elements	Description
Focal Point	At the vanishing point where the green vegetation meets the blue sea and people congregate in the view.
Order	The natural order is within the beach landscape: open seemingly endless water, waves crashing at the shore, wide sandy beach, and grass.
Visual Clutter	None observed by the rating panel.
Movement	Ocean waves, beach goers.
Duration & Frequency of View	Short duration and occasional.
Atmospheric Conditions	A fully clear day may increase visibility, while a overcast/hazy will decrease visibility
Lighting Direction	Backlit
Scenic or Recreational Value	This is a wide open sandy beach free of any visible development; Island Beach State Park.

## Compatibility and Contrast Rating Average

Island Beach State Park			
Resource	Compatibility	Scale	Spatial Dominance
Water Resources	2.4	1.9	1.9
Landform	2.0	1.5	1.8
Vegetation	2.0	1.5	1.5
Land Use	1.8	1.5	1.3
User Activity	1.8	1.5	1.5
	1 – Compatible 2 – Somewhat Compatible 3 – Not Compatible	1 – Minimal 2 – Moderate 3 – Severe	1 – Subordinate 2 – Co-Dominant 3 – Dominant

# BT01 Island Beach State Park

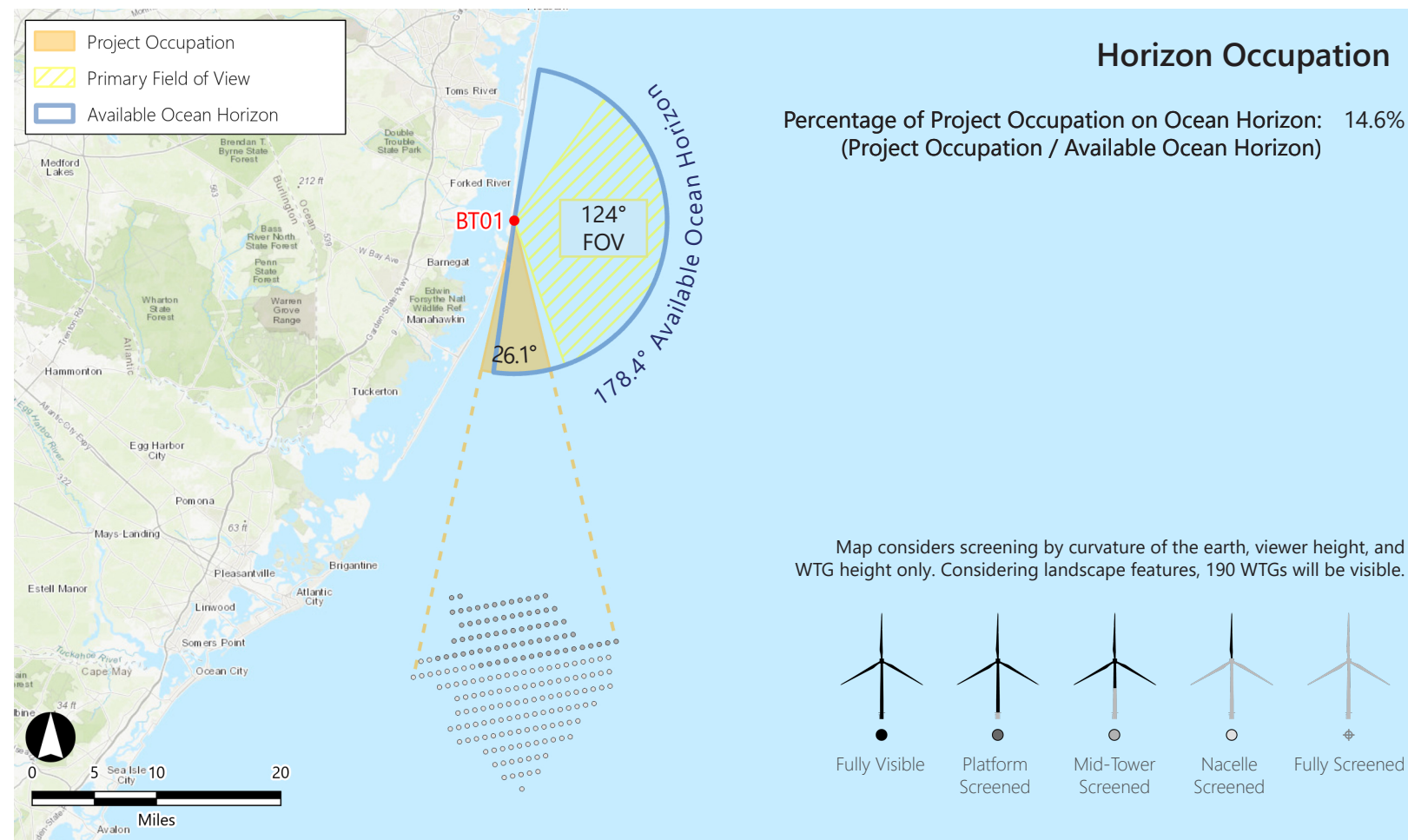
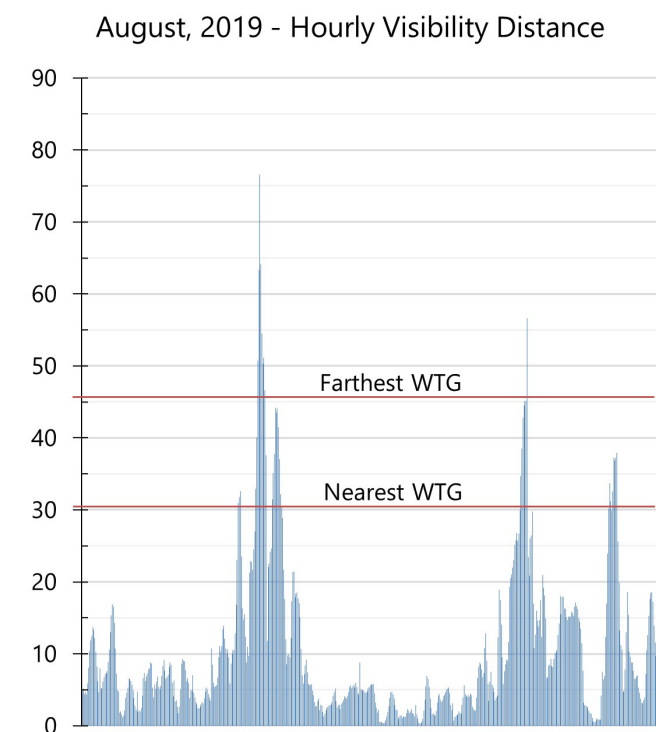
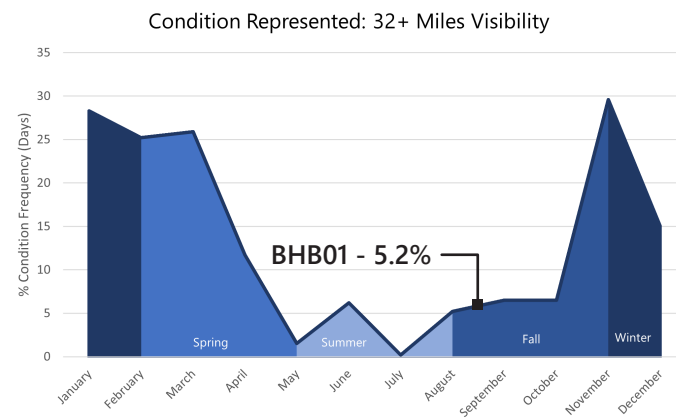
Berkeley Township, Ocean County, New Jersey

## KOP Information

Primary Field of View: East  
 Distance to Closest WTG: 30.25 miles  
 Camera Height: 10.52 ft  
 User Groups: Residents, Tourists, Fishermen

## Atmospheric Perspective

The effect the atmosphere has on the appearance of an object as viewed from a distance.



## WTG Color Contrast

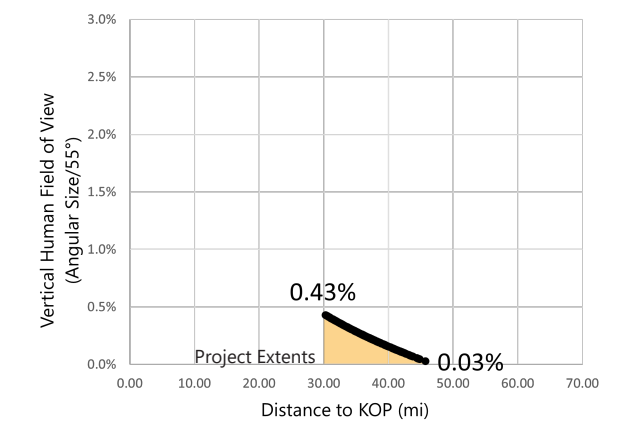
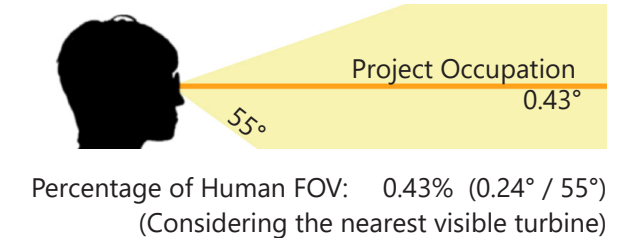
Color Contrast Rating: 1.76  
 Turbine  
 Background

Lighting Condition: Side lit  
 Season: Summer  
 Sky Condition: Partly Cloudy  
 Atmospheric Condition: > 10 Miles

## SIMILAR VIEWING PARAMETERS:

KOP BLB02 illustrates the project from 27.32 miles in the back lit condition. This provides an indication of how the turbines may appear from this KOP during morning conditions.

## Vertical Occupation



Existing Conditions



Printed at 100% the resulting photosimulation size is 15 inches wide by 10 inches high. At this size and focal length, the photosimulation should be viewed from a distance of 21 inches.



This scale is designed to insure the photosimulation images are printed at the intended size.

Photosimulation



**Atlantic Shores Offshore Wind Project**

Outer Continental Shelf - New Jersey

Key Observation Point: BT01 - Island Beach State Park

Attachment E: Photosimulations: Page 18 of 159

Printed at 100% the resulting photosimulation size is 15 inches wide by 10 inches high. At this size and focal length, the photosimulation should be viewed from a distance of 21 inches.



This scale is designed to insure the photosimulation images are printed at the intended size.