

Central Atlantic Wind Energy Areas

Central Atlantic Project Overview

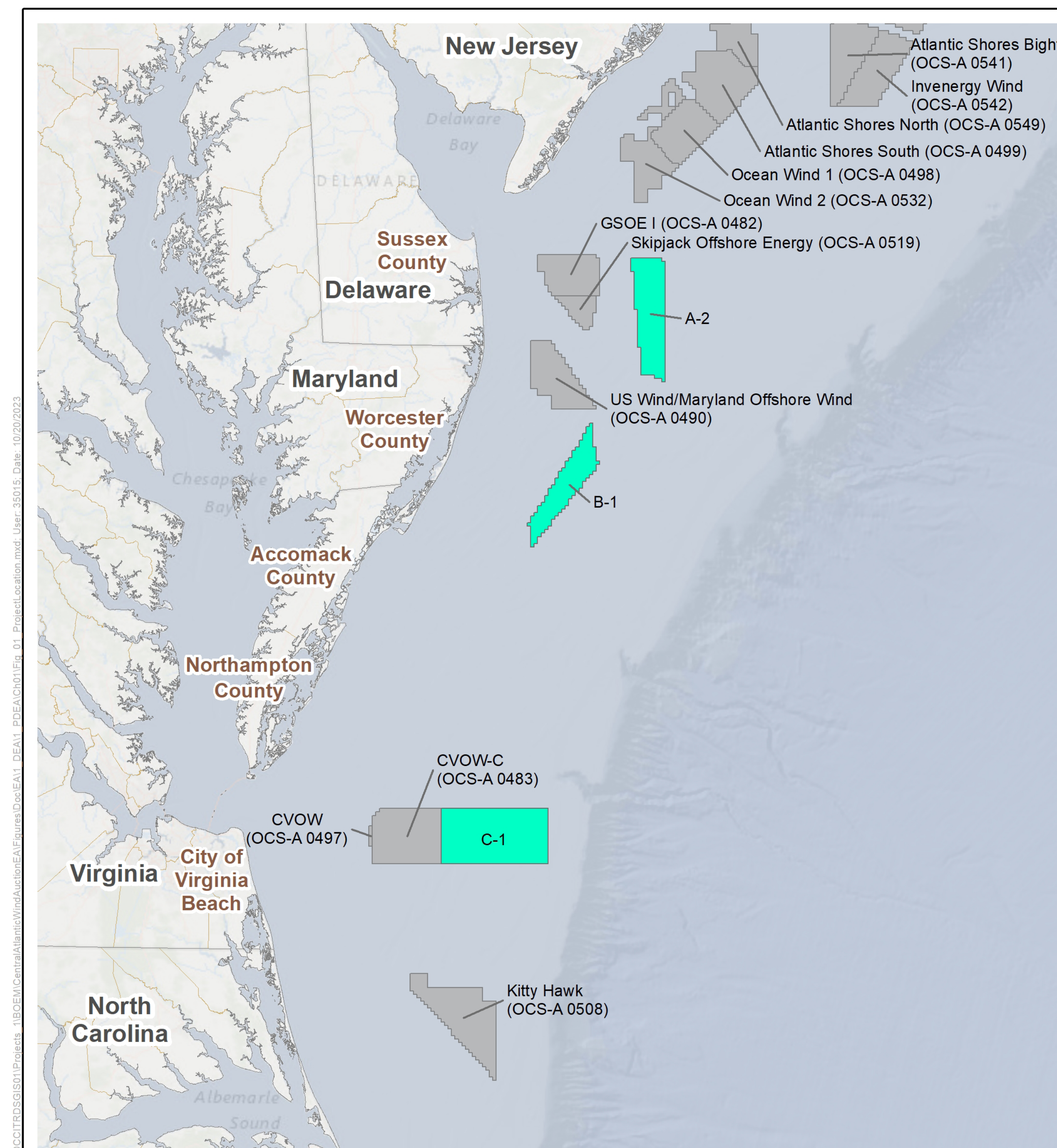
BOEM proposes to issue commercial leases within the wind energy areas (WEAs) and grant rights-of-way (ROWS) and rights-of-use and easement (RUEs) in the region to provide lessees the exclusive right to submit to BOEM plans to assess the physical characteristics of areas on the OCS of the Central Atlantic. BOEM could issue leases as early as mid- to late-2024 and continue through 2025.



Site assessment and characterization activities

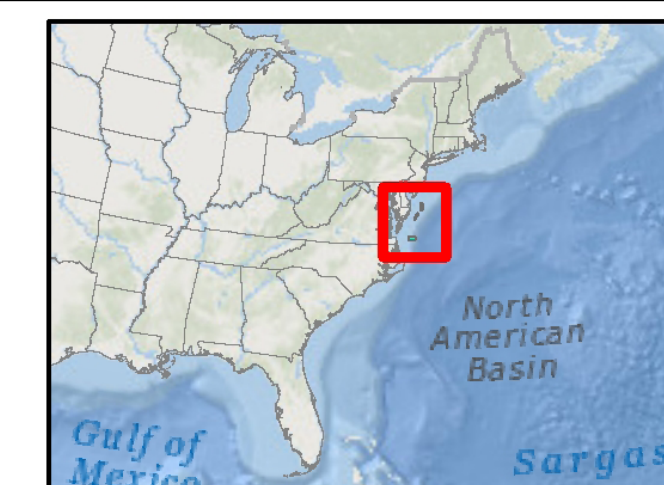
- Meteorological and Oceanographic Buoys** — temporarily install sensors to collect atmospheric and oceanographic observations
- Geophysical Surveys** — use remote sensing to collect information about the physical environment, such as archaeological resources, geohazards, habitat, cable routes, sediment characteristics, unexploded ordinance
- Geotechnical Surveys** — gather information about the physical characteristics of the soil and rocks to determine whether the seabed can support foundation structures
- Biological Surveys** — understand potential impacts to biological resources (for example, benthic habitat and birds) if wind energy development were to occur


Central Atlantic WEAs

- Consist of 356,545 acres over three WEAs: A-2, B-1, and C-1
- Are at least 24.5, 18.9, 19.0, and 35.4 nautical miles from Delaware, Maryland, Virginia, and North Carolina, respectively
- Have water depths ranging from 21 to 148 meters deep



 Final Central Atlantic Wind Energy Areas
 Other BOEM Lease Areas



Source: BOEM 2023.
 0 25 50 Miles
 1:2,000,000