

# Sam Blakeslee

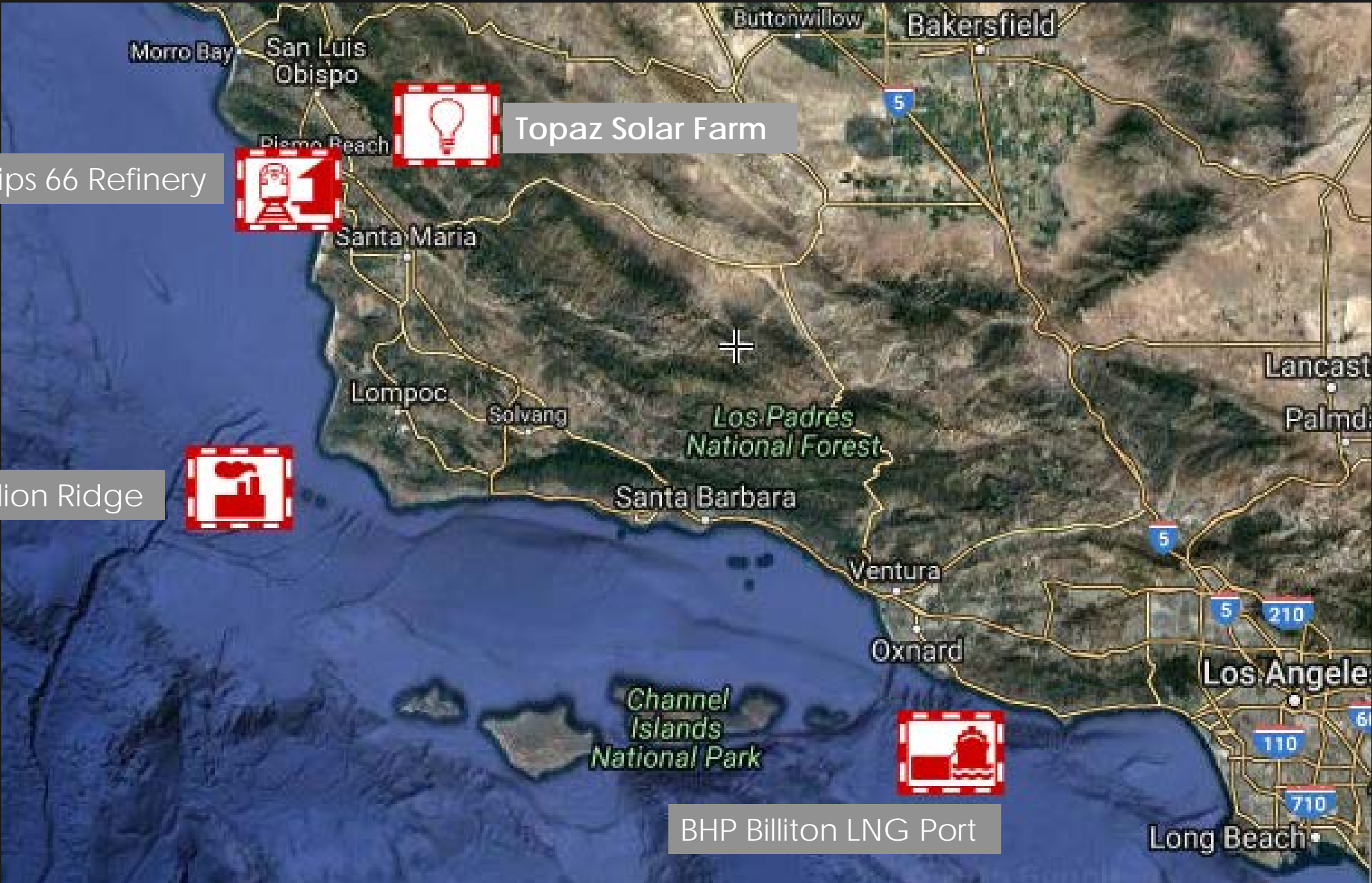
The Importance of Stakeholder Engagement in Offshore Renewable Energy Opportunities

# Anna Karenina Principle – Leo Tolstoy

## CHAPTER I

**A**LL happy families resemble one another; every unhappy family is unhappy in its own way.

- Principle: *All successful projects are alike, every unsuccessful project is unsuccessful in its own way.*



Phillips 66 Refinery



Topaz Solar Farm



Tranquillon Ridge



BHP Billiton LNG Port

# Phillips 66 – Stop the Oil Trains

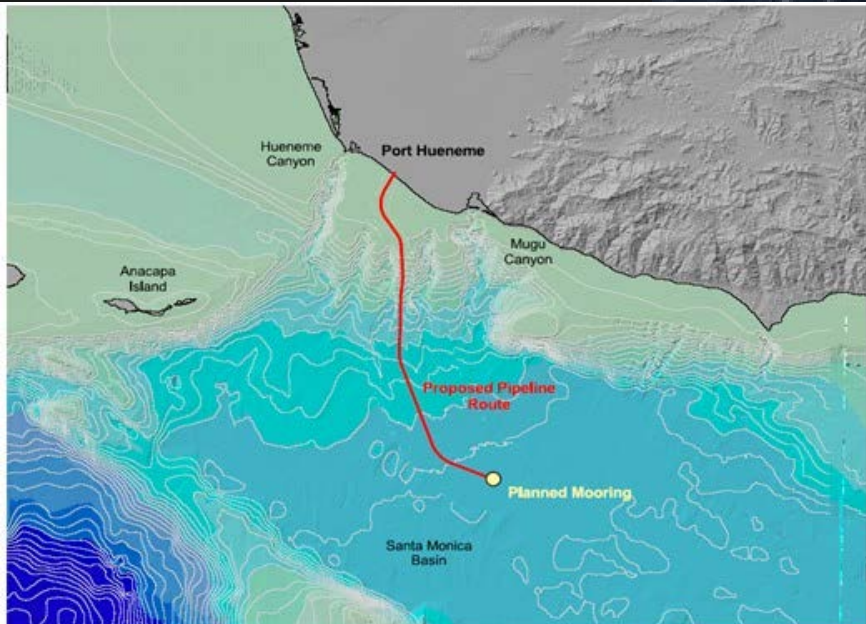


- \$60 Million CapX
- 11 Million Gallons of Crude Refined per Week
- \$600K Million in Tax Revenue
- 200 Existing Jobs at Refinery
- Improvement Entirely on Refinery Property
- 2:1 Conservation Requirement
- 3-2 Vote Down SLO Planning Commission

# BHP Billiton – LNG Terminal



- 21 miles offshore of Oxnard
- 800 million CF of natural gas per day
- 13% of California's avg. consumption at the Time
- \$550 million



# Tranquillion Ridge



- 2007 PXP/EDC Project
- 200 Million Barrels over 14 Years
- \$1.8 Billion State - \$100 Mil advance to General Fund
- \$350 Million SB County
- 3900 Acres Preserved
- 4 Oil Platforms Decommissioned
- 2 Shore Stations Decommissioned
- Carbon Neutral (Offsets)

# Topaz Solar Farm

## How big is the Topaz solar farm?



At 9.5 square miles, Topaz falls somewhere in between a small city to multiple parks. It is...

**1/3** The size of Manhattan  
**7.3** Central Parks  
**90** Magic Kingdoms  
**4,598** football fields

- 550MW
- \$2.4 Billion
- 10 Square Miles
- 400 Construction Jobs
- 22,000 Acres protected post decommissioning

# Takeaways

- Early engagement with key players
- Credible local project partners and validators
- Align the incentives of project to locals where possible

**San Joaquin Valley Gateway**



**DRECP**

DESERT RENEWABLE ENERGY CONSERVATION PLAN