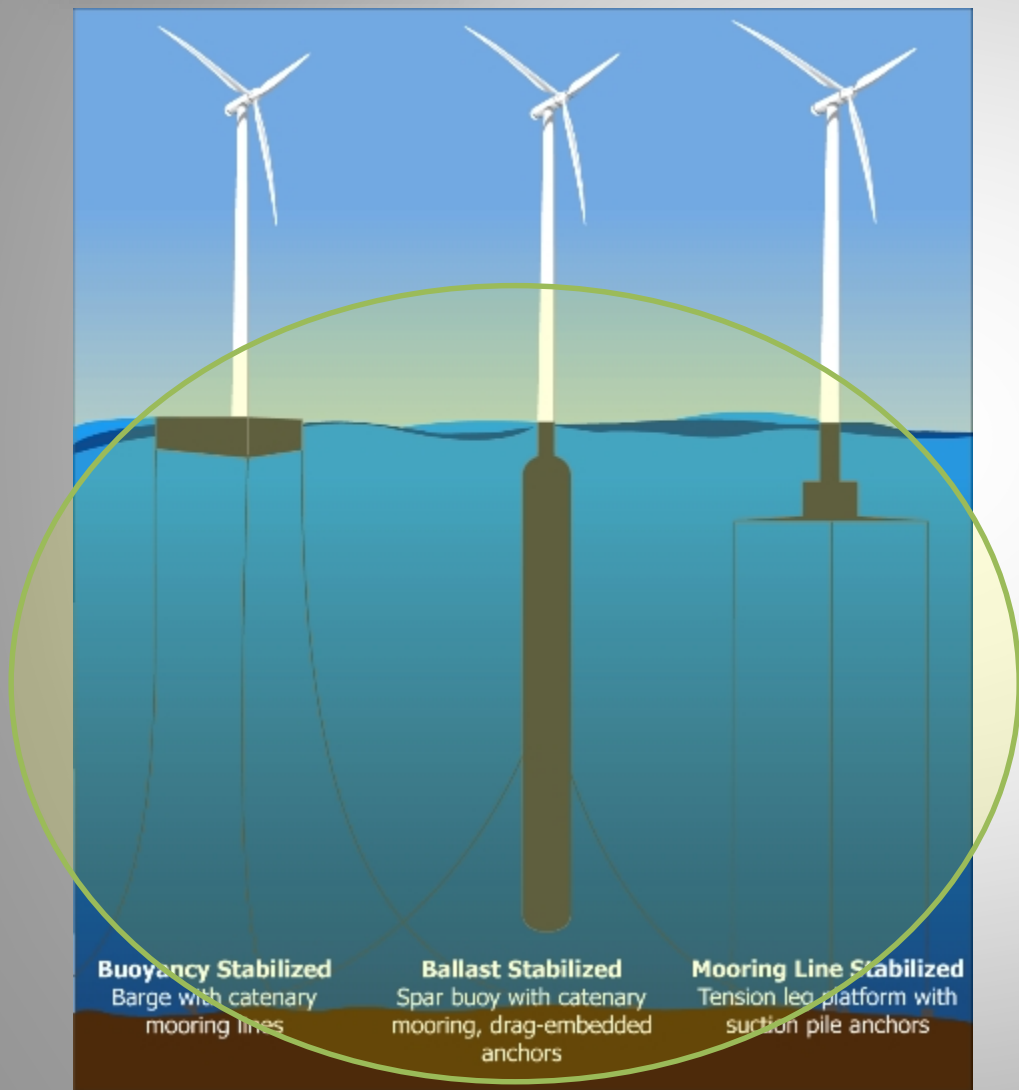


# Potential Interactions Between Offshore Renewable Energy Activities, Marine Mammals and Sea Turtles



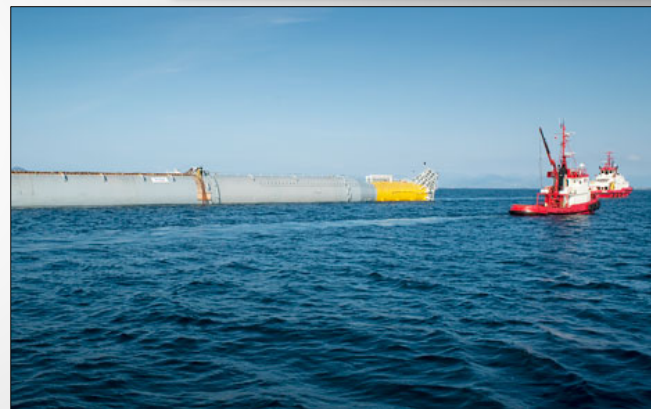
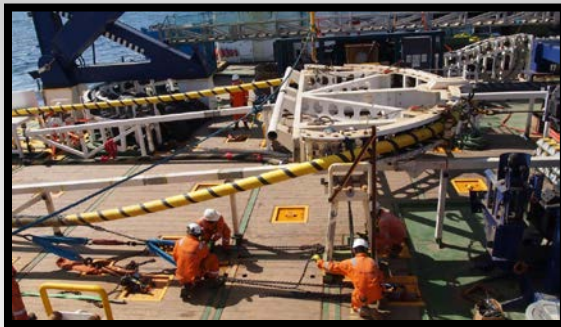


For California:

- Floating Structures
- Mooring Lines
- Anchoring System
- Cabling

## Construction:

- Cable
- Assembly
- Moorings
- Towing
- Array Connections





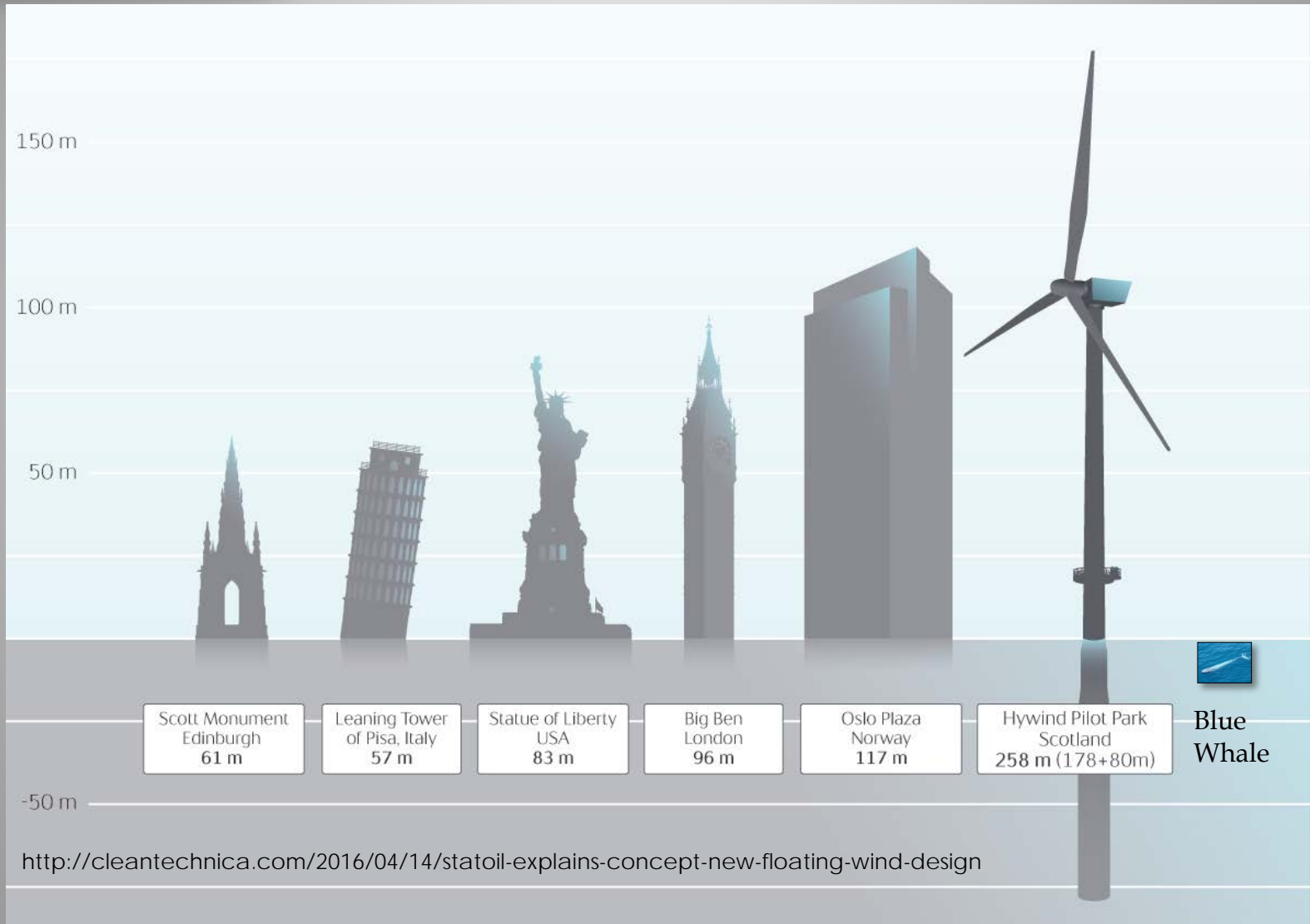
# Understanding Proposed Activities

## Operation:

- Monitoring
- Repair
- Maintenance
- Decommissioning

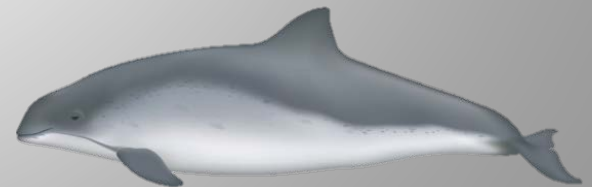


# Understanding Proposed Activities



# Understanding the Species

- Distribution
- Life History
- Vulnerabilities



# Understanding the Species



- Noise
- Entanglement
- Collision
- Displacement





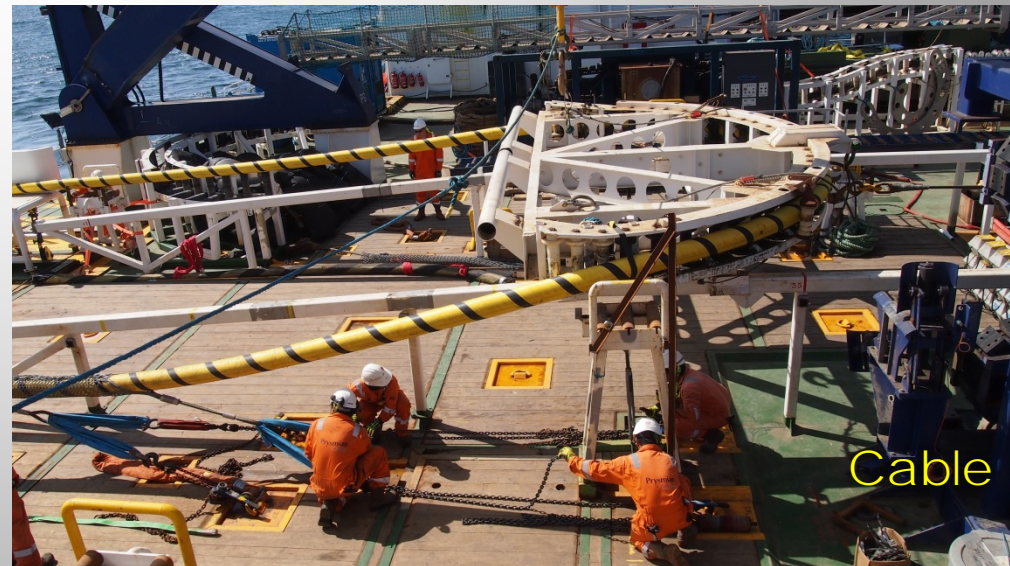
## Evaluating Risk

- Construction
- Operation
- Species Sensitivity



## Evaluating Risk

- Physical Characteristics of Materials
- Species Characteristics



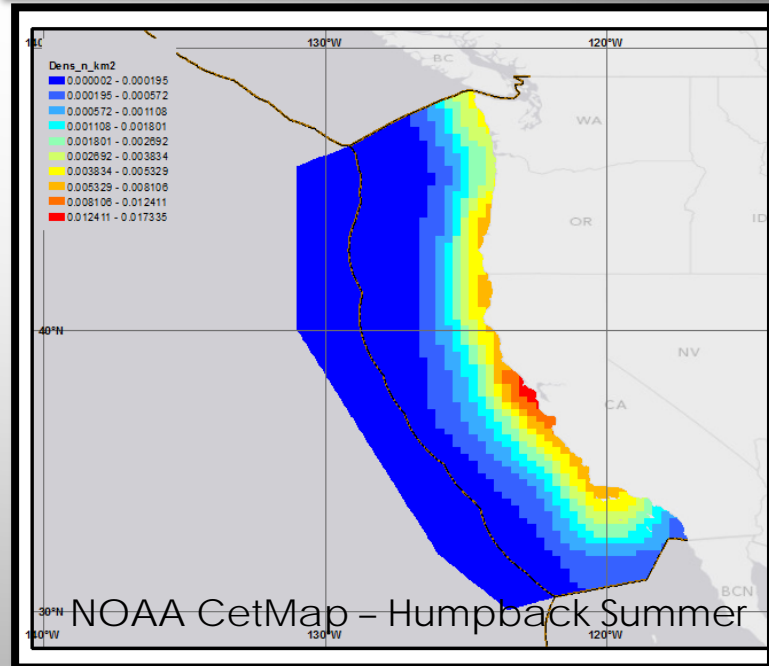
## Evaluating Risk

- Vessel Size and Speed
- Species Vulnerability



## Evaluating Risk

- Displacement
- Location, Duration and Timing
- Species Reaction



- Unlikely Interactions
- Potential Interactions
- Species to Watch





# Greg Sanders

Wildlife Biologist

Bureau of Ocean Energy Management

Pacific OCS Region

805-384-6396

[greg.sanders@boem.gov](mailto:greg.sanders@boem.gov)



[www.boem.gov](http://www.boem.gov)

