

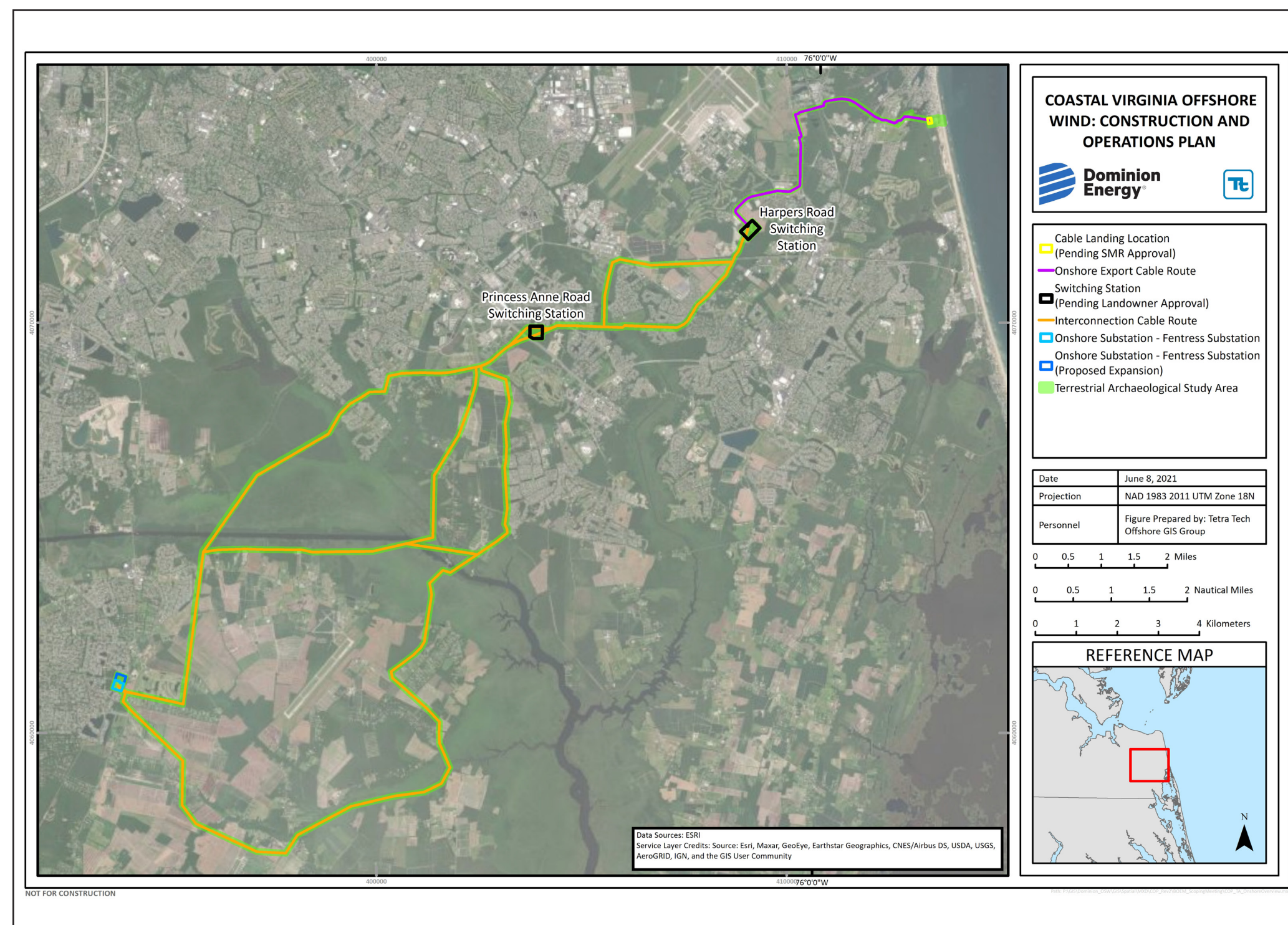
CVOW-C Offshore Wind Farm

# What is the Area of Potential Effect (APE) for the CVOW-C Wind Farm Project?

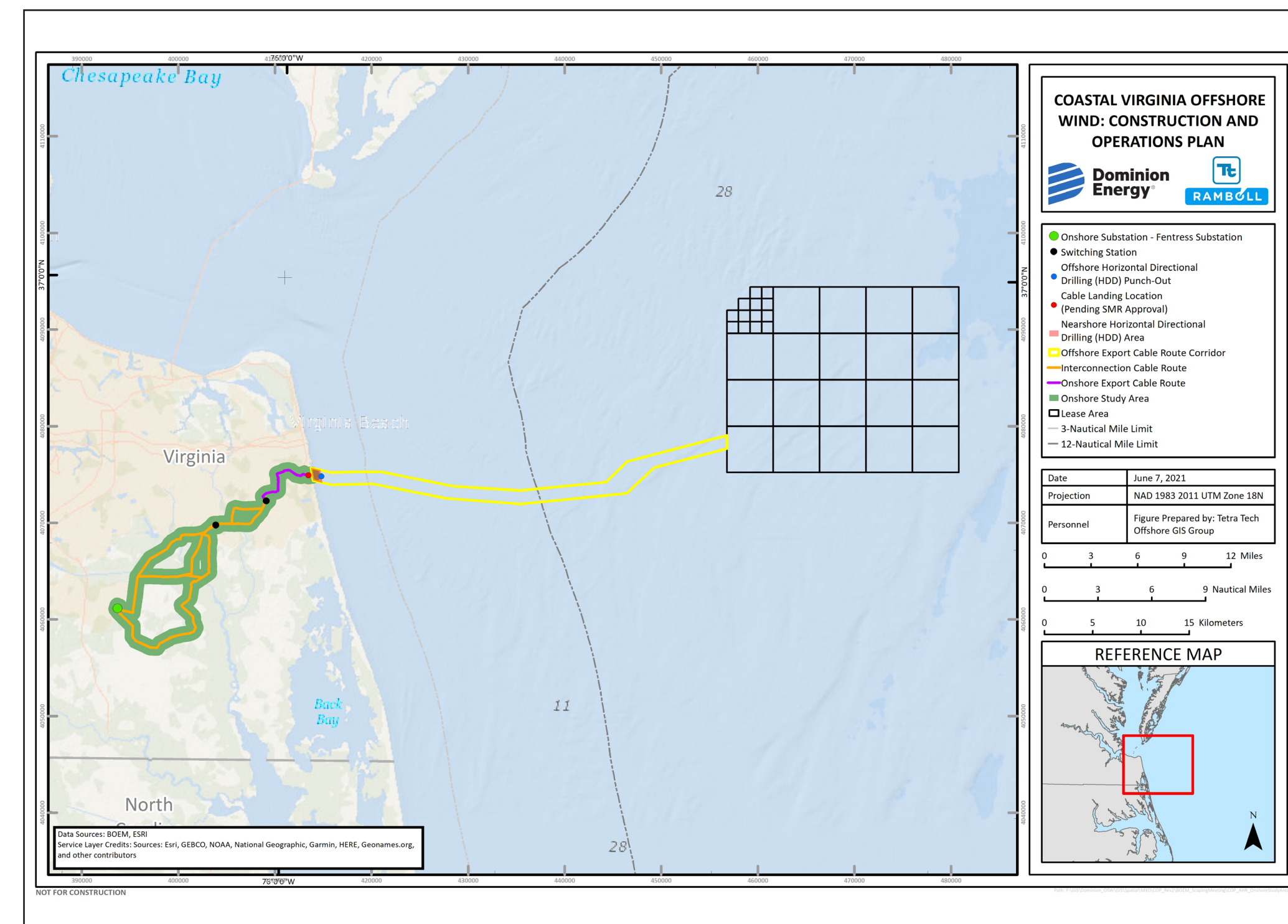
BOEM needs your input: do you know of historic properties (Buildings, Structures, Objects, Archaeological Sites, Districts, Landscapes, Traditional Cultural Properties) that may be affected by this project?

This project has three categories of APE:

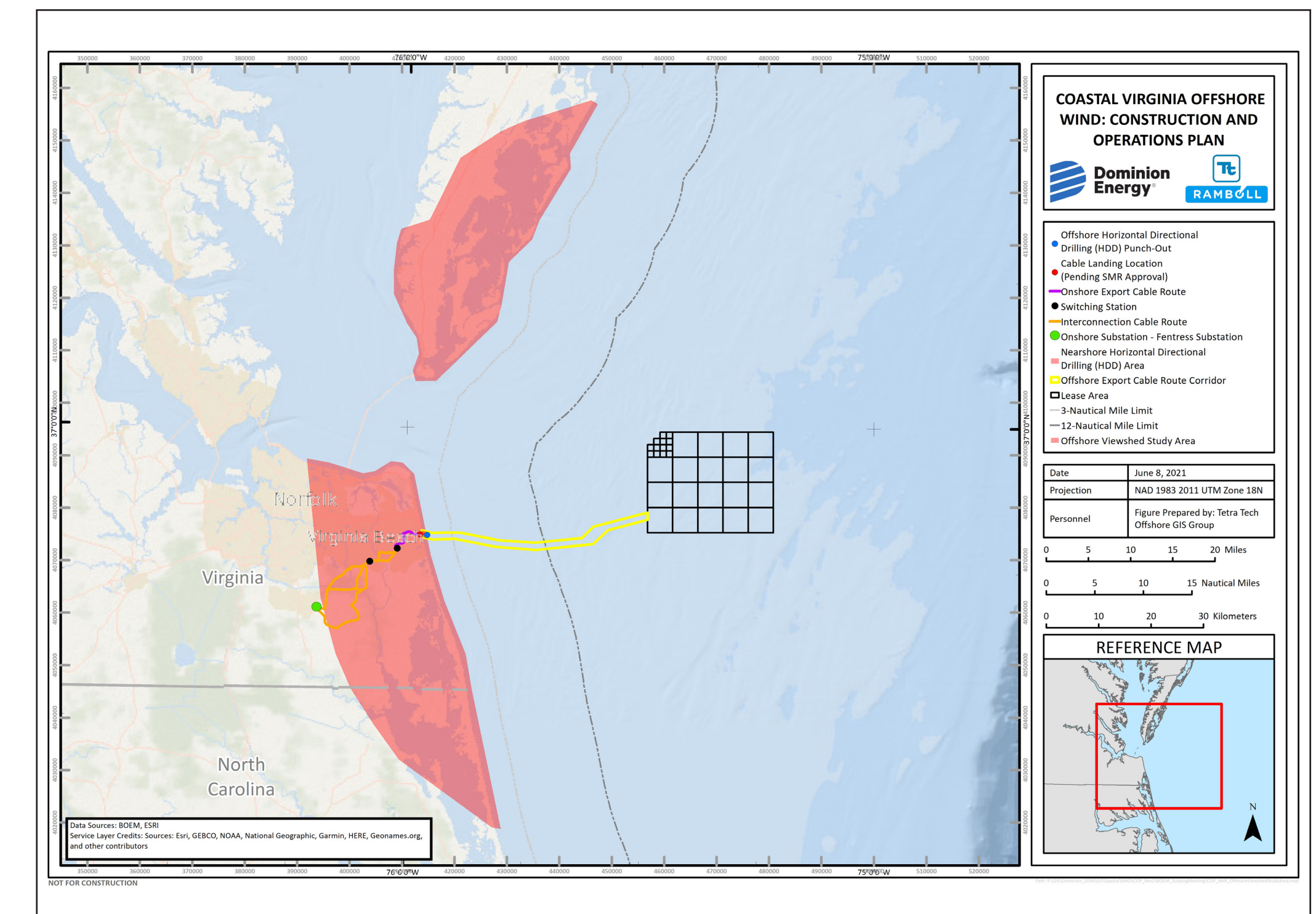
- 1. Terrestrial:** the depth and breadth of terrestrial areas potentially impacted by any ground-disturbing activities.
- 2. Marine:** the depth and breadth of the seabed potentially impacted by any bottom-disturbing activities.
- 3. Visual:** the viewshed from which renewable energy structures, whether located offshore or onshore, would be visible.



Terrestrial Archaeological Resources Study Area



Aboveground Historic Resources Onshore Study Area



Aboveground Historic Resources Offshore Viewshed Study Area