

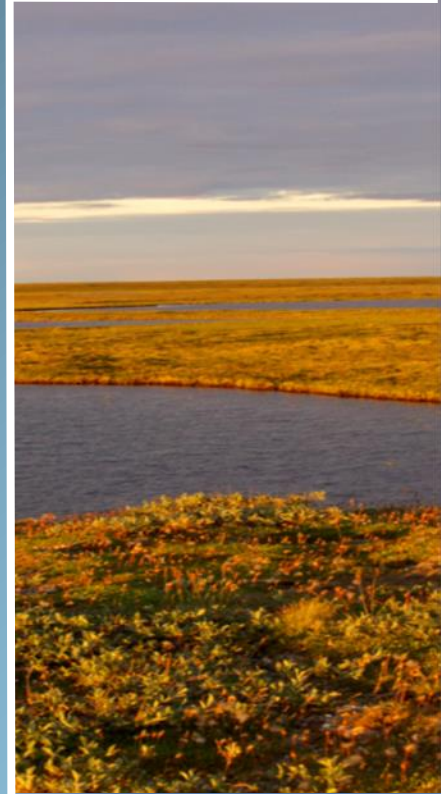
Role of regional studies, environmental assessments, and cumulative effects

An NGO perspective

Tim Fullman, Ph.D.

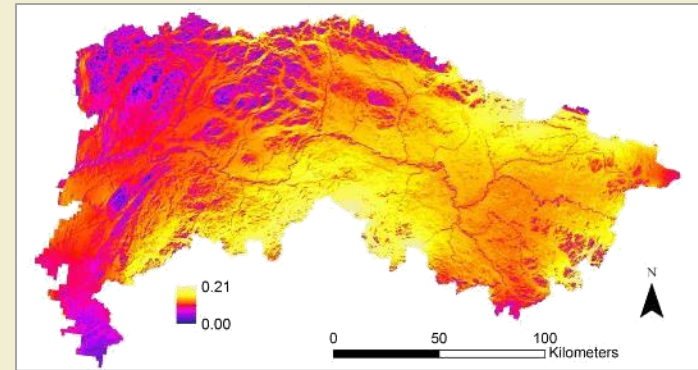
Senior Ecologist, The Wilderness Society, Anchorage, Alaska

October 13, 2017

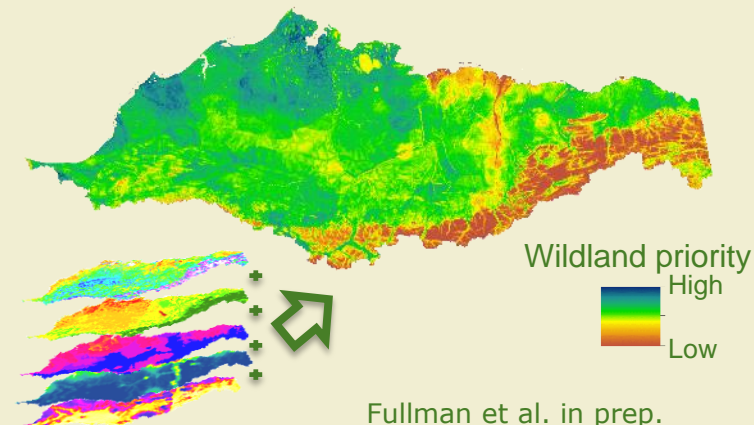


My background

Wildlife ecologist



Fullman et al. 2017 *Movement Ecology*



Regional studies

- Sparse and varying resources require many species to travel long distances to meet their needs



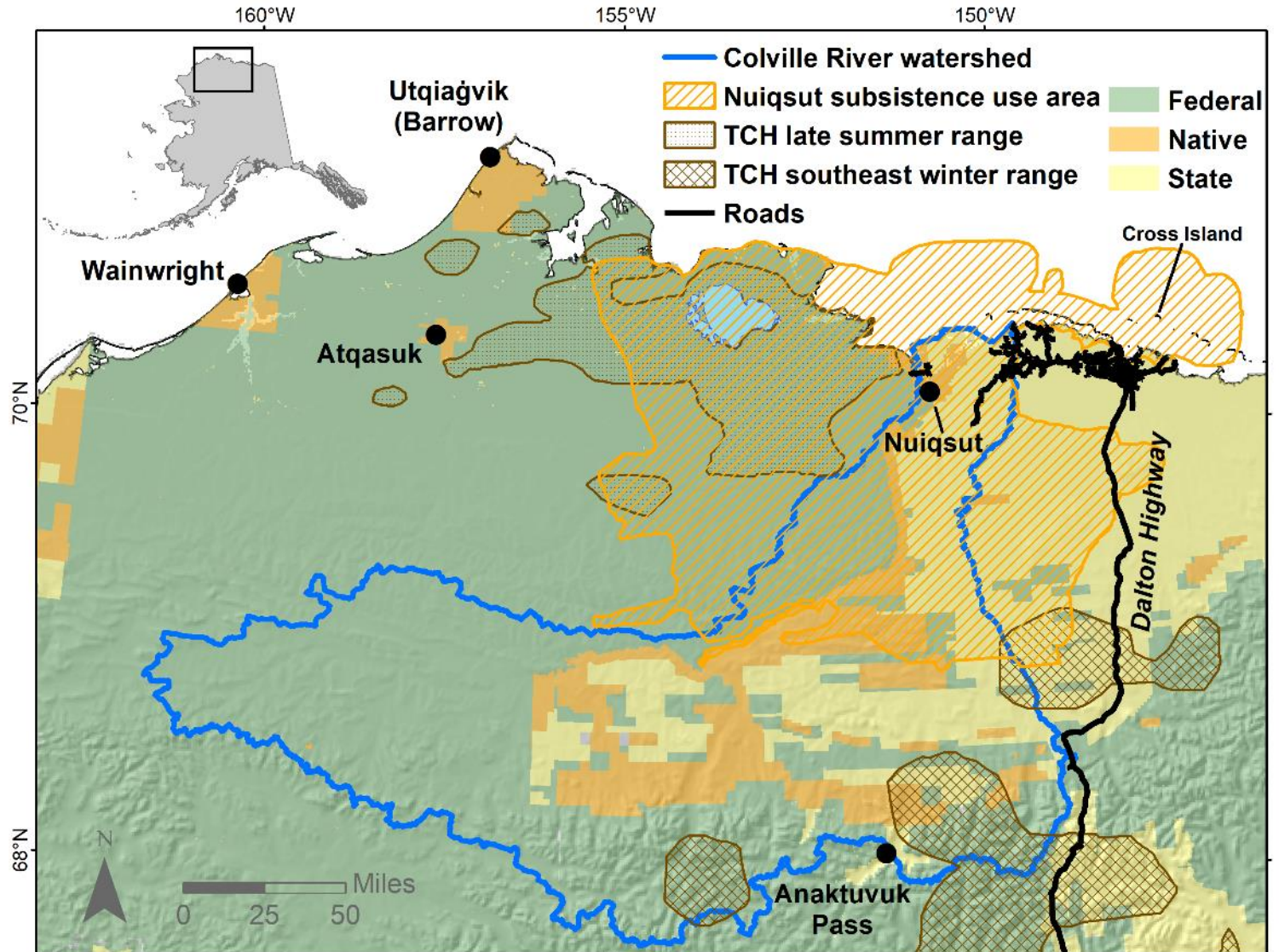
Crossing jurisdictions



Jim M. Goldstein



Peter Mather



Challenges: data availability

- Data often are not as consistent or fine scale as at lower latitudes
- Still is much basic information we do not know
- Environmental studies are needed to provide this information and inform decisions

Broad whitefish (*Coregonus nasus*)



Challenges: data access

- Local-scale studies cannot be combined to provide a regional perspective if data are not made available
 - Leads to redundancies and survey fatigue
- National Environmental Protection Act (NEPA)
 - Giving a voice to a broad array of stakeholders
 - Data used to inform public decisions should be made available to a broad range of stakeholders



Cumulative effects

- Projects with a relatively small footprint can have larger cumulative effects



- Consider facilitative effects of projects



- Greater respect and conversation needed between various stakeholders



Thank you!