

Role of Research in Regulation

Dr. James (Jim) Kendall
Regional Director, Alaska OCS Region
U.S. Department of the Interior
Bureau of Ocean Energy Management



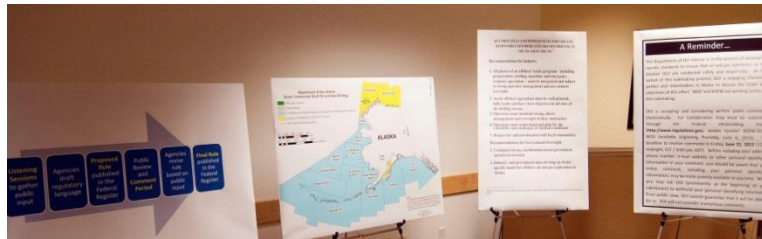
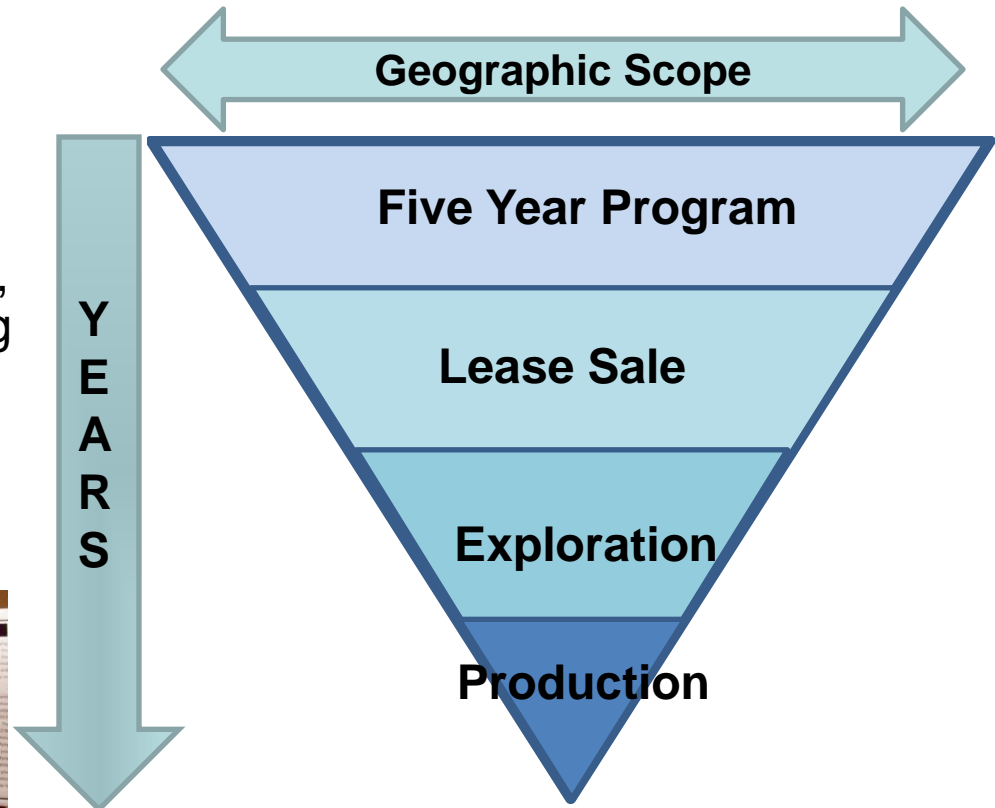
BOEM's Mission:

... to manage development of the United States Outer Continental Shelf energy and mineral resources in an environmentally and economically responsible way.*



Process-Rich Endeavor*

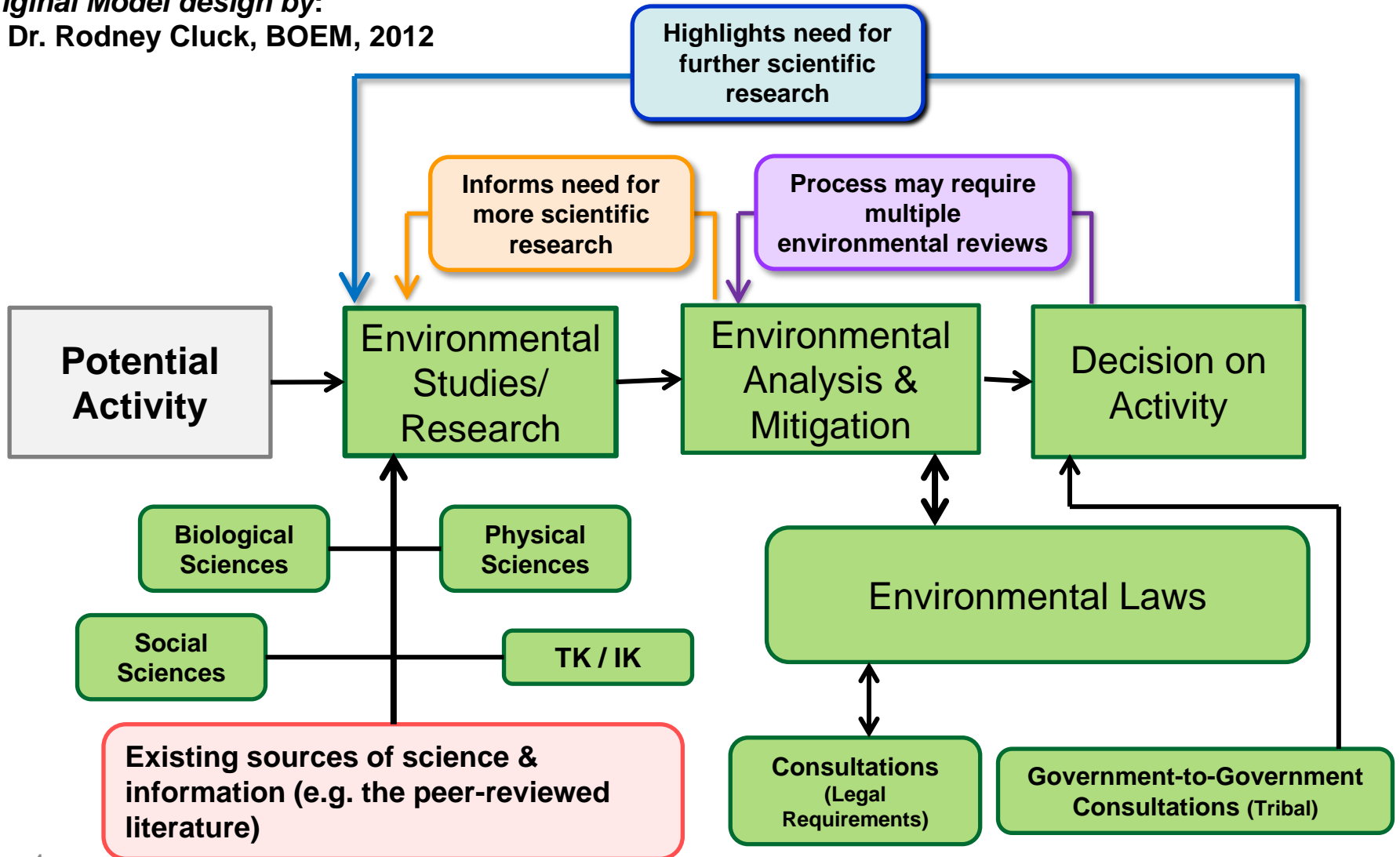
- Engagement is Key – Public, Government, Tribes, & the Industry
- Multiple steps, decision points, & opportunities for input during each phase
- Entire process spans years*



** Must take into account and be adaptable in terms of incorporating new information, new technologies, and changes in economics and environment.*



Original Model design by:
Dr. Rodney Cluck, BOEM, 2012



Many Considerations



**Outer Continental Shelf
Lands Act**

Oil Pollution Act of 1990



**Marine Mammal
Protection Act**

**National Environmental
Policy Act**

**Endangered
Species Act**

**Migratory Bird
Treaty Act**

**National Historic
Preservation Act**

**Magnuson-
Stevens Fishery
Conservation &
Management Act**

**Coastal Zone
Management
Act**

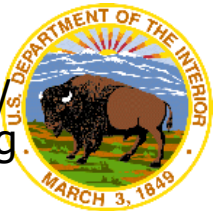
**Clean Air
Act**

**Executive
and
Secretarial
Orders**

**Clean
Water Act**



- Outer Continental Shelf Lands Act and Oil Pollution Act** → Regulates prelease & post-lease activities on the OCS
- National Environmental Policy Act** → Environmental analysis and review during project planning
- Federal Water Pollution Control Act (Clean Water Act)** → Regulates discharges into marine waters
- Clean Air Act** → Regulates air emissions
- Coastal Zone Management Act** → Assures compliance with state coastal area protection plans (Alaska does not have CMP)
- Endangered Species Act** → Protects Threatened & Endangered Species and related Critical Habitats
- Marine Mammal Protection Act** → Protects Marine Mammals
- Magnuson-Stevens Fishery Conservation & Management Act** → Protects Essential Fish Habitat
- National Historic Preservation Act** → Protects historic sites and cultural/archaeological resources, including those on the ocean floor



Applied research helps us to predict environmental impacts and monitor for changes over time

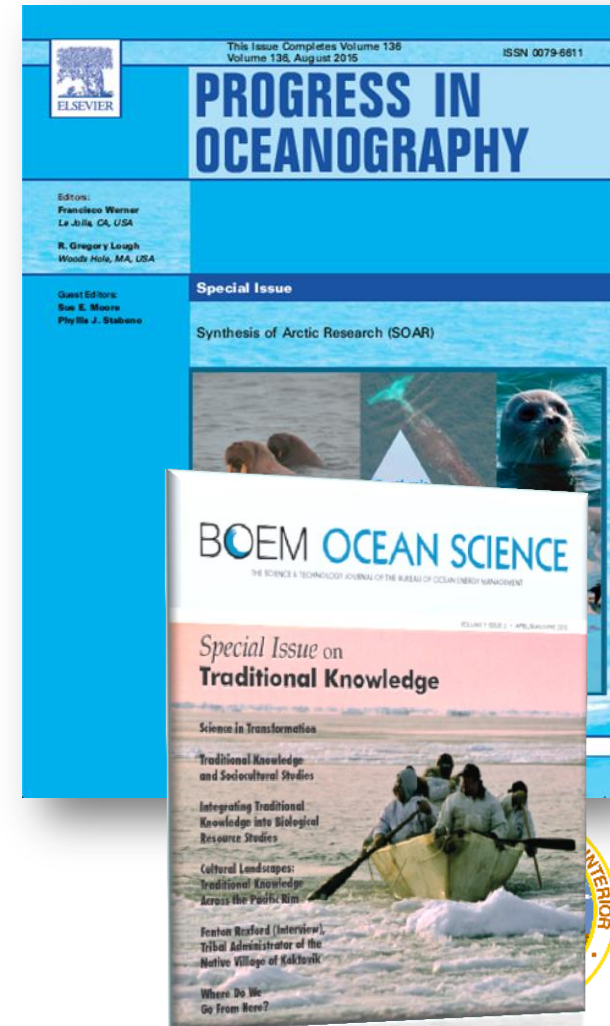
~\$500M in Studies Funded

- More Than 1,000 Reports & Published Articles

Currently ~\$12M+ per Year with an Additional \$5M in Leveraged Funds

2007 – Present (Arctic Focus):

- Marine Mammals
- Ecosystem Monitoring
- Physical, Biological, & Chemical Oceanography
- Fate and Effects Modeling
- Atmospheric Science
- Social Systems

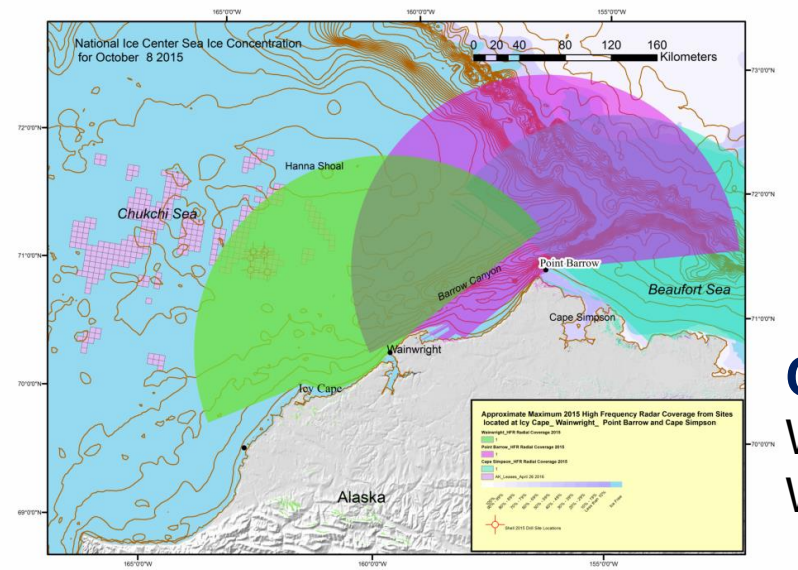
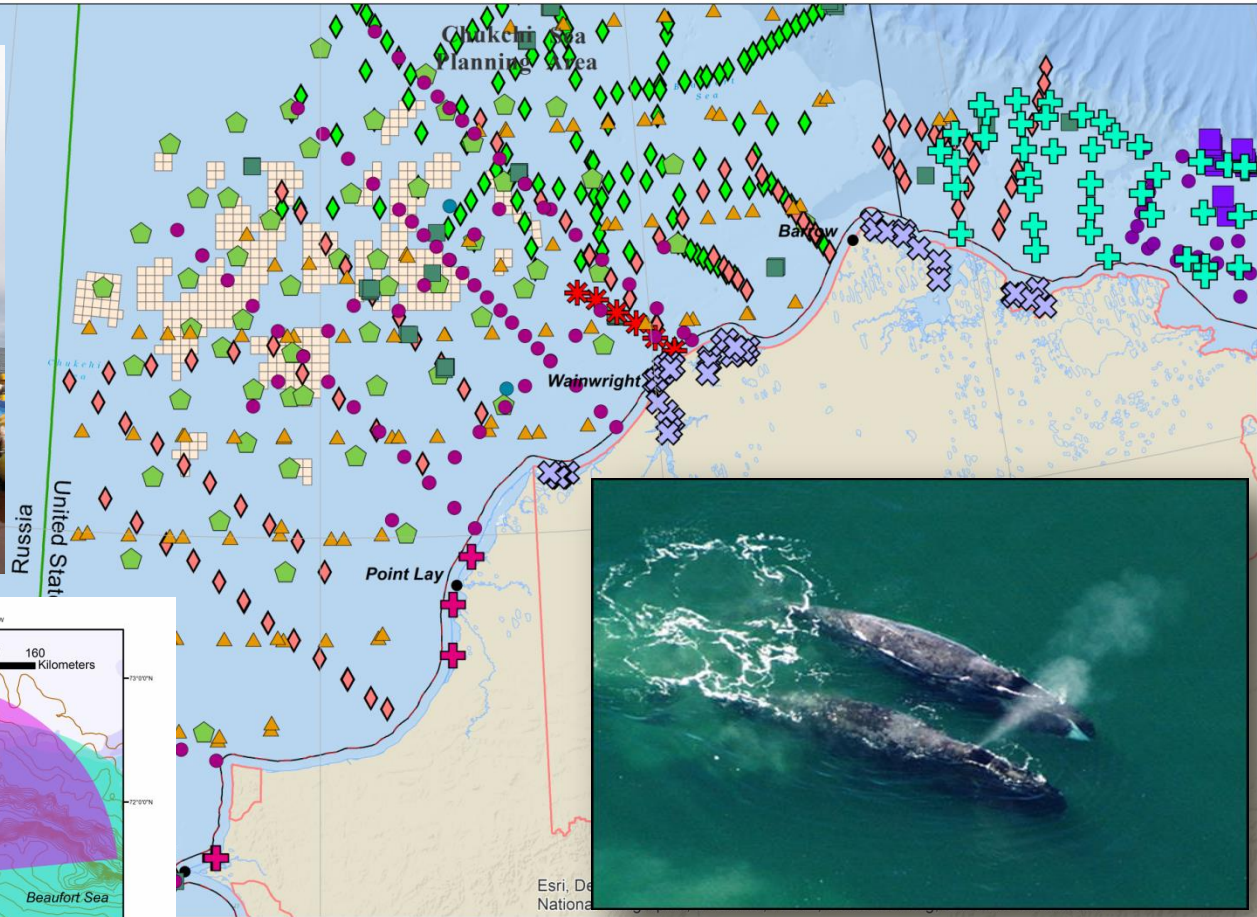


“A body of evolving practical knowledge based on observations and personal experience of local residents over an extensive, multi-generational time period” BOEM Ocean Science Journal, 2012



BOEM actively seeks TK/IK to complement its science and to further support its decision-making process (i.e. *better decisions*).





Communities Participate in Research

Whale tagging performed by Whaling Captains with ADF&G



The *Arctic Air Quality Assessment Modeling* study and Implementing BOEM's Air Quality Regulatory Responsibilities

- The *Consolidated Appropriations Act, 2012*, amended the Clean Air Act to transfer regulatory authority for air emissions on the OCS off Alaska's north coast, including the Chukchi and Beaufort seas, from the EPA to the Department of the Interior.
- In 2013, BOEM initiated the \$1.76 million *Arctic Air Quality Assessment Modeling* study to develop information needed to guide BOEM's implementation of this authority.
- Specifically, this project is evaluating existing formulas for exemption thresholds for air emissions on the OCS. Results from this evaluation will inform BOEM as to whether these formulas remain protective of the environment.



Strategic Priorities

- Advancing our security interests – energy resources are a core component of our National Security;
- Responsible environmental stewardship; and
- Strengthening international cooperation.

Efficiency through Coordination

- Promoting responsible, efficient, and effective processing of energy-related authorizations, permits, regulations, & agreements.

International/Pan-Arctic

- Safety & Stewardship
- Improving the economic & living conditions of our citizens who call the Arctic home.



BOEM

BUREAU OF OCEAN ENERGY MANAGEMENT

