

New Jersey Offshore Wind

September 2024



**New Jersey Board of Public Utilities & New Jersey
Department of Environmental Protection**
Presented by
Kevin Dillon & Colleen Brust

New Jersey Offshore Wind Goals



- 11,000 MW by 2040
- Minimize environmental and fisheries impacts
- Establish an offshore wind supply chain to support New Jersey and the East Coast
- Develop coordinated transmission solutions
- Minimize cost and risk to ratepayers

Background on New Jersey Offshore Wind

- NJ OWEDA: P.L. 2010, c. 57
 - *The **Offshore Wind Economic Development Act (OWEDA)** directs the NJBPU to establish a program for **Offshore Wind Renewable Energy Certificates (ORECs)** to incentivize development of offshore wind facilities*
- N.J.A.C. 14:8-6
 - *Describes requirements for **Qualified Offshore Wind Projects, including OREC Funding Mechanism***
- Executive Wind Goals
 - ***Executive Order No. 8**, signed on January 31, 2018, sets goal of 3,500 MW of OSW capacity by 2030*
 - ***Executive Order No. 92**, signed on November 19, 2019, sets an increased goal of 7,500 MW of OSW capacity by 2035*
 - ***Executive Order No. 307**, signed on September 21, 2022, sets an increased goal of 11,000 MW of OSW capacity by 2040*

New Jersey Offshore Wind Solicitations

Current OSW Solicitation Schedule

Project	Capacity Target/Award (MW)	Issue Date	Submittal Date	Award Date	Estimated COD
Atlantic Shores	1,510	Q3 2020	Q4 2020	Q2 2021	2028
Attentive 2	1,342	Q1 2023	Q3 2023	Q1 2024	2031
Leading Light Wind	2,400				2031-32
Solicitation 4	1,200 – 4,000	Q2 2024	Q3 2024	Q4 2024	2032
Solicitation 5	1,200 – 4,000	Q2 2025	Q3 2025	Q4 2025	2034
Solicitation 6	1,200 – 4,000	Q2 2027	Q3 2027	Q1 2028	2035
Solicitation 7	1,200 – 4,000	Q2 2029	Q3 2029	Q1 2030	2037

- Current Goal = 11,000 MW
- Current Awarded Capacity = 5,252 MW



Second OSW Strategic Plan



www.njcleanenergy.com/renewable-energy/programs/nj-offshore-wind/strategic-plan

In accordance with **Executive Order No. 8**, NJBPU published the **First Offshore Wind Strategic Plan** in September 2020, which served as the roadmap for meeting the State's then goal of producing **7,500 MW** of OSW power by **2035**.

The **Second Offshore Wind Strategic Plan (OSWSP2)** commenced in September 2023, and will serve as the new roadmap for meeting the State's goal of producing **11,000 MW** of OSW power by **2040**.

OSWSP2 Key Focus Areas:

- Supply Chain, Infrastructure, & Workforce Development
- Energy Markets & Transmission
- Environmental & Fisheries Protection
- Stakeholder Engagement
- Minimize Cost to Ratepayers

Offshore Wind Transmission: State Agreement Approach (SAA)



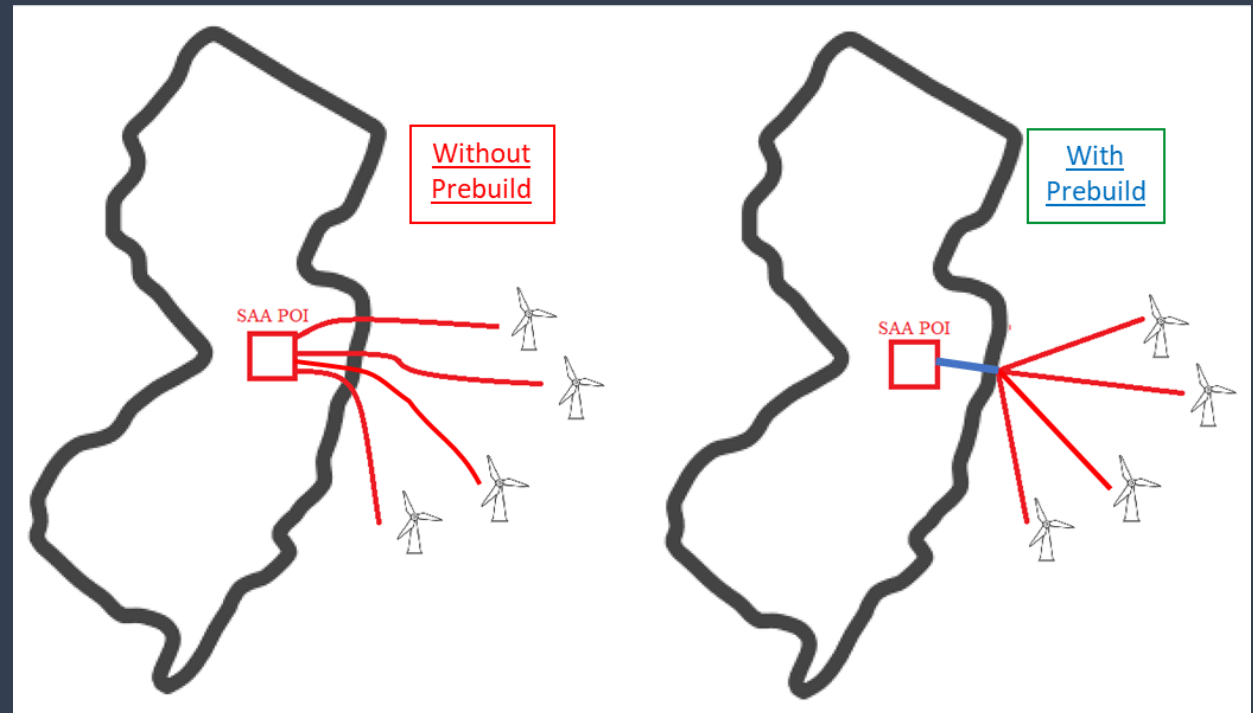
- The SAA allows a state to work with PJM to develop coordinated transmission solutions for public policy projects
- In October 2022, the Board awarded the first SAA Project - Larrabee Tri-Collector Solution:
 - Creates a new substation and upgrades the existing grid to enable multiple wind projects to interconnect
 - Minimizes environmental and community impacts
 - Lowers costs for New Jersey ratepayers

Prebuild Infrastructure (PBI)

- BPU-run solicitation
- Consolidates onshore cable routes to minimize disruptions:
 - Environmental impacts
 - Community impacts
 - Risk of delays
- Builds the unenergized infrastructure needed to carry power lines from the shore to the Larrabee Tri-collector
- Enhances competition to reduce cost to ratepayers

Solicitation Schedule

- November 17, 2023 – Solicitation Opened
- April 3, 2024 – Submissions Due
- Fourth Quarter, 2024 – Board Decision



New Jersey Offshore Wind Fourth Solicitation

Solicitation Goals

- Capacity Target: 1,200 – 4,000 MW
- Combat the threat of global climate change
- Encourage competition
- Promote economic development and jobs creation
- Minimize environmental and fisheries impacts
- Achieve these goals at the lowest reasonable cost and lowest risk to New Jersey ratepayers

Fourth Solicitation Schedule

Event	Date
Solicitation Window Opens	2 nd Quarter 2024
Applications Due	3 rd Quarter 2024
Board Decision	4 th Quarter 2024



New Jersey's Diverse Marine Resources

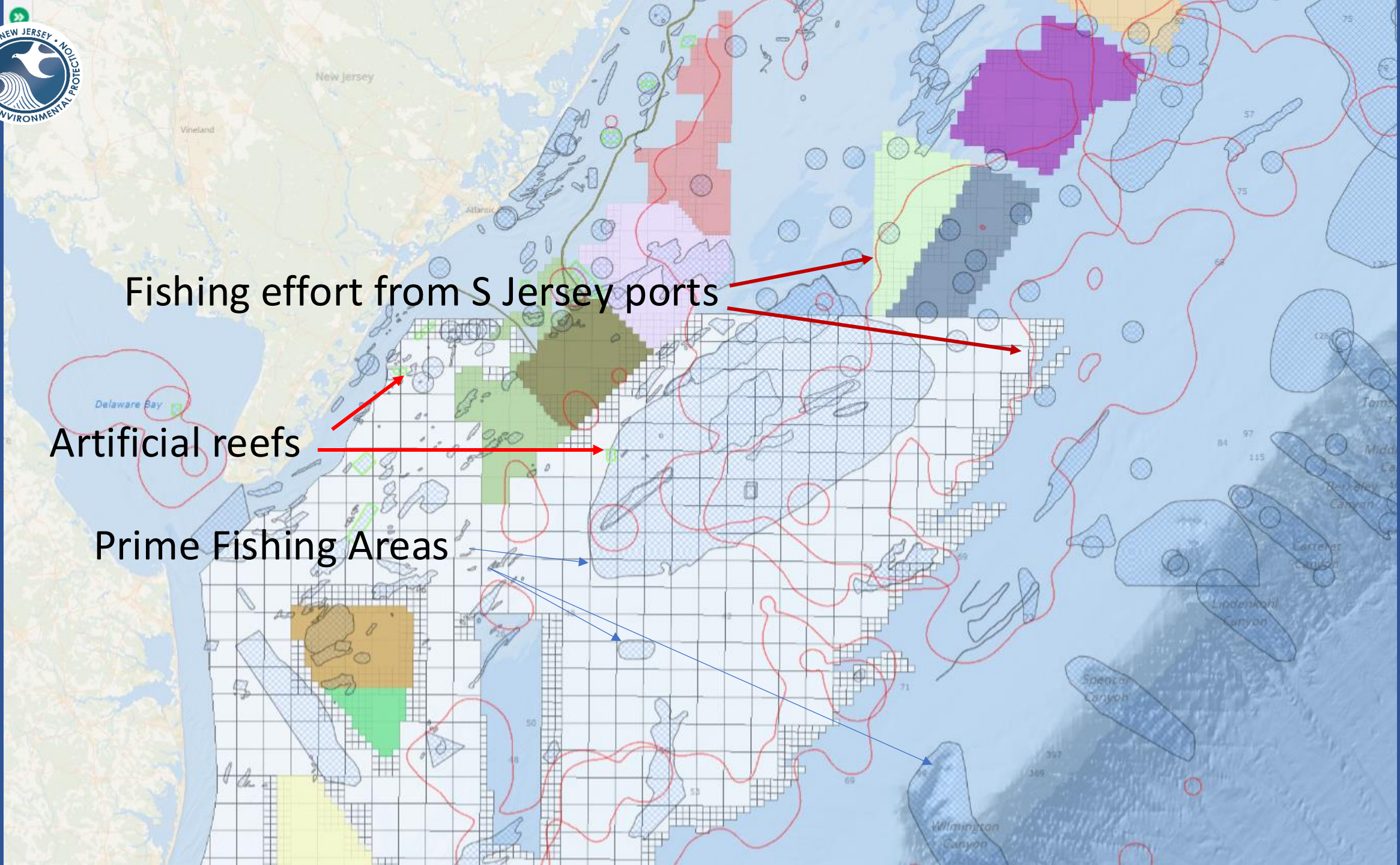
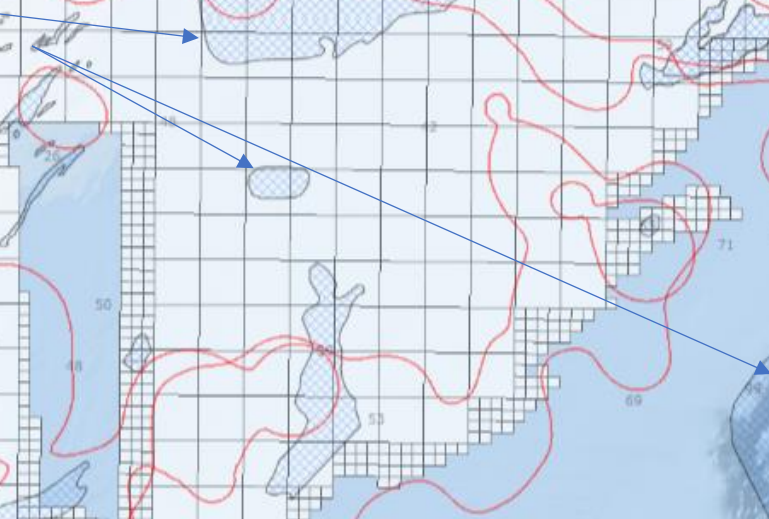


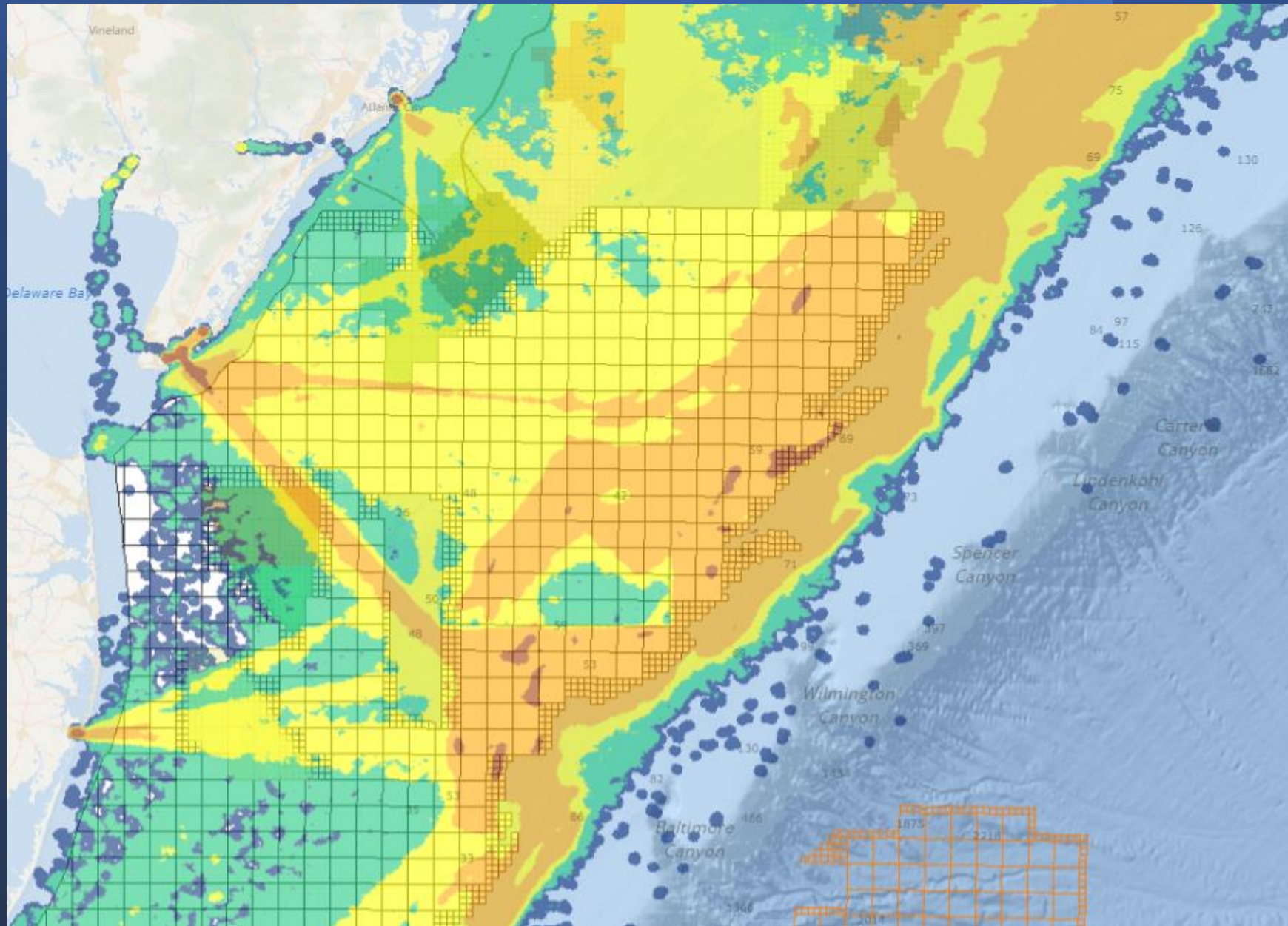


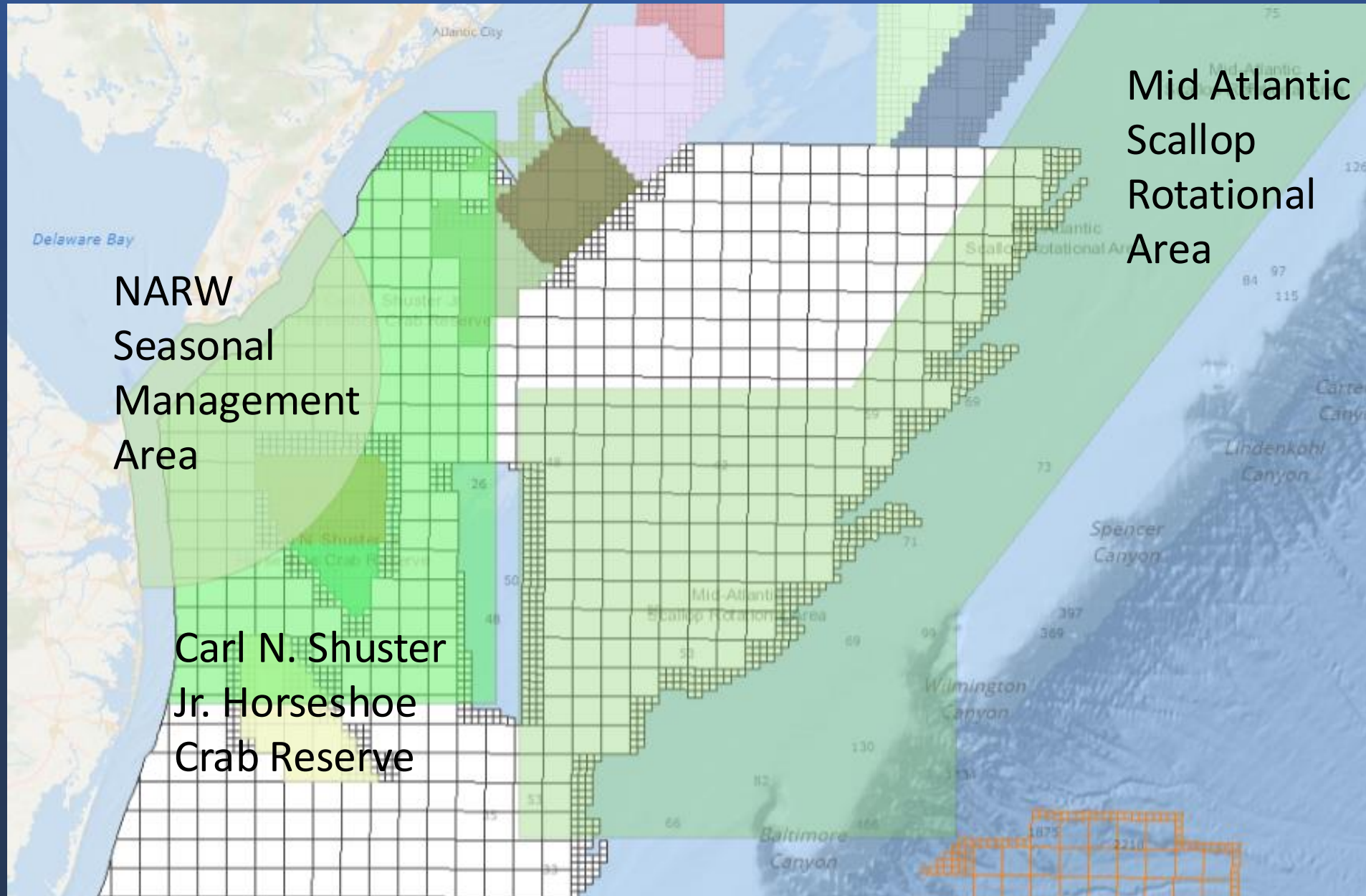
Fishing effort from S Jersey ports

Artificial reefs

Prime Fishing Areas



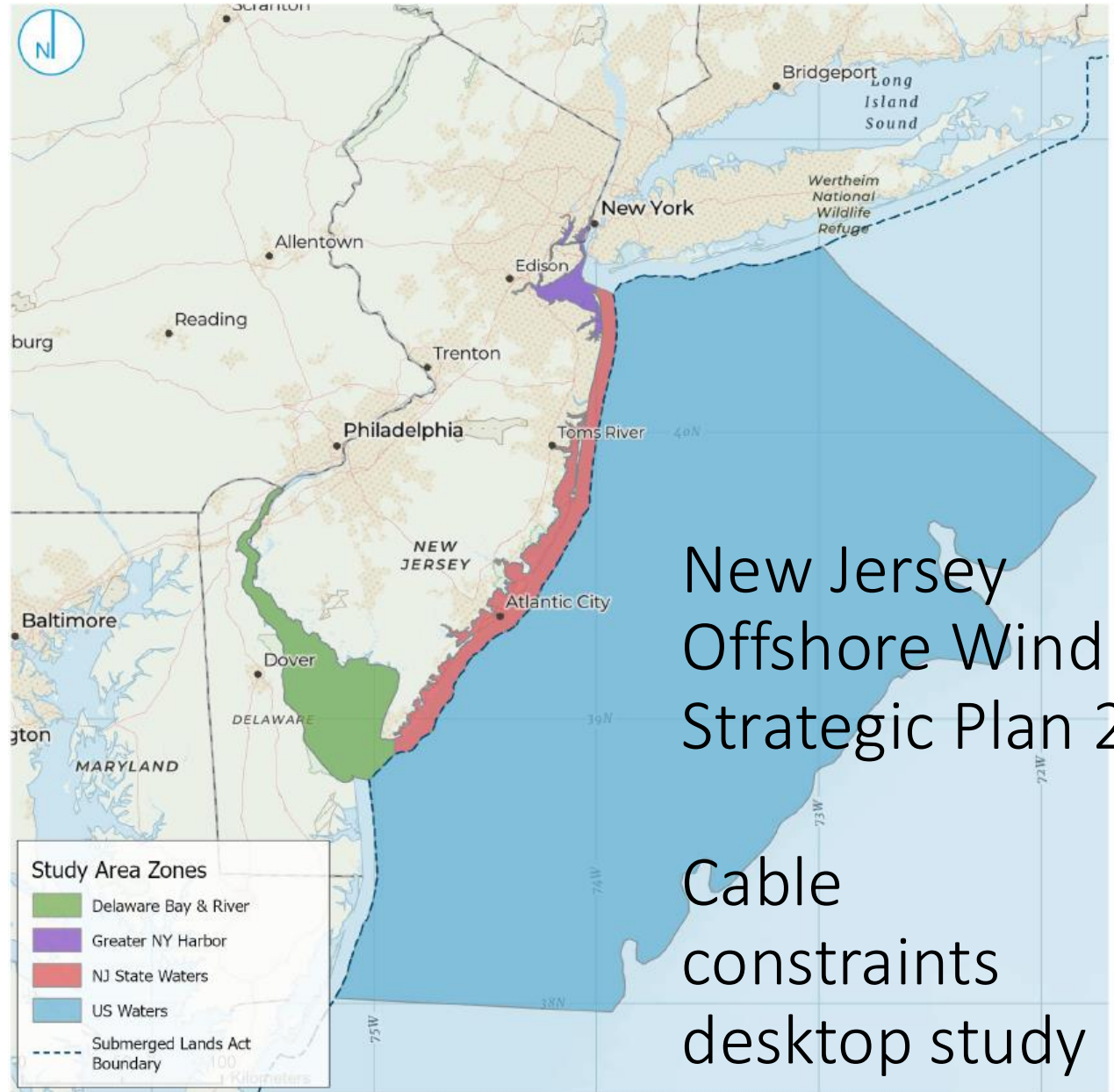




NARW
Seasonal
Management
Area

Carl N. Shuster
Jr. Horseshoe
Crab Reserve

Mid Atlantic
Scallop
Rotational
Area



New Jersey
Offshore Wind
Strategic Plan 2

Cable
constraints
desktop study

Lessons Learned



- Use all available information in the spatial planning
- Continue to inform all stakeholders about which type of comments are effective at which stage of winnowing
- Meet directly with surfclam and scallop industry
- Be proactive about addressing misinformation
- Increased Public Engagement
- Need for advanced planning to projects identifying interconnection points
 - Landfall Points
 - Offshore Transmission Congestion



Questions

**Division of Clean Energy
New Jersey Board of Public Utilities**

Osw.stakeholder@bpu.nj.gov
www.nj.gov/bpu

**New Jersey
Department of Environmental Protection**

Offshore Wind
<https://dep.nj.gov/offshorewind/>

