

Base Photographic Documentation

Date (MM/DD/YYYY): 1/27/2023
 Time (24hr): 13:47
 GPS Longitude: -73.995185
 GPS Latitude: 40.23626594
 Viewpoint Elevation (ft): 22.387
 Camera Height (ft): 5.41
 Camera Heading (°): 99
 Camera Direction: E

Camera Information

Camera Make & Model: Canon EOS 5DS R
 Camera Sensor Size: 36mm x 24mm
 Lens Make & Model: Sigma F1.4 DG HSM A018
 Lens Focal Length: 20mm
 Field of View: 65.47° (H) / 46.397° (V)

Sun And Weather Information

Sun Azimuth: 206.3
 Sun Elevation: 27.11
 Lighting Angle (On Turbines): Top-Right Lit
 Weather Conditions: Overcast
 Maximum Visibility (NM): 25.64
 Temperature (°F): 42
 Temperature (°C): 5.56
 Humidity (%): 43

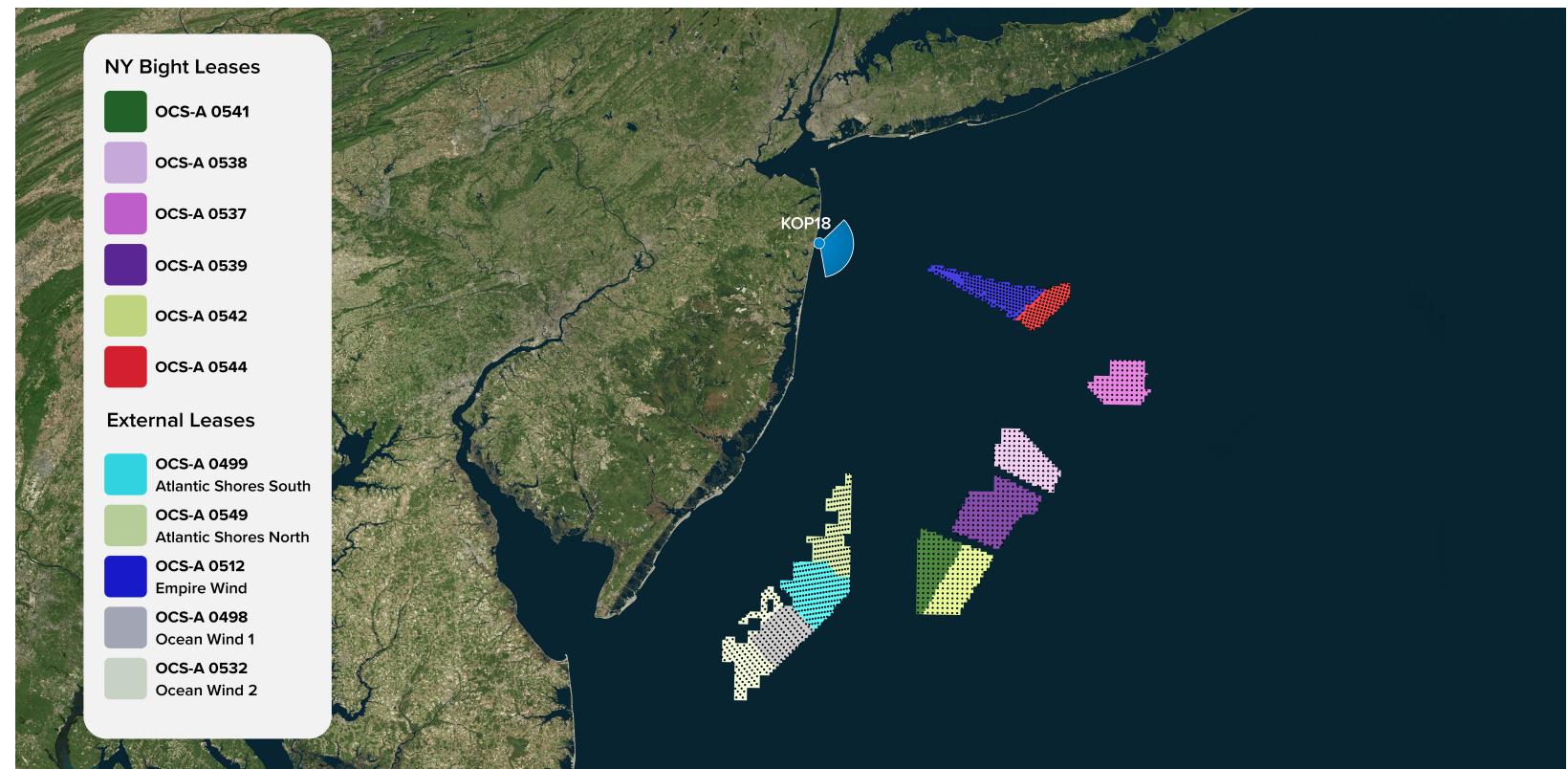
Viewing Instructions

11 x 17 inch Printed Display: Distance is 19.7 inches (500mm)
 On-Screen Display: Distance is 19.7 inches (500mm)

Image Preview



Context Map



● Key Observation Point (KOP) ● Turbines

NY Bight Turbine Information - 1312ft (399.9m)

Lease Area	Distance to Nearest Turbine in Miles (km)	Turbines Visible		
		Blade Tip	Hub	Mid Tower
Total	-	111	0	0
OCS-A 0544	42.53 (68.44)	80	0	0
OCS-A 0537	61.24 (98.56)	0	0	0
OCS-A 0538	48.14 (77.48)	31	0	0
OCS-A 0539	53.26 (85.71)	0	0	0
OCS-A 0541	55.88 (89.93)	0	0	0
OCS-A 0542	63.38 (102.01)	0	0	0

Blade tip counts are a summation of only blade tips visible, only hubs visible, and mid-towers visible. Hub counts are a summation of only hubs visible and mid towers visible.

Turbine Visibility	Turbine Visibility & Percentage
Amount of Nearest Turbine Hidden in ft (m)	867.6 (264.4)
Percent of Nearest Turbine Hidden (%)	66.1%
Amount of Nearest Turbine Visible in ft (m)	135.5 (444.4)
Percent of Nearest Turbine Visible (%)	33.9%

NY Bight Turbine Specifications

Turbine Components	Measurements ft (m)
Rotor Diameter in ft (m)	1212 (369.4)
Total Height to Tip of Blade in ft (m)	1312 (399.9)
Hub Height in ft (m)	706 (215.2)
Support Structure Height in ft (m)	25 (7.6)
Service Platform in ft (m)	100 (30.5) x 200 (61.0) Steel Platform above MWS
Total Number of Turbines	1481

**NY Bight Turbine Information - 853ft (260m)
No Simulation**

Lease Area	Distance to Nearest Turbine in Miles (km)	Turbines Visible		
		Blade Tip	Hub	Mid Tower
Total	-	0	0	0
OCS-A 0544	89.80 (144.51)	0	0	0
OCS-A 0537	94.48 (152.05)	0	0	0
OCS-A 0538	67.37 (108.42)	0	0	0
OCS-A 0539	53.52 (86.14)	0	0	0
OCS-A 0541	43.80 (70.49)	0	0	0
OCS-A 0542	46.66 (75.10)	0	0	0

Blade tip counts are a summation of only blade tips visible, only hubs visible, and mid-towers visible. Hub counts are a summation of only hubs visible and mid towers visible.

Turbine Visibility	Turbine Visibility & Percentage
Amount of Nearest Turbine Hidden in ft (m)	853 (260)
Percent of Nearest Turbine Hidden (%)	100%
Amount of Nearest Turbine Visible in ft (m)	0.0 (0.0)
Percent of Nearest Turbine Visible (%)	0.0%

NY Bight Turbine Specifications

Turbine Components	Measurements ft (m)
Rotor Diameter in ft (m)	722 (220.1)
Total Height to Tip of Blade in ft (m)	853 (260)
Hub Height in ft (m)	361 (110)
Support Structure Height in ft (m)	25 (7.6)
Service Platform in ft (m)	100 (30.5) x 200 (61.0) Steel Platform above MWS
Total Number of Turbines	1481

**External Turbine Information
No Simulation**

Lease Area	Distance to Nearest Turbine in Miles (km)	Turbines Visible		
		Blade Tip	Hub	Mid Tower
Total	-	187	54	N/A
OCS-A 0499	N/A	0	0	N/A
OCS-A 0549	39.0 (62.8)	30	0	N/A
OCS-A 0512	24.4 (39.3)	157	54	N/A
OCS-A 0498	N/A	0	0	N/A
OCS-A 0532	N/A	0	0	N/A

**Cumulative Turbine Visibility
(Total WTG Count for NY Bight + External Leases)**

1312ft (399.9m)			853ft (260m) - No Simulation		
Blade Tip	Hub	Mid Tower	Blade Tip	Hub	Mid Tower
298	54	0	187	54	0

The cumulative mid tower counts for both turbine heights are conservative values due to having no mid tower data for the external leases.

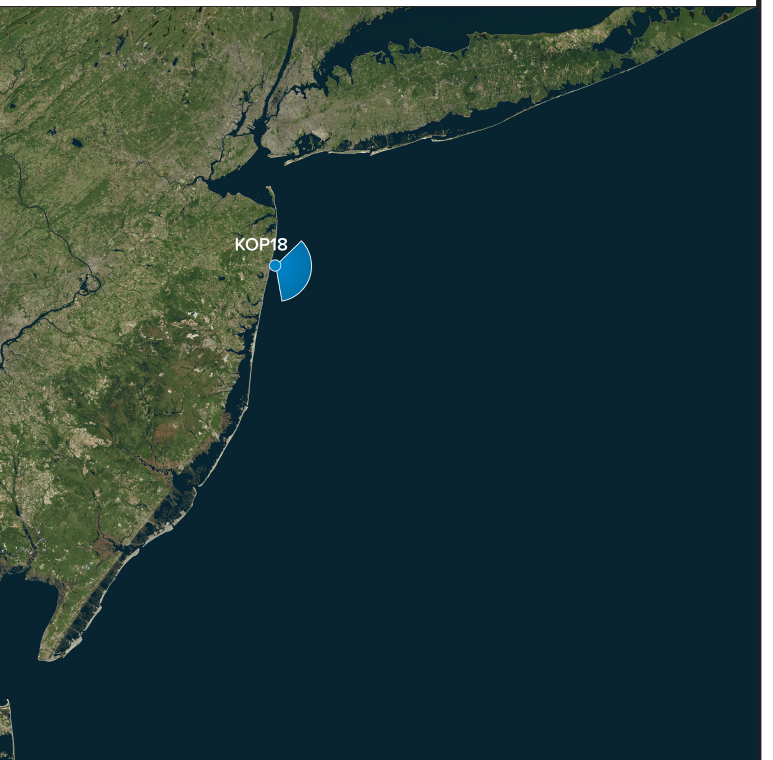
External Turbine Specifications

Lease Area	Rotor Diameter in ft (m)	Total Height to Tip of Blade in ft (m)	Hub Height in ft (m)	Support Structure Height in ft (m)
OCS-A 0499	918.6 (279.9)	1049 (319.7)	577 (176)	25 (7.6)
OCS-A 0549	918.6 (279.9)	1049 (319.7)	577 (176)	25 (7.6)
OCS-A 0512	853 (259.9)	951 (290)	525 (160)	25 (7.6)
OCS-A 0498	788 (240.1)	906 (276)	512 (156)	25 (7.6)
OCS-A 0532	788 (240.1)	906 (276)	512 (156)	25 (7.6)



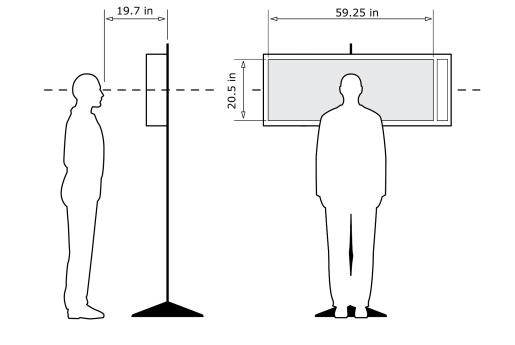
KOP 18, Allenhurst, Late-Noon, Heading 99° - Existing View

For on-screen display:
 Scale bar to be 4 inches wide
 Viewing distance 19.7 inches



Latitude: 40.23626594
 Longitude: -73.995185
 Elevation of Viewpoint Position: 22.387
 Height of Camera Above Ground: 5.41
 Date of Photography: 1/27/2023 at 13:47
 Horizontal Field of View: 124°
 Vertical Field of View: 55°

CORRECT VIEWING OF TRUEVIEW™ PHOTO SIMULATIONS



NOTES:
 Viewpoint locations have been precision surveyed by
New York City Land Surveyors PC
 63 Montgomery Avenue
 Staten Island NY 10301
 Heights are above mean sea level.
 Structure design and placement are subject to final engineering.
 No part of this photo simulation shall be altered in any way.

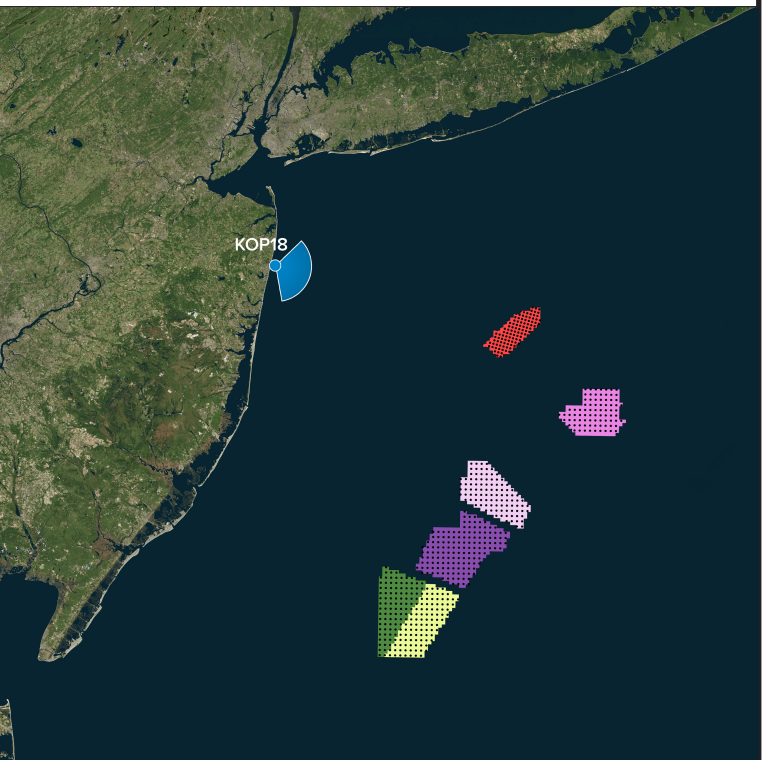
Photo Simulation Created Using
 TrueView™ Technology
 (Patent No.: US 6,184,906 B2)
 Provided by

1/27/2023 11:13:47 - KOP18



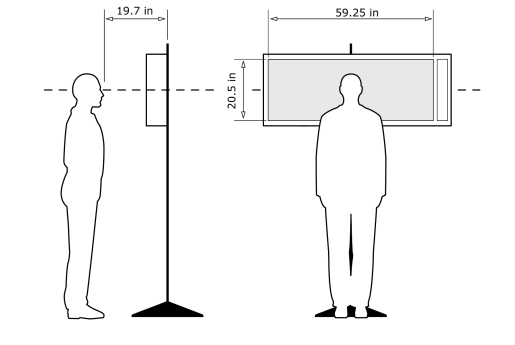
KOP 18, Allenhurst, Late-Noon, Heading 99° - Proposed View - NY Bight Leases (1312ft) - Predicted Visibility

For on-screen display:
 Scale bar to be 4 inches wide
 Viewing distance 19.7 inches



Latitude: 40.23626594
 Longitude: -73.995185
 Elevation of Viewpoint Position: 22.387
 Height of Camera Above Ground: 5.41
 Date of Photography: 1/27/2023 at 13:47
 Horizontal Field of View: 124°
 Vertical Field of View: 95°
 Nearest Turbine: 42.5mi (68.4km) (OCS-A 0544)
 Furthest Visible Turbine: 50.8mi (81.8km) (OCS-A 0538)
 Horizontal Field of View the Projects Occupy: 48.4°

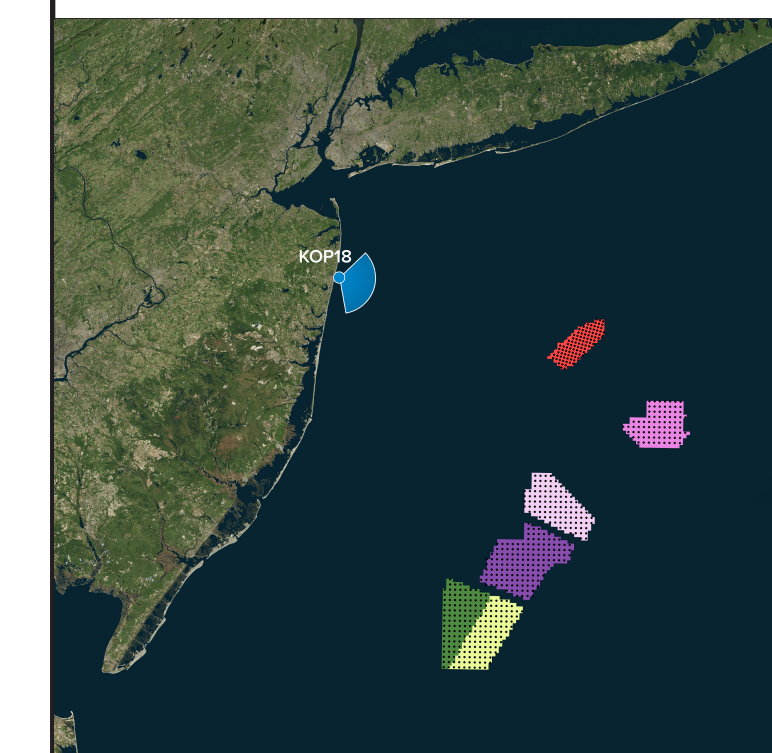
CORRECT VIEWING OF TRUEVIEW™ PHOTO SIMULATIONS



NOTES:
 Viewpoint locations have been precision surveyed by
New York City Land Surveyors PC
 63 Montgomery Avenue
 Staten Island NY 10301
 Heights are above mean sea level.
 Structure design and placement are subject to final engineering.
 No part of this photo simulation shall be altered in any way.

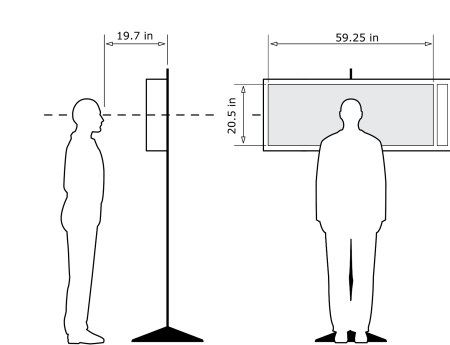
Photo Simulation Created Using
 TrueView™ Technology
 (Patent No.: US 6,184,906 B2)
 Provided by

1/27/2023 11:13:47 - KOP18



Latitude: 40.23626594
 Longitude: -73.995185
 Elevation of Viewpoint Position: 22.387
 Height of Camera Above Ground: 5.41
 Date of Photography: 1/27/2023 at 13:47
 Horizontal Field of View: 124°
 Vertical Field of View: 95°
 Nearest Turbine: 42.5mi (68.4km) (OCS-A 0544)
 Furthest Visible Turbine: 50.8mi (81.8km) (OCS-A 0538)
 Horizontal Field of View the Projects Occupy: 48.4°

CORRECT VIEWING OF TRUEVIEW™ PHOTO SIMULATIONS



NOTES:

Viewpoint locations have been precision surveyed by
New York City Land Surveyors PC
 63 Montgomery Avenue
 Staten Island NY 10301
 Heights are above mean sea level.
 Structure design and placement are subject to final engineering.
 No part of this photo simulation shall be altered in any way.

Photo Simulation Created Using
 TrueView™ Technology
 (Patent No.: US 6,184,906 B2)
 Provided by



KOP 18, Allenhurst, Late-Noon, Heading 99° - Proposed View - NY Bight Leases (1312ft) - Predicted Visibility

For on-screen display:
 Scale bar to be 4 inches wide
 Viewing distance 19.7 inches

1/27/2023 14:13:47 - KOP18

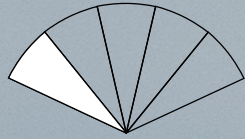
KEY OBSERVATION POINT 18 - ALLENHURST

PROPOSED VIEW - NY BIGHT LEASES (1312 FT) - PREDICTED VISIBILITY - 50MM CROP - (WINTER / LATE-NOON)

Truescape®



1 2 3 4 5



For on-screen display:
Scale bar to be 4 inches wide
Viewing distance 19.7 inches

KEY OBSERVATION POINT 18 - ALLENHURST

PROPOSED VIEW - NY BIGHT LEASES (1312 FT) - PREDICTED VISIBILITY - 50MM CROP - (WINTER / LATE-NOON)

Truescape®



1 2 3 4 5



For on-screen display:
Scale bar to be 4 inches wide
Viewing distance 19.7 inches

KEY OBSERVATION POINT 18 - ALLENHURST

PROPOSED VIEW - NY BIGHT LEASES (1312 FT) - PREDICTED VISIBILITY - 50MM CROP - (WINTER / LATE-NOON)

Truescape®



1/27/2023 at 13:47 - KOP 18

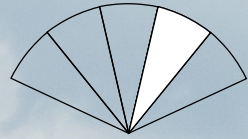
KEY OBSERVATION POINT 18 - ALLENHURST

PROPOSED VIEW - NY BIGHT LEASES (1312 FT) - PREDICTED VISIBILITY - 50MM CROP - (WINTER / LATE-NOON)

Truescape®



1 2 3 4 5



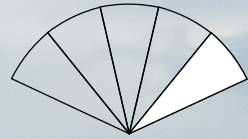
For on-screen display:
Scale bar to be 4 inches wide
Viewing distance 19.7 inches

KEY OBSERVATION POINT 18 - ALLENHURST

PROPOSED VIEW - NY BIGHT LEASES (1312 FT) - PREDICTED VISIBILITY - 50MM CROP - (WINTER / LATE-NOON)

Truescape®

1 2 3 4 5

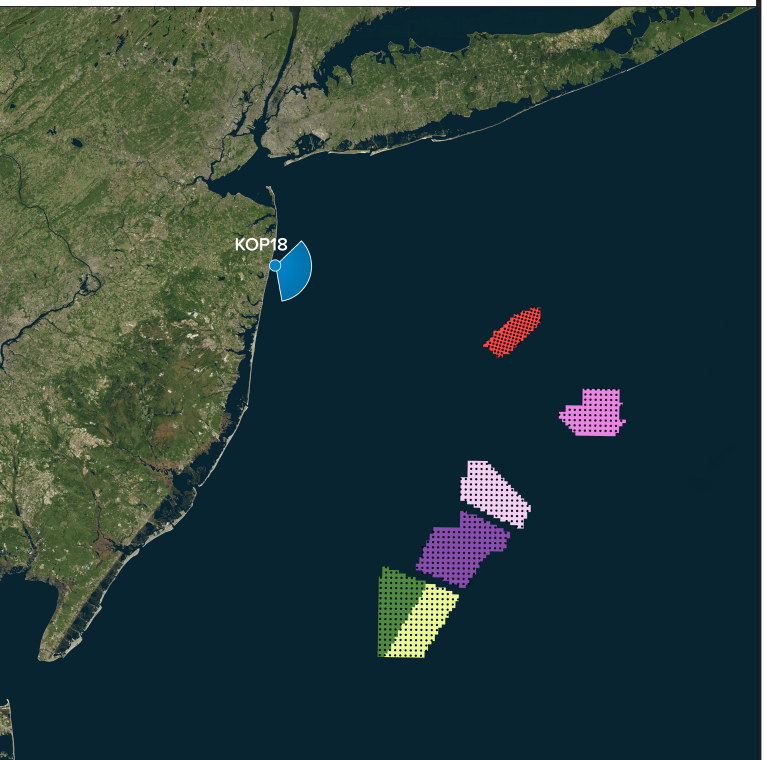


For on-screen display:
Scale bar to be 4 inches wide
Viewing distance 19.7 inches



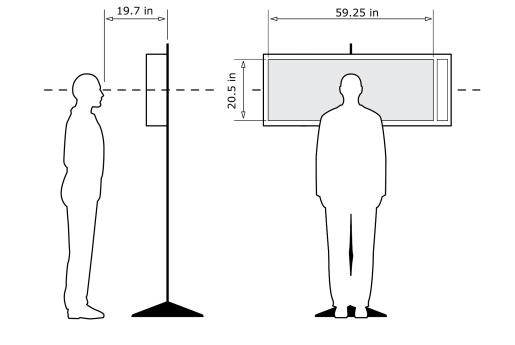
KOP 18, Allenhurst, Late-Noon, Heading 99° - Proposed View - NY Bight Leases (1312ft) - Maximum Visibility

For on-screen display:
 Scale bar to be 4 inches wide
 Viewing distance 19.7 inches



Latitude: 40.23626594
 Longitude: -73.995185
 Elevation of Viewpoint Position: 22.387
 Height of Camera Above Ground: 5.41
 Date of Photography: 1/27/2023 at 13:47
 Horizontal Field of View: 124°
 Vertical Field of View: 95°
 Nearest Turbine: 42.5mi (68.4km) (OCS-A 0544)
 Furthest Visible Turbine: 50.8mi (81.8km) (OCS-A 0538)
 Horizontal Field of View the Projects Occupy: 48.4°

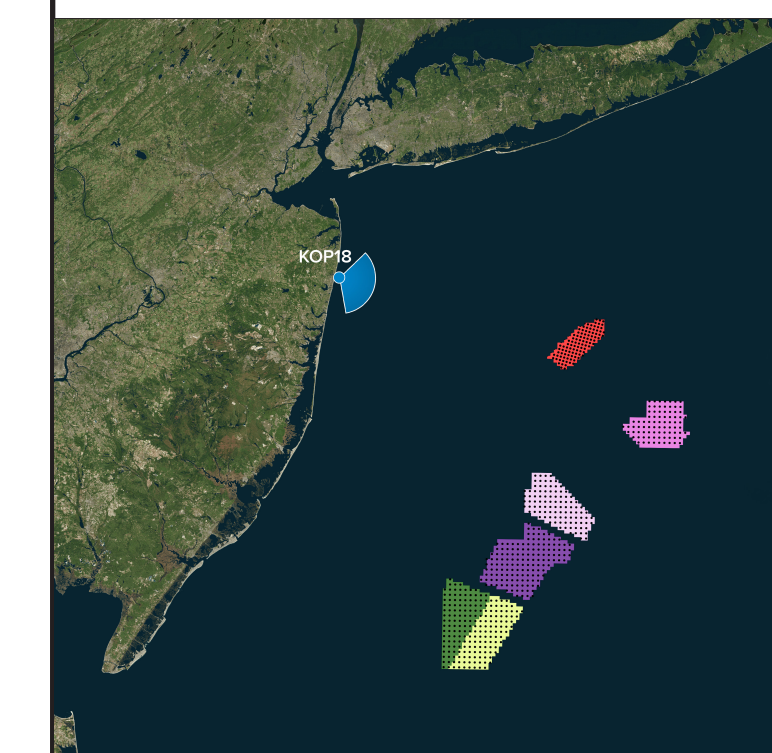
CORRECT VIEWING OF TRUEVIEW™ PHOTO SIMULATIONS



NOTES:
 Viewpoint locations have been precision surveyed by
New York City Land Surveyors PC
 63 Montgomery Avenue
 Staten Island NY 10301
 Heights are above mean sea level.
 Structure design and placement are subject to final engineering.
 No part of this photo simulation shall be altered in any way.

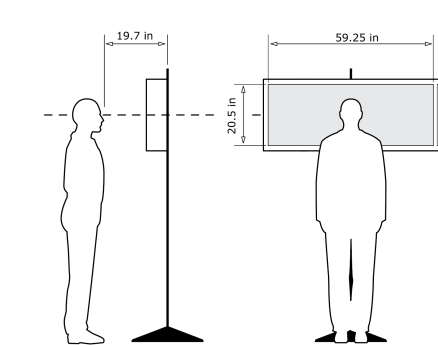
Photo Simulation Created Using
 TrueView™ Technology
 (Patent No.: US 6,184,906 B2)
 Provided by

1/27/2023 14:13:47 - KOP18



Latitude: 40.23626594
 Longitude: -73.995185
 Elevation of Viewpoint Position: 22.387
 Height of Camera Above Ground: 5.41
 Date of Photography: 1/27/2023 at 13:47
 Horizontal Field of View: 124°
 Vertical Field of View: 95°
 Nearest Turbine: 42.5mi (68.4km) (OCS-A 0544)
 Furthest Visible Turbine: 50.8mi (81.8km) (OCS-A 0538)
 Horizontal Field of View the Projects Occupy: 48.4°

CORRECT VIEWING OF TRUEVIEW™ PHOTO SIMULATIONS



NOTES:

Viewpoint locations have been precision surveyed by
New York City Land Surveyors PC
 63 Montgomery Avenue
 Staten Island NY 10301

Heights are above mean sea level.
 Structure design and placement are subject to final engineering.
 No part of this photo simulation shall be altered in any way.

Photo Simulation Created Using
 TrueView™ Technology
 (Patent No.: US 6,184,906 B2)
 Provided by



KOP 18, Allenhurst, Late-Noon, Heading 99° - Proposed View - NY Bight Leases (1312ft) - Maximum Visibility

For on-screen display:
 Scale bar to be 4 inches wide
 Viewing distance 19.7 inches

1/27/2023 14:13:47 - KOP18

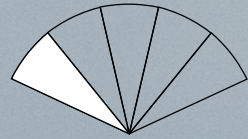
KEY OBSERVATION POINT 18 - ALLENHURST

PROPOSED VIEW - NY BIGHT LEASES (1312 FT) - MAXIMUM VISIBILITY - 50MM CROP - (WINTER / LATE-NOON)

Truescape®



1 2 3 4 5



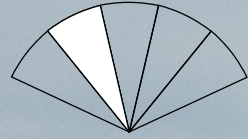
For on-screen display:
Scale bar to be 4 inches wide
Viewing distance 19.7 inches

KEY OBSERVATION POINT 18 - ALLENHURST

PROPOSED VIEW - NY BIGHT LEASES (1312 FT) - MAXIMUM VISIBILITY - 50MM CROP - (WINTER / LATE-NOON)

Truescape®

1 2 3 4 5



For on-screen display:
Scale bar to be 4 inches wide
Viewing distance 19.7 inches

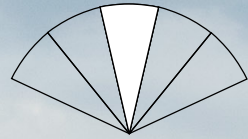
KEY OBSERVATION POINT 18 - ALLENHURST

PROPOSED VIEW - NY BIGHT LEASES (1312 FT) - MAXIMUM VISIBILITY - 50MM CROP - (WINTER / LATE-NOON)

Truescape®



1 2 3 4 5



For on-screen display:
Scale bar to be 4 inches wide
Viewing distance 19.7 inches

KEY OBSERVATION POINT 18 - ALLENHURST

PROPOSED VIEW - NY BIGHT LEASES (1312 FT) - MAXIMUM VISIBILITY - 50MM CROP - (WINTER / LATE-NOON)

Truescape®



For on-screen display:
Scale bar to be 4 inches wide
Viewing distance 19.7 inches

KEY OBSERVATION POINT 18 - ALLENHURST

PROPOSED VIEW - NY BIGHT LEASES (1312 FT) - MAXIMUM VISIBILITY - 50MM CROP - (WINTER / LATE-NOON)

Truescape®



For on-screen display:
Scale bar to be 4 inches wide
Viewing distance 19.7 inches