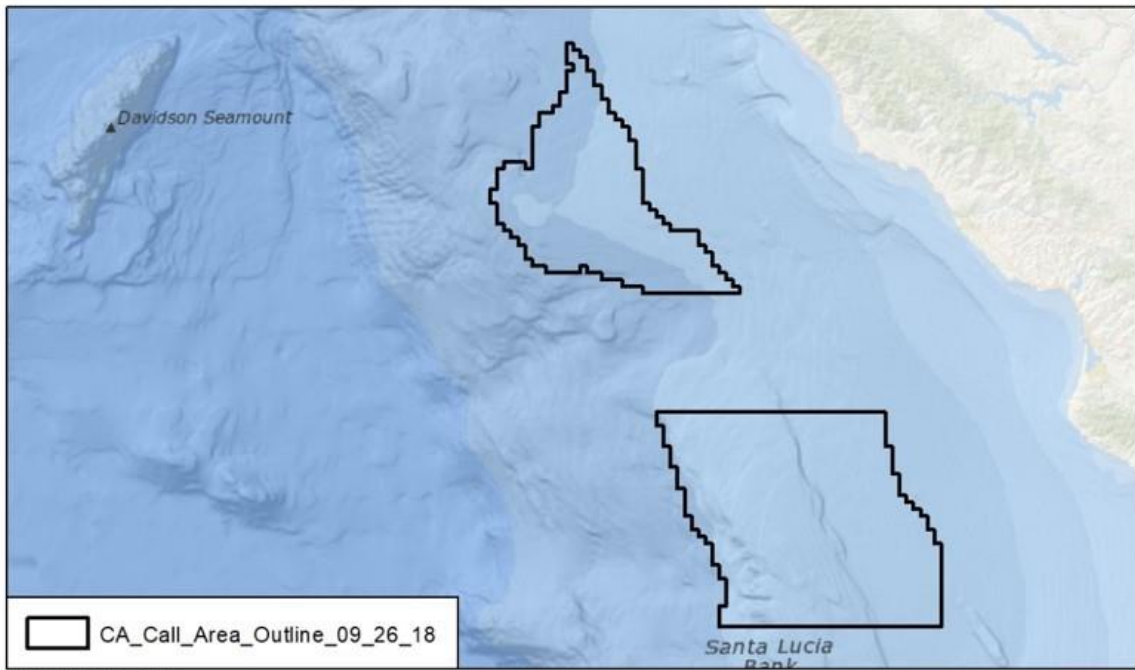
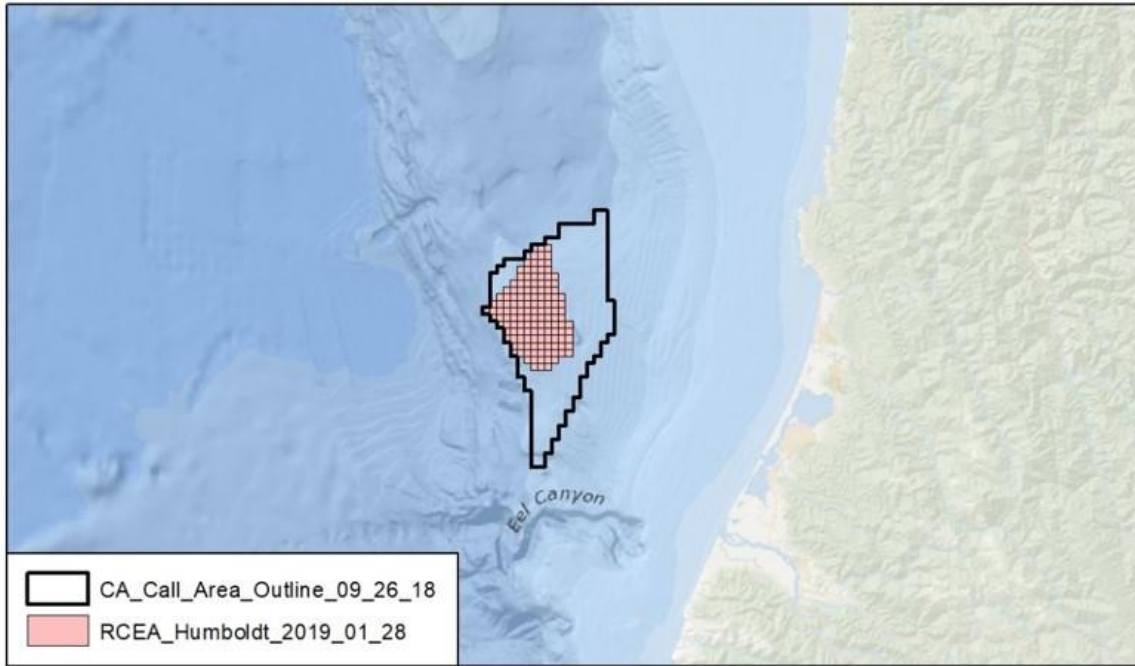


# Redwood Coast Energy Authority (RCEA)



<b>Redwood Coast Energy Authority Call Area Nomination</b>			
<b>Humboldt Call Area</b>			
<b>Protraction Name</b>	<b>Protraction No.</b>	<b>Block Number</b>	<b>Sub-Block</b>
Eureka	NK10-10	6023	D
Eureka	NK10-11	6024	A,B,C,D,E,F,G,H,I,J,K,L,N,O,P
Eureka	NK10-12	6025	A,B,C,D,E,F,G,H,I,J,K,L,M,N,O,P
Eureka	NK10-13	6026	A,B,E,F,I,J,M,N
Eureka	NK10-14	6074	C,D,H
Eureka	NK10-15	6075	A,B,C,D,E,F,G,H,I,J,K
Eureka	NK10-16	6076	A,B
Crescent City	NK10-07	7023	P
Crescent City	NK10-08	7024	F,G,I,J,K,M,N,O
Crescent City	NK10-09	7073	C,D,G,H,J,K,L,M,N,O,P
Crescent City	NK10-10	7074	A,B,C,D,E,F,G,H,I,J,K,L,M,N,O,P
Crescent City	NK10-11	7122	D,G,H,J,K,L,O,P
Crescent City	NK10-12	7123	A,B,C,D,E,F,G,H,I,J,K,L,M,N,O,P
Crescent City	NK10-13	7124	A,B,C,D,E,F,G,H,I,J,K,L,M,N,O,P
Crescent City	NK10-14	7125	A,E,I,M