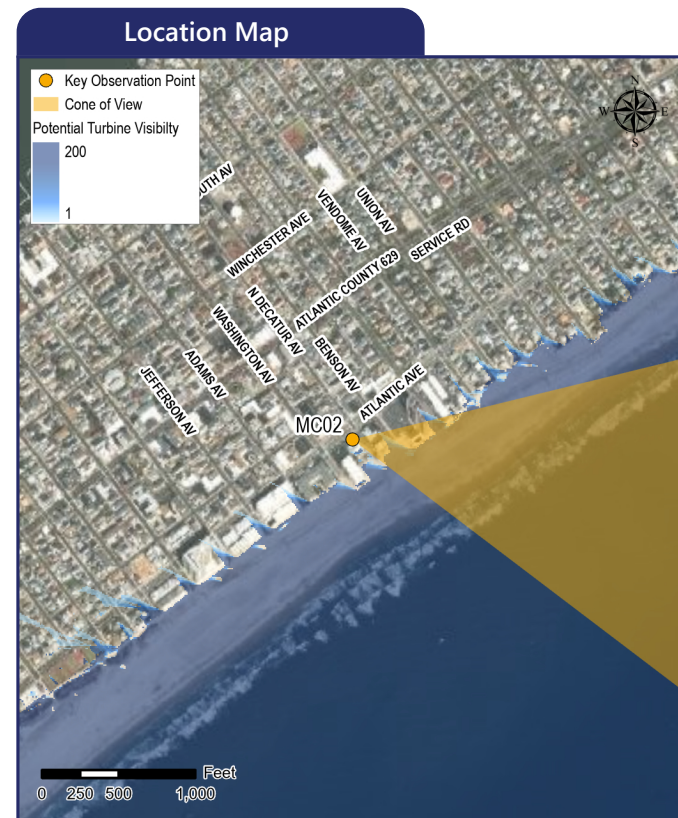
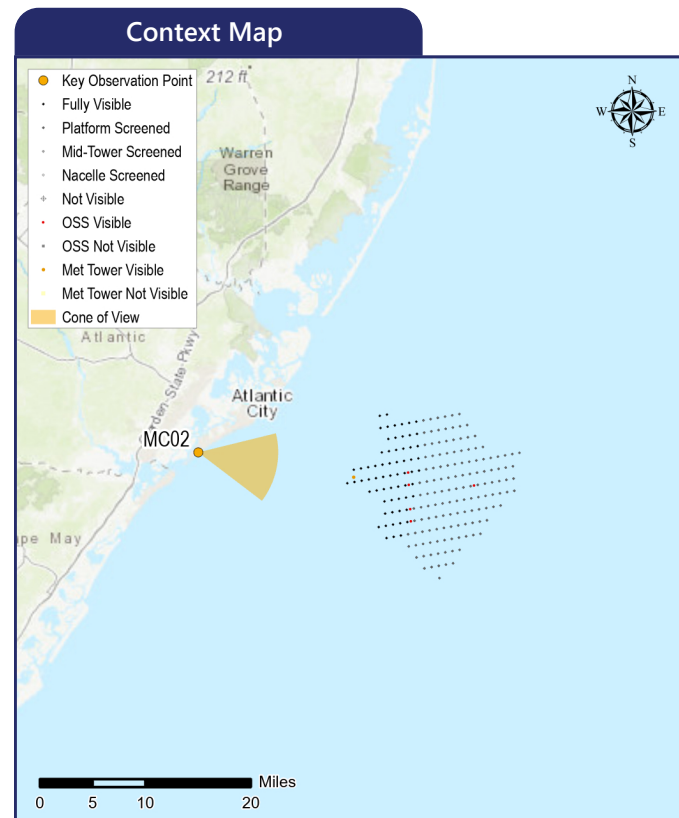


MC02 Lucy the Margate Elephant National Historic Landmark

Margate City, Atlantic County, New Jersey



The image above is a +/- 124° panorama photograph from the lookout on top of Lucy the Margate Elephant, panning clockwise from northeast-east (left) to south (right). The yellow rectangle within the photo represents the extent of the photosimulation photo(s).



Simulation Information

Coordinates: 39.32088°N, 74.51170°W
 Character Area: Commercial Beachfront, Seascape (SCA)
 User Group: Residents/Tourists
 Direction of View: East
 Distance to Nearest Visible Turbine: 14.43 miles
 Visually Sensitive Resource: Atlantic Coast Public Beach, Lucy The Margate Elephant, Margate City Public Beach

Environmental Information

Date Taken: 07/29/2020
 Time: 3:30 PM
 Temperature: 92°F
 Humidity: 35%
 Visibility: 10 miles
 Wind Direction: Southwest
 Wind Speed: 10 mph
 Conditions Observed: Fair

Photograph Information

Camera: Canon EOS 5D Mark IV
 Resolution: 30.4 Megapixels
 Focal Length: 50mm
 Camera Height: 52.5 feet AMSL

Notes

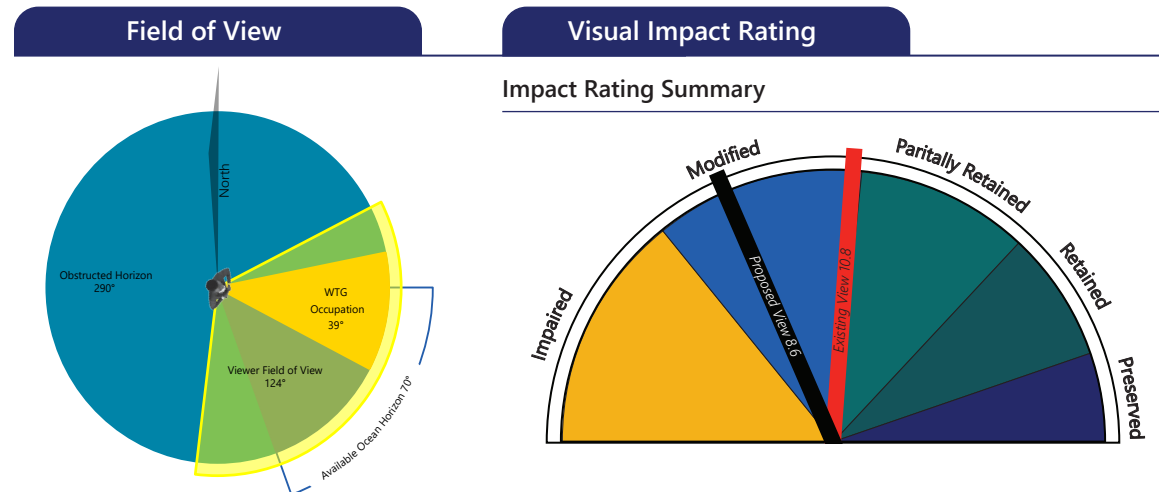
Printed at 100%, the photosimulations are 15 inches wide by 10 inches high. At this size, the photosimulation(s) should be viewed from a distance of 21 inches.

Simulated Photograph(s)



Photograph ASOW1119

Map considers screening by curvature of the earth, viewer height, and WTG height only. Considering landscape features 181 WTGs will be visible.



-2.2. Somewhat Significant

Visual Threshold Level (VTL)

5 An object/phenomenon that is not large but contrasts with the surrounding landscape elements so strongly that it is a major focus of visual attention, drawing viewer attention immediately and tending to hold that attention. In addition to strong contrasts in form, line, color, and texture, bright light sources such as lighting and reflections and moving objects associated with the study subject may contribute substantially to drawing viewer attention. The visual prominence of the study subject interferes noticeably with views of nearby landscape/seascape elements (Sullivan et al., 2013).

| Principles of Composition and Factors Affecting Visual Impact Summary | |
|---|---|
| Design Elements | Description |
| Focal Point | The open horizon framed by development draws viewer attention, but does not hold attention as a specific focal point. |
| Order | The built environment is cluttered but contained as one body of shoreline balanced by open water and open sky. |
| Visual Clutter | There is considerable clutter in the foreground that competes with the open water view. |
| Movement | People on the beach and waves likely to be the main source of movement. |
| Duration & Frequency of View | Short Term/Fleeting & Long-term Occasional |
| Atmospheric Conditions | The sky is almost completely clear with only a few wispy clouds on the right side. |
| Lighting Direction | Frontlit |
| Scenic or Recreational Value | Atlantic Coast Public Beach, Lucy the Margate Elephant, Margate City Public Beach. |

Compatibility and Contrast Rating Average

| Lucy the Margate Elephant NHL | | | |
|-------------------------------|---------------|-------|-------------------|
| Resource | Compatibility | Scale | Spatial Dominance |
| Water Resources | 2.6 | 2.6 | 2.6 |
| Landform | 2.1 | 2.1 | 1.9 |
| Vegetation | 1.3 | 1.3 | 1.8 |
| Land Use | 1.5 | 1.5 | 1.8 |
| User Activity | 2.1 | 2.1 | 2.1 |

1 – Compatible
 2 – Somewhat Compatible
 3 – Not Compatible
 1 – Minimal
 2 – Moderate
 3 – Severe
 1 – Subordinate
 2 – Co-Dominant
 3 – Dominant

Existing Conditions

Scenic Quality: Partially Retained
 Rating Panel Score Average: 10.8
 Rating Panel Score Range: 9.3 - 11.7

This KOP is located from the observation deck of Lucy the Elephant, a six-story elephant-shaped example of novelty architecture, constructed of wood and tin sheeting in 1881 in Margate City, New Jersey, approximately 5 miles south of Atlantic City. Originally named Elephant Bazaar, Lucy was built to promote real estate sales and attract tourists. Today, Lucy the Margate Elephant is the oldest surviving roadside tourist attraction in America and was designated as a National Historic Landmark in 1976. She remains a tourist attraction, with 135,000 visitors to the site in 2016.

The existing view to the east from this location features an eclectic mix of buildings and other man-made structures in the immediate foreground, backed by a fenced and planted dune restoration area. The elevated perspective is observed from within the observation deck, the basket carried on Lucy's back. Beyond the restoration area, a strip of white sandy beach extends across the middle ground of the view. The beach is well populated by sunbathers and other beach-goers. Beyond the band of breaking surf at the shoreline, the dark blue ocean extends to a well-defined horizon line where it meets the light blue sky. Due to the elevated location of this viewpoint, the sky is unbroken by man-made features (e.g., overhead utility poles and lines), except for the high-rise apartment building on the left side of the view. Despite the broad expanse of open water and sky, the abundance of nearby built structures and people give the view a highly developed character.

Rating panel members indicated that the view from the historic Lucy the Margate Elephant is a highly developed and cluttered view that lacks a specific focal point. The vista to the deep blue ocean is interrupted by numerous utility and service amenities, as well as man-made structures of varying style, material, and scale. The viewer experiences this vista for a short period of time while in the howdah observation deck mounted on Lucy's back. Despite the historic significance of the site, the surrounding environment detracts from, rather than contributes to, the visitor's viewing experience. Rating panel scores for the existing conditions photographs ranged from 9.3 to 11.7 (average score = 10.8) suggesting this view is partially retained.

Proposed Conditions

Scenic Quality: Modified
 Rating Panel Score Average: 8.6
 Rating Panel Score Range: 6.0 - 9.7
 Impact Magnitude: 2.2 (Somewhat Significant)

Viewshed analysis suggests that Project visibility from this general area will be largely limited to the open beach and more elevated sites within the adjacent developed neighborhood. Ground level views of the Project will be completely blocked by the first inland row of built structures as one moves into the City.

With the proposed Project in place, the view is dominated by a large and highly visible array of WTGs that extend across a large portion of the ocean view to the east-southeast from this location. Of the 123 degrees of relatively unobstructed ocean horizon, the Project occupies approximately 39 degrees or 31.7 percent of the view (see Field of View Image, left). Project visibility is enhanced by the relative proximity of the WTGs (14.43-miles) but partially mitigated by the afternoon sun front-lighting, which makes the WTGs appear lighter against the sky. Rating panel members had a somewhat variable range of reactions to the impact resulting from the Project WTGs, with the VIA scores ranging from 6.0 to 9.7 (average score = 8.6). These scores indicate an average reduction of 2.2 points in comparison to the existing view suggesting that the view becomes modified and somewhat significant visual impacts may result from the Projects during clear viewing conditions. Individual rating panel members indicated reductions that ranging from 1.3 to 3.3. Panel members noted that the presence of the WTGs adds to an already visually cluttered and aesthetically compromised view that is further affected by the perceived randomness of the WTG placement and the stacking WTGs that present as a singular, dense, white silhouette on the horizon. The overlapping blades of the WTGs create a fence-like visual barrier along the horizon and their movement will attract viewer attention and make the WTGs a focus of this view. However, the visibility and visual dominance of the WTGs is likely to be reduced under more hazy or foggy sky conditions.

Panel members assigned the Project visibility an average VTL of 5 from this KOP. The greatest influence on the VTL score is associate with the lack of compatibility, severe scale contrast, and spatial dominance when considering the ocean (water resources). The WTGs also resulted in moderate scale contrast and co-dominance with land use, landform, and user activity.

MC02 Lucy the Margate Elephant National Historic Landmark

Margate City, Atlantic County, New Jersey

KOP Information

Primary Field of View: East

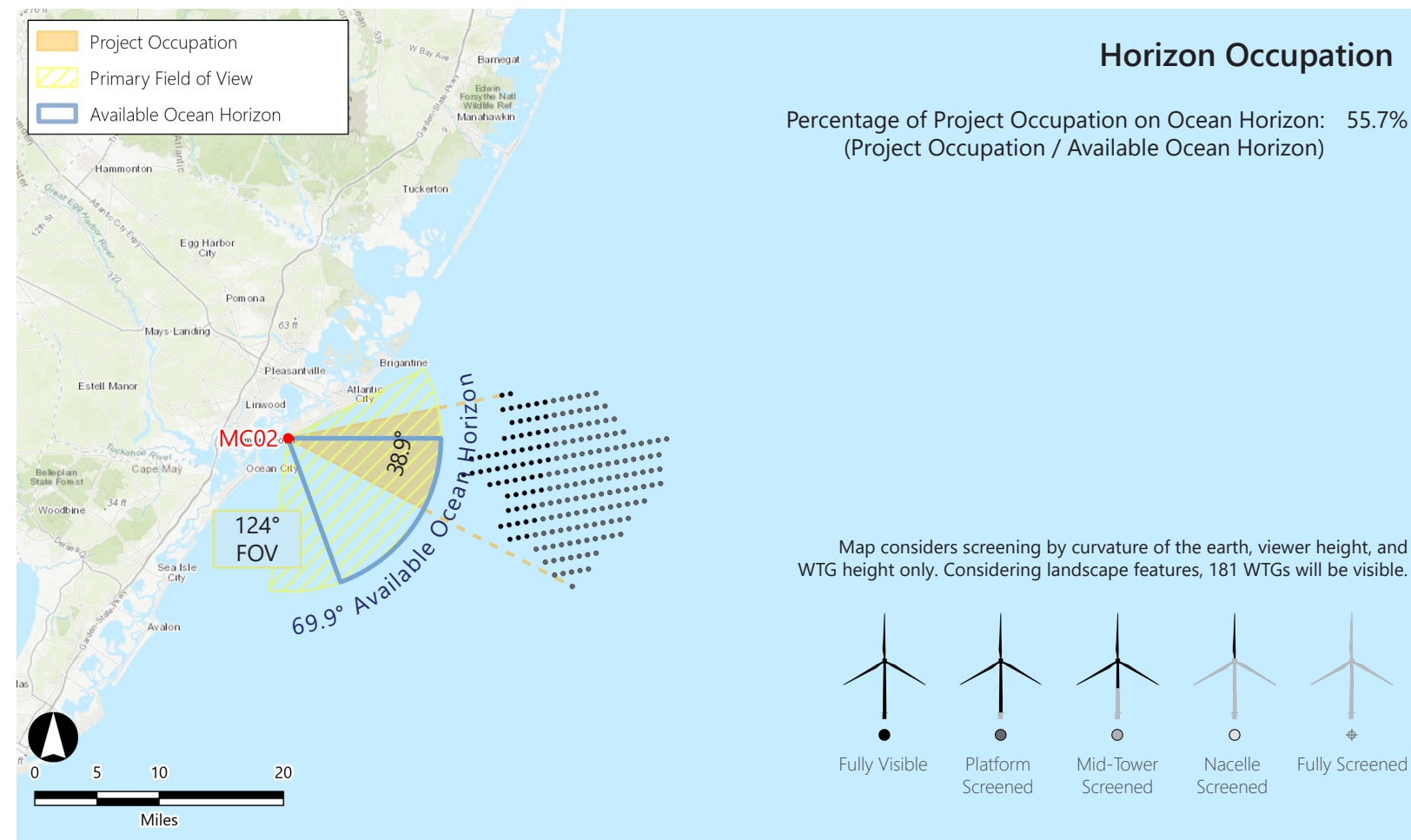
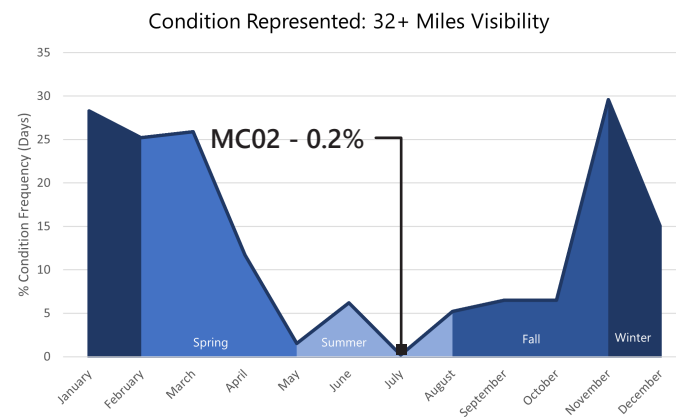
Distance to Closest WTG: 14.43 miles

Camera Height: 52.50 ft

User Groups: Residents, Tourists

Atmospheric Perspective

The effect the atmosphere has on the appearance of an object as viewed from a distance.



WTG Color Contrast

Color Contrast Rating:



Lighting Condition: Front lit

Season: Summer

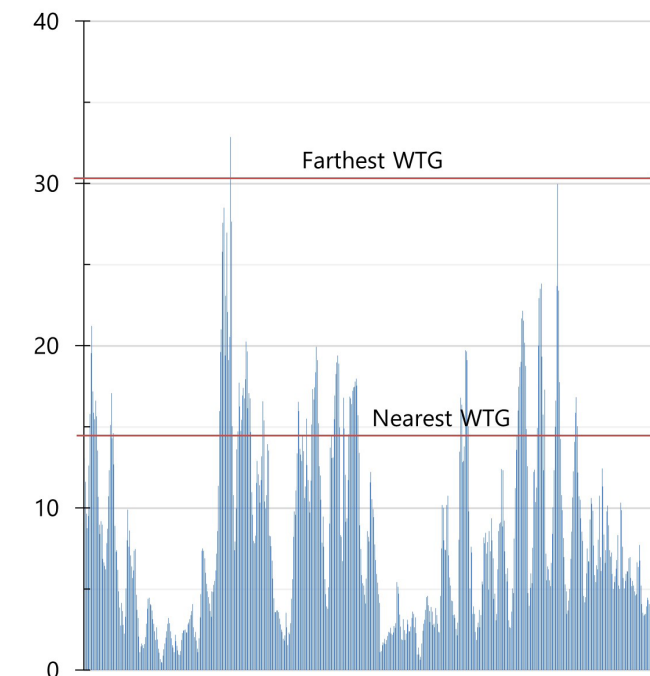
Sky Condition: Fair

Atmospheric Condition: > 10 Miles

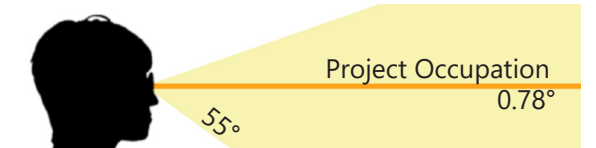
SIMILAR VIEWING PARAMETERS:

KOP OC04 illustrates the project from 17.18 miles in the back lit condition. This provides an indication of how the turbines may appear from this KOP during morning conditions.

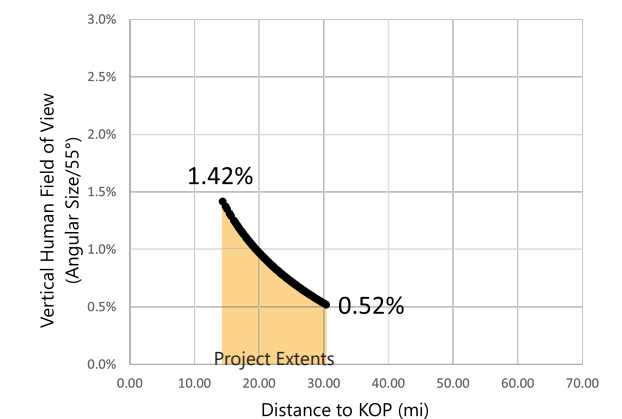
July, 2019 - Hourly Visibility Distance



Vertical Occupation



Percentage of Human FOV: 1.42% (0.78° / 55°)
(Considering the nearest visible turbine)





Existing Conditions

Atlantic Shores Offshore Wind Project

Outer Continental Shelf - New Jersey

Key Observation Point: MC02 - Lucy the Margate Elephant National Historic Landmark

Attachment E: Photosimulations, Page 132 of 159

Printed at 100% the resulting photosimulation size is 15 inches wide by 10 inches high. At this size and focal length, the photosimulation should be viewed from a distance of 21 inches.



This scale is designed to insure the photosimulation images are printed at the intended size.



Photosimulation

Atlantic Shores Offshore Wind Project

Outer Continental Shelf - New Jersey

Key Observation Point: MC02 - Lucy the Margate Elephant National Historic Landmark
Attachment E: Photosimulations; Page 133 of 159

Printed at 100% the resulting photosimulation size is 15 inches wide by 10 inches high. At this size and focal length, the photosimulation should be viewed from a distance of 21 inches.



This scale is designed to insure the photosimulation images are printed at the intended size.