

Vineyard Wind South Project

National Historic Preservation Act

What is Section 106 of the National Historic Preservation Act?

Section 106 of the National Historic Preservation Act (NHPA) requires that each federal agency consider the effects on historic properties of projects they fund, permit, license, approve, assist, or carry out.

What does the Section 106 consultation process do?

- 1) Identify Consulting Parties and invite them to participate in the process
- 2) Identify historic properties *
- 3) Assess the effects of the undertaking on historic properties*
- 4) Explore alternatives to avoid, minimize, or mitigate adverse effects

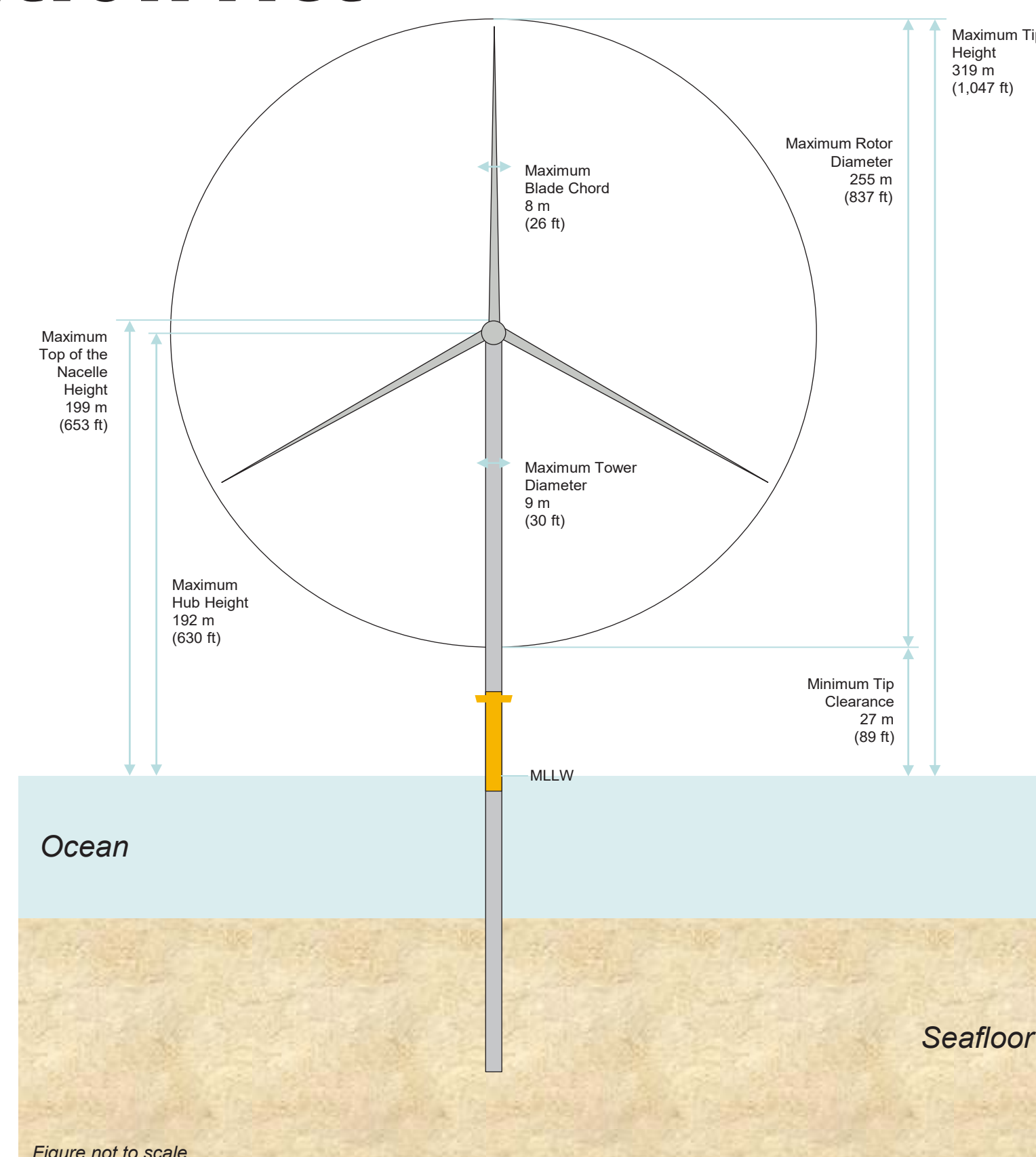
*Under the NEPA substitution process 2& 3 above are combined and step 3 is consultation with Consulting Parties during the NEPA scoping, environmental analysis, and the preparation of the EIS regarding the effect of the undertaking on historic properties

What is a historic property?

A historic property is defined in the NHPA [54 U.S.C. § 300308] as any "prehistoric or historic district, site, building, structure, or object included in, or eligible for inclusion on, the National Register of Historic Places, including artifacts, records, and material remains related to such a property or resource."

What are the National Register Criteria?

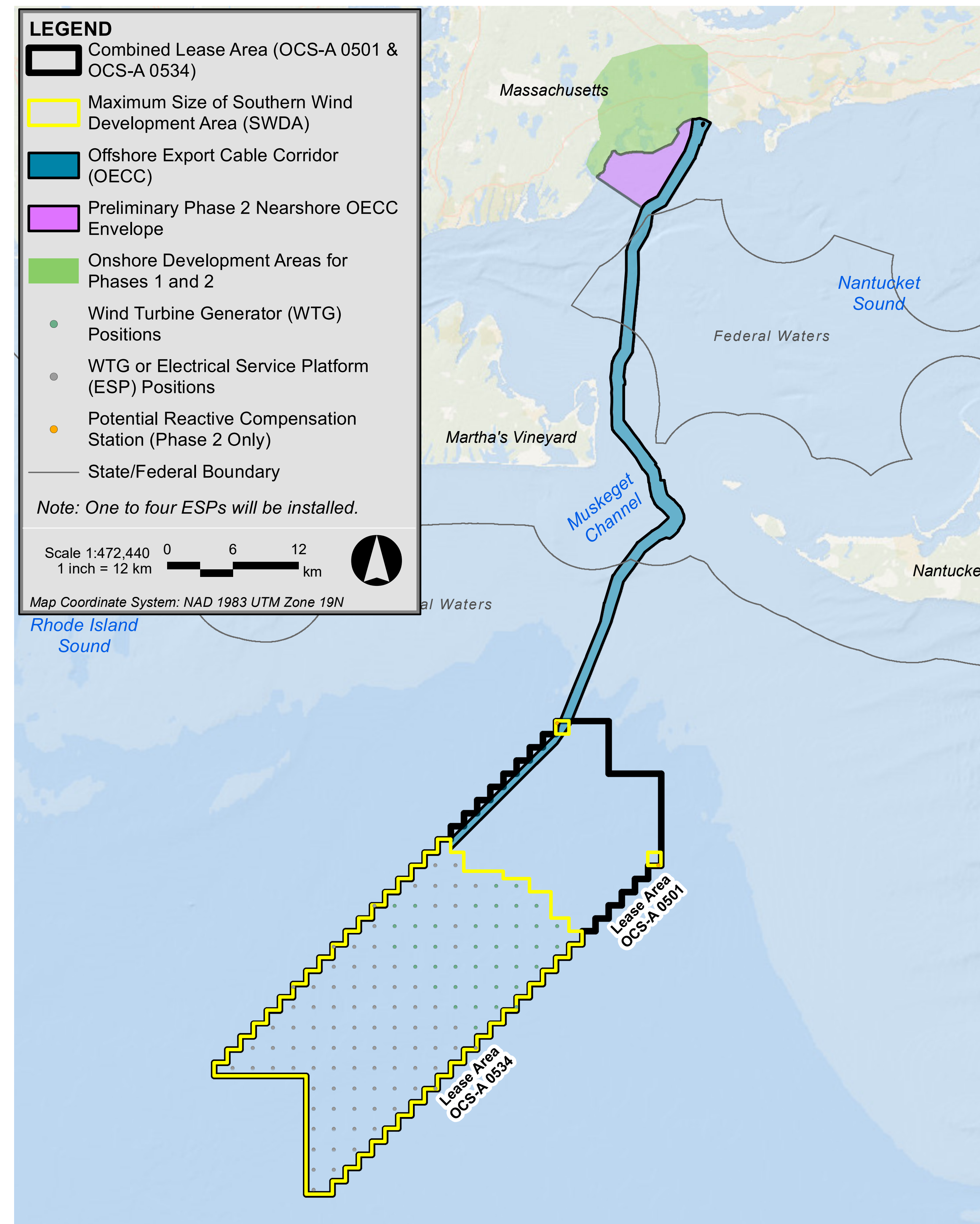
- A – Associated with events that have made a significant contribution to the broad patterns of our history; or
- B – Associated with the lives of Persons Significant in our past;
- C – Embody the distinctive characteristics of a type, period, or method of construction, or that represent the work of a master, or that possess high artistic values, or that represent a significant and distinguishable entity whose components may lack individual distinction; or
- D – Have yielded, or may be likely to yield, information important in prehistory or history



Maximum Design Wind Turbine



Indicative image of an Offshore Substation



Vineyard Wind South Project Overview

Vineyard Wind South Project

What is the Area of Potential Effect (APE) for the Vineyard Wind South Project

BOEM needs your input regarding historic properties (building, site, district, object or structure or Traditional Cultural Property) that may be affected by this project.

This project has three categories of the APE:

- **Terrestrial:** includes areas potentially impacted by any ground disturbing activities associated with the construction and operation of the proposed Project
- **Marine:** The depth and breadth of the seabed potentially impacted by any bottom-disturbing activities.
- **Viewshed:** The areas from which renewable energy structures—whether located offshore or onshore—would be visible. This would include the proposed onshore substation site, as well as WTGs, offshore substations, and a potential reactive compensation station.



View southeast toward the SWDA, at right.
Gay Head Lighthouse, Aquinnah



View toward the SWDA at the end of Wasque Avenue.
Wasque Reservation, Chappaquiddick



Aquinnah Cultural Center, Photographic Simulation

Simulated view: Vineyard Wind South



Vineyard Wind South Project

What is the Area of Potential Effect (APE) for the Vineyard Wind South Project

