

Base Photographic Documentation

Date (MM/DD/YYYY): 05/17/2024
 Time (24hr): 7:40 am
 GPS Longitude: -70.0619906
 GPS Latitude: 42.0391417
 Viewpoint Elevation (ft): 167.93
 Camera Height (ft): 5.41
 Camera Heading (°): 70°
 Camera Direction: ENE

Camera Information

Camera Make & Model: Canon EOS 5DS R
 Camera Sensor Size: 36mm x 24mm
 Lens Make & Model: Sigma F1.4 DG HSM A013
 Lens Focal Length: 20mm
 Field of View: 65.47° (H) / 46.397° (V)

Sun And Weather Information

Sun Azimuth: 75
 Sun Elevation: 12
 Lighting Angle (On Turbines): Back Lit
 Weather Conditions: Cloudy
 Maximum Visibility (NM): 6.13
 Temperature (°F): 54
 Temperature (°C): 14
 Humidity (%): 94

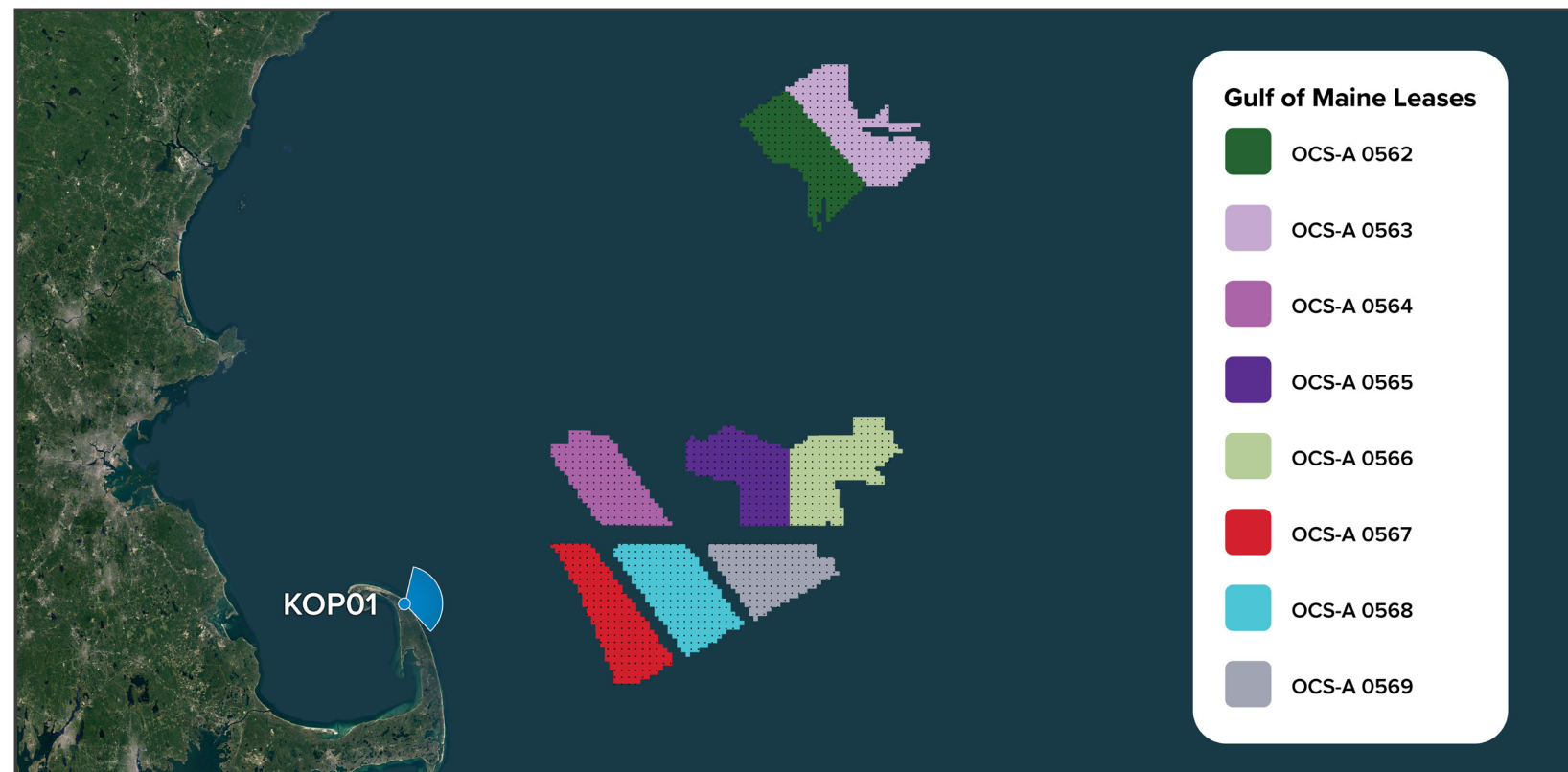
Viewing Instructions

11 x 17 inch Printed Display: Distance is 19.7 inches (500mm)
 On-Screen Display: Distance is 19.7 inches (500mm)

Image Preview



Context Map

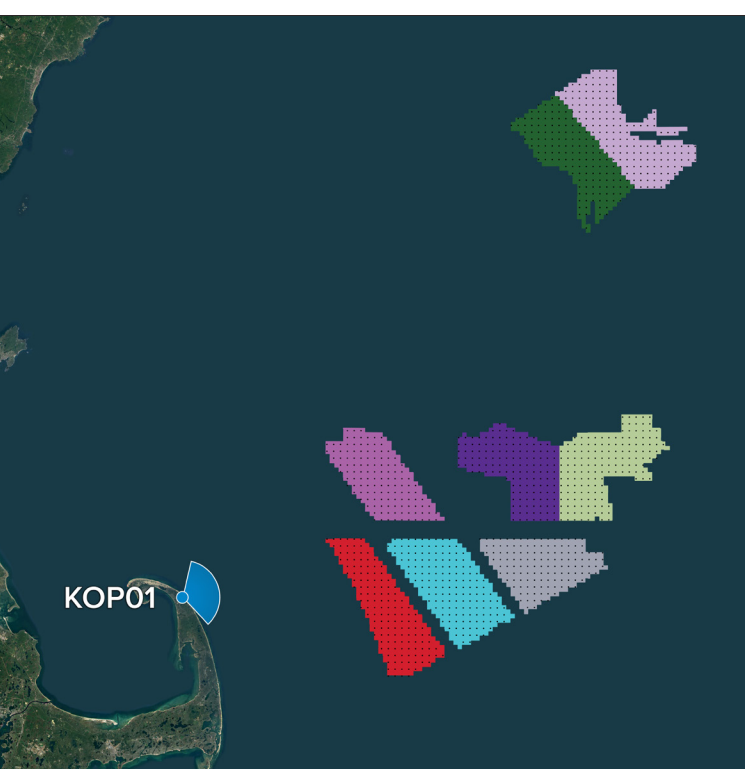


● Key Observation Point (KOP) ● Turbines



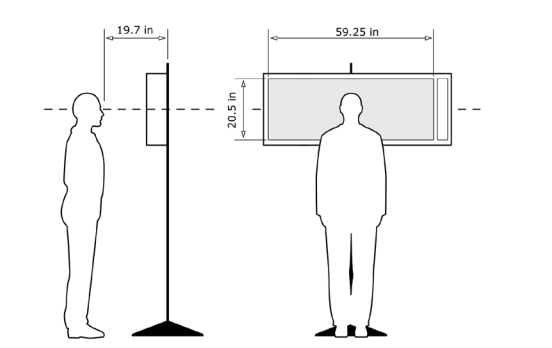
KOP 1, Highland Lighthouse, Morning, Heading 70° - Existing View

For on-screen display:
 Scale bar to be 4 inches wide
 Viewing distance 19.7 inches



Latitude: 42.0391417
 Longitude: -70.0619906
 Elevation of Viewpoint Position: 167.93
 Height of Camera Above Ground: 5.41
 Date of Photography: 05/17/2024 at 7:40 am
 Horizontal Field of View: 124°
 Vertical Field of View: 55°
 Distance to Nearest Turbine (mi): 26.24
 Distance to Furthest Visible Turbine (mi): 58.03

CORRECT VIEWING OF TRUEVIEW™ PHOTO SIMULATIONS



NOTES:
 Viewpoint locations have been precision surveyed by
VHB
 1805 Atlantic Avenue
 Manasquan, NJ 08736
 Heights are above mean sea level.
 Structure design and placement are subject to final engineering.
 No part of this photo simulation shall be altered in any way.

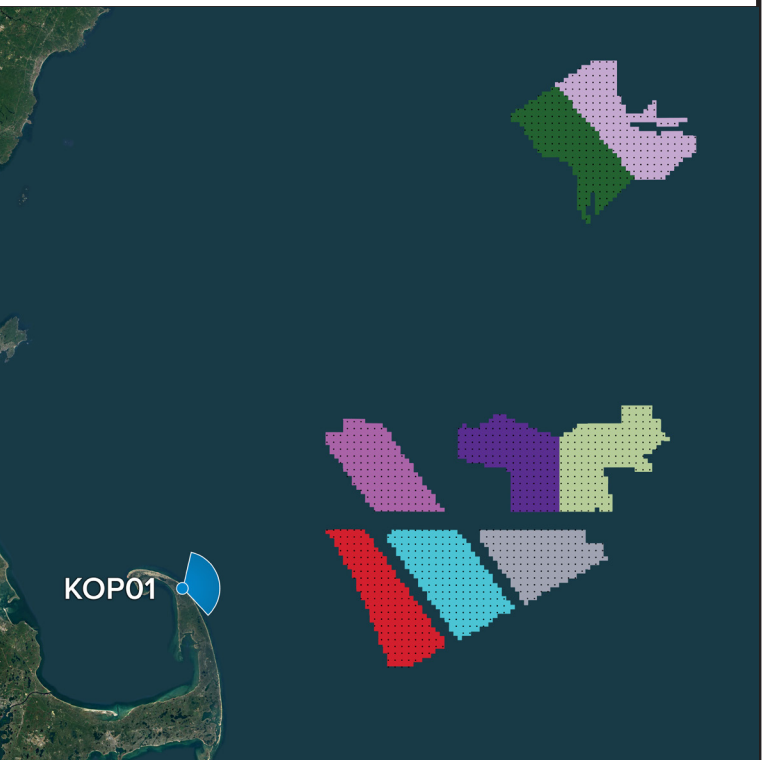
Photo Simulation Created Using
 TrueView™ Technology
 (Patent No.: US 8,184,906 B2)
 Provided by

05/17/2024 at 7:40 am - KOP1



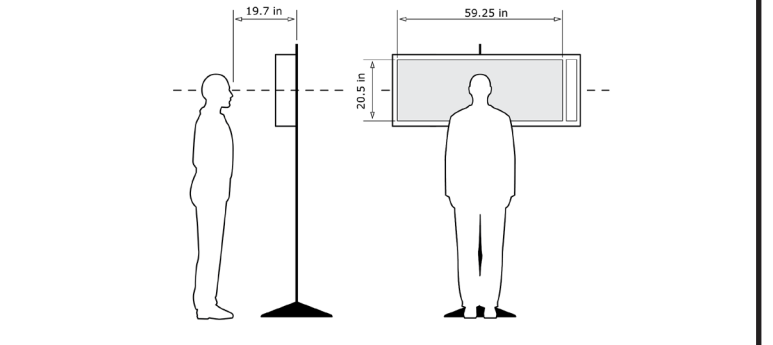
KOP 1, Highland Lighthouse, Morning, Heading 70° - Proposed View - Predicted Visibility

For on-screen display:
 Scale bar to be 4 inches wide
 Viewing distance 19.7 inches



Latitude: 42.0391417
 Longitude: -70.0619906
 Elevation of Viewpoint Position: 167.93
 Height of Camera Above Ground: 5.41
 Date of Photography: 05/17/2024 at 7:40 am
 Horizontal Field of View: 124°
 Vertical Field of View: 55°
 Distance to Nearest Turbine (mi): 26.24
 Distance to Furthest Visible Turbine (mi): 58.03

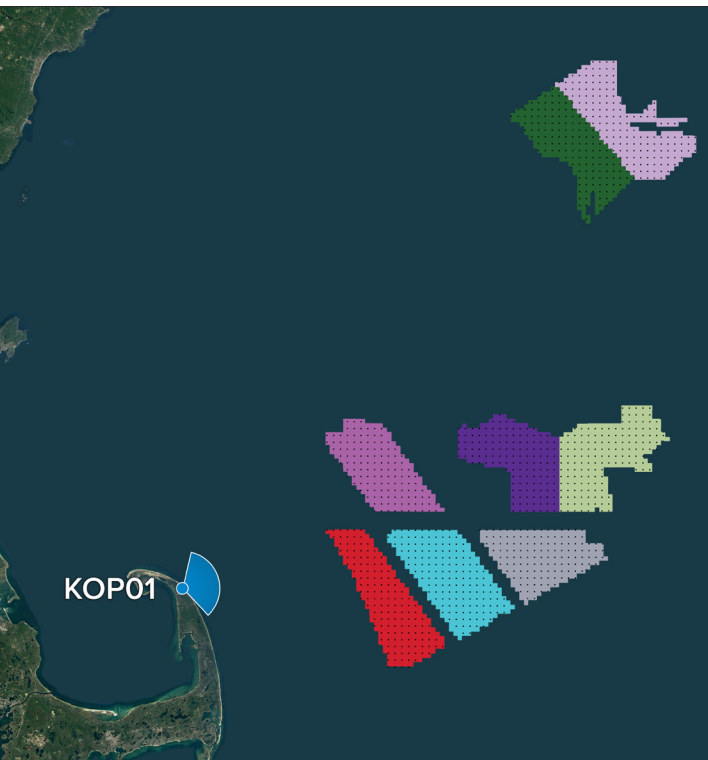
CORRECT VIEWING OF TRUEVIEW™ PHOTO SIMULATIONS



NOTES:
 Viewpoint locations have been precision surveyed by
VHB
 1805 Atlantic Avenue
 Manasquan, NJ 08726
 Heights are above mean sea level.
 Structure design and placement are subject to final engineering.
 No part of this photo simulation shall be altered in any way.

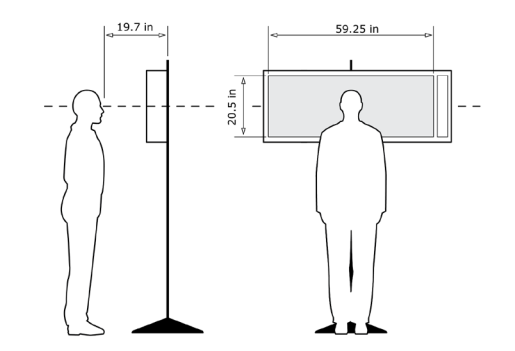
Photo Simulation Created Using
 TrueView™ Technology
 (Patent No.: US 8,184,906 B2)
 Provided by

05/17/2024 at 7:40 am - KOP1



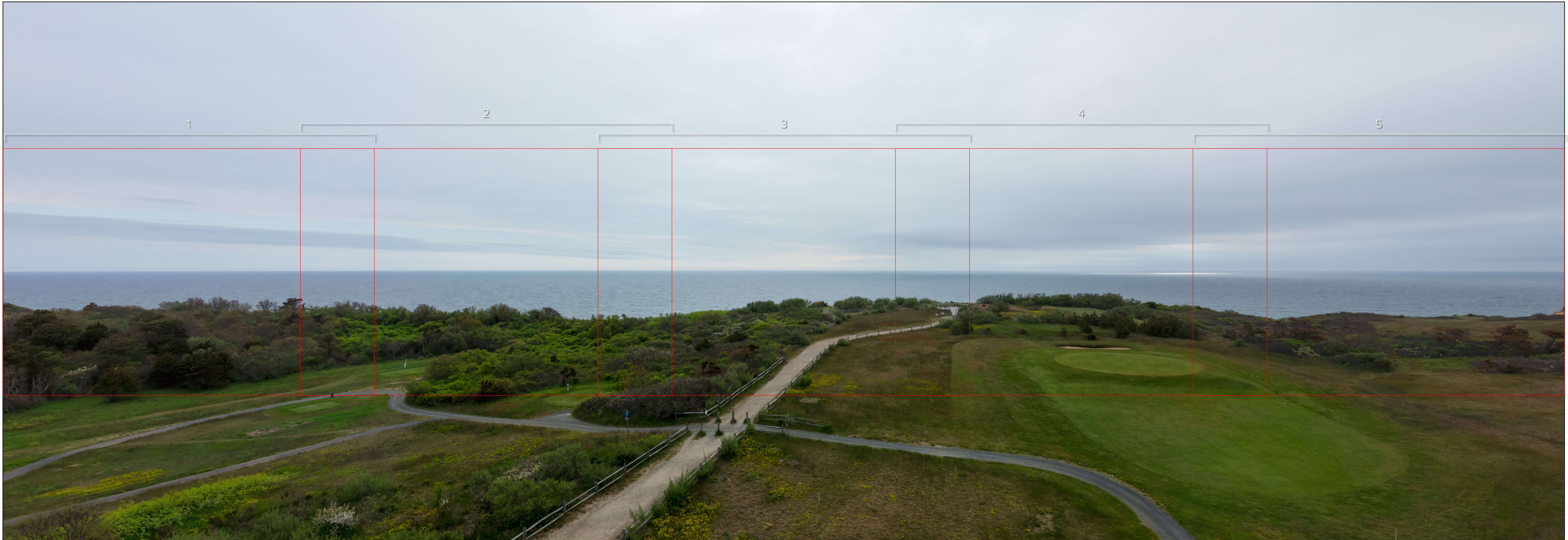
Latitude: 42.0391417
 Longitude: -70.0619906
 Elevation of Viewpoint Position: 167.93
 Height of Camera Above Ground: 5.41
 Date of Photography: 05/17/2024 at 7:40 am
 Horizontal Field of View: 124°
 Vertical Field of View: 55°
 Distance to Nearest Turbine (mi): 26.24
 Distance to Furthest Visible Turbine (mi): 58.03

CORRECT VIEWING OF TRUEVIEW™ PHOTO SIMULATIONS



NOTES:
 Viewpoint locations have been precision surveyed by
VHB
 1805 Atlantic Avenue
 Manasquan, NJ 08736
 Heights are above mean sea level.
 Structure design and placement are subject to final engineering.
 No part of this photo simulation shall be altered in any way.

Photo Simulation Created Using
 TrueView™ Technology
 (Patent No.: US 8,184,906 B2)
 Provided by



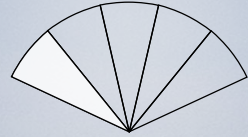
KOP 1, Highland Lighthouse, Morning, Heading 70° - Proposed View - Predicted Visibility

For on-screen display:
 Scale bar to be 4 inches wide
 Viewing distance 19.7 inches

05/17/2024 at 7:40 am - KOP1



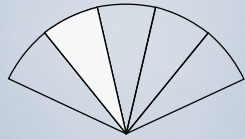
1 2 3 4 5



For on-screen display:
Scale bar to be 4 inches wide
Viewing distance 19.7 inches



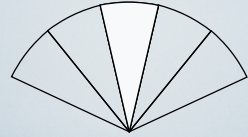
1 2 3 4 5



For on-screen display:
Scale bar to be 4 inches wide
Viewing distance 19.7 inches



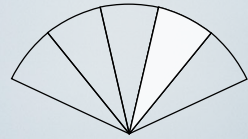
1 2 3 4 5



For on-screen display:
Scale bar to be 4 inches wide
Viewing distance 19.7 inches



1 2 3 4 5



For on-screen display:
Scale bar to be 4 inches wide
Viewing distance 19.7 inches



1 2 3 4 5

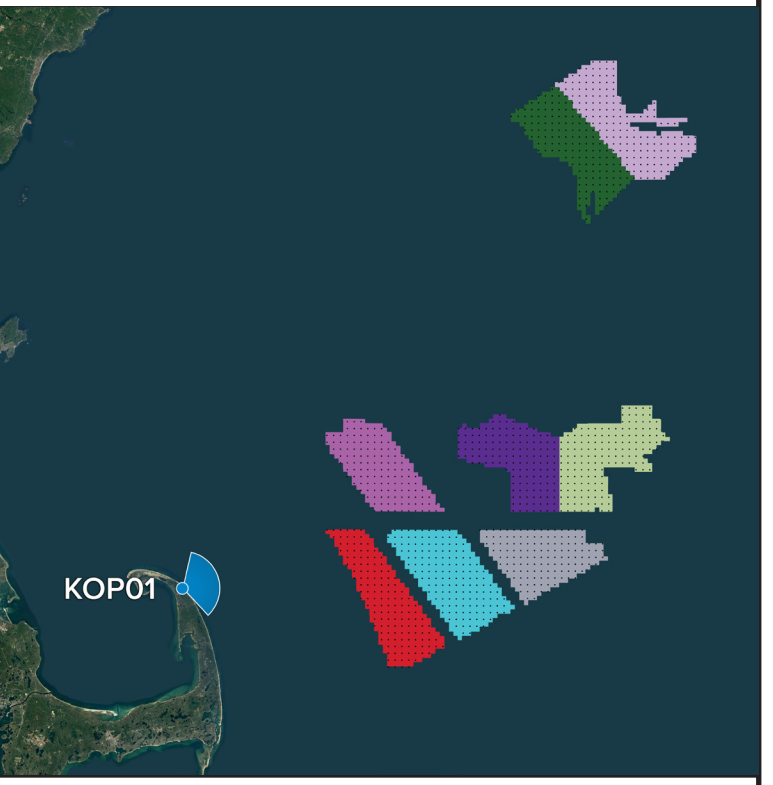


For on-screen display:
Scale bar to be 4 inches wide
Viewing distance 19.7 inches



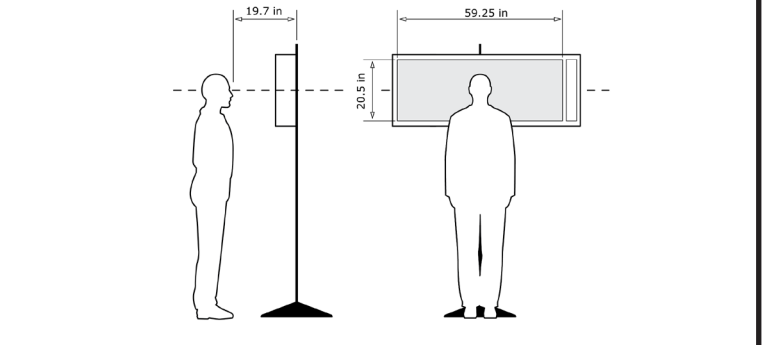
KOP 1, Highland Lighthouse, Morning, Heading 70° - Proposed View - Maximum Visibility

For on-screen display:
 Scale bar to be 4 inches wide
 Viewing distance 19.7 inches



Latitude:	42.0391417
Longitude:	-70.0619906
Elevation of Viewpoint Position:	167.93
Height of Camera Above Ground:	5.41
Date of Photography:	05/17/2024 at 7:40 am
Horizontal Field of View:	124°
Vertical Field of View:	95°
Distance to Nearest Turbine (mi):	26.24
Distance to Furthest Visible Turbine (mi):	58.03

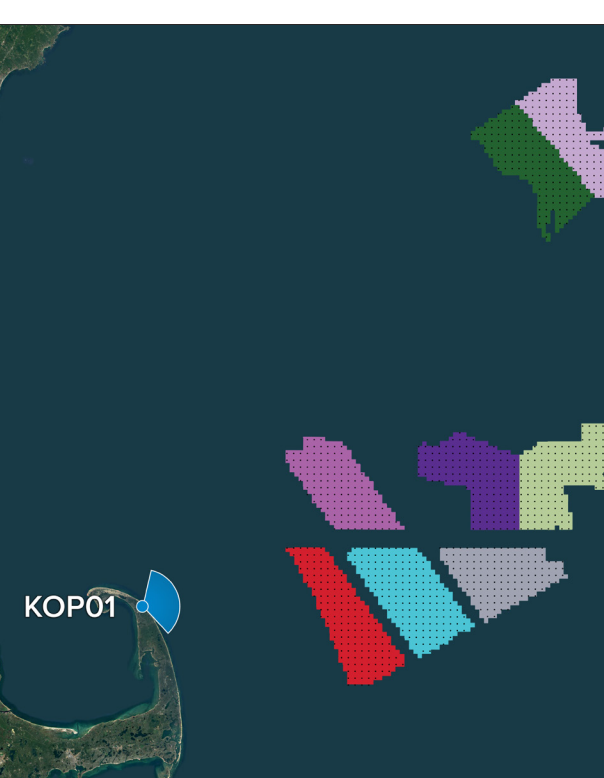
CORRECT VIEWING OF TRUEVIEW™ PHOTO SIMULATIONS



NOTES:
 Viewpoint locations have been precision surveyed by
VHB
 1805 Atlantic Avenue
 Manasquan, NJ 08736
 Heights are above mean sea level.
 Structure design and placement are subject to final engineering.
 No part of this photo simulation shall be altered in any way.

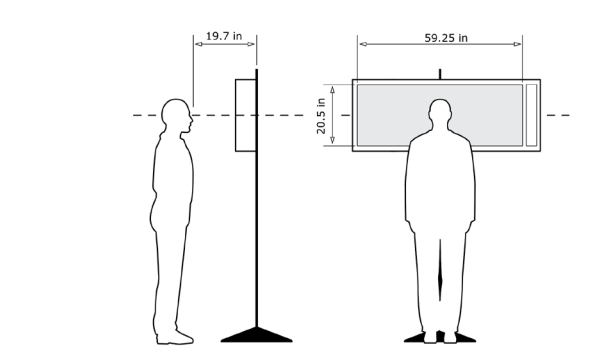
Photo Simulation Created Using
 TrueView™ Technology
 (Patent No.: US 8,184,906 B2)
 Provided by

05/17/2024 at 7:40 am - KOP1



Latitude: 42.0391417
 Longitude: -70.0619906
 Elevation of Viewpoint Position: 167.93
 Height of Camera Above Ground: 5.41
 Date of Photography: 05/17/2024 at 7:40 am
 Horizontal Field of View: 124°
 Vertical Field of View: 55°
 Distance to Nearest Turbine (mi): 26.24
 Distance to Furthest Visible Turbine (mi): 58.03

CORRECT VIEWING OF TRUEVIEW™ PHOTO SIMULATIONS



NOTES:

Viewpoint locations have been precision surveyed by
VHB
 1805 Atlantic Avenue
 Manasquan, NJ 08736
 Heights are above mean sea level.
 Structure design and placement are subject to final engineering.
 No part of this photo simulation shall be altered in any way.

Photo Simulation Created Using
 TrueView™ Technology
 (Patent No.: US 8,184,906 B2)
 Provided by



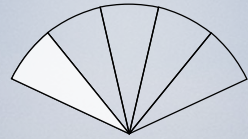
KOP 1, Highland Lighthouse, Morning, Heading 70° - Proposed View - Maximum Visibility

For on-screen display:
 Scale bar to be 4 inches wide
 Viewing distance 19.7 inches

05/17/2024 at 7:40 am - KOP1



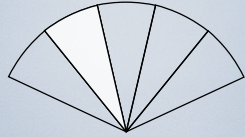
1 2 3 4 5



For on-screen display:
Scale bar to be 4 inches wide
Viewing distance 19.7 inches



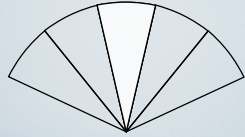
1 2 3 4 5



For on-screen display:
Scale bar to be 4 inches wide
Viewing distance 19.7 inches



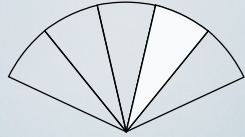
1 2 3 4 5



For on-screen display:
Scale bar to be 4 inches wide
Viewing distance 19.7 inches



1 2 3 4 5



For on-screen display:
Scale bar to be 4 inches wide
Viewing distance 19.7 inches



1 2 3 4 5



For on-screen display:
Scale bar to be 4 inches wide
Viewing distance 19.7 inches