



BOEM BUREAU OF OCEAN
ENERGY MANAGEMENT

Oregon Proposed Sale Notice Fisheries Meeting

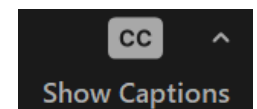
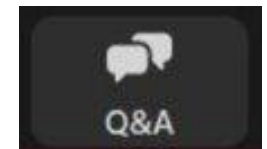
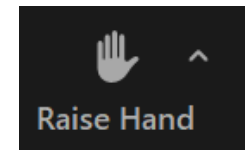
May 29, 2024

5:00 – 8:00 p.m. PT

For help with technical difficulties, please email cbaker@kearnswest.com for assistance.
The webinar will be recorded.

Zoom Instructions

- Public attendees will be muted throughout the webinar and will not be able to unmute themselves until the public comment portion of the agenda.
- Please use the Q&A pod to ask clarifying questions on the PSN.
 - Public comment will not be accepted through the Q&A feature.
 - Questions will be addressed during Q&A at 5:50 p.m. PT.
- Public attendees can share verbal comments during the public comment opportunity at 6:15 p.m. PT.
 - To enter the queue, use the “Raise Hand” button or press *9 on your phone. Please lower your hand once you are done speaking.
- Closed Captioning is available.
- For technical assistance requests, contact cbaker@kearnswest.com



zm Question and Answer

Welcome to Q&A
Questions you ask will show up here. Only host and panelists will be able to see all questions.

Type your question here...

Who can see your questions?

zm Question and Answer

All questions (1) My questions (1)

GG Gillian Garber-Yonts (You) 09:04 AM

I have a question

This question has been answered live

Type your question here...

Who can see your questions?

Webinar Chat

Ariella Dahlin (She/Her) to Everyone

AD Hi all, welcome to the webinar

Who can see your messages?

Chat disabled

Ariella Dahlin (She/Her)

Audio Settings ^

Chat

Raise Hand

Q&A

Show Captions

Leave

Webinar Participation Ground Rules

- Honor the agenda.
- Participate actively and respectfully.
- Respect differences of opinion and perspectives.
- Provide your name and affiliation each time you speak.
- Be mindful of your speaking time.

Agenda

Item
Welcome, Introductions, Agenda Review
Opening Remarks
Overview of Proposed Sale Notice
Q & A on the PSN
Public Comment Opportunity
<i>Please use the “raise hand” icon to enter the queue to provide verbal public comment on the PSN.</i>
Next Steps and Closing

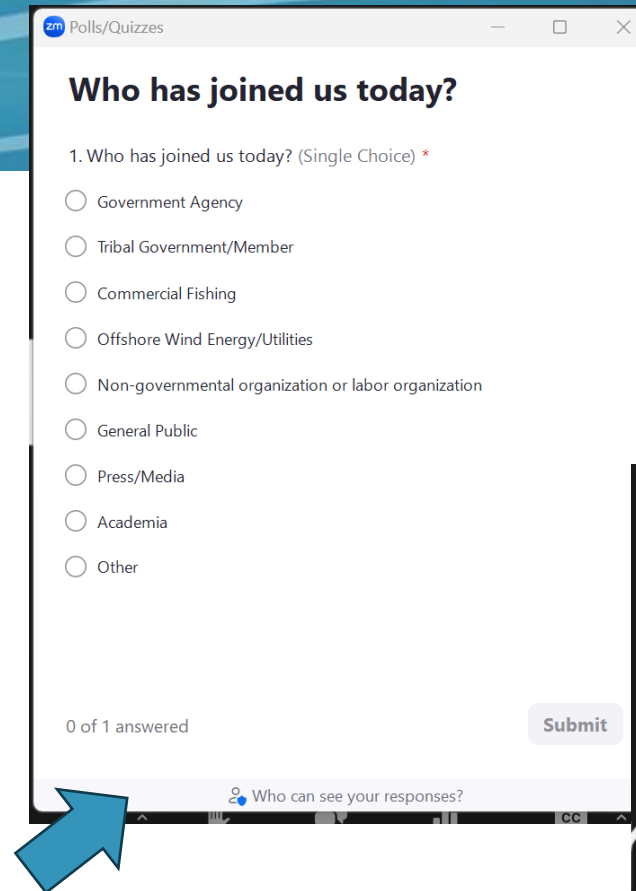
Zoom Poll

Poll questions:

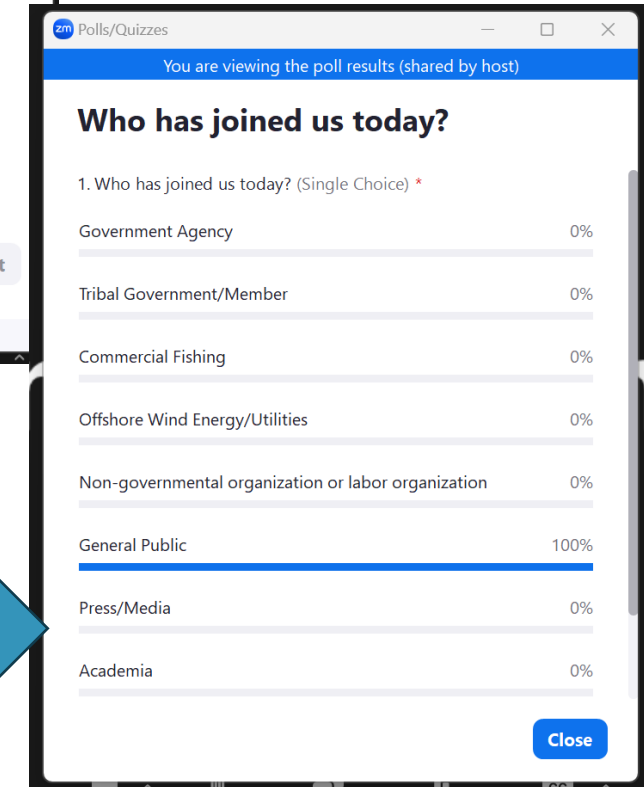
- Please share your affiliation.
- How many meetings on offshore wind have you attended?
- Do you plan on submitting verbal public comment today?

Poll instructions:

- A pop-up window will appear on your screen, please respond to the poll question
- Answers will be shown once everyone has had a chance to participate



The screenshot shows a Zoom poll window titled "Polls/Quizzes". The question is "Who has joined us today?" with a "(Single Choice)" asterisk. The options are: Government Agency, Tribal Government/Member, Commercial Fishing, Offshore Wind Energy/Utilities, Non-governmental organization or labor organization, General Public, Press/Media, Academia, and Other. At the bottom, it says "0 of 1 answered" and has a "Submit" button. A blue arrow points to the "Who can see your responses?" link at the bottom of the window.



BOEM Staff Present Today

- **Doug Boren**, Pacific Regional Director
- **Necy Sumait**, Office of Strategic Resources Regional Supervisor
- **Rick Yarde**, Office of the Environment Regional Supervisor
- **Jennifer Miller**, Renewable Energy Section Chief
- **Marty Heinze**, Leasing Economics Coordination Branch Chief
- **Jean Thurston-Keller**, Renewable Energy Specialist & Oregon Task Force Coordinator
- **Linette Makua**, NEPA Coordinator
- **John Romero**, Public Affairs Officer

Opening Remarks

Doug Boren, Pacific Regional Director



BOEM BUREAU OF OCEAN
ENERGY MANAGEMENT

Oregon Proposed Sale Notice Fisheries Public Meeting

Jean Thurston-Keller, Renewable Energy Specialist

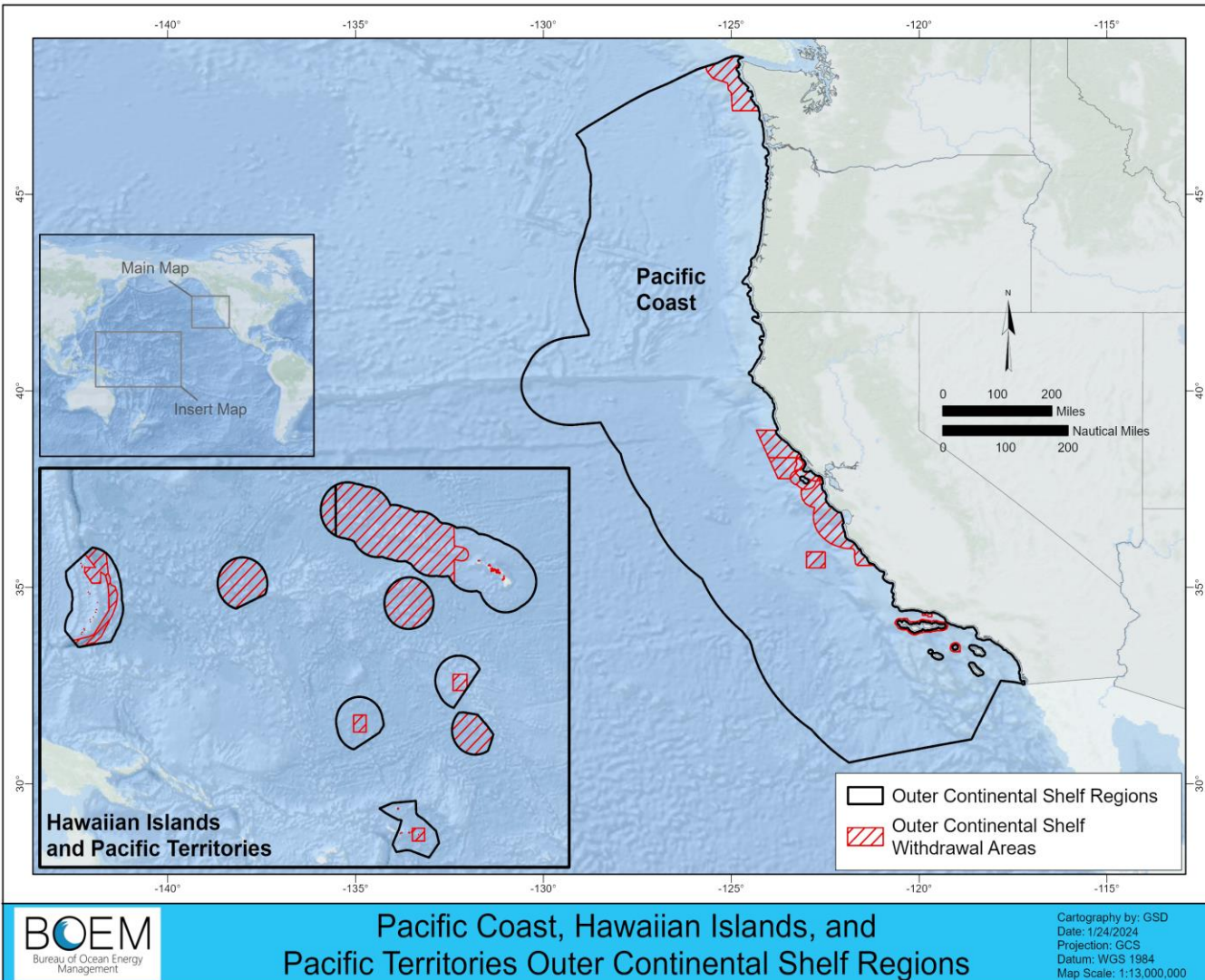
Pacific Region | May 29, 2024

Bureau of Ocean Energy Management (BOEM): Mission

Manage the development of U.S. Outer Continental Shelf (OCS) energy, mineral, and geological resources in an environmentally and economically responsible way

Jurisdiction of BOEM Pacific Region

- OCS generally extends from 3 to 200 nautical miles off the West Coast, Hawaii, and the Pacific Territories
- Excludes National Marine Sanctuaries, Marine National Monuments, National Wildlife Refuges, and National Parks

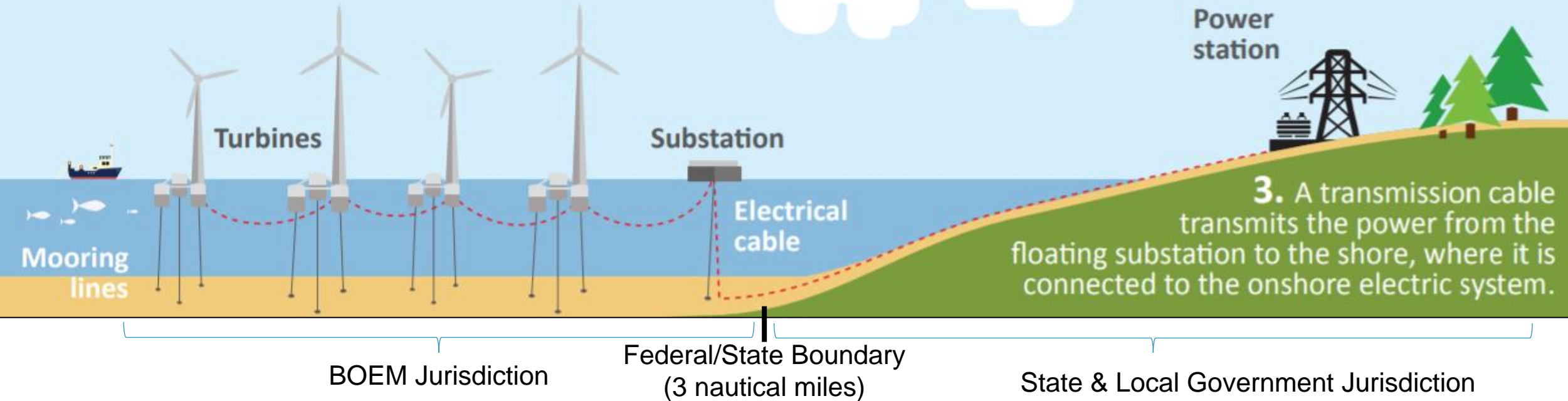


Floating Offshore Wind Energy Farm Basics

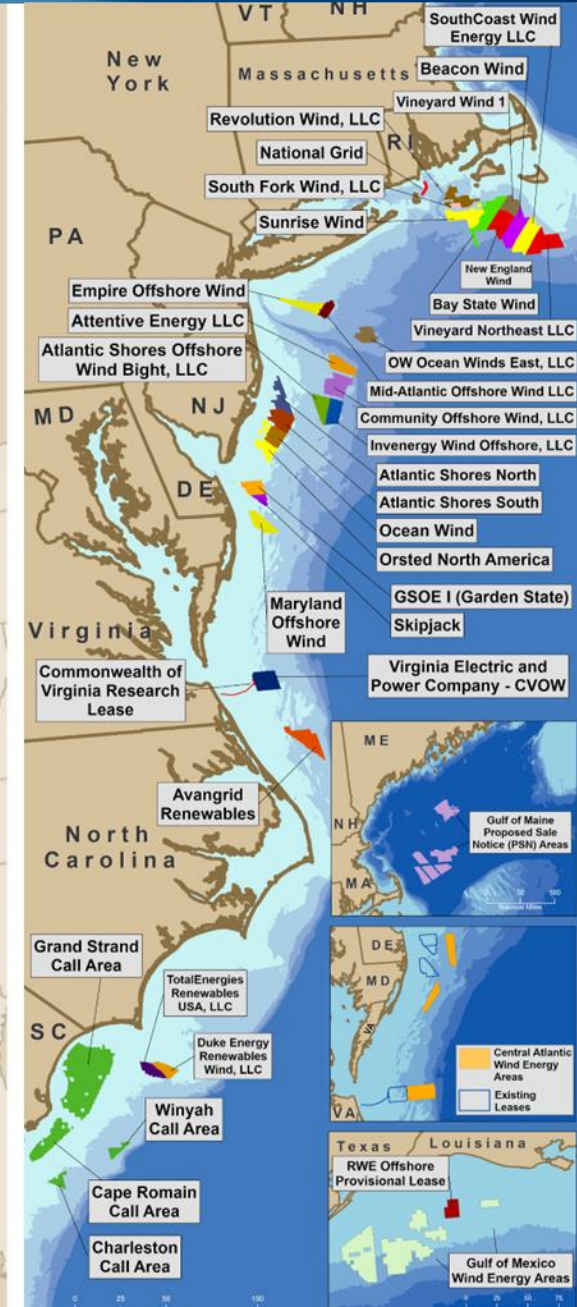
1. Floating wind turbines are configured in an array to optimize the capture of wind energy.

2. Energy captured by the turbines is conveyed through a transmission line to a floating substation.

3. A transmission cable transmits the power from the floating substation to the shore, where it is connected to the onshore electric system.



Renewable Energy Program by the Numbers

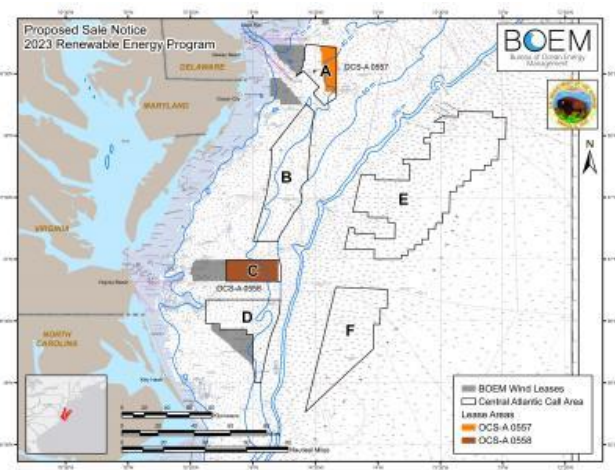
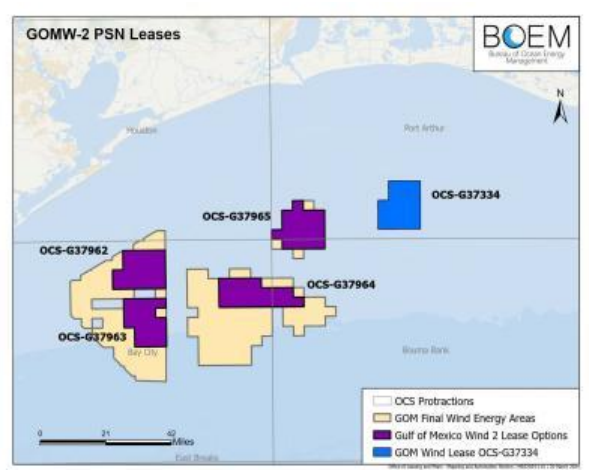
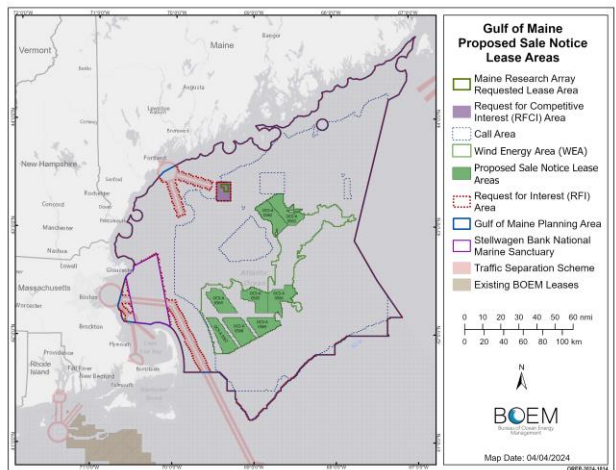
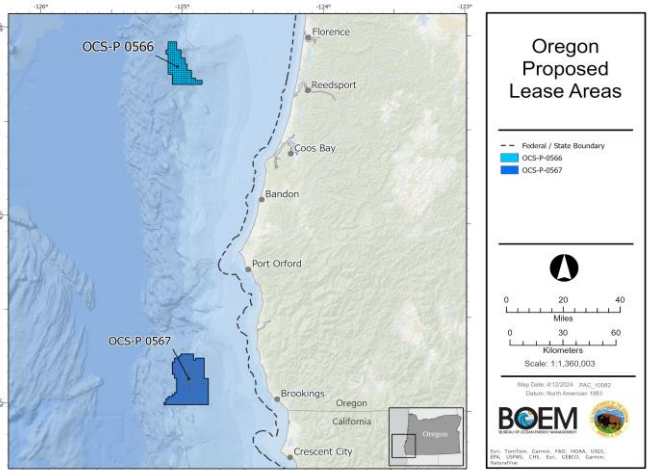




Recent Announcements

- Final Rule to Streamline and Modernize Offshore Renewable Energy Development
- Five Year Offshore Wind Leasing Schedule
- Proposed Lease Sales In 2024: Oregon, Gulf of Maine, Gulf of Mexico, and Central Atlantic
- Programmatic Environmental Impact Statement for the existing California Offshore Wind Lease Areas
- Draft Environmental Assessment For Offshore Wind Leasing in Oregon WEAs

Year	U.S. Outer Continental Shelf Region
2024	Central Atlantic, Gulf of Maine, Gulf of Mexico, and Oregon
2025	Gulf of Mexico
2026	Central Atlantic
2027	Gulf of Mexico and New York Bight
2028	California, a U.S. Territory, Gulf of Maine, and Hawaii





Staged Offshore Wind Energy Authorization Process



Planning & Analysis ~ 2 YEARS

- Intergovernmental Task Force
- Request for Information or Call for Information and Nominations
- Area Identification
- Environmental Reviews

Leasing ~ 1-2 YEARS

- Publish Leasing Notices
- Conduct Auction or Negotiate Lease Terms
- Issue Lease(s)

Site Assessment UP TO 5 YEARS

- Site Characterization
- Site Assessment Plan

Construction & Operations ~ 3 YEARS (+25)

- Construction & Operations Plan
- Facility Design Report and Fabrication & Installation Report
- Decommissioning
- Environmental and Technical Reviews

BOEM coordinates and consults with affected Tribal, State, and local governments and other Federal agencies
Multiple opportunities for public input

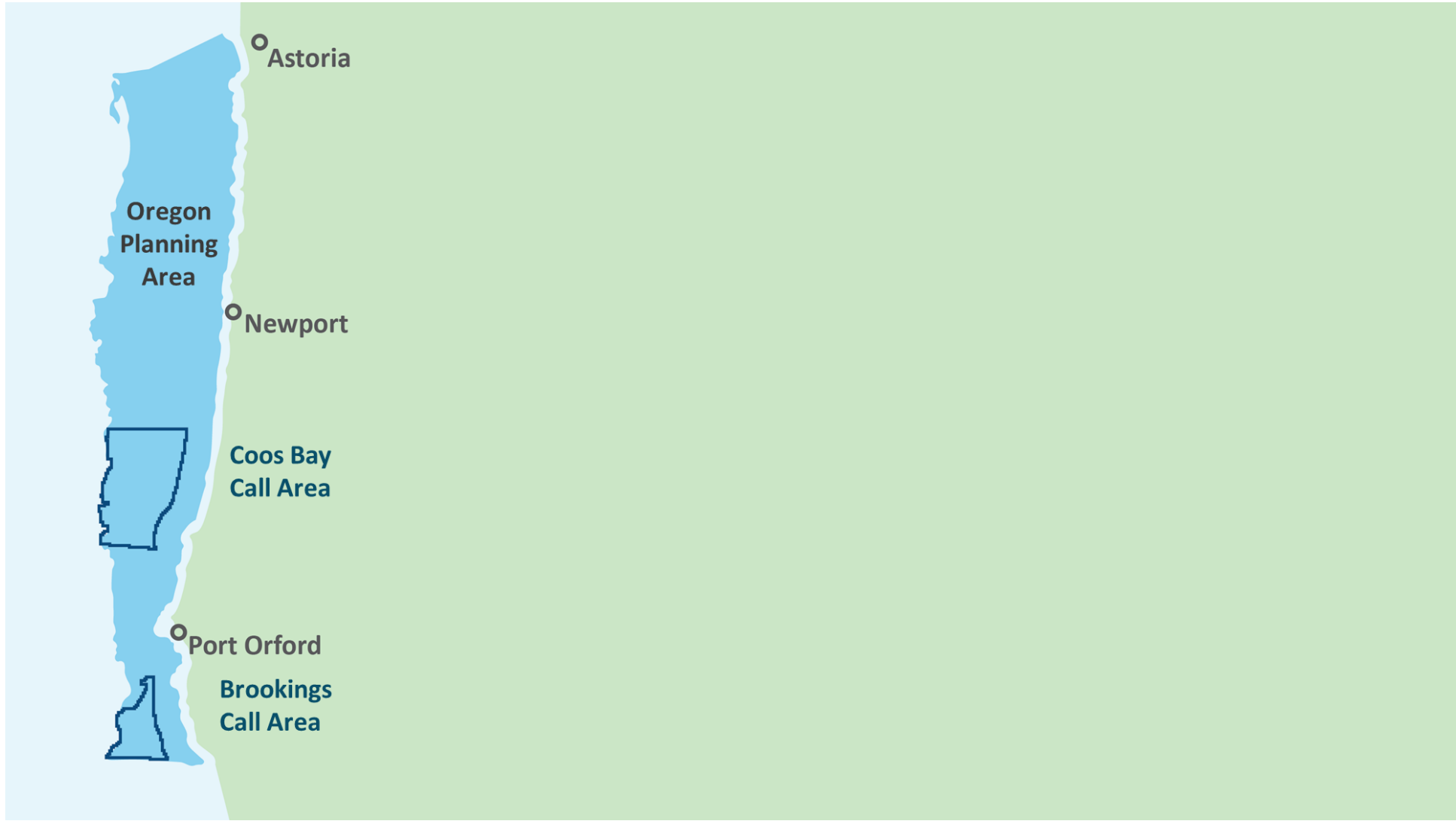


Offshore Wind Planning in Oregon

- **September 2019: Coordinated offshore wind energy planning**
 - Created planning area with input from State and the Task Force
 - Public Outreach Plan developed
 - Outreach and Engagement in partnership with Oregon
- **April 2022: Development and publication of a Call for Information and Nominations**
- **September 2022: New spatial modeling tool to analyze the Call Areas – NOAA NCCOS**
- **August 2023: Added new step in BOEM leasing process – Draft Wind Energy Areas for Public Comment**
 - During comment period, BOEM held Task Force meeting, fishing webinar, tribal meetings and public meetings
- **February 2024: Final Wind Energy Areas**
 - Published Notice of Intent to Prepare Environmental Assessment
- **May 2024: Proposed Sale Notice with proposed bidding credits and lease stipulations**

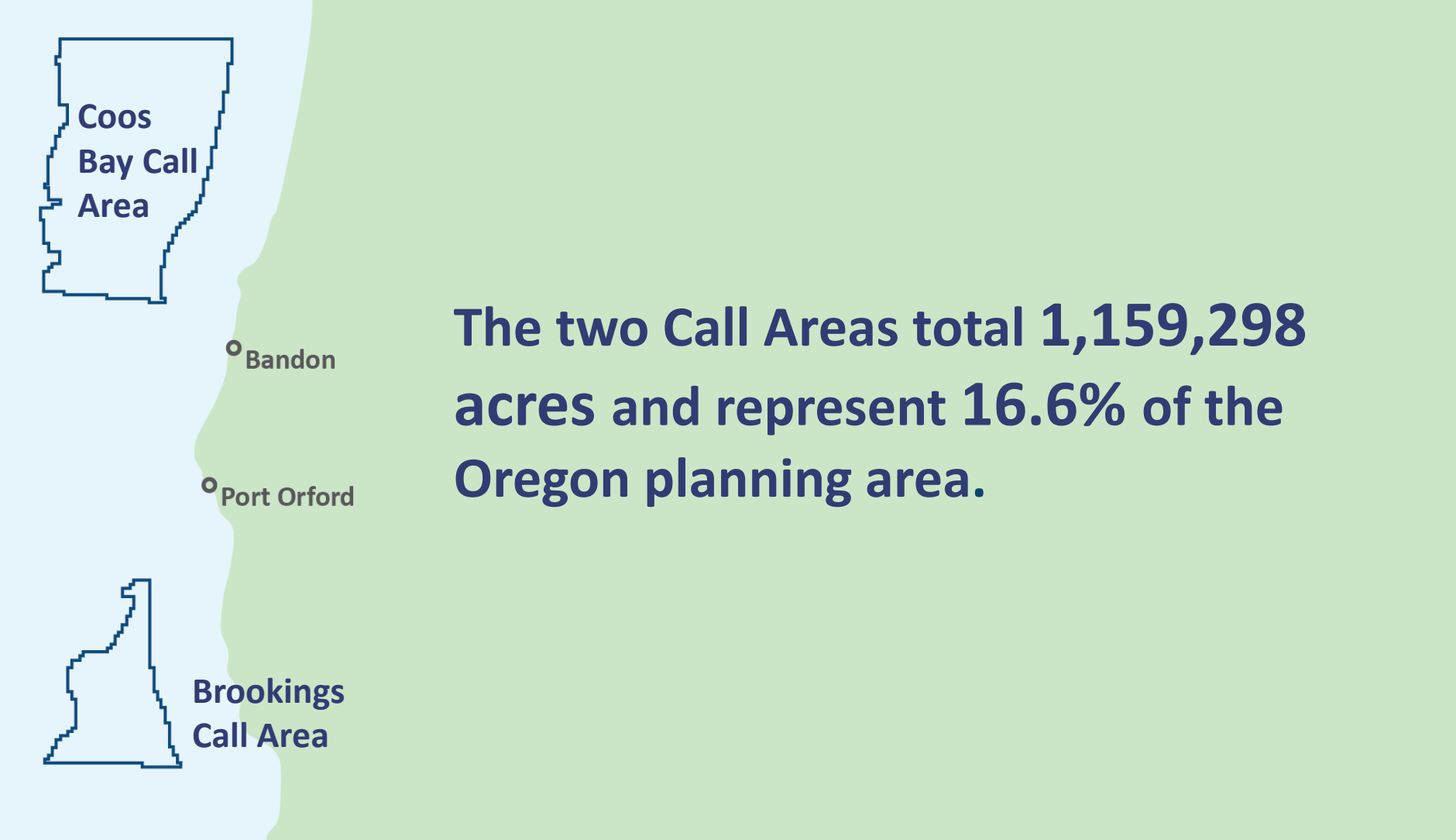


Oregon Planning Area for Offshore Wind – September 2019





BOEM Call Areas – April 2022



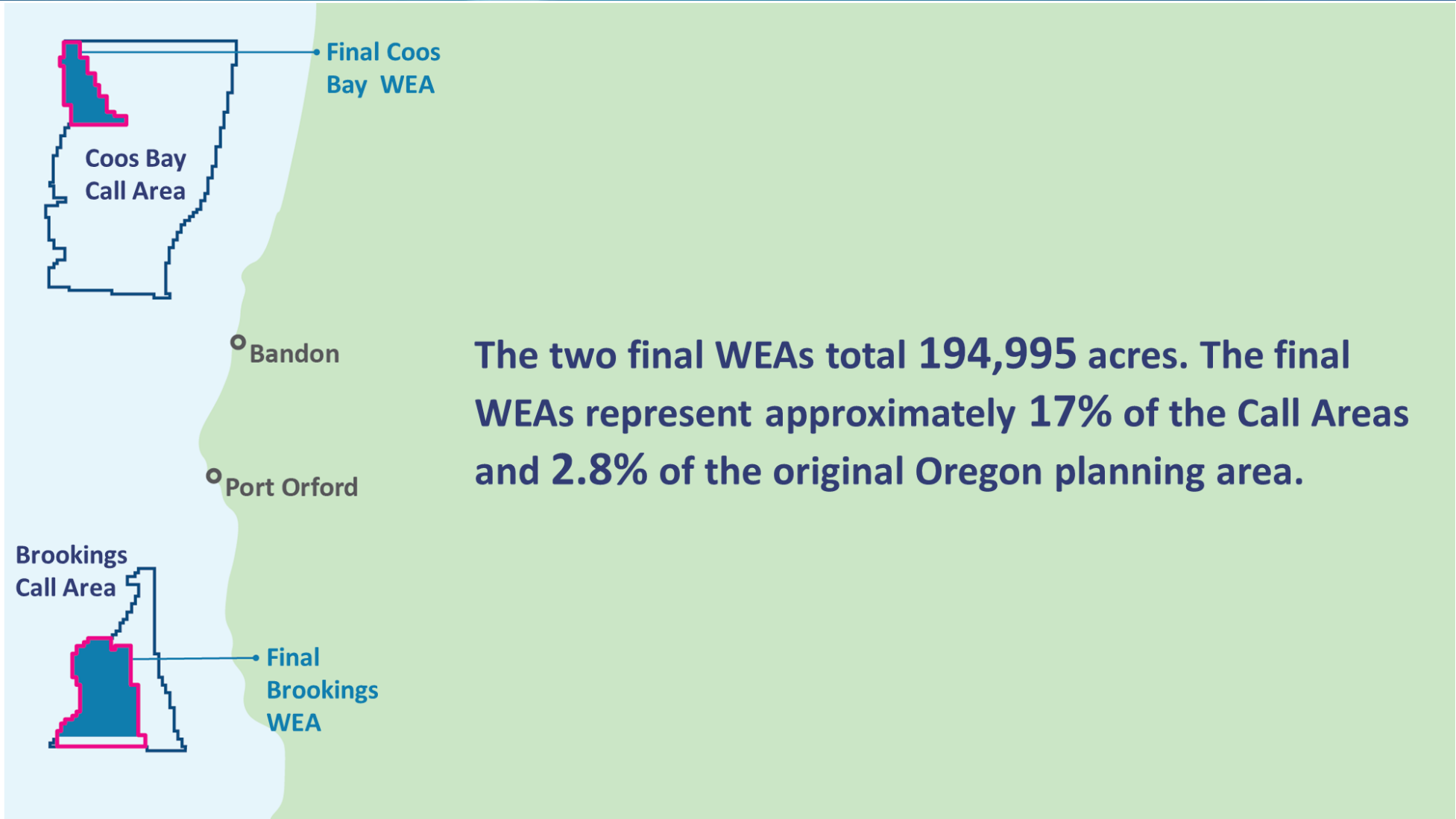


BOEM Draft Wind Energy Areas – August 2023



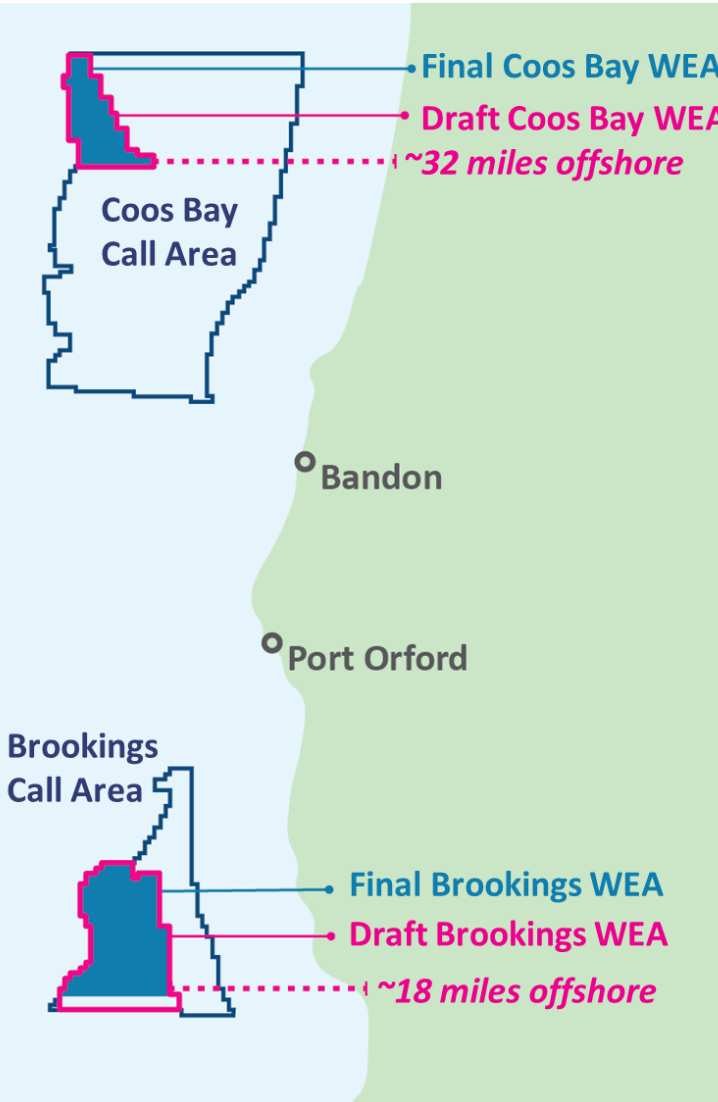


BOEM Final Wind Energy Areas – February 2024





Summary: Planning Area -> Call -> Draft WEAs -> Final WEAs

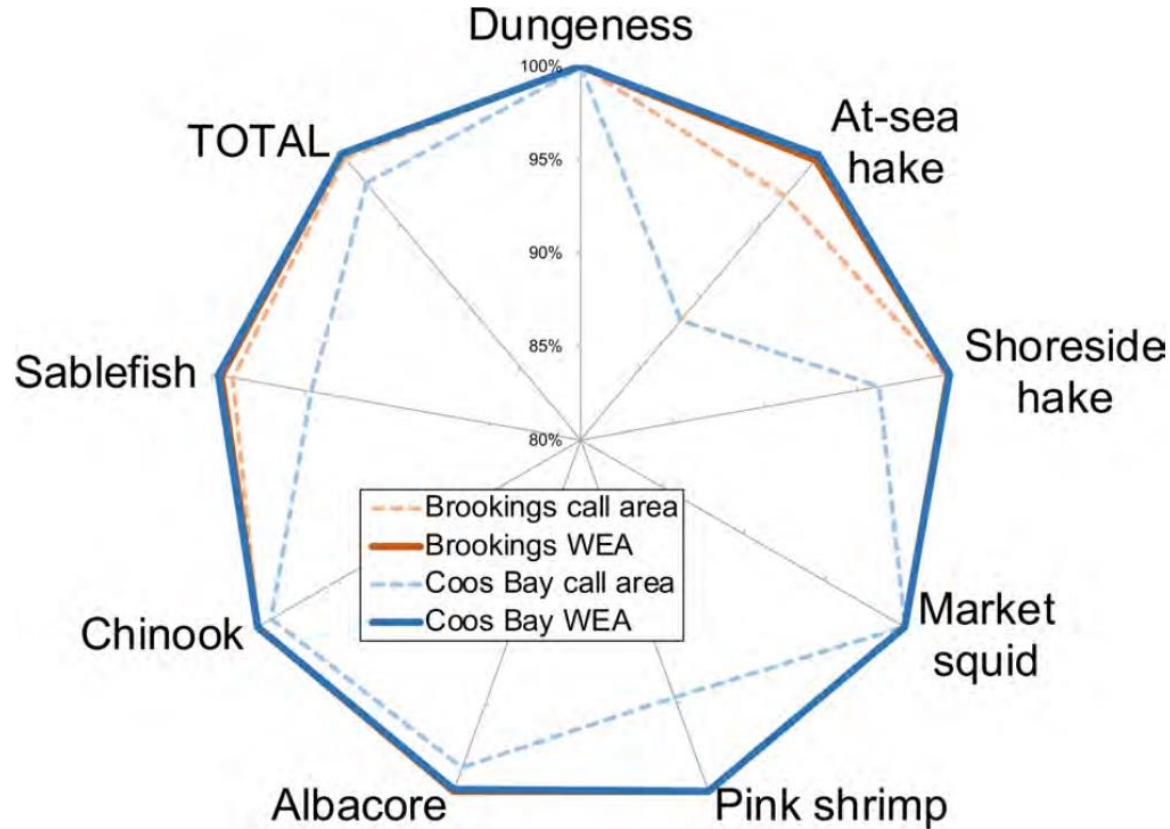


The two Call Areas total 1,159,298 acres and represent **16.6%** of the Oregon planning area.

The two draft WEAs total 219,568 acres. The draft WEAs represent approximately **19%** of the Call Areas and **3.1%** of the original Oregon planning area.

The two final WEAs total 194,995 acres. The final WEAs represent approximately **17%** of the Call Areas and **2.8%** of the original Oregon planning area.

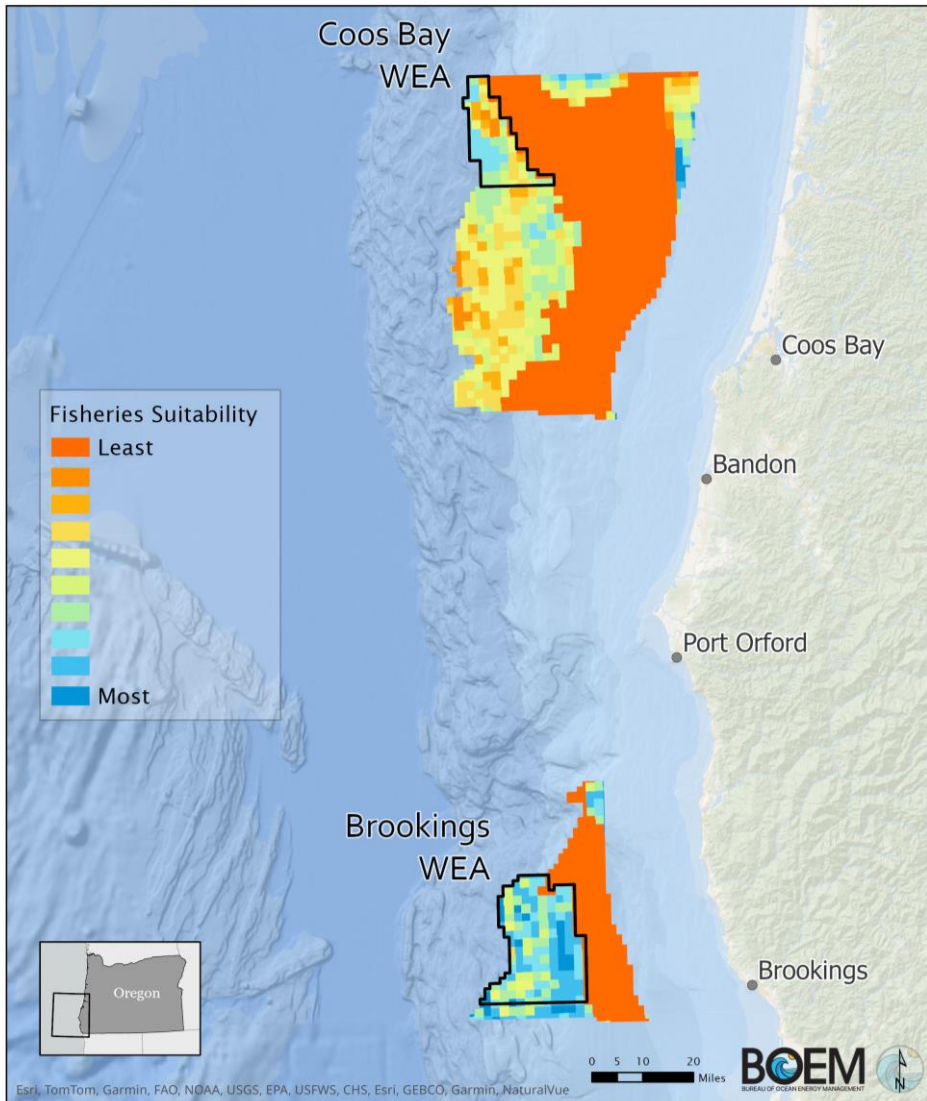
Examples of Input Used from Oregon Draft WEA Comment Period: Commercial Fishing



- For the top seven fishery species that account for ~80% of commercial fisheries revenue from 2011 to 2020 on the West Coast, 0.11% of that revenue is caught within the WEAs (source: NMFS)
- No recommended changes from Draft WEAs to Final WEAs related to fishing

*Radar plot of the proportion of revenue from 2011-2020 captured **outside** of the original Brookings and Coos Bay Call Areas and **outside** the Draft WEAs for the seven West Coast fisheries species listed. Source: NOAA comment letter BOEM-2023-0033-0508*

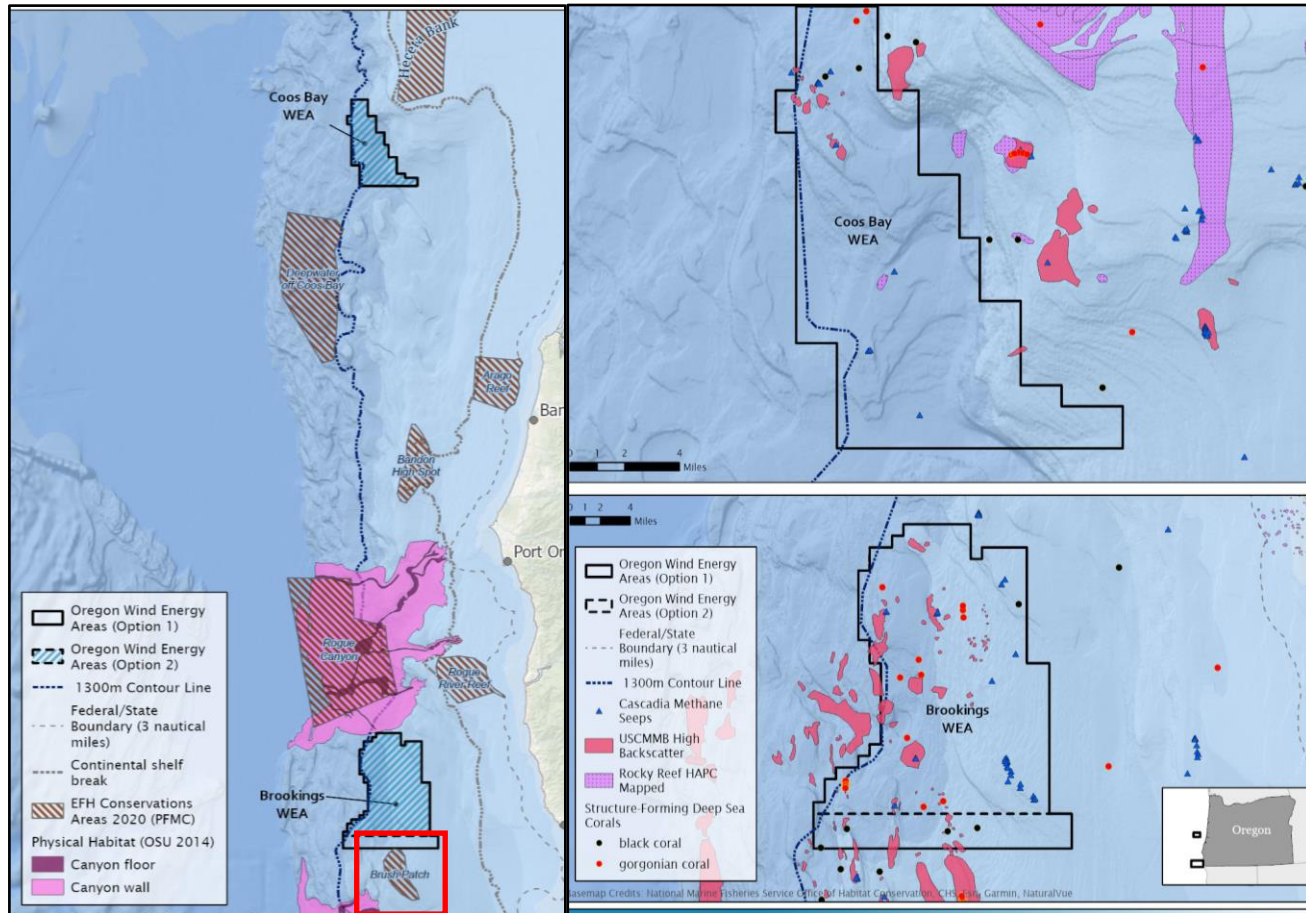
Fishing and the Oregon Wind Energy Areas



- NMFS and ODFW recommended BOEM exclude the region (dark orange) containing grid cells that account for 75% of the highest ranked importance values for 4 trawl fisheries
- BOEM avoided 98% of the NMFS and ODFW recommended exclusion area (dark orange)
- Recommendation for exclusion areas was based on trawl fisheries since they are the most likely to conflict with OSW

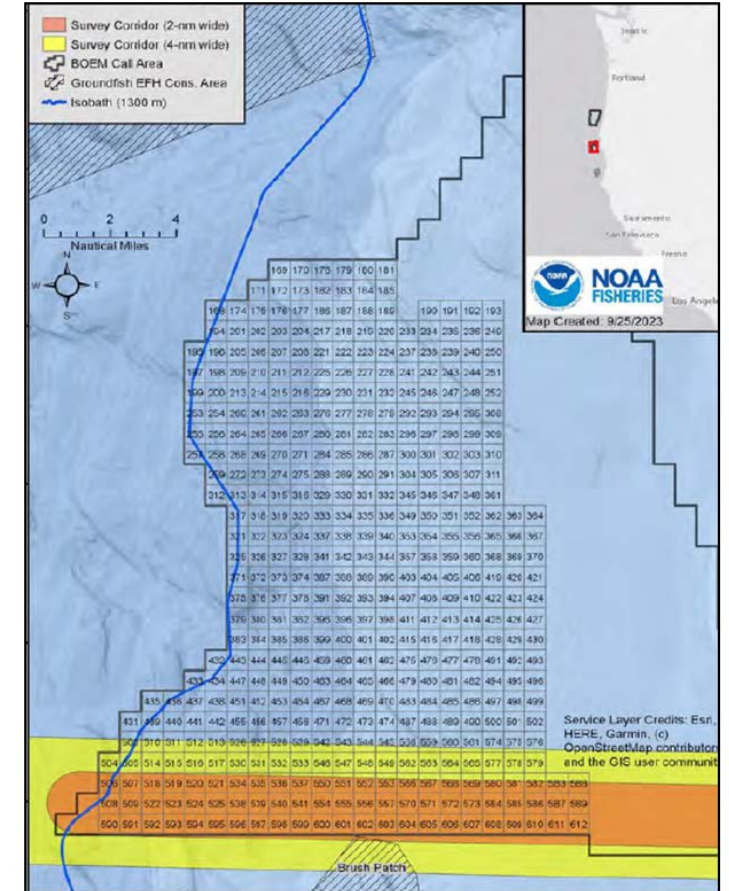
Key Considerations for Final Wind Energy Area Identification

○ Sensitive seafloor habitats



Brush Patch

○ NOAA Scientific Surveys





Oregon Wind Energy Areas Summary

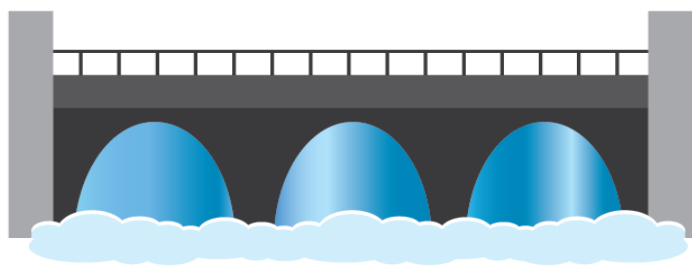
Oregon Wind Energy Areas produce



**3.1
GW**

and enough energy to power

Approximately 2.6X the energy capacity of Bonneville Dam

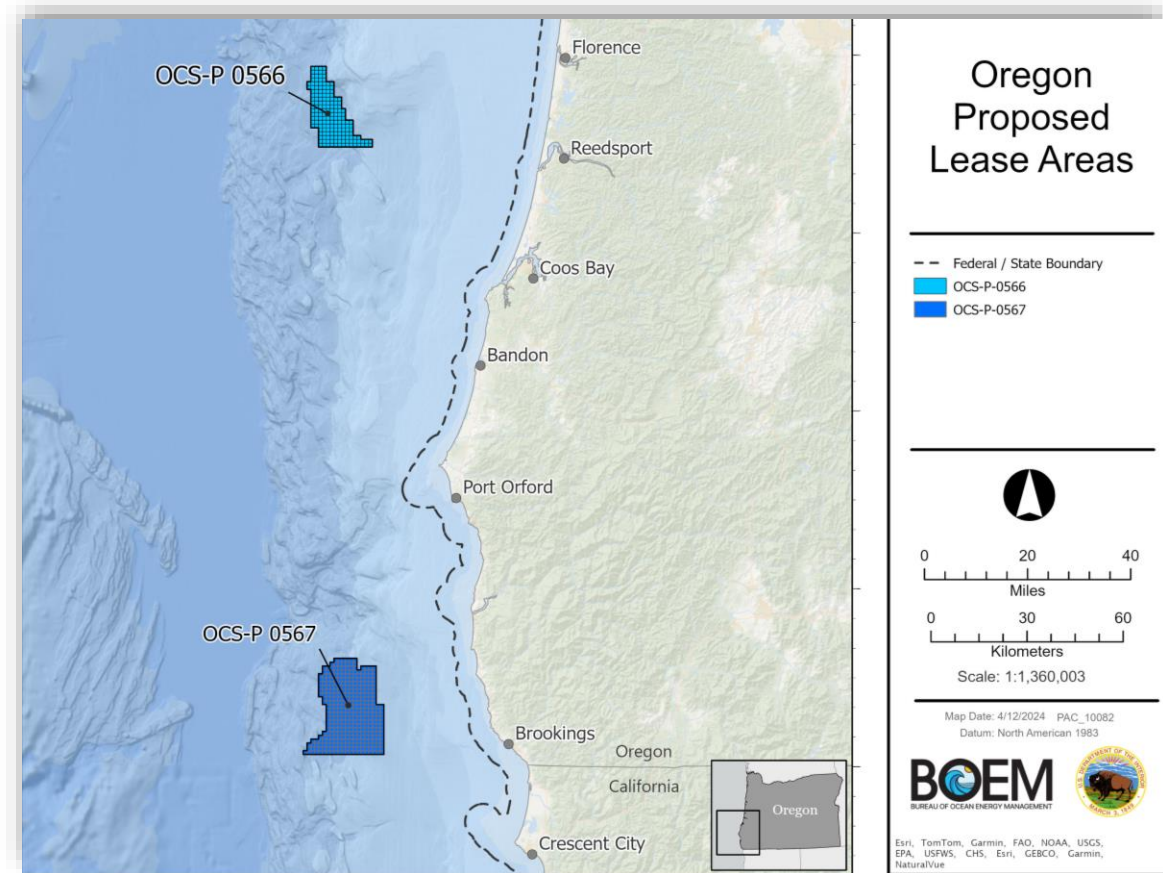


one million homes!



Proposed Sale Notice

- **Published in the Federal Register on May 1, 2024**
 - 60-day public comment period
 - Open until July 1, 2024, **8:59pm PT/11:59pm ET**
 - www.regulations.gov, Docket ID BOEM-2024-0022
- **PSN Package Describes:**
 - Two proposed lease areas
 - Proposed lease with potential stipulations
 - Proposed bidding credits
 - Bidders Financial Form (BFF) requirements
 - BFF Addendum
 - Proposed Auction format and procedures
 - Process for lease issuance





Proposed Renewable Energy Leases in Oregon

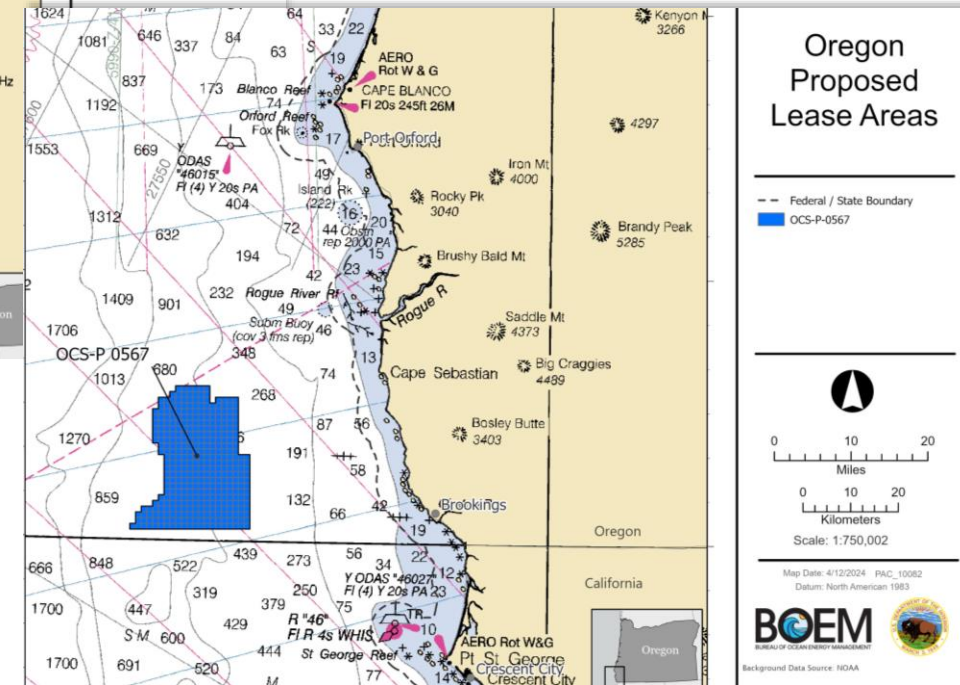
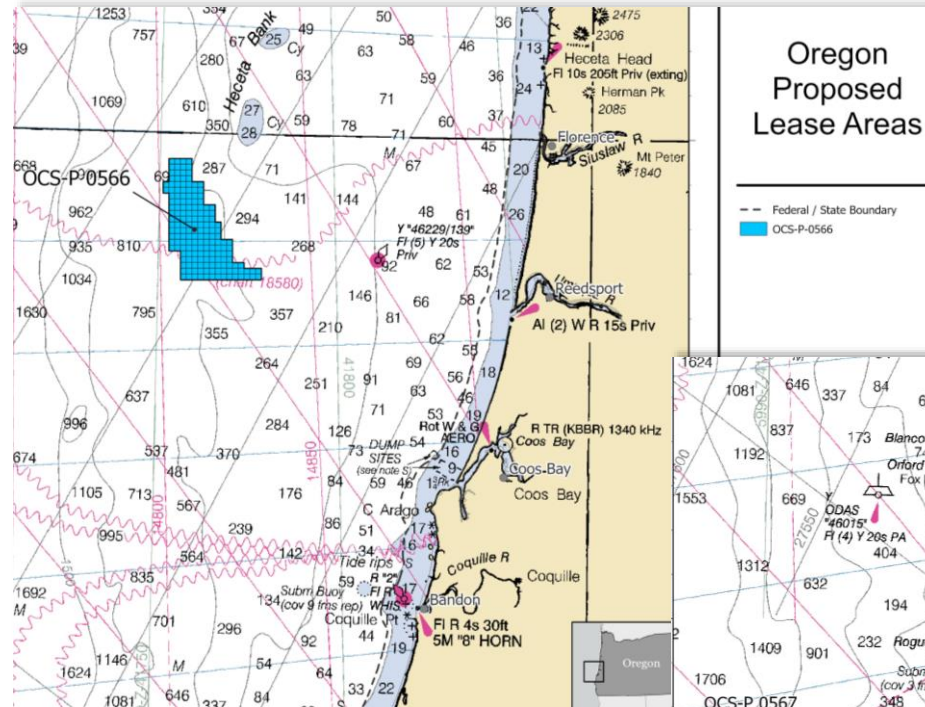
Proposed Lease Areas

Coos Bay Lease Area

- Capacity: 991 MW
- Acres: 61,203
- Depth: 635 – 1,414 meters
- Homes Powered: ~346,752

Brookings Lease Area

- Capacity: 2,166 MW
- Acres: 133,792
- Depth: 567 – 1,531 meters
- Homes Powered: ~758,012





Proposed Lease

- Rights of the Lessee: To submit to BOEM for approval a Site Assessment Plan and/or a Construction and Operations Plan. A lease does not, by itself, authorize any construction within the lease areas
- Terms: Lease periods tied to activities required to develop the lease
- Payments: Rent and Operating Fees
- Financial Assurance: Lessee must provide and maintain financial assurance to meet all accrued lease obligations
 - Initial financial assurance in the amount of 12 months rent, due before lease is executed
 - Additional financial assurance, with amount(s) determined by BOEM
 - Decommissioning financial assurance, due before construction or funded with an approved decommissioning amount
- Lease-specific terms, conditions and stipulations: Addendum C



Proposed Lease Requirements for Communications, Engagement, and Reporting

- Three required communications plans:
 - Native American Tribes Communications Plan
 - Agency Communications Plan
 - Fisheries Communications Plan
- **Engagement:** The Lessee will make reasonable efforts to engage with Tribes and parties that may be potentially affected by the Lessee's project activities on the OCS, including, but not limited to:
 - Coastal communities
 - Commercial and recreational fishing industries and stakeholders
 - Educational and research institutions
 - Environmental and public interest non-governmental organizations
 - Federal, State, and local agencies
 - Tribes
 - Mariners and the maritime industry
 - Ocean users
 - Submarine cable operators
 - Underserved communities, as defined in Section 2 of Executive Order 13985
- **Coordinated Engagement:** To the maximum extent practicable, the Lessee must coordinate engagement activities with other regional lessees...to decrease the communication and consultation burden
- **Progress Report:** Every 6 months, describe overall progress, document engagement

Native American Tribes Communications Plan



Native American Tribes Communications Plan (NATCP)

- Does not replace BOEM's consultation obligations or policies
- Lessees must engage with interested Tribes in the development of the NATCP
- Describes Lessee's strategies for communicating
- Should include protocols for unanticipated discovery of any potential pre-contact archaeological resources
- Must include contact information for Lessee's Tribal Liaison
- Designed to enhance communication and provide a record of discussions for transparency in the process

All draft plans to BOEM and interested Tribes, Agencies and Fisheries, respectively, for review and comment, and meetings on draft plans within 120 days of lease execution. Extension request provision.

Agency Communications Plan (ACP)

- Describes Lessee's strategies for communicating with federal, state, and local agencies with authority related to the Lease Area
- Intended to improve quality and efficiency of agency decision-making processes
- Must include contact information for Lessee's Agency Liaison



All draft plans to BOEM and interested Tribes, Agencies and Fisheries, respectively, for review and comment, and meetings on draft plans within 120 days of lease execution. Extension request provision.

Fisheries Communication Plan

Fisheries Communications Plan (FCP)

- Describes Lessee's strategies for communicating with fisheries stakeholders
- Must include a process to file a complaint with the Lease Operator and see the replacement or compensation for any lost gear
- Must include a Lessee's Fisheries Liaison contact information



All draft plans to BOEM and interested Tribes, Agencies and Fisheries, respectively, for review and comment, and meetings on draft plans within 120 days of lease execution. Extension request provision.



BOEM BUREAU OF OCEAN
ENERGY MANAGEMENT

Auction Format and Procedures

Marty Heinze, Economist

Pacific Region | May 29, 2024

Auction Format

- The Oregon auction is proposed to include the following.
 - Limit of one lease per bidder
 - Multiple-factor auction format
 - Bidding system would be a combination of monetary and non-monetary factors.
 - The non-monetary factors would be bidding credits for commitments to financial investments in specific initiatives that further OCSLA's objectives.
- There are currently four companies qualified to bid in the Oregon Sale:
 - Avangrid Renewables LLC
 - BlueFloat Energy Oregon LLC
 - OW North America Ventures LLC
 - U.S. Mainstream Renewable Power Inc

High Bonus Bid Determines Lessee

- Lease awarded to the highest bidder
 - BOEM would start the auction at the minimum bid price for the Lease Area and increase prices incrementally until no more than one active bidder per Lease Area remains in the auction.
- High bid is a cash bonus, or a cash bonus combined with a bidding credit
- Proposed Bidding Credit(s)
 - Contribution(s) to workforce development or supply chain development (15%)
 - Lease Area Use CBA (5%)
 - General CBA (5%)
- Commitment to the bidding credit will be identified on the Bidders Financial Form (BFF).
- Any bidding credits offered will be described in the FSN and the lease.



Bidding Credits – Overview



- **15 percent non-monetary bid credit for a contribution to workforce training and supply chain development for floating offshore wind industry**
- **5 percent non-monetary bid credit for Lease Area Use**
- **5 percent non-monetary bid credit for a General CBA**



Bidding Credit – Supply Chain and Workforce Development



- **15 percent (15%) non-monetary bid credit**
- Must commit to contributions for domestic floating offshore wind supply chain development, workforce training or a combination of both
- Domestic supply chain development may include:
 - Manufacturing of components and sub-assemblies
 - Grants to help U.S. manufacturers to re-tool or certify
 - Port infrastructure related to floating offshore wind
 - Development of Jones Act-compliant vessels
- Workforce training may include:
 - Union apprenticeships
 - Labor management training partnerships
 - Technical training programs in manufacturing / assembling
 - Maritime training for vessel crews
 - Training in skills that support floating offshore wind projects



Bidding Credit – Lease Area Use Community Benefit Agreements

- **5 percent (5%) non-monetary bid credit**
- Must demonstrate commitment to execute a community benefit agreement (CBA) with groups who use the geographic space of the lease area or who use resources harvested from that geographic space expected to be impacted by development
- Must address impacts to impacted community arising from lease development
- Must specify any monetary, material or other benefits provided by Lessee to impacted community, including any mitigation or other compensatory measures such as establishment of any special purpose funds and mechanisms through which funds would be dispersed





Bidding Credit – General Community Benefits Agreement

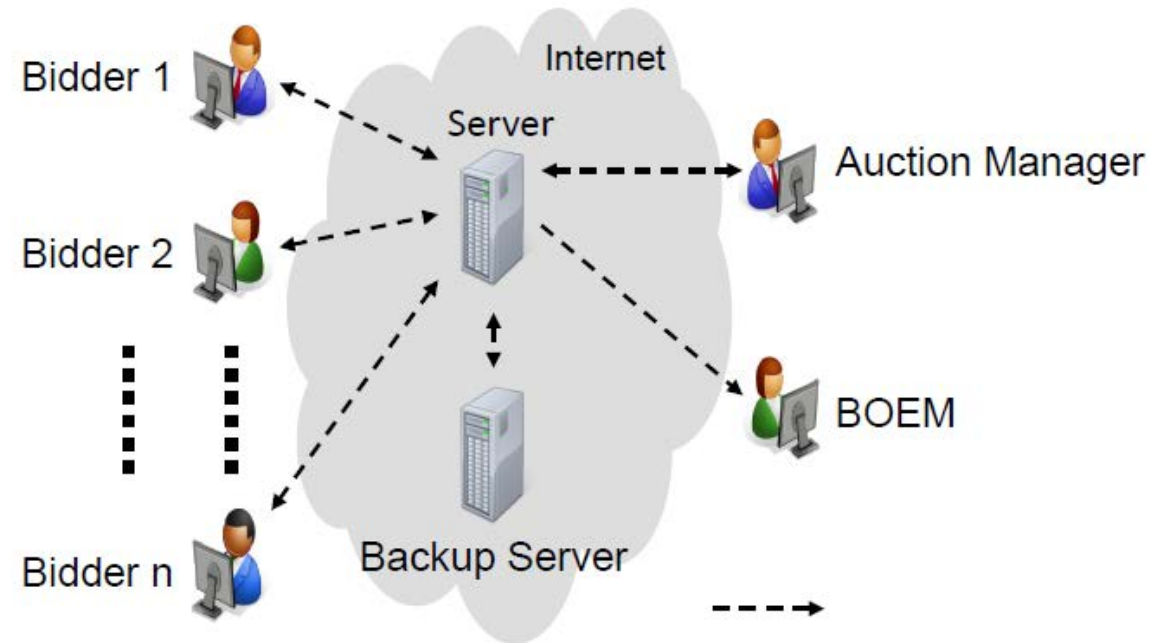
- **5 percent (5%) non-monetary bid credit**
- Must demonstrate commitment to execute CBA with one or more communities, Tribes or a community or stakeholder groups expected to be affected by the potential impacts on the marine, coastal and/or human environment
 - May include impacts from/to visual or cultural resources
 - Impacts from activities resulting from lease development not otherwise addressed by the Lease Area Use CBA





Before the Auction (potential bidders)

1. Auction Seminar June 12th, 9am – 12pm (PST), 12 – 3pm (EST)
2. Company Qualifications
3. Bidder Financial Forms Due to BOEM
 - Conceptual Strategies for Bidding Credits
4. Bid Deposits Paid
5. Mock Auction
 - Notification of Bidding Credit Eligibility
6. Live Auction





BOEM BUREAU OF OCEAN
ENERGY MANAGEMENT

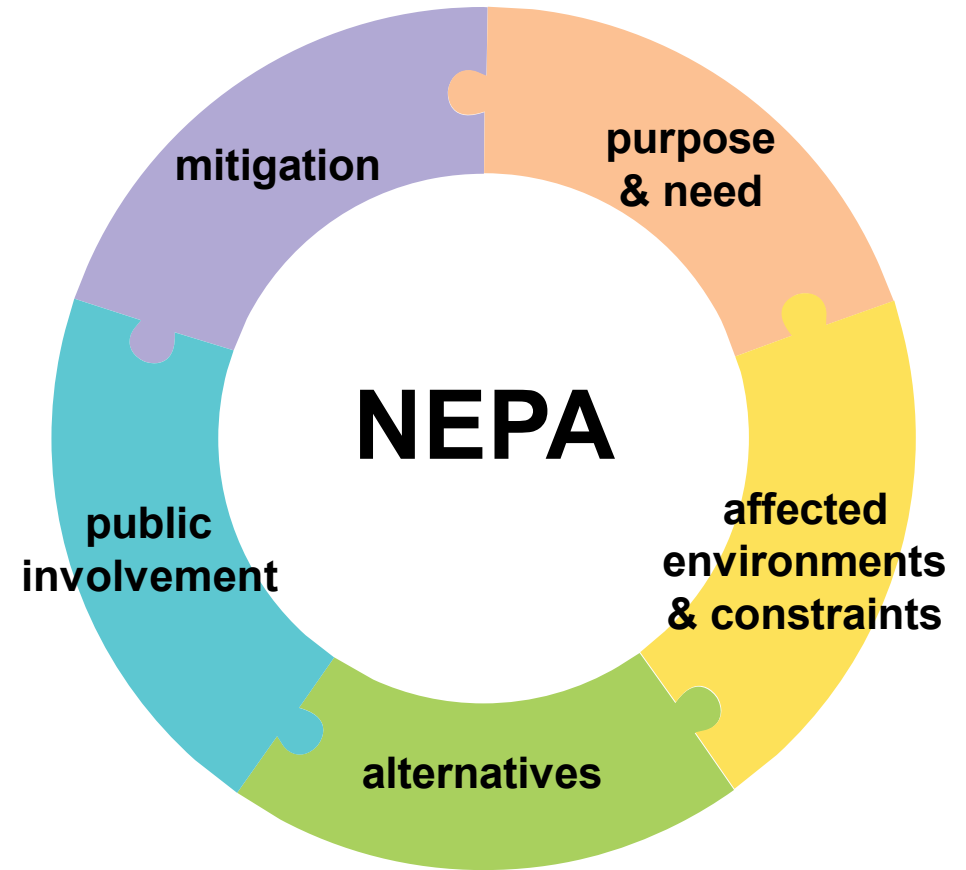
Environmental Review Process

Linette Makua, Environmental Protection Specialist

Pacific Region | May 29, 2024

BOEM is guided by the National Environmental Policy Act (NEPA)

- **NEPA** is a procedural law intended to ensure that Federal agencies consider the environmental impacts of their actions in the decision-making process.
- **Environmental Assessments** (EA) are prepared for a proposed action that is not likely to have a significant effect (40 CFR 1501.5).
- This Environmental Assessment is a review of potential impacts associated with **lease issuance**, including **site assessment and site characterization activities**.



Resource Assessment

Each resource is presented in the EA according to its **affected environment** and **potential impacts** to the affected environment that could occur as a result of **leasing, site assessment**, and **site characterization**.



- Geology
- Air Quality
- Marine and Coastal Habitats and Associated Biotic Assemblages
- Marine Mammals and Sea Turtles
- Coastal and Marine Birds
- Socioeconomics
- Commercial Fishing
- Recreation and Tourism
- Environmental Justice
- Tribes and Tribal Resources
- Historic Properties
- Cumulative Impacts



BOEM BUREAU OF OCEAN
ENERGY MANAGEMENT

Environmental Review Process

Jean Thurston-Keller, Renewable Energy Specialist

Pacific Region | May 29, 2024



Upcoming Public Input Opportunities

Upcoming public meetings:

- **May 30, 2024: PSN Public webinar**
 - Virtual meeting, 5 – 8 p.m.
- **June 5, 2024: EA Public webinar**
 - Virtual meeting, 4 p.m.
- **Agenda and registration information available at:**
www.boem.gov/oregon



BOEM documents open for public comment:

- **May 1 – June 14, 2024: Draft Environmental Assessment**
 - Link: www.regulations.gov, enter docket ID: BOEM-2023-0065
- **May 1 – July 1, 2024: Proposed Sale Notice**
 - Link: www.regulations.gov, enter docket ID: BOEM-2024-0022



Next Steps

Draft Environmental Assessment (EA)

- 44-day comment period open until June 14, 2024

Proposed Sale Notice (PSN)

- 60-day comment period open until July 1, 2024

Publish Final Environmental Assessment

- July / August 2024

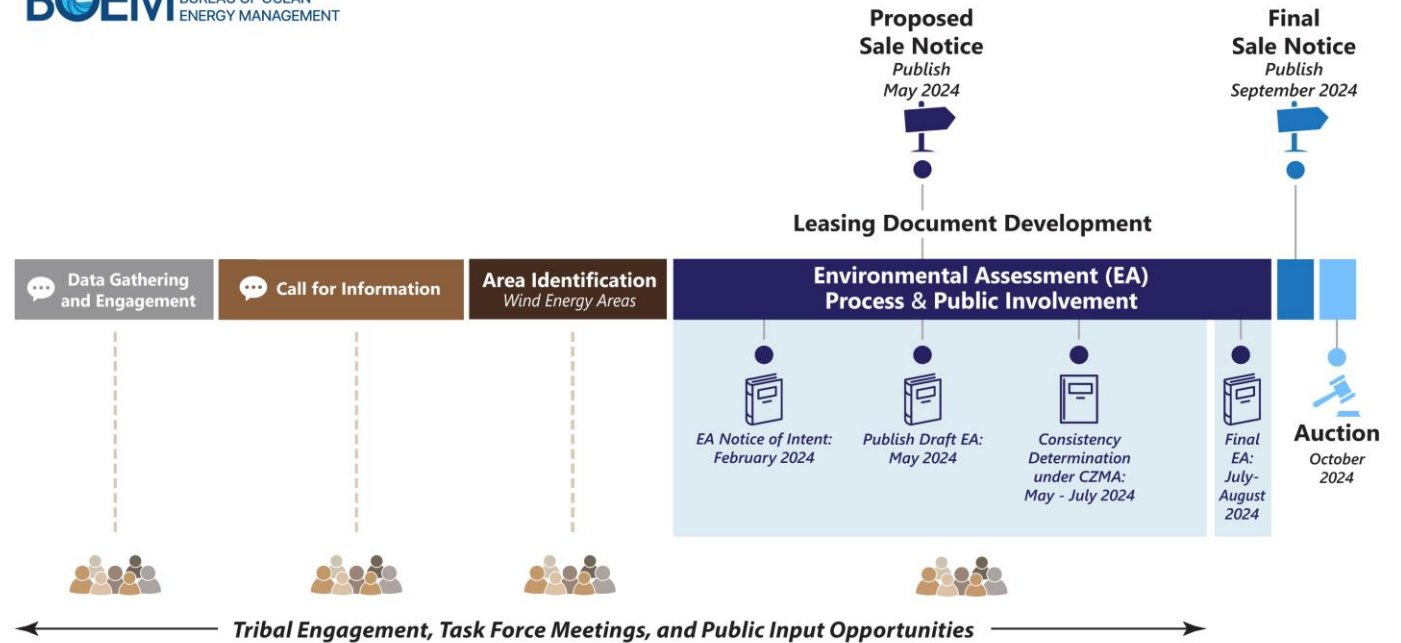
Publish Final Sale Notice

- September 2024

Lease Auction

- October 2024

PROJECTED OREGON RENEWABLE ENERGY LEASING SCHEDULE

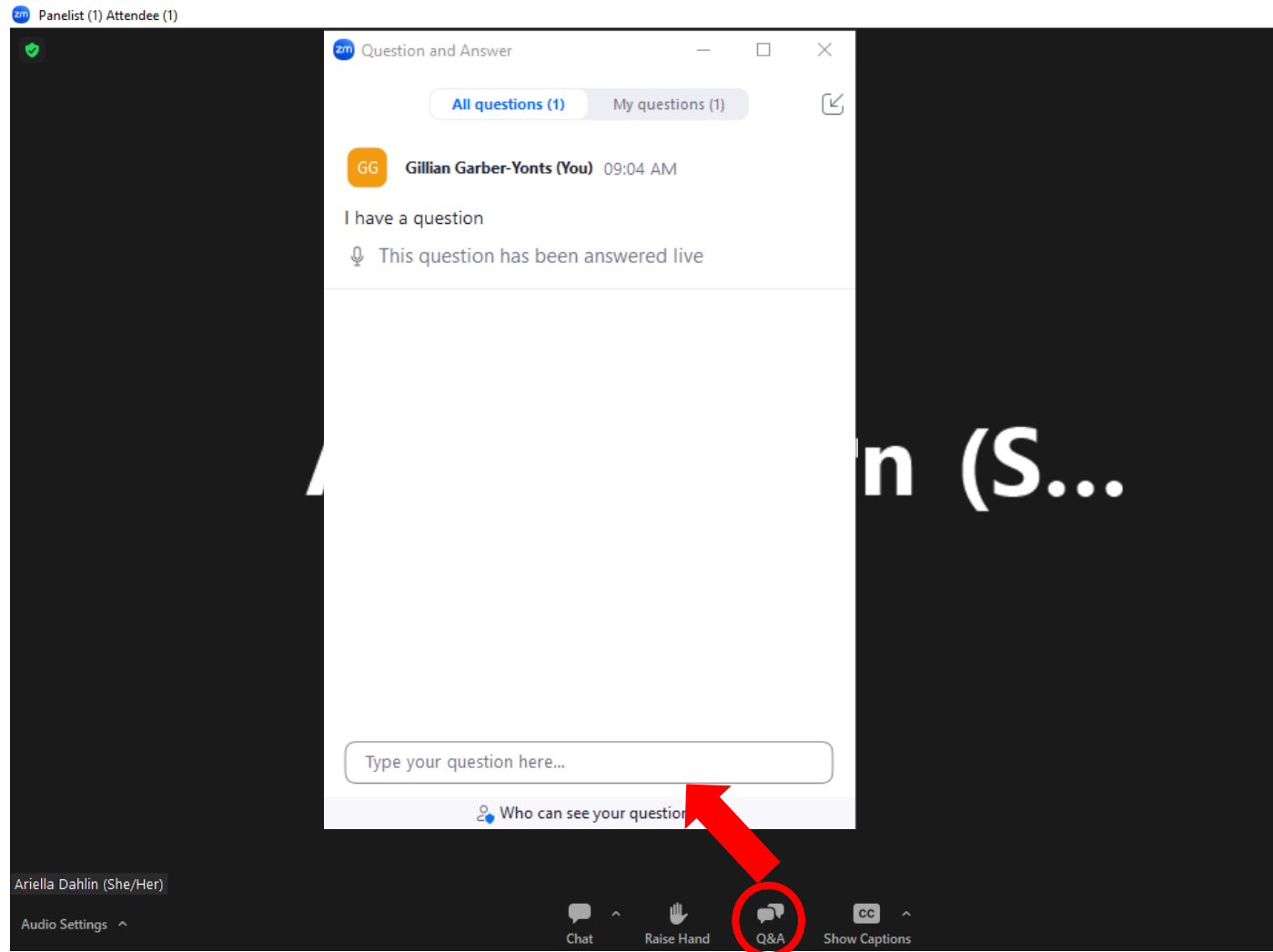


• BOEM coordinates and consults with affected Tribal, State, and local governments and other Federal agencies throughout the process.
 • Note that this is a projected leasing schedule contingent upon the process moving forward to the auction stage.

Q&A on the PSN

Clarifying Questions on the PSN

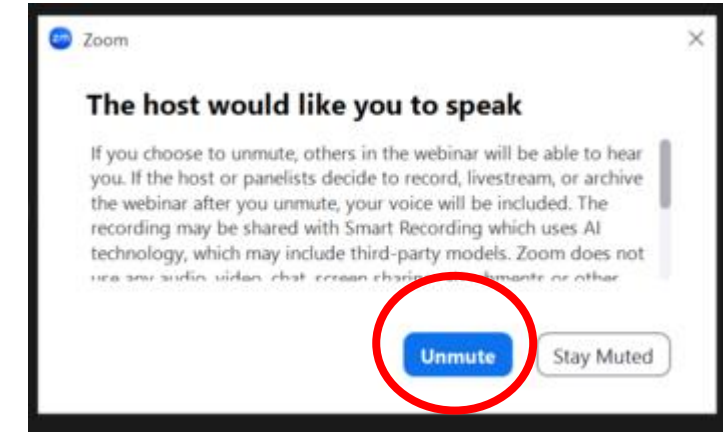
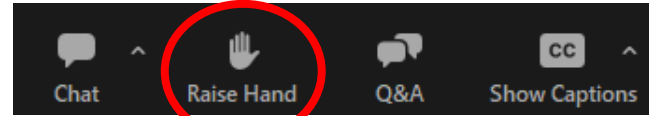
- We will look at the questions received in the Q&A pod and answer questions verbally.
- Note that any questions during this clarifying Q&A are not official public record.
- Q&A is focused on the PSN.
- For technical difficulties, please email cbaker@kearnswest.com



5 Minute Break

Verbal Public Comment Opportunity for the PSN

- Raise your hand to join the queue.
- The facilitator will call on you when it is your turn to speak.
- You will then be unmuted.
 - If you are a phone call-in user, dial *9 on your phone to raise hand.
 - If unable to speak, email cbaker@kearnswest.com for technical assistance.
 - Public comment will not be accepted through the Q&A pod.
- Provide your full name and affiliation before you speak for the court reporter.
- When providing comments, please:
 - Respect time limits as assigned.
 - Use respectful language.



To provide written comment, visit [regulations.gov](https://www.regulations.gov), docket number BOEM-2024-0022. BOEM will accept comments through 8:59 pm PT on July 1, 2024.

Next Steps & Closing Remarks

Doug Boren, Pacific Regional Director



Upcoming Public Input Opportunities

Upcoming public meetings:

- May 30, 2024: PSN Public webinar
 - Virtual meeting, 5 – 8 p.m.
- June 5, 2024: EA Public webinar
 - Virtual meeting, 4 p.m.
- Agenda and registration information available at:
www.boem.gov/oregon



BOEM documents open for public comment:

- May 1 – June 14, 2024: Draft Environmental Assessment (44-day comment period)
 - Link: www.regulations.gov, enter docket ID: BOEM-2023-0065
- May 1 – July 1, 2024: Proposed Sale Notice (60-day public comment period)
 - Link: www.regulations.gov, enter docket ID: BOEM-2024-0022



BOEM.gov



Jean Thurston-Keller | jean.thurston-keller@boem.gov | 805-384-6303

The meeting has adjourned: How to Comment



Public Comment Period Open Until July 1, 2024 **8:59 PM Pacific** / 11:59 PM Eastern

For more information visit www.boem.gov/oregon



Online at www.regulations.gov: Search for Docket No. BOEM-2024-0022. Click on the “Comment” button. Enter your information and comment, then click “Submit Comment.”



In writing to:

Enclose comment in an envelope labeled “Comments on Oregon Wind Lease Sale PSN” and send to: Jean Thurston-Keller, Bureau of Ocean Energy Management, Office of Strategic Resources, 760 Paseo Camarillo, Suite 102 (CM102), Camarillo, California 93010.

Comments submitted through traditional mail will be entered into the official docket on Regulations.gov