

Maryland Offshore Wind Project

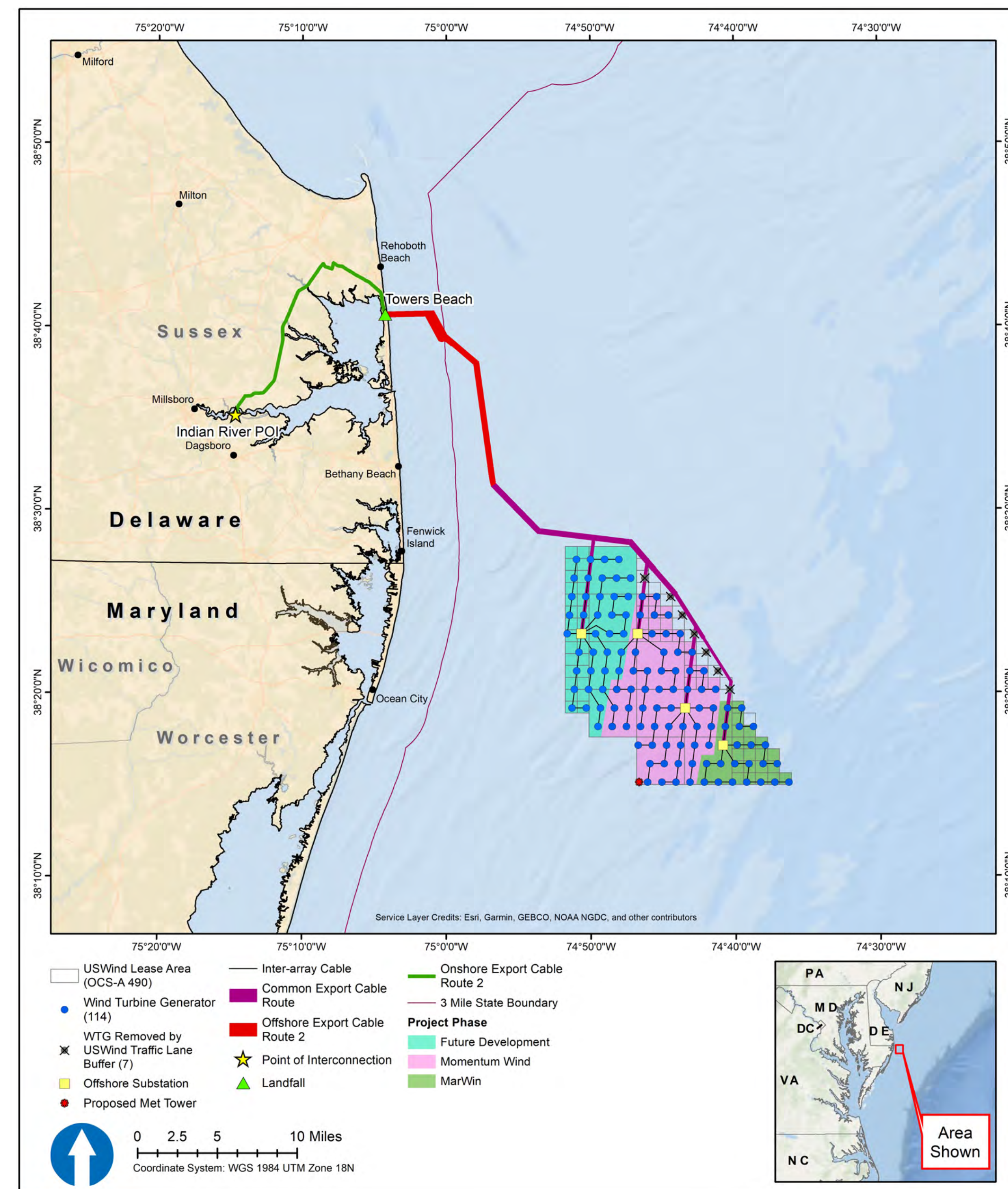
Alternative C - Landfall and Onshore Export Cable Routes Alternative

Under **Alternative C**, the Landfall Alternative, the construction, O&M, and eventual decommissioning of an up to 2.2 GW wind energy facility offshore Maryland would occur within the range of the design parameters outlined in the project COP, subject to applicable mitigation measures. This alternative would result in onshore export cable routing that avoids crossing Indian River Bay and the Indian River (i.e., Inshore Export Cable Route). Each of the below sub alternatives may be individually selected, subject to meeting the purpose and need.

Alternative C-1 includes the Towers Beach landfall (i.e., exclusion of the 3R's Beach landfall), and a terrestrial-based Onshore Export Cable Route from the Towers Beach landfall to the Indian River substation (POI) (i.e., Onshore Export Cable Route 2). This would be contingent on selection of Offshore Cable Route 2 (northern route).

Alternative C-2 includes the 3R's Beach landfall (i.e., exclusion of the Towers Beach landfall), and terrestrial-based Onshore Export Cable Routes from the 3R's Beach landfall to the Indian River substation would be considered (i.e., Onshore Export Cable Routes 1a, 1b, and 1c). This would be contingent on selection of Offshore Cable Route 1 (southern route).

Alternative C-1 – Towers Beach Landfall Alternative



Alternative C-2 – 3R's Beach Landfall Alternative

