

Vineyard Mid-Atlantic

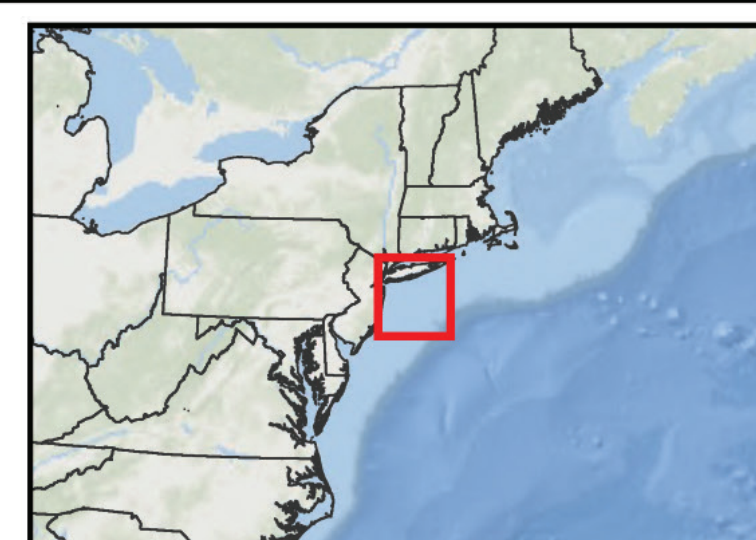
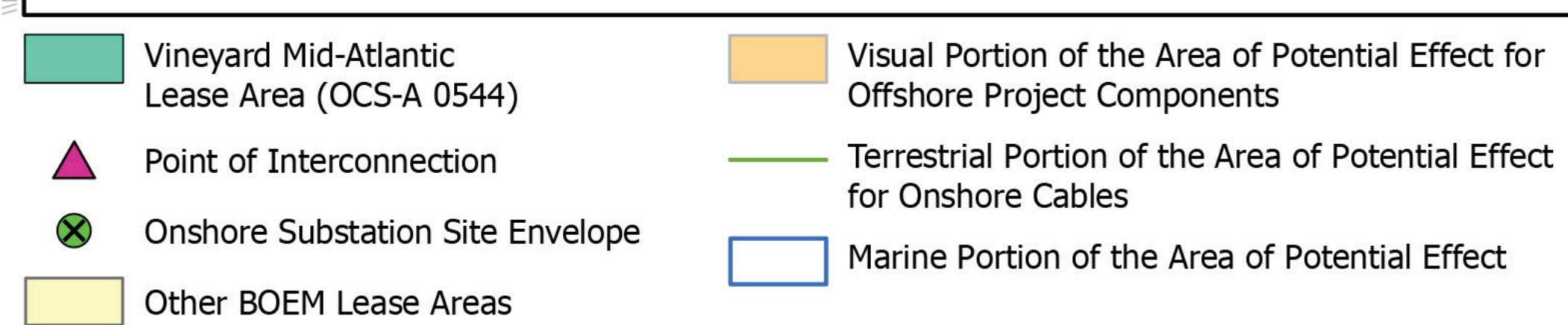
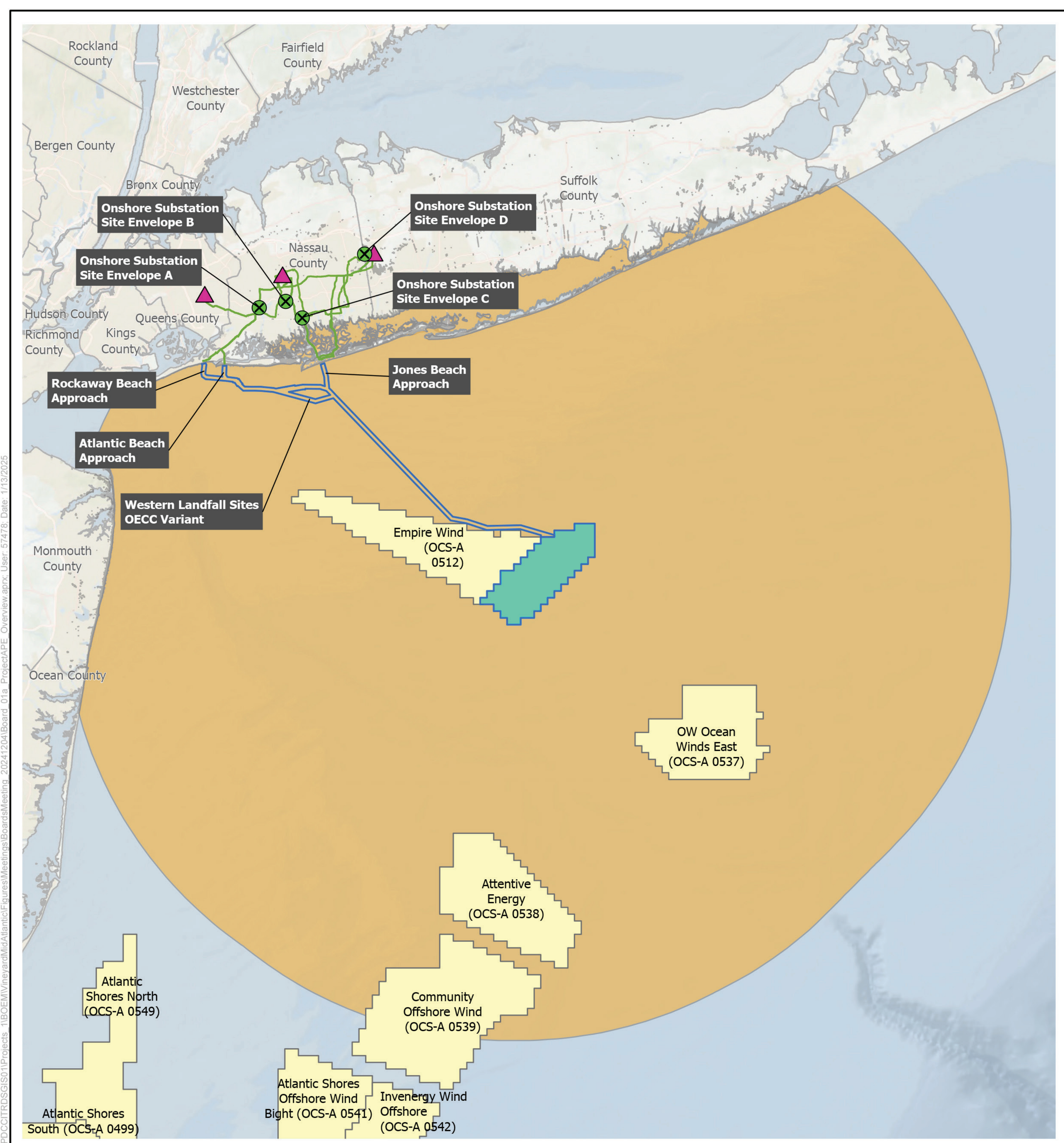
What is the Area of Potential Effects (APE) for the Vineyard Mid-Atlantic Project?

BOEM needs your input: do you know of historic properties (Buildings, Structures, Objects, Archaeological Sites, Districts, Landscapes, Traditional Cultural Properties) that may be affected by this project? This project has three categories of APE:

Terrestrial: The depth and breadth of terrestrial areas potentially impacted by any ground disturbing activities

Marine: The depth and breadth of seabed potentially impacted by any bottom-disturbing activities

Visual: The viewshed from which renewable energy structures, whether located offshore or onshore, would be visible



Source: Vineyard 2024.