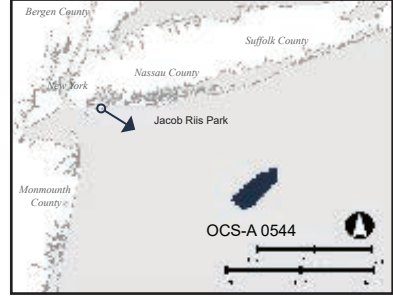




# Photographic Simulations

## Photo Location Map



## Photo Data

Date/Time:	23-May-2023 / 17:20
Light Conditions:	Front Light
Camera:	Canon 6D Mark II
Focal Length:	50mm (full frame)

## Photo Location

Latitude:	44° 33' 57.79" N
Longitude:	73° 52' 08.87" W
Elevation (+/-):	4.9 m (16 ft)
Nearest Turbine:	69.3 km (43.0 mi)
Farthest Turbine:	82.7 km (51.4 mi)
Horiz. Field-of-View:	16°
Vertical Field-of-View:	0.12°

## Meteorological Data

Temperature:	60°F
Humidity:	58%
Visibility:	>10 mi
Weather Condition:	Fair

## Visual Setting

SCA/LCA:	Oceanside Recreation
Resource Type:	National Recreation Area Municipal Park/Ocean Beach
Use Type:	Active Recreation Passive Recreation/Relaxation
Viewer Types:	Recreation oriented visitors

Figure E-1a  
KOP 01: Jacob Riis Park - Gateway National Recreation Area  
Borough of Queens, New York City, NY

EXISTING VIEW

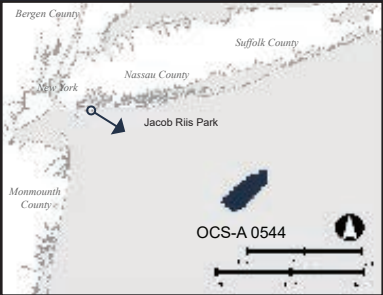
The above photograph is intended to be viewed 20 inches from the reader's eye when printed on 11"x17" paper and 13 inches from the reader's eye when printed on 8 1/2" x 11" paper. Viewing on an uncalibrated video monitor can alter intended lightness, color and/or contrast of the image.





# Photographic Simulations

## Photo Location Map



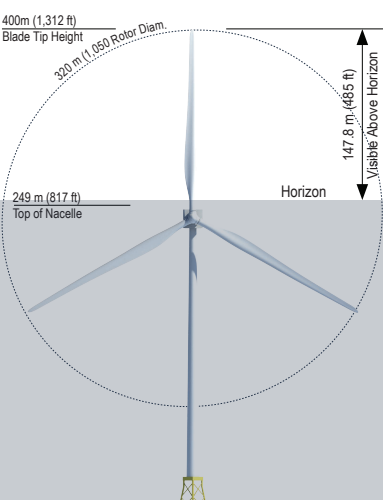
## Photo Data

Date/Time:	23-May-2023 / 17:20
Light Conditions:	Front Light
Camera:	Canon 6D Mark II
Focal Length:	50mm (full frame)

## Photo Location

Latitude:	44° 33' 57.79" N
Longitude:	73° 52' 08.87" W
Elevation (+/-):	4.9 m (16 ft)
Nearest Turbine:	69.3 km (43.0 mi)
Farthest Turbine:	82.7 km (51.4 mi)
Horiz. Field-of-View:	16°
Vertical Field-of-View:	0.12°

## Visible Portion of Closest WTG



Visible portion of the closest WTG is based on a coefficient of refraction of 0.13

Figure E-1b  
KOP 01: Jacob Riis Park - Gateway National Recreation Area  
Borough of Queens, New York City, NY

**SIMULATED VIEW**

The above photograph is intended to be viewed 20 inches from the reader's eye when printed on 11"x17" paper and 13 inches from the reader's eye when printed on 8 1/2" x 11" paper. Viewing on an uncalibrated video monitor can alter intended lightness, color and/or contrast of the image.



# Photographic Simulations

## Photo Location Map



## Photo Data

Date/Time:	03-Nov-2022 / 12:40
Light Conditions:	Side Light
Camera:	Canon 6D Mark II
Focal Length:	50mm (full frame)

## Photo Location

Latitude:	40° 34' 58.36" N
Longitude:	73° 38' 58.54" W
Elevation (+/-):	6.4 m (21 ft)
Nearest Turbine:	56.3 km (35 mi)
Farthest Turbine:	67.0 km (41.6 mi)
Horiz. Field-of-View:	21°
Vertical Field-of-View:	0.26°

## Meteorological Data

Temperature:	65°F
Humidity:	56%
Visibility:	>10 mi
Weather Condition:	Fair

## Visual Setting

SCA/LCA:	Oceanside Urban
Resource Type:	Public Boardwalk Ocean Beach
Use Type:	Passive Recreation/Relaxation
Viewer Types:	Local residents/workers Recreation oriented visitors



Figure E-2a  
KOP 02: Ocean Beach Park/Long Beach Boardwalk  
City of Long Beach, Nassau County, NY

EXISTING VIEW

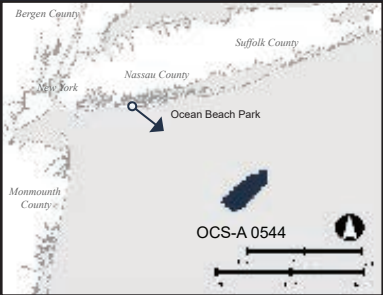
The above photograph is intended to be viewed 20 inches from the reader's eye when printed on 11"x17" paper and 13 inches from the reader's eye when printed on 8 1/2" x 11" paper. Viewing on an uncalibrated video monitor can alter intended lightness, color and/or contrast of the image.





# Photographic Simulations

## Photo Location Map



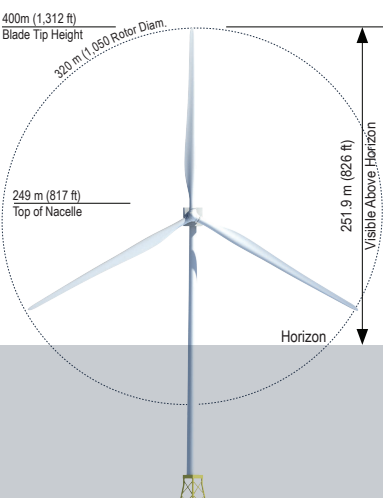
## Photo Data

Date/Time:	03-Nov-2022 / 12:40
Light Conditions:	Side Light
Camera:	Canon 6D Mark II
Focal Length:	50mm (full frame)

## Photo Location

Latitude:	40° 34' 58.36" N
Longitude:	73° 38' 58.54" W
Elevation (+/-):	6.4 m (21 ft)
Nearest Turbine:	56.3 km (35 mi)
Farthest Turbine:	67.0 km (41.6 mi)
Horiz. Field-of-View:	21°
Vertical Field-of-View:	0.26°

## Visible Portion of Closest WTG



Visible portion of the closest WTG is based on a coefficient of refraction of 0.13

Figure E-2b  
KOP 02: Ocean Beach Park/Long Beach Boardwalk  
City of Long Beach, Nassau County, NY

**SIMULATED VIEW**

The above photograph is intended to be viewed 20 inches from the reader's eye when printed on 11"x17" paper and 13 inches from the reader's eye when printed on 8 1/2" x 11" paper. Viewing on an uncalibrated video monitor can alter intended lightness, color and/or contrast of the image.

**VINEYARD  
MID-ATLANTIC**

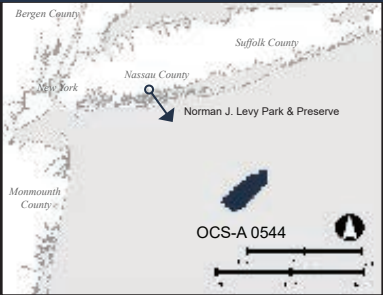
VINEYARD OFFSHORE





# Photographic Simulations

## Photo Location Map



## Photo Data

Date/Time:	24-May-2023 / 15:55
Light Conditions:	Side Light
Camera:	Canon 6D Mark II
Focal Length:	50mm (full frame)

## Photo Location

Latitude:	40° 38' 47.12" N
Longitude:	73° 33' 46.22" W
Elevation (+/-):	35.7 m (117 ft)
Nearest Turbine:	56.2 km (35.1 mi)
Farthest Turbine:	65.0 km (40.4 mi)
Horiz. Field-of-View:	22°
Vertical Field-of-View	0.33°

## Meteorological Data

Temperature:	66°F
Humidity:	43%
Visibility:	>10 mi
Weather Condition:	Fair

## Visual Setting

SCA/LCA:	Bayside Natural Upland
Resource Type:	County Park, Scenic Overlook Conservation Area
Use Type:	Passive Recreation/Relaxation Scenic enjoyment
Viewer Types:	Recreation oriented visitors Scenery oriented visitors

Figure E-3a  
KOP 04: Norman J. Levy Park & Preserve  
Town of Hempstead, Nassau County, NY

EXISTING VIEW

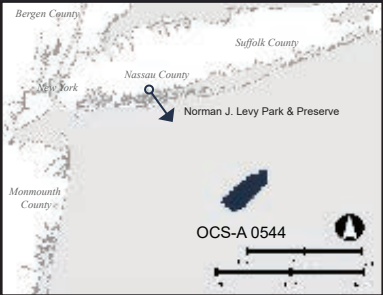
The above photograph is intended to be viewed 20 inches from the reader's eye when printed on 11"x17" paper and 13 inches from the reader's eye when printed on 8 1/2" x 11" paper. Viewing on an uncalibrated video monitor can alter intended lightness, color and/or contrast of the image.





# Photographic Simulations

## Photo Location Map



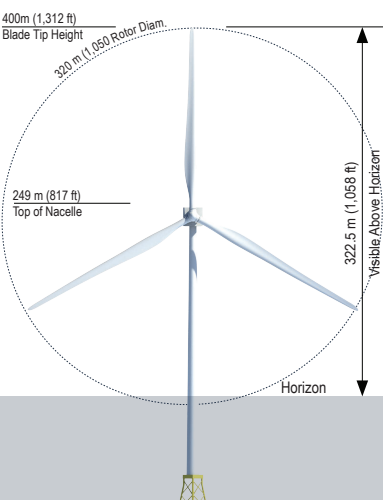
## Photo Data

Date/Time:	24-May-2023 / 15:55
Light Conditions:	Side Light
Camera:	Canon 6D Mark II
Focal Length:	50mm (full frame)

## Photo Location

Latitude:	40° 38' 47.12" N
Longitude:	73° 33' 46.22" W
Elevation (+/-):	35.7 m (117 ft)
Nearest Turbine:	56.2 km (35.1 mi)
Farthest Turbine:	65.0 km (40.4 mi)
Horiz. Field-of-View:	22°
Vertical Field-of-View:	0.33°

## Visible Portion of Closest WTG



Visible portion of the closest WTG is based on a coefficient of refraction of 0.13

Figure E-3b  
KOP 04: Norman J. Levy Park & Preserve  
Town of Hempstead, Nassau County, NY

**SIMULATED VIEW**

The above photograph is intended to be viewed 20 inches from the reader's eye when printed on 11"x17" paper and 13 inches from the reader's eye when printed on 8 1/2" x 11" paper. Viewing on an uncalibrated video monitor can alter intended lightness, color and/or contrast of the image.

**VINEYARD  
MID-ATLANTIC**

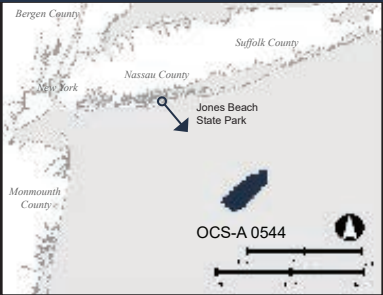
VINEYARD OFFSHORE





# Photographic Simulations

## Photo Location Map



## Photo Data

Date/Time:	23-May-2023 / 18:50
Light Conditions:	Back Light
Camera:	Canon 6D Mark II
Focal Length:	50mm (full frame)

## Photo Location

Latitude:	40° 35' 45.52" N
Longitude:	73° 29' 43.01" W
Elevation (+/-):	5.2 m (17 ft)
Nearest Turbine:	48.8 km (30.3 mi)
Farthest Turbine:	57.5 km (35.7 mi)
Horiz. Field-of-View:	25°
Vertical Field-of-View	0.34°

## Meteorological Data

Temperature:	59°F
Humidity:	48%
Visibility:	>10 mi
Weather Condition:	Fair

## Visual Setting

SCA/LCA:	Oceanside Recreation
Resource Type:	State Park Ocean Beach
Use Type:	Active Recreation Passive Recreation/Relaxation
Viewer Types:	Recreation oriented visitors Scenery oriented visitors

Figure E-4a

KOP 05: Jones Beach State Park (Field 6)  
Town of Hempstead, Nassau County, NY

EXISTING VIEW

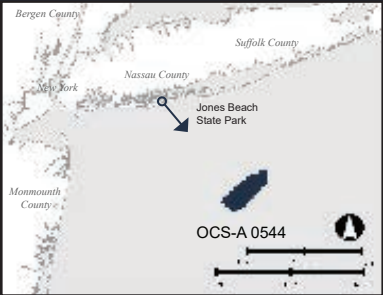
The above photograph is intended to be viewed 20 inches from the reader's eye when printed on 11"x17" paper and 13 inches from the reader's eye when printed on 8 1/2" x 11" paper. Viewing on an uncalibrated video monitor can alter intended lightness, color and/or contrast of the image.





# Photographic Simulations

## Photo Location Map



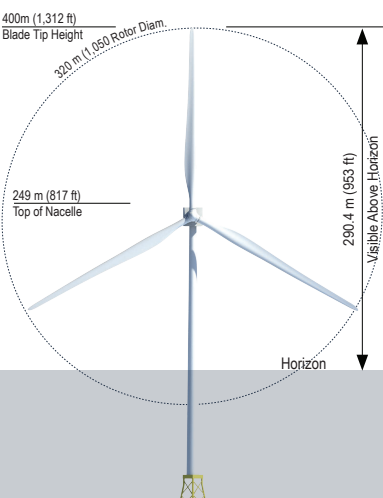
## Photo Data

Date/Time:	23-May-2023 / 18:50
Light Conditions:	Back Light
Camera:	Canon 6D Mark II
Focal Length:	50mm (full frame)

## Photo Location

Latitude:	40° 35' 45.52" N
Longitude:	73° 29' 43.01" W
Elevation (+/-):	5.2 m (17 ft)
Nearest Turbine:	48.8 km (30.3 mi)
Farthest Turbine:	57.5 km (35.7 mi)
Horiz. Field-of-View:	25°
Vertical Field-of-View:	0.34°

## Visible Portion of Closest WTG



Visible portion of the closest WTG is based on a coefficient of refraction of 0.13

Figure E-4b  
KOP 05: Jones Beach State Park (Field 6)  
Town of Hempstead, Nassau County, NY

**SIMULATED VIEW**

The above photograph is intended to be viewed 20 inches from the reader's eye when printed on 11"x17" paper and 13 inches from the reader's eye when printed on 8 1/2" x 11" paper. Viewing on an uncalibrated video monitor can alter intended lightness, color and/or contrast of the image.

**VINEYARD  
MID-ATLANTIC**

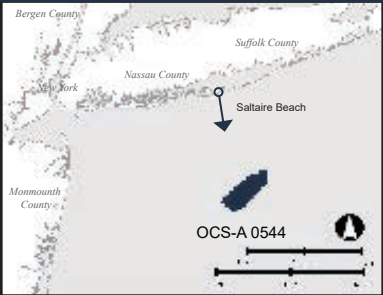
VINEYARD OFFSHORE





# Photographic Simulations

## Photo Location Map



## Photo Data

Date/Time:	24-May-2023 / 9:15
Light Conditions:	Side Light
Camera:	Canon 6D Mark II
Focal Length:	50mm (full frame)

## Photo Location

Latitude:	40° 37' 58.88" N
Longitude:	73° 12' 12.65" W
Elevation (+/-):	4.0 m (13 ft)
Nearest Turbine:	38.8 km (24.1 mi)
Farthest Turbine:	52.2 km (32.4 mi)
Horiz. Field-of-View:	30°
Vertical Field-of-View	0.49°

## Meteorological Data

Temperature:	56°F
Humidity:	53%
Visibility:	>10 mi
Weather Condition:	Fair

## Visual Setting

SCA/LCA:	Oceanside Residential/Commercial
Resource Type:	National Seashore Ocean Beach
Use Type:	Active Recreation Passive Recreation/Relaxation
Viewer Types:	Seasonal Residents/Vacationers Recreation oriented visitors

Figure E-5a

KOP 08: Saltaire Beach  
Fire Island, Town of Islip, Suffolk County, NY

EXISTING VIEW

The above photograph is intended to be viewed 20 inches from the reader's eye when printed on 11"x17" paper and 13 inches from the reader's eye when printed on 8 1/2" x 11" paper. Viewing on an uncalibrated video monitor can alter intended lightness, color and/or contrast of the image.

VINEYARD  
MID-ATLANTIC

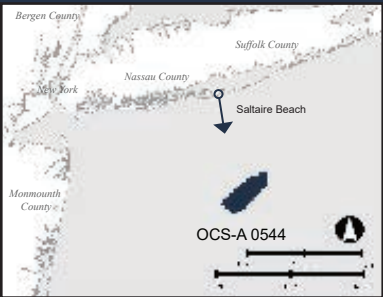
VINEYARD OFFSHORE





# Photographic Simulations

## Photo Location Map



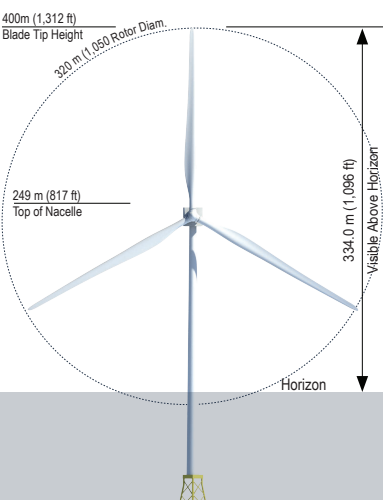
## Photo Data

Date/Time:	24-May-2023 / 9:15
Light Conditions:	Side Light
Camera:	Canon 6D Mark II
Focal Length:	50mm (full frame)

## Photo Location

Latitude:	40° 37' 58.88" N
Longitude:	73° 12' 12.65" W
Elevation (+/-):	4.0 m (13 ft)
Nearest Turbine:	38.8 km (24.1 mi)
Farthest Turbine:	52.2 km (32.4 mi)
Horiz. Field-of-View:	30°
Vertical Field-of-View:	0.49°

## Visible Portion of Closest WTG



Visible portion of the closest WTG is based on a coefficient of refraction of 0.13

Figure E-5b  
KOP 08: Saltaire Beach  
Fire Island, Town of Islip, Suffolk County, NY

**SIMULATED VIEW**

The above photograph is intended to be viewed 20 inches from the reader's eye when printed on 11"x17" paper and 13 inches from the reader's eye when printed on 8 1/2" x 11" paper. Viewing on an uncalibrated video monitor can alter intended lightness, color and/or contrast of the image.

**VINEYARD  
MID-ATLANTIC**

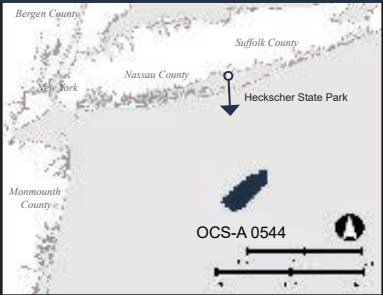
VINEYARD OFFSHORE





# Photographic Simulations

## Photo Location Map



## Photo Data

Date/Time:	24-May-2023 / 14:35
Light Conditions:	Side Light
Camera:	Canon 6D Mark II
Focal Length:	50mm (full frame)

## Photo Location

Latitude:	40° 41' 55.38" N
Longitude:	73° 09' 46.57" W
Elevation (+/-):	3.0 m (10 ft)
Nearest Turbine:	44.2 km (27.5 mi)
Farthest Turbine:	59.9 km (37.2 mi)
Horiz. Field-of-View:	24°
Vertical Field-of-View	0.39°

## Meteorological Data

Temperature:	68°F
Humidity:	43%
Visibility:	>10 mi
Weather Condition:	Fair

## Visual Setting

SCA/LCA:	Bayside Recreation
Resource Type:	State Park Bay Beach
Use Type:	Active Recreation Passive Recreation/Relaxation
Viewer Types:	Recreation oriented visitors Scenery oriented visitors

Figure E-6a  
KOP 09: Heckscher State Park  
Town of Islip, Suffolk County, NY

EXISTING VIEW

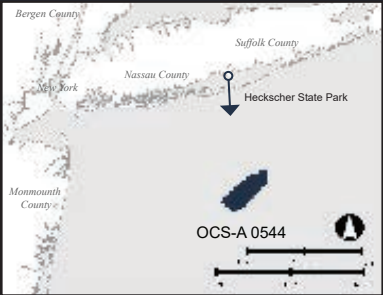
The above photograph is intended to be viewed 20 inches from the reader's eye when printed on 11"x17" paper and 13 inches from the reader's eye when printed on 8 1/2" x 11" paper. Viewing on an uncalibrated video monitor can alter intended lightness, color and/or contrast of the image.





# Photographic Simulations

## Photo Location Map



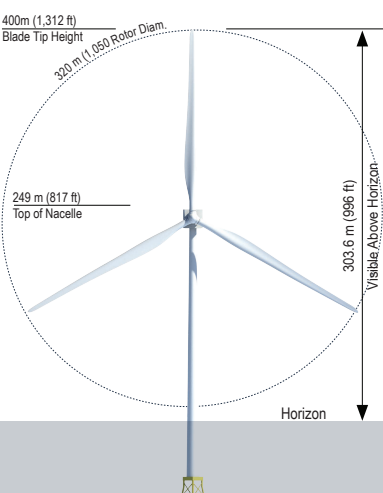
## Photo Data

Date/Time:	24-May-2023 / 14:35
Light Conditions:	Side Light
Camera:	Canon 6D Mark II
Focal Length:	50mm (full frame)

## Photo Location

Latitude:	40° 41' 55.38" N
Longitude:	73° 09' 46.57" W
Elevation (+/-):	3.0 m (10 ft)
Nearest Turbine:	44.2 km (27.5 mi)
Farthest Turbine:	59.9 km (37.2 mi)
Horiz. Field-of-View:	24°
Vertical Field-of-View:	0.39°

## Visible Portion of Closest WTG



Visible portion of the closest WTG is based on a coefficient of refraction of 0.13

Figure E-6b  
KOP 09: Heckscher State Park  
Town of Islip, Suffolk County, NY

**SIMULATED VIEW**

The above photograph is intended to be viewed 20 inches from the reader's eye when printed on 11"x17" paper and 13 inches from the reader's eye when printed on 8 1/2" x 11" paper. Viewing on an uncalibrated video monitor can alter intended lightness, color and/or contrast of the image.

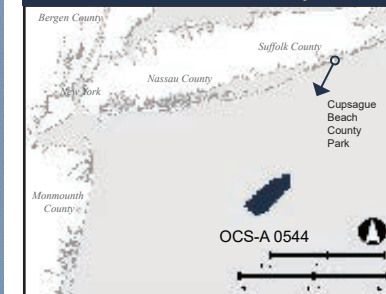
**VINEYARD  
MID-ATLANTIC**

VINEYARD OFFSHORE



# Photographic Simulations

## Photo Location Map



## Photo Data

Date/Time:	24-May-2023 / 12:00
Light Conditions:	Side Light
Camera:	Canon 6D Mark II
Focal Length:	50mm (full frame)

## Photo Location

Latitude:	40° 46' 16.24" N
Longitude:	72° 43' 50.16" W
Elevation (+/-):	7.3 m (24 ft)
Nearest Turbine:	54.7 km (34.0 mi)
Farthest Turbine:	76.0 km (47.3 mi)
Horiz. Field-of-View:	13°
Vertical Field-of-View:	0.28°

## Meteorological Data

Temperature:	67°F
Humidity:	45%
Visibility:	>10 mi
Weather Condition:	Fair

## Visual Setting

SCA/LCA:	Oceanside Beach
Resource Type:	Municipal Park Ocean Beach
Use Type:	Active Recreation Passive Recreation/Relaxation
Viewer Types:	Recreation oriented visitors Scenery oriented visitors



Figure E-7a  
KOP 12: Cupsogue Beach County Park  
Village of Westhampton Beach, Suffolk County, New York

EXISTING VIEW

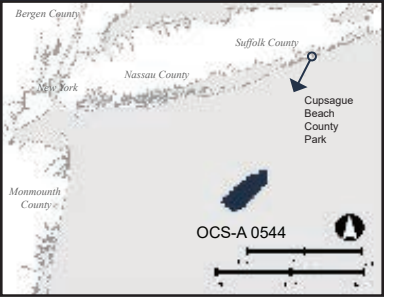
The above photograph is intended to be viewed 20 inches from the reader's eye when printed on 11"x17" paper and 13 inches from the reader's eye when printed on 8 1/2" x 11" paper. Viewing on an uncalibrated video monitor can alter intended lightness, color and/or contrast of the image.





# Photographic Simulations

## Photo Location Map



## Photo Data

Date/Time:	24-May-2023 / 12:00
Light Conditions:	Side Light
Camera:	Canon 6D Mark II
Focal Length:	50mm (full frame)

## Photo Location

Latitude:	40° 46' 16.24" N
Longitude:	72° 43' 50.16" W
Elevation (+/-):	7.3 m (24 ft)
Nearest Turbine:	54.7 km (34.0 mi)
Farthest Turbine:	76.0 km (47.3 mi)
Horiz. Field-of-View:	13°
Vertical Field-of-View:	0.28°

## Visible Portion of Closest WTG

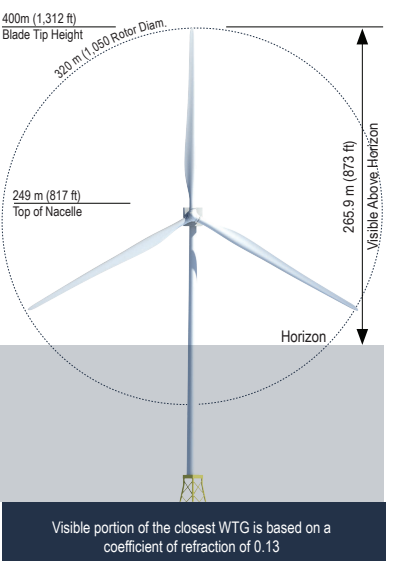


Figure E-7b  
 KOP 12: Cupsogue Beach County Park  
 Village of Westhampton Beach, Suffolk County, New York

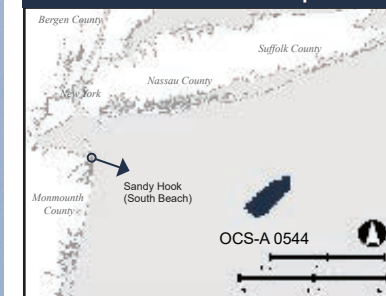
**SIMULATED VIEW**

The above photograph is intended to be viewed 20 inches from the reader's eye when printed on 11"x17" paper and 13 inches from the reader's eye when printed on 8 1/2" x 11" paper. Viewing on an uncalibrated video monitor can alter intended lightness, color and/or contrast of the image.



# Photographic Simulations

## Photo Location Map



## Photo Data

Date/Time:	24-May-2023 / 9:15
Light Conditions:	Side Light
Camera:	Canon 6D Mark II
Focal Length:	50mm (full frame)

## Photo Location

Latitude:	40° 24' 21.47" N
Longitude:	73° 58' 40.06" W
Elevation (+/-):	7.3 m (24 ft)
Nearest Turbine:	69.4 km (43.1mi)
Farthest Turbine:	86.5 km (53.8 mi)
Horiz. Field-of-View:	14°
Vertical Field-of-View	0.13°

## Meteorological Data

Temperature:	61°F
Humidity:	62%
Visibility:	>10 mi
Weather Condition:	Fair

## Visual Setting

SCA/LCA:	Oceanside Beach
Resource Type:	National Recreation Area Ocean Beach
Use Type:	Active/Passive Recreation Scenic/Cultural Tourism
Viewer Types:	Recreation oriented visitors Scenery/heritage oriented visitors



Figure E-8a  
KOP 15: Sandy Hook National Recreation Area (South Beach)  
Township of Middletown, Monmouth County, NJ

EXISTING VIEW

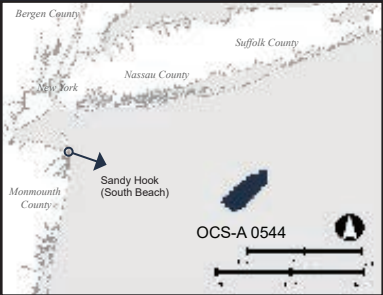
The above photograph is intended to be viewed 20 inches from the reader's eye when printed on 11"x17" paper and 13 inches from the reader's eye when printed on 8 1/2" x 11" paper. Viewing on an uncalibrated video monitor can alter intended lightness, color and/or contrast of the image.





# Photographic Simulations

## Photo Location Map



## Photo Data

Date/Time:	24-May-2023 / 9:15
Light Conditions:	Side Light
Camera:	Canon 6D Mark II
Focal Length:	50mm (full frame)

## Photo Location

Latitude:	40° 24' 21.47" N
Longitude:	73° 58' 40.06" W
Elevation (+/-):	7.3 m (24 ft)
Nearest Turbine:	69.4 km (43.1mi)
Farthest Turbine:	86.5 km (53.8 mi)
Horiz. Field-of-View:	14°
Vertical Field-of-View:	0.13°

## Visible Portion of Closest WTG

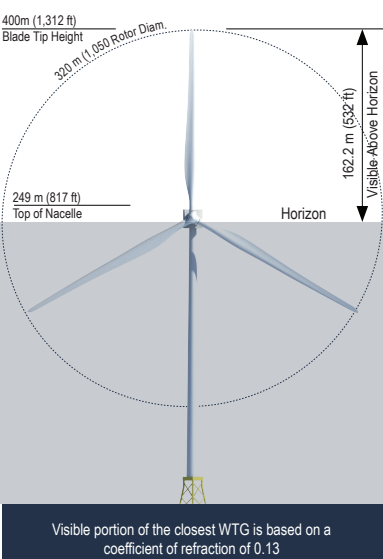


Figure E-8b  
KOP 15: Sandy Hook National Recreation Area (South Beach)  
Township of Middletown, Monmouth County, NJ

**SIMULATED VIEW**

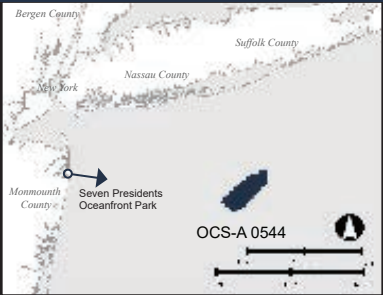
The above photograph is intended to be viewed 20 inches from the reader's eye when printed on 11"x17" paper and 13 inches from the reader's eye when printed on 8 1/2" x 11" paper. Viewing on an uncalibrated video monitor can alter intended lightness, color and/or contrast of the image.





# Photographic Simulations

## Photo Location Map



## Photo Data

Date/Time:	23-May-2023 / 13:40
Light Conditions:	Side Light
Camera:	Canon 6D Mark II
Focal Length:	50mm (full frame)

## Photo Location

Latitude:	40° 19' 00.74" N
Longitude:	73° 58' 35.31" W
Elevation (+/-):	5.2 m (17 ft)
Nearest Turbine:	66.7 km (41.5 mi)
Farthest Turbine:	85.2 km (53.0 mi)
Horiz. Field-of-View:	14°
Vertical Field-of-View:	0.15°

## Meteorological Data

Temperature:	62°F
Humidity:	60%
Visibility:	>10 mi
Weather Condition:	Fair

## Visual Setting

SCA/LCA:	Oceanside Recreation
Resource Type:	Municipal Park Ocean Beach
Use Type:	Active Recreation Passive Recreation/Relaxation
Viewer Types:	Recreation oriented visitors Local residents/workers

Figure E-9a  
KOP 17: Seven Presidents Oceanfront Park  
City of Long Branch, Monmouth County, NJ

EXISTING VIEW

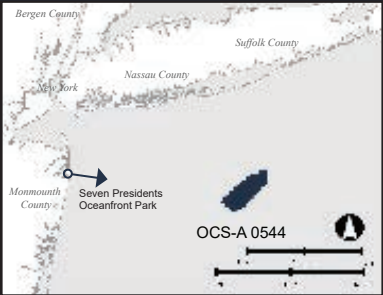
The above photograph is intended to be viewed 20 inches from the reader's eye when printed on 11"x17" paper and 13 inches from the reader's eye when printed on 8 1/2" x 11" paper. Viewing on an uncalibrated video monitor can alter intended lightness, color and/or contrast of the image.





# Photographic Simulations

## Photo Location Map



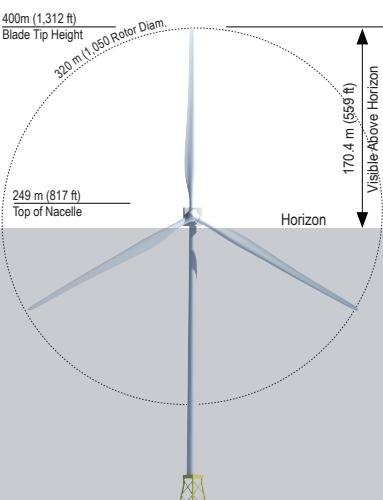
## Photo Data

Date/Time:	23-May-2023 / 13:40
Light Conditions:	Side Light
Camera:	Canon 6D Mark II
Focal Length:	50mm (full frame)

## Photo Location

Latitude:	40° 19' 00.74" N
Longitude:	73° 58' 35.31" W
Elevation (+/-):	5.2 m (17 ft)
Nearest Turbine:	66.7 km (41.5 mi)
Farthest Turbine:	85.2 km (53.0 mi)
Horiz. Field-of-View:	14°
Vertical Field-of-View:	0.15°

## Visible Portion of Closest WTG



Visible portion of the closest WTG is based on a coefficient of refraction of 0.13

Figure E-9b  
 KOP 17: Seven Presidents Oceanfront Park  
 City of Long Branch, Monmouth County, NJ

**SIMULATED VIEW**

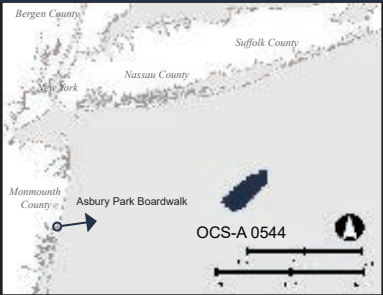
The above photograph is intended to be viewed 20 inches from the reader's eye when printed on 11"x17" paper and 13 inches from the reader's eye when printed on 8 1/2" x 11" paper. Viewing on an uncalibrated video monitor can alter intended lightness, color and/or contrast of the image.





# Photographic Simulations

## Photo Location Map



## Photo Data

Date/Time:	23-May-2023 / 12:50
Light Conditions:	Side Light
Camera:	Canon 6D Mark II
Focal Length:	50mm (full frame)

## Photo Location

Latitude:	40° 13' 08.51" N
Longitude:	74° 00' 00.52" W
Elevation (+/-):	5.8 m (19 ft)
Nearest Turbine:	67.6 km (42.0 mi)
Farthest Turbine:	88.0 km (54.7 mi)
Horiz. Field-of-View:	12°
Vertical Field-of-View:	0.14°

## Meteorological Data

Temperature:	64°F
Humidity:	56%
Visibility:	>10 mi
Weather Condition:	Fair

## Visual Setting

SCA/LCA:	Oceanside Urban
Resource Type:	Public Boardwalk/Arcade Ocean Beach
Use Type:	Family Entertainment Passive Recreation/Relaxation
Viewer Types:	Entertainment oriented visitors Vacationers

Figure E-10a  
KOP 18: Asbury Park Boardwalk  
City of Asbury Park, Monmouth County, NJ

EXISTING VIEW

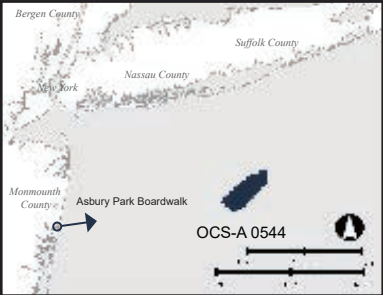
The above photograph is intended to be viewed 20 inches from the reader's eye when printed on 11"x17" paper and 13 inches from the reader's eye when printed on 8 1/2" x 11" paper. Viewing on an uncalibrated video monitor can alter intended lightness, color and/or contrast of the image.





# Photographic Simulations

## Photo Location Map



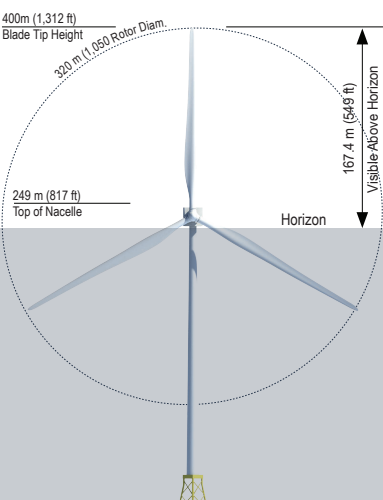
## Photo Data

Date/Time:	23-May-2023 / 12:50
Light Conditions:	Side Light
Camera:	Canon 6D Mark II
Focal Length:	50mm (full frame)

## Photo Location

Latitude:	40° 13' 08.51" N
Longitude:	74° 00' 00.52" W
Elevation (+/-):	5.8 m (19 ft)
Nearest Turbine:	67.6 km (42.0 mi)
Farthest Turbine:	88.0 km (54.7 mi)
Horiz. Field-of-View:	12°
Vertical Field-of-View:	0.14°

## Visible Portion of Closest WTG



Visible portion of the closest WTG is based on a coefficient of refraction of 0.13

Figure E-10b  
 KOP 18: Asbury Park Boardwalk  
 City of Asbury Park, Monmouth County, NJ

**SIMULATED VIEW**

The above photograph is intended to be viewed 20 inches from the reader's eye when printed on 11"x17" paper and 13 inches from the reader's eye when printed on 8 1/2" x 11" paper. Viewing on an uncalibrated video monitor can alter intended lightness, color and/or contrast of the image.