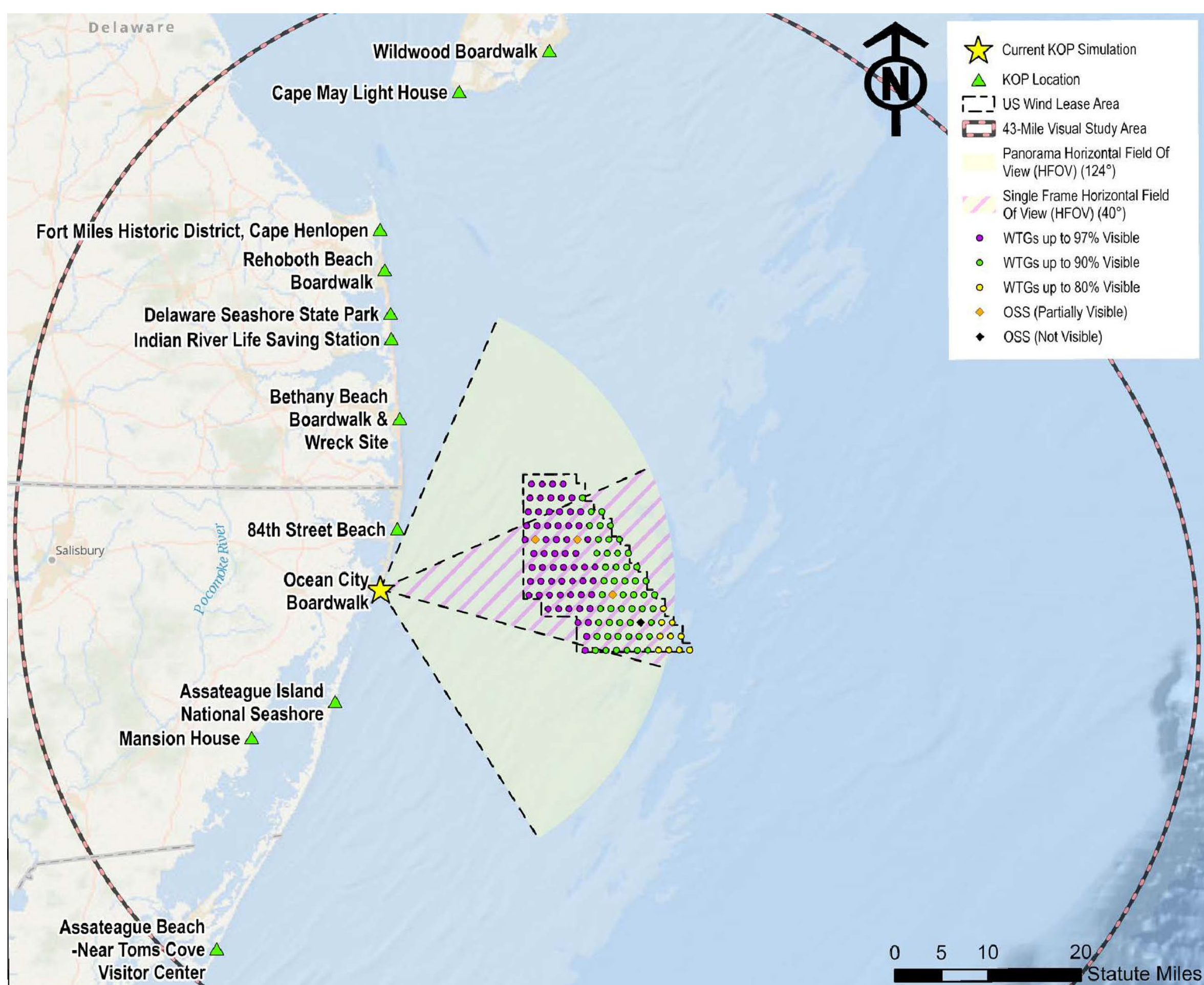


Visual Simulations of the Proposed Action from KOP 18: Ocean City Boardwalk, Fishing Pier, Ocean City, MD

Ocean City Boardwalk, Maryland Single Frame Simulation, Mid-Day (12:45 pm) and Late Afternoon (4:30 pm)
Distance to Nearest Wind Turbine: 12.5 Statute Miles

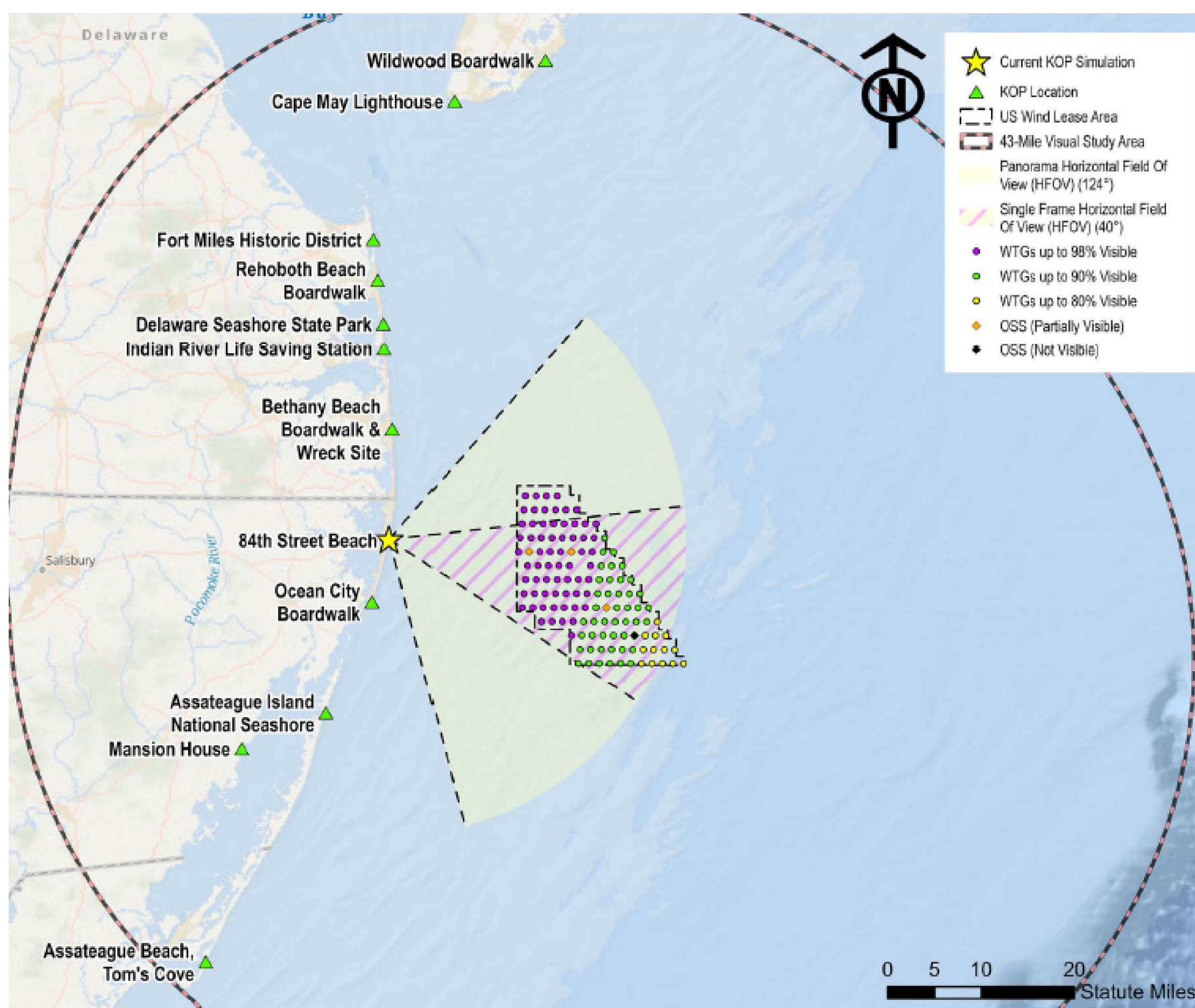


To view video simulations, please visit:
<https://www.boem.gov/renewable-energy/state-activities/maryland-offshore-wind> and select the "Visual Impact Assessment" tab.



Visual Simulations of the Proposed Action from KOP 6: 84th Street Beach, Ocean City, MD

84th St. Beach, Ocean City, Maryland Single Frame Simulation, Morning (6:22am) and Late Afternoon (5:00pm). Distance to Nearest Wind Turbine: 10.8 Statute Miles



To view video simulations, please visit:
<https://www.boem.gov/renewable-energy/state-activities/maryland-offshore-wind> and select the "Visual Impact Assessment" tab.

