

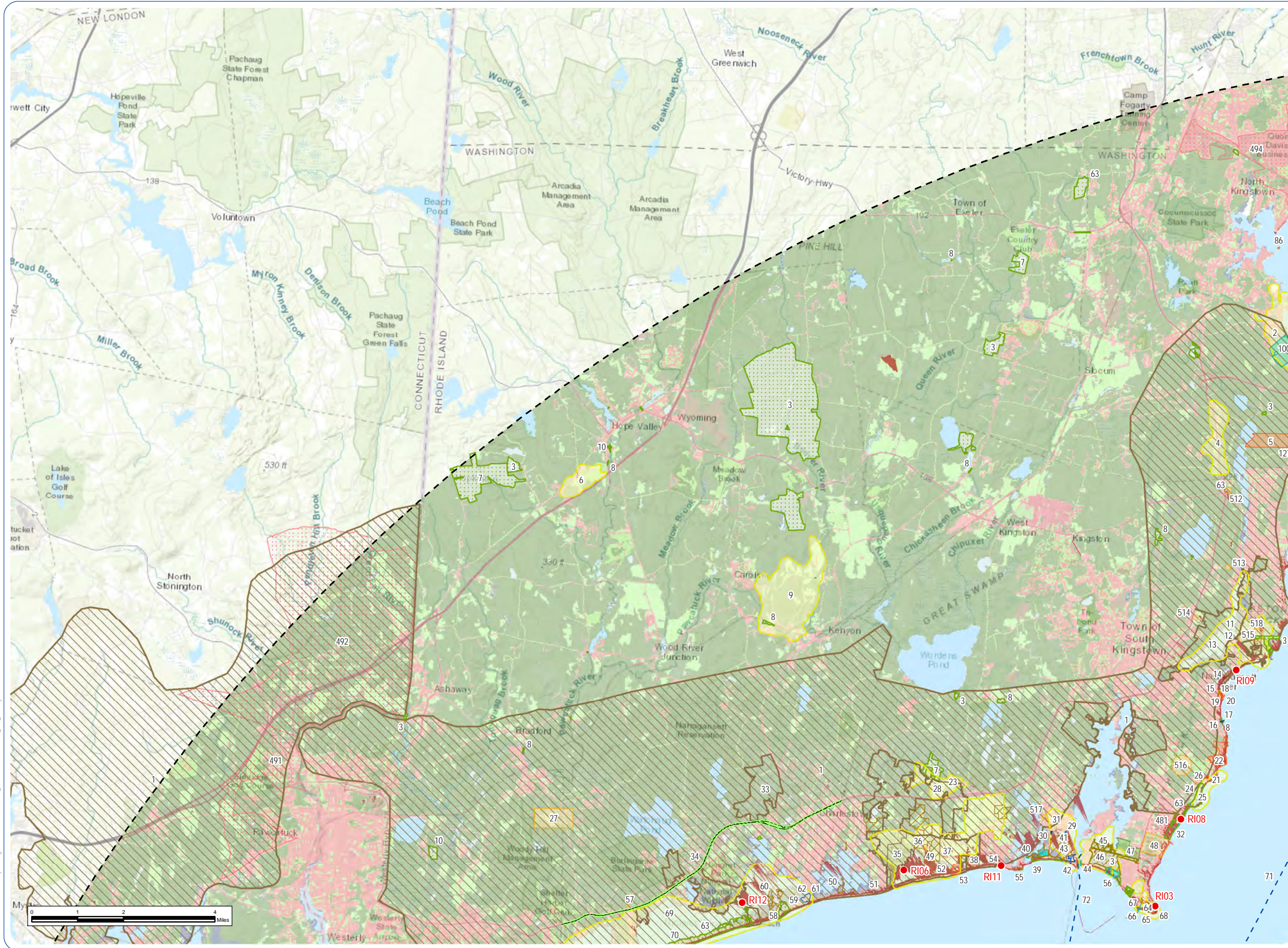
Sunrise Wind - Appendix I: Seascape, Landscape, and Visual Impacts Assessment

ATTACHMENT I-1

Scenic Resources Overview Map

(Source: EDR 2022, Sunrise Wind 2022)

Figure I-1.1 Land Cover and Visually Sensitive Resources within the PAPE Sheet 1

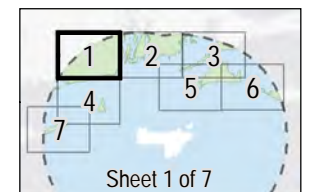


Sunrise Wind Farm Project

Outer Continental Shelf

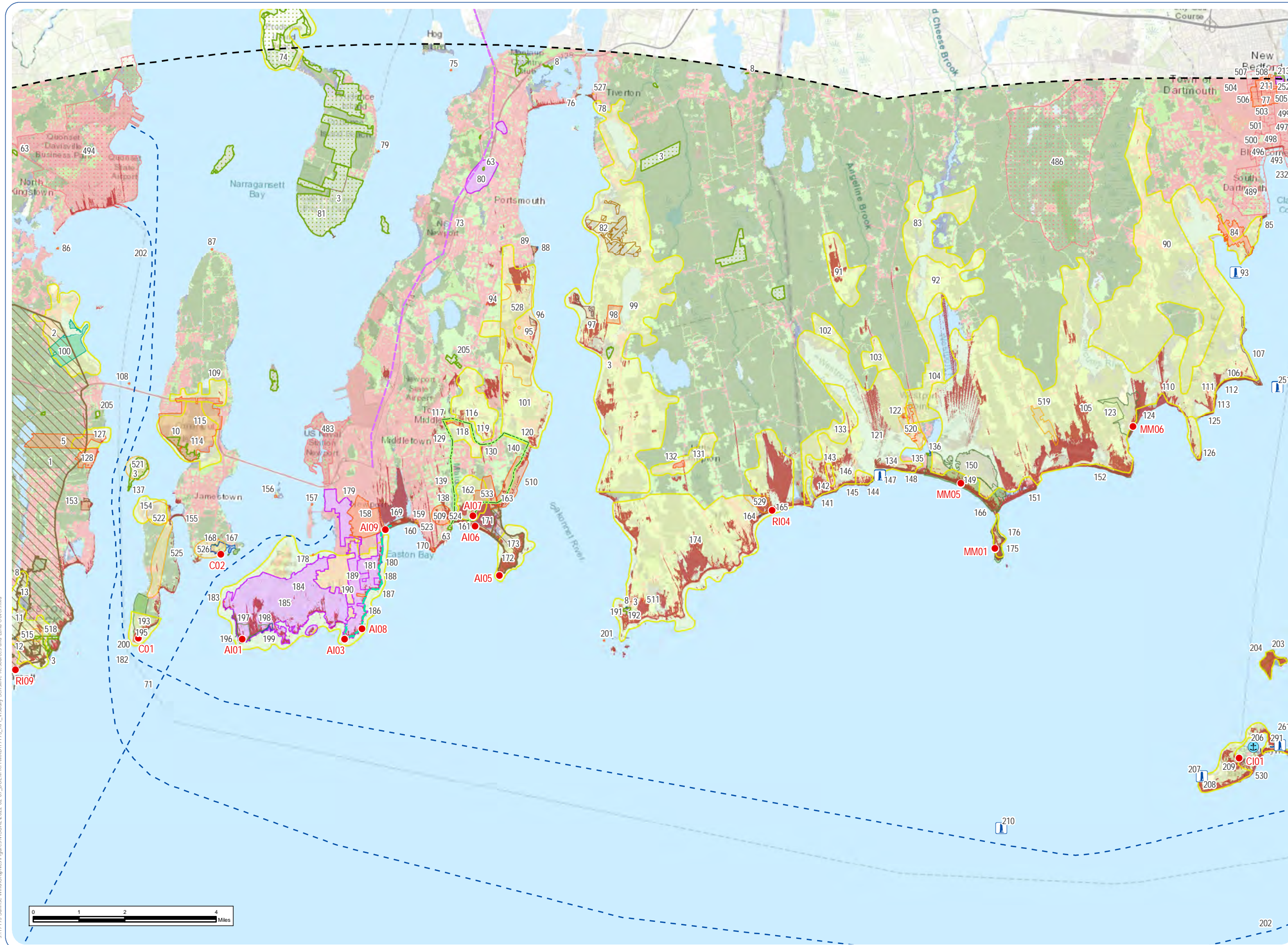
Land Cover and Visually Sensitive Resources within the PAPE

- Selected Key Observation Point
- - - Ferry Route
- State Scenic Byway
- NRHP-Listed Resource
- NRHP-Eligible Resource
- State Scenic Area
- ▨ National Wildlife Refuge
- ▨ State Wildlife Management Area
- State Park
- State Nature and Historic Preserve Area
- State Beach
- State Fishing and Boating Access
- State Beach
- ▨ Other State-Owned Environmental Land with Public Access
- ▨ Environmental Justice Area
- SRWF Zone of Visual Influence (ZVI)
- ▨ SRWF Visual Study Area
- Land Cover Classification
- Developed
- Agriculture/Open Developed
- Forest/Scrub
- Exposed Sand/Soil
- Emergent Herbaceous Wetland
- Open Water



Notes: 1. Basemap: ESRI ArcGIS Online "World Topographic Map" map service. 2. This map was generated in ArcMap on February 14, 2022.

Figure I-1.2 Land Cover and Visually Sensitive Resources within the PAPE Sheet 2

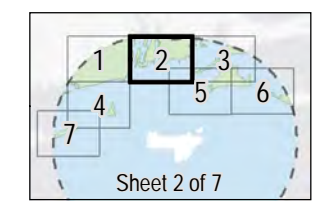


Sunrise Wind Farm Project

Outer Continental Shelf

Land Cover and Visually Sensitive Resources within the PAPE

- Selected Key Observation Point
- ⚓ Lighthouse (not NRHP-Listed)
- ⚓ Seaport
- - - Ferry Route
- State Scenic Byway
- National Historic Trail
- National Recreation Trail
- National Historic Landmark
- NRHP-Listed Resource
- NRHP-Eligible Resource
- State Scenic Area
- National Wildlife Refuge
- State Wildlife Management Area
- National Park
- State Park
- State Nature and Historic Preserve Area
- State Fishing and Boating Access
- State Beach
- Other State-Owned Environmental Land with Public Access
- Environmental Justice Area
- SRWF Zone of Visual Influence (ZVI)
- - - SRWF Visual Study Area
- Land Cover Classification
- Developed
- Agriculture/Open Developed
- Forest/Scrub
- Exposed Sand/Soil
- Emergent Herbaceous Wetland
- Open Water

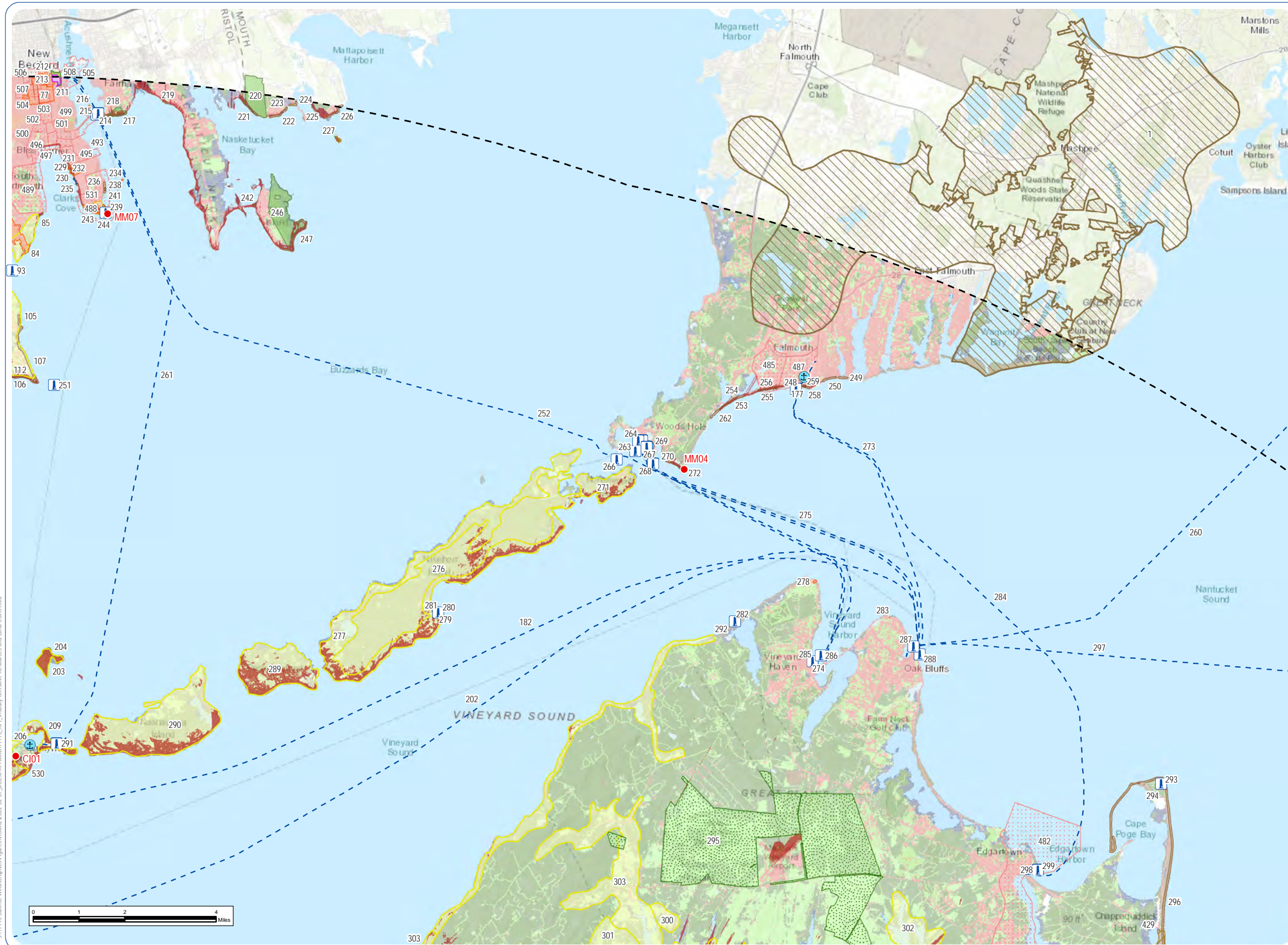


Notes: 1. Basemap: ESRI ArcGIS Online "World Topographic Map" map service. 2. This map was generated in ArcMap on February 14, 2022.

J:\19195 Sunrise Wind\Graphics\Figures\VISUAL\2022-02-09_BOEAM\RFI\WXD\19195_RFI_Visually Sensitive Resources and Land Cover.mxd



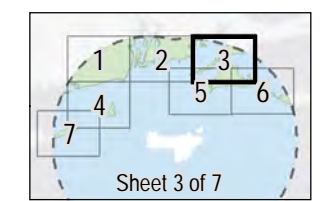
Figure I-1.3 Land Cover and Visually Sensitive Resources within the PAPE Sheet 3



Sunrise Wind Farm Project

Outer Continental Shelf
Land Cover and Visually Sensitive Resources within the PAPE

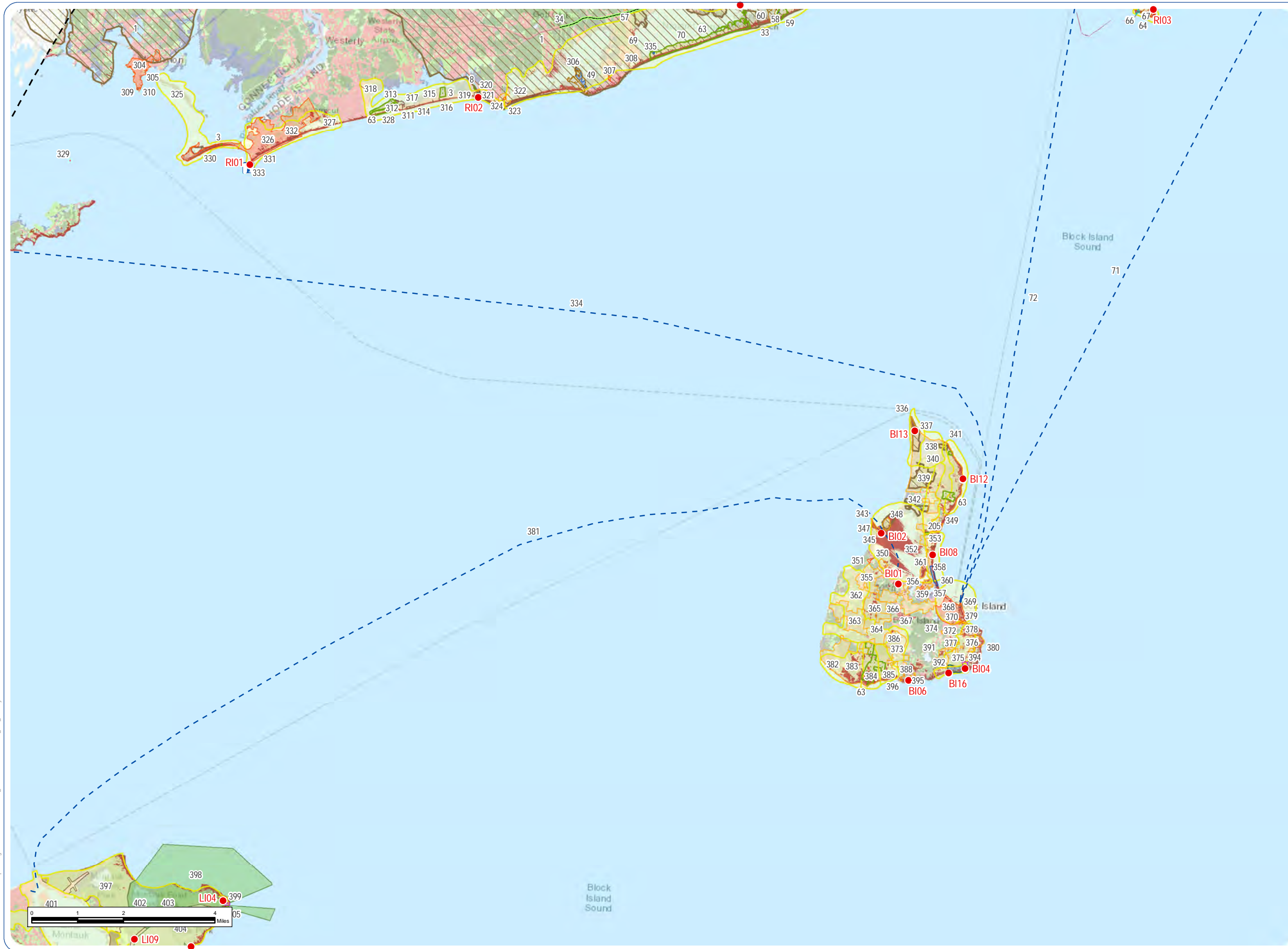
- Selected Key Observation Point
- ⚓ Lighthouse (not NRHP-Listed)
- ⚓ Seaport
- - - Ferry Route
- 🏛️ National Historic Landmark
- 🏠 NRHP-Listed Resource
- 🏠 NRHP-Eligible Resource
- 🌊 State Scenic Area
- 🦋 National Wildlife Refuge
- 🦋 State Wildlife Management Area
- 🌳 National Park
- 🌳 State Park
- 🌲 State Forest
- 🚤 State Fishing and Boating Access
- 🏖️ State Beach
- 🏠 Environmental Justice Area
- 📏 SRWF Zone of Visual Influence (ZVI)
- ⬭ SRWF Visual Study Area
- Land Cover Classification**
- 🏡 Developed
- 🌾 Agriculture/Open Developed
- 🌲 Forest/Scrub
- 🏜️ Exposed Sand/Soil
- 🌿 Emergent Herbaceous Wetland
- 🌊 Open Water



Notes: 1. Basemap: ESRI ArcGIS Online "World Topographic Map" map service. 2. This map was generated in ArcMap on February 14, 2022.

J:\19195_Sunrise_Wind\Graphics\Figures\VISUAL\2022-02-09_BOEM_RFI\MMX019195_REF_Visually Sensitive Resources and Land Cover.mxd

Figure I-1.4 Land Cover and Visually Sensitive Resources within the PAPE Sheet 4

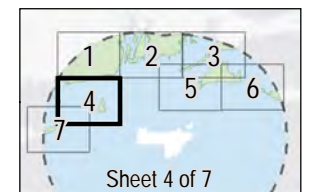


Sunrise Wind Farm Project

Outer Continental Shelf

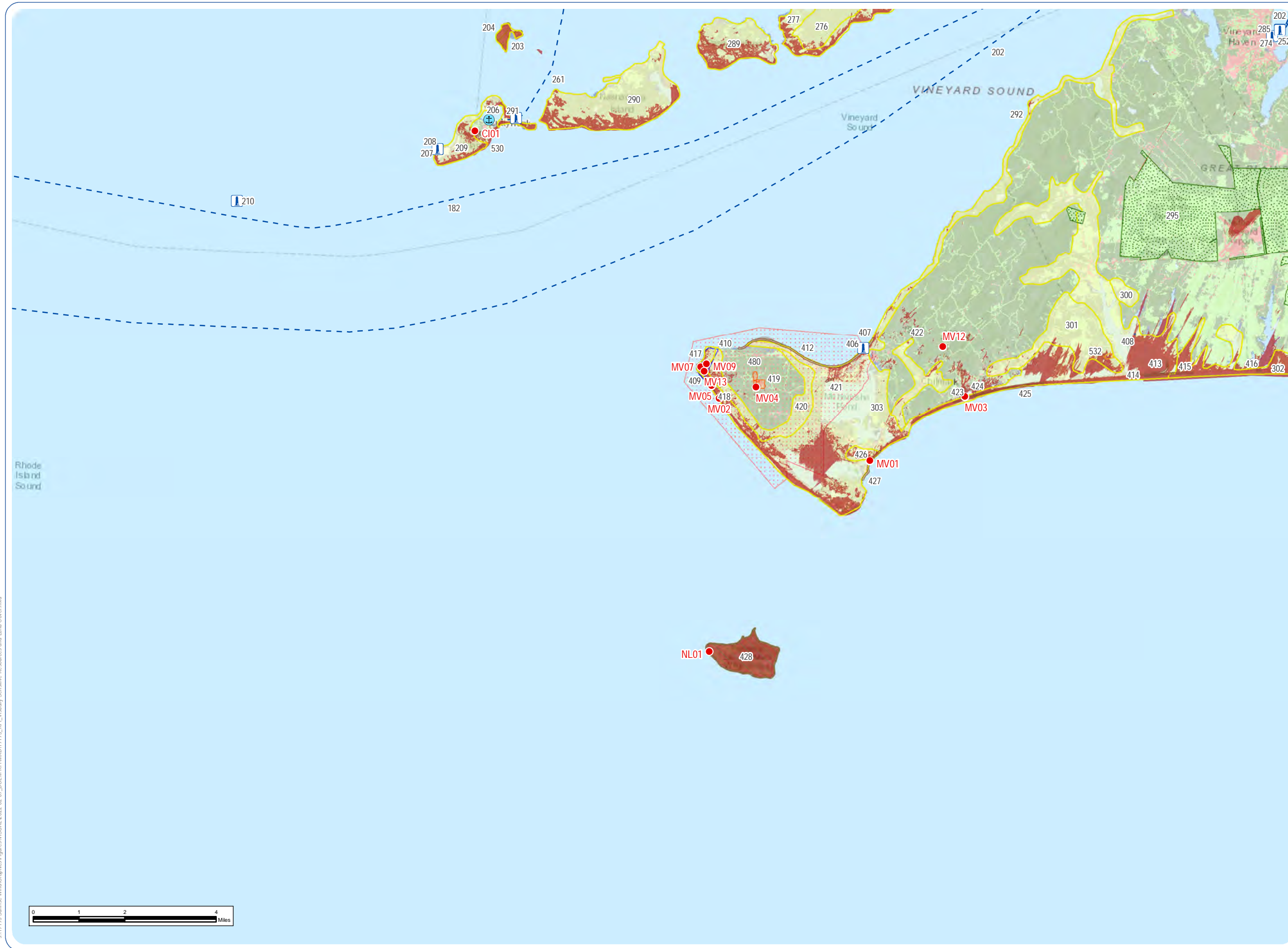
Land Cover and Visually Sensitive Resources within the PAPE

- Selected Key Observation Point
- ⚓ Lighthouse (not NRHP-Listed)
- - - Ferry Route
- State Scenic Byway
- National Historic Landmark
- NRHP-Listed Resource
- NRHP-Eligible Resource
- State Scenic Area
- ▨ National Wildlife Refuge
- ▨ State Wildlife Management Area
- State Park
- State Beach
- State Fishing and Boating Access
- State Beach
- Other State-Owned Environmental Land with Public Access
- Environmental Justice Area
- SRWF Zone of Visual Influence (ZVI)
- ▭ SRWF Visual Study Area
- Land Cover Classification**
- Developed
- Agriculture/Open Developed
- Forest/Scrub
- Exposed Sand/Soil
- Emergent Herbaceous Wetland
- Open Water



Notes: 1. Basemap: ESRI ArcGIS Online "World Topographic Map" map service. 2. This map was generated in ArcMap on February 14, 2022.

Figure I-1.5 Land Cover and Visually Sensitive Resources within the PAPE Sheet 5

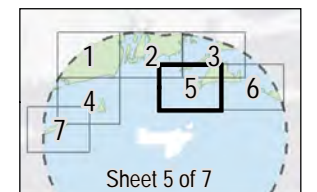


Sunrise Wind Farm Project

Outer Continental Shelf

Land Cover and Visually Sensitive Resources within the PAPE

- Selected Key Observation Point
- ⚓ Lighthouse (not NRHP-Listed)
- ⚓ Seaport
- - - Ferry Route
- NRHP-Listed Resource
- NRHP-Eligible Resource
- National Natural Landmark
- State Scenic Area
- National Wildlife Refuge
- State Wildlife Management Area
- State Forest
- State Fishing and Boating Access
- State Beach
- Environmental Justice Area
- SRWF Zone of Visual Influence (ZVI)
- SRWF Visual Study Area
- Land Cover Classification
- Developed
- Agriculture/Open Developed
- Forest/Scrub
- Exposed Sand/Soil
- Emergent Herbaceous Wetland
- Open Water



Notes: 1. Basemap: ESRI ArcGIS Online "World Topographic Map" map service. 2. This map was generated in ArcMap on February 14, 2022.

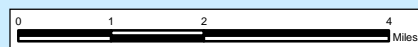
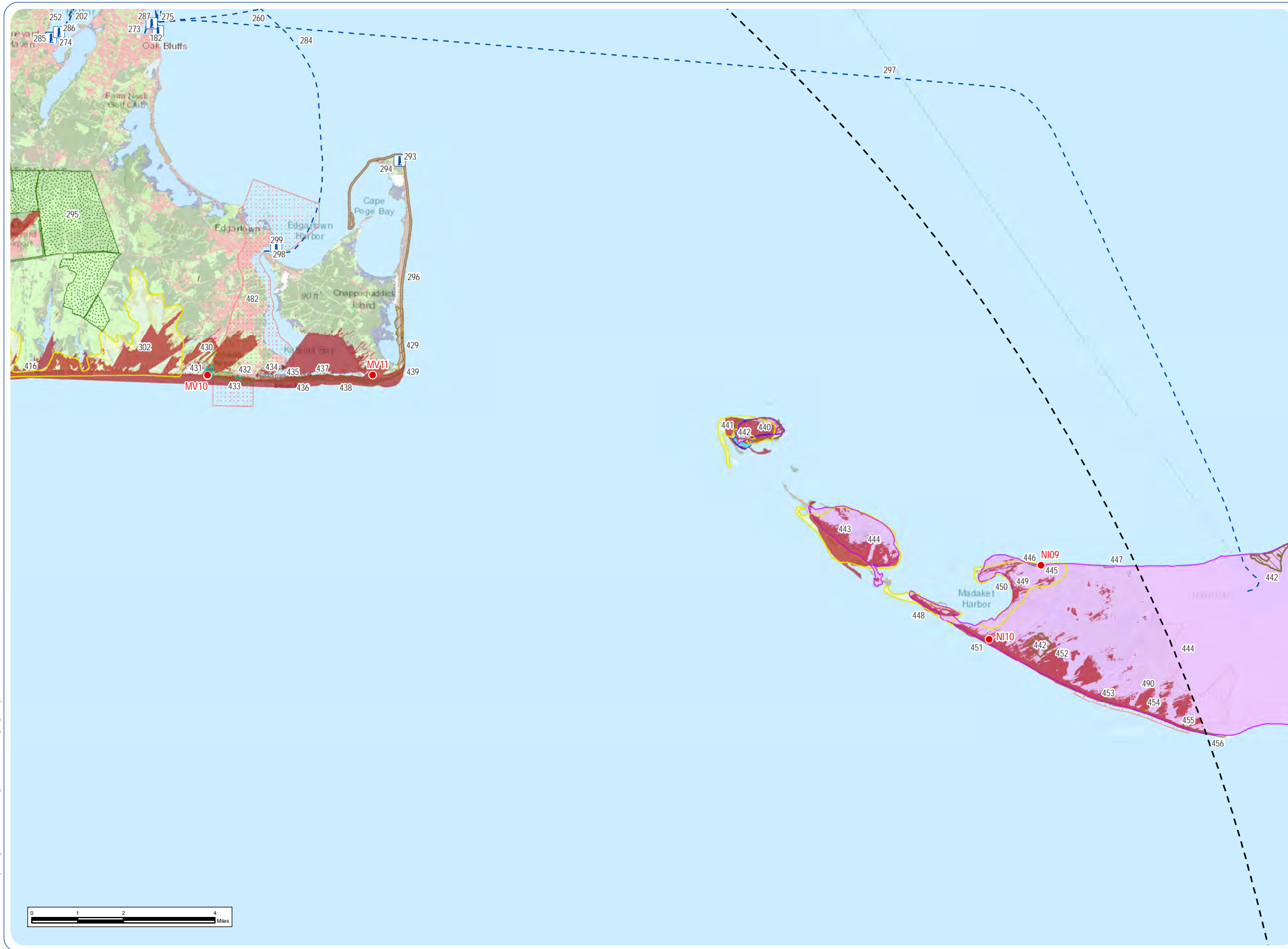


Figure I-1.6 Land Cover and Visually Sensitive Resources within the PAPE Sheet 6

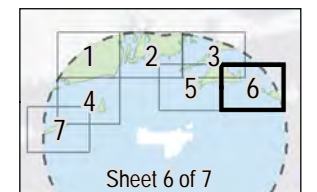


Sunrise Wind Farm Project

Outer Continental Shelf

Land Cover and Visually Sensitive Resources within the PAPE

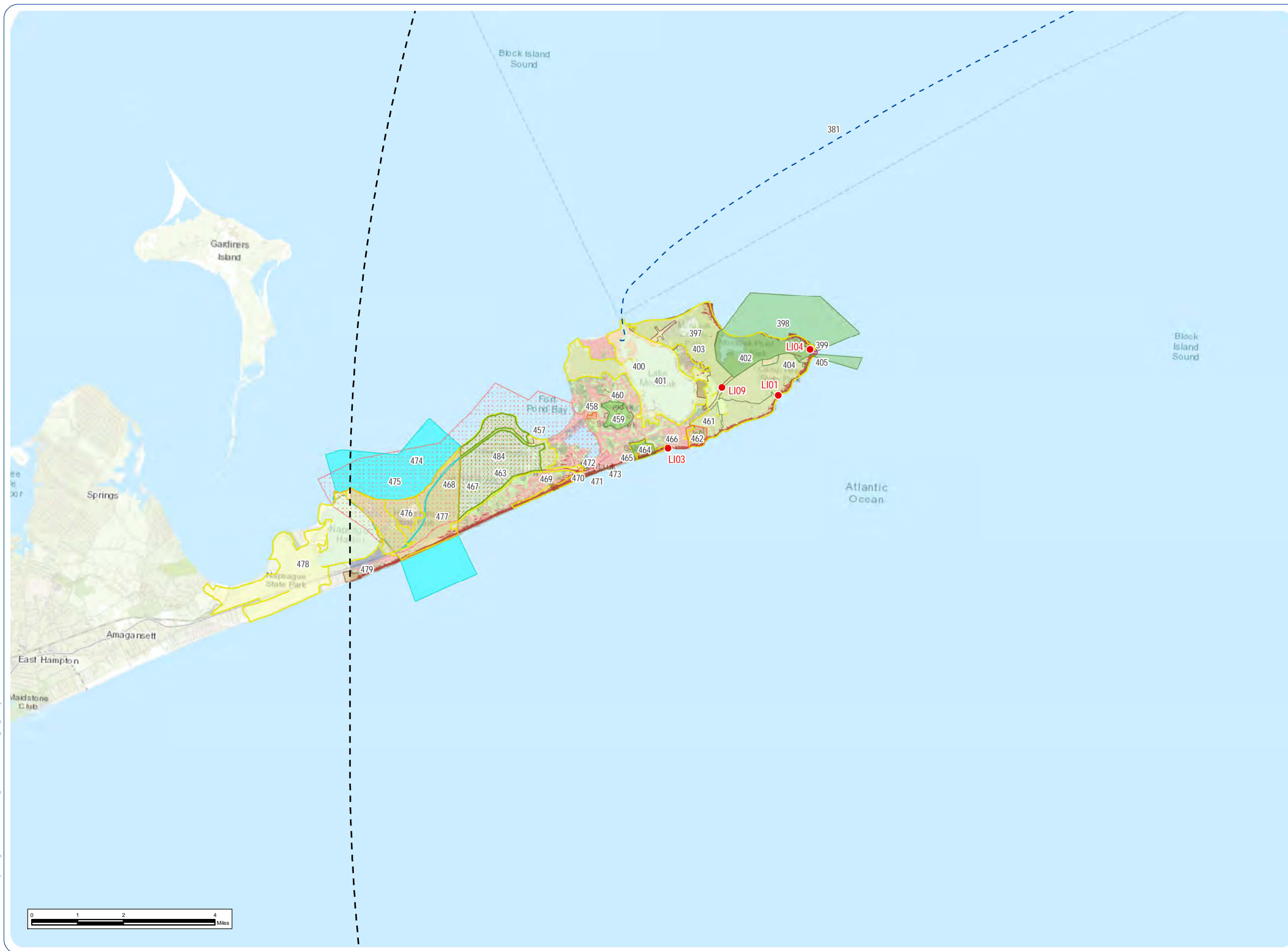
- Selected Key Observation Point
- ⏏ Lighthouse (not NRHP-Listed)
- - - Ferry Route
- National Historic Landmark
- NRHP-Listed Resource
- National Natural Landmark
- State Scenic Area
- National Wildlife Refuge
- State Wildlife Management Area
- State Park
- State Forest
- State Beach
- State Fishing and Boating Access
- State Beach
- Environmental Justice Area
- SRWF Zone of Visual Influence (ZVI)
- SRWF Visual Study Area
- Land Cover Classification**
- Developed
- Agriculture/Open Developed
- Forest/Scrub
- Exposed Sand/Soil
- Emergent Herbaceous Wetland
- Open Water



Notes: 1. Basemap: ESRI ArcGIS Online "World Topographic Map" map service. 2. This map was generated in ArcMap on February 14, 2022.



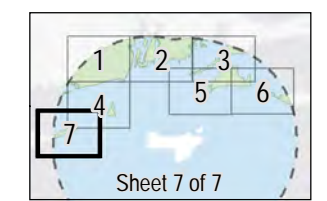
Figure I-1.7 Land Cover and Visually Sensitive Resources within the PAPE Sheet 7



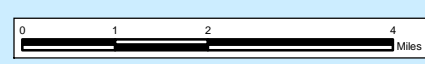
Sunrise Wind Farm Project

Outer Continental Shelf
 Land Cover and Visually Sensitive Resources within the PAPE

- Selected Key Observation Point
- - - Ferry Route
- National Historic Landmark
- NRHP-Listed Resource
- NRHP-Eligible Resource
- State Scenic Area
- State Park
- State Beach
- State Beach
- Other State-Owned Environmental Land with Public Access
- Environmental Justice Area
- SRWF Zone of Visual Influence (ZVI)
- SRWF Visual Study Area
- Land Cover Classification
- Developed
- Agriculture/Open Developed
- Forest/Scrub
- Exposed Sand/Soil
- Emergent Herbaceous Wetland
- Open Water



Notes: 1. Basemap: ESRI ArcGIS Online "World Topographic Map" map service. 2. This map was generated in ArcMap on February 14, 2022.



J:\19195 Sunrise Wind\Graphics\Figures\VISUAL\2022-02-09_BOEM\RFI\WXD19195_REF_Visually Sensitive Resources and Land Cover.mxd