

Atlantic Shores Offshore Wind Projects

National Historic Preservation Act: Section 106

What is Section 106 of the National Historic Preservation Act?

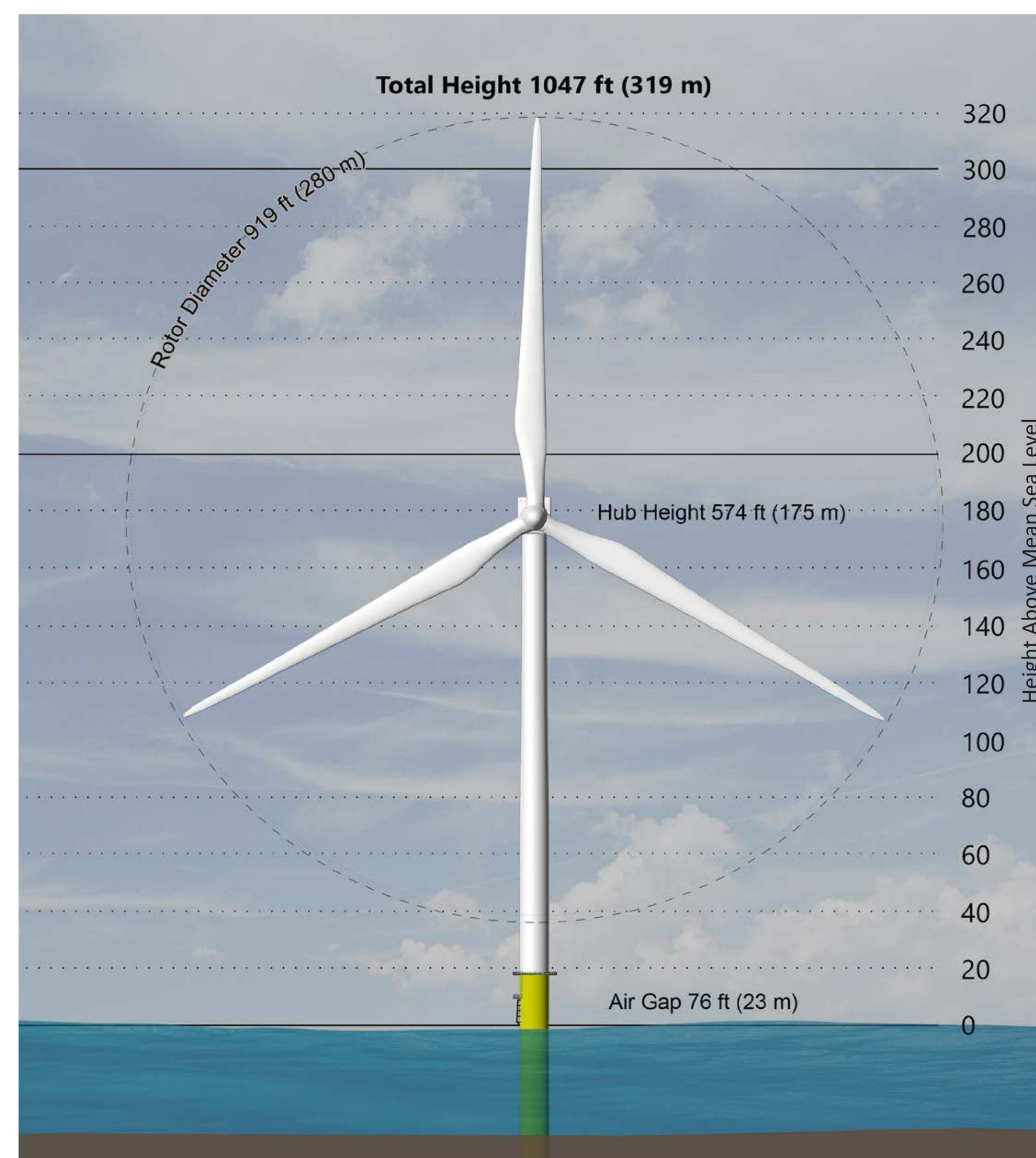
It is a regulation that requires Federal agencies to consider effects of undertakings on historic properties.

What will it do?

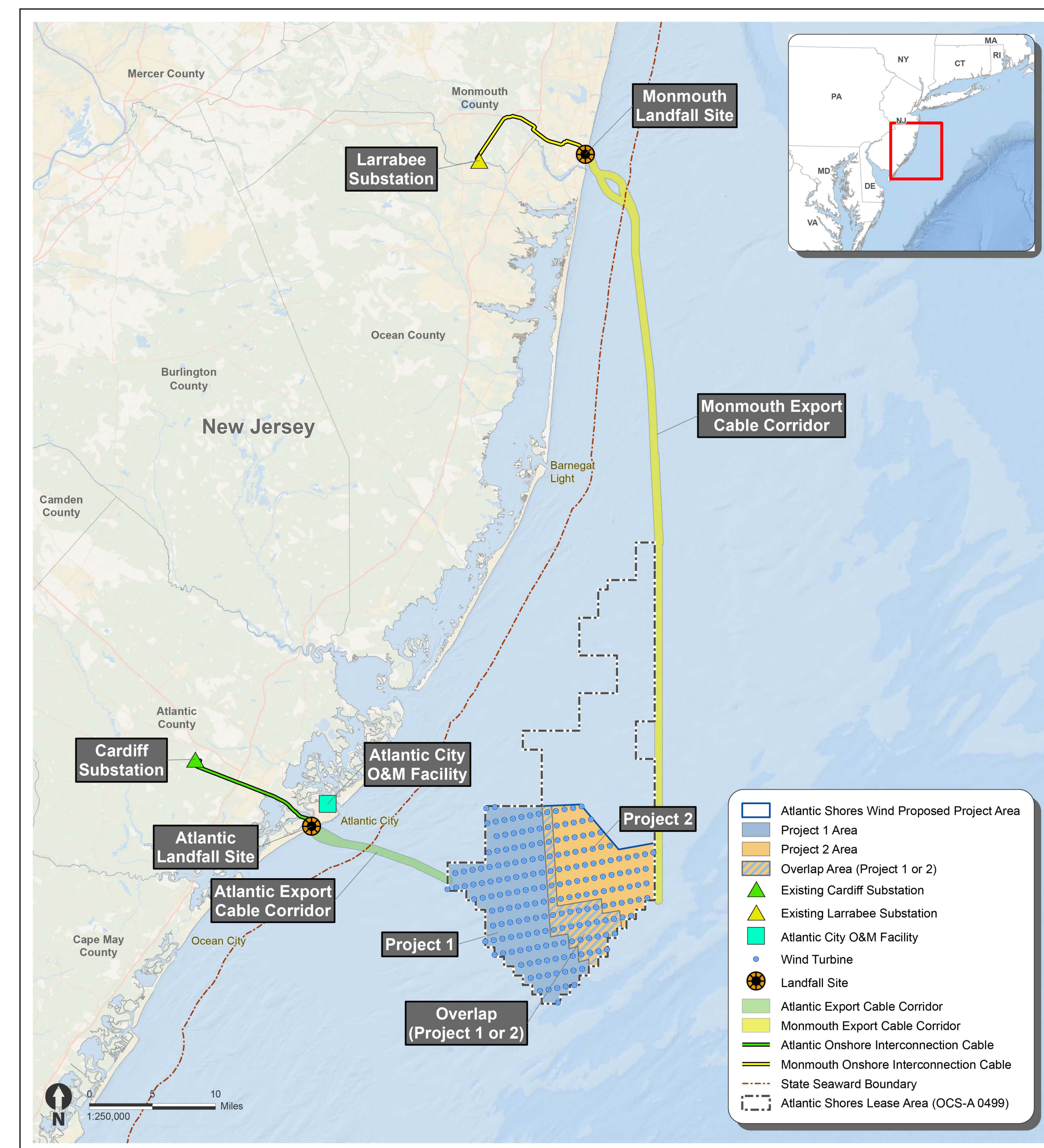
- Establish Area of Potential Effects (APE).
- Identify Historic Properties.
- Assess project effects on historic properties.
- Resolve adverse effects (avoid, minimize, or mitigate).

What are the National Register Criteria?

- Associated with significant historical events.
- Associated with the lives of persons significant in our past.
- Embody distinctive style, period, method of construction, or represent work of a master or possess high artistic values, or represent a district with components that may lack individual distinction.
- Properties that have yielded or may be likely to yield, information important in history or prehistory.



Maximum Wind Turbine Generator Dimensions



Project Location

What is the Area of Potential Effects (APE) for the Atlantic Shores Offshore Wind Projects?

BOEM needs your input: do you know of historic properties (Buildings, Structures, Objects, Archaeological Sites, Districts, Landscapes, Traditional Cultural Properties) that may be affected by these projects?

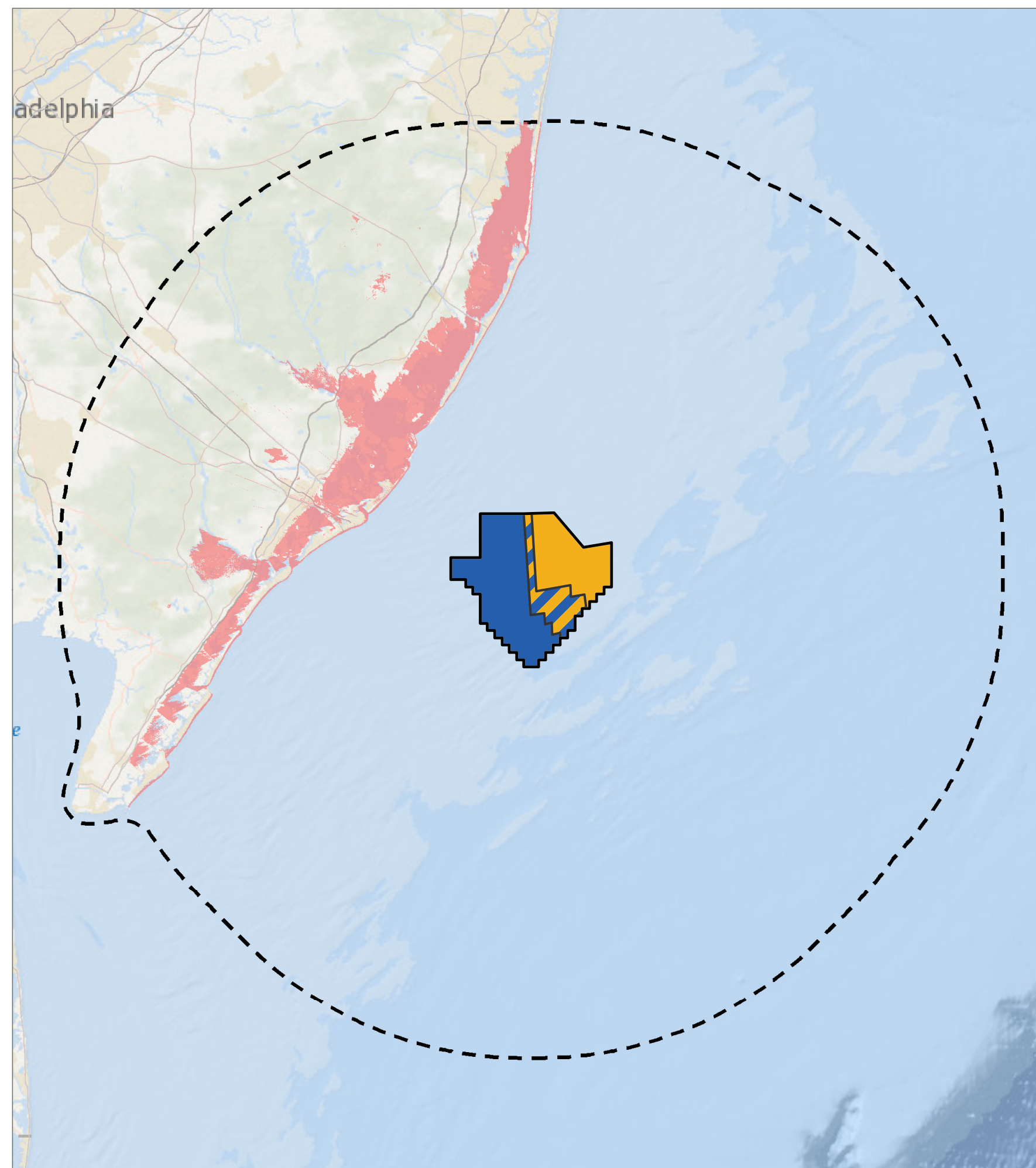
These projects have three categories of APE:

- 1. Terrestrial:** The depth and breadth of terrestrial areas potentially impacted by any ground disturbing activities
- 2. Marine:** The depth and breadth of seabed potentially impacted by any bottom-disturbing activities
- 3. Visual:** The viewshed from which renewable energy structures, whether located offshore or onshore, would be visible



Atlantic Shores Offshore Wind Projects

Offshore Facilities Visual Preliminary APE

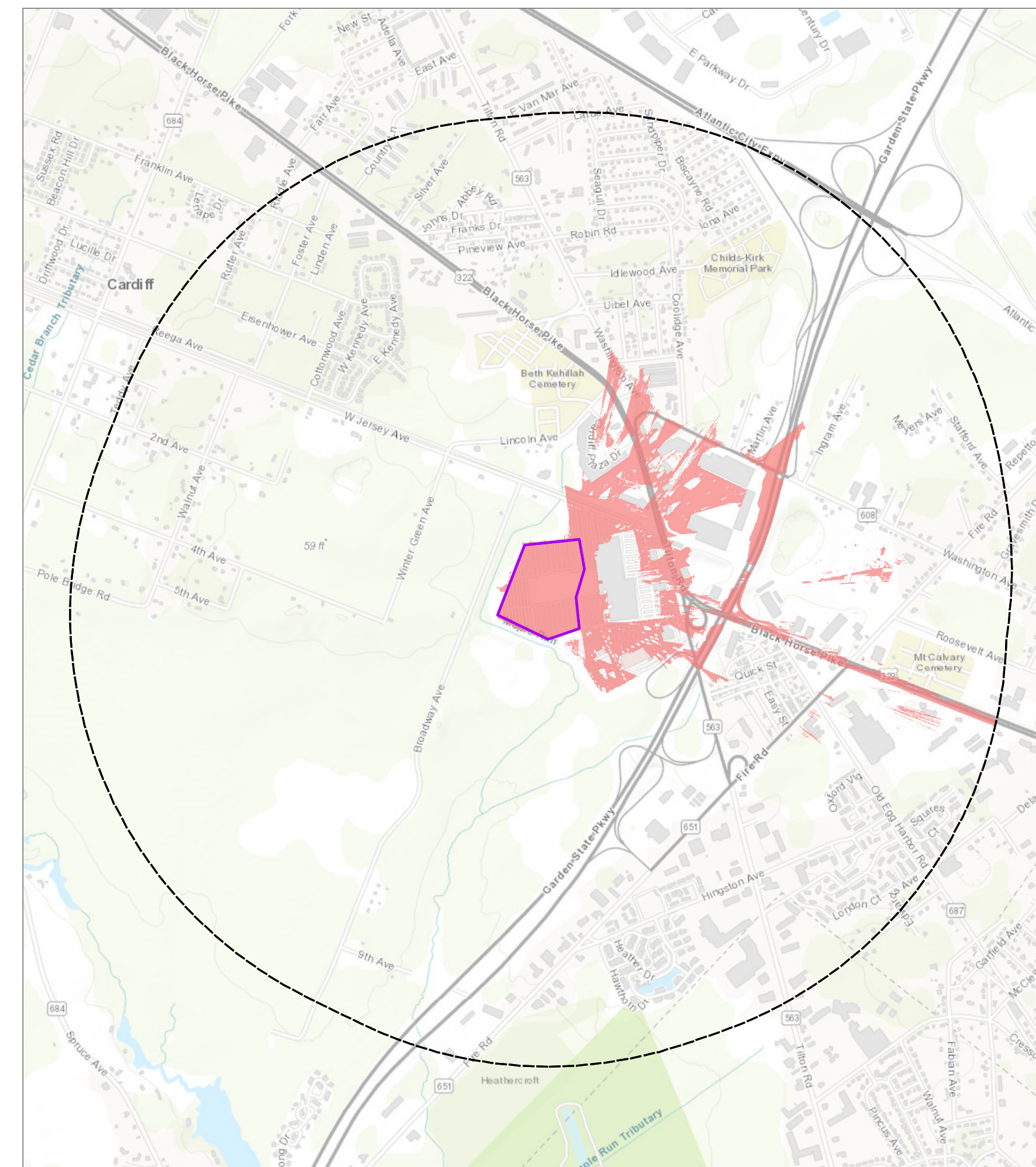


Atlantic Shores Offshore Wind
Lease Area OCS-A 0499
Offshore New Jersey

- 40-Mile Viewshed Radius
- Project 1 Area
- Project 2 Area
- Overlap Area (Project 1 or 2)
- Preliminary Area of Potential Effects (PAPE)
- Wind Turbine Area (WTA)

EDR Prepared September 17, 2021
Basemap: Esri ArcGIS Online "World Ocean Base" map service.

Onshore Facilities Visual Preliminary APE - Cardiff Substation

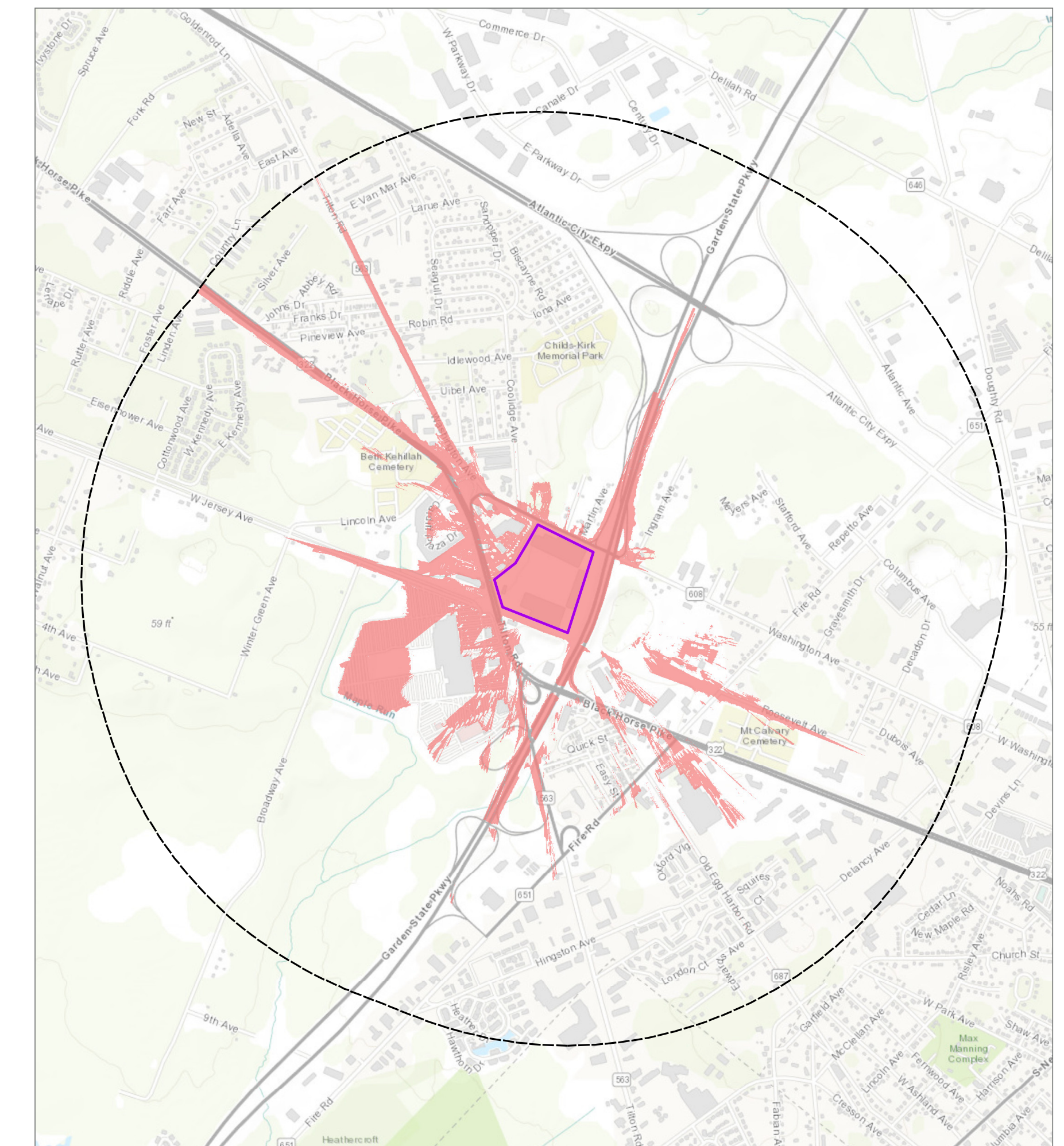


Atlantic Shores Offshore Wind
Egg Harbor Township, Atlantic County, New Jersey

- 1-Mile Viewshed Radius
- Proposed Substation Site
- Onshore Facilities Visual PAPE - Cardiff Substation

EDR Prepared September 16, 2021
Basemap: Esri ArcGIS Online "World Topographic Map" map service.

Onshore Facilities Visual Preliminary APE - Cardiff Alternative Substation



Atlantic Shores Offshore Wind
Egg Harbor Township, Atlantic County, New Jersey

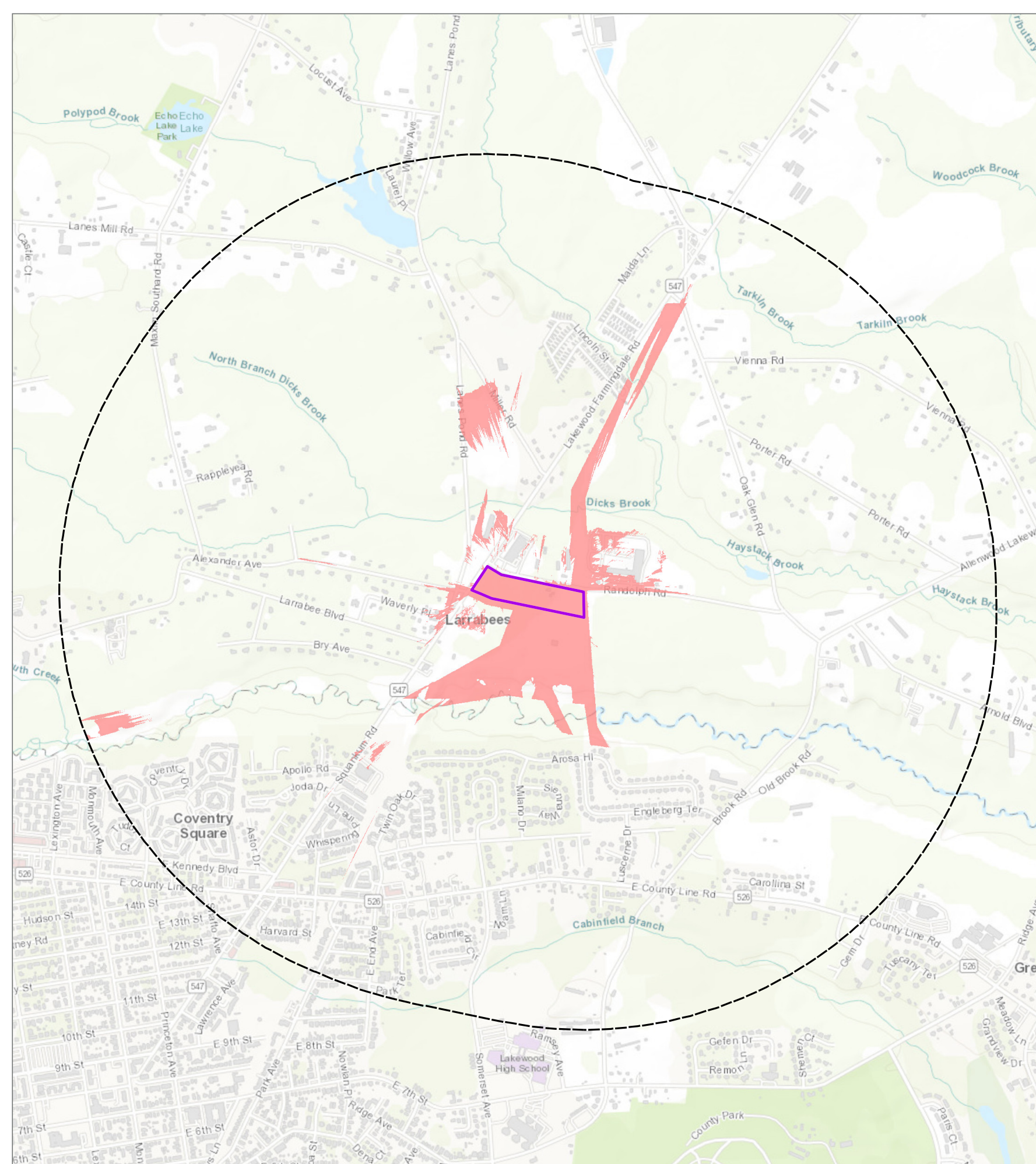
- 1-Mile Viewshed Radius
- Proposed Substation Site
- Onshore Facilities Visual PAPE - Cardiff Alternative Substation

EDR Prepared September 16, 2021
Basemap: Esri ArcGIS Online "World Topographic Map" map service.



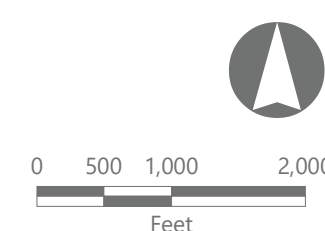
Atlantic Shores Offshore Wind Projects

Onshore Facilities Visual Preliminary APE - Larrabee Substation



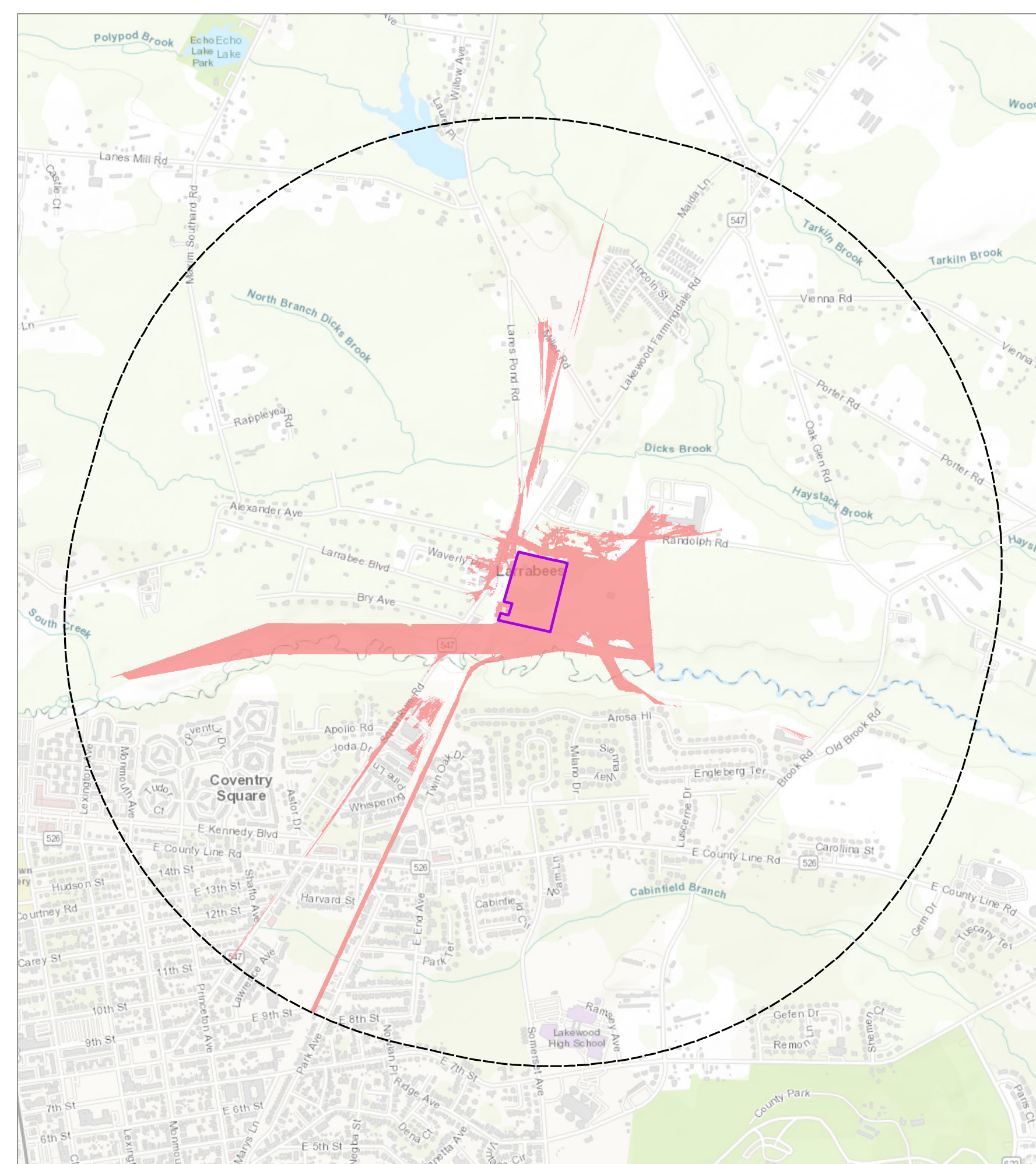
Atlantic Shores Offshore Wind
Howell Township, Atlantic County, New Jersey

- 1-Mile Viewshed Radius
- Proposed Substation
- Onshore Facilities Visual PAPE - Larrabee Substation



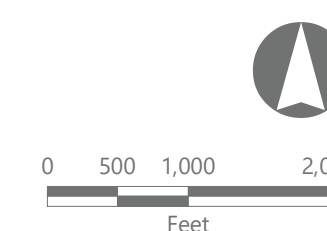
EDR Prepared September 16, 2021
Basemap: Esri ArcGIS Online "World Topographic Map" map service.

Onshore Facilities Visual Preliminary APE - Larrabee Alternative Substation



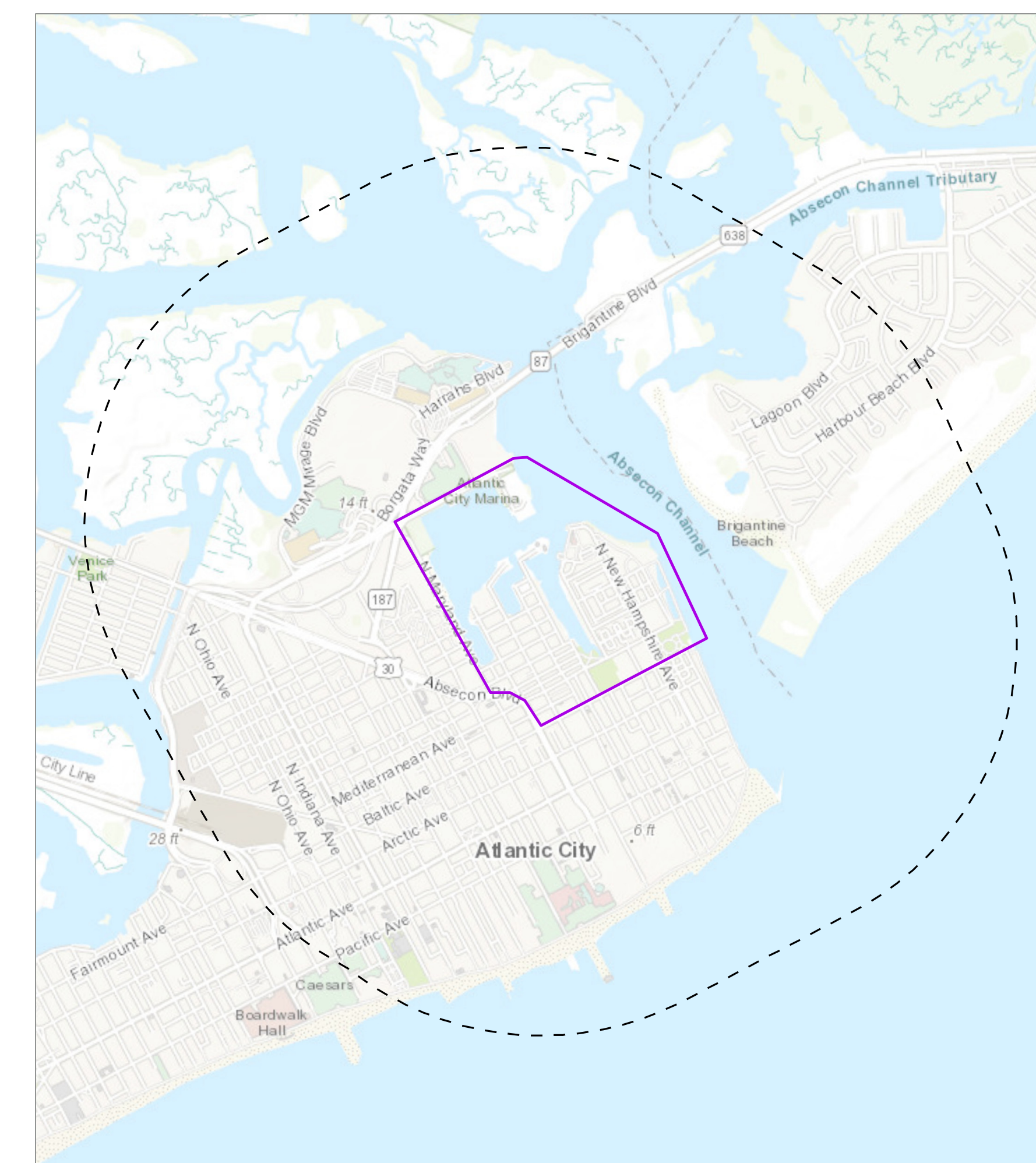
Atlantic Shores Offshore Wind
Howell Township, Atlantic County, New Jersey

- 1-Mile Viewshed Radius
- Proposed Substation Site
- Onshore Facilities Visual PAPE - Larrabee Alternative Substation



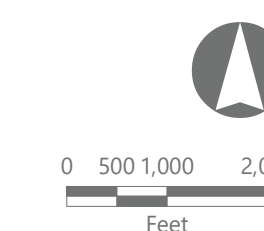
EDR Prepared September 16, 2021
Basemap: Esri ArcGIS Online "World Topographic Map" map service.

Operations & Maintenance Facility Preliminary APE



Atlantic Shores Offshore Wind
Atlantic City, Atlantic County, New Jersey

- O&M Facility PAPE for Physical Effects
- O&M Facility PAPE for Visual Effects



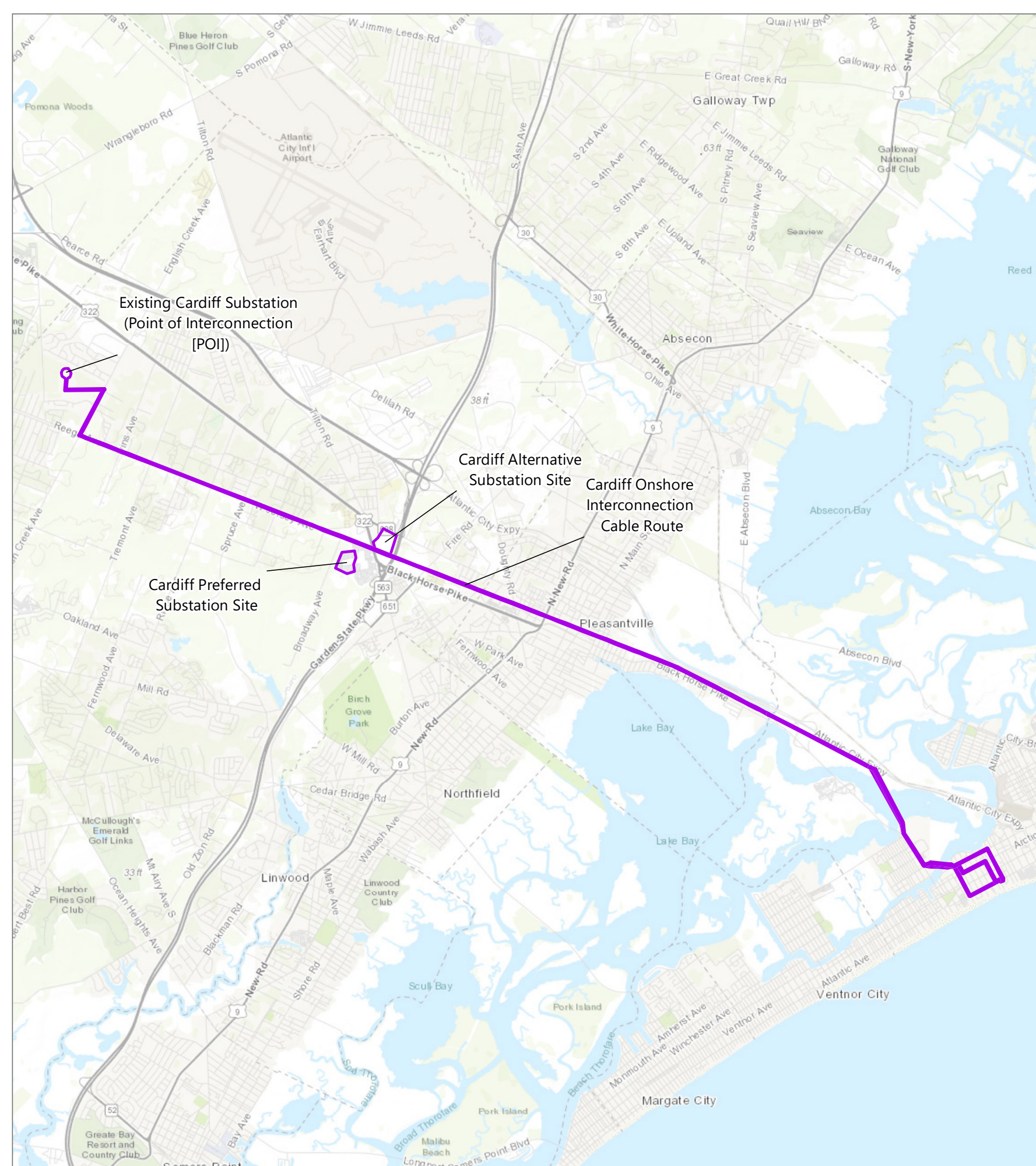
EDR Prepared September 17, 2021
Basemap: Esri ArcGIS Online "World Topographic Map" map service.





Atlantic Shores Offshore Wind Projects

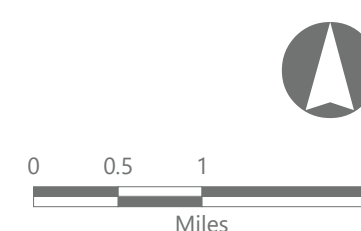
Cardiff Onshore Physical Effects Preliminary APE



Atlantic Shores Offshore Wind

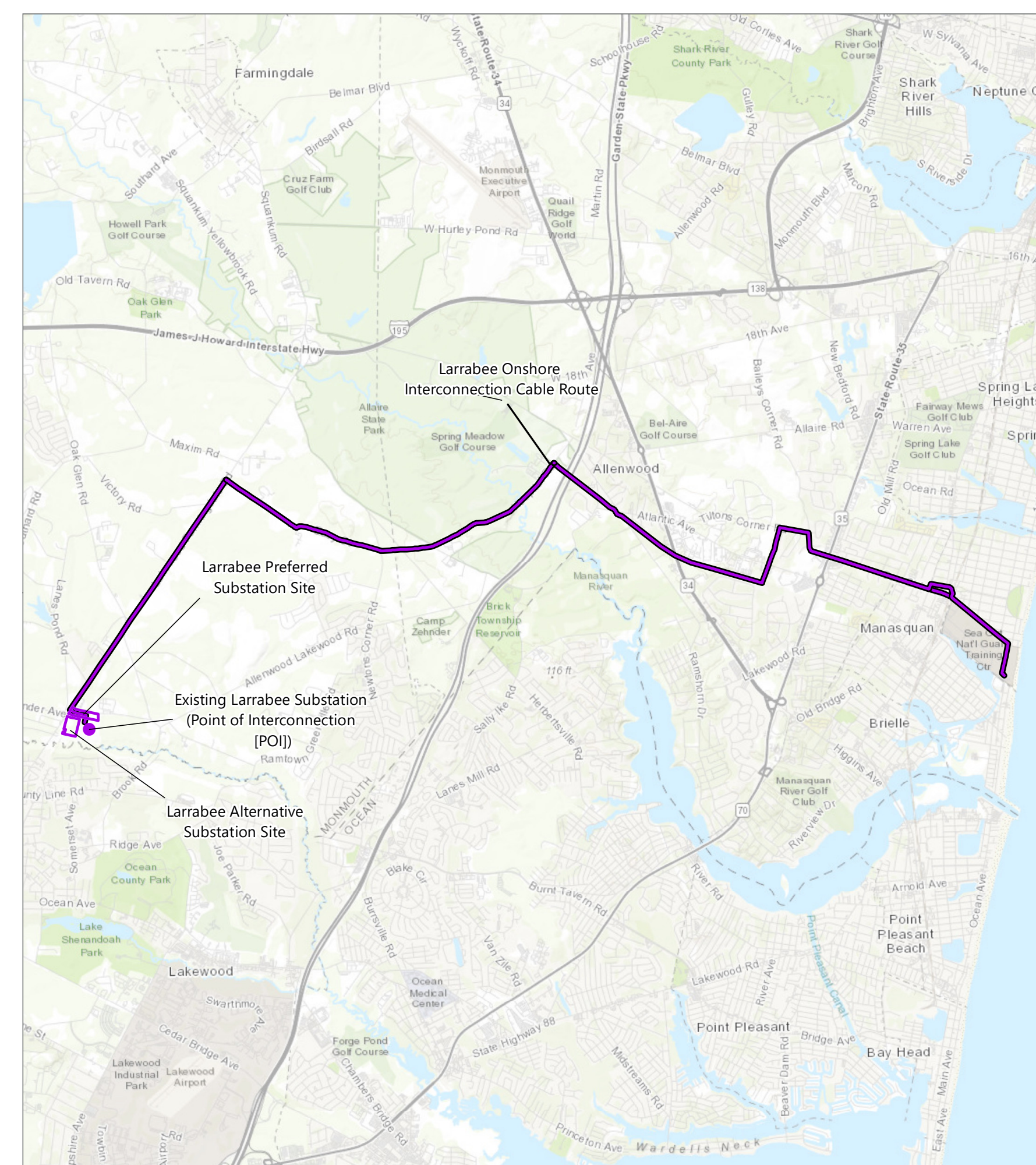
Atlantic County, New Jersey

Cardiff Physical Effects PAPE



EDR Prepared September 16, 2021 Basemap: Esri ArcGIS Online "World Topographic Map" map service.

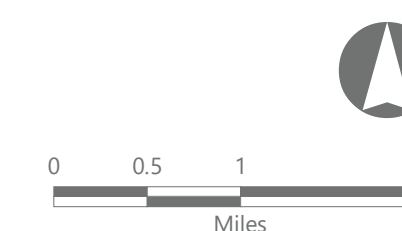
Larrabee Onshore Physical Effects Preliminary APE



Atlantic Shores Offshore Wind

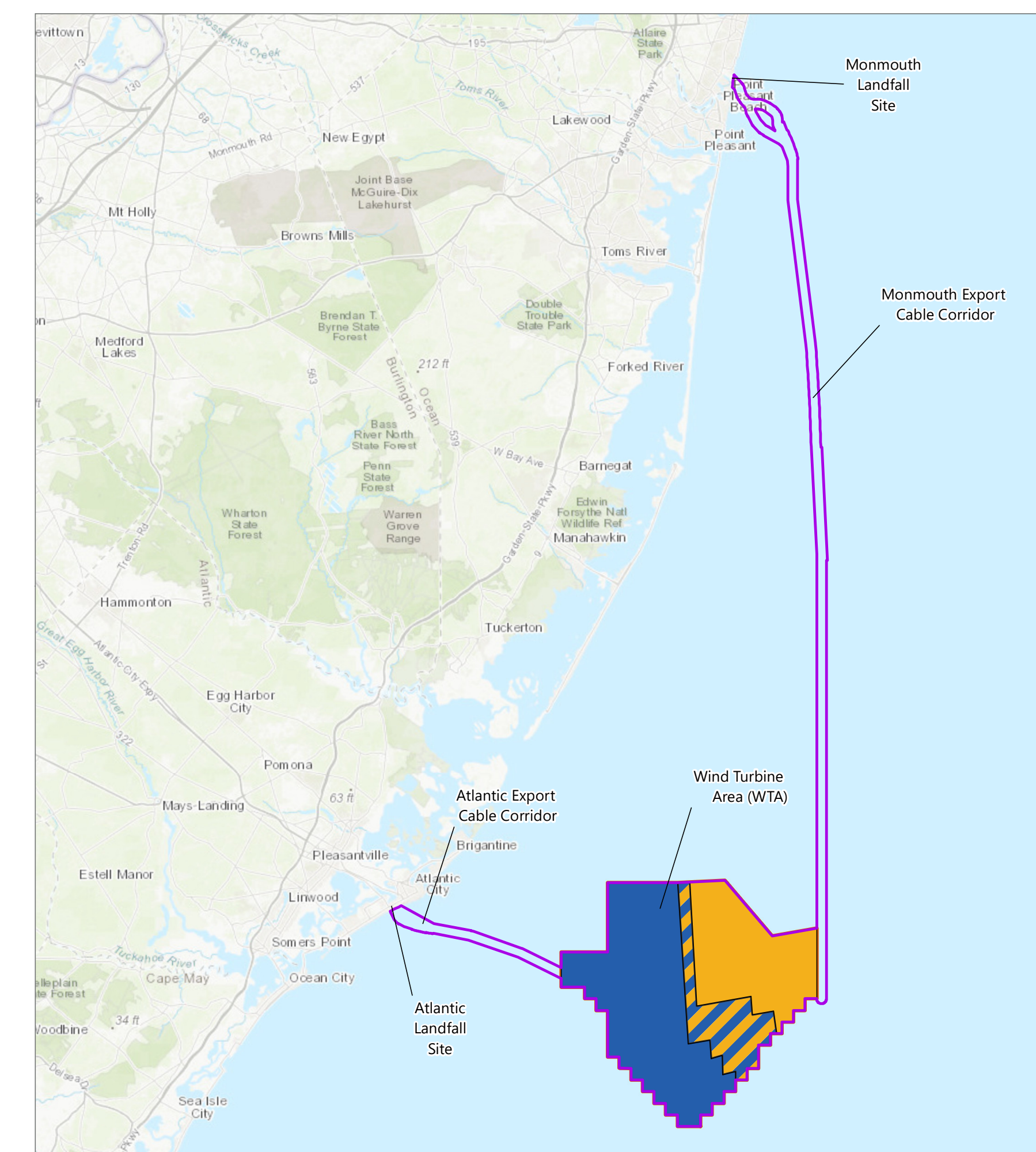
Monmouth County, New Jersey

Larrabee Physical Effects PAPE



EDR Prepared September 16, 2021 Basemap: Esri ArcGIS Online "World Topographic Map" map service.

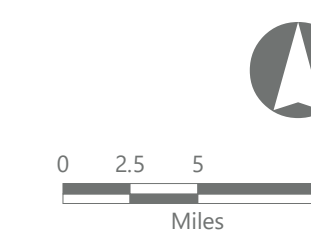
Marine Physical Effects Preliminary APE



Atlantic Shores Offshore Wind

Lease Area OCS-A 0499
Offshore New Jersey

- Project 1 Area
- Project 2 Area
- Overlap Area (Project 1 or 2)
- Marine Physical Effects PAPE



EDR Prepared September 17, 2021 Basemap: Esri ArcGIS Online "World Topographic Map" map service.



Request for Public Input

BOEM seeks comment and input regarding the identification of historic properties and/or potential effects to historic properties from activities associated with approval of the Projects, as well as reasonable alternatives (e.g., size, geographic, or other restrictions on construction and siting of facilities and activities) and potential mitigation measures to be analyzed in the EIS, as well as provide additional information. Mitigation measures may include ways to avoid, minimize, or otherwise treat and resolve adverse effects on historic properties.