

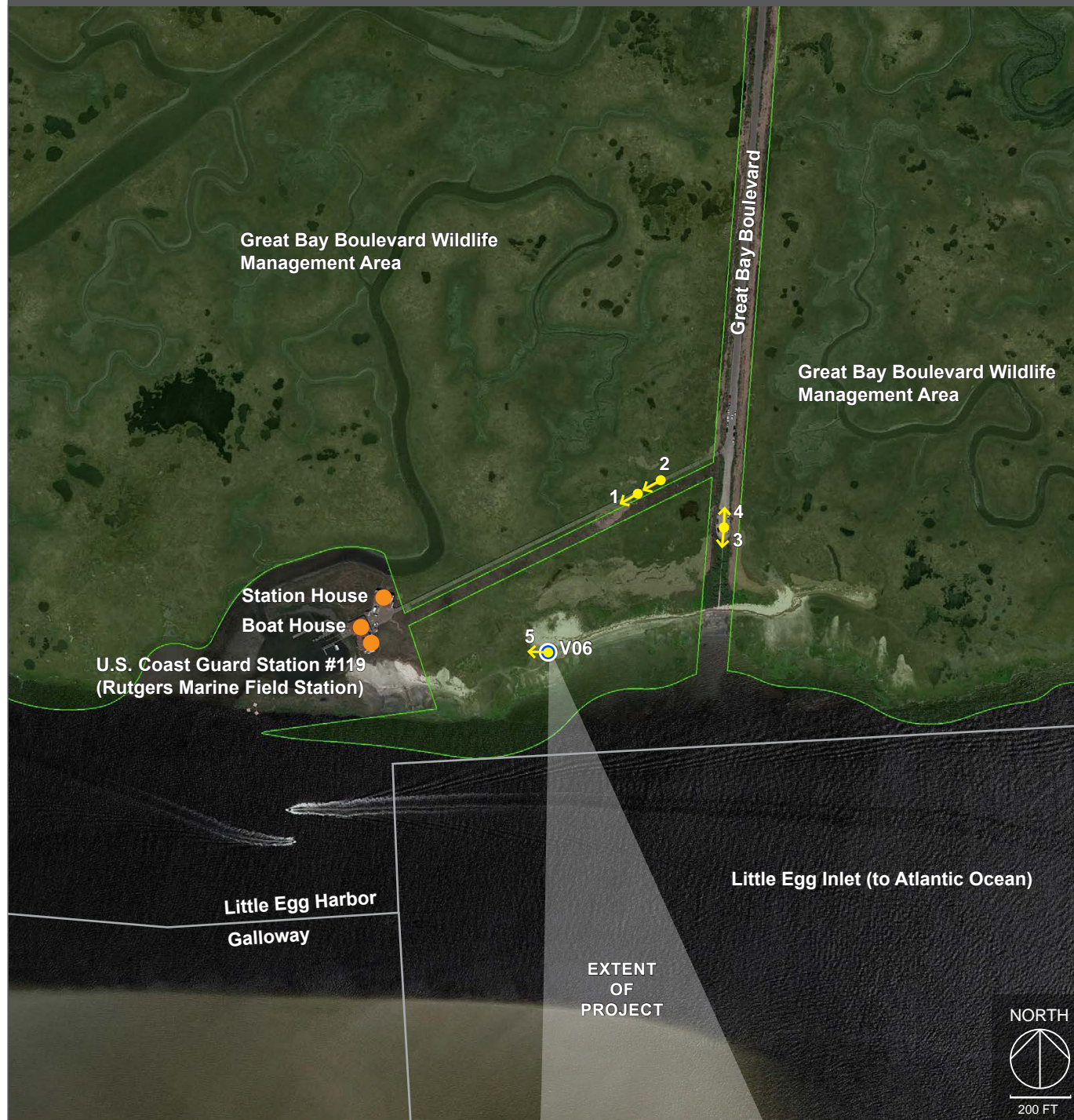
V06. Great Bay Boulevard Wildlife Management Area Little Egg Harbor Township, Ocean County

LANDSCAPE INFORMATION

Field Identification Number. 274
Context Image Dates. 20 September 2018
Site Map Aerial Date. 24 May 2018
Physiographic Area. Marsh + Bay
Landscape Similarity Zone (LSZ). Marshland

Scenic Resources. Viewpoint from Great Bay Boulevard Wildlife Management Area. Viewpoint near three structures eligible for the NRHP: U.S. Coast Guard Station #119 (Rutgers Marine Field Station); Station House; and Boat House.

SITE MAP



CONTEXT IMAGES



1. View looking southwest from access gate on boardwalk toward U.S. Coast Guard Station #119 (Rutgers Marine Field Station). Atlantic City skyline is visible on left side of image.



2. View looking southwest from boardwalk toward U.S. Coast Guard Station #119 (Rutgers Marine Field Station) access gate.



3. View looking south from end of Great Bay Boulevard toward beach access.



4. View looking north from the end of Great Bay Boulevard.



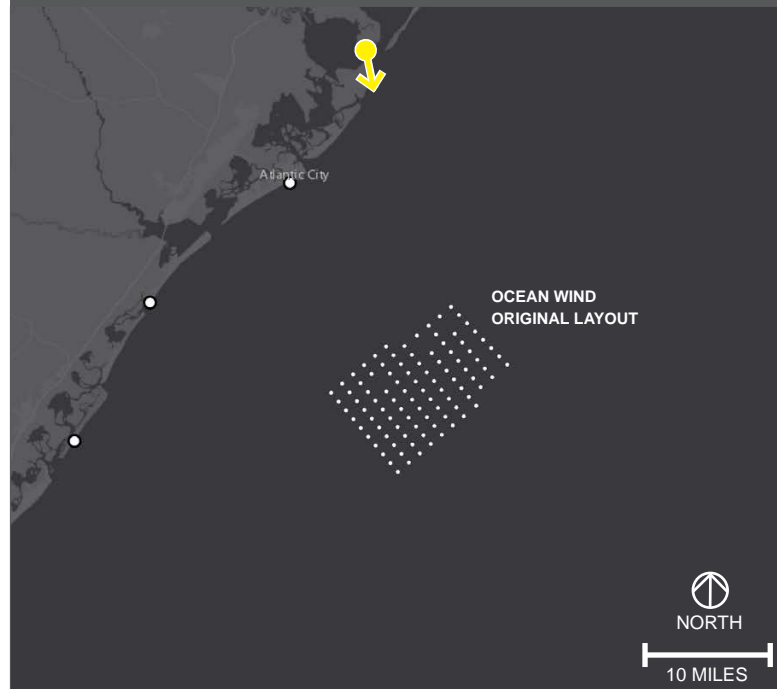
5. View looking west from visualization location on beach toward U.S. Coast Guard Station #119 (Rutgers Marine Field Station).

PANORAMIC VISUALIZATION



EXTENT OF NORMAL VIEW

CONTEXT MAP



ALTERNATIVES ANALYSIS

Original Layout: Turbine layout submitted in COP.

Turbine Dimensions: 906 ft blade tip height, 512 ft hub height, 788 ft rotor diameter.

TURBINE DIMENSIONS

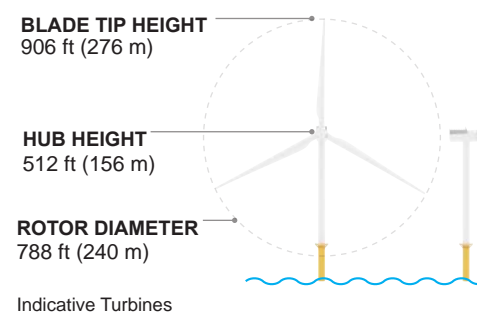


IMAGE DATA

LOCATION

| | |
|-------------------|-------------------|
| Date | 20 September 2018 |
| Time | 9:40 AM |
| Latitude | 39.508809° |
| Longitude | -74.322008° |
| Direction of View | South |
| LSZ | Marshland |

ENVIRONMENTAL

| | |
|--------------------|----------|
| Temperature (°F) | 72° |
| Humidity | 73% |
| Visibility | 10 mi |
| Wind Direction | E |
| Wind Speed | 7 mph |
| Weather Conditions | Overcast |

PHOTO

| | |
|----------------------|-------------|
| Field ID | 274 |
| Camera | NIKON D5500 |
| Resolution | 300 dpi |
| Focal Length | 50mm |
| Viewer Eye Elevation | 7' |

PROJECT VIEW

| | |
|---|-------------|
| Distance to Project | 21.85 miles |
| Project Horizontal Field of View (HFOV) | 30° |

PROJECT INFRASTRUCTURE

| | |
|--------------------------------|----|
| Number of Turbines | 99 |
| Number of offshore Substations | 3 |

V06

Great Bay Boulevard
Wildlife Management Area

Little Egg Harbor Township,
Ocean County

OCEAN WIND

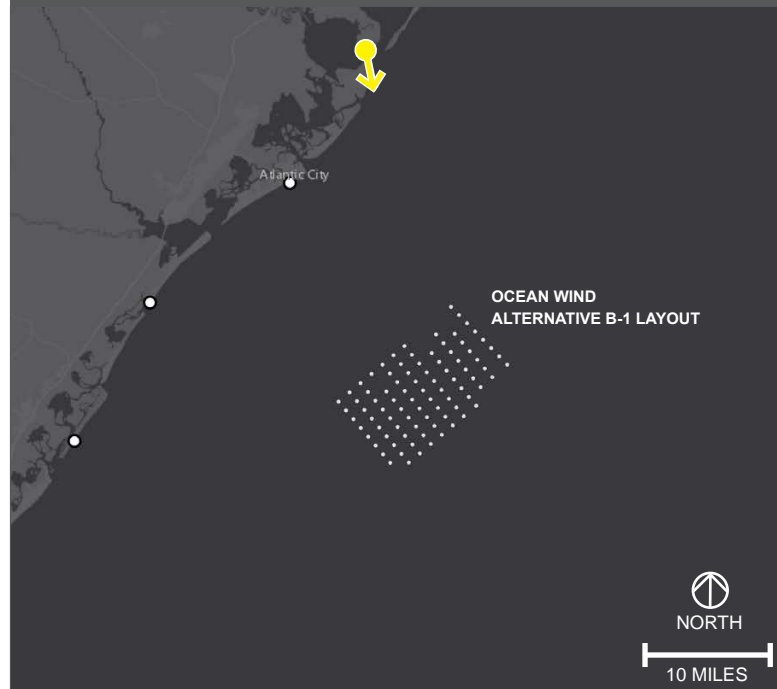
tjd&a | Landscape Architects & Planners

PANORAMIC VISUALIZATION



EXTENT OF NORMAL VIEW

CONTEXT MAP



ALTERNATIVES ANALYSIS

Alternative B-1: Exclusion of up to nine turbine positions in the first two shoreward strings of turbines that includes F01 to K01 and B02 to D02.

Turbine dimensions: 853 ft blade tip height, 492 ft hub height, 722 ft rotor diameter.

TURBINE DIMENSIONS

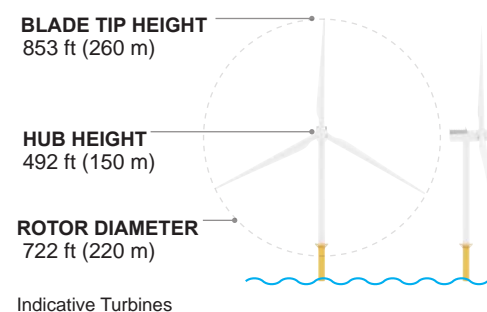


IMAGE DATA

LOCATION

| | |
|-------------------|-------------------|
| Date | 20 September 2018 |
| Time | 9:40 AM |
| Latitude | 39.508809° |
| Longitude | -74.322008° |
| Direction of View | South |
| LSZ | Marshland |

ENVIRONMENTAL

| | |
|--------------------|----------|
| Temperature (°F) | 72° |
| Humidity | 73% |
| Visibility | 10 mi |
| Wind Direction | E |
| Wind Speed | 7 mph |
| Weather Conditions | Overcast |

PHOTO

| | |
|----------------------|-------------|
| Field ID | 274 |
| Camera | NIKON D5500 |
| Resolution | 300 dpi |
| Focal Length | 50mm |
| Viewer Eye Elevation | 7' |

PROJECT VIEW

| | |
|---|-------------|
| Distance to Project | 21.85 miles |
| Project Horizontal Field of View (HFOV) | 28° |

PROJECT INFRASTRUCTURE

| | |
|--------------------------------|----|
| Number of Turbines | 89 |
| Number of offshore Substations | 3 |

V06

Great Bay Boulevard
Wildlife Management Area

Little Egg Harbor Township,
Ocean County

OCEAN WIND

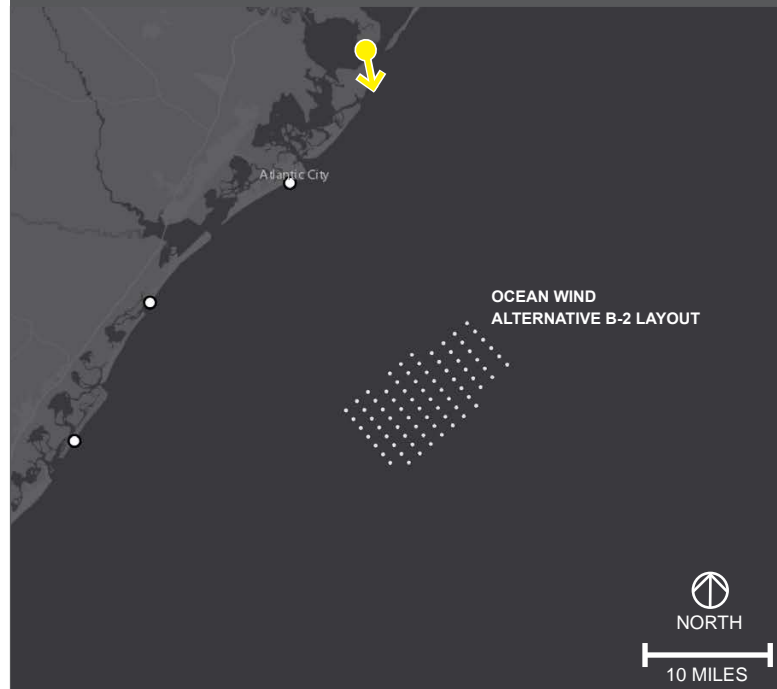
tjd&a | Landscape Architects & Planners

PANORAMIC VISUALIZATION



EXTENT OF NORMAL VIEW

CONTEXT MAP



ALTERNATIVES ANALYSIS

Alternative B-2: Exclusion of up to 19 turbine positions in the first three shoreward strings of turbines that includes F01 to K01, A02 to K02, A03 and C03.

Turbine Dimensions: 906 ft blade tip height, 512 ft hub height, 788 ft rotor diameter.

TURBINE DIMENSIONS

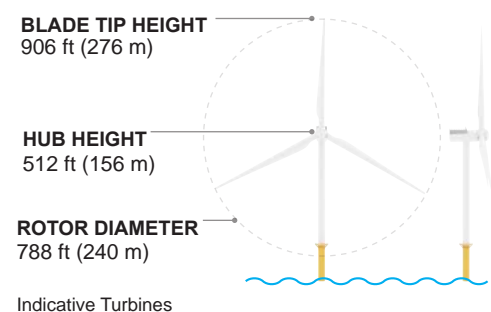


IMAGE DATA

LOCATION

| | |
|-------------------|-------------------|
| Date | 20 September 2018 |
| Time | 9:40 AM |
| Latitude | 39.508809° |
| Longitude | -74.322008° |
| Direction of View | South |
| LSZ | Marshland |

ENVIRONMENTAL

| | |
|--------------------|----------|
| Temperature (°F) | 72° |
| Humidity | 73% |
| Visibility | 10 mi |
| Wind Direction | E |
| Wind Speed | 7 mph |
| Weather Conditions | Overcast |

PHOTO

| | |
|----------------------|-------------|
| Field ID | 274 |
| Camera | NIKON D5500 |
| Resolution | 300 dpi |
| Focal Length | 50mm |
| Viewer Eye Elevation | 7' |

PROJECT VIEW

| | |
|---|-------------|
| Distance to Project | 23.53 miles |
| Project Horizontal Field of View (HFOV) | 27° |

PROJECT INFRASTRUCTURE

| | |
|--------------------------------|----|
| Number of Turbines | 79 |
| Number of offshore Substations | 3 |

V06

Great Bay Boulevard
Wildlife Management Area

Little Egg Harbor Township,
Ocean County

OCEAN WIND

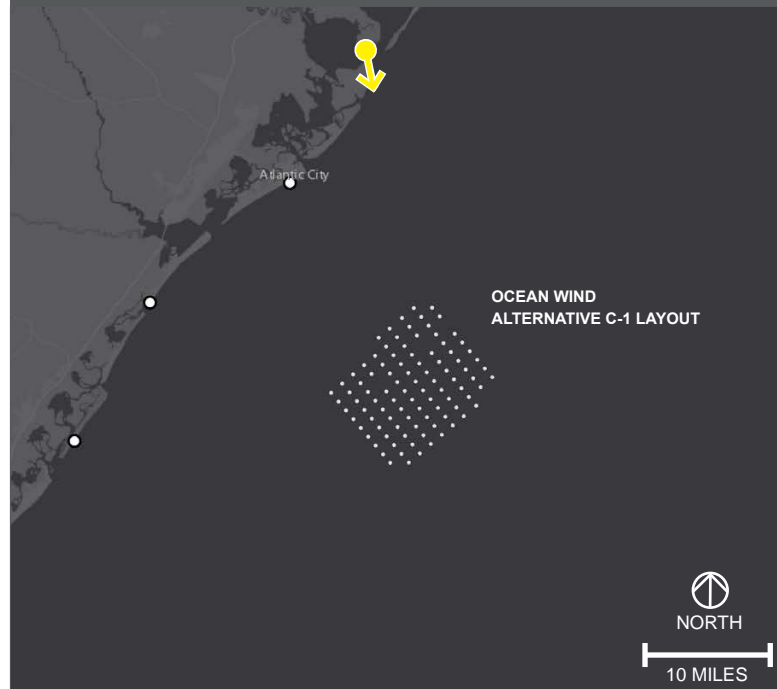
tjd&a | Landscape Architects & Planners

PANORAMIC VISUALIZATION



EXTENT OF NORMAL VIEW

CONTEXT MAP



ALTERNATIVES ANALYSIS

Alternative C-1: Exclusion of eight turbine positions (A02 to A09), relocation of eight turbine positions to the northern portion of the Ocean Wind Lease Area (C00 to F00 and B01 to E01).

Turbine Dimensions: 906 ft blade tip height, 512 ft hub height, 788 ft rotor diameter.

TURBINE DIMENSIONS

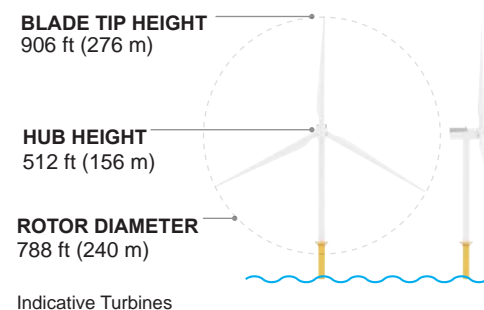


IMAGE DATA

LOCATION

| | |
|-------------------|-------------------|
| Date | 20 September 2018 |
| Time | 9:40 AM |
| Latitude | 39.508809° |
| Longitude | -74.322008° |
| Direction of View | South |
| LSZ | Marshland |

ENVIRONMENTAL

| | |
|--------------------|----------|
| Temperature (°F) | 72° |
| Humidity | 73% |
| Visibility | 10 mi |
| Wind Direction | E |
| Wind Speed | 7 mph |
| Weather Conditions | Overcast |

PHOTO

| | |
|----------------------|-------------|
| Field ID | 274 |
| Camera | NIKON D5500 |
| Resolution | 300 dpi |
| Focal Length | 50mm |
| Viewer Eye Elevation | 7' |

PROJECT VIEW

| | |
|---|-------------|
| Distance to Project | 21.19 miles |
| Project Horizontal Field of View (HFOV) | 27° |

PROJECT INFRASTRUCTURE

| | |
|--------------------------------|----|
| Number of Turbines | 98 |
| Number of offshore Substations | 3 |

V06

Great Bay Boulevard
Wildlife Management Area

Little Egg Harbor Township,
Ocean County

OCEAN WIND

tjd&a | Landscape Architects & Planners

V06. Great Bay Boulevard Wildlife Management Area Little Egg Harbor Township, Ocean County



**NORMAL VIEW
EXISTING IMAGE**

V06

Great Bay
Boulevard Wildlife
Management Area

**Little Egg Harbor
Township,
Ocean County**

VIEW NOTE

When printed on 11x17 inch paper, viewer should hold this image approximately 21 inches from eye to replicate actual view.

OCEAN WIND

tjd&a

V06. Great Bay Boulevard Wildlife Management Area Little Egg Harbor Township, Ocean County



**NORMAL VIEW
VISUALIZATION**

V06

Great Bay
Boulevard Wildlife
Management Area

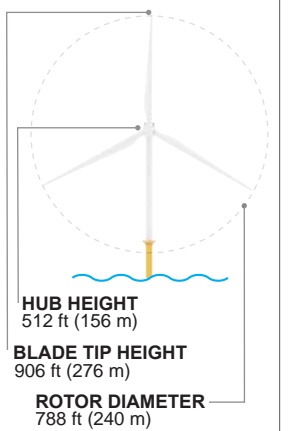
**Little Egg Harbor
Township,
Ocean County**

**ORIGINAL
VISUALIZATION**

VIEW NOTE

When printed on 11x17 inch paper, viewer should hold this image approximately 21 inches from eye to replicate actual view.

TURBINE DIMENSIONS



OCEAN WIND

tjd&a

V06. Great Bay Boulevard Wildlife Management Area
Little Egg Harbor Township, Ocean County

ALTERNATIVE B-1 VISUALIZATION



**NORMAL VIEW
VISUALIZATION**

V06

Great Bay
Boulevard Wildlife
Management Area

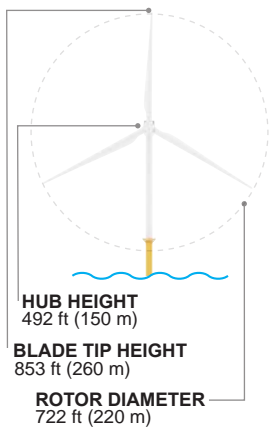
**Little Egg Harbor
Township,
Ocean County**

**ALTERNATIVE B-1
VISUALIZATION**

VIEW NOTE

When printed on 11x17 inch paper, viewer should hold this image approximately 21 inches from eye to replicate actual view.

TURBINE DIMENSIONS



OCEAN WIND



V06. Great Bay Boulevard Wildlife Management Area Little Egg Harbor Township, Ocean County

ALTERNATIVE B-2 VISUALIZATION



NORMAL VIEW VISUALIZATION

V06

Great Bay Boulevard Wildlife Management Area

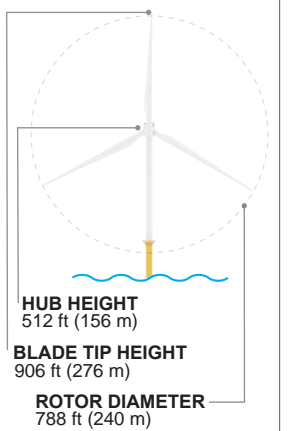
Little Egg Harbor Township, Ocean County

ALTERNATIVE B-2 VISUALIZATION

VIEW NOTE

When printed on 11x17 inch paper, viewer should hold this image approximately 21 inches from eye to replicate actual view.

TURBINE DIMENSIONS



OCEAN WIND



V06. Great Bay Boulevard Wildlife Management Area Little Egg Harbor Township, Ocean County

ALTERNATIVE C-1 VISUALIZATION



NORMAL VIEW VISUALIZATION

V06

Great Bay Boulevard Wildlife Management Area

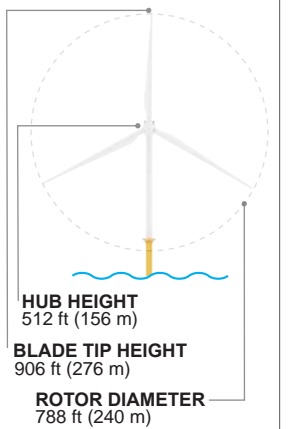
Little Egg Harbor Township, Ocean County

ALTERNATIVE C-1 VISUALIZATION

VIEW NOTE

When printed on 11x17 inch paper, viewer should hold this image approximately 21 inches from eye to replicate actual view.

TURBINE DIMENSIONS



OCEAN WIND



Ocean Wind Alternatives Analysis
 V14. Playground Pier
 Atlantic City, Atlantic County

LANDSCAPE INFORMATION

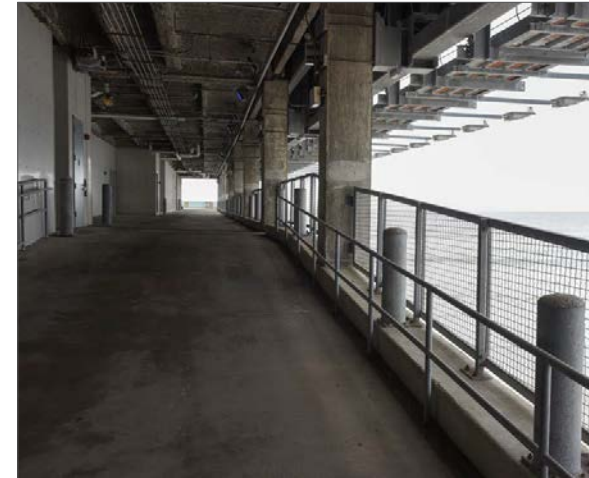
Field Identification Number. 200
Context Image Dates. 19 September 2018
Site Map Aerial Date. 26 August 2016
Physiographic Area. Shoreline
Landscape Similarity Zone (LSZ). Boardwalk

Scenic Resources. Visualization near Atlantic City Convention Hall (NHL); Shelburne Hotel (listed on NRHP); Atlantic City Boardwalk Historic District (identified historic property - no official NRHP eligibility determination).

SITE MAP



CONTEXT IMAGES



1. View looking southeast from the west side of Playground Pier toward the end of the pier.



2. View looking northeast from visualization location at end of Playground Pier toward Central Pier and Steel Pier.



3. View looking west from end of Playground Pier toward Atlantic City. The Atlantic City Convention Hall (NHL) is visible on the right side of the image.

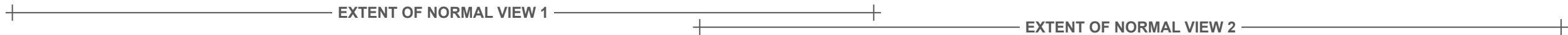


4. View looking northeast from end of playground pier toward Central Pier and Steel Pier.



5. View looking west from visualization location at end of Playground Pier toward Atlantic City shoreline.

PANORAMIC VISUALIZATION



CONTEXT MAP

OCEAN WIND ORIGINAL LAYOUT

10 MILES

ALTERNATIVES ANALYSIS

Original Layout: Turbine layout submitted in COP.

Turbine Dimensions: 906 ft blade tip height, 512 ft hub height, 788 ft rotor diameter.

TURBINE DIMENSIONS

BLADE TIP HEIGHT
906 ft (276 m)

HUB HEIGHT
512 ft (156 m)

ROTOR DIAMETER
788 ft (240 m)

Indicative Turbines

IMAGE DATA

LOCATION

| | |
|-------------------|-------------------|
| Date | 19 September 2018 |
| Time | 12:28 PM |
| Latitude | 39.352591° |
| Longitude | -74.433571° |
| Direction of View | Southeast |
| LSZ | Boardwalk |

ENVIRONMENTAL

| | |
|--------------------|---------------|
| Temperature (°F) | 79° |
| Humidity | 77% |
| Visibility | 10 mi |
| Wind Direction | N |
| Wind Speed | 7 mph |
| Weather Conditions | Broken clouds |

PHOTO

| | |
|----------------------|------------|
| Field ID | 200 |
| Camera | NIKON D750 |
| Resolution | 300 dpi |
| Focal Length | 50mm |
| Viewer Eye Elevation | 24' |

PROJECT VIEW

| | |
|---|-------------|
| Distance to Project | 15.21 miles |
| Project Horizontal Field of View (HFOV) | 41° |

PROJECT INFRASTRUCTURE

| | |
|--------------------------------|----|
| Number of Turbines | 99 |
| Number of offshore Substations | 3 |

V14

Playground Pier

Atlantic City, Atlantic County

OCEAN WIND

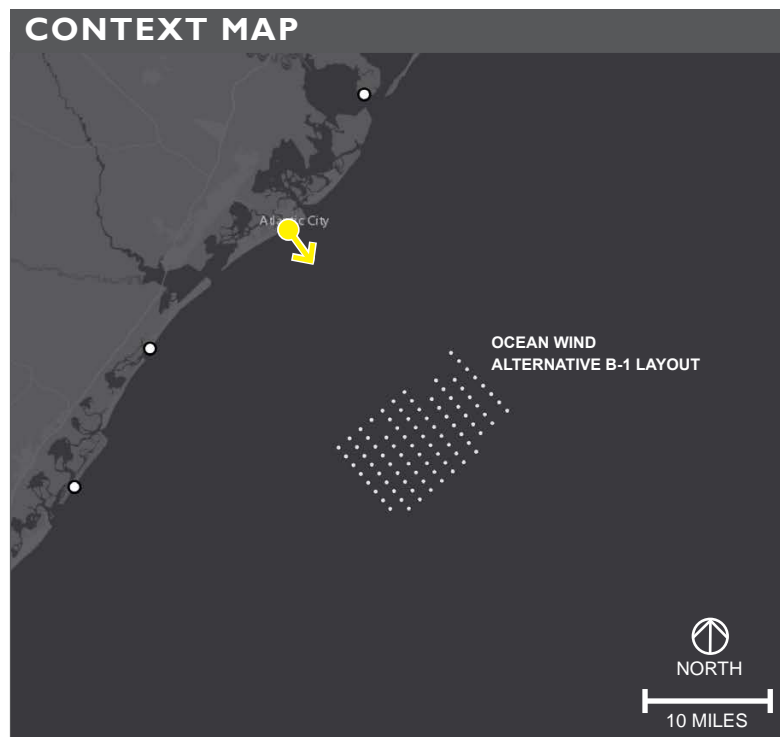
tjd&a | Landscape Architects & Planners

1 December 2021 Page 2/15

PANORAMIC VISUALIZATION



EXTENT OF NORMAL VIEW 1 | EXTENT OF NORMAL VIEW 2



ALTERNATIVES ANALYSIS

Alternative B-1: Exclusion of up to nine turbine positions in the first two shoreward strings of turbines that includes F01 to K01 and B02 to D02.

Turbine dimensions: 853 ft blade tip height, 492 ft hub height, 722 ft rotor diameter.

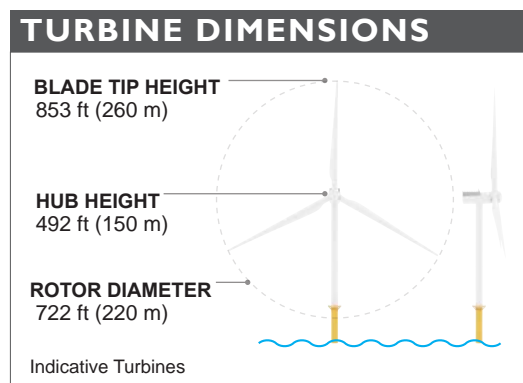


IMAGE DATA

LOCATION

| | |
|-------------------|-------------------|
| Date | 19 September 2018 |
| Time | 12:28 PM |
| Latitude | 39.352591° |
| Longitude | -74.433571° |
| Direction of View | Southeast |
| LSZ | Boardwalk |

ENVIRONMENTAL

| | |
|--------------------|---------------|
| Temperature (°F) | 79° |
| Humidity | 77% |
| Visibility | 10 mi |
| Wind Direction | N |
| Wind Speed | 7 mph |
| Weather Conditions | Broken clouds |

PHOTO

| | |
|----------------------|------------|
| Field ID | 200 |
| Camera | NIKON D750 |
| Resolution | 300 dpi |
| Focal Length | 50mm |
| Viewer Eye Elevation | 24' |

PROJECT VIEW

| | |
|---|-------------|
| Distance to Project | 15.97 miles |
| Project Horizontal Field of View (HFOV) | 40° |

PROJECT INFRASTRUCTURE

| | |
|--------------------------------|----|
| Number of Turbines | 89 |
| Number of offshore Substations | 3 |

V14

Playground Pier

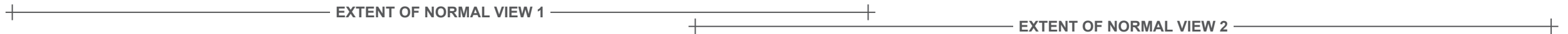
Atlantic City, Atlantic County

OCEAN WIND

tjd&a | Landscape Architects & Planners

1 December 2021 | Page 3/15

PANORAMIC VISUALIZATION



CONTEXT MAP

OCEAN WIND
ALTERNATIVE C-1 LAYOUT

ALTERNATIVES ANALYSIS

Alternative C-1: Exclusion of eight turbine positions (A02 to A09), relocation of eight turbine positions to the northern portion of the Ocean Wind Lease Area (C00 to F00 and B01 to E01).

Turbine Dimensions: 906 ft blade tip height, 512 ft hub height, 788 ft rotor diameter.

TURBINE DIMENSIONS

BLADE TIP HEIGHT
906 ft (276 m)

HUB HEIGHT
512 ft (156 m)

ROTOR DIAMETER
788 ft (240 m)

Indicative Turbines

IMAGE DATA

LOCATION

| | |
|-------------------|-------------------|
| Date | 19 September 2018 |
| Time | 12:28 PM |
| Latitude | 39.352591° |
| Longitude | -74.433571° |
| Direction of View | Southeast |
| LSZ | Boardwalk |

PHOTO

| | |
|----------------------|------------|
| Field ID | 200 |
| Camera | NIKON D750 |
| Resolution | 300 dpi |
| Focal Length | 50mm |
| Viewer Eye Elevation | 24' |

PROJECT INFRASTRUCTURE

| | |
|--------------------------------|----|
| Number of Turbines | 98 |
| Number of offshore Substations | 3 |

ENVIRONMENTAL

| | |
|--------------------|---------------|
| Temperature (°F) | 79° |
| Humidity | 77% |
| Visibility | 10 mi |
| Wind Direction | N |
| Wind Speed | 7 mph |
| Weather Conditions | Broken clouds |

PROJECT VIEW

| | |
|---|-------------|
| Distance to Project | 14.07 miles |
| Project Horizontal Field of View (HFOV) | 35° |

V14

Playground Pier

Atlantic City, Atlantic County

OCEAN WIND

tjd&a | Landscape Architects & Planners

1 December 2021 Page 5/15



**NORMAL VIEW |
EXISTING IMAGE**

V14

Playground Pier

**Atlantic City,
Atlantic County**

VIEW NOTE

When printed on 11x17 inch paper, viewer should hold this image approximately 21 inches from eye to replicate actual view.

OCEAN WIND

tjd&a



**NORMAL VIEW |
VISUALIZATION**

V14

Playground Pier

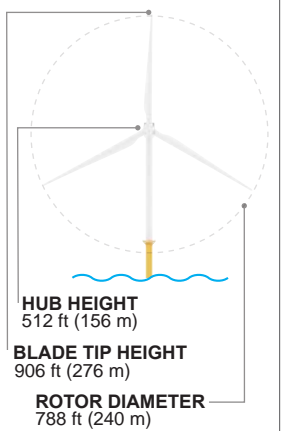
**Atlantic City,
Atlantic County**

**ORIGINAL
VISUALIZATION**

VIEW NOTE

When printed on 11x17 inch paper, viewer should hold this image approximately 21 inches from eye to replicate actual view.

TURBINE DIMENSIONS



OCEAN WIND

tjd&a



**NORMAL VIEW I
VISUALIZATION**

V14

Playground Pier

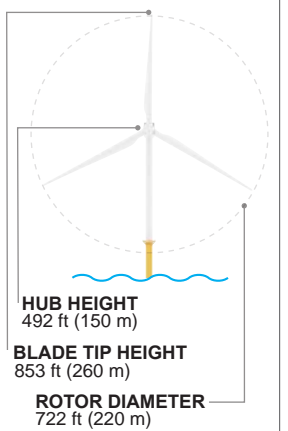
**Atlantic City,
Atlantic County**

**ALTERNATIVE B-1
VISUALIZATION**

VIEW NOTE

When printed on 11x17 inch paper, viewer should hold this image approximately 21 inches from eye to replicate actual view.

TURBINE DIMENSIONS



OCEAN WIND

tjd&a



**NORMAL VIEW I
VISUALIZATION**

V14

Playground Pier

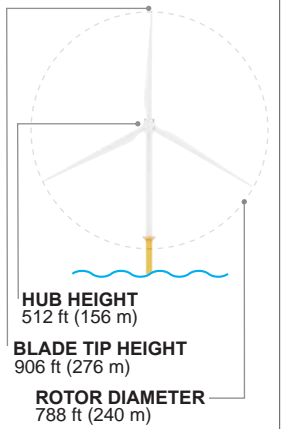
**Atlantic City,
Atlantic County**

**ALTERNATIVE B-2
VISUALIZATION**

VIEW NOTE

When printed on 11x17 inch paper, viewer should hold this image approximately 21 inches from eye to replicate actual view.

TURBINE DIMENSIONS



OCEAN WIND

tjd&a



**NORMAL VIEW 1
VISUALIZATION**

V14

Playground Pier

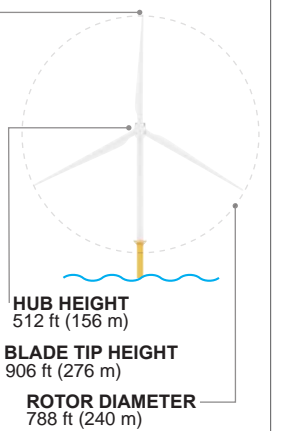
**Atlantic City,
Atlantic County**

**ALTERNATIVE C-1
VISUALIZATION**

VIEW NOTE

When printed on 11x17 inch paper, viewer should hold this image approximately 21 inches from eye to replicate actual view.

TURBINE DIMENSIONS



OCEAN WIND

tjd&a



**NORMAL VIEW 2
EXISTING IMAGE**

V14

Playground Pier

**Atlantic City,
Atlantic County**

VIEW NOTE

When printed on 11x17 inch paper, viewer should hold this image approximately 21 inches from eye to replicate actual view.

OCEAN WIND

tjd&a



**NORMAL VIEW 2
VISUALIZATION**

V14

Playground Pier

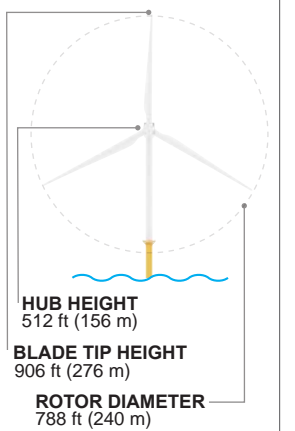
**Atlantic City,
Atlantic County**

**ORIGINAL
VISUALIZATION**

VIEW NOTE

When printed on 11x17 inch paper, viewer should hold this image approximately 21 inches from eye to replicate actual view.

TURBINE DIMENSIONS



OCEAN WIND

tjd&a



**NORMAL VIEW 2
VISUALIZATION**

V14

Playground Pier

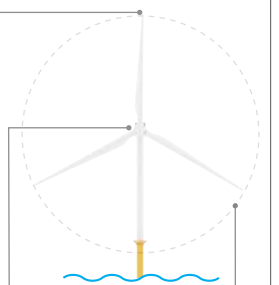
**Atlantic City,
Atlantic County**

**ALTERNATIVE B-1
VISUALIZATION**

VIEW NOTE

When printed on 11x17 inch paper, viewer should hold this image approximately 21 inches from eye to replicate actual view.

TURBINE DIMENSIONS



HUB HEIGHT
492 ft (150 m)

BLADE TIP HEIGHT
853 ft (260 m)

ROTOR DIAMETER
722 ft (220 m)

OCEAN WIND

tjd&a



**NORMAL VIEW 2
VISUALIZATION**

V14

Playground Pier

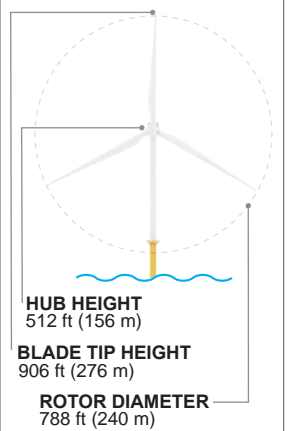
**Atlantic City,
Atlantic County**

**ALTERNATIVE B-2
VISUALIZATION**

VIEW NOTE

When printed on 11x17 inch paper, viewer should hold this image approximately 21 inches from eye to replicate actual view.

TURBINE DIMENSIONS



OCEAN WIND

tjd&a



**NORMAL VIEW 2
VISUALIZATION**

V14

Playground Pier

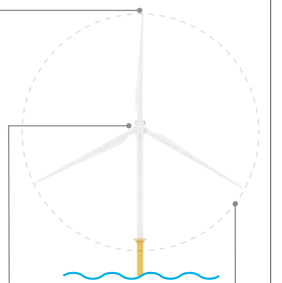
**Atlantic City,
Atlantic County**

**ALTERNATIVE C-1
VISUALIZATION**

VIEW NOTE

When printed on 11x17 inch paper, viewer should hold this image approximately 21 inches from eye to replicate actual view.

TURBINE DIMENSIONS



HUB HEIGHT
512 ft (156 m)

BLADE TIP HEIGHT
906 ft (276 m)

ROTOR DIAMETER
788 ft (240 m)

OCEAN WIND

tjd&a

LANDSCAPE INFORMATION

Field Identification Number. 140

Context Image Dates. 15 August 2018

Site Map Aerial Date. 26 July 2018

Physiographic Area. Shoreline

Landscape Similarity Zone (LSZ). Beachfront

Scenic Resources. Viewpoint from Corson's Inlet State Park, near Cape May Coastal Wetlands Wildlife Management Area.

SITE MAP



CONTEXT IMAGES



1. View looking northeast from Rush Chatten Bridge toward Corson's Inlet State Park.



2. View looking northeast from beachfront north of state park.



3. View looking southeast from end of trail connecting state park parking lot to beachfront.



4. View looking southwest from beach in state park toward Strathmere.



5. View looking northeast from state park beach toward Ocean City.



6. View looking southwest from west side of state park toward Corson's Inlet Bridge and Strathmere Bay.

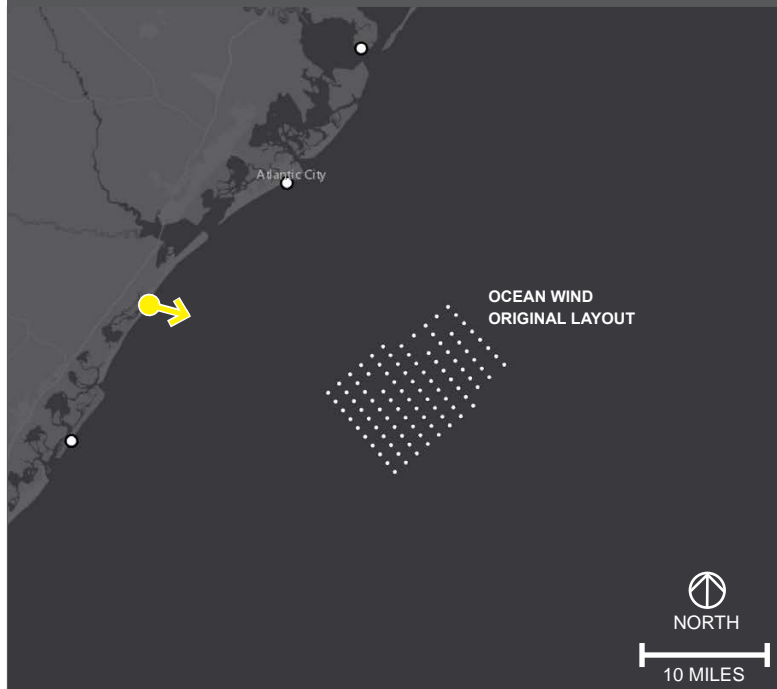
PANORAMIC VISUALIZATION



EXTENT OF NORMAL VIEW 1

EXTENT OF NORMAL VIEW 2

CONTEXT MAP



ALTERNATIVES ANALYSIS

Original Layout: Turbine layout submitted in COP.

Turbine Dimensions: 906 ft blade tip height, 512 ft hub height, 788 ft rotor diameter.

TURBINE DIMENSIONS

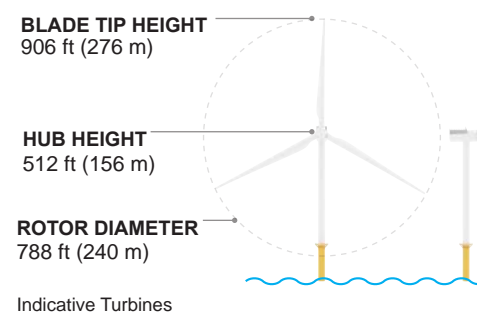


IMAGE DATA

LOCATION

| | |
|-------------------|----------------|
| Date | 15 August 2018 |
| Time | 4:55 PM |
| Latitude | 39.213474° |
| Longitude | -74.642627° |
| Direction of View | Southeast |
| LSZ | Beachfront |

ENVIRONMENTAL

| | |
|--------------------|--------|
| Temperature (°F) | 90° |
| Humidity | 45% |
| Visibility | 10 mi |
| Wind Direction | W |
| Wind Speed | 12 mph |
| Weather Conditions | Sunny |

PHOTO

| | |
|----------------------|------------|
| Field ID | 140 |
| Camera | NIKON D750 |
| Resolution | 300 dpi |
| Focal Length | 50mm |
| Viewer Eye Elevation | 15' |

PROJECT VIEW

| | |
|---|-------------|
| Distance to Project | 16.22 miles |
| Project Horizontal Field of View (HFOV) | 34° |

PROJECT INFRASTRUCTURE

| | |
|--------------------------------|----|
| Number of Turbines | 99 |
| Number of offshore Substations | 3 |

V19

Corson's Inlet State Park

Ocean City, Cape May County

OCEAN WIND

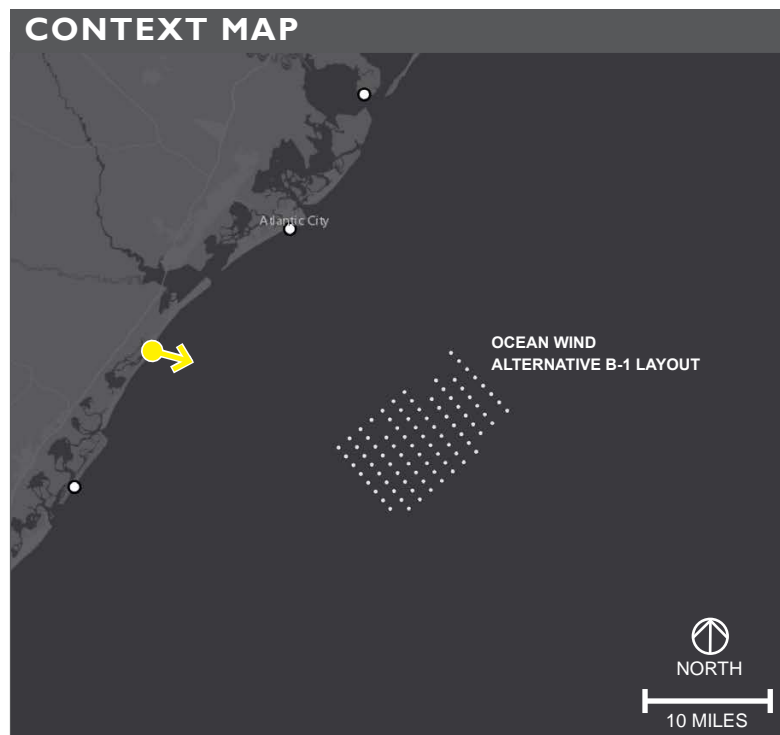
tjd&a | Landscape Architects & Planners

PANORAMIC VISUALIZATION



EXTENT OF NORMAL VIEW 1

EXTENT OF NORMAL VIEW 2



ALTERNATIVES ANALYSIS

Alternative B-1: Exclusion of up to nine turbine positions in the first two shoreward strings of turbines that includes F01 to K01 and B02 to D02.

Turbine dimensions: 853 ft blade tip height, 492 ft hub height, 722 ft rotor diameter.

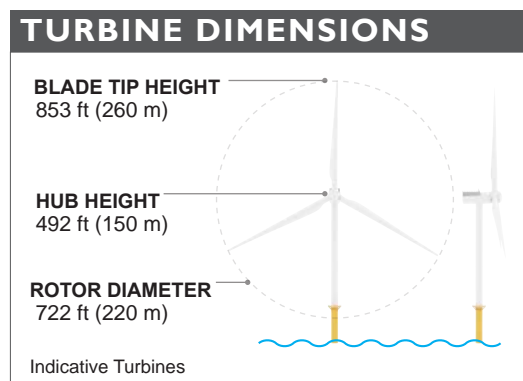


IMAGE DATA

| LOCATION | | ENVIRONMENTAL | |
|--------------------------------|----------------|---|-------------|
| Date | 15 August 2018 | Temperature (°F) | 90° |
| Time | 4:55 PM | Humidity | 45% |
| Latitude | 39.213474° | Visibility | 10 mi |
| Longitude | -74.642627° | Wind Direction | W |
| Direction of View | Southeast | Wind Speed | 12 mph |
| LSZ | Beachfront | Weather Conditions | Sunny |
| PHOTO | | PROJECT VIEW | |
| Field ID | 140 | Distance to Project | 17.07 miles |
| Camera | NIKON D750 | Project Horizontal Field of View (HFOV) | 33° |
| Resolution | 300 dpi | | |
| Focal Length | 50mm | | |
| Viewer Eye Elevation | 15' | | |
| PROJECT INFRASTRUCTURE | | | |
| Number of Turbines | 89 | | |
| Number of offshore Substations | 3 | | |

V19

Corson's Inlet State Park

Ocean City, Cape May County

OCEAN WIND

tjd&a | Landscape Architects & Planners

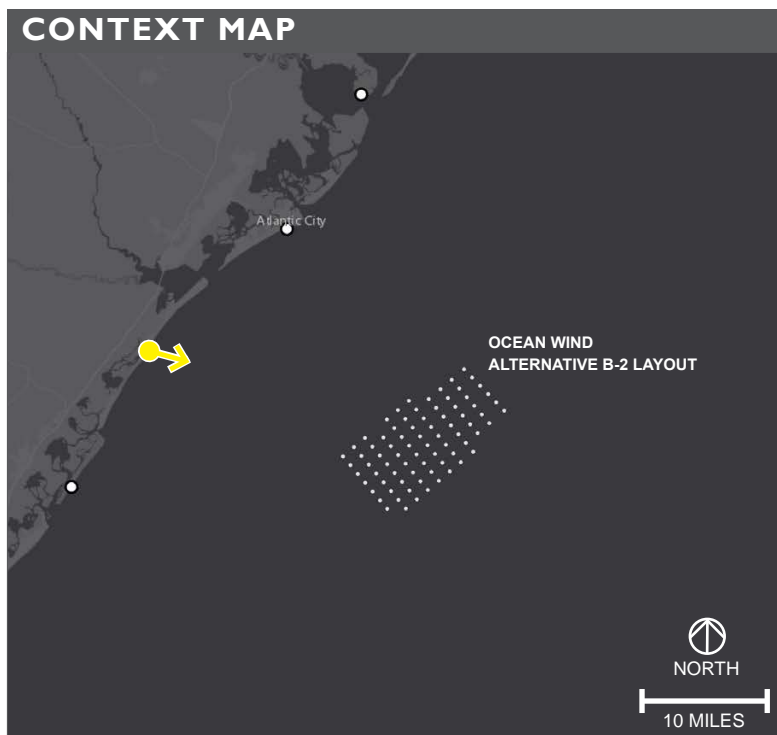
1 December 2021 Page 3/15

PANORAMIC VISUALIZATION



EXTENT OF NORMAL VIEW 1

EXTENT OF NORMAL VIEW 2



ALTERNATIVES ANALYSIS

Alternative B-2: Exclusion of up to 19 turbine positions in the first three shoreward strings of turbines that includes F01 to K01, A02 to K02, A03 and C03.

Turbine Dimensions: 906 ft blade tip height, 512 ft hub height, 788 ft rotor diameter.

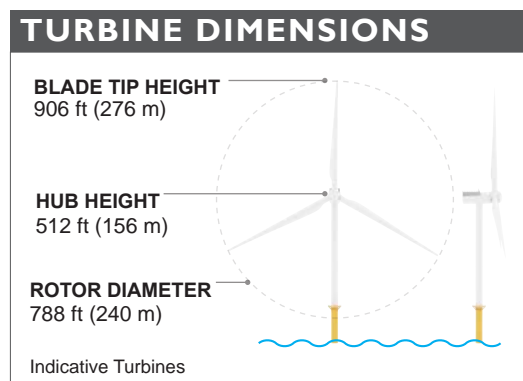


IMAGE DATA

| LOCATION | | ENVIRONMENTAL | |
|--------------------------------|----------------|---|-------------|
| Date | 15 August 2018 | Temperature (°F) | 90° |
| Time | 4:55 PM | Humidity | 45% |
| Latitude | 39.213474° | Visibility | 10 mi |
| Longitude | -74.642627° | Wind Direction | W |
| Direction of View | Southeast | Wind Speed | 12 mph |
| LSZ | Beachfront | Weather Conditions | Sunny |
| PHOTO | | PROJECT VIEW | |
| Field ID | 140 | Distance to Project | 17.92 miles |
| Camera | NIKON D750 | Project Horizontal Field of View (HFOV) | 30° |
| Resolution | 300 dpi | | |
| Focal Length | 50mm | | |
| Viewer Eye Elevation | 15' | | |
| PROJECT INFRASTRUCTURE | | | |
| Number of Turbines | 79 | | |
| Number of offshore Substations | 3 | | |

V19

Corson's Inlet State Park

Ocean City, Cape May County

OCEAN WIND

tjd&a | Landscape Architects & Planners

1 December 2021 Page 4/15

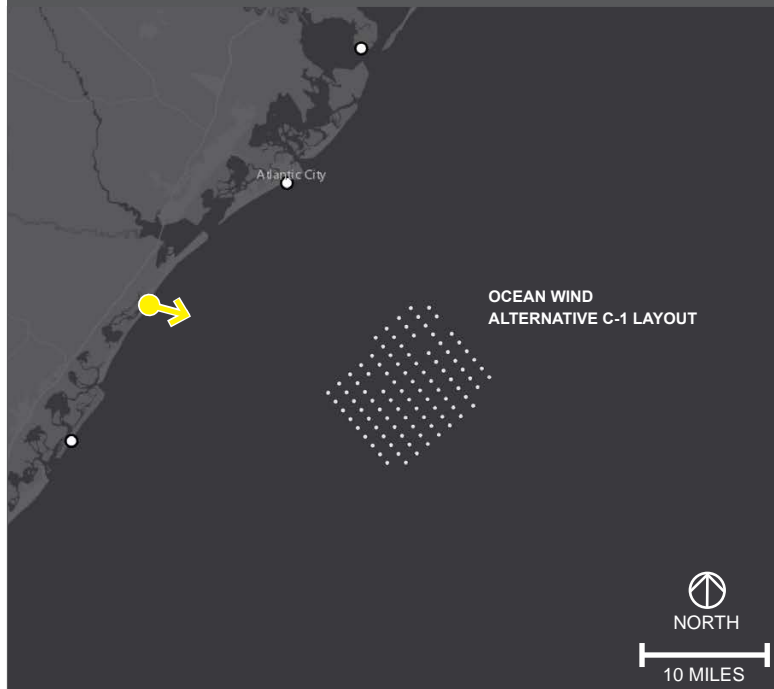
PANORAMIC VISUALIZATION



EXTENT OF NORMAL VIEW 1

EXTENT OF NORMAL VIEW 2

CONTEXT MAP



ALTERNATIVES ANALYSIS

Alternative C-1: Exclusion of eight turbine positions (A02 to A09), relocation of eight turbine positions to the northern portion of the Ocean Wind Lease Area (C00 to F00 and B01 to E01).

Turbine Dimensions: 906 ft blade tip height, 512 ft hub height, 788 ft rotor diameter.

TURBINE DIMENSIONS

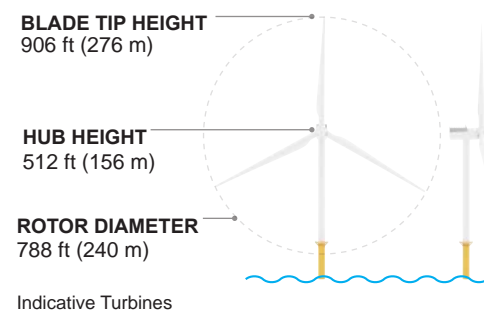


IMAGE DATA

LOCATION

| | |
|-------------------|----------------|
| Date | 15 August 2018 |
| Time | 4:55 PM |
| Latitude | 39.213474° |
| Longitude | -74.642627° |
| Direction of View | Southeast |
| LSZ | Beachfront |

ENVIRONMENTAL

| | |
|--------------------|--------|
| Temperature (°F) | 90° |
| Humidity | 45% |
| Visibility | 10 mi |
| Wind Direction | W |
| Wind Speed | 12 mph |
| Weather Conditions | Sunny |

PHOTO

| | |
|----------------------|------------|
| Field ID | 140 |
| Camera | NIKON D750 |
| Resolution | 300 dpi |
| Focal Length | 50mm |
| Viewer Eye Elevation | 15' |

PROJECT VIEW

| | |
|---|-------------|
| Distance to Project | 16.22 miles |
| Project Horizontal Field of View (HFOV) | 33° |

PROJECT INFRASTRUCTURE

| | |
|--------------------------------|----|
| Number of Turbines | 98 |
| Number of offshore Substations | 3 |

V19

Corson's Inlet State Park

Ocean City, Cape May County

OCEAN WIND

tjd&a | Landscape Architects & Planners

V19. Corson's Inlet State Park
Ocean City, Cape May County



**NORMAL VIEW |
EXISTING IMAGE**

V19

Corson's Inlet
State Park

**Ocean City,
Cape May County**

VIEW NOTE

When printed on 11x17 inch paper, viewer should hold this image approximately 21 inches from eye to replicate actual view.

OCEAN WIND

tjd&a

V19. Corson's Inlet State Park Ocean City, Cape May County

ORIGINAL LAYOUT VISUALIZATION



NORMAL VIEW | VISUALIZATION

V19

Corson's Inlet State Park

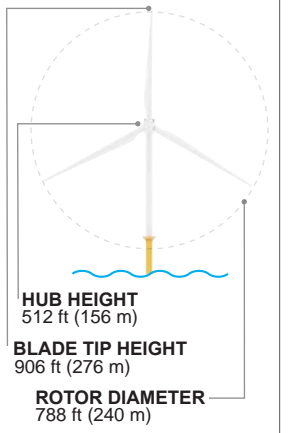
**Ocean City,
Cape May County**

**ORIGINAL
VISUALIZATION**

VIEW NOTE

When printed on 11x17 inch paper, viewer should hold this image approximately 21 inches from eye to replicate actual view.

TURBINE DIMENSIONS



OCEAN WIND





**NORMAL VIEW I
VISUALIZATION**

V19

Corson's Inlet
State Park

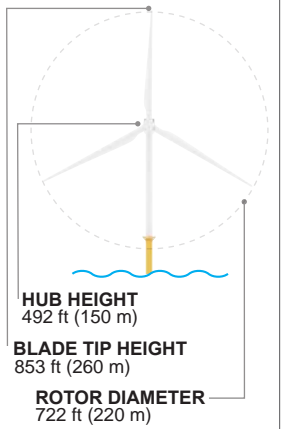
**Ocean City,
Cape May County**

**ALTERNATIVE B-1
VISUALIZATION**

VIEW NOTE

When printed on 11x17 inch paper, viewer should hold this image approximately 21 inches from eye to replicate actual view.

TURBINE DIMENSIONS



OCEAN WIND

tjd&a



**NORMAL VIEW I
VISUALIZATION**

V19

Corson's Inlet
State Park

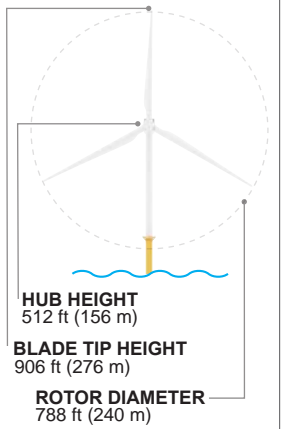
**Ocean City,
Cape May County**

**ALTERNATIVE B-2
VISUALIZATION**

VIEW NOTE

When printed on 11x17 inch paper, viewer should hold this image approximately 21 inches from eye to replicate actual view.

TURBINE DIMENSIONS



OCEAN WIND





**NORMAL VIEW I
VISUALIZATION**

V19

Corson's Inlet
State Park

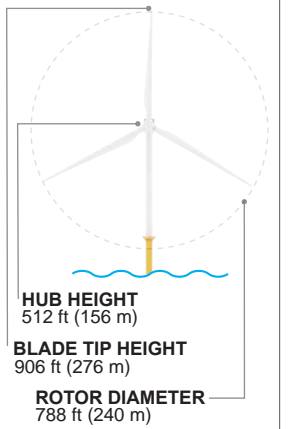
**Ocean City,
Cape May County**

**ALTERNATIVE C-1
VISUALIZATION**

VIEW NOTE

When printed on 11x17 inch paper, viewer should hold this image approximately 21 inches from eye to replicate actual view.

TURBINE DIMENSIONS



OCEAN WIND

tjd&a



**NORMAL VIEW 2
EXISTING IMAGE**

V19

Corson's Inlet
State Park

**Ocean City,
Cape May County**

VIEW NOTE

When printed on 11x17 inch paper, viewer should hold this image approximately 21 inches from eye to replicate actual view.

OCEAN WIND

tjd&a



**NORMAL VIEW 2
VISUALIZATION**

V19

Corson's Inlet
State Park

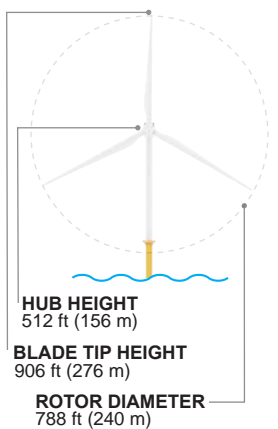
**Ocean City,
Cape May County**

**ORIGINAL
VISUALIZATION**

VIEW NOTE

When printed on 11x17 inch paper, viewer should hold this image approximately 21 inches from eye to replicate actual view.

TURBINE DIMENSIONS



OCEAN WIND

tjd&a



**NORMAL VIEW 2
VISUALIZATION**

V19

Corson's Inlet
State Park

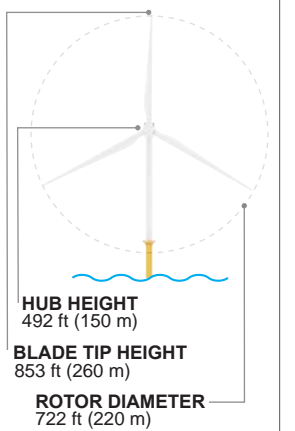
**Ocean City,
Cape May County**

**ALTERNATIVE B-1
VISUALIZATION**

VIEW NOTE

When printed on 11x17 inch paper, viewer should hold this image approximately 21 inches from eye to replicate actual view.

TURBINE DIMENSIONS



OCEAN WIND

tjd&a



**NORMAL VIEW 2
VISUALIZATION**

V19

Corson's Inlet
State Park

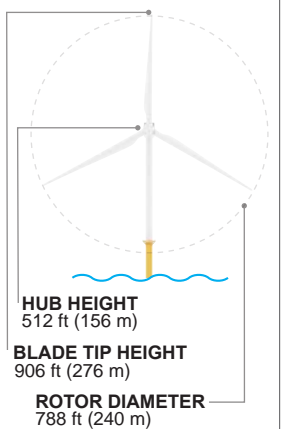
**Ocean City,
Cape May County**

**ALTERNATIVE B-2
VISUALIZATION**

VIEW NOTE

When printed on 11x17 inch paper, viewer should hold this image approximately 21 inches from eye to replicate actual view.

TURBINE DIMENSIONS



OCEAN WIND

tjd&a



**NORMAL VIEW 2
VISUALIZATION**

V19

Corson's Inlet
State Park

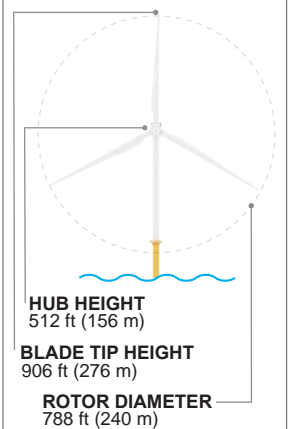
**Ocean City,
Cape May County**

**ALTERNATIVE C-1
VISUALIZATION**

VIEW NOTE

When printed on 11x17 inch paper, viewer should hold this image approximately 21 inches from eye to replicate actual view.

TURBINE DIMENSIONS



OCEAN WIND

tjd&a

LANDSCAPE INFORMATION

Field Identification Number. 59

Context Image Dates. 14 August 2018

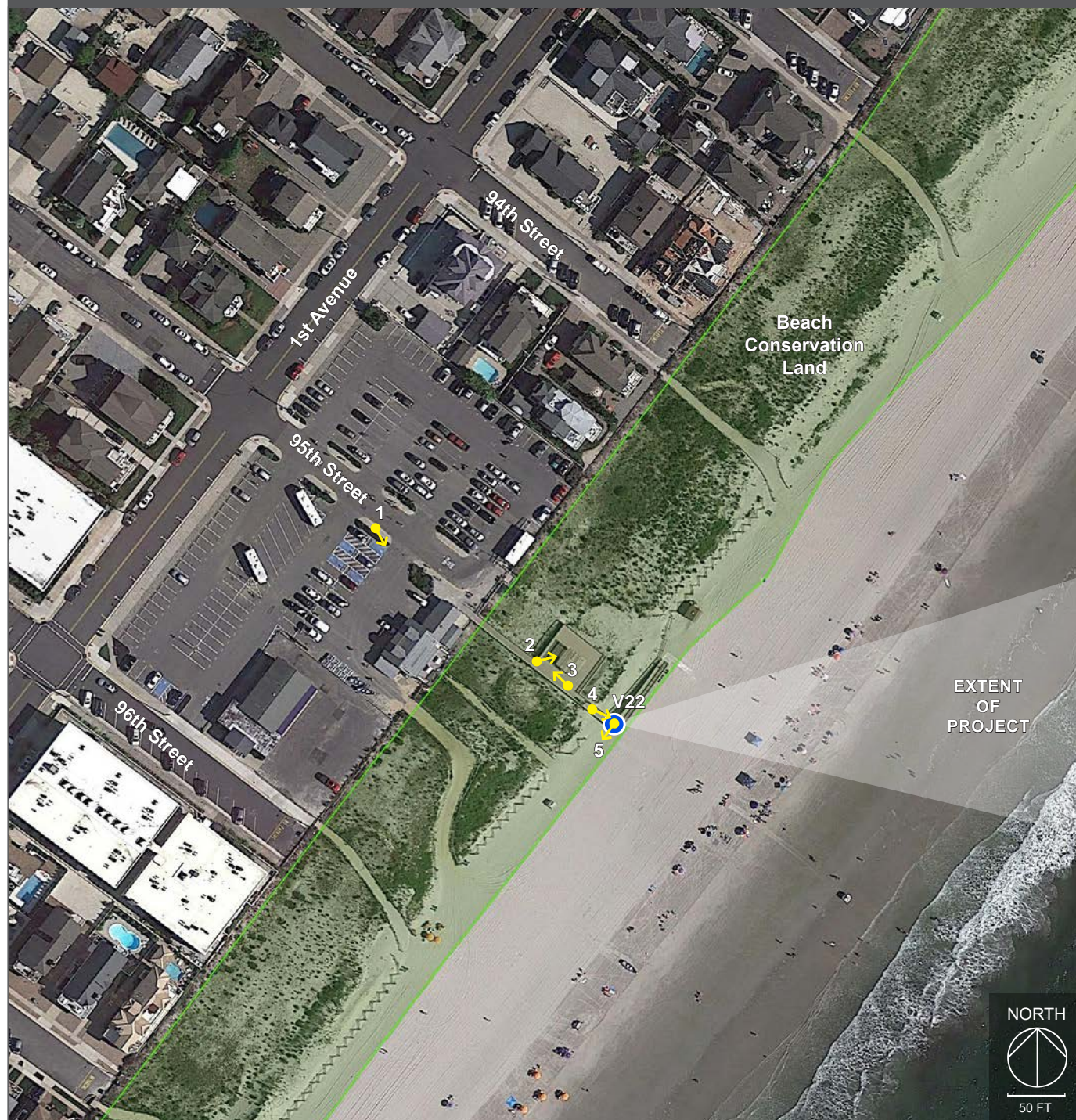
Site Map Aerial Date. 26 July 2018

Physiographic Area. Shoreline

Landscape Similarity Zone (LSZ). Beachfront

Scenic Resources. Viewpoint from a public beach conservation area. Viewpoint is near Stone Harbor Downtown Commercial Block (identified historic district - no official NRHP eligibility designation).

SITE MAP



CONTEXT IMAGES



1. View looking southeast from the end of 95th Street toward Stone Harbor Beach Patrol, and public beach access.



2. View looking east toward gazebo on 95th Street beach access dune viewing platform.



3. View looking northwest toward 95th Street from 95th Street beach access dune viewing platform.



4. View looking southeast from 95th Street beach access dune viewing platform.

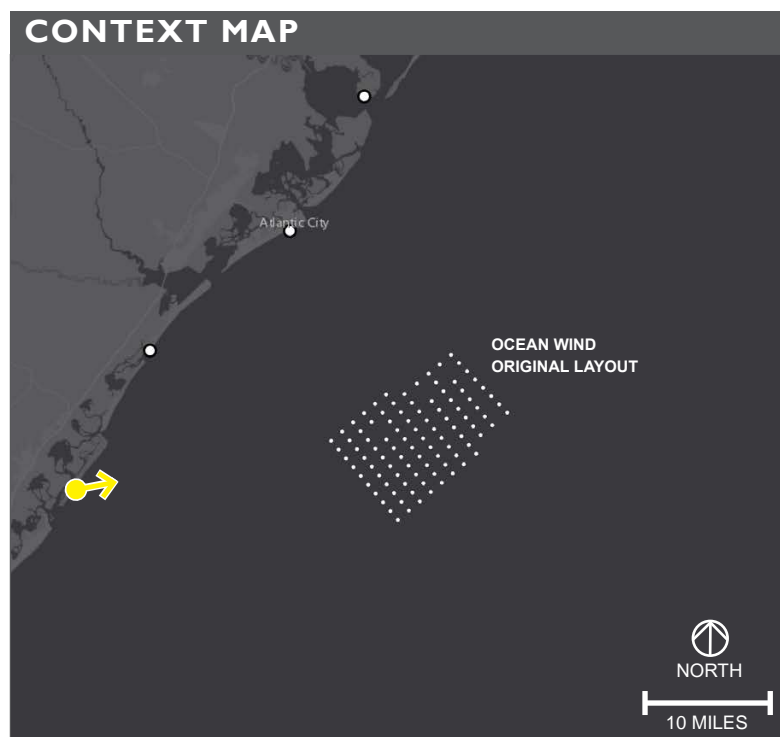


5. View looking southwest from visualization location on the 95th Street beach access ramp.

PANORAMIC VISUALIZATION



EXTENT OF NORMAL VIEW



ALTERNATIVES ANALYSIS

Original Layout: Turbine layout submitted in COP.

Turbine Dimensions: 906 ft blade tip height, 512 ft hub height, 788 ft rotor diameter.

TURBINE DIMENSIONS

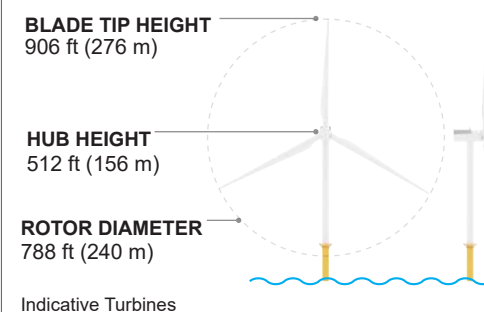


IMAGE DATA

| LOCATION | |
|-------------------|----------------|
| Date | 14 August 2018 |
| Time | 4:22 PM |
| Latitude | 39.052389° |
| Longitude | -74.754855° |
| Direction of View | East |
| LSZ | Beachfront |

| ENVIRONMENTAL | |
|--------------------|---------------|
| Temperature (°F) | 83° |
| Humidity | 63% |
| Visibility | 10 mi |
| Wind Direction | W |
| Wind Speed | 14 mph |
| Weather Conditions | Partly Cloudy |

| PHOTO | |
|----------------------|------------|
| Field ID | 59 |
| Camera | NIKON D750 |
| Resolution | 300 dpi |
| Focal Length | 50mm |
| Viewer Eye Elevation | 13' |

| PROJECT VIEW | |
|---|-------------|
| Distance to Project | 20.93 miles |
| Project Horizontal Field of View (HFOV) | 25° |

| PROJECT INFRASTRUCTURE | |
|--------------------------------|----|
| Number of Turbines | 99 |
| Number of offshore Substations | 3 |

V22

Stone Harbor Beach Access (Day)

Stone Harbor, Cape May County

OCEAN WIND

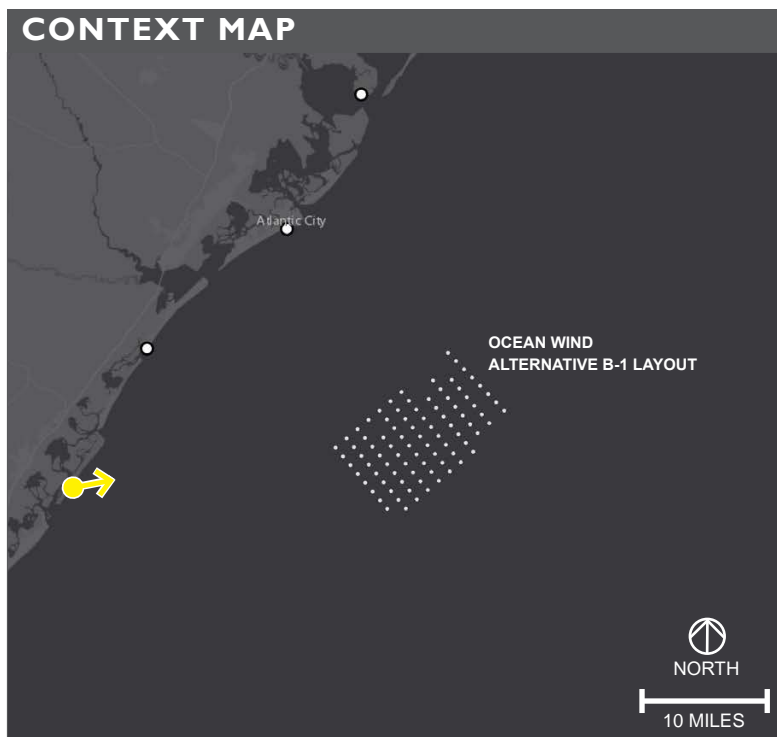
tjd&a | Landscape Architects & Planners

1 December 2021 Page 2/10

PANORAMIC VISUALIZATION



EXTENT OF NORMAL VIEW



ALTERNATIVES ANALYSIS

Alternative B-1: Exclusion of up to nine turbine positions in the first two shoreward strings of turbines that includes F01 to K01 and B02 to D02.

Turbine dimensions: 853 ft blade tip height, 492 ft hub height, 722 ft rotor diameter.

TURBINE DIMENSIONS

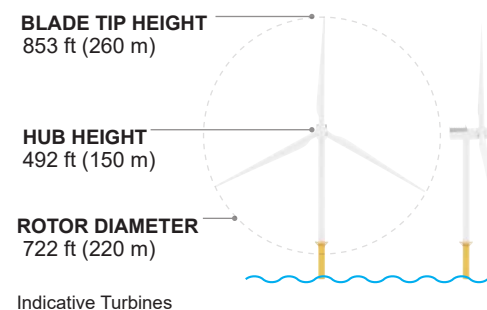


IMAGE DATA

LOCATION

| | |
|-------------------|----------------|
| Date | 14 August 2018 |
| Time | 4:22 PM |
| Latitude | 39.052389° |
| Longitude | -74.754855° |
| Direction of View | East |
| LSZ | Beachfront |

ENVIRONMENTAL

| | |
|--------------------|---------------|
| Temperature (°F) | 83° |
| Humidity | 63% |
| Visibility | 10 mi |
| Wind Direction | W |
| Wind Speed | 14 mph |
| Weather Conditions | Partly Cloudy |

PHOTO

| | |
|----------------------|------------|
| Field ID | 59 |
| Camera | NIKON D750 |
| Resolution | 300 dpi |
| Focal Length | 50mm |
| Viewer Eye Elevation | 13' |

PROJECT VIEW

| | |
|---|------------|
| Distance to Project | 21.4 miles |
| Project Horizontal Field of View (HFOV) | 24° |

PROJECT INFRASTRUCTURE

| | |
|--------------------------------|----|
| Number of Turbines | 89 |
| Number of offshore Substations | 3 |

V22

Stone Harbor Beach Access (Day)
Stone Harbor, Cape May County

OCEAN WIND

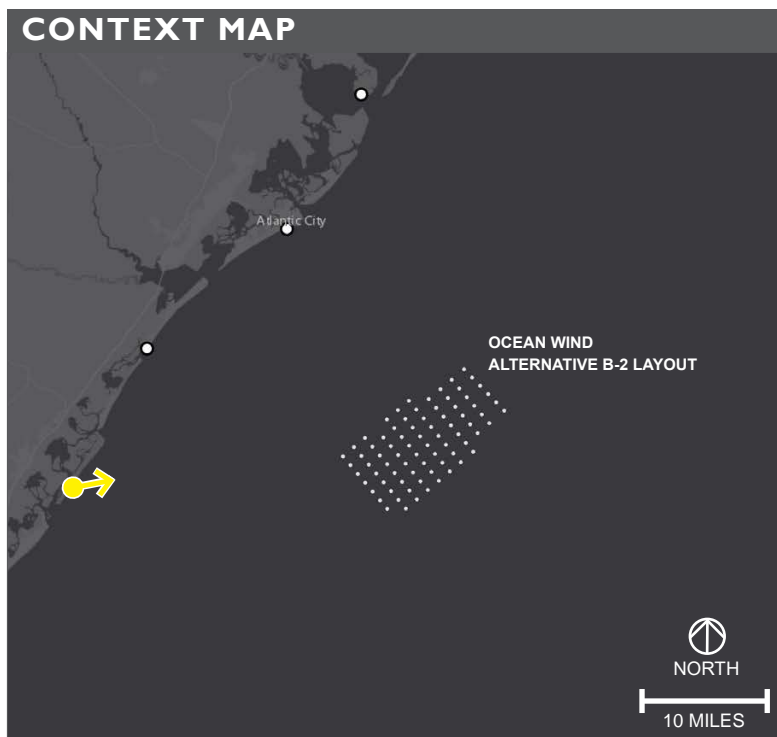
tjd&a | Landscape Architects & Planners

1 December 2021 Page 3/10

PANORAMIC VISUALIZATION



EXTENT OF NORMAL VIEW



ALTERNATIVES ANALYSIS

Alternative B-2: Exclusion of up to 19 turbine positions in the first three shoreward strings of turbines that includes F01 to K01, A02 to K02, A03 and C03.

Turbine Dimensions: 906 ft blade tip height, 512 ft hub height, 788 ft rotor diameter.

TURBINE DIMENSIONS

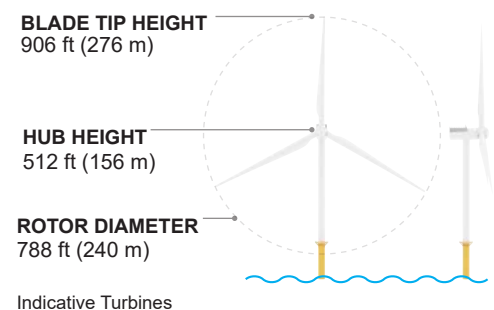


IMAGE DATA

LOCATION

| | |
|-------------------|----------------|
| Date | 14 August 2018 |
| Time | 4:22 PM |
| Latitude | 39.052389° |
| Longitude | -74.754855° |
| Direction of View | East |
| LSZ | Beachfront |

ENVIRONMENTAL

| | |
|--------------------|---------------|
| Temperature (°F) | 83° |
| Humidity | 63% |
| Visibility | 10 mi |
| Wind Direction | W |
| Wind Speed | 14 mph |
| Weather Conditions | Partly Cloudy |

PHOTO

| | |
|----------------------|------------|
| Field ID | 59 |
| Camera | NIKON D750 |
| Resolution | 300 dpi |
| Focal Length | 50mm |
| Viewer Eye Elevation | 13' |

PROJECT VIEW

| | |
|---|-------------|
| Distance to Project | 21.89 miles |
| Project Horizontal Field of View (HFOV) | 21° |

PROJECT INFRASTRUCTURE

| | |
|--------------------------------|----|
| Number of Turbines | 79 |
| Number of offshore Substations | 3 |

V22

Stone Harbor Beach Access (Day)
Stone Harbor, Cape May County

OCEAN WIND

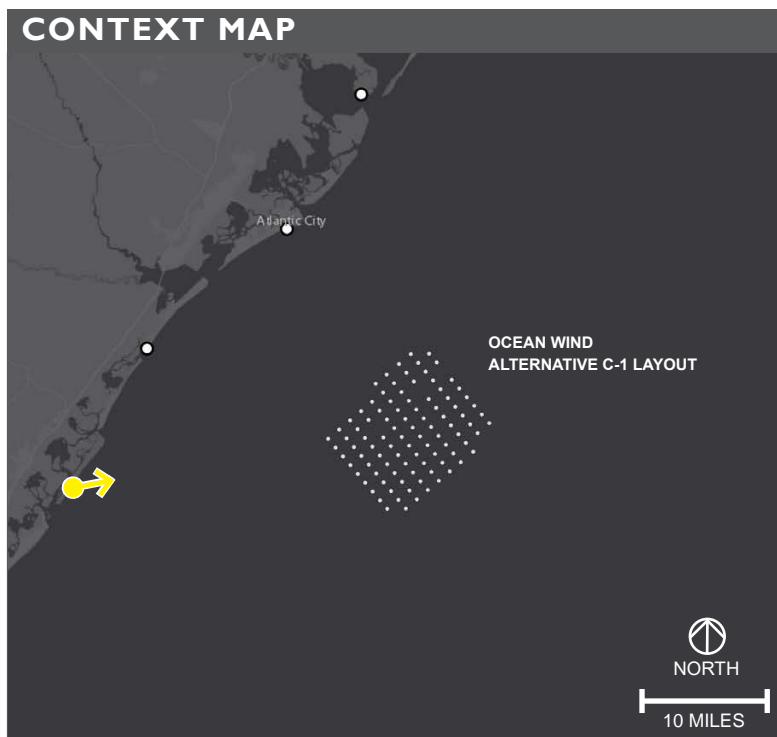
tjd&a | Landscape Architects & Planners

1 December 2021 Page 4/10

PANORAMIC VISUALIZATION



EXTENT OF NORMAL VIEW



ALTERNATIVES ANALYSIS

Alternative C-1: Exclusion of eight turbine positions (A02 to A09), relocation of eight turbine positions to the northern portion of the Ocean Wind Lease Area (C00 to F00 and B01 to E01).

Turbine Dimensions: 906 ft blade tip height, 512 ft hub height, 788 ft rotor diameter.

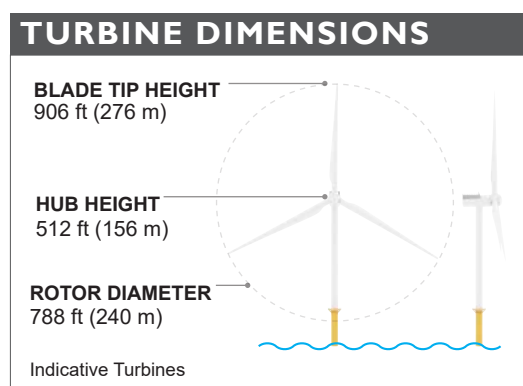


IMAGE DATA

| LOCATION | | ENVIRONMENTAL | |
|--------------------------------|----------------|---|---------------|
| Date | 14 August 2018 | Temperature (°F) | 83° |
| Time | 4:22 PM | Humidity | 63% |
| Latitude | 39.052389° | Visibility | 10 mi |
| Longitude | -74.754855° | Wind Direction | W |
| Direction of View | East | Wind Speed | 14 mph |
| LSZ | Beachfront | Weather Conditions | Partly Cloudy |
| PHOTO | | PROJECT VIEW | |
| Field ID | 59 | Distance to Project | 20.93 miles |
| Camera | NIKON D750 | Project Horizontal Field of View (HFOV) | 25° |
| Resolution | 300 dpi | | |
| Focal Length | 50mm | | |
| Viewer Eye Elevation | 13' | | |
| PROJECT INFRASTRUCTURE | | | |
| Number of Turbines | 98 | | |
| Number of offshore Substations | 3 | | |

V22

Stone Harbor Beach Access (Day)
Stone Harbor, Cape May County

OCEAN WIND

tjd&a | Landscape Architects & Planners

1 December 2021 Page 5/10



**NORMAL VIEW
EXISTING IMAGE**

V22

Stone Harbor
Beach Access
(Day)

**Stone Harbor,
Cape May County**

VIEW NOTE

When printed on 11x17 inch paper, viewer should hold this image approximately 21 inches from eye to replicate actual view.

OCEAN WIND

tjd&a

V22. Stone Harbor Beach Access (Day)

Stone Harbor, Cape May County

ORIGINAL LAYOUT VISUALIZATION



NORMAL VIEW VISUALIZATION

V22

Stone Harbor Beach Access (Day)

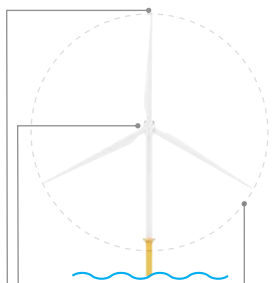
Stone Harbor, Cape May County

ORIGINAL VISUALIZATION

VIEW NOTE

When printed on 11x17 inch paper, viewer should hold this image approximately 21 inches from eye to replicate actual view.

TURBINE DIMENSIONS



HUB HEIGHT
512 ft (156 m)

BLADE TIP HEIGHT
906 ft (276 m)

ROTOR DIAMETER
788 ft (240 m)

OCEAN WIND



V22. Stone Harbor Beach Access (Day)

Stone Harbor, Cape May County

ALTERNATIVE B-1 VISUALIZATION



NORMAL VIEW VISUALIZATION

V22

Stone Harbor Beach Access (Day)

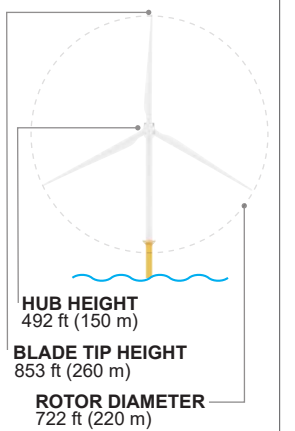
Stone Harbor, Cape May County

ALTERNATIVE B-1 VISUALIZATION

VIEW NOTE

When printed on 11x17 inch paper, viewer should hold this image approximately 21 inches from eye to replicate actual view.

TURBINE DIMENSIONS



OCEAN WIND

tjd&a

V22. Stone Harbor Beach Access (Day)

Stone Harbor, Cape May County

ALTERNATIVE B-2 VISUALIZATION



NORMAL VIEW VISUALIZATION

V22

Stone Harbor Beach Access (Day)

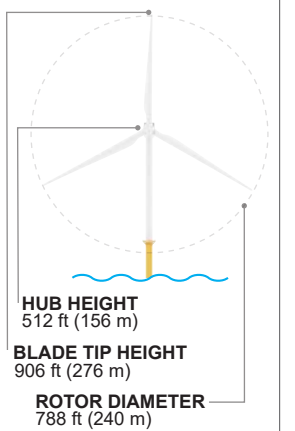
Stone Harbor, Cape May County

ALTERNATIVE B-2 VISUALIZATION

VIEW NOTE

When printed on 11x17 inch paper, viewer should hold this image approximately 21 inches from eye to replicate actual view.

TURBINE DIMENSIONS



OCEAN WIND



V22. Stone Harbor Beach Access (Day)

Stone Harbor, Cape May County

ALTERNATIVE C-1 VISUALIZATION



NORMAL VIEW VISUALIZATION

V22

Stone Harbor Beach Access (Day)

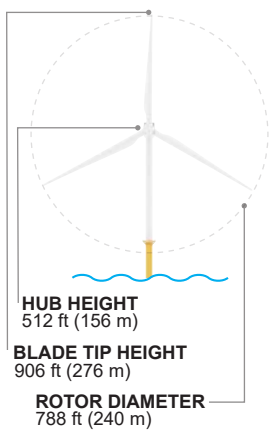
Stone Harbor, Cape May County

ALTERNATIVE C-1 VISUALIZATION

VIEW NOTE

When printed on 11x17 inch paper, viewer should hold this image approximately 21 inches from eye to replicate actual view.

TURBINE DIMENSIONS



OCEAN WIND

tjd&a