

Empire Wind Offshore Wind Project

# National Historic Preservation Act

## What is Section 106 of the National Historic Preservation Act?

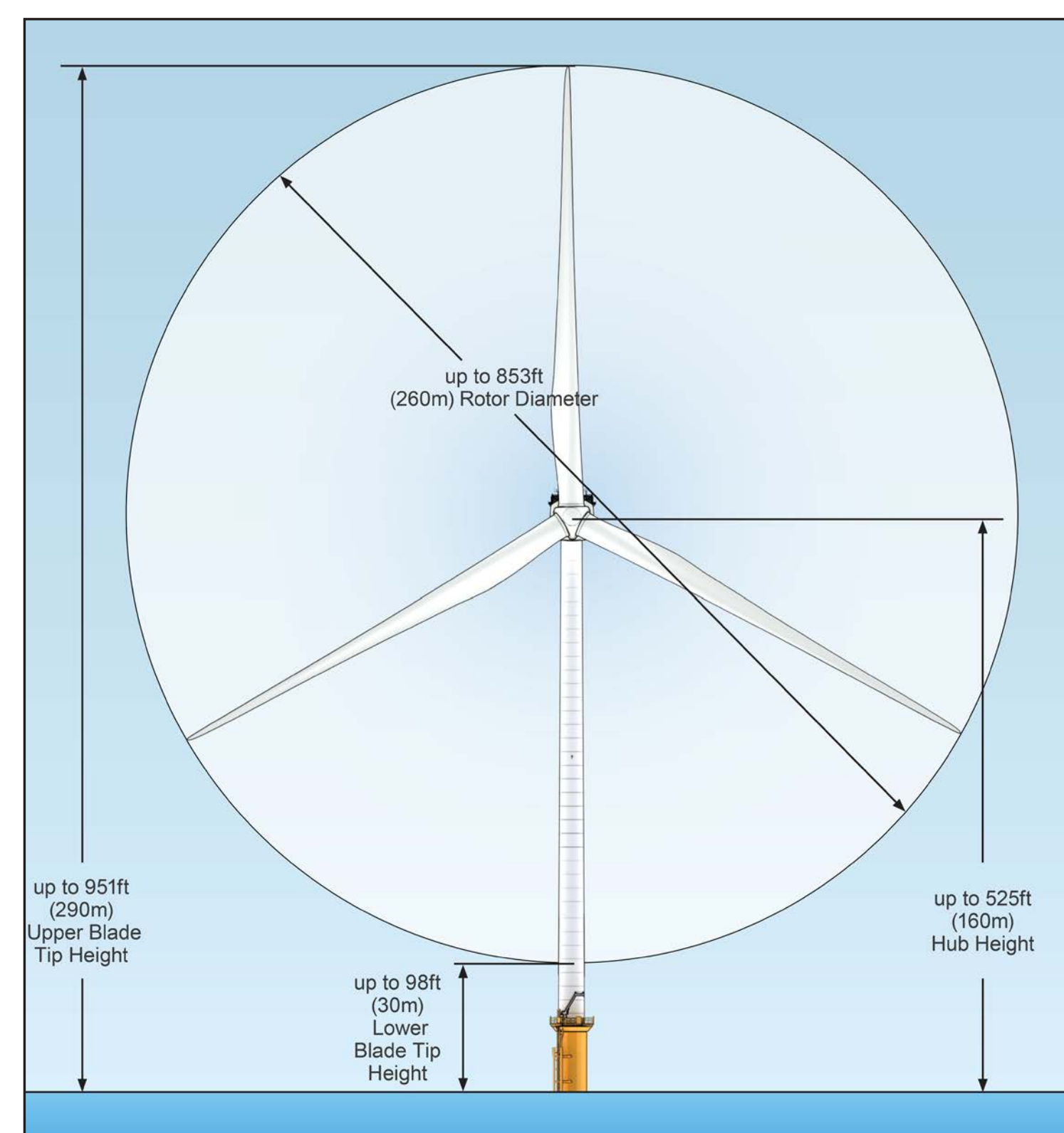
It is a regulation that requires Federal agencies to consider effects of undertakings on historic properties.

### What will it do?

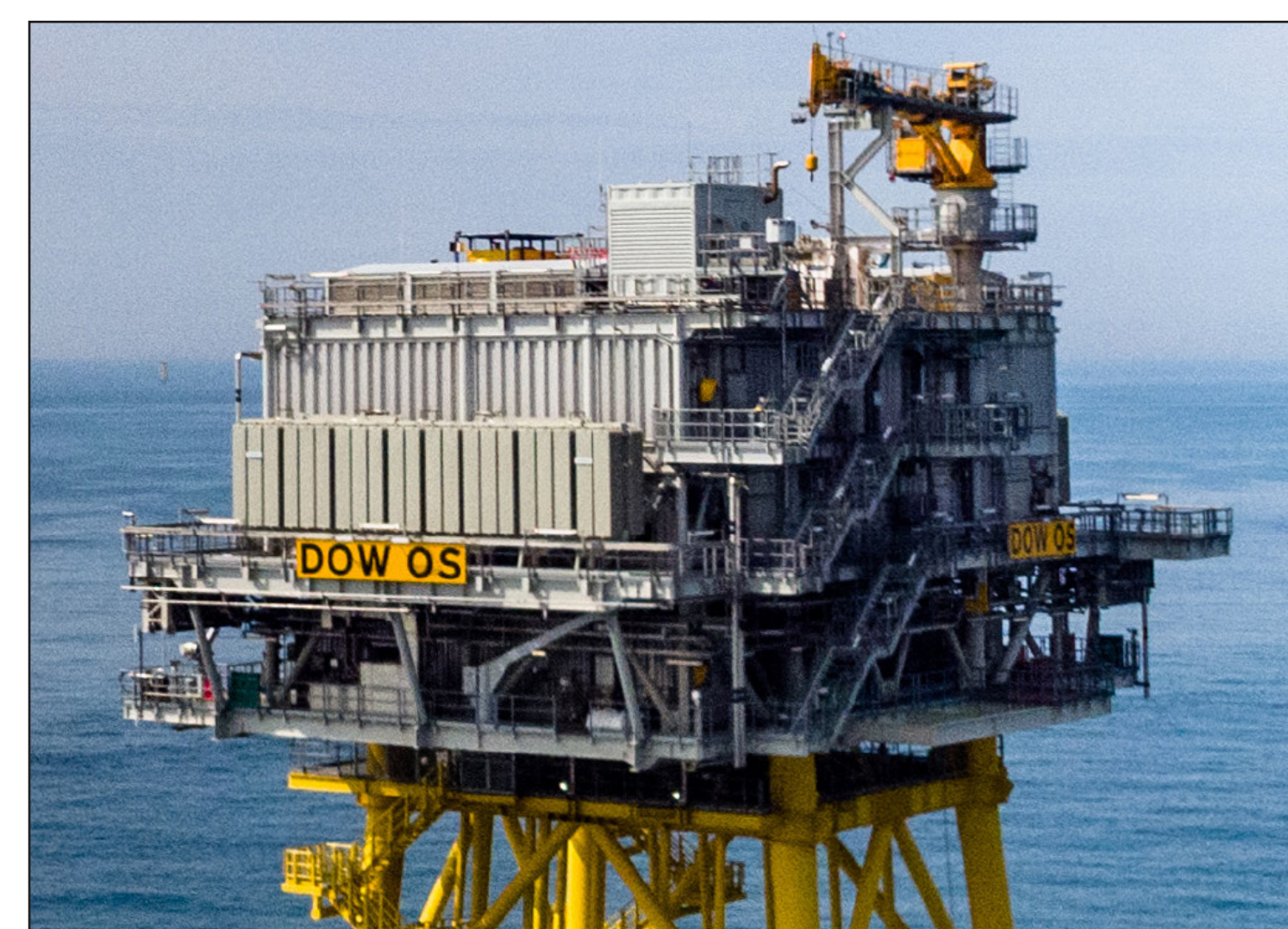
- Establish Area of Potential Effect (APE).
- Identify historic properties.
- Assess project effects on historic properties.
- Resolve adverse effects (avoid, minimize, or mitigate).

### BOEM requests your input regarding:

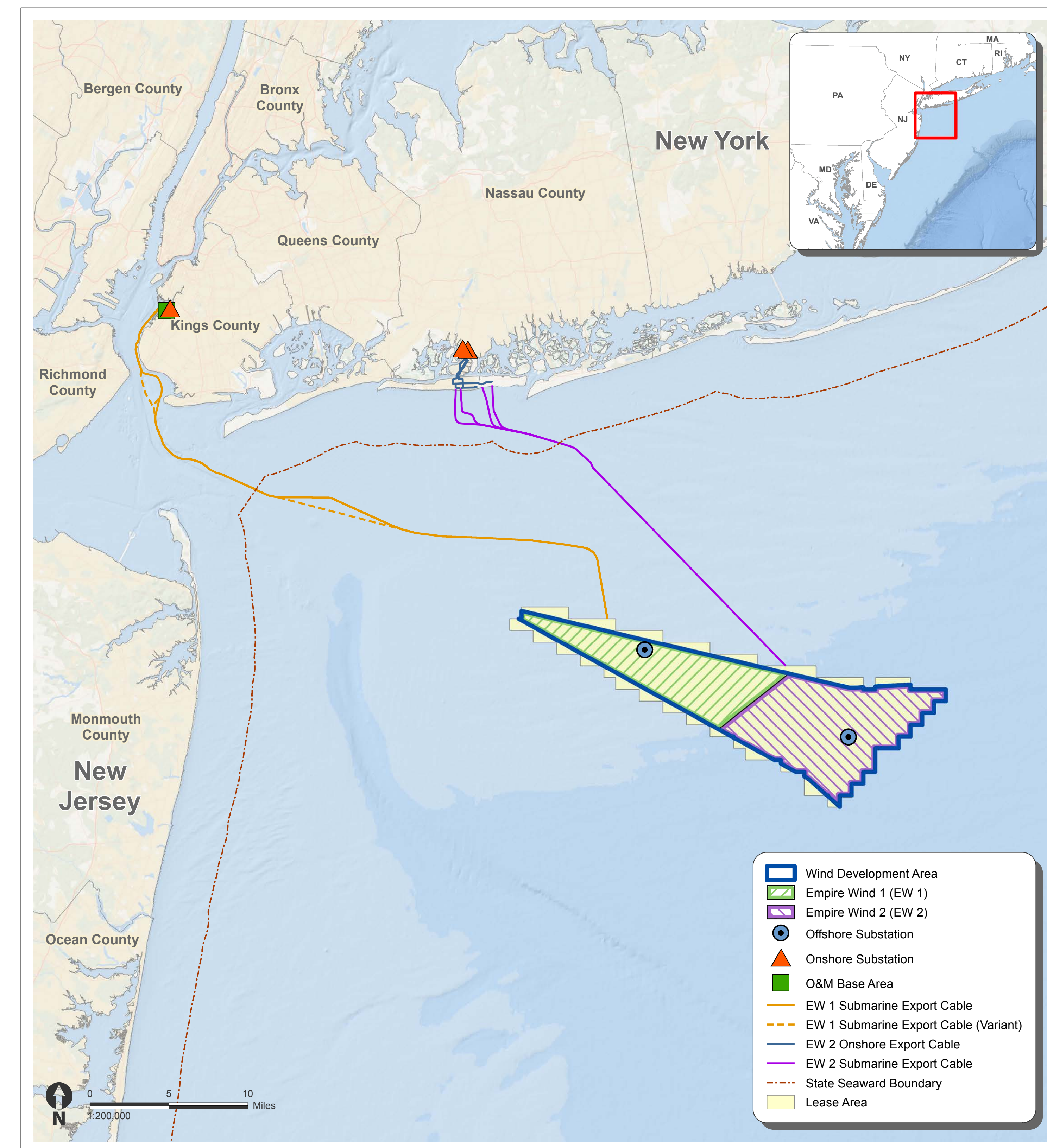
1. Reasonable alternatives for consideration in the Environmental Impact Statement (EIS).
2. Identification of historic properties and/or potential effects on historic properties from activities associated with the proposed project.
3. Potential measures to avoid, minimize, and/or mitigate impacts to environmental and cultural resources to be analyzed in the EIS.



Representative Wind Turbine



Indicative Image of an Offshore Substation



Project Location Map

# Area of Potential Effect and Identification of Historic Properties

## What is the Area of Potential Effect (APE)?

The APE is a geographic area or areas within which an undertaking may directly or indirectly cause alterations in the character or use of historic properties, if any such properties exist.

## Empire Wind has three categories of APE:

1. Terrestrial: the depth and breadth of terrestrial areas potentially impacted by any ground-disturbing activities.
2. Marine: the depth and breadth of the seabed potentially impacted by any bottom-disturbing activities.
3. Visual: the viewshed from which renewable energy structures, whether located offshore or onshore, would be visible.

## What is a historic property?

A historic property is a prehistoric or historic district, site, building structure, or object included in or eligible for inclusion in the National Register of Historic Places. Historic properties must:

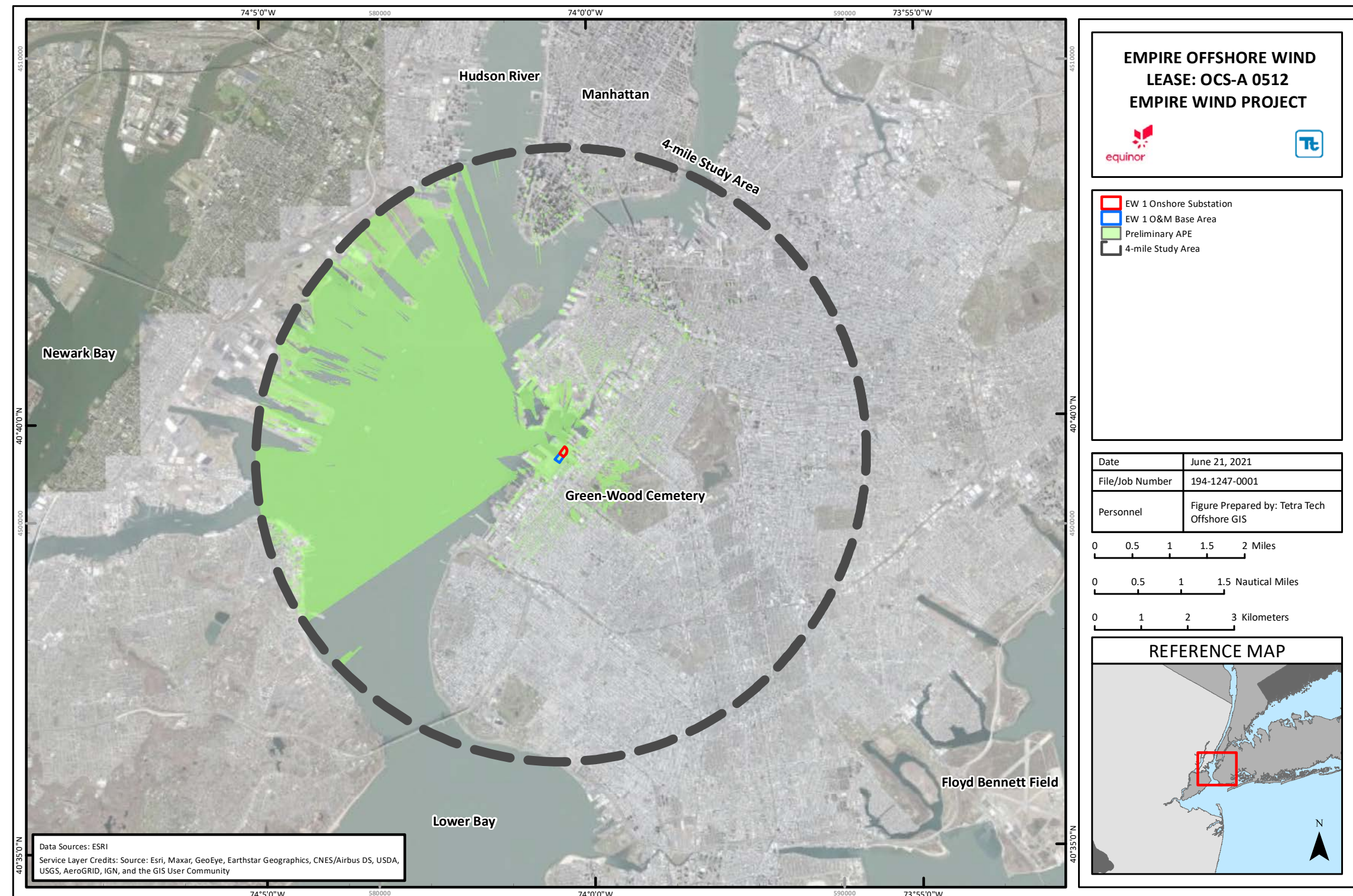
- Be associated with significant historical events; or
- Be associated with the lives of persons significant in our past; or
- Embody a distinctive style, period, method of construction, or represent work of a master or possess high artistic values, or represent a district with components that may lack individual distinction; or
- Have yielded or may be likely to yield information important in history or prehistory.



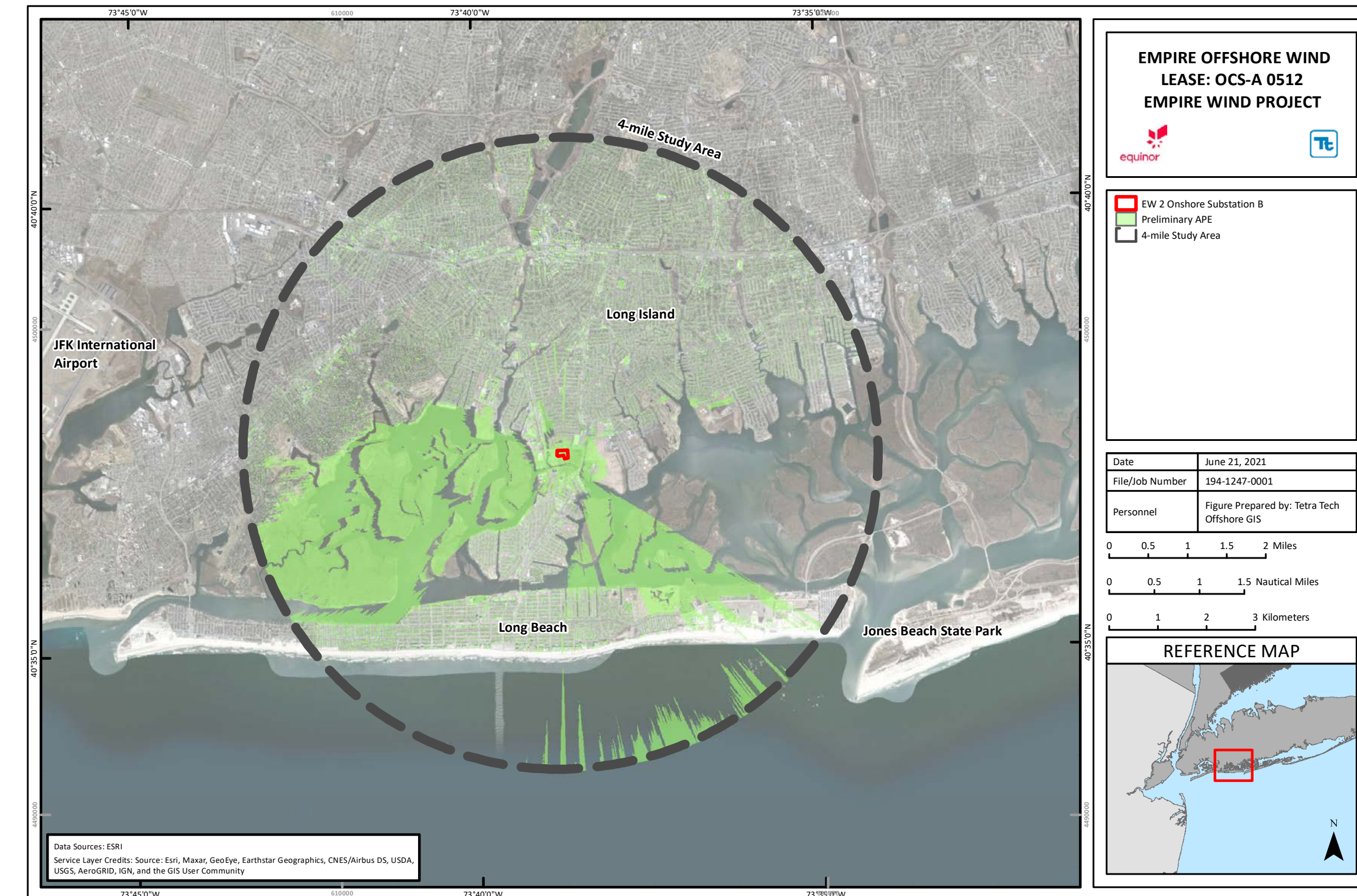
Fire Island Lighthouse

Empire Wind Offshore Wind Project

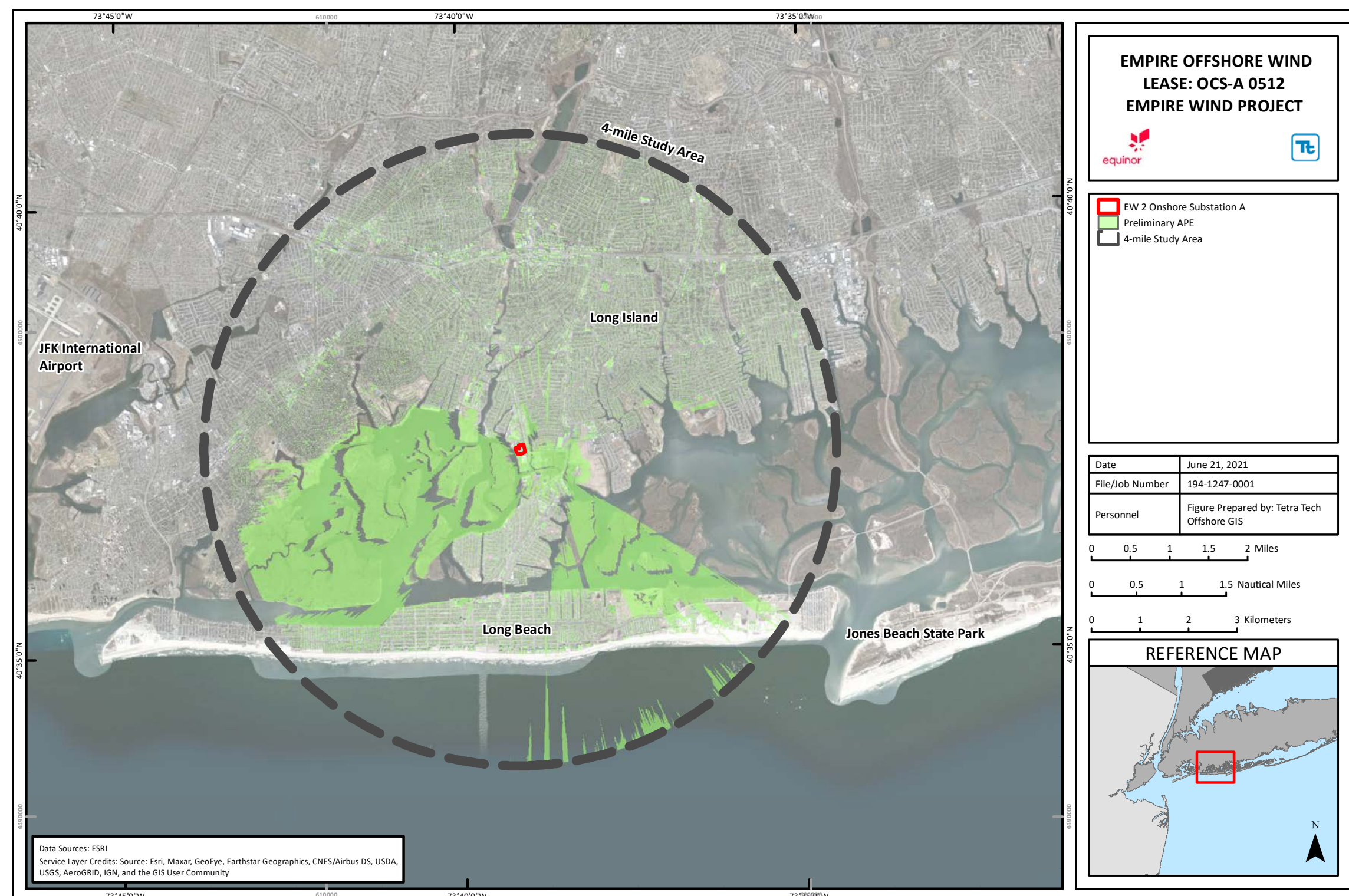
# Area of Potential Effect (APE) for Analysis of Visual Effects to Historic Properties (AVEHP)



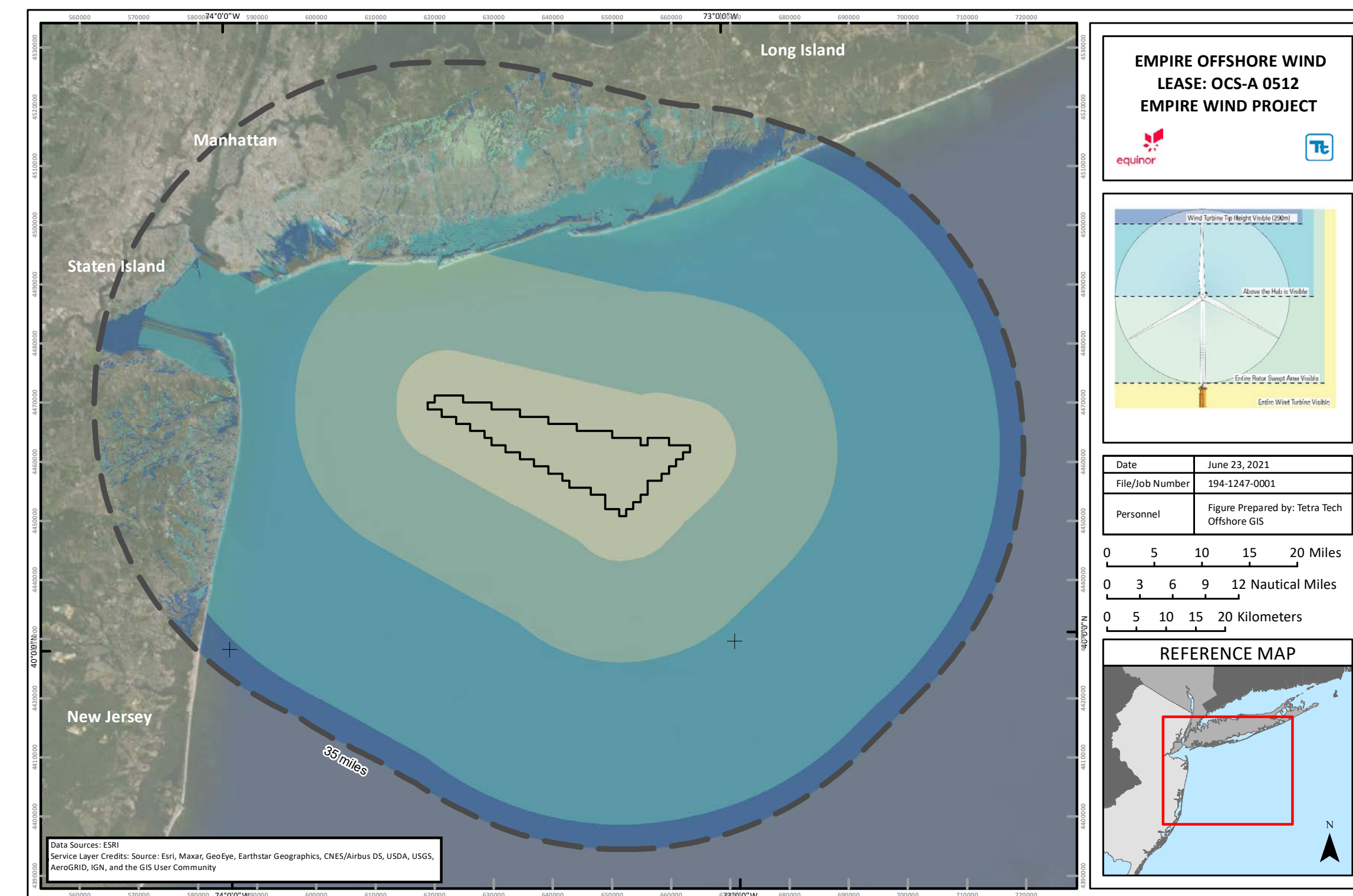
**Empire Wind 1 Onshore AVEHP Preliminary APE**



**Empire Wind 2 Onshore AVEHP Preliminary APE (Substation B)**



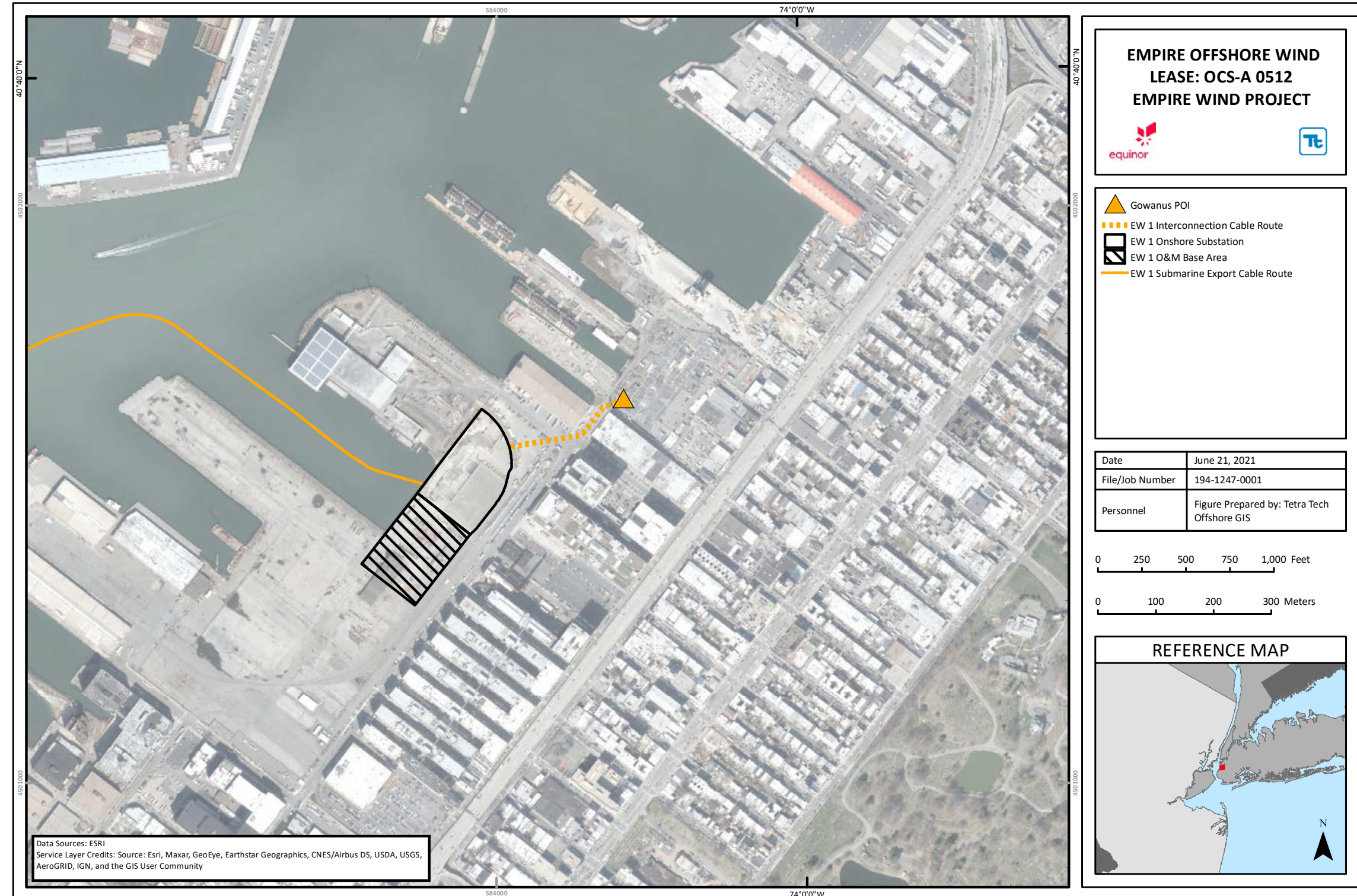
**Empire Wind 2 Onshore AVEHP Preliminary APE (Substation A)**



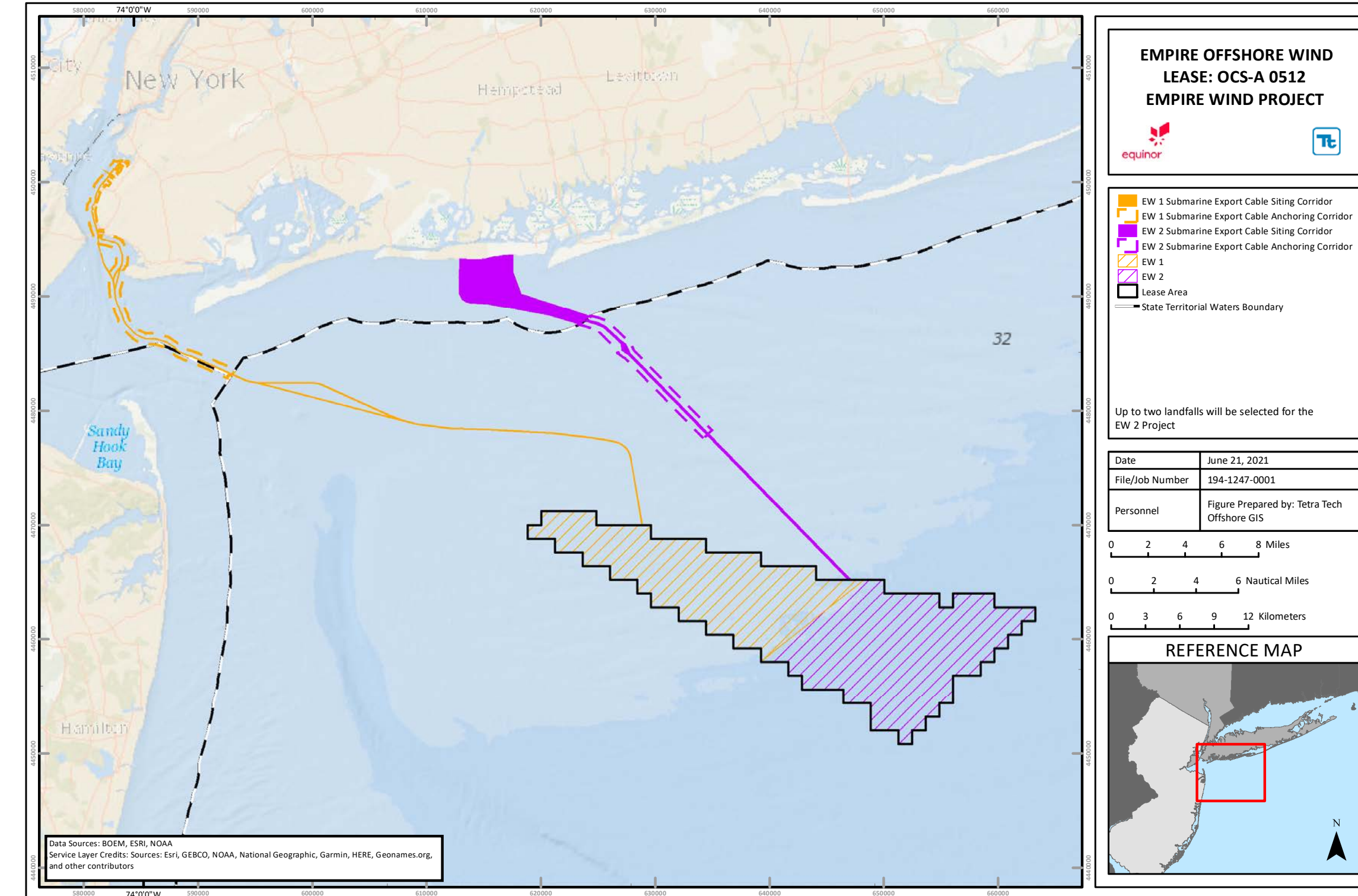
**Offshore AVEHP Preliminary APE**

Empire Wind Offshore Wind Project

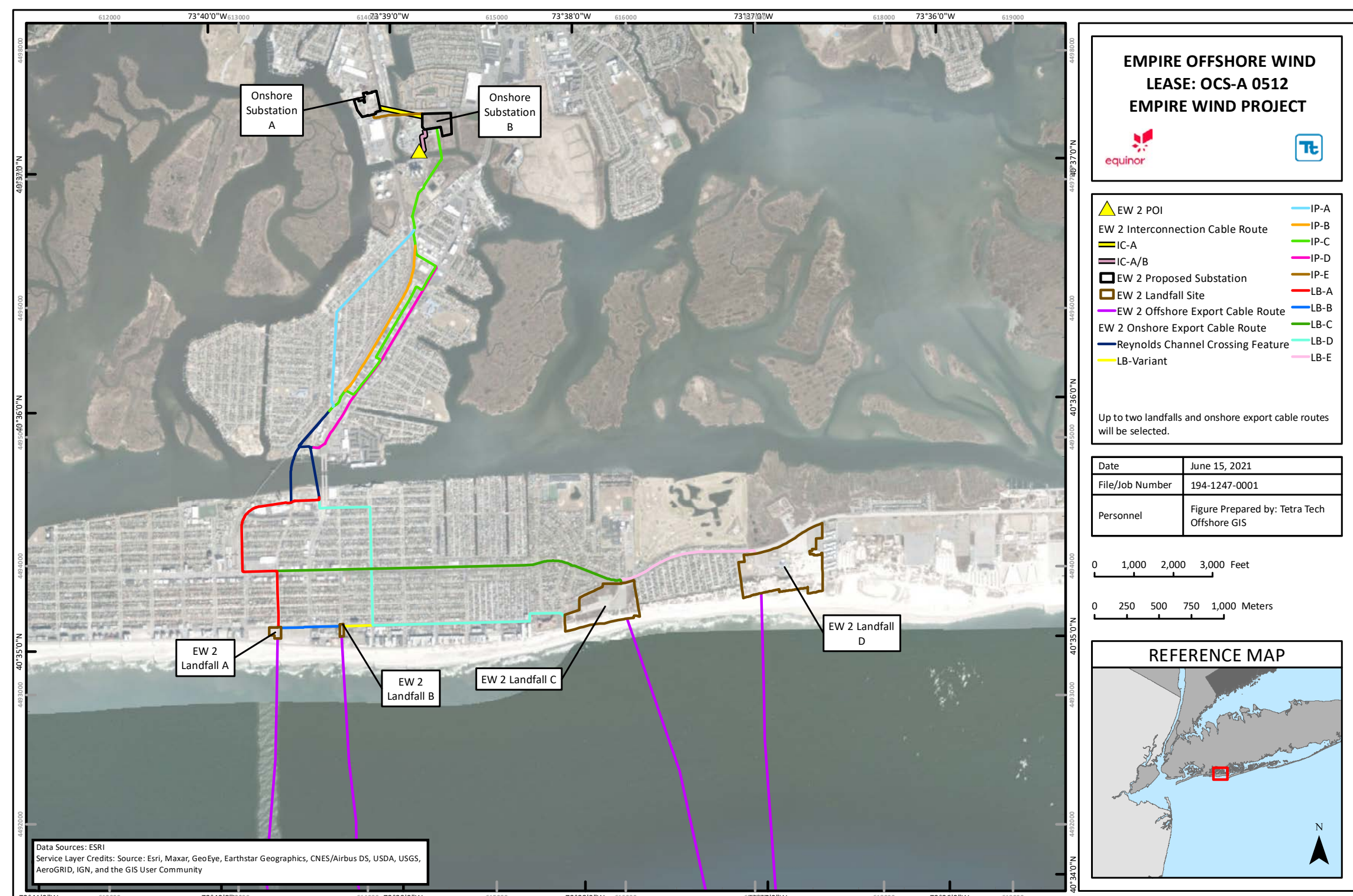
# Terrestrial and Marine Archaeological Area of Potential Effect (APE)



Empire Wind 1 Terrestrial Archaeological Preliminary APE includes all areas where ground-disturbing activities are proposed.



The Marine Archaeological Preliminary APE includes the entire Lease Area and submarine export cable siting corridors and anchor corridors for Empire Wind 1 and Empire Wind 2.



Empire Wind 2 Terrestrial Archaeological Preliminary APE includes all areas where ground-disturbing activities are proposed.