



**BOEM** Bureau of  
Ocean Energy Management

# The Gulf of Mexico Renewable Energy Lease Issuance Draft Environmental Assessment

---

August 9 & 11, 2022

BOEM New Orleans Office

# Meeting Objectives

1. Provide information on the Gulf of Mexico Renewable Energy Lease Issuance Draft Environmental Assessment (Draft EA) for potential offshore wind energy leasing activities.
2. Provide information on renewable energy leasing and the development of the Wind Energy Areas (WEAs) in the Gulf of Mexico.
3. Answer questions related to leasing, the WEAs, and the Draft EA.
4. Provide an opportunity for the public to give input on the Draft EA.



# Agenda

- Facilitator's Welcome
- Welcome & Opening Remarks
- Presentation – Overview of Renewable Energy Leasing and Wind Energy Area Identification in the Gulf of Mexico
- Presentation – Overview of the Gulf of Mexico Renewable Energy Lease Issuance Draft Environmental Assessment
- Clarifying Questions on the Renewable Energy Leasing Process and Draft EA
- Break (15 minutes)
- Public Comment Opportunity for the Draft EA
- Next Steps and Closing



**Poll 1 – Who has joined the webinar?**  
*Identify your affiliation*



## Poll 2 – Public Comment

*Are you planning on providing public comment on the Draft EA today?*



# Welcome & Opening Remarks

---

*Mike Celata, Regional Director, BOEM New Orleans Office*



# BOEM

Bureau of Ocean Energy  
Management

## BOEM GOM Area Identification

---

*Tershara Matthews, Chief Office of Emerging Programs  
BOEM New Orleans Office*



# Gulf of Mexico Outer Continental Shelf Renewable Energy

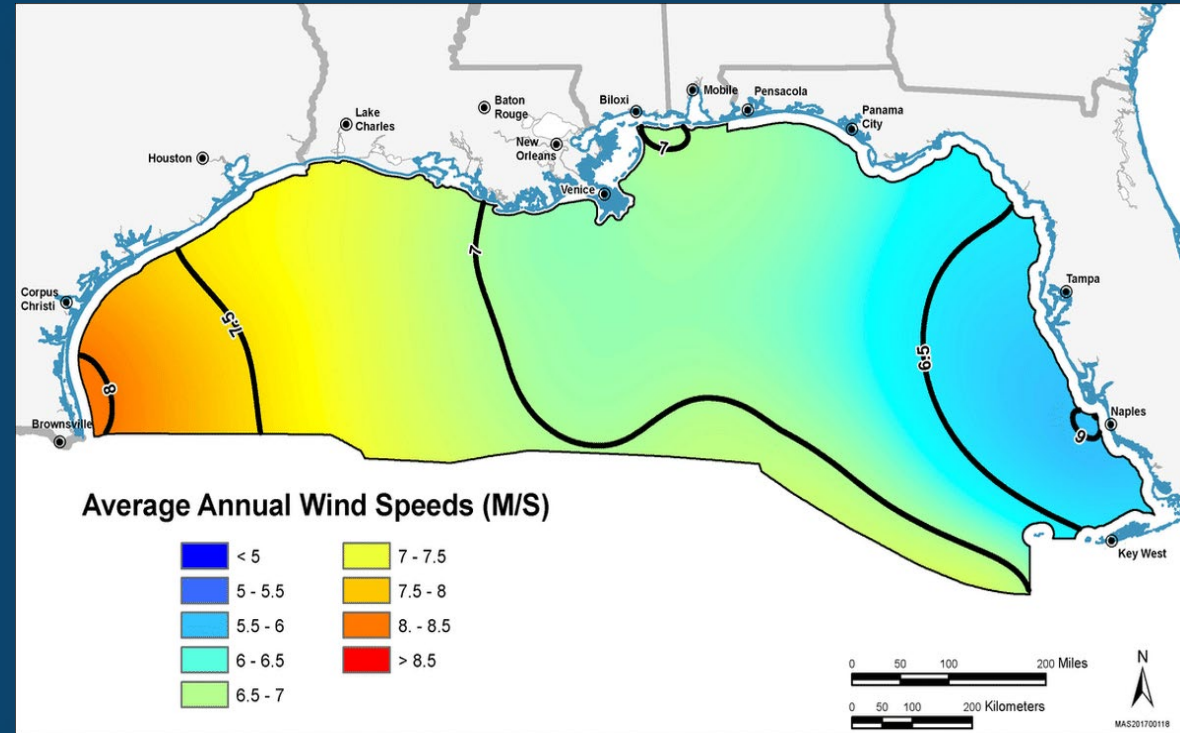
## Agenda

- **Background**
- **Renewable Leasing Process**
- **Next Steps**



# Gulf of Mexico Renewable Energy

- Louisiana Governor Edwards requested a Task Force on October 26, 2020.
- December 2020, Gulf of Mexico Region responded to the LA Task Force Request Letter with a region-based Task Force approach. The inaugural GOM Regional Task Force Meeting was held on June 15, 2021.
- Conducting outreach and engagement to collect data and information.
- Advantages: Proximity to oil and gas supply chain – leverage existing capabilities
- Challenges: Hurricanes – major hurricanes could increase turbine and substructure costs



# BOEM Renewable Energy Process: Overview



## Planning & Analysis

~ 2 YEARS

- Intergovernmental Task Force
- Request for Information or Call for Information and Nominations
- Area Identification
- Environmental Reviews



## Leasing

~ 1-2 YEARS

- Publish Leasing Notices
- Conduct Auction or Negotiate Lease Terms
- Issue Lease(s)



## Site Assessment

UP TO 5 YEARS

- Site Characterization
- Site Assessment Plan

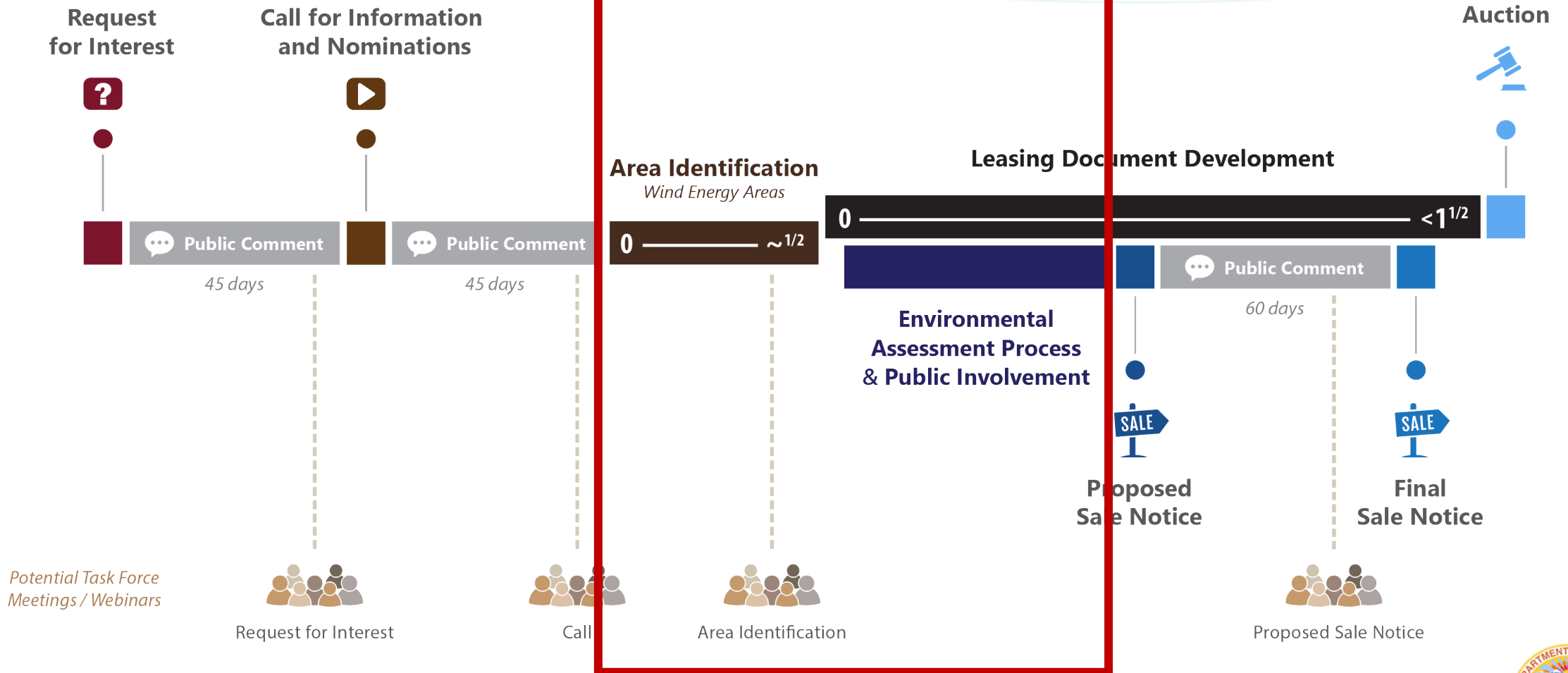


## Construction & Operations

~ 2 YEARS (+25)

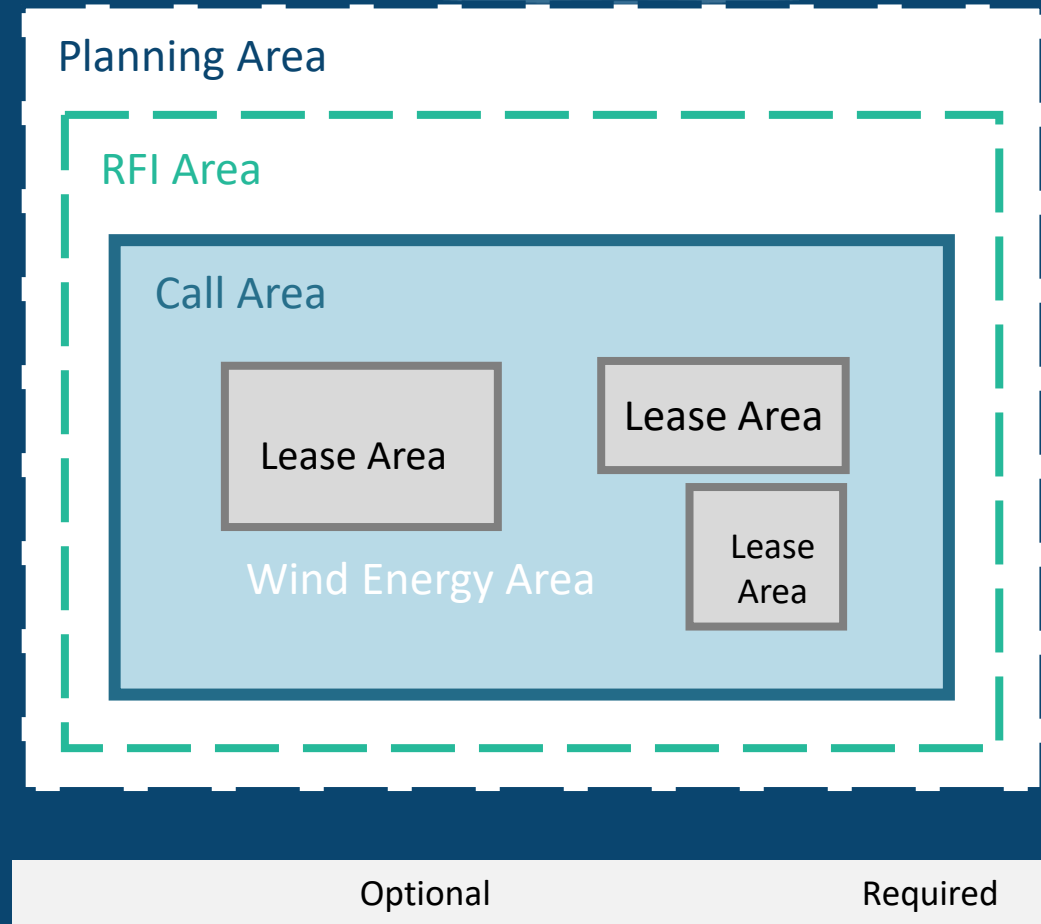
- Construction & Operations Plan
- Facility Design Report and Fabrication & Installation Report
- Decommissioning
- Environmental and Technical Reviews

# Renewable Energy Process: Focus on Pre-Lease Activities

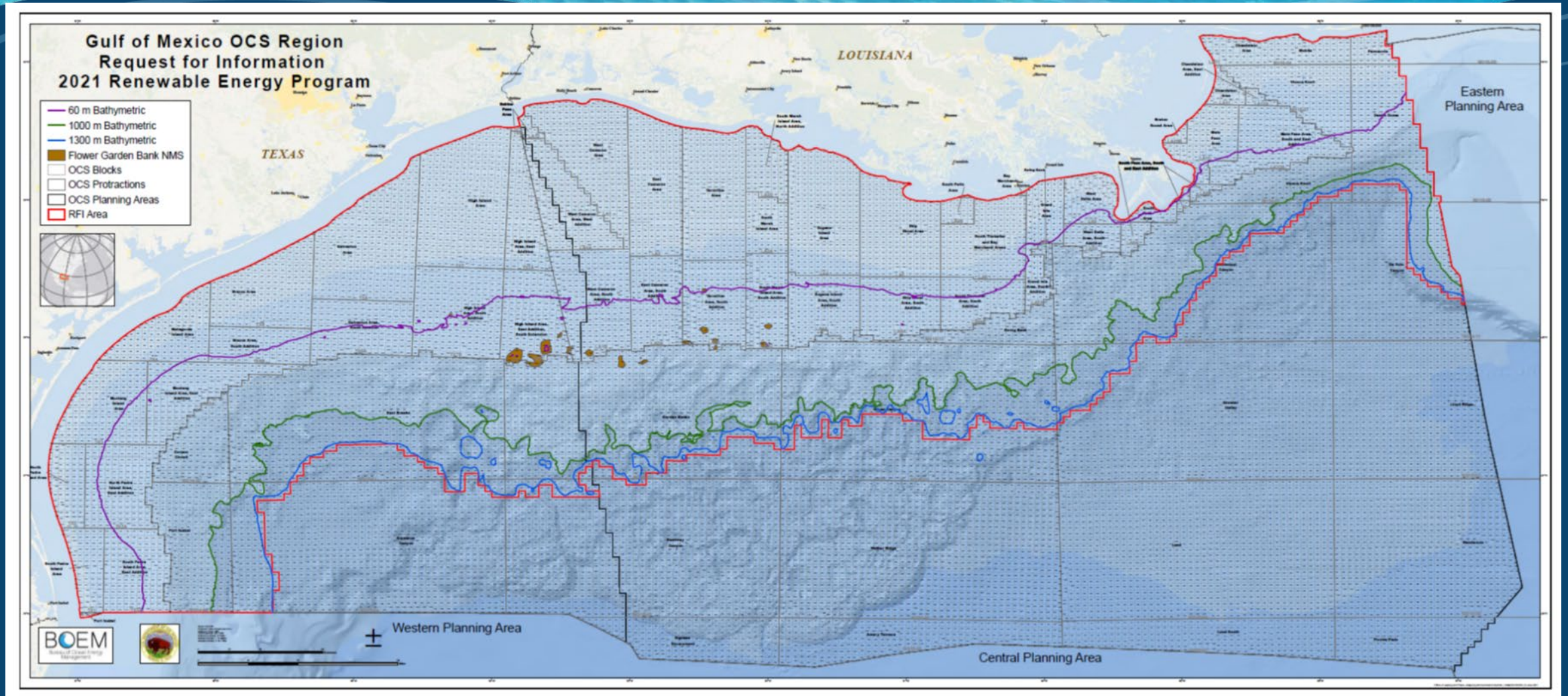


# Renewable Energy Process: Lease Areas

- Wind Energy Areas have the potential for further division into Lease Areas



# Request for Interest (RFI) Area

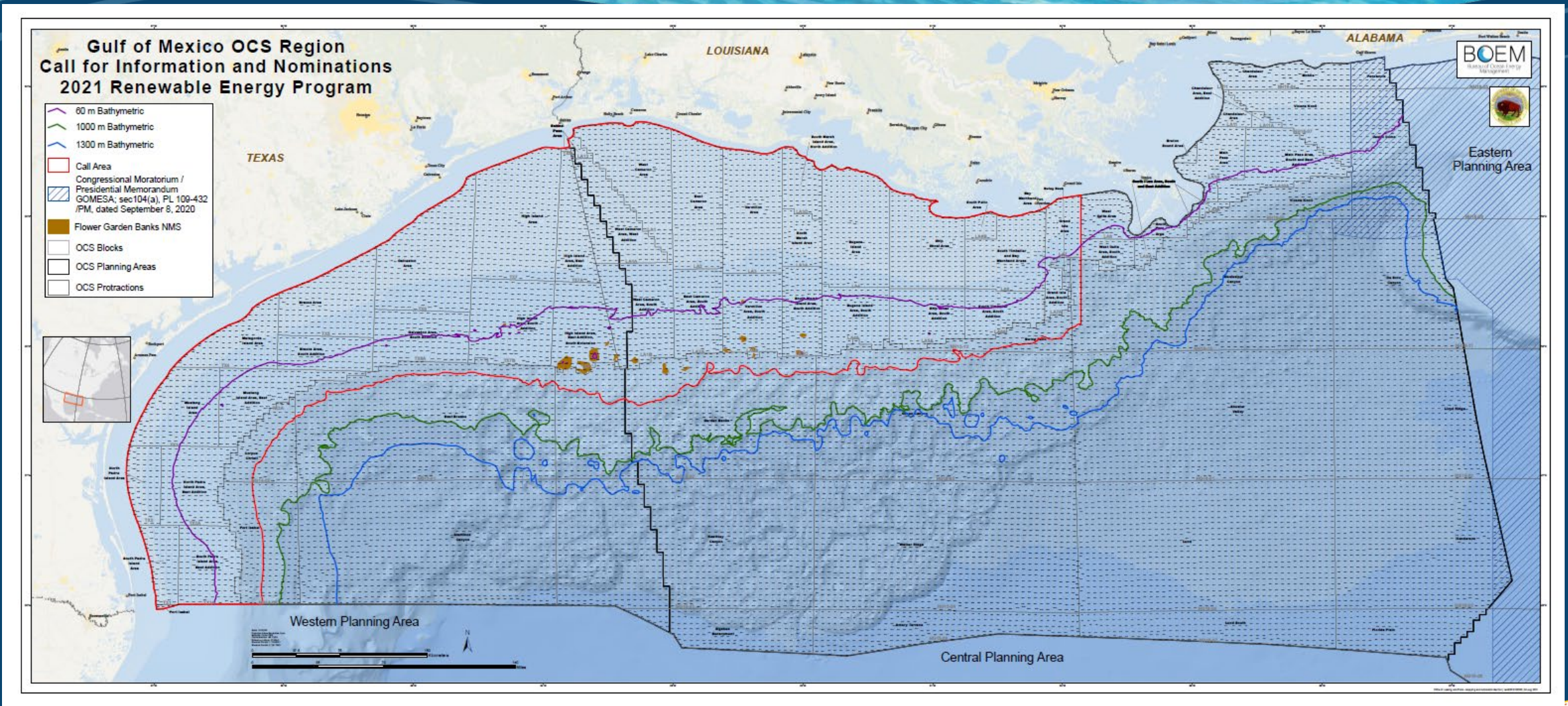


# RFI Comment Summary

Stakeholder Comments	Number of comments
Private Citizens	10
State Agencies (LA)	2
Federal Agencies	2
Universities	1
Non-governmental Organizations (NGOs)	14
Industry	10
Total Comments	39



# Call for Information Area



# Call Comment Summary

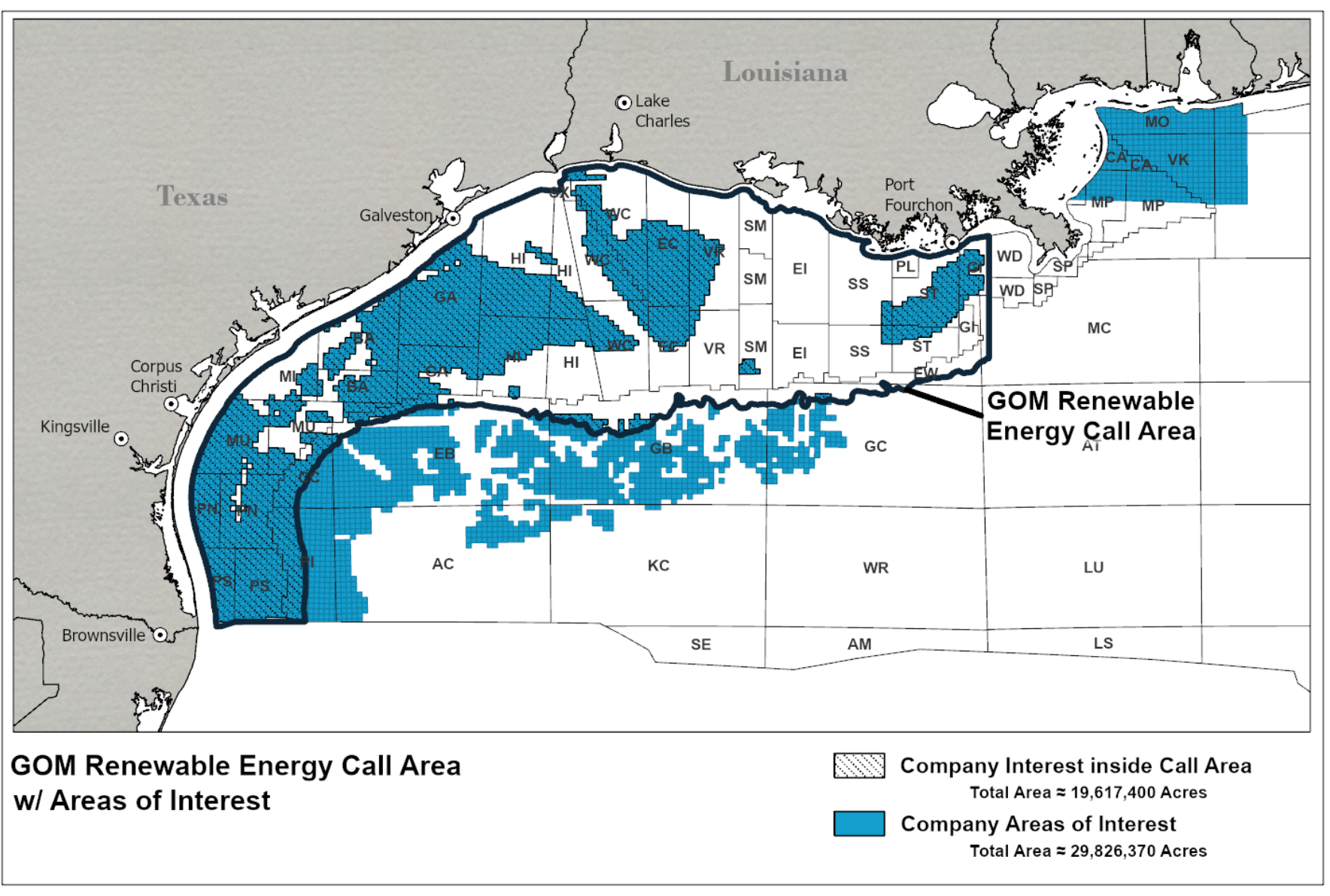
Stakeholder Comments	Number of comments
Private Citizens	10
State Agencies	1
Federal Agencies	5
Universities	0
Non-governmental Organizations (NGOs)	16
Industry	8
Total Comments	40



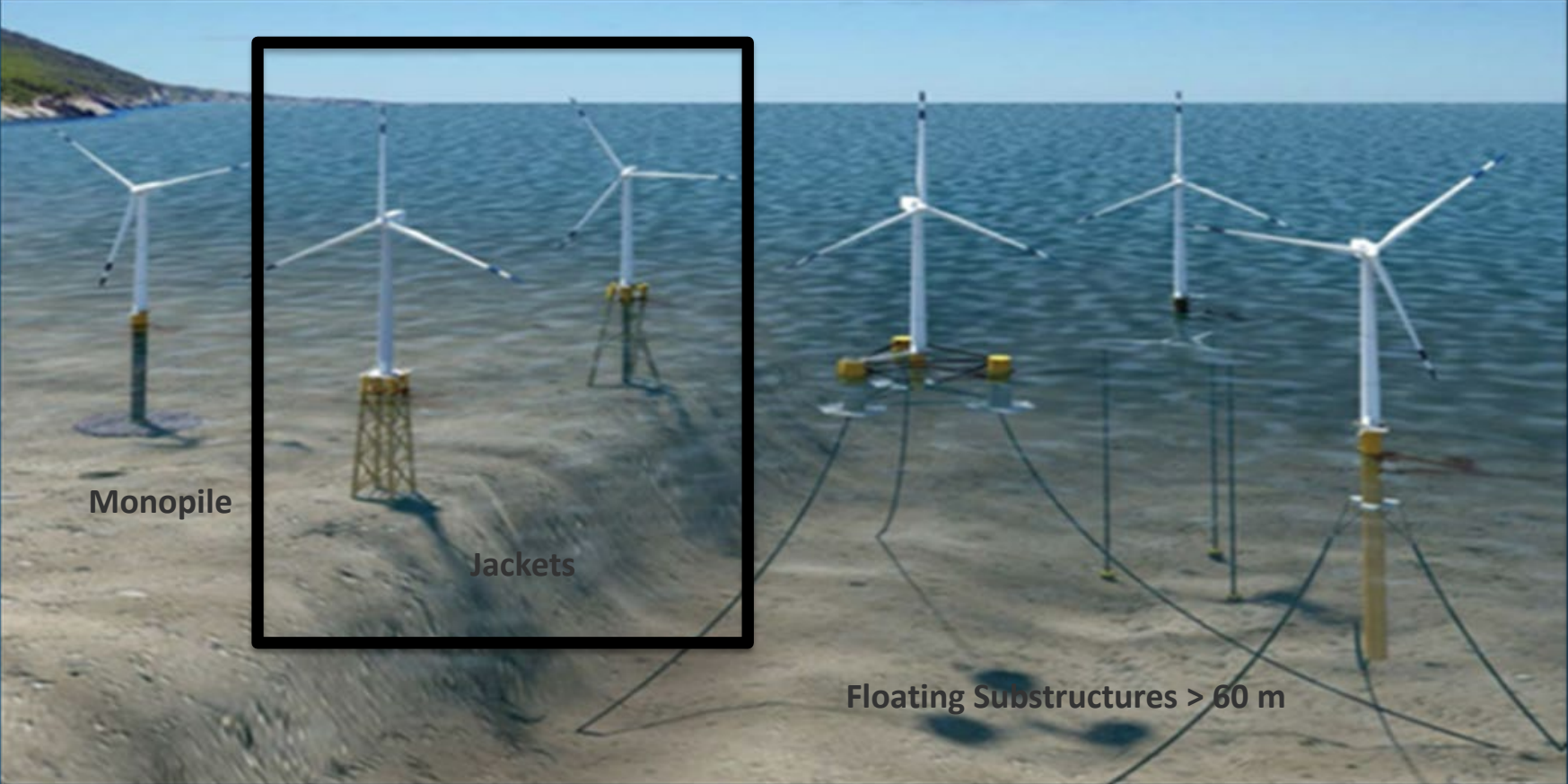
# Some Major Comments Received on the Call for Information

- Request for 20 nm Coastline Buffer for Migratory Birds
- Request for 20 nm Coastline Buffer for Menhaden Fisheries for flyovers
- Protection for the Significant Sediment Resource Areas (SSRAs)
- Request for 100-400 m Buffer for Rice's Whale
- Request for exclusion of high-moderate high shrimping areas
- Request for 2 nm buffer for navigation fairways
- Removal of areas located near low-altitude training areas for DoD

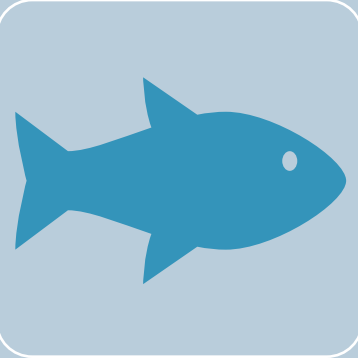
# Companies' Areas of Interest



# Offshore Wind Turbine Structures



# Stakeholder Engagement Meetings



Fishery Meetings  
23 Informational Meetings  
3 Planned Feedback Meetings  
Fisheries Summit



Industry Meetings  
21 Held Meetings  
OOC Webinar  
Individual Company Meetings  
OTC Conference



State Agency Meetings  
14 Meetings  
Introductory State Meetings  
Monthly Meetings with LA  
Task Force Meeting in February 2022



Migratory Bird Coordination Meetings  
10 Meetings  
Formed a Collaboration Team with FWS



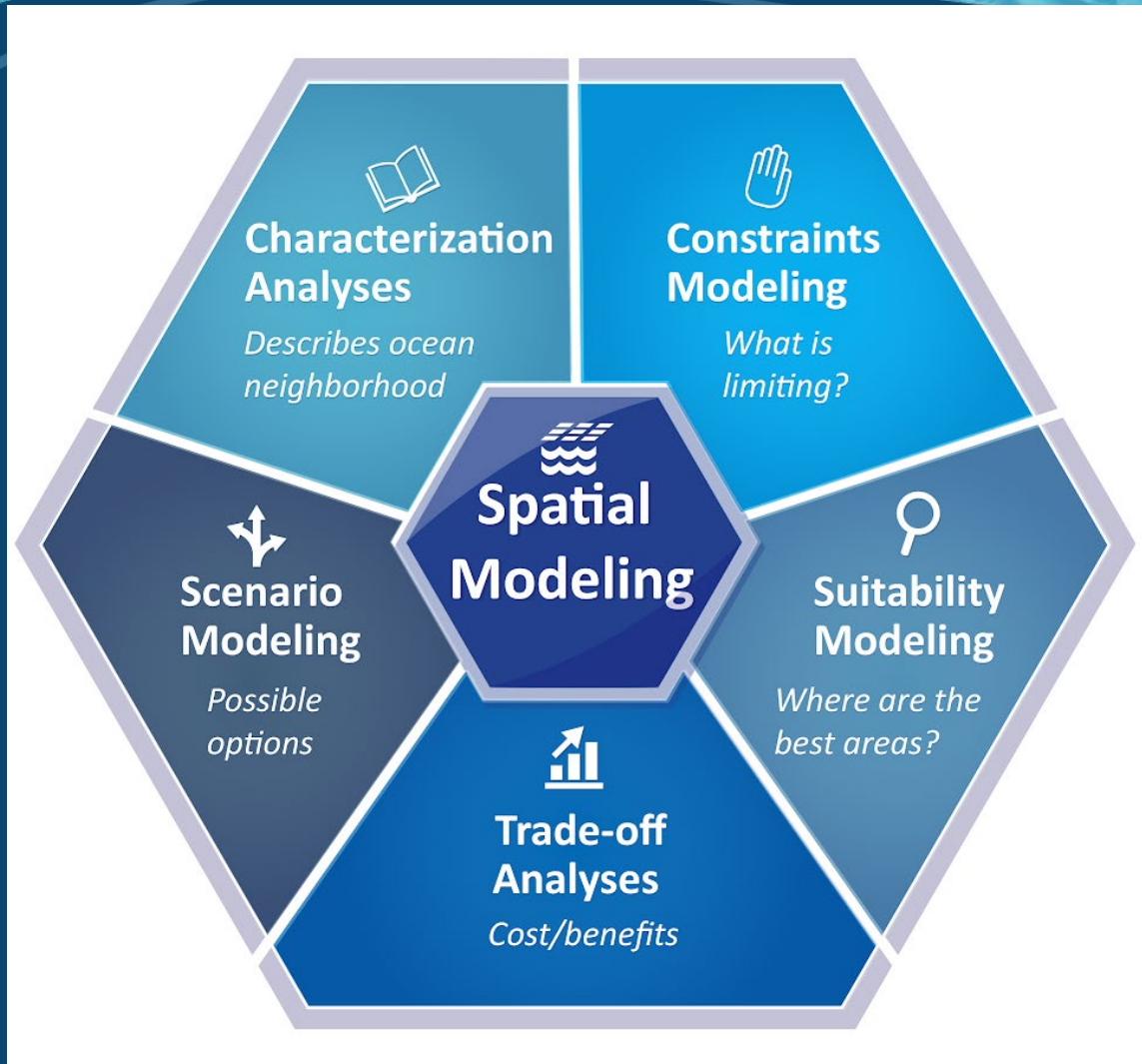
# Stakeholder Engagement Milestones

Stakeholder Engagement	Date
Gulf States Marine Fisheries Commission	March 17, 2021
NOAA	April 6, 2021
DoD	April 9, 2021
The Business Network for Offshore Wind	April 22, 2021
State of Mississippi	April 2021
The Business Network for Offshore Wind	May 6, 2021
OOC Wind Workshop	May 10, 2021
GOM Fishery Management Council	May 26, 2021
Tribal Informational Meeting	June 10, 2021
BOEM GOM Task Force Meeting	June 15, 2021
LA Wind Week	June 21-25, 2021
Gulf of Mexico Alliance Offshore Wind Webinar	June 30, 2021
LA Oyster Task Force Meeting	July 20, 2021
LA Crab Task Force Meeting	August 3, 2021
LA Shrimp Task Force Meeting	August 4, 2021
GOM Fishery Management Council	August 25, 2021

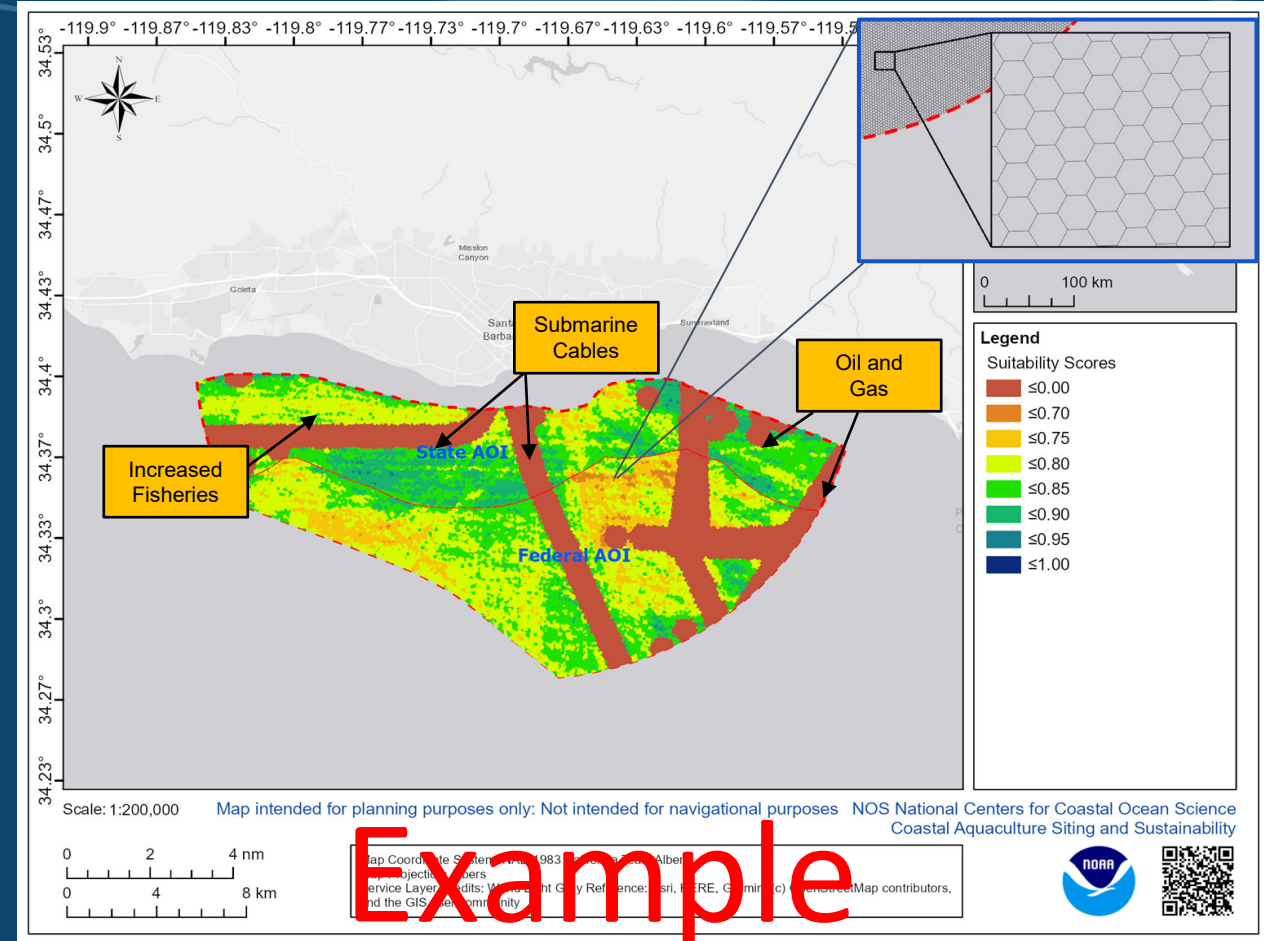
Stakeholder Engagement	Date
Reef Fish Stakeholders' Alliance	September 10, 2021
NOAA-NMFS	September 24, 2021
Gulf States Marine Fisheries Commission	October 20, 2021
Coasts, Oceans, Ports, and Rivers Institute (COPRI)	October 28, 2021
Shrimp Advisory Panel	December 8, 2021
Fisheries Mitigation Workshop	December 15, 2021
BOEM's Fisheries Summit	January 19-20, 2022
GOM Fishery Management Council	January 24, 2022
BOEM GOM 2 <sup>nd</sup> Task Force Meeting	February 2, 2022
Professional Landmen's Association NO	February 23, 2022
LA Climate Task Force Meeting	March 9, 2022
TX GLO Meeting	March 14, 2022
Gulf States Marine Fisheries Commission	March 16, 2022
Gulf of Mexico Fisheries Management Council	April 6, 2022
Gulf of Mexico Conference (GOMCON)	April 25, 2022



# Ocean Planning Model



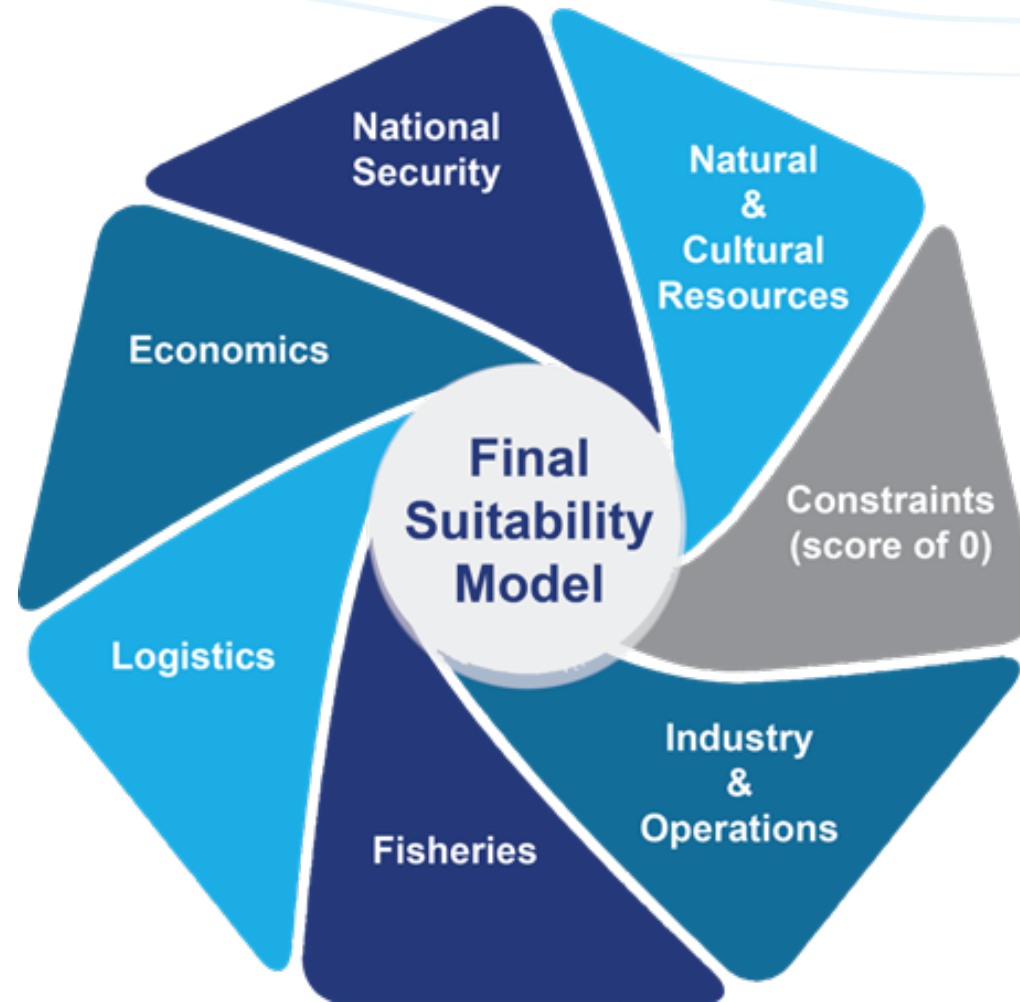
A **spatial suitability model** weights locations relative to each other based on a given criteria.



Example

\*\*PRE-DECISIONAL AND DELIBERATIVE

# Ocean Planning - Deconflicting Model structure



**Equally weighted submodels**

\*\*PRE-DECISIONAL AND DELIBERATIVE

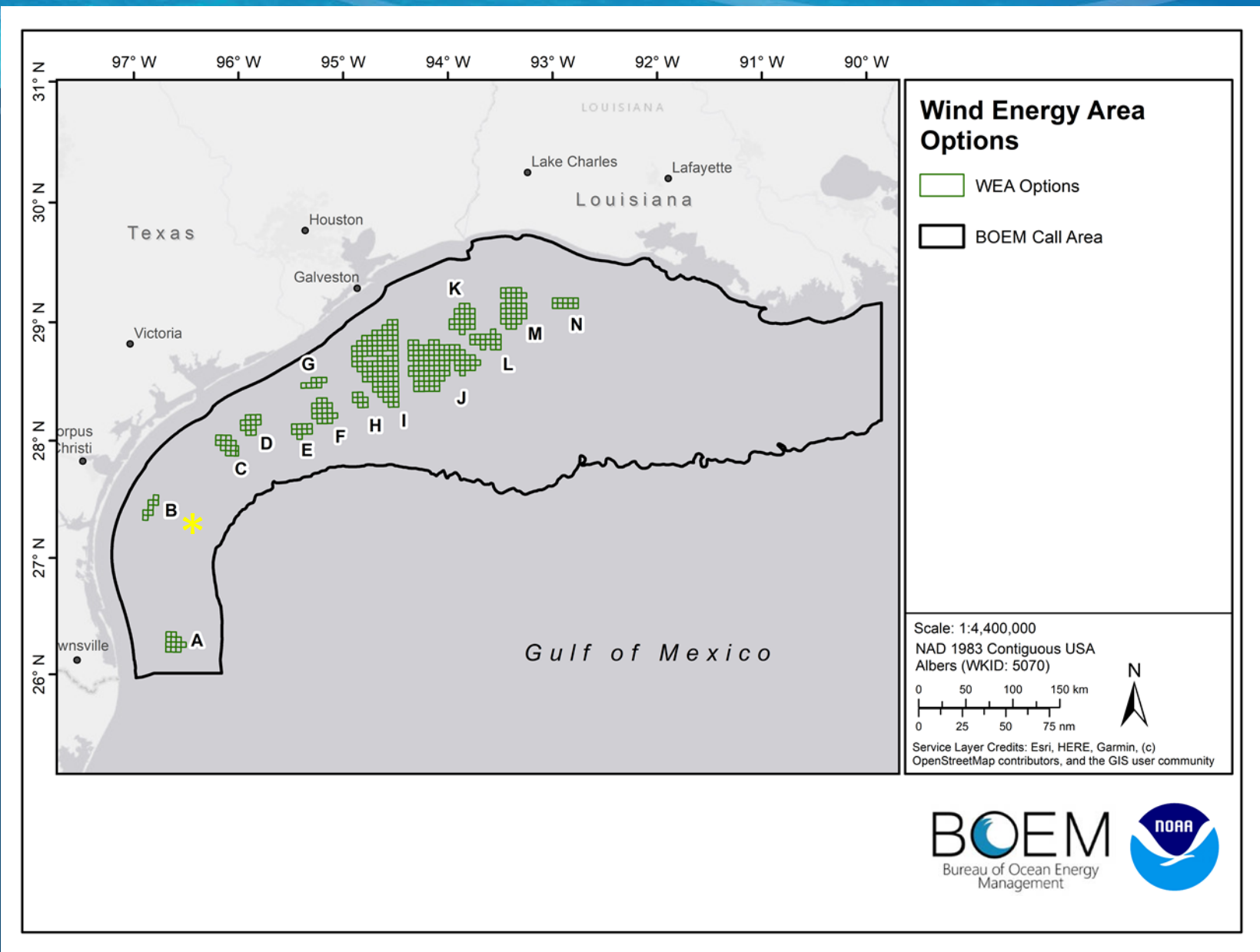
# Deconflicting Process

13 deconflicted areas ranging from: 39,840 to 546,645 acres

2 million acres total

Top scoring clusters at the  $p=.05$  significance level (approx. top 5%)

\*Area B is no longer an option due a later DoD assessment requesting removal.





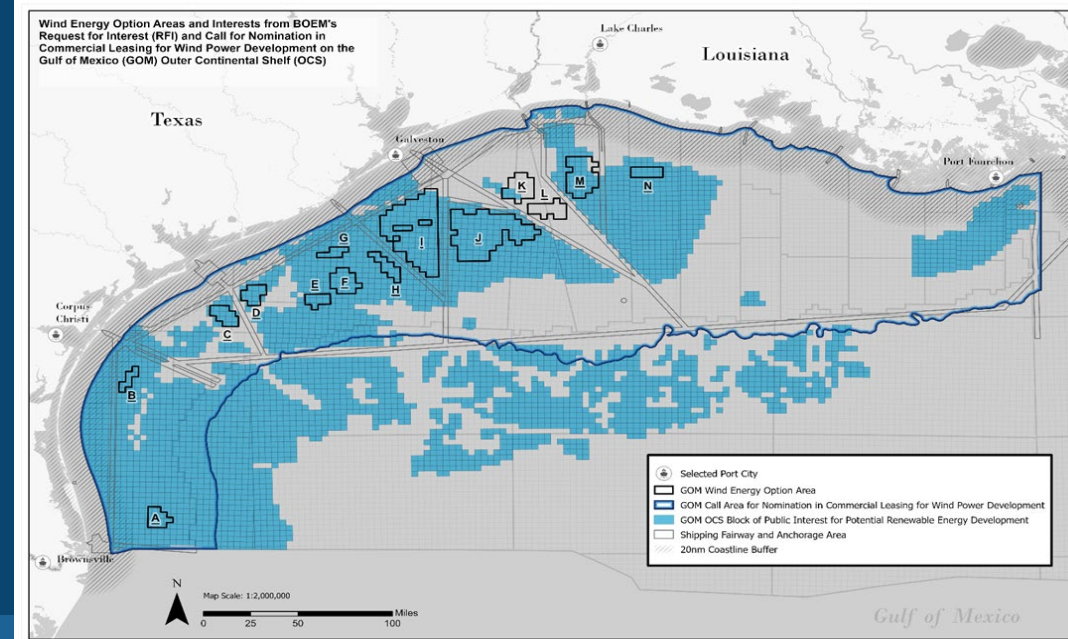
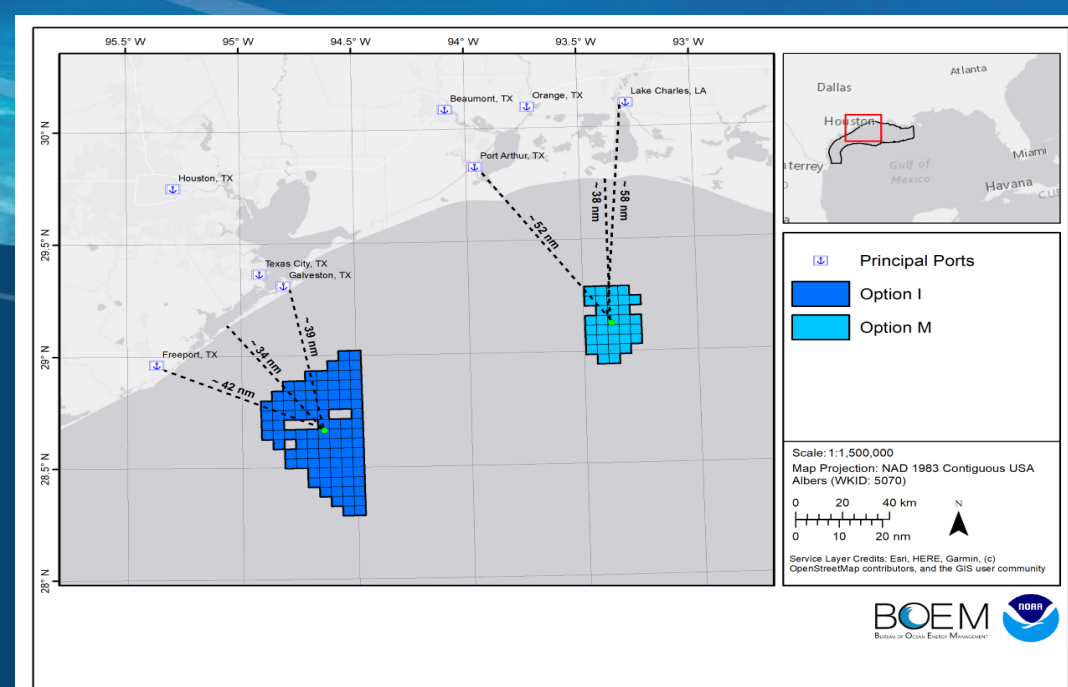
# GOM Recommended WEAs

1. Galveston (Option I) 546,645 acres
2. Lake Charles (Option M) 188,023 acres

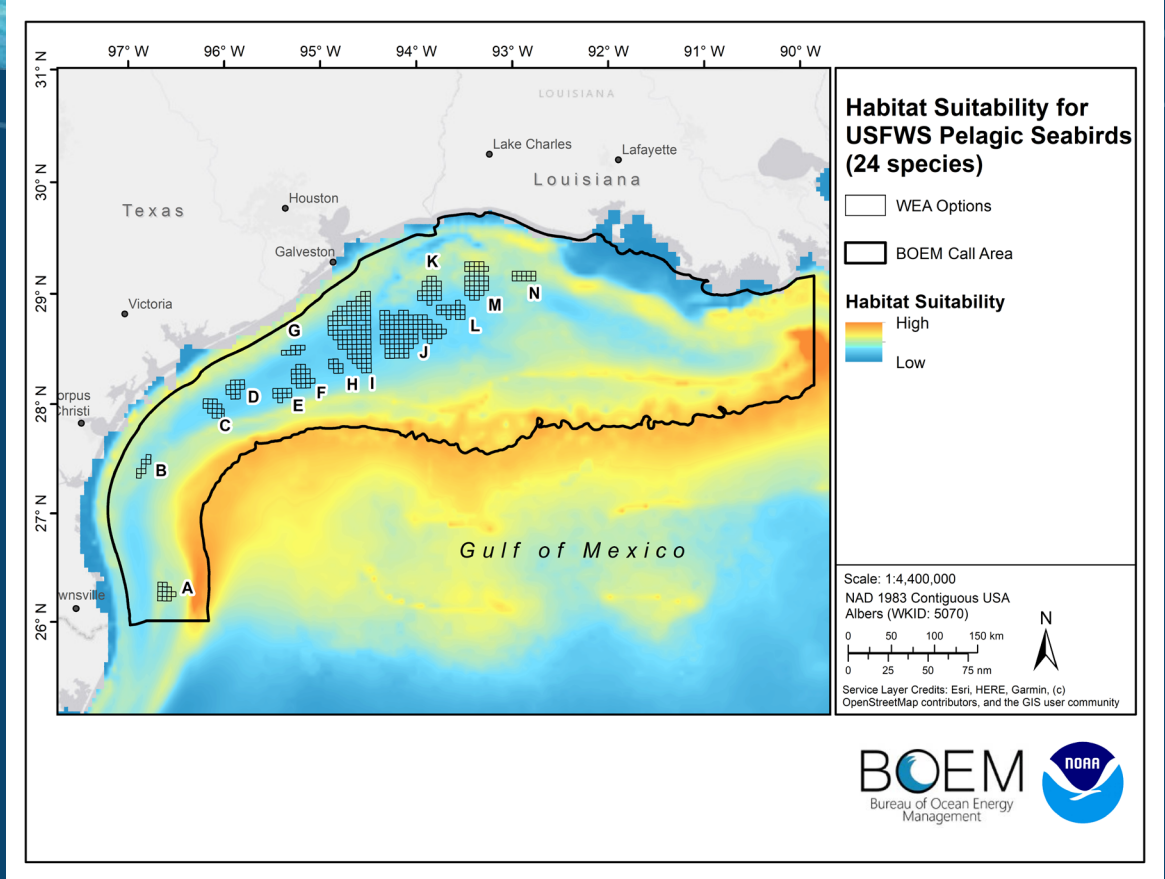
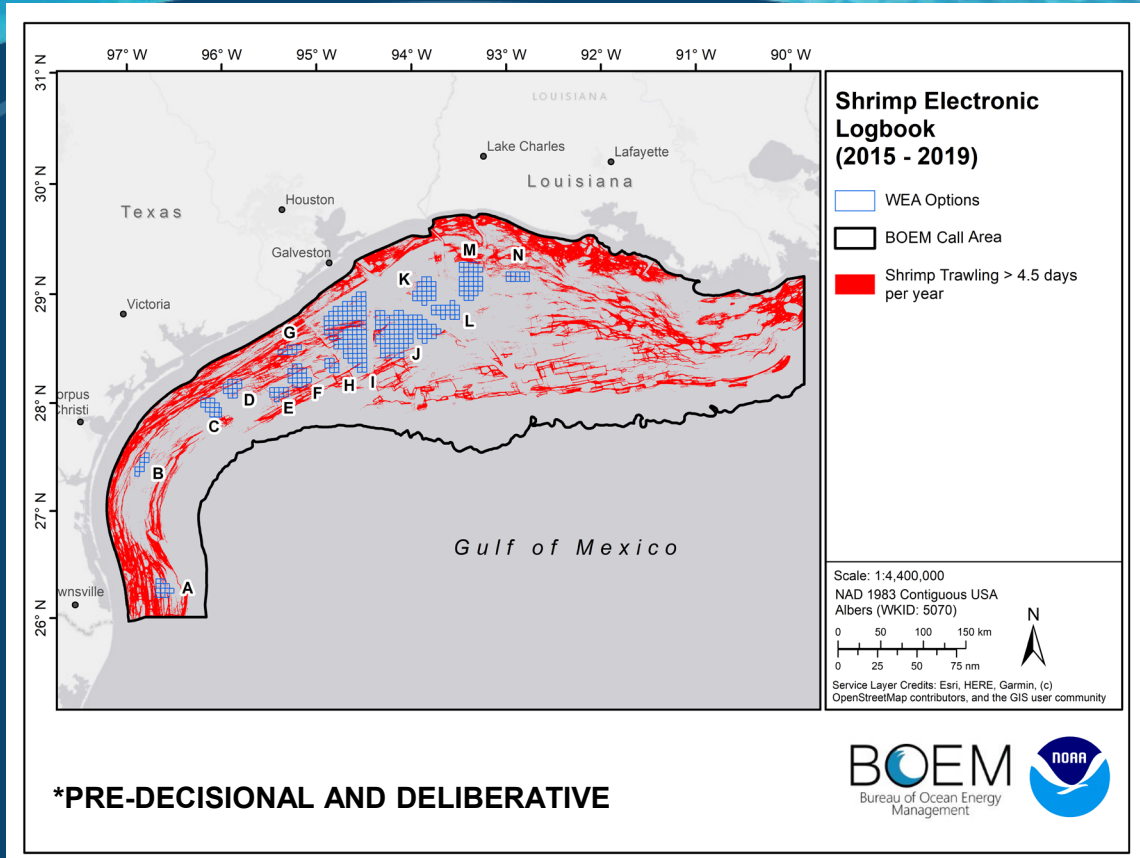
## Rationale for WEA Recommendations:

- Competitive Interest
- Less National Security Concerns
- Proximity to Points of Interconnection
- Proximity to Shore
- Less than 10% Moderate-High Shrimping
- Enough acreage to further divide into smaller lease sale areas

\*\*PRE-DECISIONAL AND DELIBERATIVE



# Rationale for Recommended WEAs

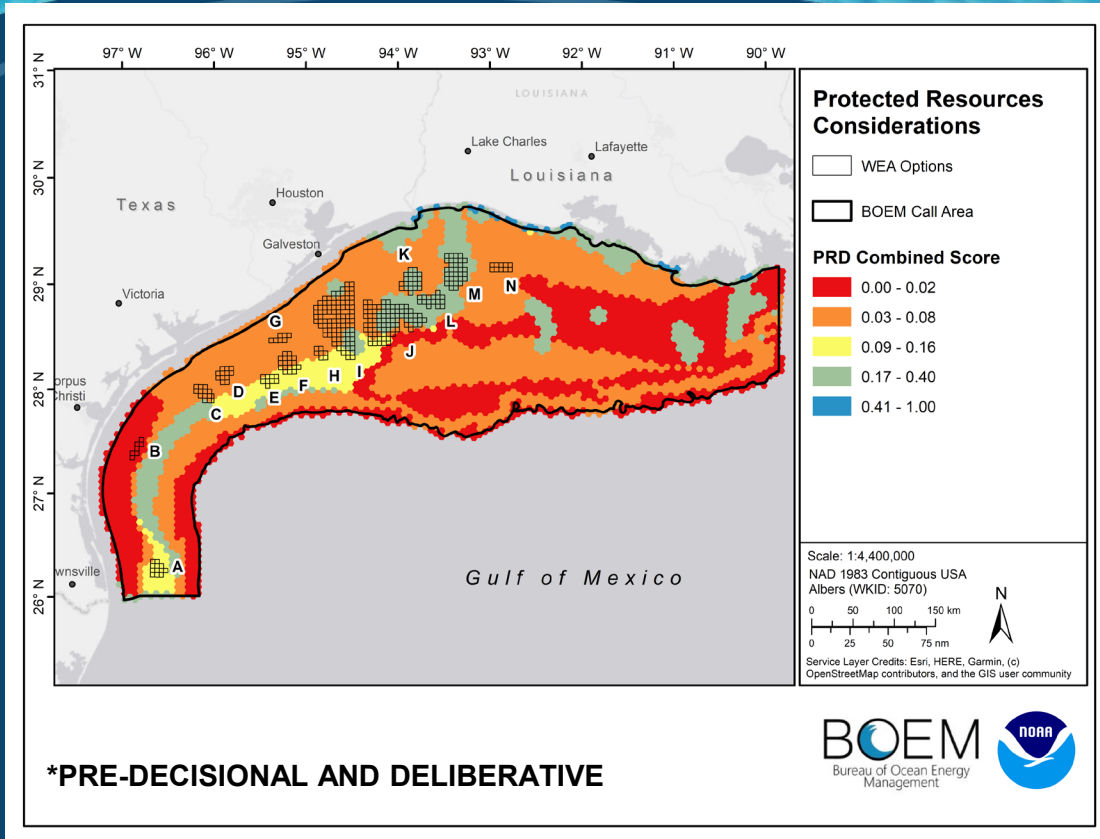


## Shrimp Electronic Logbook (2015 - 2019)

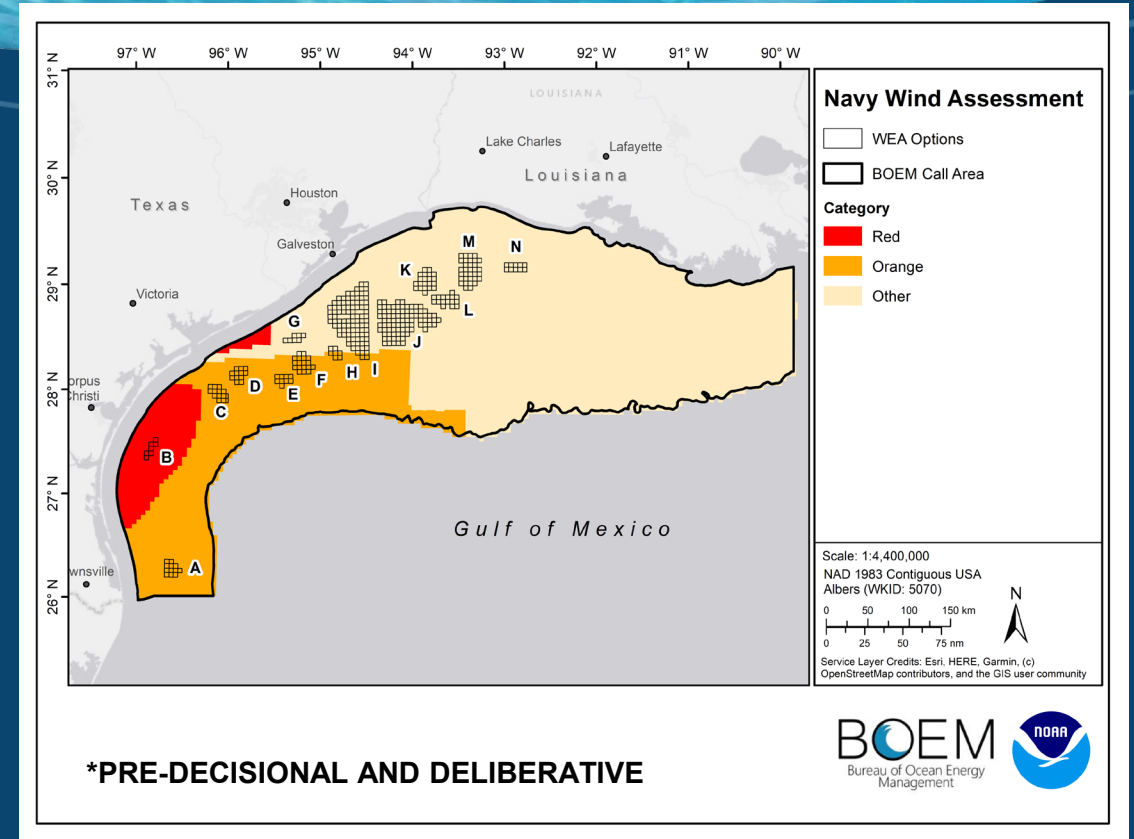
## USFWS Pelagic Bird Considerations (24 species)



# Rationale for Recommended WEAs Part Two

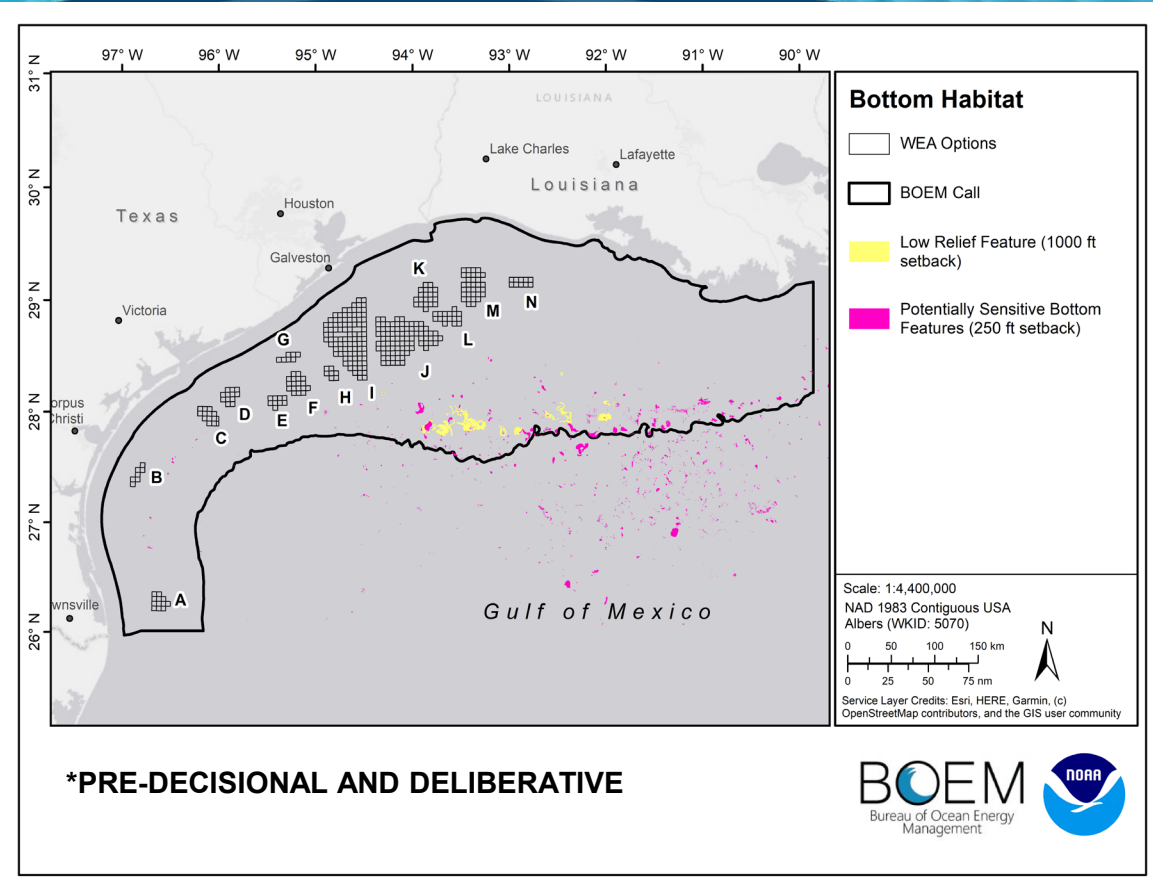


National Marine Fisheries Service Protected Resources combined composite data layer implemented within the relative suitability analysis.

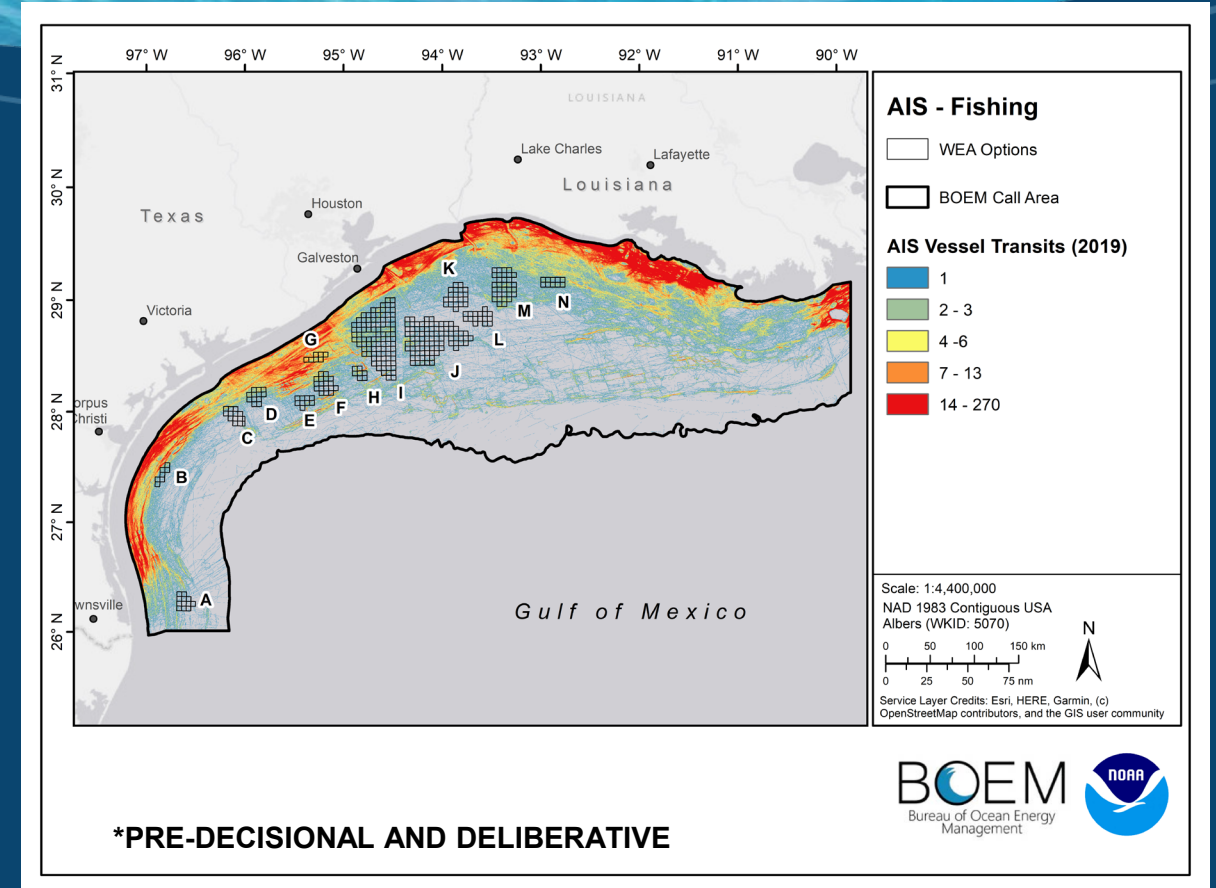


U.S. DoD Preliminary Assessment of the Call Area. The Red Areas denote Wind Exclusion Zones.

# Rationale for Recommended WEAs Part Three



Bottom Habitat-Natural and Cultural Submodel



AIS Fishing Data-Industry and Operations Submodel

# GOM Offshore Wind Energy Leasing Milestones

- **June 11, 2021:** Request for Interest (RFI) published in the Federal Register.
- **June 15, 2021:** BOEM GOM Inaugural Intergovernmental Renewable Task Force Meeting to present and gather information.
- **July 26, 2021:** Comment Period for the RFI Closed.
  - BOEM received 39 RFI comments.
- **November 1, 2021:** BOEM published the Call for Information and Nominations (Call) in the Federal Register. Docket Number BOEM-2021-0077
- **December 16, 2021:** Comment Period for the Call Closed.
  - BOEM received 40 Call comments.
- **January 19 and 20, 2022:** Fisheries Summit
- **February 2, 2022:** Held 2<sup>nd</sup> GOM Intergovernmental Renewable Task Force Meeting
- **July 20, 2022:** Draft Wind Energy Areas Published. Comment period closes September 2, 2022
- **July 20, 2022:** Draft Environmental Assessment Published. Comment period closes September 2, 2022
- **July 27, 2022:** Held 3<sup>rd</sup> GOM Intergovernmental Renewable Task Force Meeting



# Future Action: **Next Few Months**

## Next Steps

- Publish Area Identification (ID) memo
- Identify lease areas, auction format, and publish Proposed Sale Notice (PSN)
- Final EA
- Final Sale Notice (FSN)
- Proposed Lease Auction



\*\*PRE-DECISIONAL AND DELIBERATIVE

# Team Members

GOM Regional Director:

Michael Celata – [michael.celata@boem.gov](mailto:michael.celata@boem.gov)

GOM Deputy Regional Director:

Laura Robbins– [laura.robbins@boem.gov](mailto:laura.robbins@boem.gov)

Chief of Emerging Programs:

Tershara Matthews - [tershara.matthews@boem.gov](mailto:tershara.matthews@boem.gov)

Renewable Energy Coordinator:

Idrissa Boubé - [idrissa.boube@boem.gov](mailto:idrissa.boube@boem.gov)

Fisheries Lead:

Mariana Steen - [mariana.steen@boem.gov](mailto:mariana.steen@boem.gov)

Data Management:

Dana Inzinna - [dana.inzinna@boem.gov](mailto:dana.inzinna@boem.gov)

Communications:

John Filostrat - [john.filostrat@boem.gov](mailto:john.filostrat@boem.gov)

Hillary McKey - [hillary.mckey@boem.gov](mailto:hillary.mckey@boem.gov)





# Gulf of Mexico Renewable Energy Lease Issuance Draft Environmental Assessment

---

*Michelle Nannen, Environmental Scientist  
BOEM New Orleans Office*





# Environmental Assessment

- **Analysis ONLY covers the impacts of issuing leases and the associated site assessment and site characterization activities**
  - Meteorological (met) buoys
  - Vessel trips
  - Geological and biological surveys
- **Analysis does NOT include**
  - Specific project layouts
  - Cable routes for specific projects
  - Visual impacts of a project
  - Wind Energy Area (WEA) identification
- **Analysis of *SPECIFIC* projects**
  - Covered later in the process
  - After a lease is obtained and project plan submitted
  - Additional opportunities for engagement and consultation

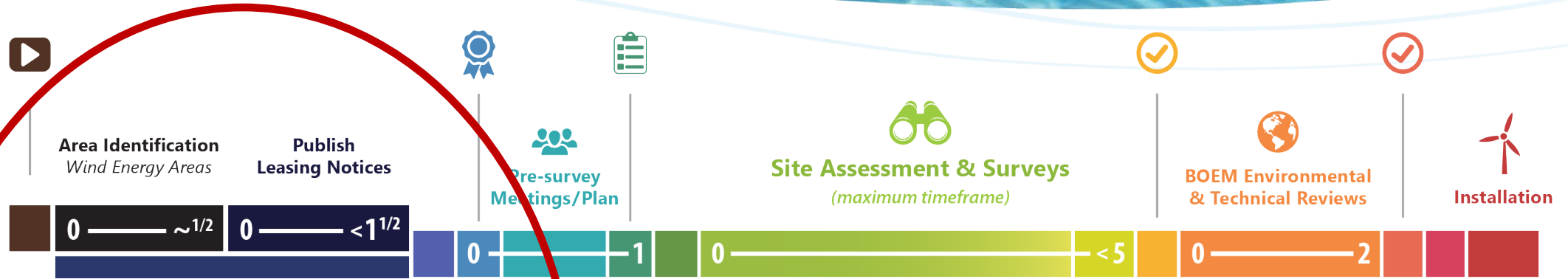


Example of a meteorological (met) buoy

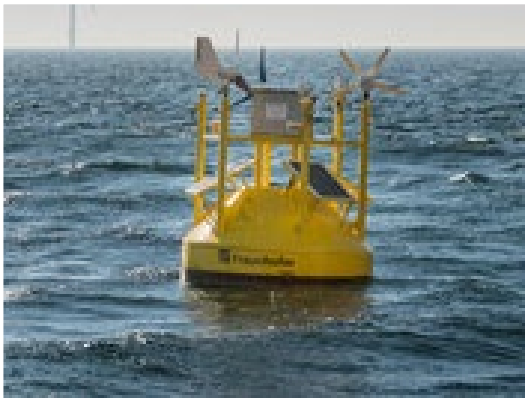
Source: National Data Buoy Center, 2012



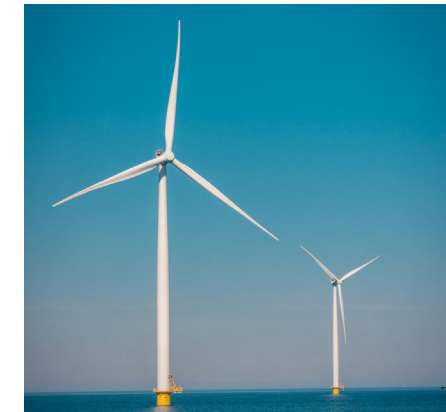
# NEPA and Offshore Wind



Environmental Assessment — Site Characterization and Site Assessment Activities



Environmental Impact Statement — Construction and Operation Plan

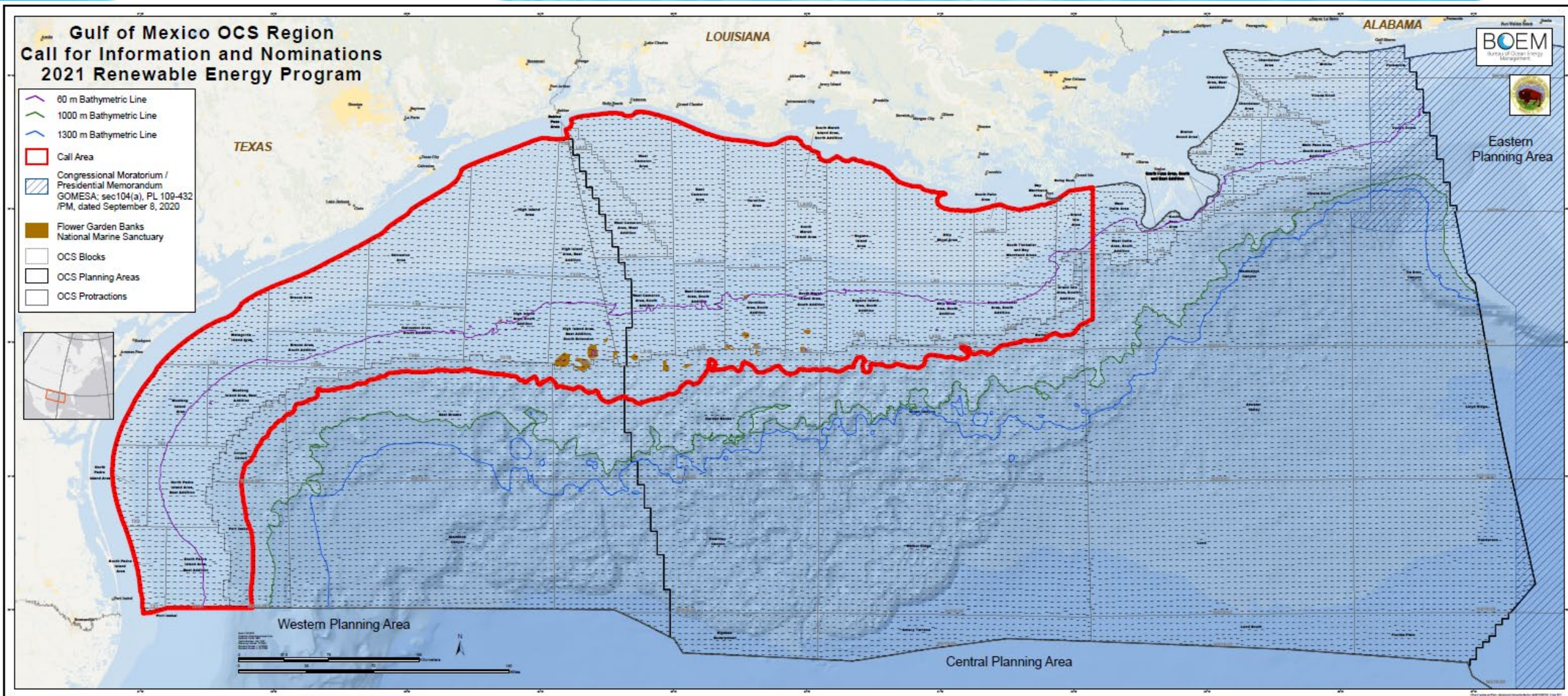


# Overview of the Draft Environmental Assessment

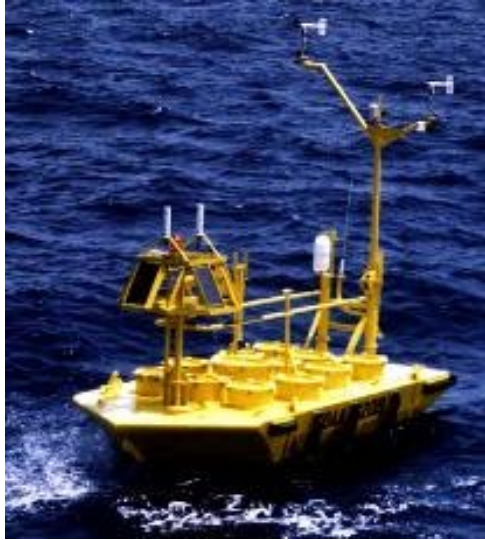
- Purpose of and Need for Action
- Proposed Action
- Analysis Approach and Background
- Routine and Non-Routine Activities and Impact-Producing Factors
- Alternatives
- Environmental Consequences
- Providing Comment on the Environmental Assessment (EA)
- Next Steps



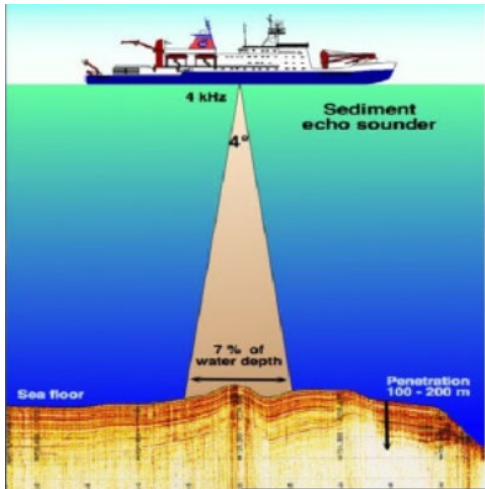
# Call Area



# Purpose of and Need for Action



Source: National Data Buoy Center



- **Purpose**

- Issue commercial and/or research wind energy leases and grants within the Gulf of Mexico (GOM) Call Area

- **Need**

- Confer exclusive right to submit plans to BOEM for potential development
- Determine suitability for commercial offshore wind production and/or transmission through site characterization and site assessment
- Ensure that the site characterization and site assessment activities are conducted in a safe and environmentally responsible manner

- **The issuance of a lease by BOEM to the lessee conveys no right to proceed with construction and operation of a wind energy facility; the lessee acquires only the exclusive right to submit a plan to conduct this activity.**



# Proposed Action

- **The Proposed Action**
  - Issuance of wind energy leases and grants within the GOM Call Area and rights-of-way and rights-of-use in support of wind energy development
- **Issuance of leases or grants would allow only the submittal of plans for BOEM's consideration and approval**
  - Does not constitute an irreversible and irretrievable commitment of resources
- **Purpose of the EA**
  - Determine if the Proposed Action would lead to reasonably foreseeable significant impacts on the environment
    - Analyze the effects of site characterization and site assessment activities that take place following the issuance of commercial and research wind energy leases

UNITED STATES DEPARTMENT OF THE INTERIOR  
Office of Renewable Energy Programs  
Bureau of Ocean Energy Management

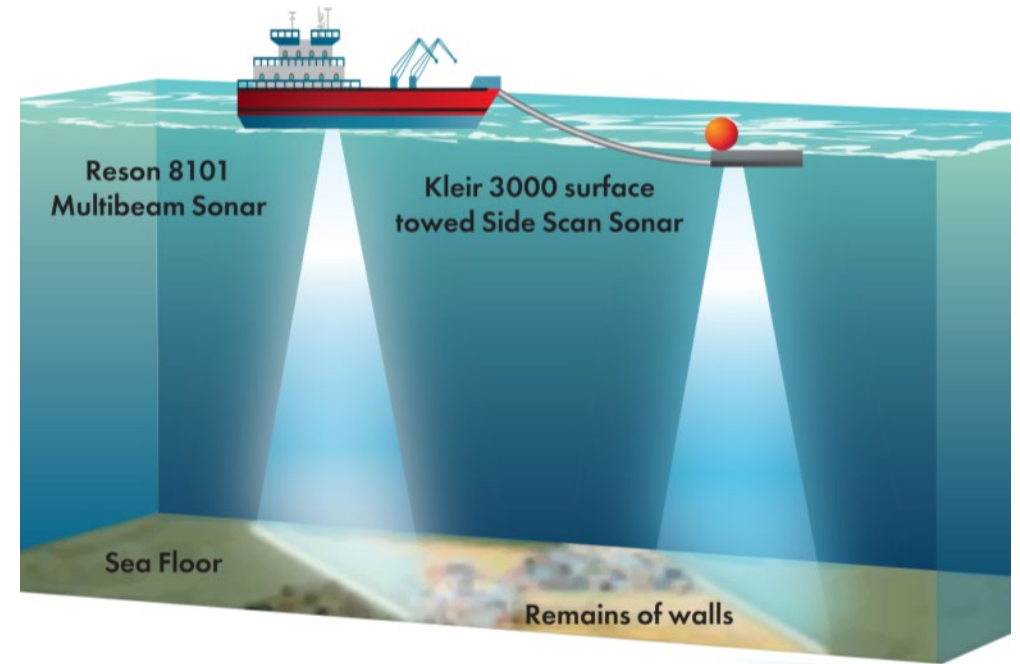
June 2019

Guidelines for  
Information Requirements for a Renewable Energy  
Site Assessment Plan (SAP)



# Scope of the Analysis

- **EA is a programmatic assessment**
  - May be used for more than one lease issuance
- **Up to 18 leases in the Call Area**
  - Number of leases based on the estimate of foreseeable future activities based on historical trends of an emerging Renewable Energy Program on the Atlantic OCS
  - EA analyzes impacts of
    - A single OCS wind energy lease issuance
    - Issuance of 18 OCS wind energy leases
- **No more than 6-8 leases issued per lease sale**
  - Similar to those issued for Atlantic sales

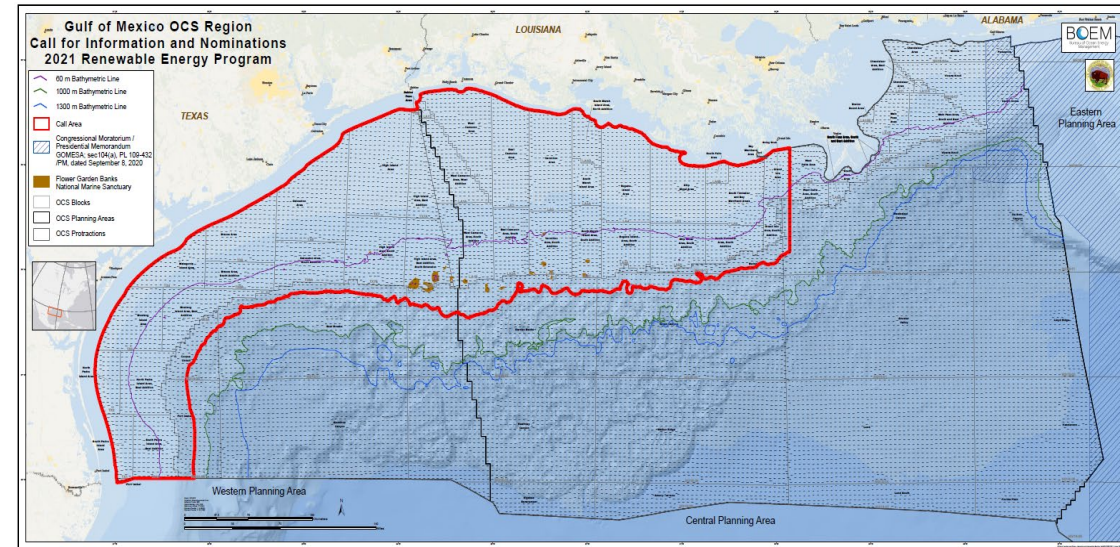


Example of a seafloor survey



# Approach for this EA

- **Approach differs from Atlantic wind energy lease issuance EAs**
  - Analyze the Call Area rather than the WEAs
    - Allows greater flexibility for future identification of WEAs
    - Provides NEPA coverage for non-competitive and research leases proposed in the Call Area
- **Approach more in line with stakeholders in the GOM Region**
  - Familiar with regional NEPA analysis
  - Similar approach to conventional energy NEPA in the GOM Region
    - Analysis for more than one lease issuance
    - Flexibility for ID of several WEAs and lease areas over time
    - Allows for up to 18 leases to be covered in this analysis





# Scoping Comments for the EA

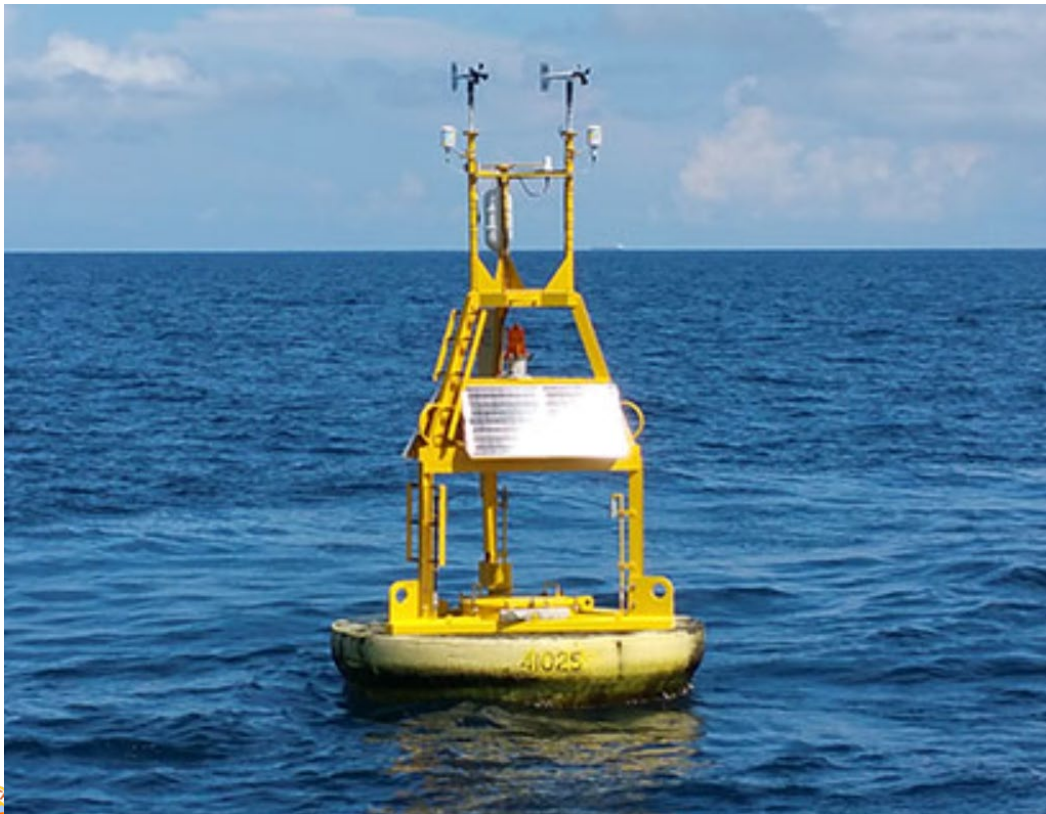
- **Scoping Period**
  - January 11 – February 9, 2022
- **BOEM received 18 scoping comments for the GOM REN EA**
- **Many comments were focused on the development of WEAs and the installation, operation, and decommissioning of a full-scale wind energy project**
  - Comments on WEA identification and a full-scale project were considered out of scope for the EA
    - Comments relating to WEA identification have been shared with the Emerging Programs Office
    - Comments on full-scale wind energy projects have been saved for consideration at a later stage in the process
  - BOEM addressed all applicable, in scope comments in the EA
- **BOEM met with interested State and Federal agencies to discuss concerns and begin an open discussion on the future of REN in the GOM**
  - Applicable results of discussions were and will be used in
    - WEA identification
    - Impact analysis for full-scale wind energy projects (COP stage of the process)
    - Lease stipulations to reduce impacts to resources



# Routine Activities Analyzed in the Draft EA

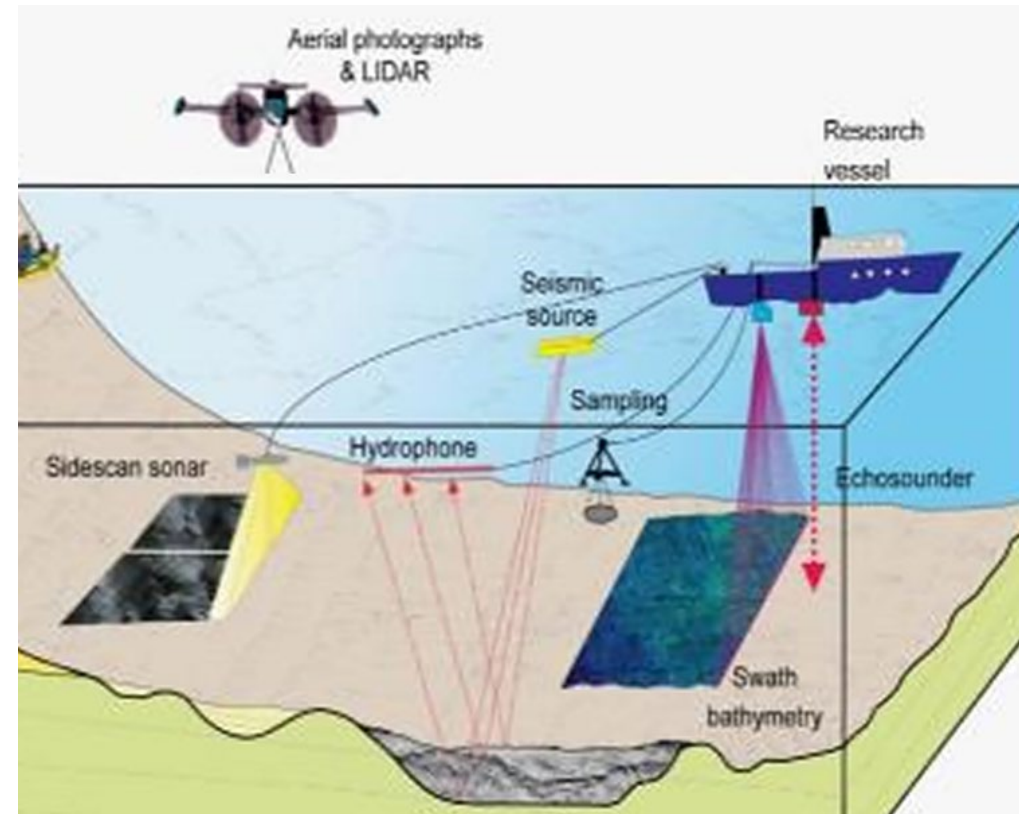
## Site Assessment

Temporary placement of meteorological buoys and oceanographic devices

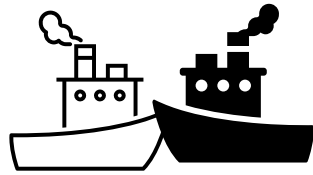


## Site Characterization

Geophysical surveys, geotechnical surveys, biological surveys, and archaeological surveys

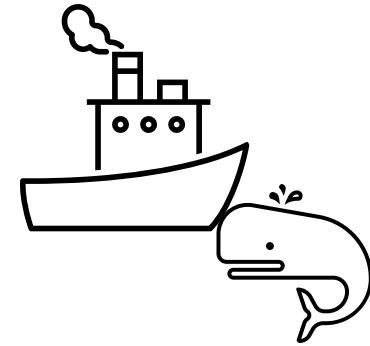


# Non-Routine Events Analyzed in the Draft EA



- **Strikes and Collisions**

- Vessel / Vessel and Vessel / Object
- Vessel / Animal
- Entanglement



- **Unintentional Releases into the Environment**

- Spills
- Trash and Debris



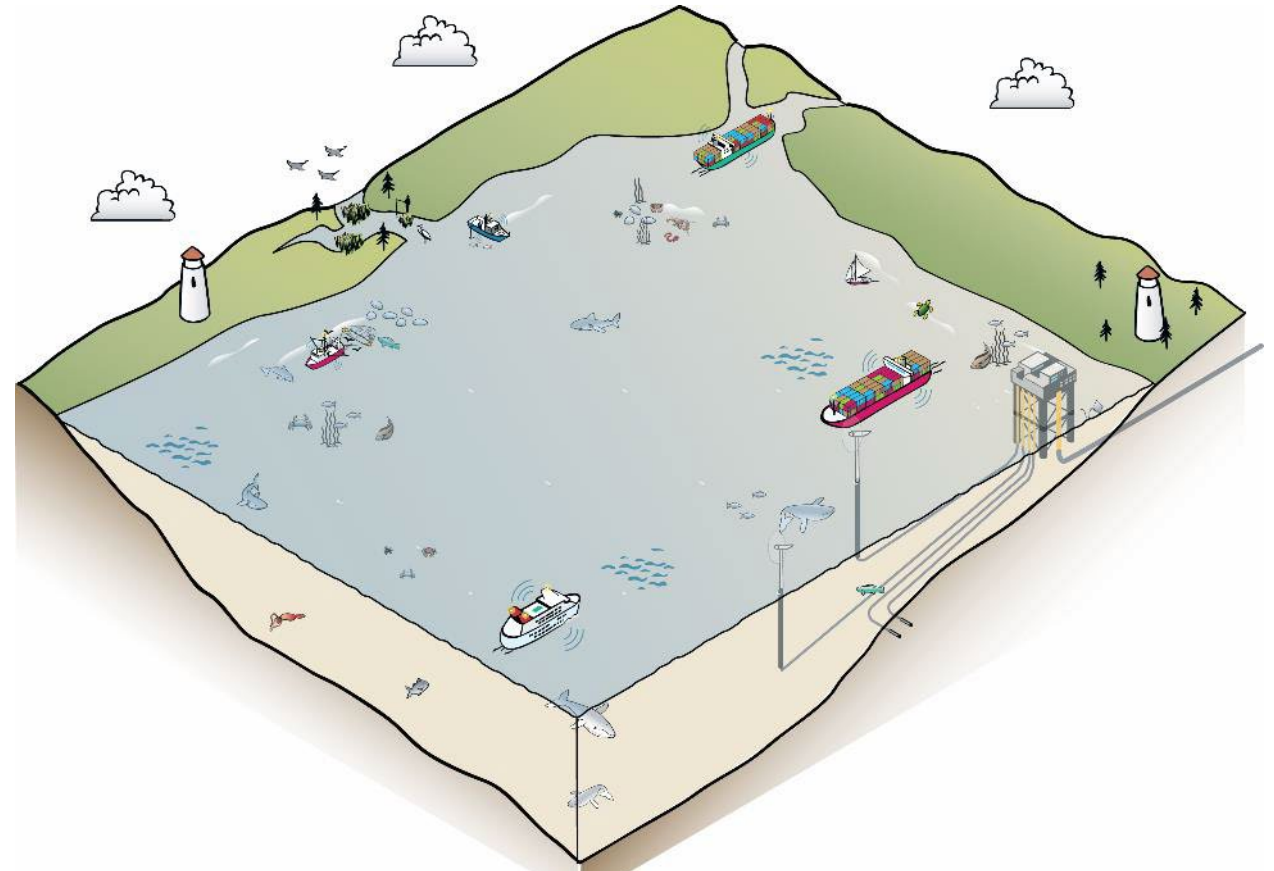
- **Response Activities**

- Spill Response
- Recovery of Lost Equipment



# Alternative A: No Action

- Under Alternative A, no wind energy leases would be issued, and site assessment activities would not occur within the GOM Call Area.
  - Other ongoing and future planned activities in the Gulf of Mexico would still occur.

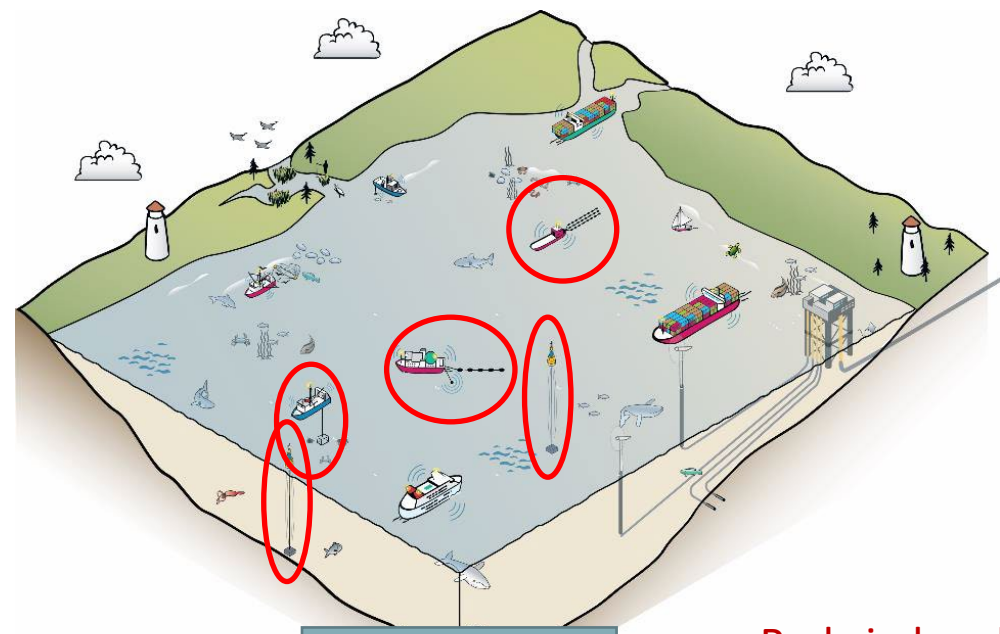
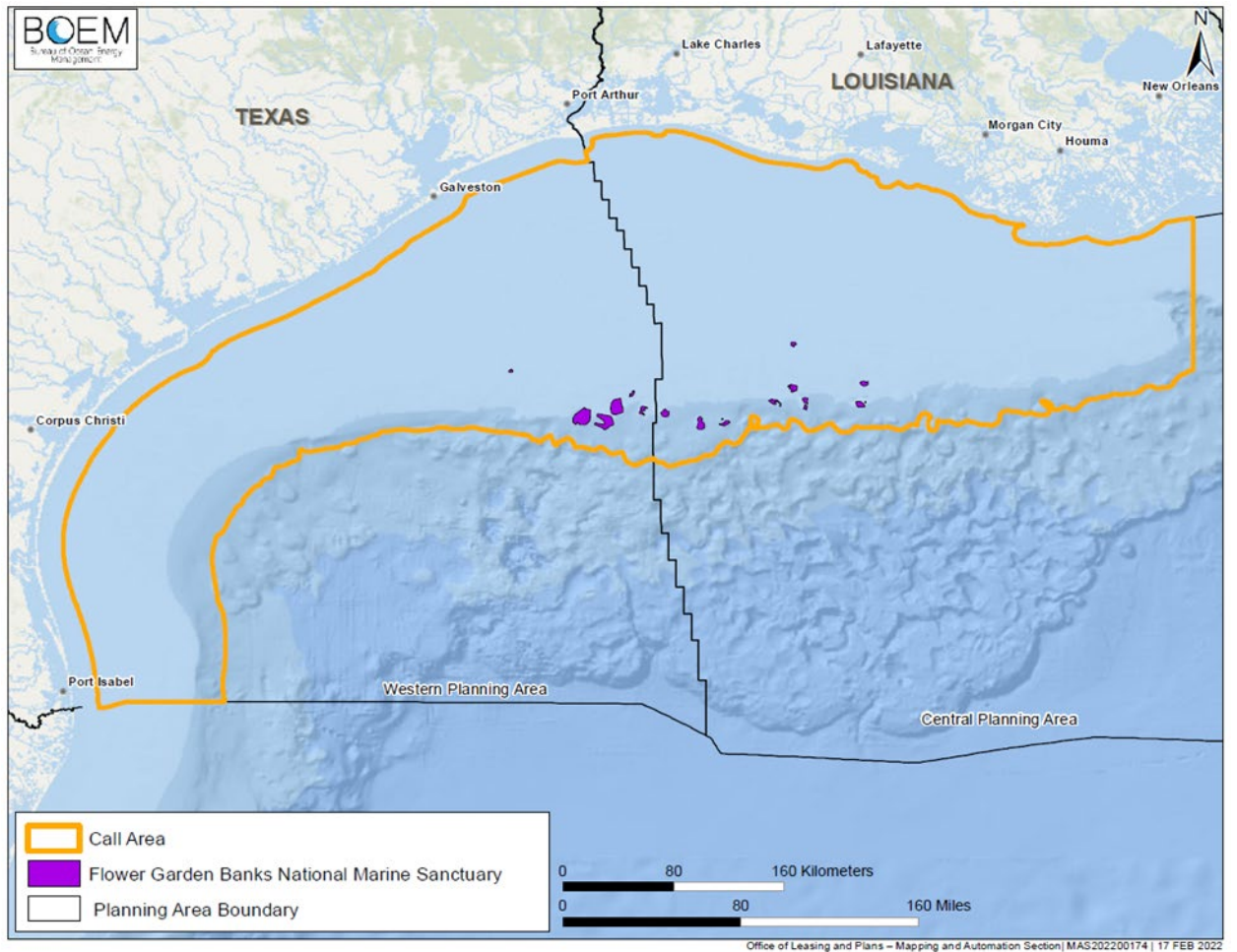


Alternative A: No Action



# Alternative B: OCS Wind Energy Lease Issuance in the GOM Call Area

- Alternative B would allow for lease issuance within the GOM Call Area.
- All available blocks within the GOM Call Area may be offered, with the exception of whole and partial blocks located within the Flower Garden Banks National Marine Sanctuary.

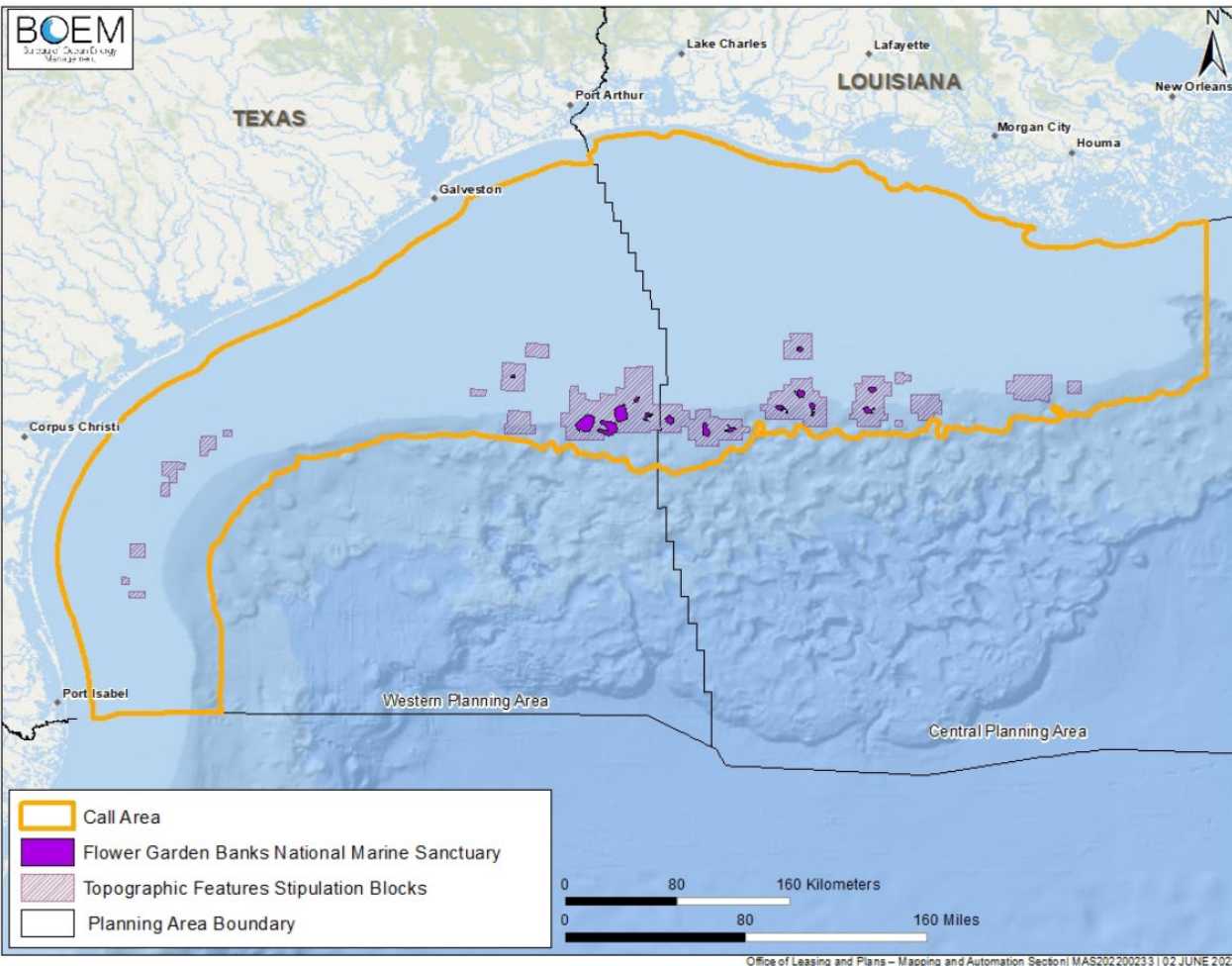


**Alternative B**

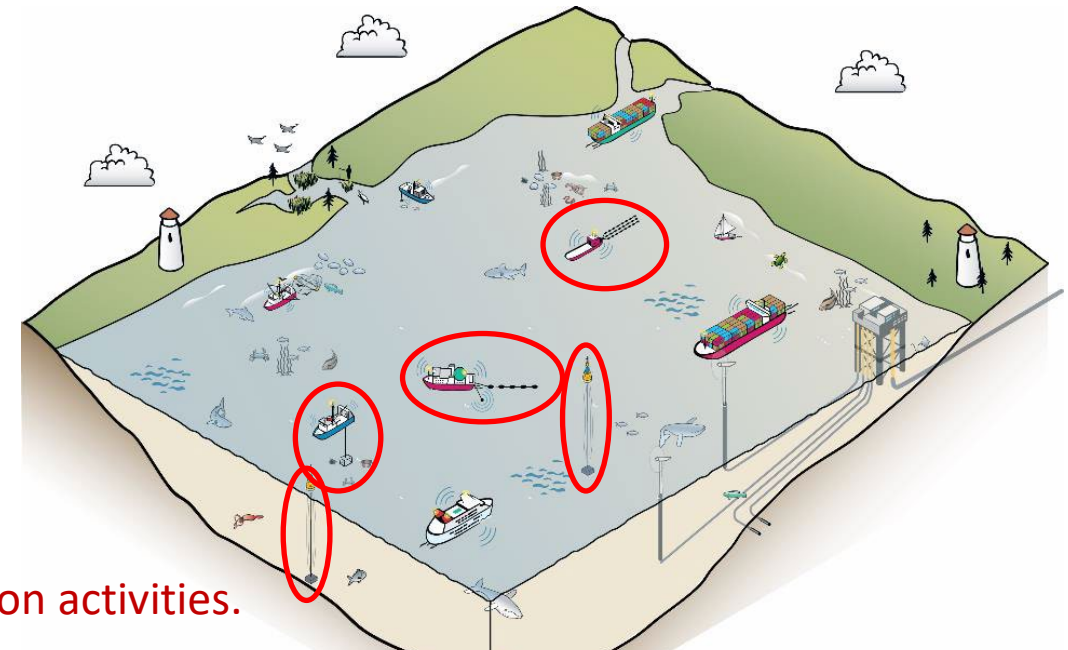
Red circles show site assessment and site characterization activities.



# Alternative C: OCS Wind Energy Lease Issuance in the GOM Call Area Excluding the Topographic Features Stipulation Blocks



- Alternative C would allow for lease issuance within the GOM Call Area, with the following exceptions:
  - whole and partial blocks located within the Flower Garden Banks National Marine Sanctuary; and
  - whole or partial Topographic Features Stipulation Blocks.



Red circles show site assessment and site characterization activities.

**Alternative C**



# Impact-Producing Factors (IPFs)

## IPFs Associated with the Proposed Action

- Air Emissions and Pollution
- Discharges and Waste
- Bottom Disturbance
- Noise
- Coastal Land Use/Modification
- Lighting and Visual Impacts
- Offshore Habitat Modification/Space Use
- Socioeconomic Changes and Drivers
- Unintended Releases into the Environment
- Response Activities
- Strikes and Collisions

## Classification Scheme for Potential Impacts

**Negligible**

**Minor**

**Moderate**

**Major**



# Resources Analyzed in this EA

- **Physical Resources**

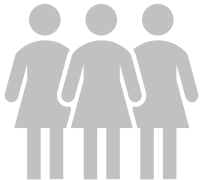
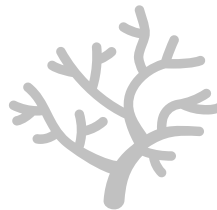
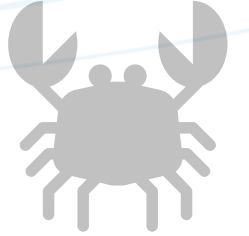
- Air Quality
- Water Quality

- **Biological Resources**

- Coastal Communities and Habitats
- Benthic Communities and Habitats
- Pelagic Communities and Habitats
- Fish and Invertebrates
- Birds
- Bats
- Marine Mammals
- Sea Turtles

- **Social Resources**

- Land Use and Coastal Infrastructure
- Commercial Fisheries
- Recreational Fishing
- Recreation
- Environmental Justice
- Demographics and Employment
- Cultural, Historic, and Archaeological Resources





# Resources Eliminated from Further Consideration

These resources are anticipated to have **Negligible** or less impacts:

- Water Quality
- Pelagic Communities and Habitats
- Birds
- Bats
- Land Use and Coastal Infrastructure
- Commercial Fisheries
- Recreational Fishing
- Recreation
- Environmental Justice
- Demographics and Employment

- **Reason Eliminated**

- Impacts from all site assessment and site characterization activities were determined to have no or negligible impacts on the resource because of the small size and scope of the Proposed Action in comparison to the cumulative impacts in the GOM.
  - True for both a single OCS wind energy lease and for 18 OCS wind energy leases
- Activities within the Proposed Action of this EA do not include the installation of meteorological (met) towers, as this technology is outdated.



# Resources Impacted by Proposed Action

These resources are anticipated to have **Minor** or greater impacts:

- Air Quality
- Coastal Communities and Habitats
- Benthic Communities and Habitats
- Fish and Invertebrates
- Marine Mammals
- Sea Turtles
- Cultural, Historical, and Archaeological Resources
- **IPFs Impacting Resources**
  - Air Emissions and Pollution
  - Bottom Disturbance
  - Noise
  - Strikes and Collisions
  - Unintentional Releases to the Environment

The application of protective measures can reduce or eliminate the potential impacts to some resources.



# Standard Operating Conditions (SOCs)

- Reduce or eliminate potential risks to, or conflicts with, some resources.
- This EA determines the impacts to resources from the Proposed Action both with and without the application of potential SOCs to help the decisionmaker determine which SOCs to apply to leases and plans.
- If chosen by the decisionmaker, SOCs will be detailed in the Final Sale Notice.
  - Lessees required to comply through lease stipulations and/or as conditions of a site assessment plan
  - Ensures the site characterization and site assessment activities are conducted in a safe and environmentally responsible manner
- BOEM is currently developing GOM-specific lease stipulations and SOCs through regulations and ongoing consultations with appropriate resource agencies.
- Consultations will be complete and SOCs developed before the Final Sale Notice is published.

## Mitigation Strategies

- Avoidance
- Survey shutdowns
- Visual monitoring



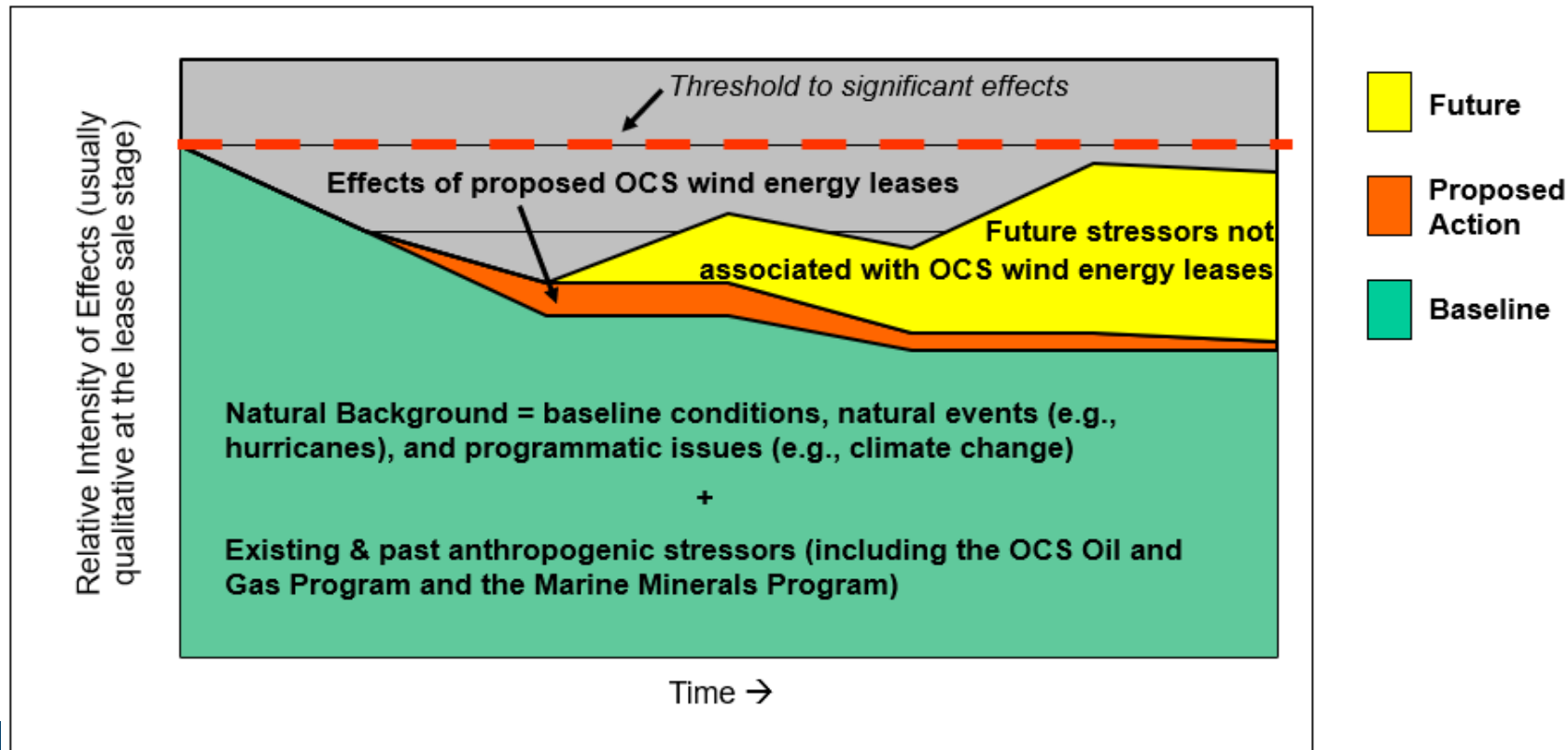
# Consultations

- **Endangered Species Act**
  - U.S. Fish & Wildlife Service
  - National Marine Fisheries Service
- **Magnuson-Stevens Fishery Conservation and Management Act**
  - National Marine Fisheries Service
- **Marine Mammal Protection Act**
  - National Marine Fisheries Service
- **Coastal Zone Management Act**
  - States of Texas, Louisiana, Mississippi, and Alabama
- **Government-to-Government Consultations with Federally Recognized Tribes**
  - Eleven Native American Tribes with historic and cultural ties to the Gulf of Mexico
- **National Historic Preservation Act (Section 106)**
  - Texas and Louisiana State Historic Preservation Offices
  - Advisory Council on Historic Preservation
  - Federally recognized Native American Tribes
  - Certified local governments, historical preservation societies, museums, and State-recognized Tribes



# Analysis Approach

- Analyzed the impacts of IPFs from site assessment and site characterization activities expected for a single OCS wind energy lease and for 18 OCS wind energy leases
- Compared impact levels of IPFs from site assessment and site characterization activities to the cumulative impacts of those same IPFs in the GOM
  - Cumulative impacts include the proposed action plus past, present, and reasonably foreseeable future activities in the GOM



# The Impacts of the Proposed Action under Alternatives B and C Without the Application of Protective Measures

## Magnitude of Potential Impact for Site Assessment and Site Characterization Activities

Range of Incremental Impacts for Site Characterization and Site Assessment Activities for a Single OCS Wind Energy Lease and 18 OCS Wind Energy Leases

Resource	IPFs Impacting Resource	Range of Impacts from All IPFs	Range of Incremental Contribution of Impacts from ALL IPFs Compared to Cumulative Impacts
Air Quality	Air Emissions and Pollution	Negligible to Minor	Negligible to Minor
Coastal Communities and Habitats	Bottom Disturbance	Negligible to Minor	Negligible
Benthic Communities and Habitats	Bottom Disturbance	Negligible to Minor	Negligible to Minor
Fish and Invertebrates	Bottom Disturbance Noise	Negligible to Minor	Negligible to Minor
Marine Mammals	Noise Strikes and Collisions	Moderate	Minor
Sea Turtles	Bottom Disturbance Noise	Negligible to	Negligible
	Strikes and Collisions Unintentional Releases to the Environment	Minor	
Cultural, Historic, and Archaeological Resources	Bottom Disturbance	Minor to	Minor to
		Major	Major

# The Impacts of the Proposed Action under Alternatives B and C With the Application of Protective Measures

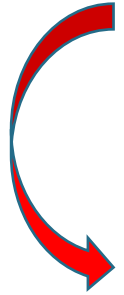
## Magnitude of Potential Impact for Site Assessment and Site Characterization Activities

Range of Incremental Impacts for Site Characterization and Site Assessment Activities for a Single OCS Wind Energy Lease and 18 OCS Wind Energy Leases

Resource	IPFs Impacting Resource	Range of Impacts from All IPFs	Range of Incremental Contribution of Impacts from ALL IPFs Compared to Cumulative Impacts
Air Quality	Air Emissions and Pollution	Negligible to Minor	Negligible to Minor
Coastal Communities and Habitats	Bottom Disturbance	Negligible to Minor	Negligible
Benthic Communities and Habitats	Bottom Disturbance	Negligible	Negligible
Fish and Invertebrates	Bottom Disturbance Noise	Negligible	Negligible
Marine Mammals	Noise Strikes and Collisions	Negligible to Minor	Negligible
Sea Turtles	Bottom Disturbance Noise Strikes and Collisions Unintentional Releases to the Environment	Negligible	Negligible
Cultural, Historic, and Archaeological Resources	Bottom Disturbance	Negligible	Negligible

# Schedule

We are here in the process (Comment Period)



Milestone	Dates
Published Draft EA	July 20, 2022
30-Day Comment Period Extension Request Granted	July 20 – August 19, 2022 September 2, 2022 (45-day period)
Publish Final EA	
Publish Final Sale Notice	Early 2023
Minimum 30-Day Waiting Period	
Sale Date	Early 2023





The background of the entire image is an underwater scene. The top half shows clear, deep blue water. The bottom half shows a sandy seabed with distinct, rhythmic ripples or sand dunes. The lighting is bright, creating a serene and clean aesthetic.

# BOEM

Bureau of Ocean Energy  
Management

[BOEM.gov](http://BOEM.gov)



# Clarifying Questions – Leasing Process and Draft EA



# Questions – Leasing, WEA ID, and Draft EA

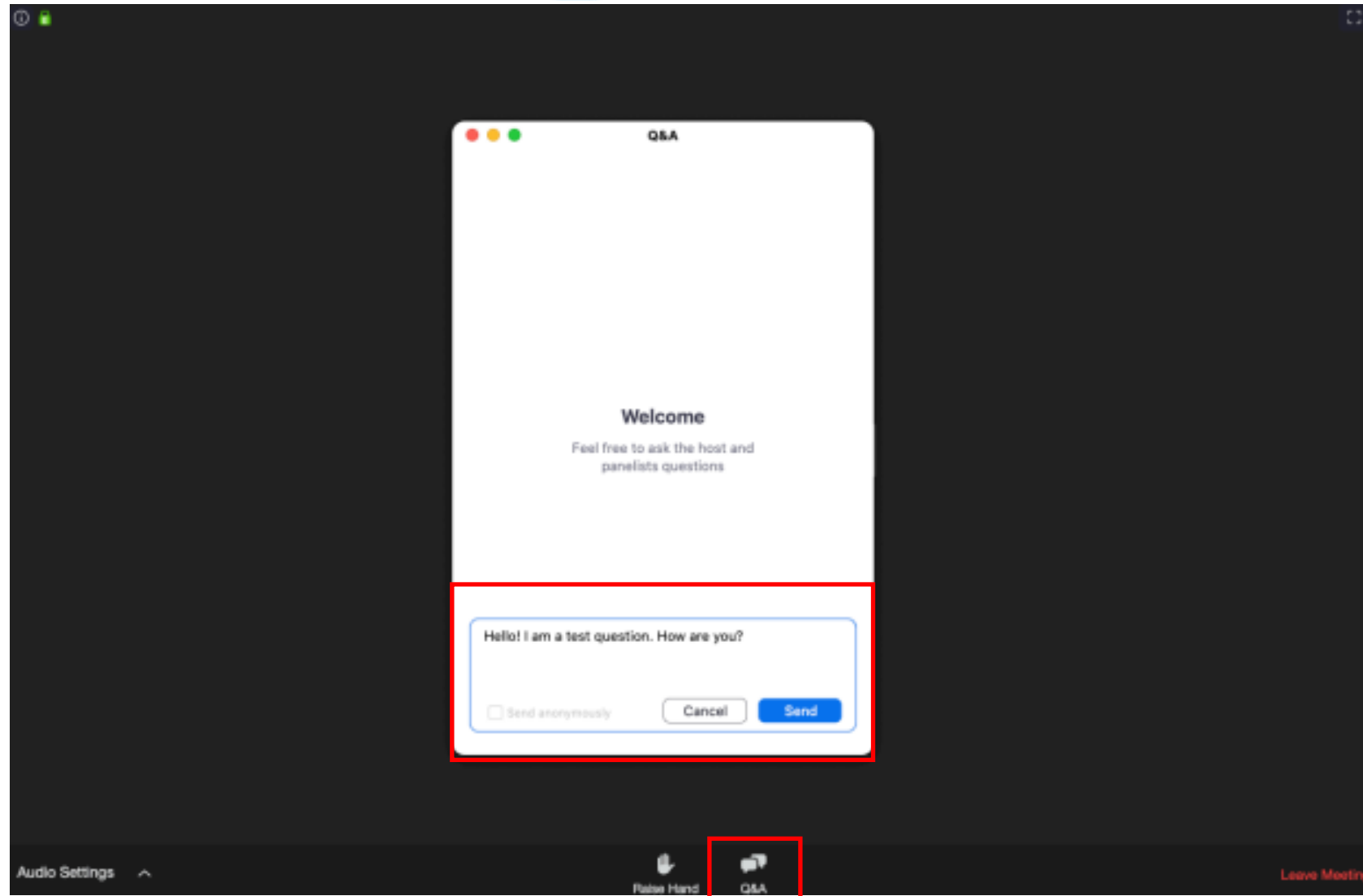
- The Q&A function will be open for questions related to the **Draft EA, Leasing, and Wind Area Identification processes.**
- BOEM will respond to questions relating to these topics. All other questions will be noted by BOEM but not responded to as part of this meeting.

*Public comment on the Draft EA will be received immediately following this question-and-answer session.*



# Using Zoom Q&A

- Only use the Q&A feature during the “*Clarifying Process Questions*” portion of the meeting.
- If you have a question, select the “Q&A” icon.
- Type your question in the blue rectangle and select “Send”.
- For those on the phone, use \*9 to raise your hand. The moderators will call on you by announcing the last four digits of your phone number and unmute you.



# Public Comment Opportunity - Comments on the Draft EA





## At this meeting

Public Comment is next...

## Online

Go to: [Regulations.gov](https://www.regulations.gov)

Search for:  
BOEM-2021-0092

**Comments are due by September 2, 2022.**



# In-Meeting Public Comment Process

- **This oral testimony is for the Draft EA only.**
  - Comments on the Wind Energy Areas are not being collected during this meeting.
- **Pre-registered public comments will be taken first.**
- **To enter the discussion queue:**
  - Click the “raise hand” icon in the top of the webinar window; click again to lower your hand after speaking.
- **The facilitator will call on you when it is your turn to speak. You will then be unmuted.**
  - If you are a phone call-in user, dial \*9 on your phone to Speak in order; facilitator will mind the queue.
- **Provide your name and affiliation before you speak.**
- **Public comment will be recorded (3 minutes)**
- **Please be respectful of everyone’s time and opportunity to speak.**



# What comments are we seeking?

The Draft Environmental Assessment is a comprehensive review of impacts associated with **lease issuance** and expected future **site assessment and site characterization activities by the lessee.**

- Is the information accurately presented?
- Should new information relevant to the analysis be included?
- Are the potential impacts accurately described?
- Are the methodologies and assumptions correct?
- Is there any information that may change the conclusions?
- Where is clarification needed?

BOEM is  
Asking for  
Comments  
on the  
Content of  
the Draft EA

Comment period ends **September 2, 2022.**





# Next Steps



# Next Steps Continued

- Publish Area Identification (ID) Memo
- Identify lease areas and auction format
- Publish Proposed Sale Notice (PSN)
  - Publish Final EA
- Publish Final Sale Notice (FSN)
  - Hold a proposed lease sale



# Media Inquiries

For media inquiries, please contact the Office of Communications:

- John Filostrat - [john.filostrat@boem.gov](mailto:john.filostrat@boem.gov) or 504-284-8605
  - Hillary McKey - [hillary.mckey@boem.gov](mailto:hillary.mckey@boem.gov)



# Closing Remarks





- This meeting is now adjourned. You can provide comments in the following way by **September 2, 2022**.
- Visit the [BOEM webpage](#) for more information:

<https://www.boem.gov/renewable-energy/state-activities/gulf-mexico-draft-ea>

## Online

Go to: Regulations.gov

Search for:

BOEM-2021-0092

