

Good morning!

The Fourth BOEM Gulf of Mexico Intergovernmental Renewable Energy Task Force Meeting will begin at 9am CT.

If you are encountering any technical issues, please contact [support@kearnswest.com](mailto:support@kearnswest.com).





**BOEM** Bureau of  
Ocean Energy Management

**BOEM Gulf of Mexico  
Intergovernmental Renewable Energy Task Force Meeting**

---

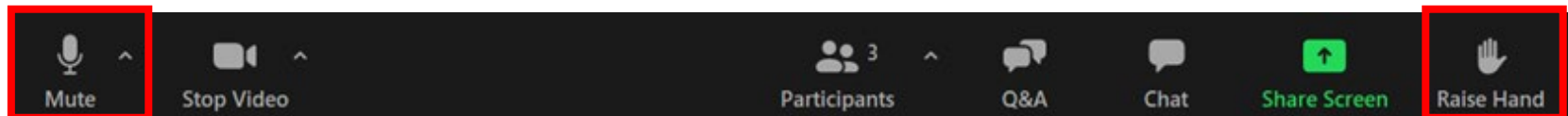
**April 11, 2023**

## Welcome & Opening Remarks

Dr. James Kendall, Regional Director  
*BOEM Gulf of Mexico Region*

# Webinar Instructions – Task Force Members

- Click the mute button in the bottom toolbar to mute yourself when not speaking. If you are calling into the meeting using a phone, dial \*6 on your keypad to unmute yourself.
- To enter the discussion, use the “raised hand” icon on the taskbar or add a comment in the chat pod. If you are calling into the meeting using a phone, dial \*9 on your keypad to raise your hand.
- Please direct any technical questions to the facilitation team using the “chat” function.



# Webinar Instructions – Members of the Public

- Members of the public will be muted throughout the Task Force meeting and will not be able to unmute themselves.
- Members of the public will have the opportunity to share comments during the public input opportunity. More guidance will be shared later in the meeting.
- The chat function is not available. Please direct any technical issues during the Task Force meeting using the Q&A function or email the facilitation team at [support@kearnswest.com](mailto:support@kearnswest.com).



# Webinar Instructions – Members of the Public

*Please note, this meeting is being recorded.*



# Meeting Objectives

- Overall purpose: Facilitate coordination and consultation among federal, state, local, and tribal governments regarding offshore wind energy and the renewable energy leasing process on the Outer Continental Shelf (OCS) in the Gulf of Mexico (GOM).
- Provide an overview and seek in-depth feedback on the Proposed Sale Notice and related auction format.
- Provide opportunities for public input on the topics being considered by the Task Force.



# Agenda

Time (CT)	Agenda Item
9:00 a.m.	Welcome & Opening Remarks
9:10 a.m.	Task Force Meeting Objectives
9:25 a.m.	Presentation of the Gulf of Mexico (GOM) Renewable Energy Proposed Sale Notice; Outer Continental Shelf Wind Energy Leasing in the GOM – Auction Format and Lease Terms
10:00 a.m.	Task Force – Questions and Comments on the Proposed Sale Notice
10:35 a.m.	<i>Break</i>
10:50 a.m.	Task Force Updates
11:50 a.m.	Next Steps and Closing Remarks
11:55 a.m.	Task Force Meeting Adjourns
12:00 p.m.	Public Input Opportunity
1:00 p.m.	<i>Adjourn</i>





# Introductions

# BOEM Conveners

Liz Klein, Director

Walter Cruickshank, Deputy Director

## Office of Regional Director

- James Kendall, Regional Director
- Laura Robbins, Deputy Regional Director
- Lissa Lyncker, Chief of Staff

## Office of Leasing and Plans

- Bernadette Thomas, Regional Supervisor
- Bridgette Duplantis, Chief, Leasing and Financial Responsibility Section
- Idrissa Boube, Program Analyst and GOM Task Force Coordinator, Leasing and Financial Responsibility Section
- Renee Bigner, Program Analyst, Leasing and Financial Responsibility Section

## Public Affairs Office

- John Filostrat
- Hillary McKey

## Office of Environment

- Arie Kaller, Regional Supervisor
- Helen Rucker, Section Chief
- Ross Del Rio, NEPA Coordinator
- Michelle Nannen, NEPA Coordinator
- Mark Belter, Section Chief
- Kate Segarra, Supervisor
- Doug Jones, Tribal Liaison
- Mariana Steen, Fisheries Biologist

## Office of the Solicitor

- Pedro Melendez-Arreaga, Lead Solicitor
- Robert Sebastian, Solicitor

## Resource Evaluation

- Chris DuFore, Geophysicist

## Office of Renewable Energy

- Karen Baker, Program Manager
- Marilyn Sauls, Branch Chief
- David MacDuffee, Branch Chief



# Introductions – Elected Officials & Representatives

- U.S. House of Representatives, Office of Congressman Clay Higgins (LA-03)
- U.S. House of Representatives, Office of Congressman Garret Graves (LA-06)
- U.S. House of Representatives, Office of Congressman Steve Scalise (LA-01)
- U.S. Senate, Office of Senator Bill Cassidy
- U.S. Senate, Office of Senator John Kennedy



# Introductions – Tribal Nations

- Chitimatcha Tribe of Louisiana
- Coushatta Tribe
- Jena Band of Choctaw Indians
- Tunica-Biloxi Tribe of Louisiana



# Introductions – States

## State of Alabama

- Alabama Department of Conservation and Natural Resources (ADCNR)
- Alabama Department of Environmental Management (ADEM)

## State of Louisiana

- Breazeale Sachse & Wilson
- Center for Planning Excellence
- Coastal Protection and Restoration Authority (CPRA)
- Department of Natural Resources (DNR)
- Entergy Louisiana
- Foundation for Louisiana
- Louisiana Chemical Association
- Louisiana Department of Agriculture and Forestry
- Louisiana Department of Environmental Quality (DEQ)
- Louisiana Department of Natural Resources (DNR)
- Louisiana Department of Transportation and Development (DOTD)
- Louisiana Department of Wildlife and Fisheries (LDWF)

## State of Louisiana (cont.)

- Louisiana Division of Administration, Office of Facility Planning and Control
- Louisiana Division of Administration, Office of Fisheries
- Louisiana Division of Administration, Office of State Lands
- Louisiana Economic Development (LED)
- Louisiana Governor's Office of Coastal Activities
- Louisiana Governor's Office of Indian Affairs
- Louisiana Oil Spill Coordinator's Office (LOSCO)
- Louisiana Public Service Commission
- Louisiana State Legislature
- Office of Cultural Development, Division of Historic Preservation
- Office of Indian Affairs

## State of Mississippi

- Mississippi Department of Environmental Quality (MDEQ)
- Mississippi Department of Marine Resources (MDMR)
- Mississippi Development Authority (MDA)
- Mississippi Military Communities Council
- Mississippi State Department of Health (MSDH)
- Office of Mississippi Governor Tate Reeves
- The Port of Gulfport

## State of Texas

- Texas General Land Office (GLO)
- Texas Parks and Wildlife (TPWD)



# Introductions – Local Governments

- Calcasieu Parish
- Cameron Parish
- Cameron Parish Port
- City of New Orleans
- Greater Lafourche Port (Port Fourchon)
- Gulf Coast Center for Law & Policy
- Jefferson Parish
- Lafourche Parish
- Loyola University New Orleans
- New Orleans City Council
- Plaquemines Parish
- Port of Lake Charles
- Port of New Orleans
- St. Bernard Parish
- St. Mary Parish
- Terrebone Parish
- The Nature Conservancy of Louisiana
- University of Louisiana at Lafayette
- Vermilion Parish



# Introductions – Federal Agencies

- Advisory Council on Historic Preservation (ACHP)
- Bureau of Indian Affairs (BIA)
- Bureau of Safety and Environmental Enforcement (BSEE)
- Environmental Protection Agency (EPA)
- Federal Energy Regulatory Commission (FERC)
- Federal Permitting Improvement Steering Council (FPISC)
- Marine Mammal Commission (MMC)
- National Oceanic and Atmospheric Administration (NOAA)
- National Park Service (NPS)
- National Renewable Energy Laboratory (NREL)
- Small Business Administration (SBA)
- U.S. Army Corps of Engineers (USACE)
- U.S. Coast Guard (USCG)
- U.S. Department of Defense (DOD)
- U.S. Department of Energy (DOE)
- U.S. Fish and Wildlife Service (FWS)
- U.S. Geological Survey (USGS)
- U.S. Department of Transportation (USDOT)



# Task Force Meeting Process Guidelines

- “Honor” the agenda.
- Participate respectfully.
- Speak in order; facilitator will mind the queue.
- Provide name/affiliation each time you speak.
- Please mute yourself when not speaking.
- Participating on video for Task Force members is encouraged.







**BOEM** Bureau of  
Ocean Energy Management

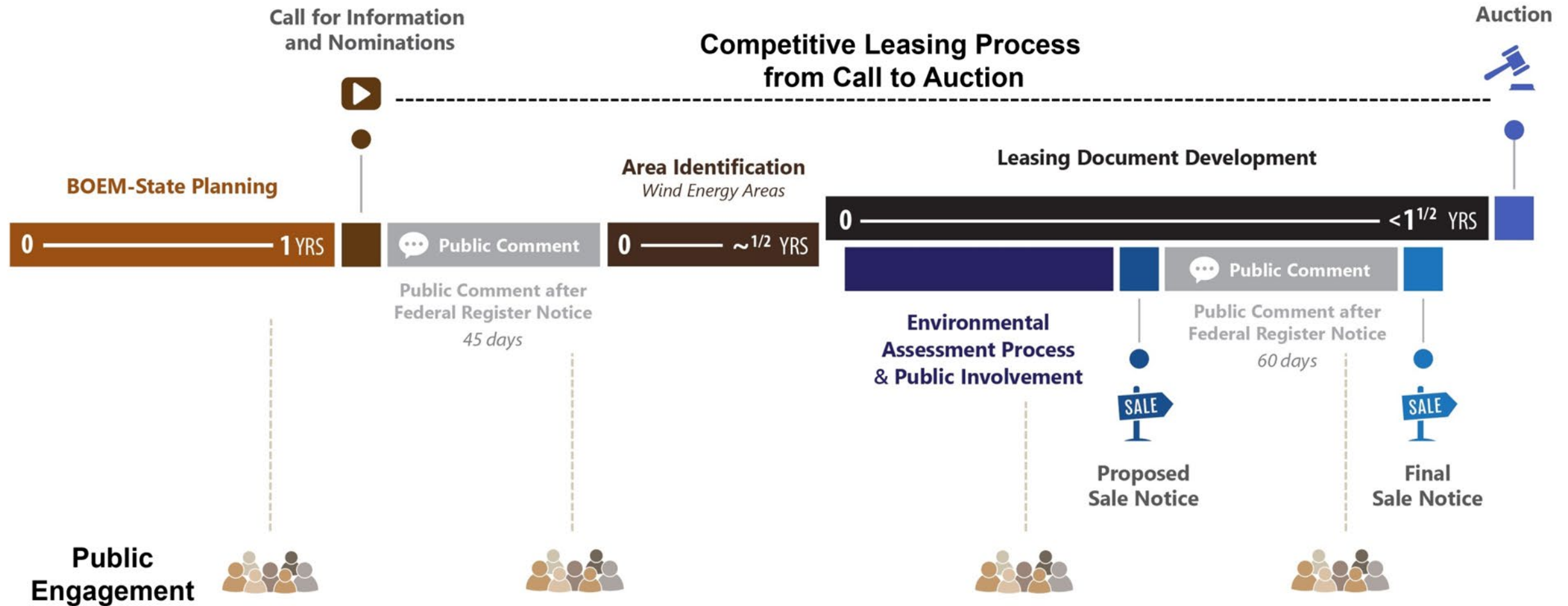
# Presentation of the GOM Renewable Energy Proposed Sale Notice (PSN)

---

April 11, 2023

Idrissa Boube, Program Analyst and GOM Task Force Coordinator, Leasing and Financial Responsibility Section, BOEM  
Marty Heinze, Chief, Leasing Economics Coordination Branch, Office of Strategic Resources, BOEM

# GOM Offshore Wind Energy Planning and Leasing Process



# Pre-Lease Sale Process: Proposed Sale Notice

## What is in a PSN?

- Area for leasing
- Fiscal terms
- Auction details and format
- Proposed lease terms
- Last opportunity to submit company qualification materials
  - Legal
  - Technical
  - Financial
- Nonmonetary factors

## Auction Seminar for potential bidders



# Proposed Sale Notice (PSN)

Published in the Federal Register on February 24, 2023

- [www.federalregister.gov](http://www.federalregister.gov), Docket No. BOEM-2023-0021

The PSN describes:

- 3 proposed areas that could be available for leasing
- Proposed conditions and stipulations of a lease
- Bidding credits that could be available to qualified bidders
- Proposed auction format and procedures
- Specific questions on which BOEM is seeking feedback
- Process for issuing a lease

60-day public comment period ends April 25, 2023

- [www.regulations.gov](http://www.regulations.gov), Docket ID BOEM-2023-0021



# PSN Package Contents

Proposed Sale Notice

Louisiana Coast Region Proposed Leases (1)

- GOM Proposed Lease OCS-G 37334

Texas Coast Region Proposed Leases (2)

- GOM Proposed Lease OCS-G 37335
- GOM Proposed Lease OCS-G 37336

Overview Map of the GOM Proposed Lease Areas

GOM Proposed Lease Areas Shapefiles

Bidder's Financial Form

Bidder's Financial Form Addendum

Qualifications Guidelines

EFT Payment Instructions

All are available on BOEM GOM Activities webpage:

<https://www.boem.gov/renewable-energy/state-activities/gulf-mexico-activities>



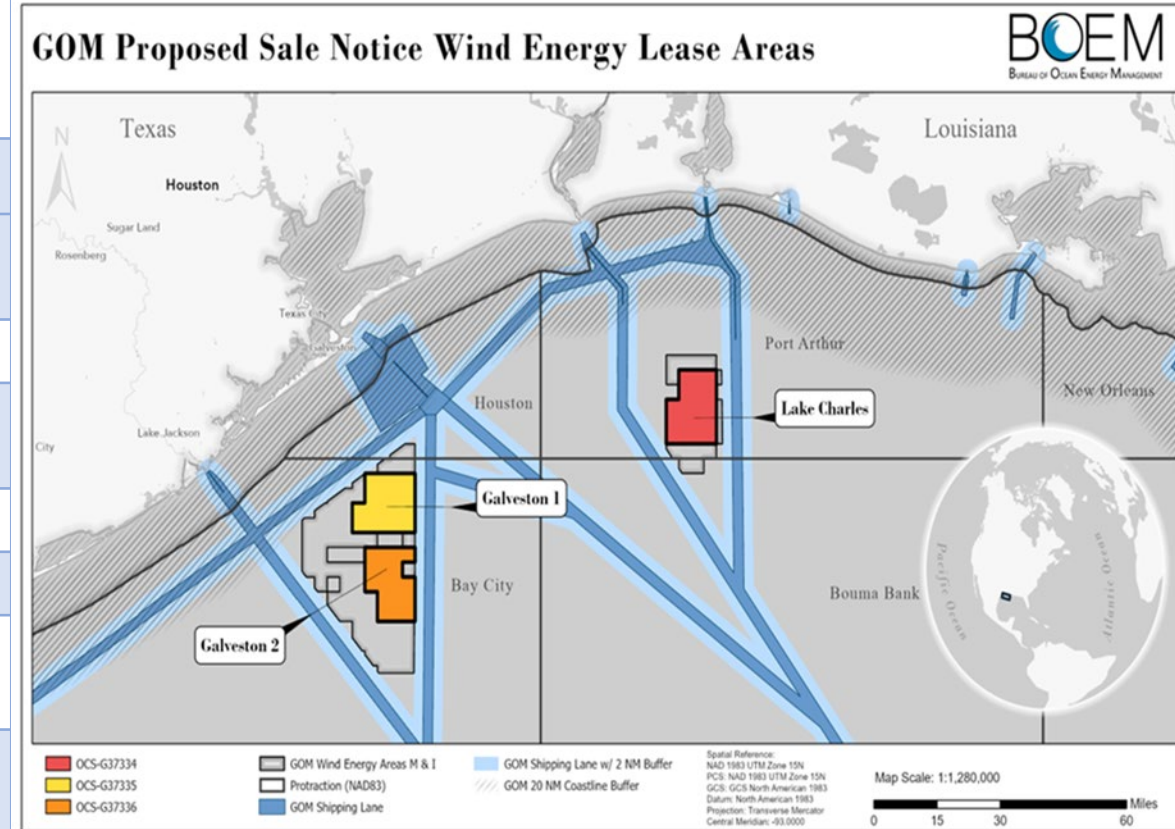
# Proposed Lease Areas

	OCS-G 37335 (Galveston I)	OCS-G 37336 (Galveston II)	OCS-G 37334 (Lake Charles)	Total
Acres	102,480	96,786	102,480	301,746
Installation Capacity (MW) <sup>[1]</sup>	1,244	1,175	1,244	3,663
Homes powered <sup>[2]</sup>	435,400	411,250	435,400	1,282,050
Power Production (MWh/yr) <sup>[3]</sup>	4,358,976	4,117,200	4,358,976	12,835,152
Max Depth (meters[m])	36	36	25	--
Min Depth (m)	16	16	10	--
Closest distance to TX (nautical mile [nmi])	28	39	79	--
Closest distance to LA(nmi)	--	--	38	--

[1] Megawatts (MW) based upon 3MW/sqkm

[2] Based upon 350 homes per MW

[3] Formula = Capacity (MW) \* 8760 (hrs/yr) \* 0.4 (capacity factor)

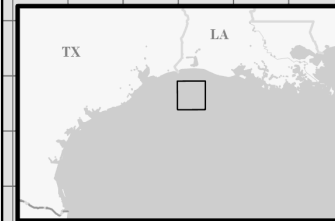


# OCS-G 37334 Lake Charles

## Description of the Proposed Lease Area

- The total acreage of the Proposed Lease Area is approximately 102,480 acres.
- The proposed Lease Area of Lake Charles comprises approximately 54% of the Louisiana Coast Region of the WEA M.

6604	6605	6606	6607	6608	6609	6610	6611	6612	6613	6614	6615	6616	6617	6618	6619	6620
6654	6655	6656	6657	6658	6659	6660	6661	6662	6663	6664	6665	6666	6667	6668	6669	6670
6704	6705	6706	6707	6708	6709	6710	6711	6712	6713	6714	6715	6716	6717	6718	6719	6720
6754	6755	6756	6757	6758	6759	6760	6761	6762	6763	6764	6765	6766	6767	6768	6769	6770
6804	6805	6806	6807	6808	6809	6810	6811	6812	6813	6814	6815	6816	6817	6818	6819	6820
6854	6855	6856	6857	6858	6859	6860	6861	6862	6863	6864	6865	6866	6867	6868	6869	6870
6904	6905	6906	6907	6908	6909	6910	6911	6912	6913	6914	6915	6916	6917	6918	6919	6920
6954	6955	6956	6957	6958	6959	6960	6961	6962	6963	6964	6965	6966	6967	6968	6969	6970
7004	7005	7006	7007	7008	7009	7010	7011	7012	7013	7014	7015	7016	7017	7018	7019	7020
7054	7055	7056	7057	7058	7059	7060	7061	7062	7063	7064	7065	7066	7067	7068	7069	7070
7104	7105	7106	7107	7108	7109	7110	7111	7112	7113	7114	7115	7116	7117	7118	7119	7120
6004	6005	6006	6007	6008	6009	6010	6011	6012	6013	6014	6015	6016	6017	6018	6019	6020
6054	6055	6056	6057	6058	6059	6060	6061	6062	6063	6064	6065	6066	6067	6068	6069	6070
6104	6105	6106	6107	6108	6109	6110	6111	6112	6113	6114	6115	6116	6117	6118	6119	6120
						6160	6161	6162	6163	6164	6165	6166	6167	6168	6169	6170
						6210	6211	6212	6213	6214	6215	6216	6217	6218	6219	6220
						6260	6261	6262	6263	6264	6265	6266	6267	6268	6269	6270
						6310	6311	6312	6313	6314	6315	6316	6317	6318	6319	6320



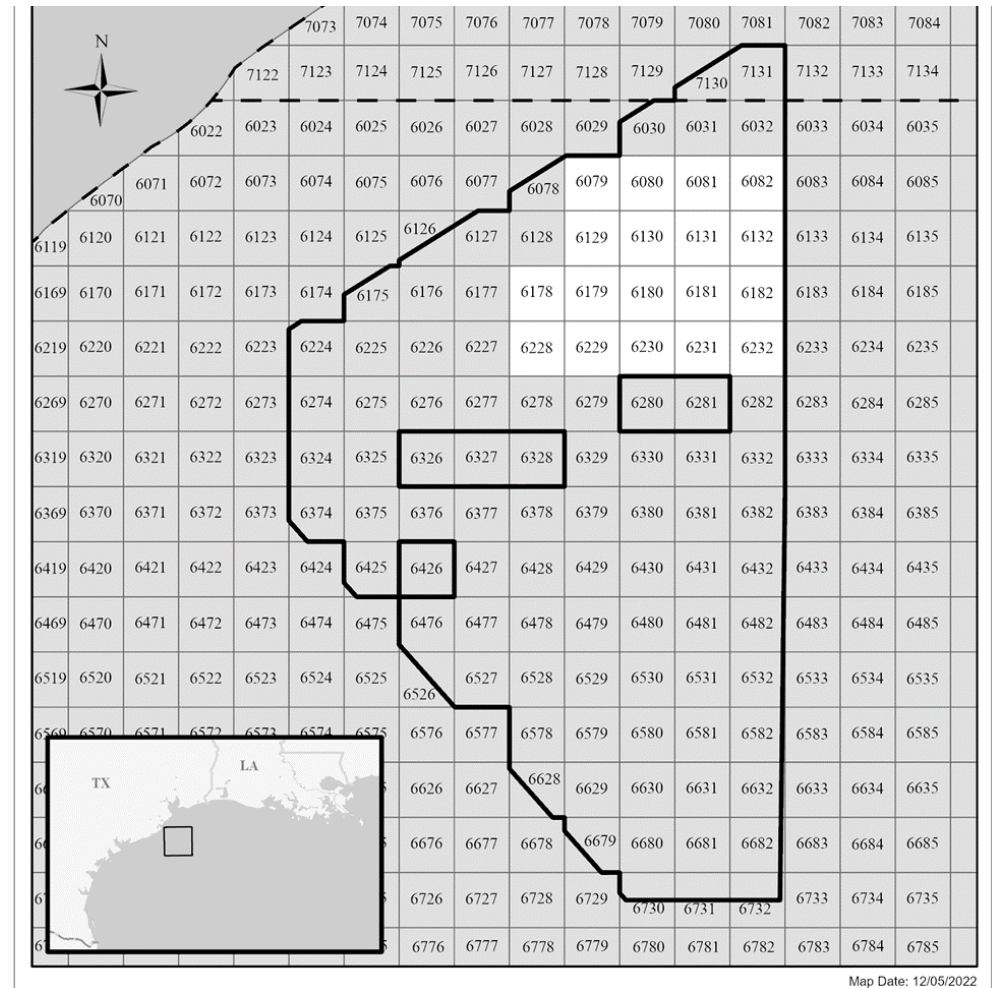
Map Date: 12/05/2022



# OCS-G 37335 Galveston I

## Description of the Proposed Lease Area

- The total acreage of the Proposed Lease Area is approximately 102,480 acres.
- Galveston I and Galveston II comprise approximately 36% of the Texas Coast Region of the WEA I.
- Significant Sediment Resource Areas (SSRAs)

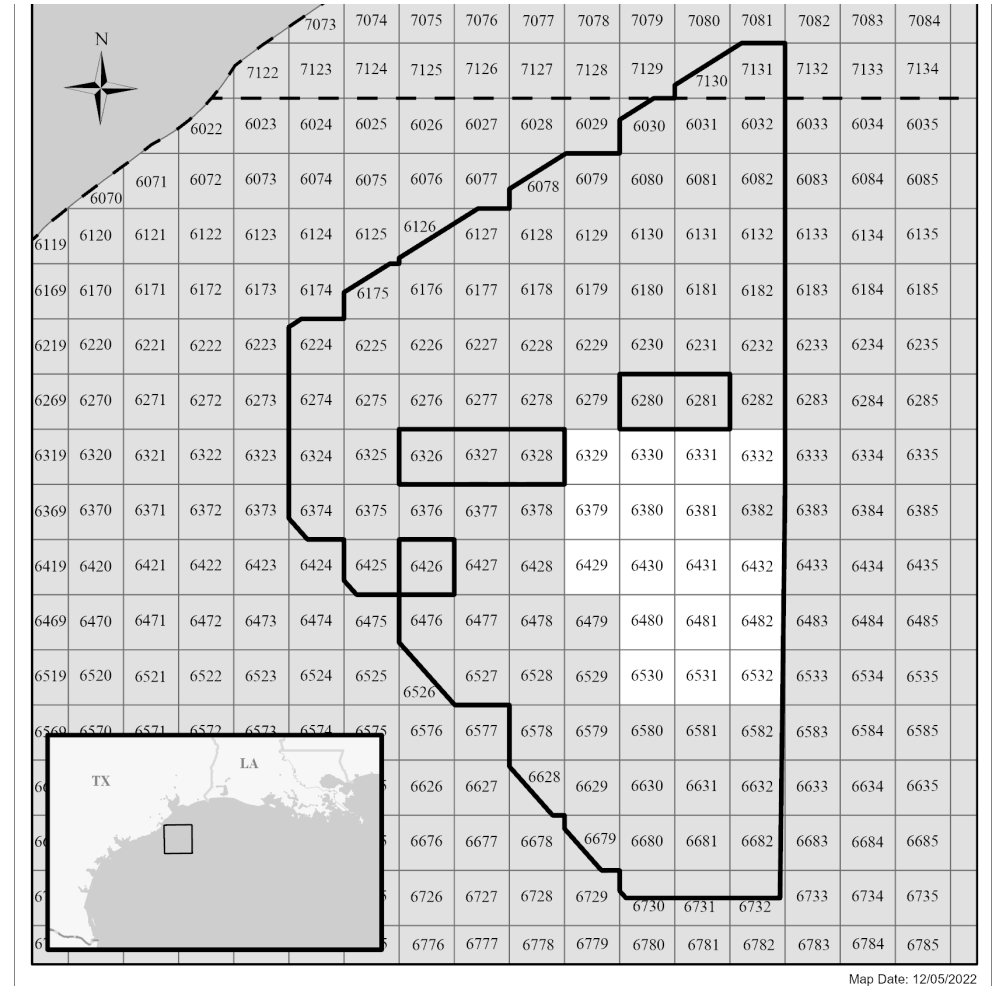




# OCS-G 37336 Galveston II

## Description of the Proposed Lease Area

- The total acreage of the leased area is approximately 96,786 acres.
- Galveston I and Galveston II comprise approximately 36% of the Texas Coast Region of the WEA I.



# Proposed Bidding Credits

## Multi-factor auction format: ascending bidding with a combined cash and bidding credit as the bid variable

- 20 percent non-monetary bid credit for a Contribution to workforce training and supply chain development (same provisions as California without floating wind emphasis).
- 10 percent non-monetary bid credit for a Contribution to a GOM Fisheries Mitigation Fund.
  - Fund is proposed to be regional in scope and BOEM expects funds will be available to compensate fishing mitigations in future lease areas where greater fishing conflicts are expected.
  - Promote participation of fishers and fishing communities in the project development process
  - Promote research into the coexistence of multiple ocean industries
  - Offset the cost of gear upgrades and transitions for operating within a wind farm

**Bid credit commitment and provisional auction results reviewed and certified by 3 person BOEM panel with an SOL attorney advisor.**



# Proposed Auction Format and Request for Feedback

- If three lease areas are offered and a bidder is allowed to win a lease in both the Galveston and Lake Charles areas, BOEM may hold two simultaneous auctions
- If only two lease areas are offered, BOEM is proposing a single auction
- Auction is the traditional ascending clock auction used in recent OCS wind leases
- Request for Feedback
  - Should BOEM hold a single auction and offer all lease areas?
  - Or two simultaneous auctions and allow bidders to win one lease each in the Galveston and Lake Charles areas?



# Lease Summary

**Rights of the Lessee:** to submit to BOEM for approval a Site Assessment Plan (SAP) and Construction and Operations Plan (COP) for a wind energy project. A lease does not, by itself, authorize any activity within the leased area.

- Plans are subject to subsequent environmental, technical, and public reviews prior to BOEM decision on whether to approve the Plans.
- BOEM can approve, approve with modifications, or not approve an SAP or COP.

**Terms:** Preliminary Term (1 year), Site Assessment Term (5 years), Operations Term (33 years)

**Payments:** Rent and Operating Fees

**Financial Assurance:** Lessee must provide and maintain financial assurance to meet all accrued lease obligations.

- Initial Financial Assurance: \$100,000 due before lease issuance
- Additional Financial Assurance: associated with the SAP, COP, and anticipated decommissioning costs, amounts determined by BOEM

**Lease-specific terms, conditions, and stipulations:** Addendum C



# Selected Lease-Specific Terms, Conditions, and Stipulations

“The Lessor reserves the right to impose additional terms and conditions incident to the future approval or approval with modifications of plans” (Addendum C)

## These terms could include:

- Site Characterization Activities
- Engagement and Reporting
- Communications Plans
- Commercial Fisheries
- Archaeological Surveys
- Project Labor Agreements
- National security and military operations
- Marine trash and debris prevention
- Site access by BOEM for research purposes



# Selected Lease-Specific Terms, Conditions, and Stipulations

## Additional conditions to be included in final leases

- Protective measures for biological surveys
- Protective measures for geological and geophysical surveys

## BOEM Request for Feedback:

- Number, size, orientation, and location of the proposed lease areas
- Engaging underserved communities
- Bidding credits
- Limits on the number of lease areas per bidder
- Definition of “affiliated entities”
- Engagement and reporting
- Project layout considerations
- Measures to facilitate vessel transit

# BOEM Activities

- **June 11, 2021:** Request for Interest (RFI) published in the Federal Register.
- **June 15, 2021:** BOEM GOM Inaugural Intergovernmental Renewable Task Force Meeting to present and gather information.
- **July 26, 2021:** Comment Period for the RFI Closed.
  - BOEM received 39 RFI comments.
- **November 1, 2021:** BOEM published the Call for Information and Nominations (Call) in the Federal Register. Docket Number BOEM-2021-0077.
- **December 16, 2021:** Comment Period for the Call Closed.
- **BOEM received 40 Call comments.**
- **January 19 and 20, 2022:** Fisheries Summit
- **February 2, 2022:** Held 2<sup>nd</sup> GOM Intergovernmental Renewable Task Force Meeting
- **July 20, 2022:** Draft Environmental Assessment Published. Comment period closed September 2, 2022
  - BOEM received 107 Draft WEA comments.
- **July 27, 2022:** Held 3<sup>rd</sup> GOM Intergovernmental Renewable Task Force Meeting
- **October 31, 2022:** Final Wind Energy Areas Published.
- **February 24, 2023:** Proposed Sale Notice Published. Comment period closes April 25, 2023.





# BOEM

Bureau of Ocean Energy  
Management

[BOEM.gov](http://BOEM.gov)



Idrissa Boube | [Idrissa.Boube@boem.gov](mailto:Idrissa.Boube@boem.gov)



**BOEM** Bureau of  
Ocean Energy Management

# Auction Process

---

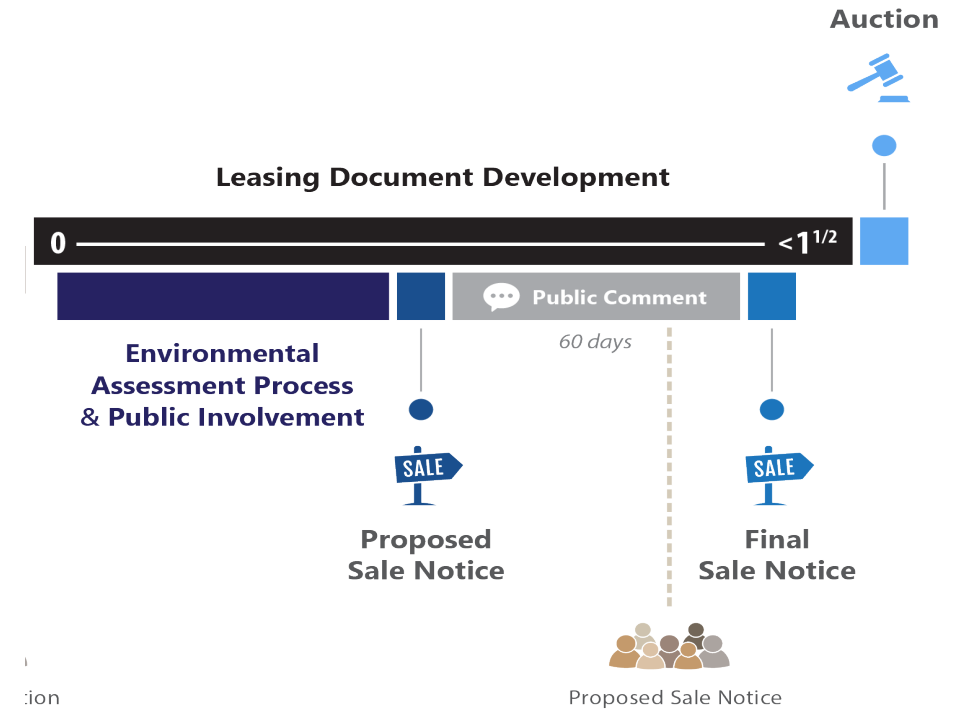
**GOMW-1: Gulf of Mexico Lease Sale**

April 11, 2023

Josh Gange, Office of Renewable Energy Programs, BOEM

# Proposed Sale Notice

- Published February 24, 2023
  - 60 Day Comment Period
  - Accepting and Processing New Company Qualifications
  - Soliciting Comments on Auction Rules
    - One Area per Region
    - Bidder Credits
    - Lease Stipulations
    - Affiliated Entities Definition
- Auction Seminar March 16, 2023
- Comment Period Closes April 25, 2023



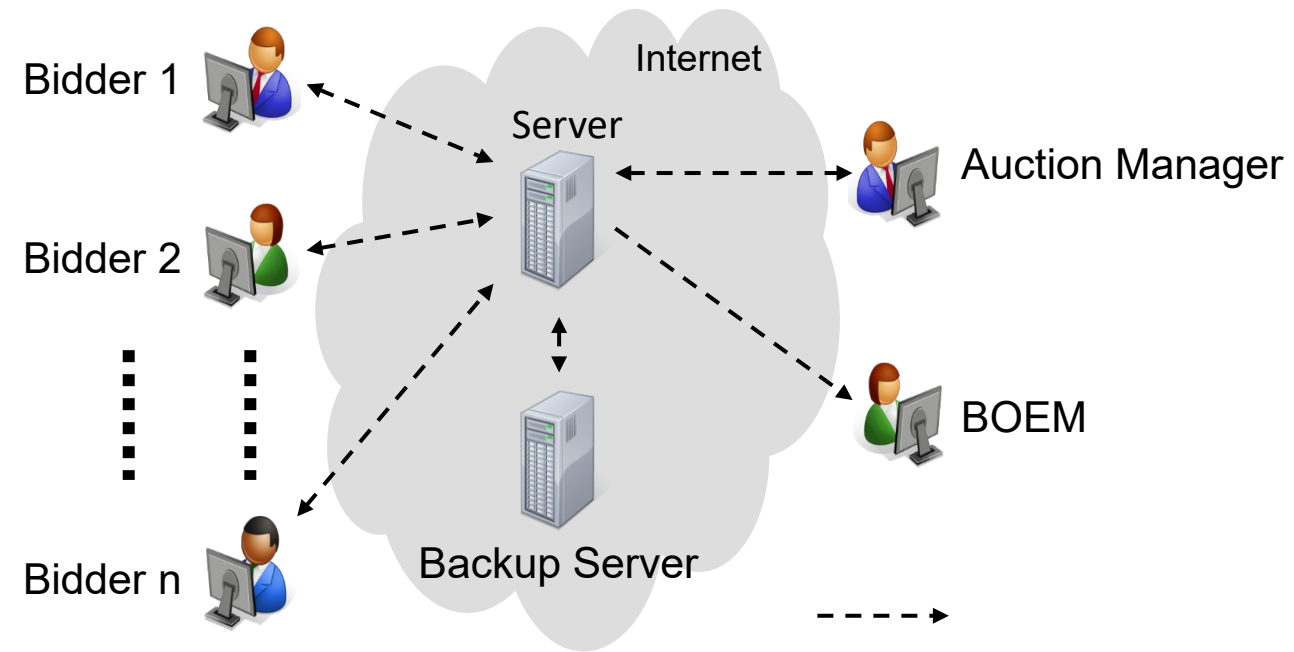
# Final Sale Notice

- Specifies final areas for sale and selected auction format & rules
  - May specify timing of submissions needed to qualify for a bidding credit(s)
- Incorporates any changes based on feedback from the comment period
- Lists eligible bidders
  - Does not guarantee participation
- Sets dates for next steps
- Minimum of 30 days from FSN to Auction



# FSN to the Auction

1. Bidder Financial Forms Due to BOEM
  - Lists any affiliations
  - Designates POC & Bidders
  - Bidding Credit Information
2. Bid Deposits Paid
3. Connectivity Test
4. Mock Auction
  - Notification of Bid Credit Eligibility
5. Live Auction



# Auction Day

1. Bidders log in
2. Rounds of the auction occur until one winner for each area
3. Website updated

Round	Asking Price	Bidder 1	Bidder 2	Bidder 3	Bidder 4
1	\$100?	✓	✓	✓	✓
2	\$150?	✓	✓	✓	✗
3	\$200?	\$190	✓	✓	✗
4	\$250?	✗	\$240	\$225	✗
WINNER					



# Auction to Lease Issuance

1. **Declaration of Provisional Winners**
  - Panel Decision
  - BOEM conducts press call
2. **DOJ Review**
  - Up to 30 Days
3. **Lease Sent to Winners for Execution (10 Business Days)**
  1. Pay balance of bonus bid
  2. File financial assurance
  3. Return signed lease copies



# BOEM

Bureau of Ocean Energy  
Management

[BOEM.gov](http://BOEM.gov)



Josh Grange | [joshua.gange@boem.gov](mailto:joshua.gange@boem.gov)





**BOEM** Bureau of  
Ocean Energy Management

# **Gulf of Mexico Offshore Wind: Bidding Credits Overview**

Offshore Wind Auction Seminar  
April 11, 2023

Marty Heinze  
Chief, Leasing Economics Coordination Branch  
BOEM Office of Strategic Resources

# Proposed GOM Bidding Credits

BOEM has offered bidding credits similar to those proposed in the GOM sale.

- Carolina Long Bay sale (2022)
  - Workforce training & supply chain development
- California sale (2022)
  - Workforce training & supply chain development
  - Fishing and community benefit agreements



# Proposed Bidding Credit Provisions

- Bidders may receive a bidding credit in exchange for committing to make a qualifying monetary contribution to programs or initiatives supporting offshore wind
- Two types of bidding credits proposed:
  - 20% bidding credit for a commitment to invest in programs that will advance U.S. offshore wind energy **workforce training and/or supply chain development.**
  - 10% bidding credit for establishing or contributing to a **GOM fishing mitigation fund.**
    - BOEM encourages lessees to work together to establish a single regional fund



# Bidding Credit Purpose

- **Workforce Training/Supply Chain Credit (20%)**
  - Incentivize lessees to make investments in workforce training and/or supply chain development that would be unlikely absent the bidding credit provisions.
  - Must further the development of the domestic supply chain or workforce
    - BOEM is not looking for studies, but rather initiatives or investments
- **Fisheries Compensatory Mitigation Fund (10%)**
  - Minimize potential economic efforts on commercial fisheries and provide assurance to fishing stakeholders that compensatory mitigation will be available for lost income and gear loss.



# Conceptual Strategy

- Bidders must submit a bidding credit conceptual strategy with the Bidders Financial Form (BFF).
- The bidder's conceptual strategy will be reviewed by a BOEM Auction Panel for compliance with the bidding credit requirements.
  - Result is a Pass/Fail for each credit
- **The Conceptual Strategy must:**
  - Demonstrate the bidder will commit to workforce training and offshore wind supply chain Contributions, and/or a Contribution to a GOM Fishing Mitigation Fund as described in the lease and BFF addendum.
  - Explain how the Lessee will select Contribution recipients or partners that will support the purpose of the bidding credit(s).



# 20% Workforce Training or Supply Chain Credit

- Bidders are not required to execute agreements or provide commitments to work with specific partners before the auction.
- **Workforce training programs**
  - Intended for skills needed to support offshore wind manufacturing, assembly, construction or operations.
  - NOT intended for other educational or research purposes such as high school STEM programs or university scholarships/research.
- **Supply chain efforts**
  - Intended to support offshore wind supply chain development through assistance to component suppliers.
  - Bonding reserve fund, equipment upgrades, ISO 9001 or related materials and component certification expenses.



# Compliance/Enforcement (20% Credit)

- **20% Workforce Training/Supply Chain Bidding Credit**
  - The Lessee is not permitted to retain an equity interest in the entity receiving the Contribution, a discount on the market price for goods or services but can purchase offshore wind goods or services from the recipient at market rates.
  - All lessees must have the opportunity to hire trained individuals. Trainees cannot be contractually required to enter into employment agreements with either the Lessee or the entity providing the training.
- **If the Lessee fails to satisfy the bidding credit commitment, the amount will be immediately due and payable with interest.**



# GOM Fishing Compensatory Mitigation Fund (10% credit)

- The Fund does not need to be established until submission of the lease's first FDR, but the lessee must provide compensatory mitigation for direct impacts even if the fund is not established.
- The fisheries compensatory mitigation fund must be independently managed by a third party and designed with fiduciary governance and strong internal controls while minimizing administrative expenses.
  - BOEM is specifically requesting comments on fund fiduciary provisions since BOEM will not have a long-term oversight role.





# GOM Fishing Compensatory Mitigation Fund cont.

- A regional fund should be flexible enough to incorporate contributions from future lease auctions and actuarially sound to recognize the multi-decade life of GOM offshore wind projects.
- The fund's first priority is to compensate for gear loss or damage and income loss. Excess funds may be used to:
  - Promote participation of fishers and fishing communities in the project development process;
  - Promote research into the coexistence of multiple ocean industries; and
  - Offset the cost of gear upgrades for operating within a wind farm.



# Bidding Credit Example (discount on cash bid)

- Example: a winning bidder qualifying for the full 30% bidding credit.
  - The total winning bid is \$30 million.
  - The bidder would receive a credit of \$6.923 million towards its winning bid in exchange its commitments.
  - The calculations are as follows:

$$\text{Cash Bid} = \frac{\$30 \text{ million}}{(1 + 0.30)} = \$23.077 \text{ million}$$

$$30\% \text{ Credit} = \$30 \text{ million} - \$23.077 \text{ million} = \$6.923 \text{ million}$$

- **Notes:**
  - 30% Credit is 23.08% of Imputed Price
  - \$4.615 million commitment to training/supply chain
  - \$2.308 million commitment to fishing mitigation fund



# BOEM

Bureau of Ocean Energy  
Management

[BOEM.gov](http://BOEM.gov)



Marty Heinze | [martin.heinze@boem.gov](mailto:martin.heinze@boem.gov)

**Task Force Discussion**  
**Questions and Comments on the Proposed Sale Notice**

**BREAK**

**Return at 10:50 a.m. CT**

# Task Force Member Updates

# BSEE UPDATE GOM TASK FORCE MEETING

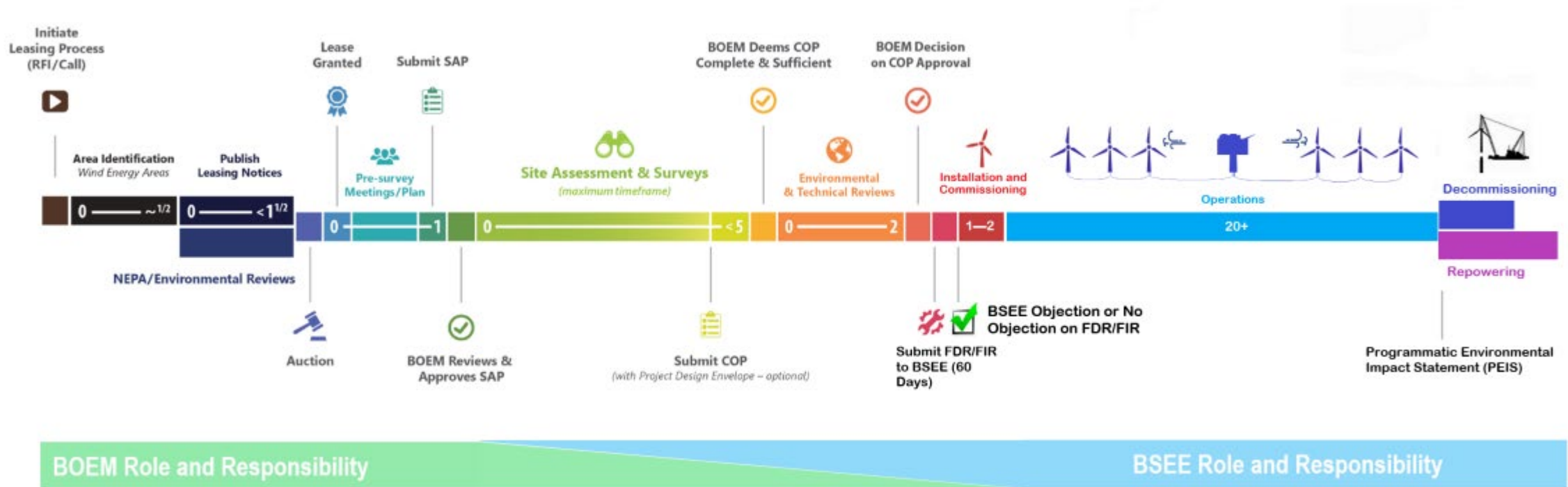
CHRISTY LAN  
APRIL 11, 2023



Bureau of Safety and Environmental Enforcement

*Promoting Safety, Protecting the Environment and Conserving Offshore Resources*

# Overview of BOEM's and BSEE's Roles for Offshore Renewable Energy





# Split of the Renewable Regulations

- In December 2020, the Principal Deputy ASLM, determined that the increased level of development activity . . . has reached the threshold envisioned by S.O. 3299 as amended, and direct[ed] the transfer of safety and environmental compliance responsibilities from BOEM to BSEE.
- That transfer of authority was effectuated in September 2022, through revised chapters in the Departmental Manual.
- The Split Rule was published in the Federal Register in January 2023.
  - BOEM/BSEE “Split Rule” (AA03): This final rule transfers certain safety and environmental oversight, compliance, and enforcement regulations for the Department’s Offshore Renewable Energy Program from BOEM (30 CFR 585) to BSEE (30 CFR 285), with no substantive changes.
  - AA03 also reorganizes certain sections pertaining to Alternate Use RUEs in BOEM’s regulations, transferring them from 30 CFR part 585 to a new 30 CFR part 586. In BSEE’s regulations, Alternate Use is covered in the new 30 CFR 285 regulations.



# The Transfer's Impact to the Offshore Wind Industry

BSEE and BOEM are dedicated to timely and consistent communication, information sharing, and the resolution of issues to ensure that offshore wind development progresses in an effective, efficient, safe and environmentally sound manner.

Both Bureaus have been working collaboratively to review renewable energy submissions and establish guidance for the offshore wind industry. They will continue in this manner after the transfer of regulations.

BOEM is responsible for managing offshore energy resources on the OCS in an environmentally and economically responsible way.

BSEE is responsible for the development, oversight, and enforcement of safety and environmental standards for the offshore energy operations.



# BSEE/BOEM Key Authorities

<b>BOEM</b>	<b>BSEE</b>
Issuing and managing leases NEPA analyses	Operational safety and environmental protection
Site Assessment Plan Construction and Operations Plan General Activities Plan	Facility Design Report Fabrication and Installation Report Safety Management System Oil Spill Response Plan Emergency Response Plan
Financial Assurances	Decommissioning
Enforcing BOEM regulations	Enforcing BSEE regulations



# BSEE Priorities

- Develop a compliance assurance strategy including audits, inspections, self-inspection, assessments, and compliance actions.
- Safety Management System (SMS) – BSEE just published a SMS expectations document.
- Develop Standard Operating Procedures for BSEE’s program and shared agreements with BOEM and other agencies such as USCG.
- Develop guidance for the industry including FDR/FIR reviews and CVA oversight and munitions and explosives of concern.
- Hiring more staff to manage workload.
- Rolling out TIMS Web for industry submittals.





QUESTIONS ?



BSEEWbsite:  
[www.bsee.gov](http://www.bsee.gov)



[@BSEEGov](https://twitter.com/BSEEGov)



[BSEEGov](https://www.youtube.com/BSEEGov)



[Bureau of Safety  
and Environmental  
Enforcement](https://www.linkedin.com/company/bureau-of-safety-and-environmental-enforcement)



[BSEEGov](https://www.facebook.com/BSEEGov)



# Gulf of Mexico Intergovernmental Renewable Energy Task Force Meeting April 11, 2023



## Coast Guard Updates

LCDR Jake Aulner, USCG Headquarters (CG-NAV-2)



Homeland  
Security



---

# Port Access Route Study (PARS)

## **Approaches to Galveston Bay and Sabine Pass, TX and Calcasieu Pass, LA**

- Notice of Study Published 01 MAR 2023
- Docket number USCG-2023-0063
- Comment Period Closes 27 APR 2023
- Evaluate the adequacy of existing vessel routing measures and determine whether additional vessel routing measures are necessary to ensure vessel can safely transit to/from U.S. Ports.

## **Conducted by District Commander, Eighth Coast Guard District in New Orleans, LA**

- Factors
  - ▶ Offshore Renewable Energy Leasing & Development
  - ▶ Vessel Traffic Frequency & Patterns
  - ▶ Commercial Vessel Lightering Operations
  - ▶ Commercial & Recreational Fishing Vessel Operations
  - ▶ Public & Stakeholder Engagement

---

# Proposed Lease Areas

## **USCG Authority**

- Areas adequately avoid designated Fairways
- Areas adequately avoid recommended 2 nm set-back from designated Fairways

## **USCG Recommendations**

- USCG responded to the Wind Energy Area Identification public comment period, calling attention to the presence of commercial vessel traffic conducting ship-to-ship lightering operations within and around the proposed lease areas.
- Offshore Lightering stakeholders have expressed concerns for potential impacts to operations, which are conducted within and near the proposed lease areas.
- USCG recommends BOEM continue to engage the region's Offshore Lightering stakeholders and evaluate potential impacts to inform proposed leasing decisions.
- USCG recommends Offshore Lightering stakeholders participate in the public comment process to ensure equities are identified and adjudicated.





# Questions



**LCDR Jake Aulner, Headquarters, CG-NAV-2, Washington, DC**

[Jacob.I.Aulner@uscg.mil](mailto:Jacob.I.Aulner@uscg.mil)

**Maureen Kallgren, Headquarters, CG-NAV-2, Washington, DC**

[Maureen.R.Kallgren2@uscg.mil](mailto:Maureen.R.Kallgren2@uscg.mil)

**LCDR Mary Gilday, Eighth District, New Orleans, LA**

[Mary.A. Gilday@uscg.mil](mailto:Mary.A.Gilday@uscg.mil)

**Ms. Brandi Canada, Eighth District, New Orleans, LA**

[Brandi.Canada@uscg.mil](mailto:Brandi.Canada@uscg.mil)





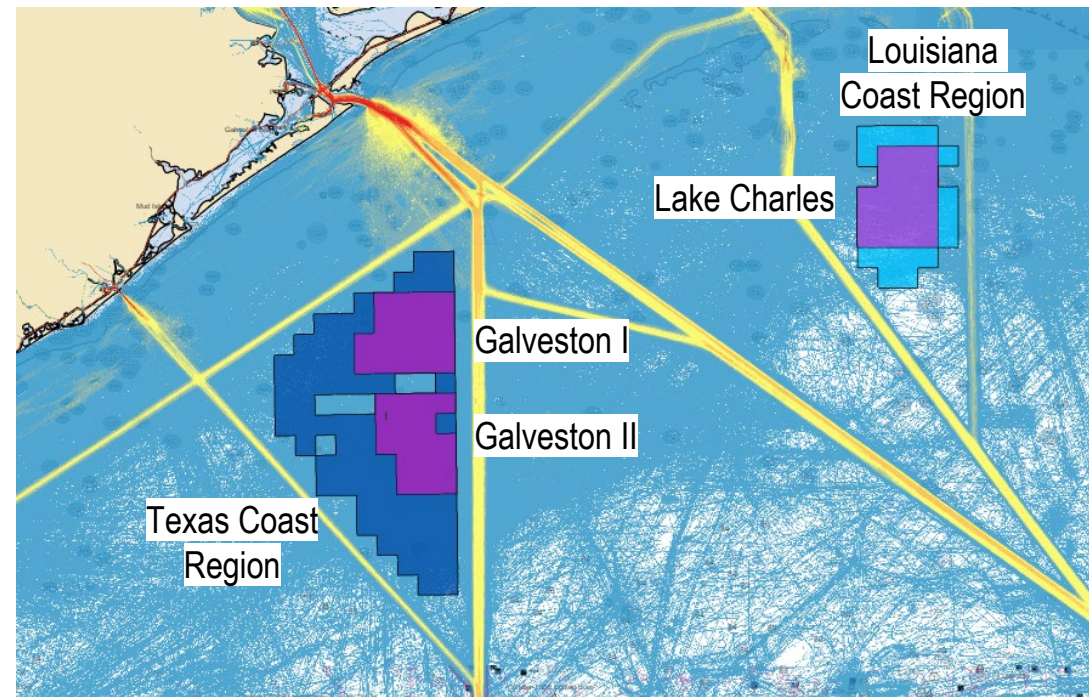
**NOAA**  
**FISHERIES**

# Offshore Wind Energy in the Gulf of Mexico

Task Force Meeting - April 11, 2023

## Focal points or our PSN comments

- Trust resources and mandates (MMPA, ESA, Magnuson-Stevens)
- Habitat Considerations
- Stakeholder Engagement and EEJ
- Scientific Surveys & Adaptive Management
- Regulatory advice



# Key Messages

- 1) **Static to dynamic Marine Spatial Planning.** Lease planning was based on static distributions; animals are dynamic; next steps are to incorporate dynamic movement.
- 2) **Continued monitoring** Large-scale surveys such as GoMMAPPs inform planning, understanding and mitigation of impacts; track distribution and abundance of our key trust resources
- 3) **Bidding credits for community benefit and monitoring.** The pending lease sale is a unique opportunity to build financial support for these surveys into lease agreements so that the development supports the science that supports the development in the new Blue Economy

# 1. Moving from static to dynamic Marine Spatial planning

- Spatial layers used in Marine Spatial Planning exercise were static
- Animals move seasonally and conditions change
- Moving from spatial planning to constructions and operations means leveraging dynamic information on distribution and abundance



<https://www.nature.com/articles/s41598-022-10482-8#MOESM2>

## 2. Continued monitoring: Large-scale surveys e.g. GoMMAPPs

- GoMMAPPs data provides critical data on marine mammals and sea turtles for informed planning
- Understanding of species distribution and abundance throughout the lifespan of Offshore wind installation and operations

U.S. DEPARTMENT OF THE INTERIOR

BOEM  
Bureau of Ocean Energy Management

OPERATING STATUS CONTACT US EMPLOYMENT JOIN OUR MAILING LIST

ABOUT BOEM REGIONS NEWSROOM OIL & GAS ENERGY RENEWABLE ENERGY ENVIRONMENT MARINE MINERALS

HOME

### GoMMAPPs

Project Summary Methods Status & Updates Presentations Field Blog

**Project Details**  
Gulf of Mexico Marine Assessment Program for Protected Species (GoMMAPPs)

**Project Summary**

Improved information is needed on living marine resource abundance, distribution, habitat use, and behavior in the Gulf of Mexico to properly mitigate and monitor for potential impacts of human activities, including related to offshore energy development. Understanding of cumulative impacts on protected species in the Gulf from both natural and anthropogenic forcing is required to inform NEPA documents and consultations and rulemaking related to Endangered Species Act (ESA), Marine Mammal Protection Act (MMPA), and Migratory Bird Treaty Act (MBTA), as well as other statutes that govern bureau activities. The results of this study will provide important information to inform both BOEM and BSEE regulatory needs, as well as other agencies and stakeholders involved in effective management and conservation of Gulf protected species.

BOEM NOAA USGS NOPP

Garrison et al 2023

# 3. Bidding credits-

- We support the bidding credits to incentivize developer contributions to workforce training and Fisheries Compensation Mitigation Funds
  - is 10% lease bidding credit enough?
  - Would private recreational fisheries also apply?
  - Ensure Equity and Environmental justice are applied



Unique opportunity to support large-scale monitoring surveys such as GoMMAPPS and to support the [BOEM-NOAA Survey mitigation strategy](#)

*The New Blue Economy is a “a knowledge-based economy, looking to the sea not just for extraction of material goods, but for data and information to address societal challenges and inspire their solutions.”*

**Dr. Richard Spinrad,  
Under Secretary of Commerce for Oceans and Atmosphere & NOAA Administrator**



# Key Messages

- 1) **Static to dynamic Marine Spatial Planning.** Lease planning was based on static distributions; animals are dynamic; important to incorporate dynamic movement.
- 2) **Continued monitoring** Large-scale surveys such as GoMMAPPs inform planning, understanding and mitigation of impacts; track distribution and abundance of our key trust resources; need for new surveys and mitigation of existing surveys
- 3) **Bidding credits for community benefit and monitoring.** The pending lease sale is a unique opportunity to build financial support for these surveys into lease agreements so that the development supports the science that supports the development in the new Blue Economy

# Other Task Force Member Updates, Questions, and Discussion



# Overview of Next Steps and Closing Remarks

# Future Action: Next Few Months

- Next Steps
  - Final Environmental Assessment (EA)
  - Final Sale Notice (FSN)
  - Proposed Lease Auction



**Task Force Meeting Adjourn**  
**Return at 12:00 p.m. CT**

# Public Input Opportunity

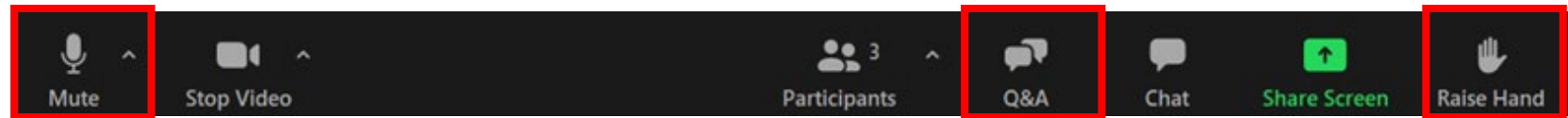
# Public Input Opportunity – Participation Guidelines

- “Honor” the agenda and timing afforded.
- Participate respectfully.
- Speak in order; facilitator will mind the queue.
- Provide your name and affiliation before you speak.
- Speak clearly into the mic/phone for others to hear you.



# Public Input Opportunity – Participation Guidelines

- To get in the queue to speak, please click the “raised hand” button (icon in the bottom taskbar). The facilitator will call on you.
- For phone participants, dial \*9 to Raise Hand to enter the queue once called on by the facilitator, dial \*6 to unmute and begin speaking.
- If needed, you can also share comments using the “Q&A pod” in the bottom taskbar. Messages will be read aloud by the facilitation team following the oral comments.



- Provide informal public input opportunity to share thoughts on the Task Force discussions or the issues they are addressing.
- Formal comments on the PSN should be provide through [www.regulations.gov](http://www.regulations.gov) [docket number BOEM-2023-0021] on or before 11:59 pm ET on April 25, 2023



# Contact Information

- For any questions, please contact:
  - Idrissa Boubé, [Idrissa.Boube@boem.gov](mailto:Idrissa.Boube@boem.gov)
- For media inquiries, please contact:
  - Hillary McKey, [Hillary.Mckey@boem.gov](mailto:Hillary.Mckey@boem.gov)
  - John Filostrat, [John.Filostat@boem.gov](mailto:John.Filostat@boem.gov)



**THANK YOU!**