



Request for Interest (RFI) Development Framework

Office of Renewable Energy Programs

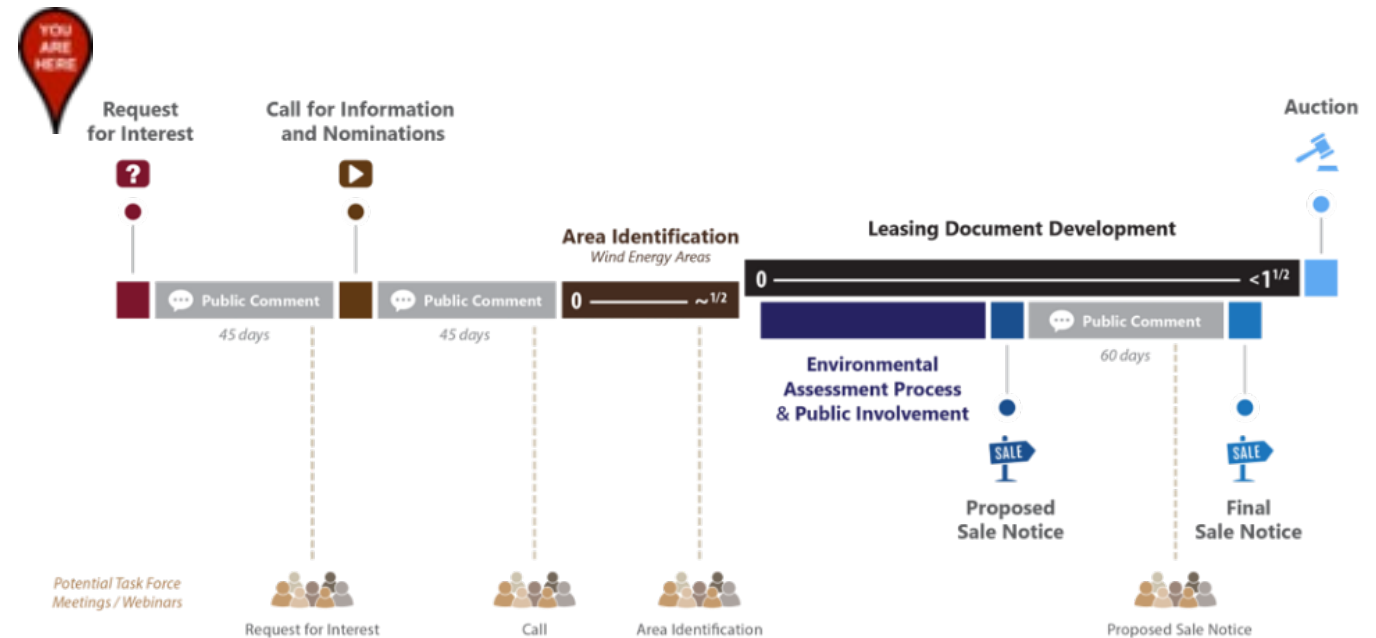
Zach Jylkka, Project Coordinator

May 19, 2022



RFI Development Framework

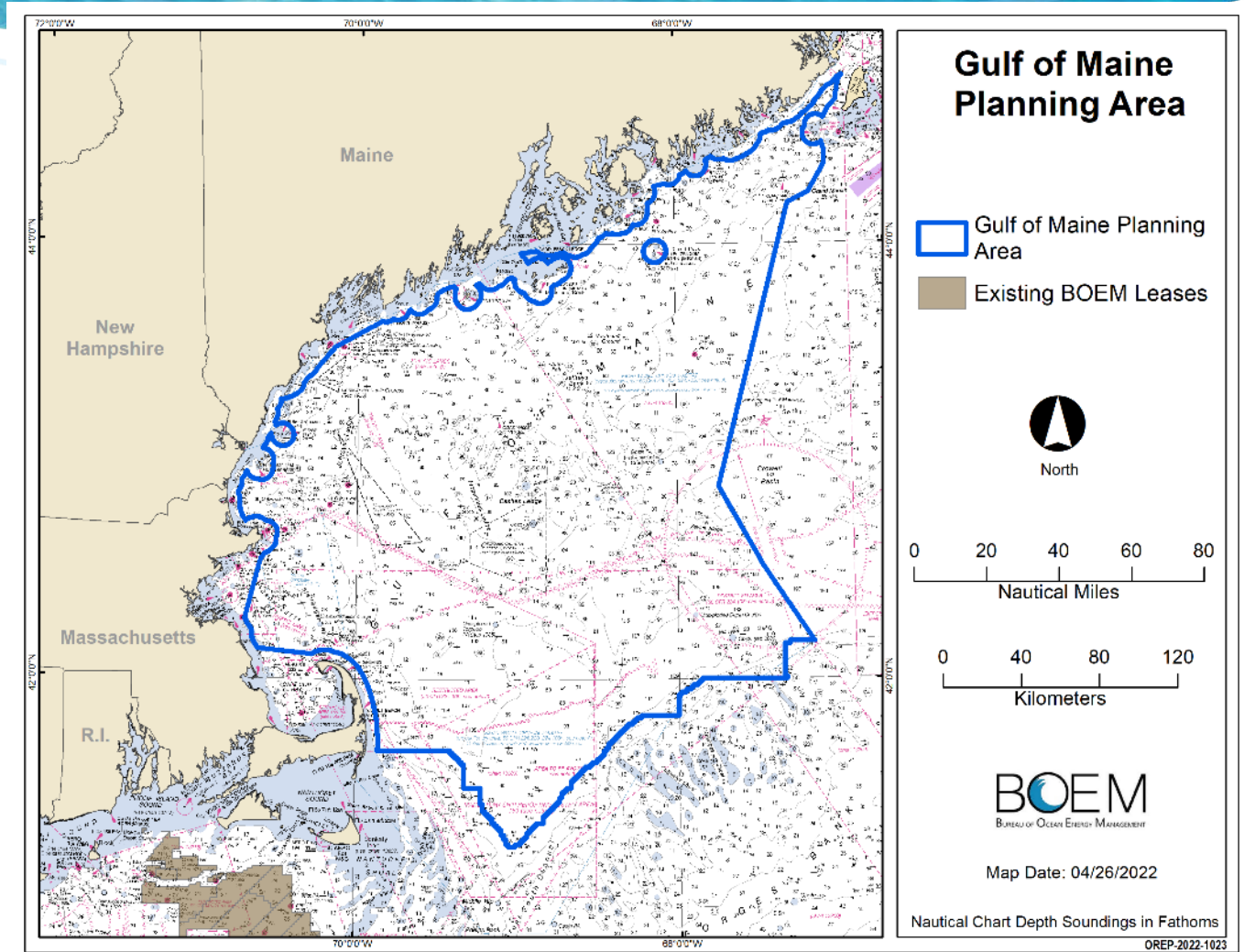
- BOEM has decided to start with a request for interest (RFI)
- Gauge commercial interest in offshore wind development
- Maximize the opportunity for the public to engage and provide input
- Development Framework provides transparency on BOEM's process and thinking



[Link to RFI Development Framework](#)

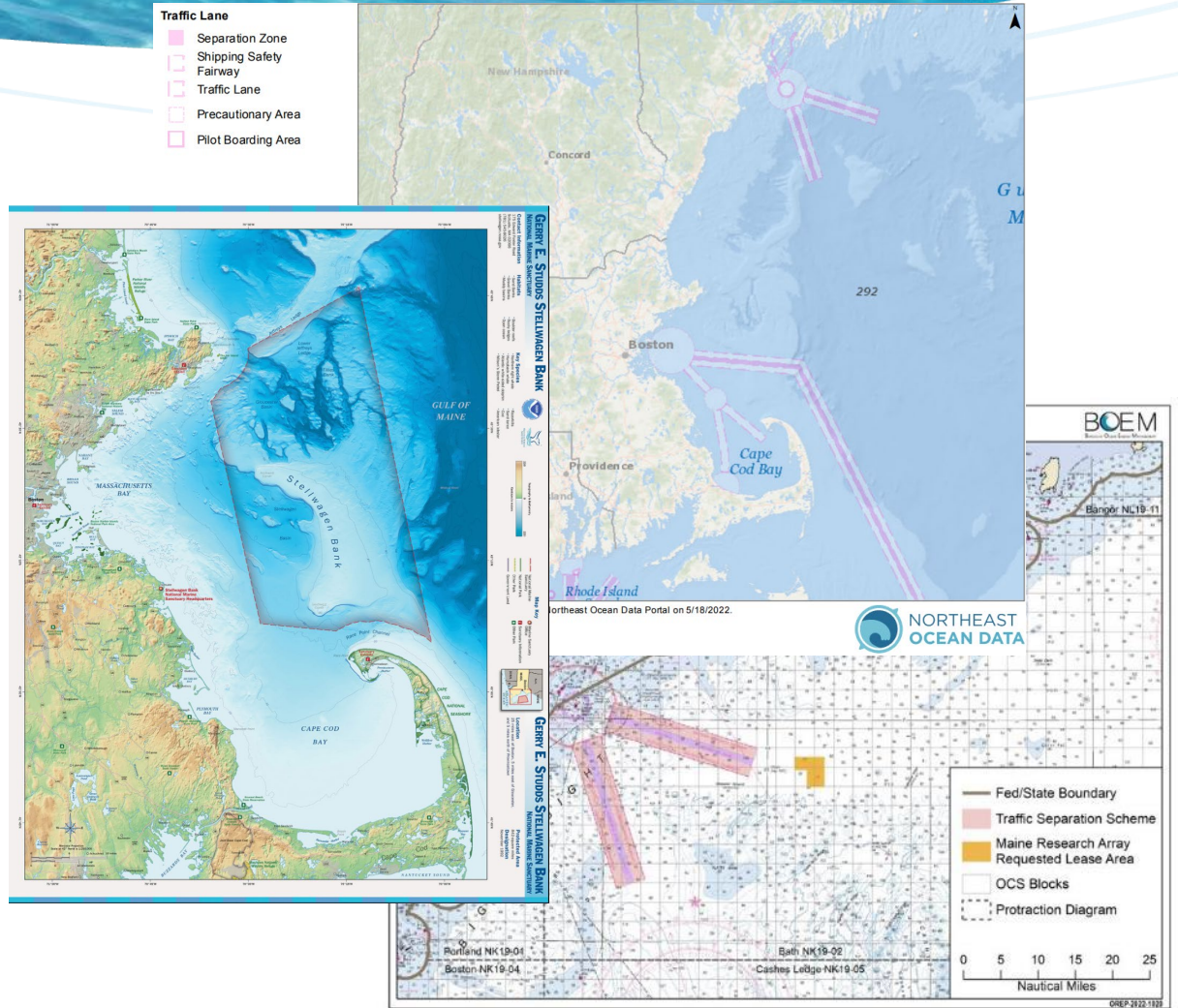
Gulf of Maine Planning Area

- Roughly bounded on the west, north, and east by BOEM's jurisdiction for renewable energy activities on the outer continental shelf (OCS)
 - 3 nmi from shore to the Exclusive Economic Zone (EEZ)
- Southern boundary BOEM defined by the unique features that create the Gulf of Maine.



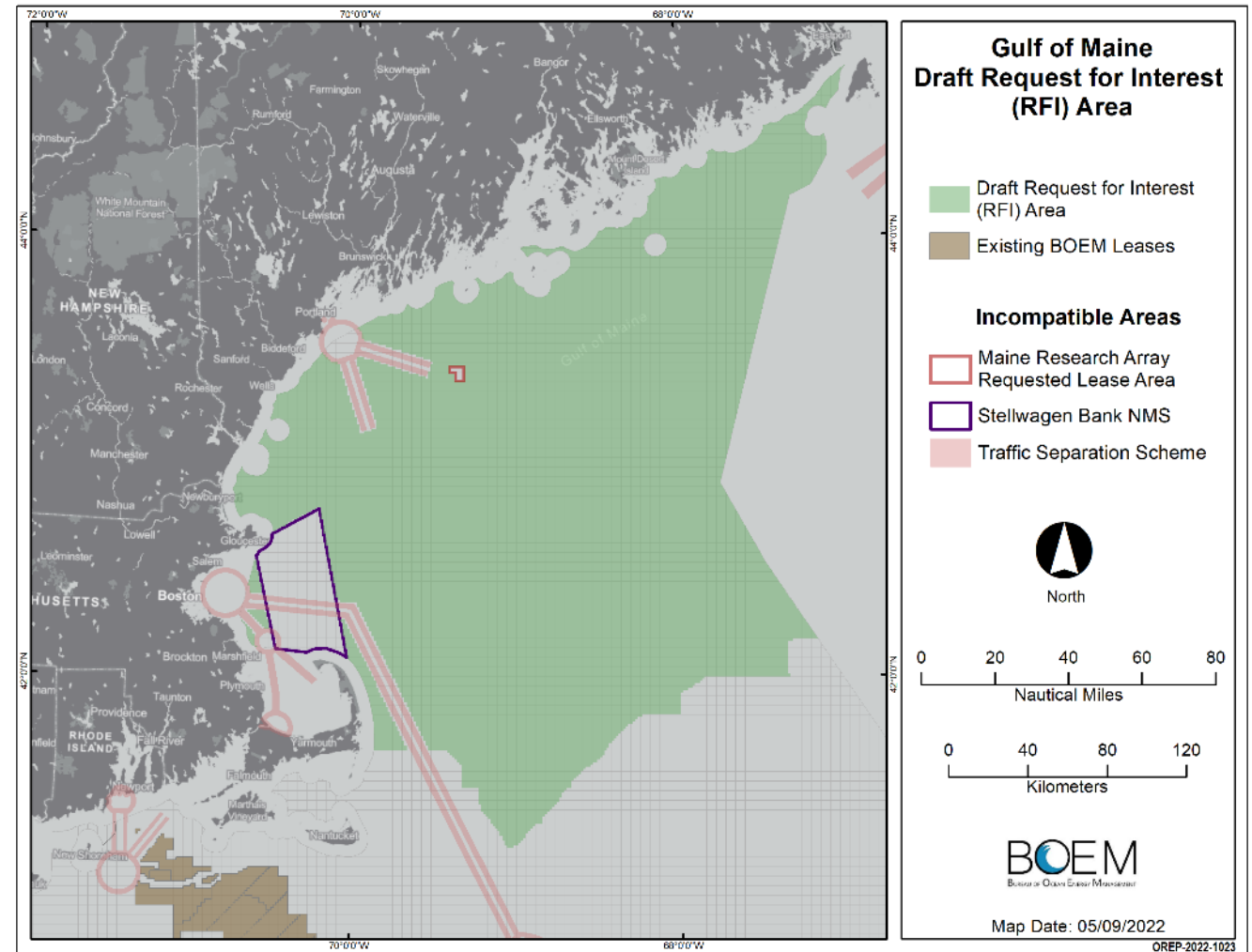
RFI Incompatible Areas

- National Park System, National Wildlife Refuge System, National Marine Sanctuary System, or any National Monument (§585.204)
- Existing Traffic Separation Schemes (TSS), fairways, or other internationally recognized navigation measures
- Existing BOEM lease areas
- Unsolicited lease request areas that are the subject of a separate request for competitive interest



DRAFT RFI Area

- Only incompatible areas removed to date
- BOEM recognizes that conflicted areas remain within this RFI
 - RFI is largely an information gathering step.
 - Winnowing process continues in future steps (e.g., Call Area, Wind Energy Areas)
 - Significant removals expected



RFI Requested Information

Requested Information Categories

(examples from RFI Development Framework, not an exhaustive list):

- Commercial/recreational fishing
- Protected species and habitat
- Tribal issues of concern and indigenous traditional knowledge
- Technical/economic factors such as distance from shore, electricity demand, existing grid interconnections, etc.
- Other uses of the OCS



Breakout Groups & Public Input Opportunity



TASK FORCE MEMBER BREAKOUTS

Breakout Instructions

45 minutes in smaller groups to discuss:

1. The information requested in the RFI

- What might be missing from BOEM's draft list?
- New information that could inform the process?

2. Stakeholder engagement

- BOEM plans to convene meetings prior to publishing a Call Area. What would make this engagement meaningful?

3. Issues needing more explanation

- Are there aspects of this RFI development process that would benefit from greater explanation from BOEM? If so, what are they?

4. Anything else?

- Are there any other comments or questions about the RFI Development Framework?

BOEM

Bureau of Ocean Energy
Management

BOEM.gov



zachary.jylkka@boem.gov | (978) 491-7732