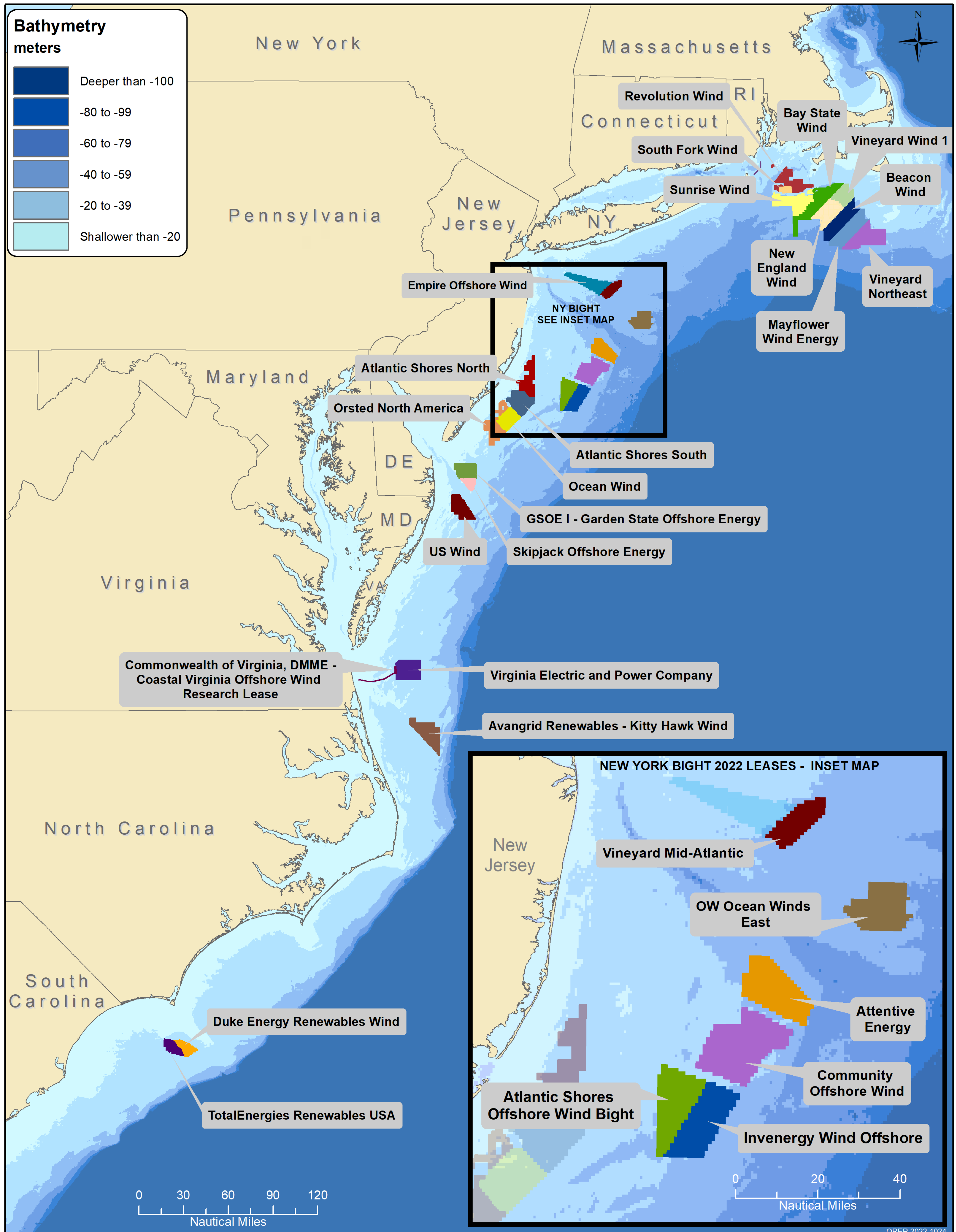




Atlantic Offshore Wind Lease Areas

BOEM is responsible for overseeing offshore renewable energy development on the Outer Continental Shelf (OCS) in an economically and environmentally sound manner. This map depicts active commercial and research offshore wind energy leases on the Atlantic OCS. Where possible, individual projects are identified.



For more information, visit [BOEM.gov/renewable-energy](https://www.boem.gov/renewable-energy)