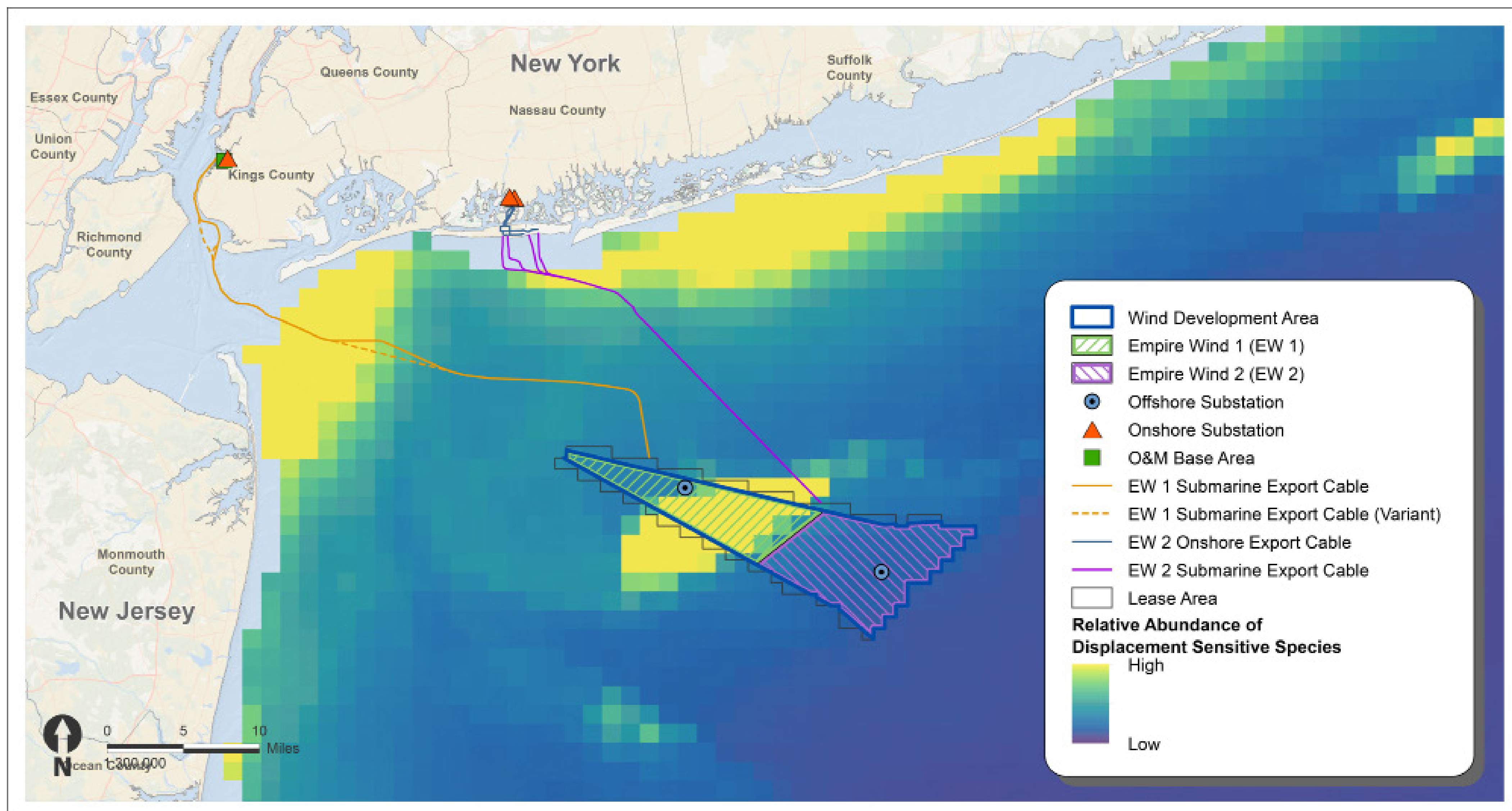


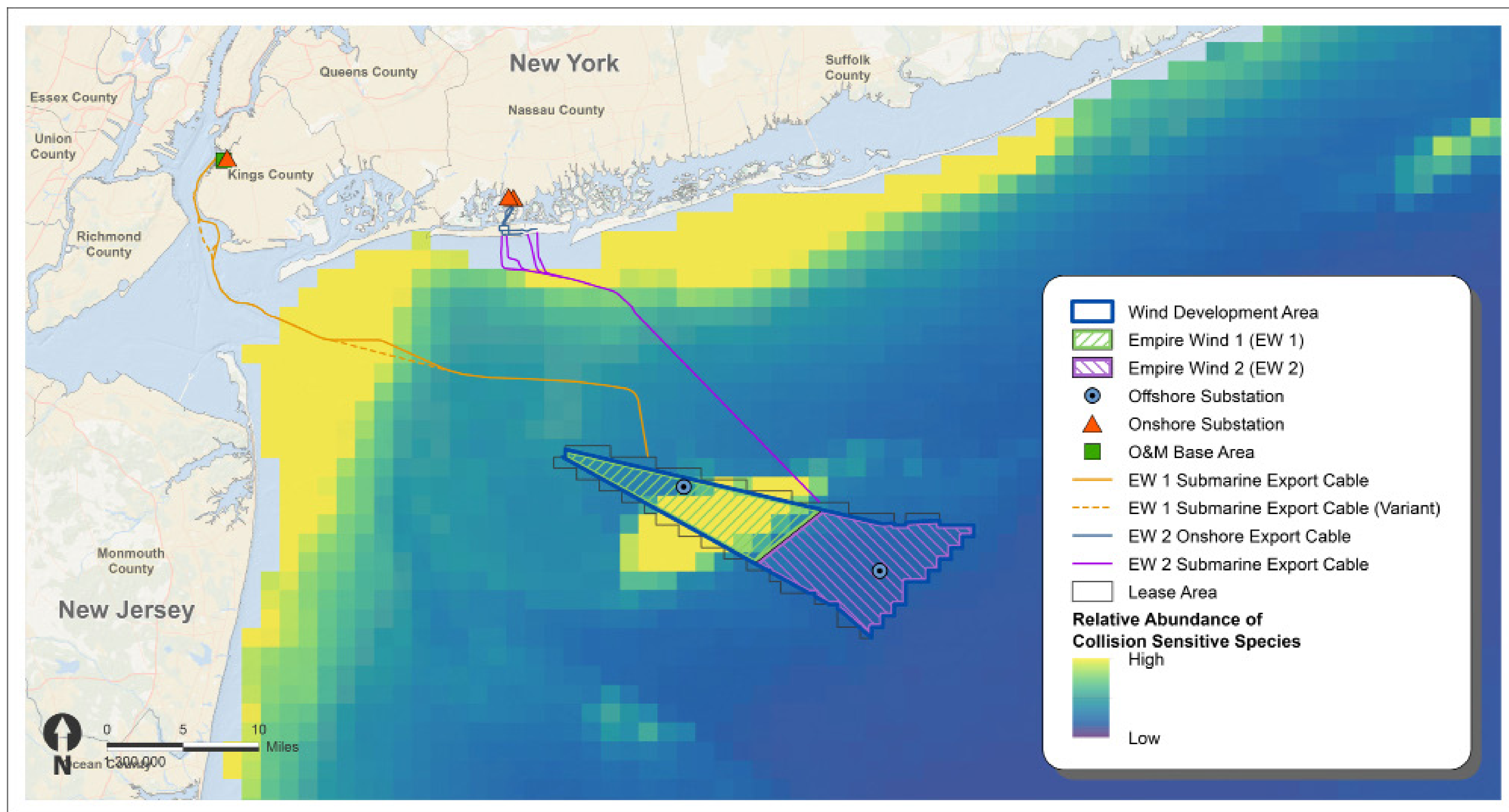
Empire Wind Project (EW1 and EW2)

# Relative Abundance of Marine Birds Sensitive to Offshore Wind Development

## Displacement Sensitive Group of 20 Species



## Collision Sensitive Group of 36 Species



Adapted from: Halpin, P, E Balderama, J Cleary, C Curtice, M Fogarty, B Kinlan, C Perretti, J Roberts, E Shumchenia, and A Winship. Marine life summary data products for Northeast ocean planning. Version 2.0. Northeast Ocean Data. Accessed at: <http://northeastoceandata.org>.