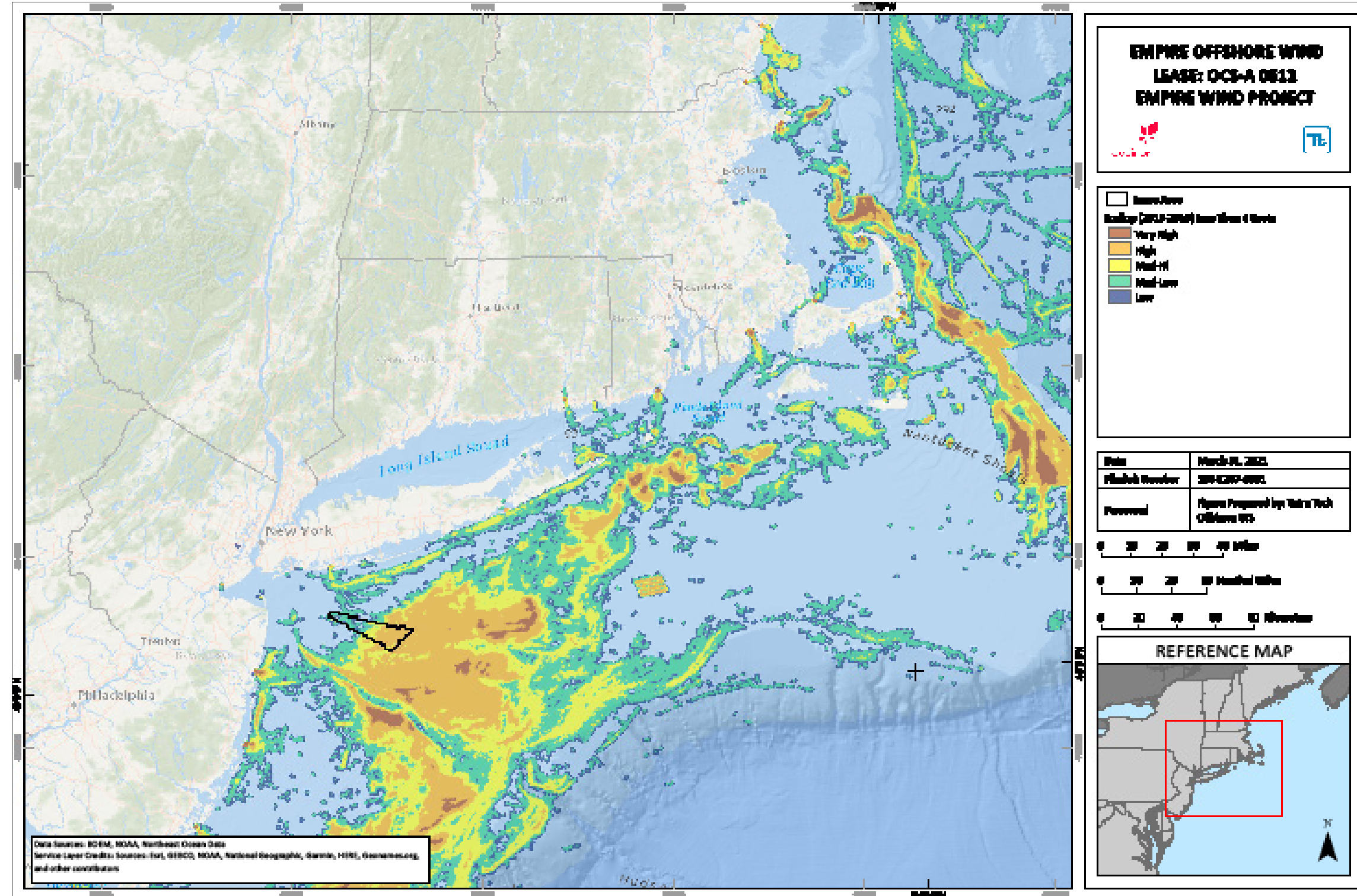


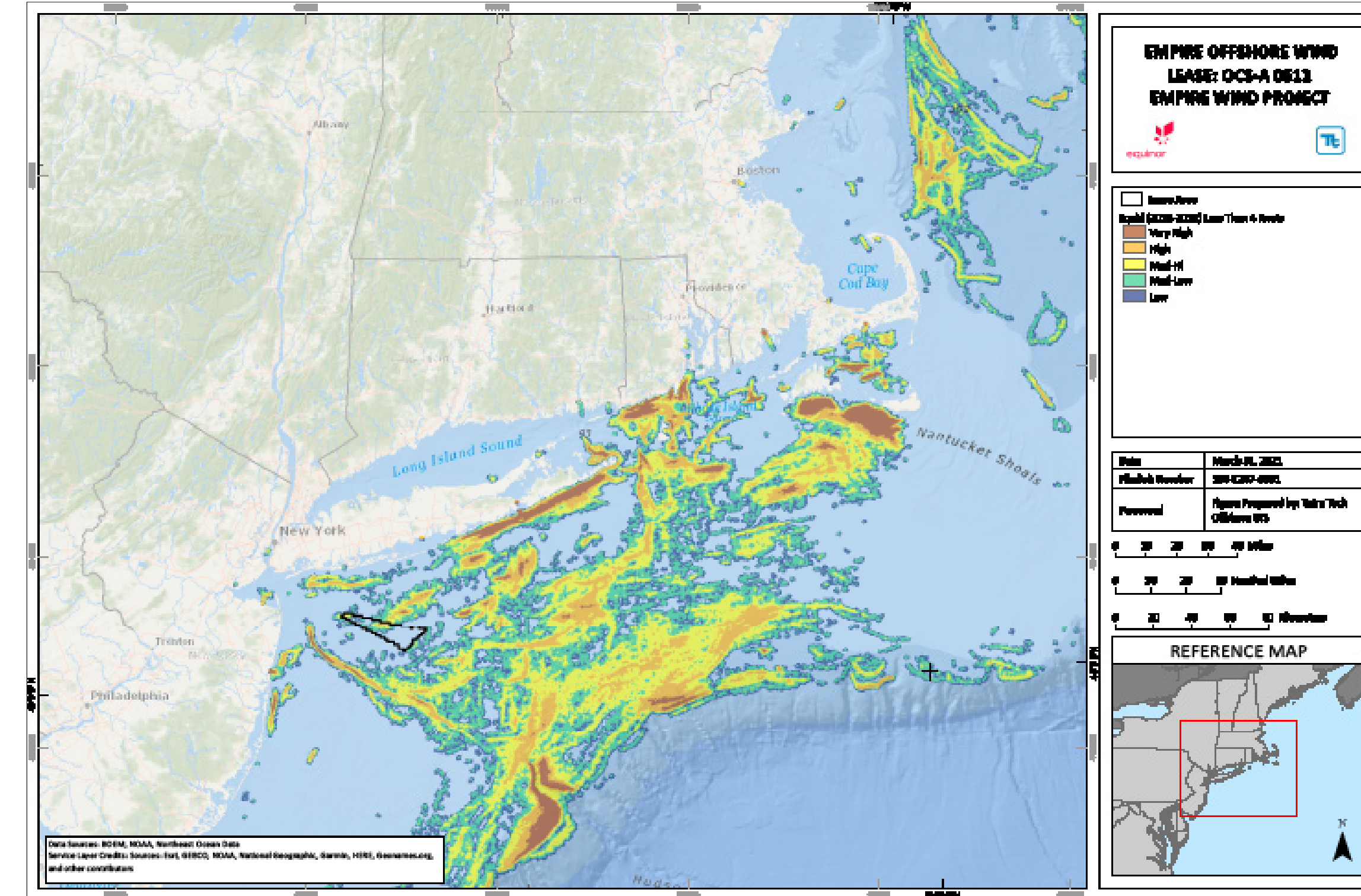
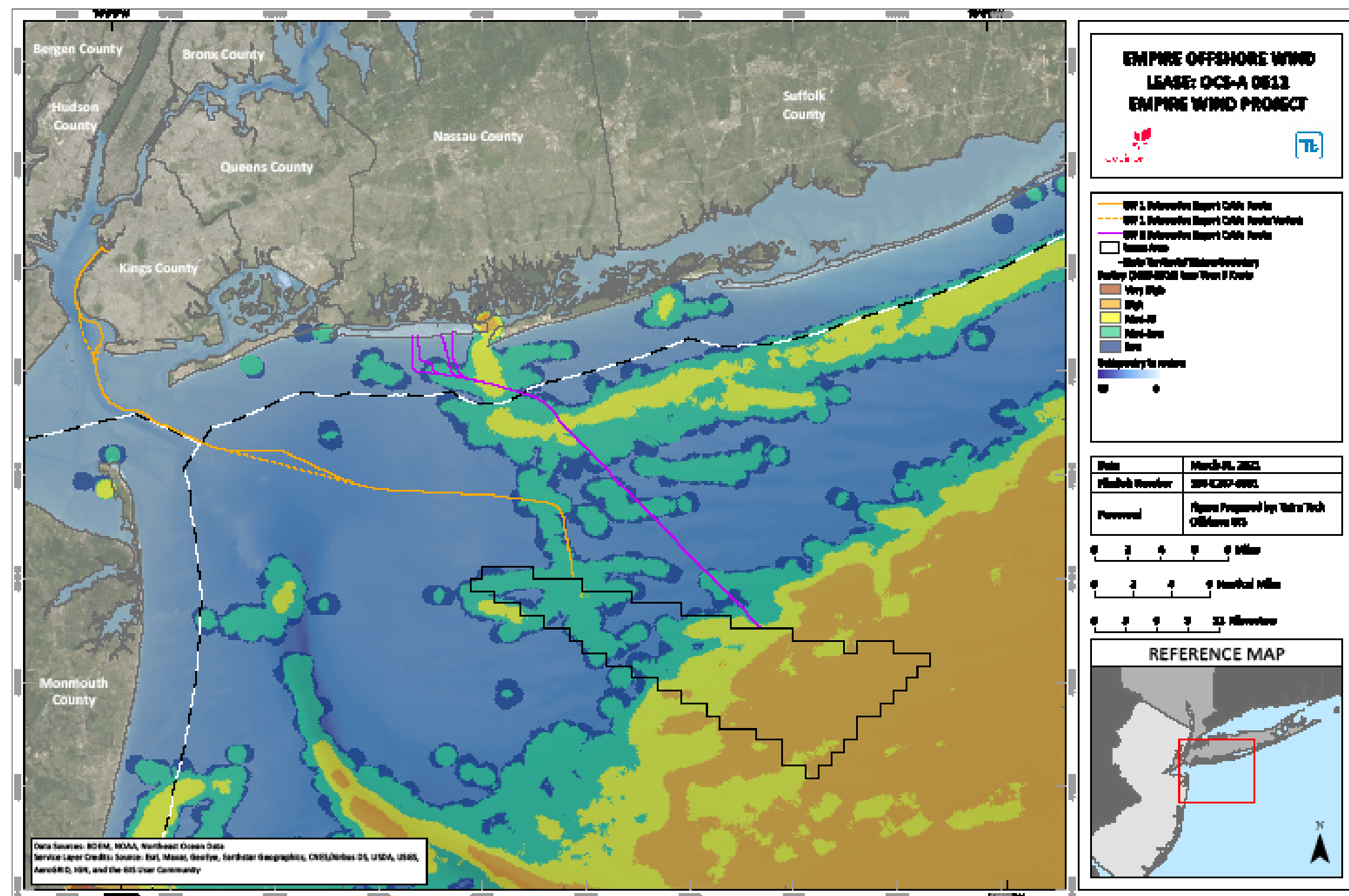


Empire Wind Project (EW1 and EW2)

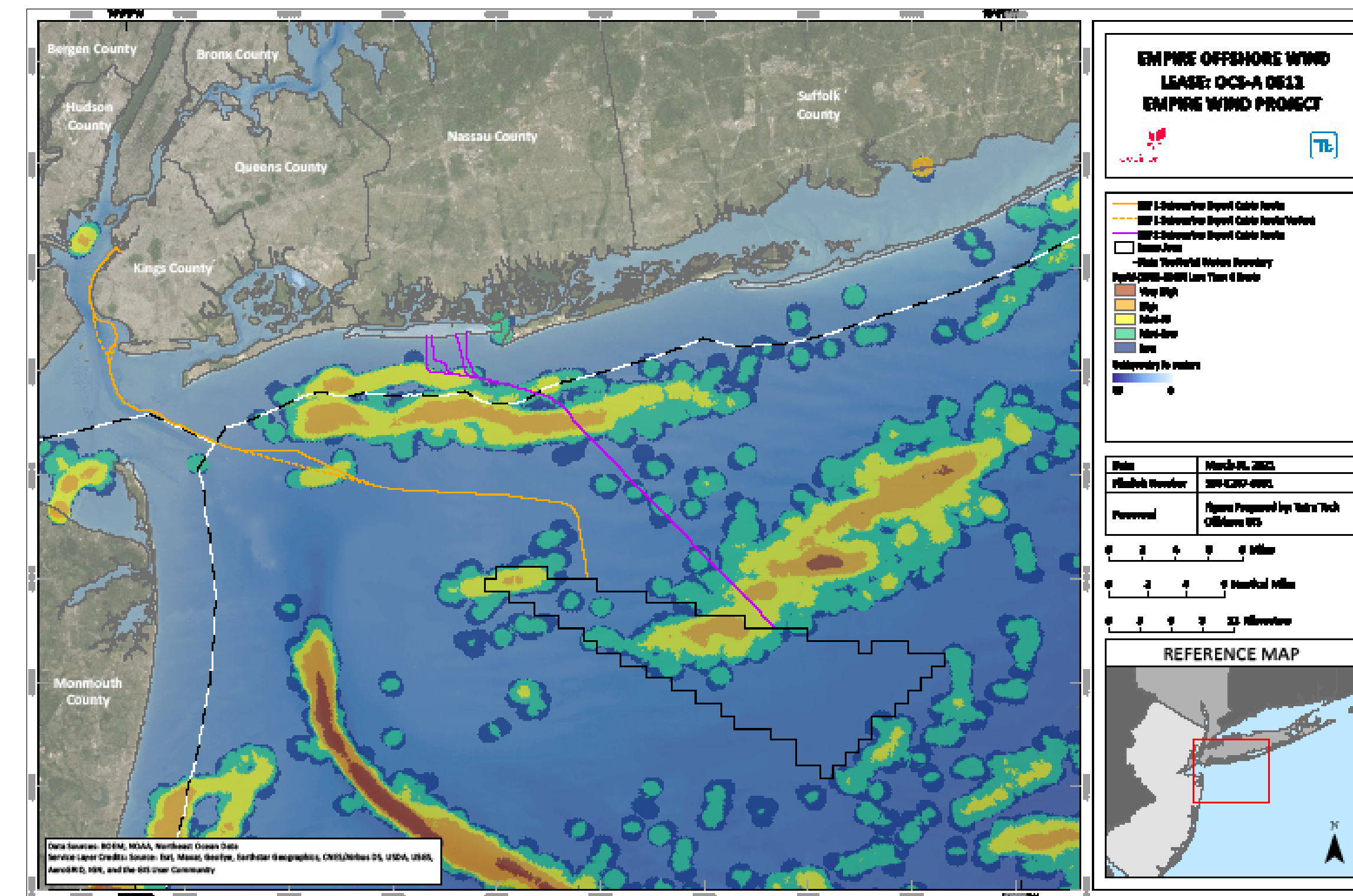
Commercial Fishing Density



Scallop fishing activity at < 5 knots, 2015-2016 VMS Data (MARCO), shown at the regional scale (upper panel), and the Project Area scale (lower panel)



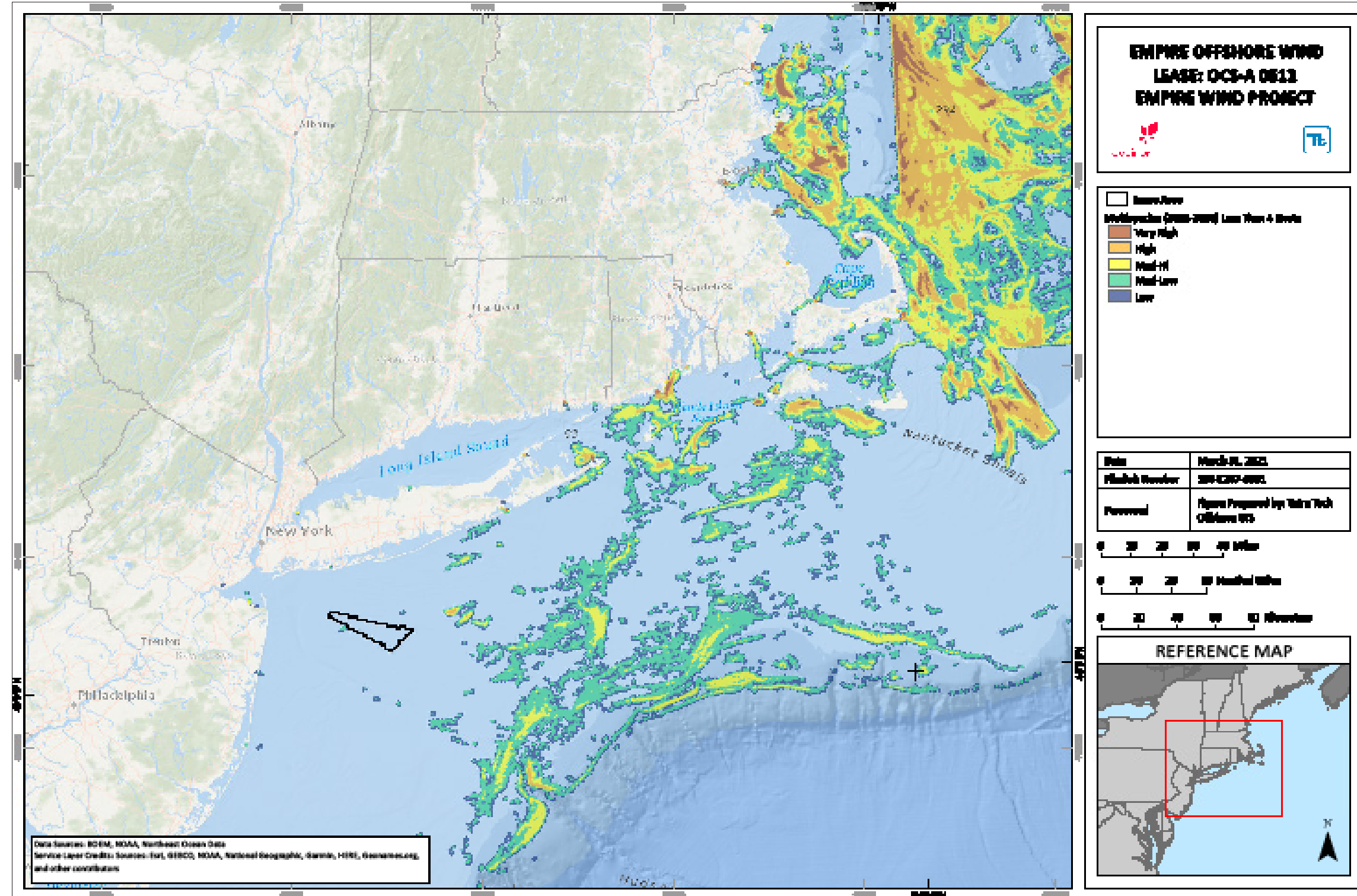
Squid trawling at < 4 knots, 2015-2016 VMS Data (MARCO), shown at the regional scale (upper panel), and the Project Area scale (lower panel)



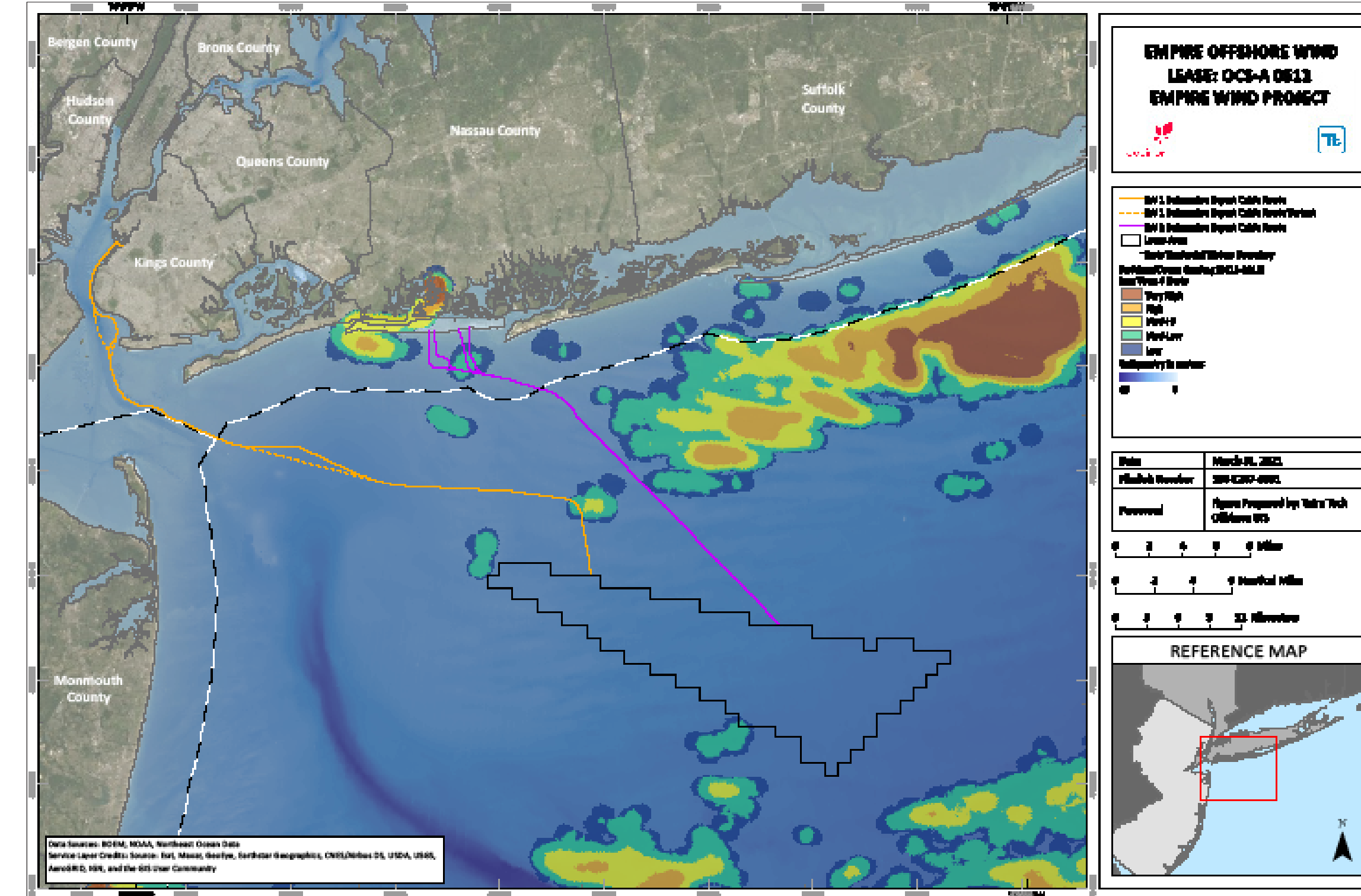


Empire Wind Project (EW1 and EW2)

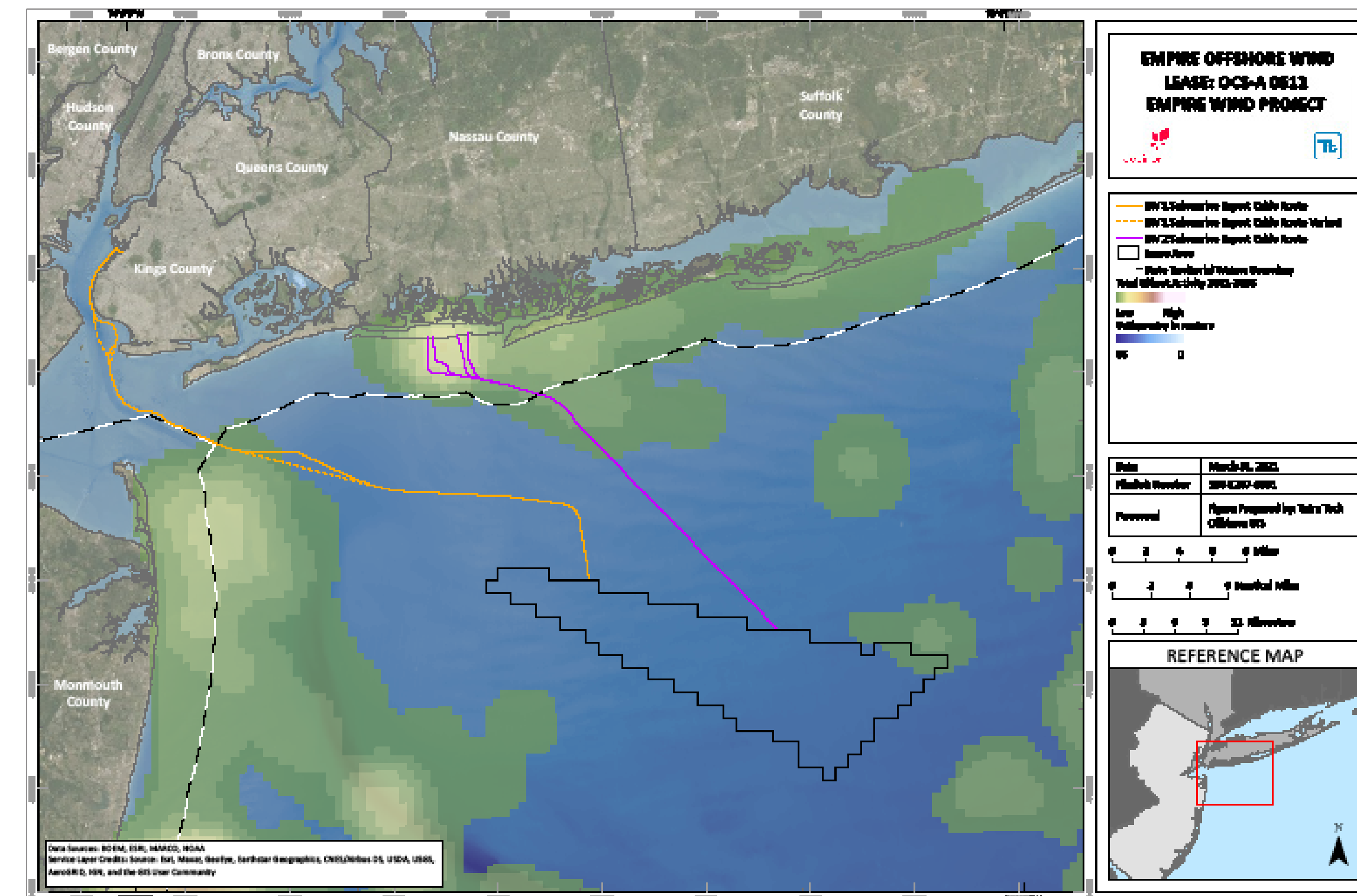
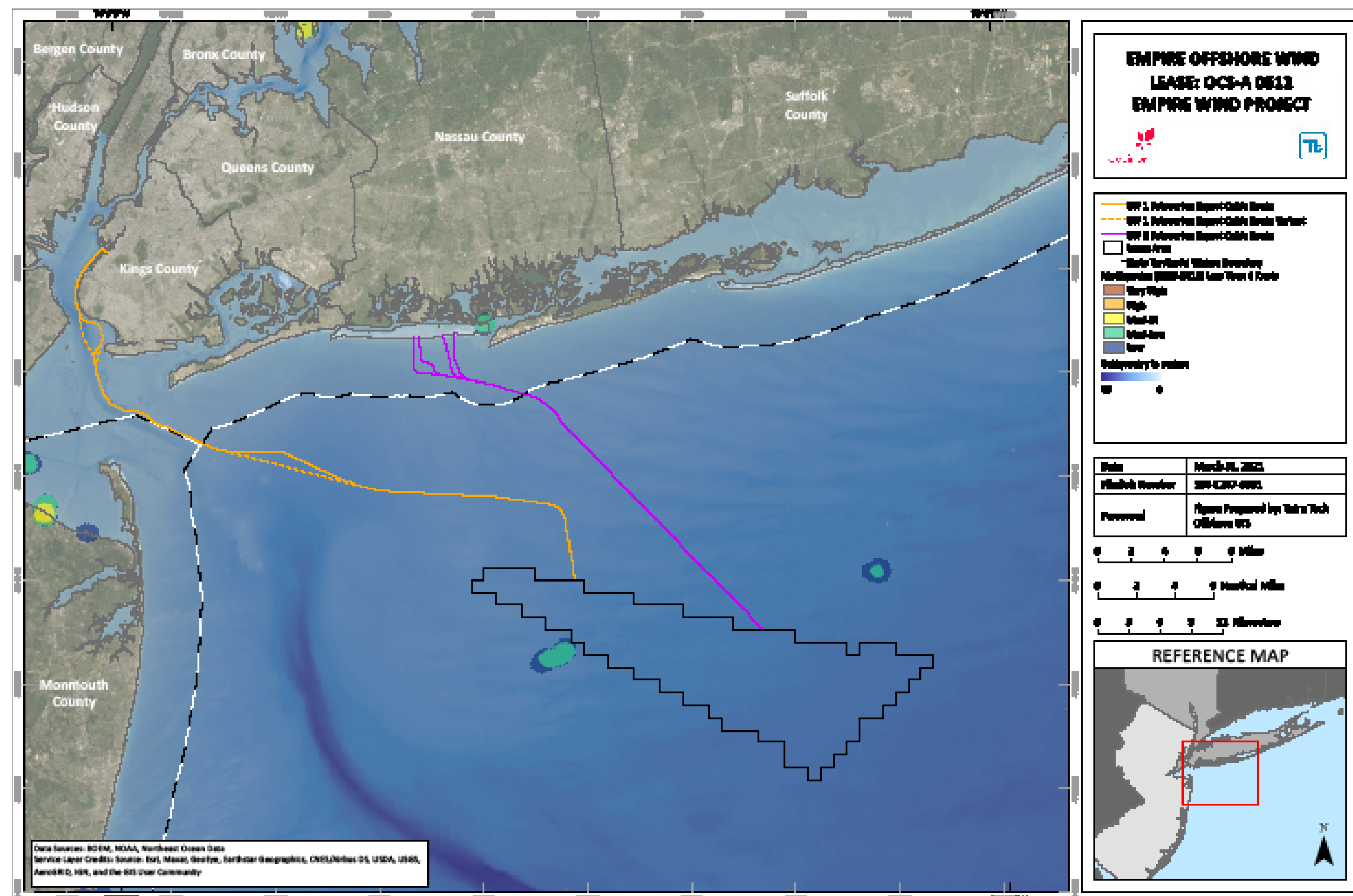
Commercial Fishing Density



Multi-species groundfish otter trawling at < 4 knots, 2015-2016 VMS Data (MARCO), shown at the regional scale (upper panel), and the Project Area scale (lower panel)



Surfclam/Quahog fishing activity at < 4 knots, 2015-2016 VMS Data (MARCO)



Gillnet activity at < 4 knots, 2011-2015 VTR Data (MARCO)