

Empire Wind Project (EW1 and EW2)

Potential Impacts to Commercial Fishing

Construction

- Displacement of fishing vessels during installation of WTGs/OSS and during cable laying
- Increased vessel traffic in ports and within offshore work areas

Operations

The long-term presence of Offshore Wind structures in the Lease Area could result in:

- Long-term space use conflicts for fishing and transiting within the Lease Area
- Increased risk of allision or collision for fishing vessels in the Lease Area
- Habitat modification in the Lease Area and along submarine export cable corridors
- Artificial reef effect may increase density of structure-oriented fish
- Potential for gear entanglement and loss due to interactions with exposed cables

Annual Revenue for Sea Scallop and Loligo Squid Fisheries

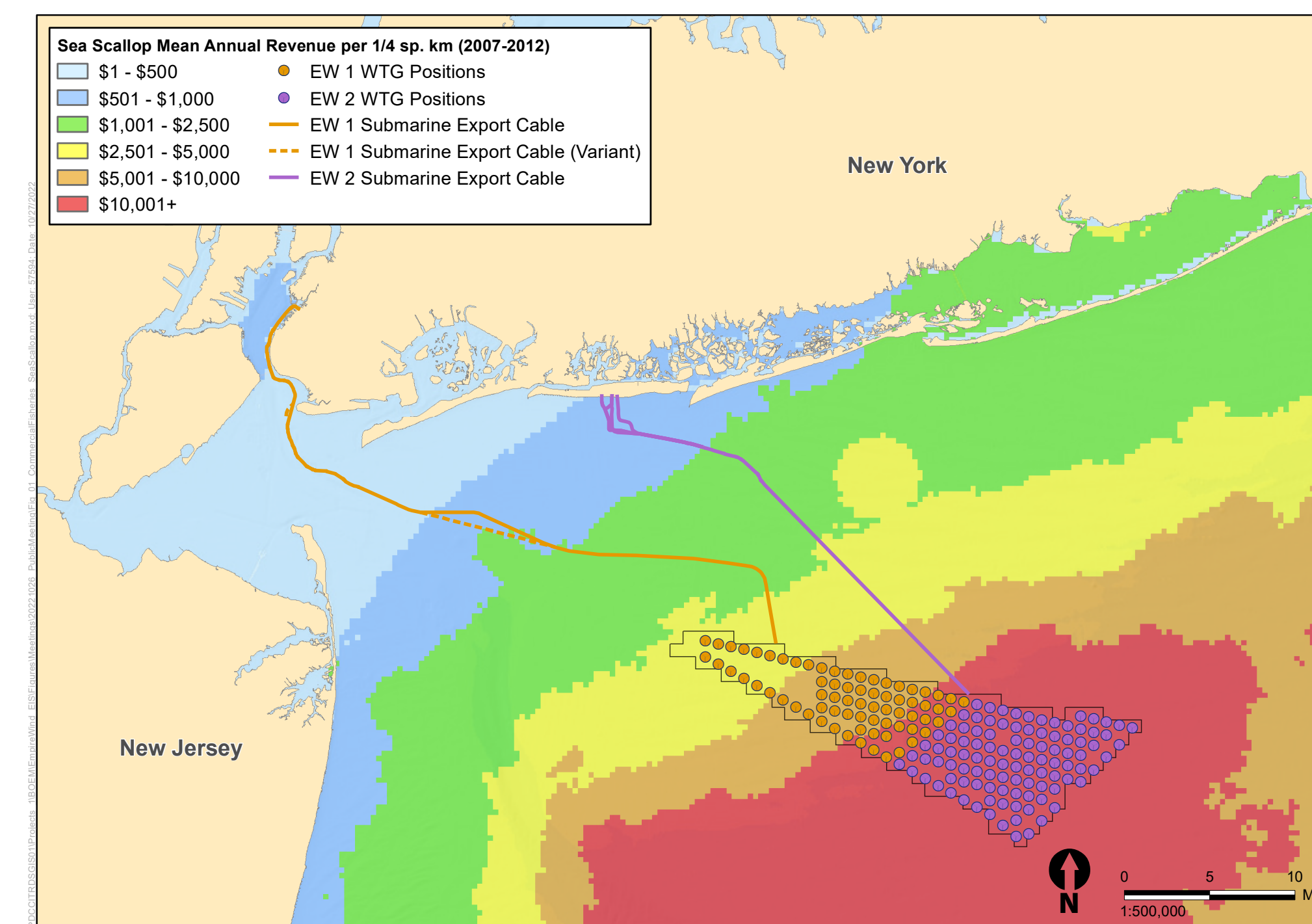


Figure 01
Commercial Fisheries - Sea Scallops

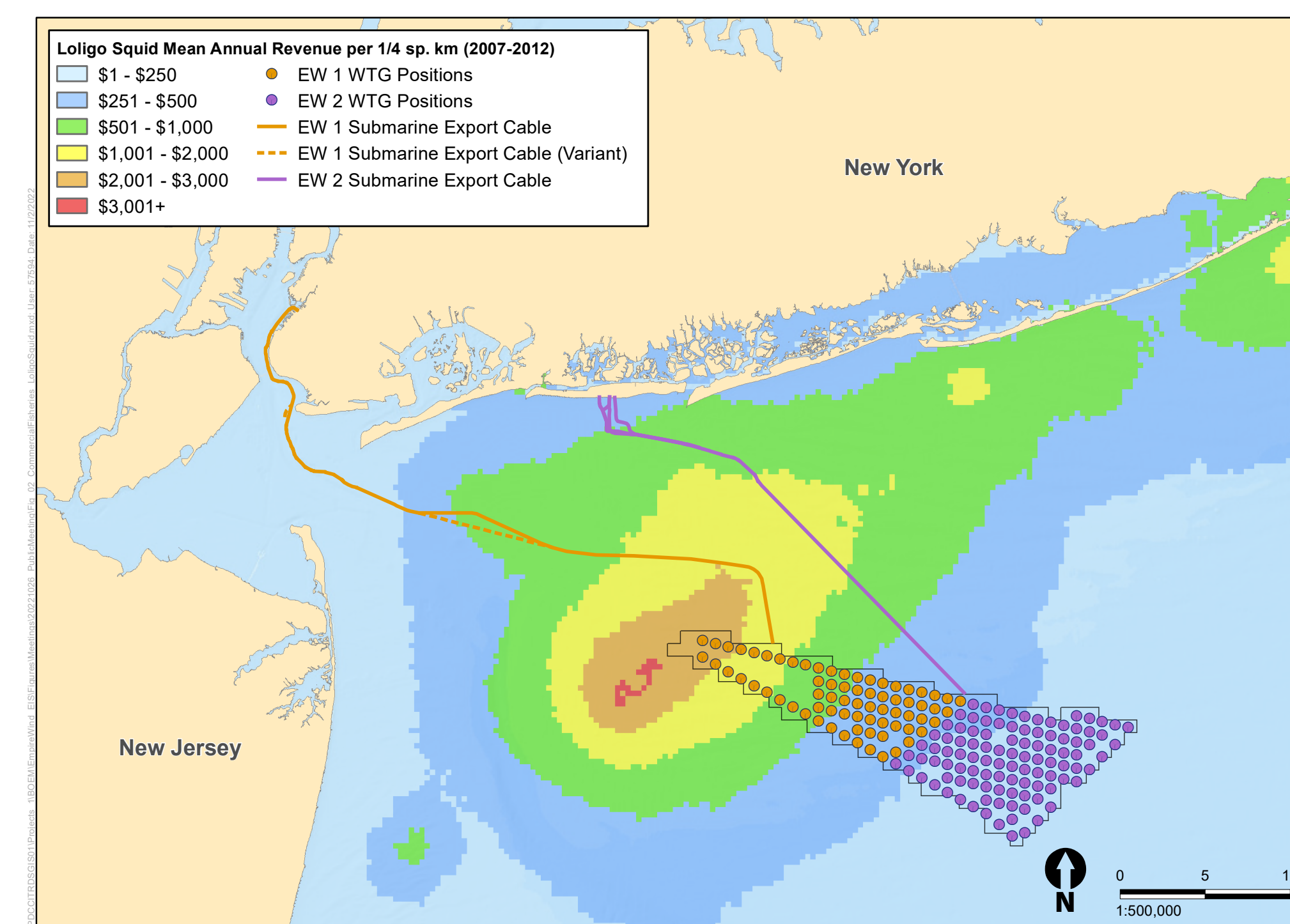


Figure 02
Commercial Fisheries - Loligo Squid