



Empire Wind Project (EW1 and EW2)

Area of Potential Effect and Identification of Historic Properties

What is the Area of Potential Effect (APE)?

The APE is a geographic area or areas within which an undertaking may directly or indirectly cause alterations in the character or use of historic properties, if any such properties exist.

Empire Wind has three categories of APE:

1. Terrestrial: the depth and breadth of terrestrial areas potentially impacted by any ground-disturbing activities.
2. Marine: the depth and breadth of the seabed potentially impacted by any bottom-disturbing activities.
3. Visual: the viewshed from which renewable energy structures, whether located offshore or onshore, would be visible.

What is a historic property?

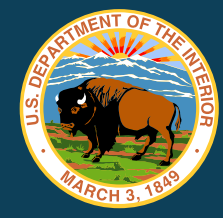
A historic property is a prehistoric or historic district, site, building structure, or object included in or eligible for inclusion in the National Register of Historic Places. Historic properties must:

- Be associated with significant historical events; or
- Be associated with the lives of persons significant in our past; or
- Embody a distinctive style, period, method of construction, or represent work of a master or possess high artistic values, or represent a district with components that may lack individual distinction; or
- Have yielded or may be likely to yield information important in history or prehistory.



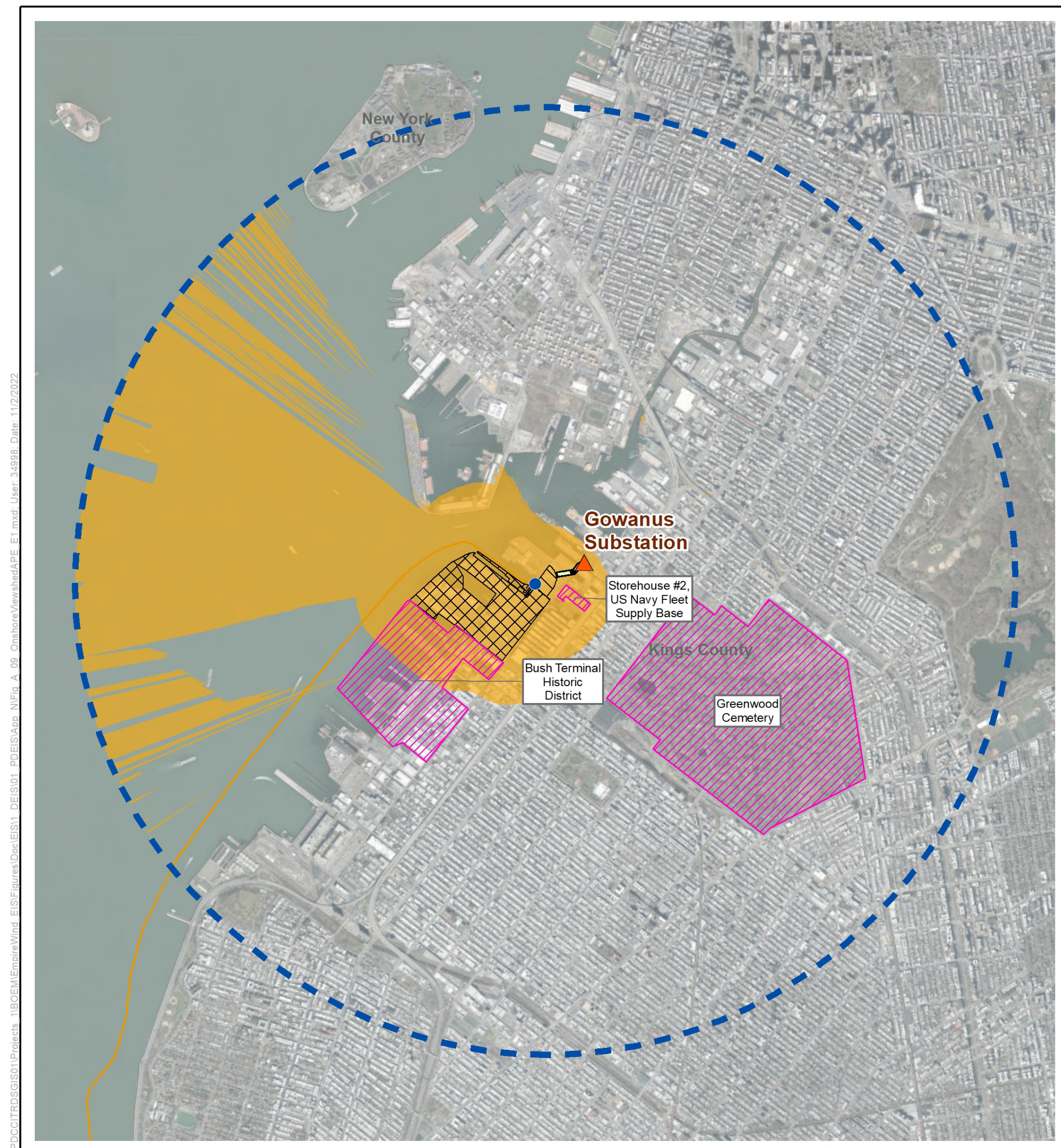
Fire Island Lighthouse



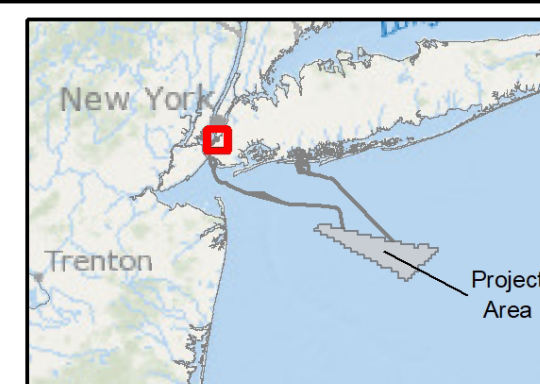


Empire Wind Project (EW1 and EW2)

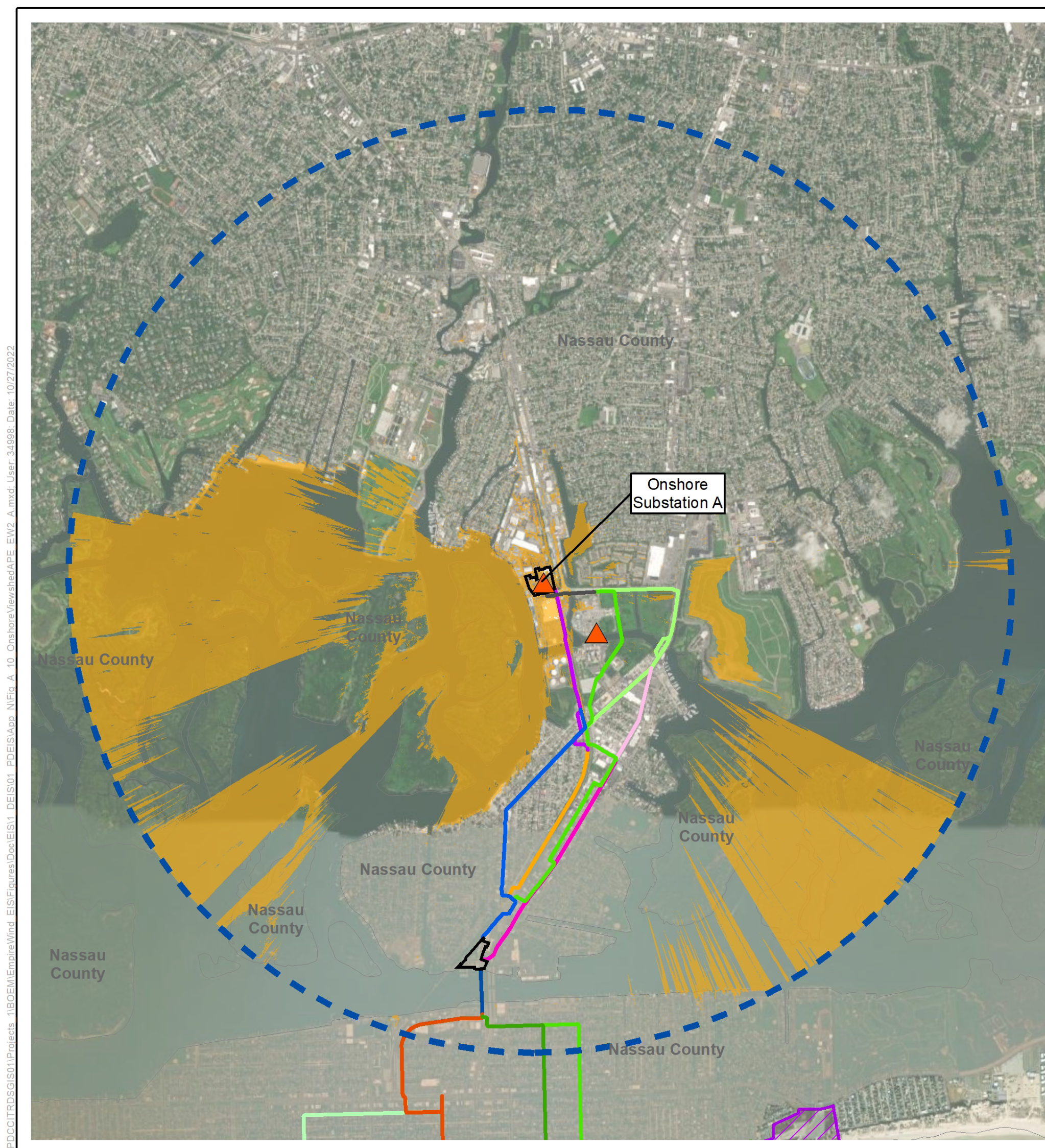
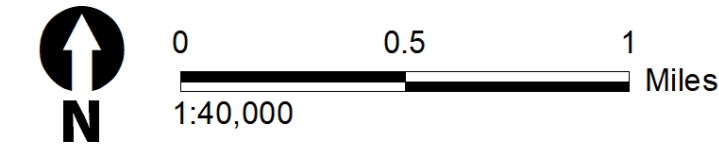
Area of Potential Effect (APE) for Onshore Analysis of Visual Effects to Historic Properties (AVEHP)



- Onshore Visual Area of Potential Effect
 - 2-Mile Facility Buffer
 - Historic Properties - No Adverse Effect
 - SBMT Connected Action
- Proposed Action: EW 1**
- Point of Interconnection
 - Cable Landfall
 - Interconnection Cable
 - EW 1 Submarine Export Cable
 - Onshore Substation



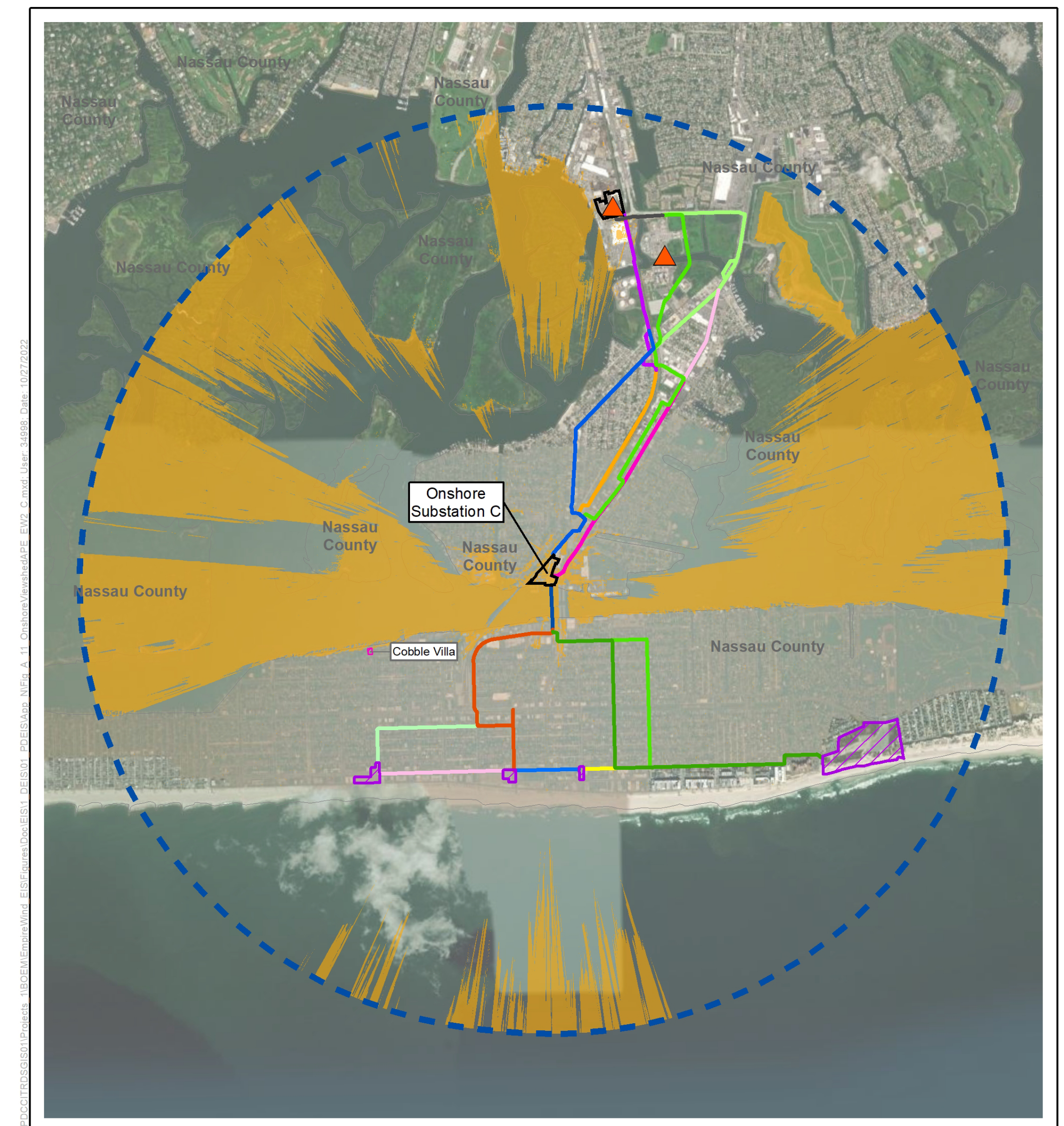
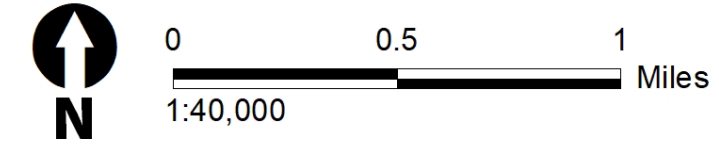
Source: BOEM 2022, Empire 2022.



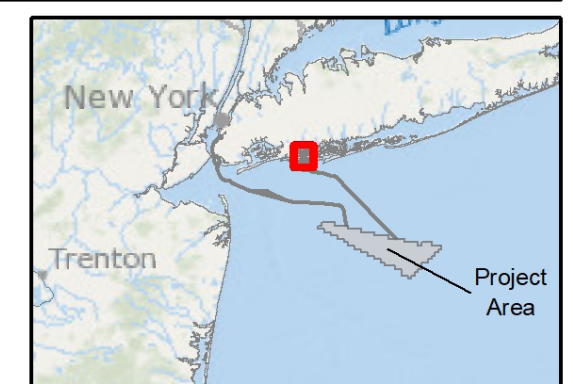
- EW 2 Onshore Substation
 - Substation A Viewshed
 - 2-Mile Facility Buffer
 - Point of Interconnection
 - Cable Landfall Site
- | | | | | | | | |
|------|------|------|------|------|-----------------------------------|------|------|
| IP-A | IP-B | IP-C | IP-D | IP-E | IP-F | IP-G | IP-H |
| LB-A | LB-B | LB-C | LB-F | LB-G | Reynolds Channel Crossing Feature | | |



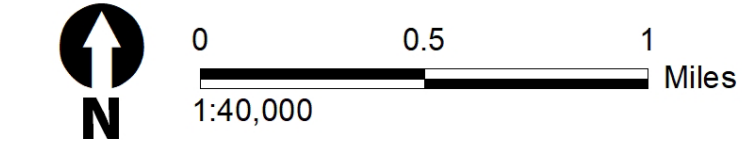
Source: BOEM 2022, Empire 2022.



- EW 2 Onshore Substation
 - Substation C Viewshed
 - 2-Mile Facility Buffer
 - Point of Interconnection
 - Cable Landfall Site
 - Historic Property - No Adverse Effect
- | | | | | | | | |
|------|------|------|------|------|------|------------|-----------------------------------|
| IP-A | IP-B | IP-C | IP-D | IP-E | IP-F | IP-G | IP-H |
| LB-A | LB-B | LB-C | LB-E | LB-F | LB-G | LB-Variant | Reynolds Channel Crossing Feature |



Source: BOEM 2022, Empire 2022.





Empire Wind Project (EW1 and EW2)

Terrestrial and Marine Archaeological, and Offshore Visual Effects Area of Potential Effect (APE)



Source: Empire 2022.

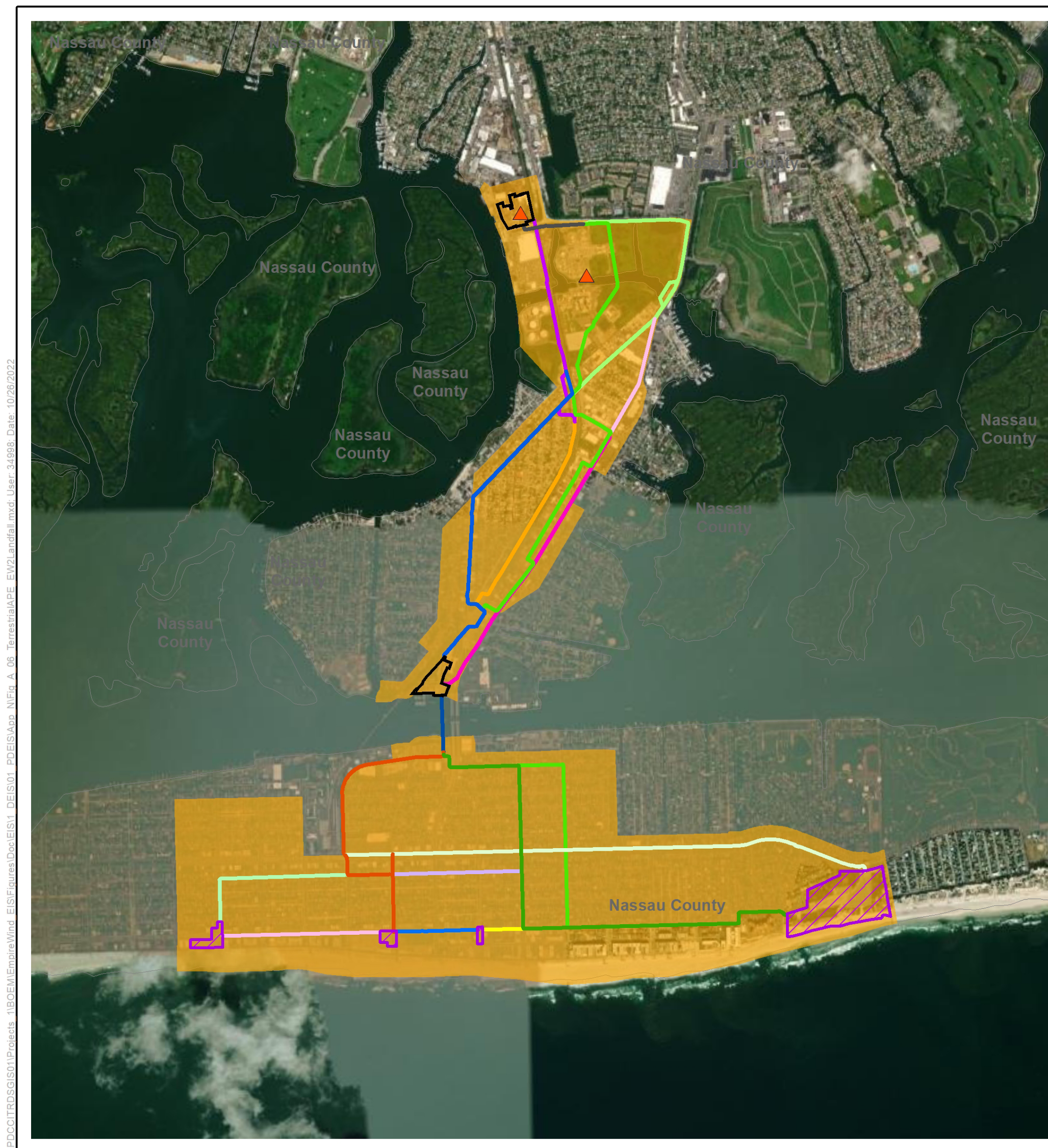
1:8,000

0 500 1,000 Feet

Legend:

- Point of Interconnection
- Cable Landfall
- Municipal Boundary
- Terrestrial Archaeology Area of Potential Effect
- SBMT Connected Action
- EW 1 Proposed Action
- Bulkhead Repair
- Dredge
- EW 1 Submarine Export Cable
- Onshore Substation

Empire Wind 1 and Connected Action Terrestrial Archaeological APE



Source: BOEM 2022, Empire 2022.

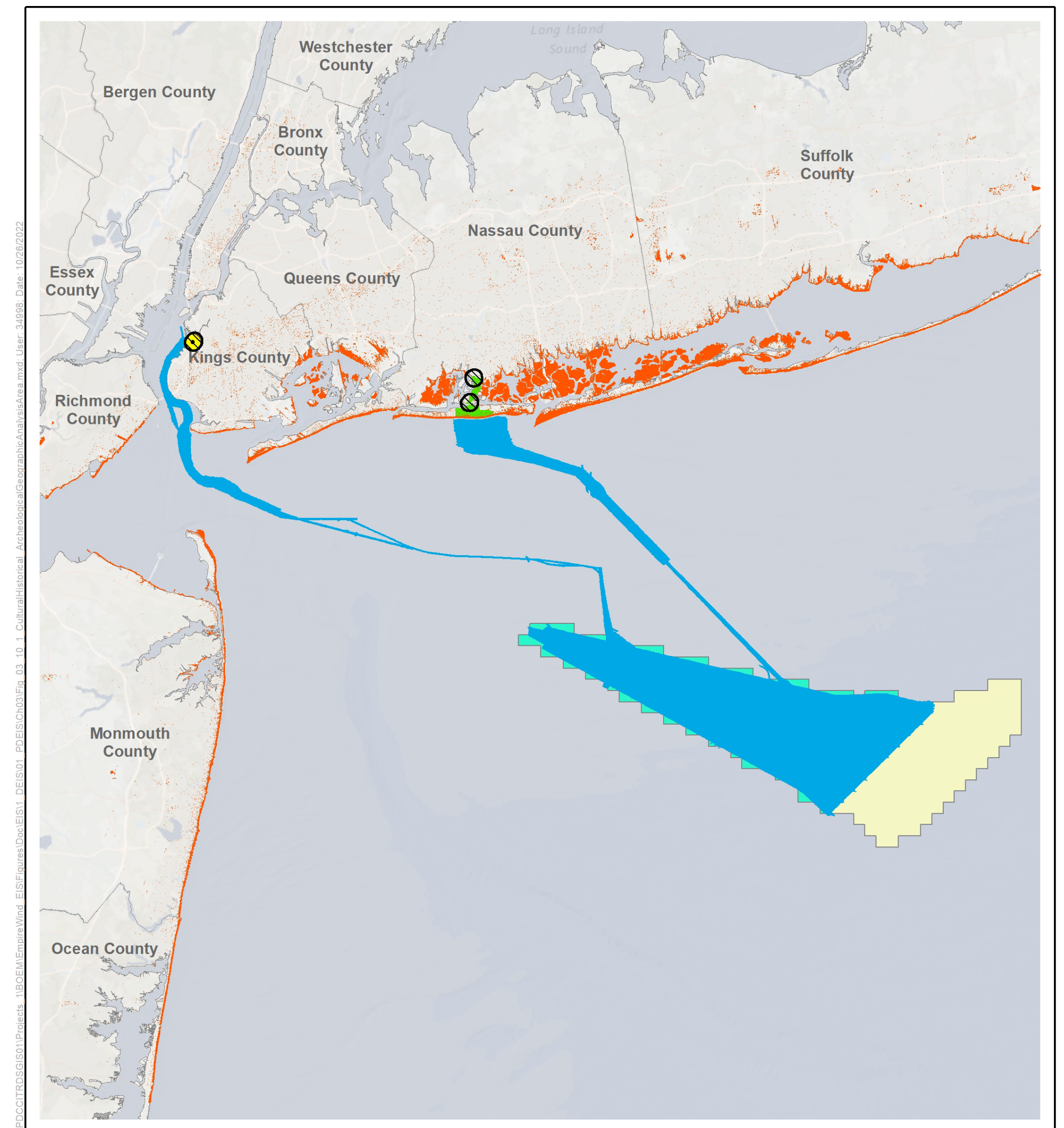
1:32,000

0 1,000 2,000 Feet

Legend:

- Onshore Interconnection Point
- EW 2 Onshore Substation
- Cable Landfall Site
- Terrestrial Archaeology Area of Potential Effect
- IP-A
- IP-B
- IP-C
- IP-D
- IP-E
- IP-F
- IP-G
- IP-H
- IP-A
- LB-A
- LB-B
- LB-C
- LB-D
- LB-E
- LB-F
- LB-G
- LB-H
- LB-Variant
- Reynolds Channel Crossing Feature

Empire Wind 2 Terrestrial Archaeological APE



Source: BOEM 2021.

1:600,000

0 5 10 Miles

Legend:

- Terrestrial Archaeology Area of Potential Effect
- Marine Archaeology Area of Potential Effect
- Area of Potential Effect for Onshore Visual Effects for Historic Properties
- Area of Potential Effect for Offshore Visual Effects for Historic Properties
- Empire Wind Lease Area (OCS-A 0512)
- Other BOEM Lease Areas
- O&M Facility

Marine Archaeological and Offshore Visual Effects APE