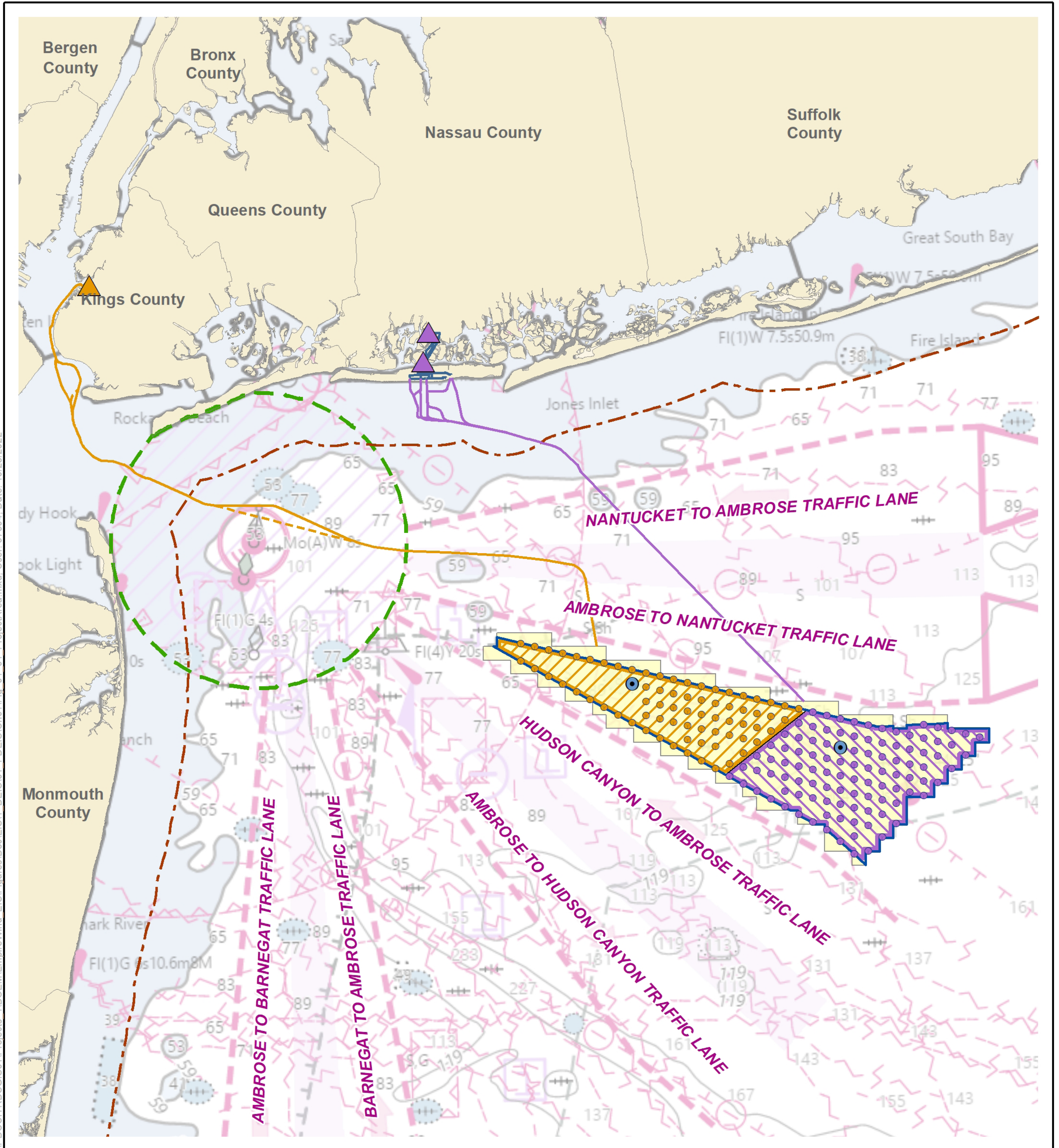




Empire Wind Project (EW1 and EW2)

# Empire Wind Project Area



- Wind Development Area
- Empire Wind 1 (EW 1)
- Empire Wind 2 (EW 2)
- Offshore Substation
- EW 1 Onshore Substation
- EW 2 Onshore Substation Option
- EW 1 WTG Positions (71)
- EW 2 WTG Positions (103)
- EW 1 Submarine Export Cable
- EW 1 Submarine Export Cable (Variant)
- EW 2 Onshore Export Cable
- EW 2 Submarine Export Cable
- Empire Wind Lease Area (OCS-A 0512)
- State Seaward Boundary
- Precautionary Area

Source: Empire 2022.

