



BOEM Bureau of
Ocean Energy Management

Gulf of Maine – Information Exchange

January 17-19, 2023

Zach Jylkka, Project Coordinator

Presentation Topics

- BOEM Planning & Leasing Process
- RFI Comment Period – Key themes
- Draft Call for Information & Nominations
Area “Draft Call Area”
- Gulf of Maine Leasing Timeline –
Next Steps for Engagement



Why are we here?

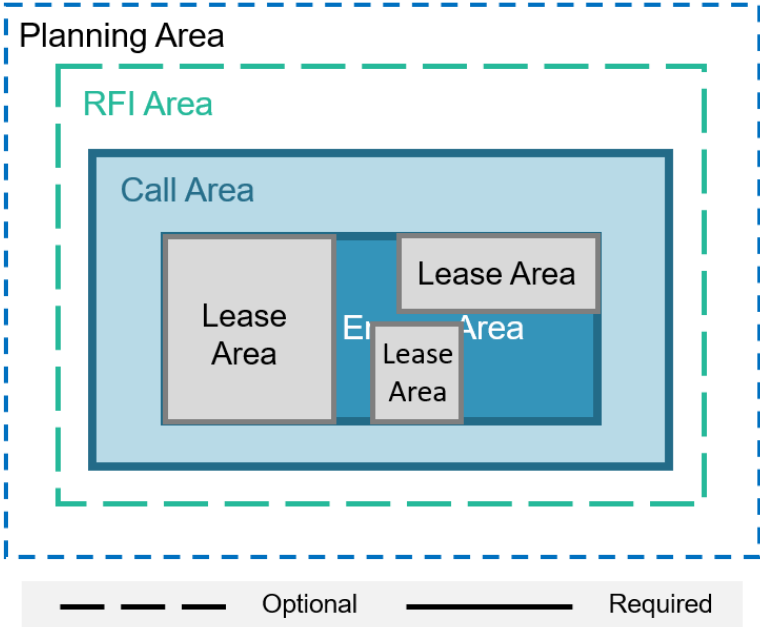
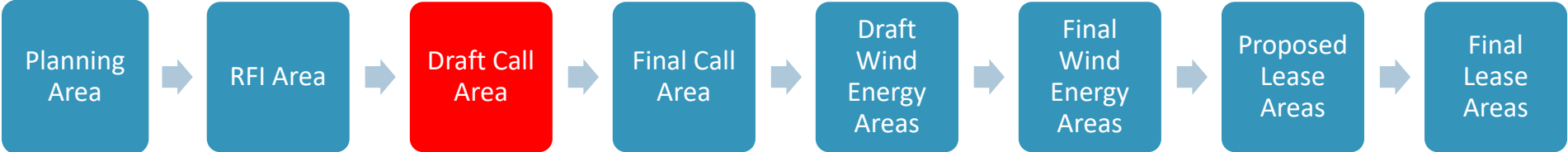
- Gulf of Maine Intergovernmental Renewable Energy Task Force
 - Requested by Governor Sununu in 2019
 - Two meetings to date: Dec. 2019 & May 2022
- State Renewable Energy Goals
- BOEM is working through renewable energy planning process



Illustration by Josh Bauer/NREL – Department of Energy



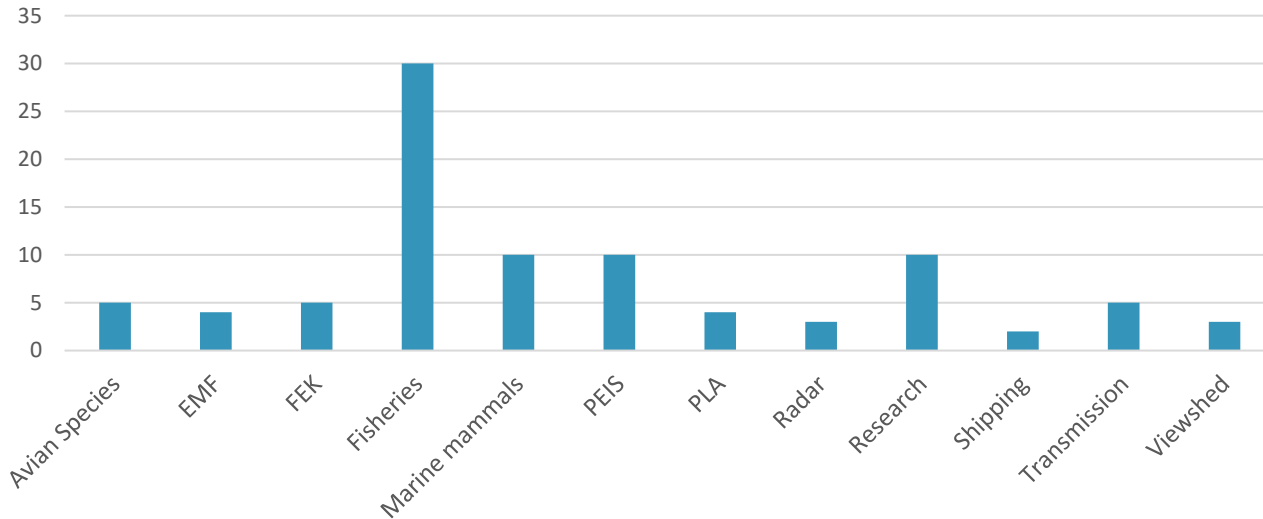
Gulf of Maine Planning Process



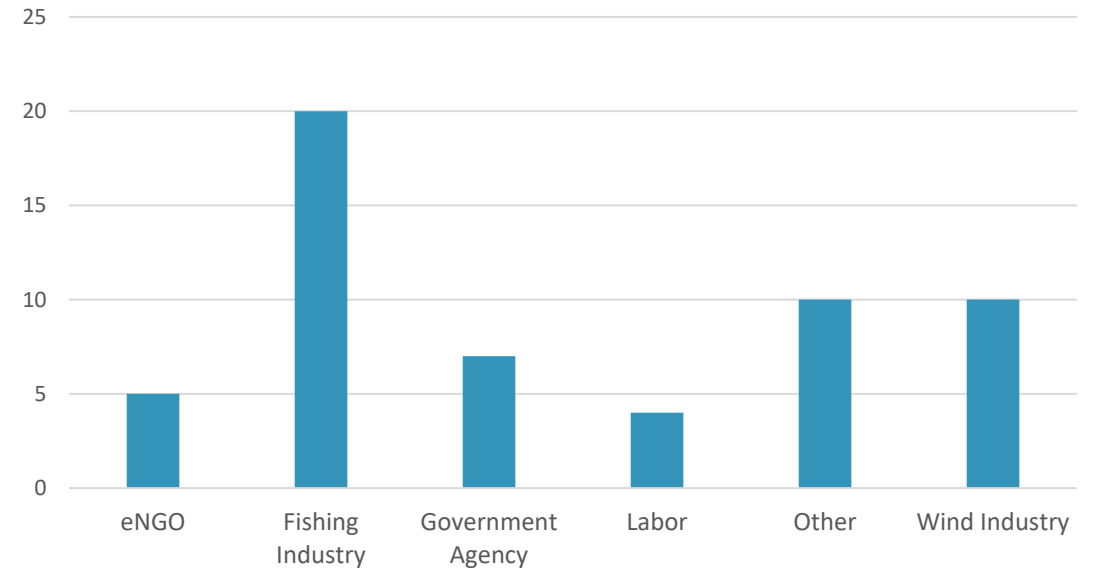
Request for Interest (RFI): What did we hear?

- 45-day comment period (August 19 – October 3, 2022): 53 unique comments*

Gulf of Maine RFI Comments: Topic Count



Gulf of Maine RFI: Who Commented

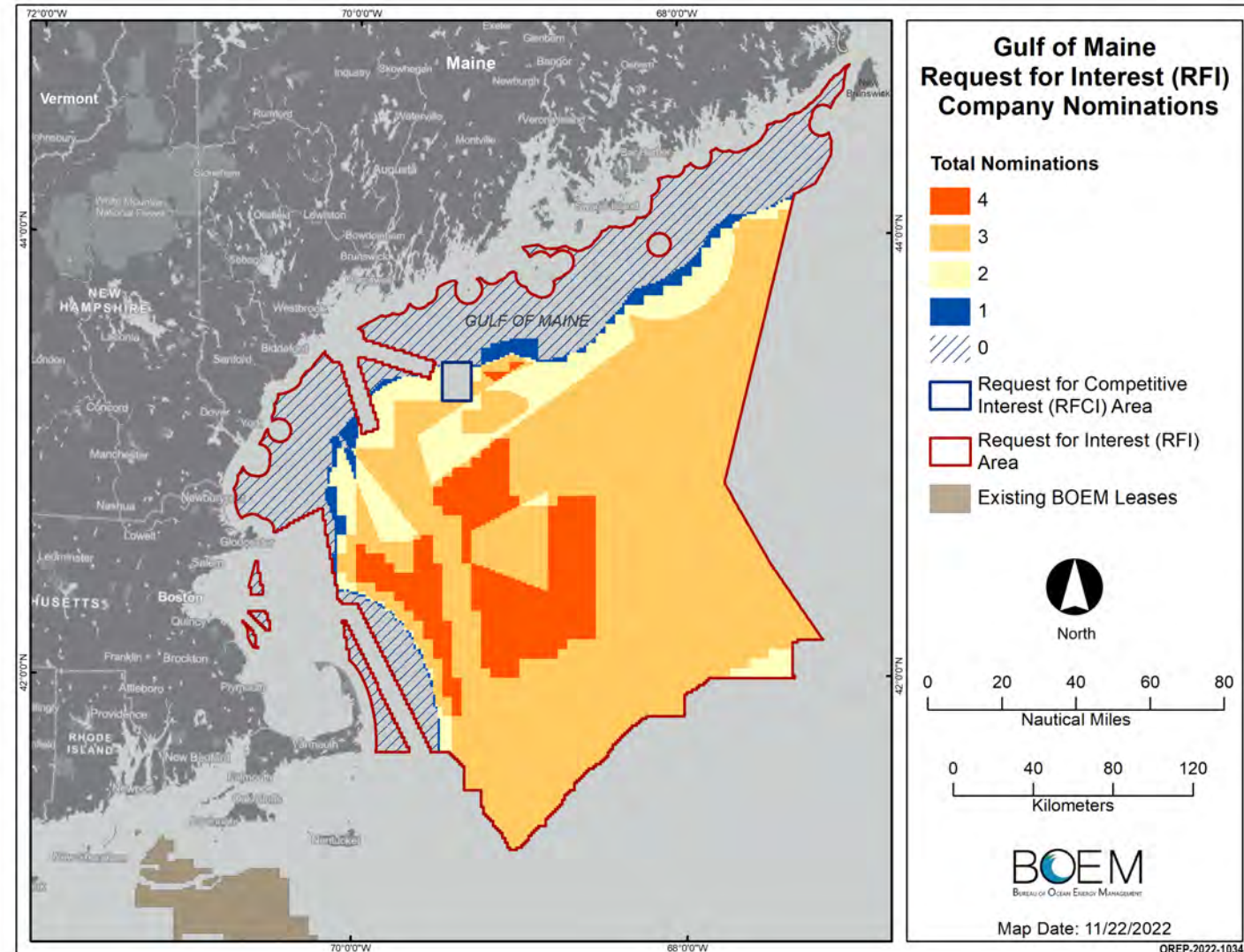


* Note: several RFI comments included multiple attachments, including letters from several individuals. Two duplicate entries were submitted.



RFI Comments: Wind Industry

- Received 5 indications of interest
 - Avangrid Renewables, LLC
 - Hexicon USA, LLC
 - Pine Tree Offshore Wind, LLC (RWE, Diamond)
 - TotalEnergies SBE US, LLC (TotalEnergies, Simply Blue)
 - US Mainstream Renewable Power
- Comment Themes
 - 20+ mi from shore (visual, fisheries)
 - 1-1.5 GW lease areas
 - Geographic variation of WEAs (proximity to different states/interconnection points)
 - General support for **backbone transmission**



RFI Comments: Jobs & Labor

- Comment Themes

- Support for:
 - Requirements to develop **domestic supply chain**
 - Union Jobs & Project Labor Agreements (PLA)
 - Investments in, and job opportunities for underserved communities
 - **Job Training**



RFI Comments: Fisheries

- Comments included emphasis on fisheries
 - Lobster, groundfish, tuna, scallop, recreational fishing
- Comment Themes:
 - Request for a **PEIS** to select WEAs
 - Request to let Maine **Research Array** advance first and inform future leasing
 - Advance **more studies** to understand baseline fisheries data
 - Incorporate Fishermen's Ecological Knowledge (**FEK**)
 - Emphasis on **avoiding, minimizing, and mitigating** any effects from potential leasing from the **beginning**
 - Concerns about electromagnetic fields (**EMF**)
 - Avoid leasing in **groundfish and habitat closures**



RFI Comments: Protected Species and Habitat

○ Comment Themes

- Avoid leasing in:
 - Habitat Management Areas (**HMA**s), Coral Protection Areas (**CPA**s), year-long **groundfish closures**; foraging and nesting areas of nesting/roosting seabirds; Atlantic Large Whale Take Reduction Plan (ALWTRP) Restricted Areas; dedicated research areas.
- Consider in analysis:
 - High **biodiversity areas** of marine mammals/birds
 - Highly persistent areas of fish and invertebrate **diversity and productivity**
 - Areas of **seafloor/habitat complexity**
 - **Upwelling** areas
 - **Spawning** areas for cod
- Recommendations for avoiding/minimizing **entanglement risk** in floating wind farms



Photo Credit: NMFS (North Atlantic Right Whale)

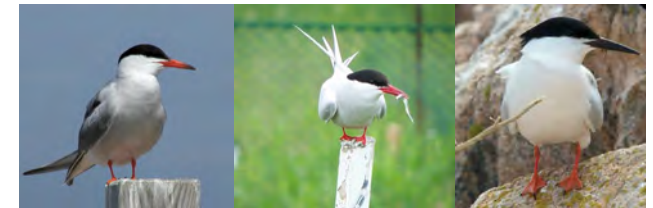


Photo Credit: USFWS (Common, Arctic, and Roseate Terns)



RFI Comments: Shipping/Navigation

○ Comment Themes

- USCG outlined recommended exclusion areas to ensure **safety of navigation** (outside of Boston Harbor).
- USCG gave timeline of the draft **MNMPARS report** (now available).
- World Shipping Council Request to provide 4 nautical mile wide **buffer zone** on either side of the centerline of a **shipping route**





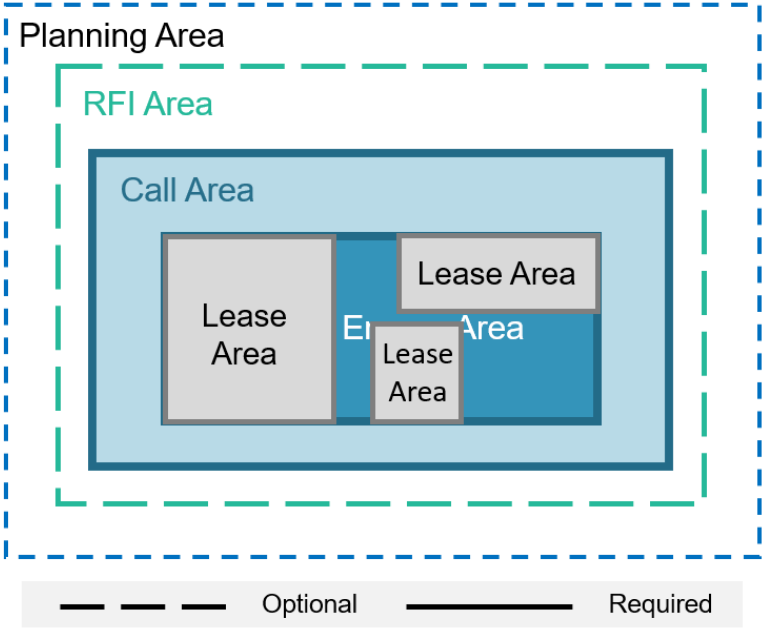
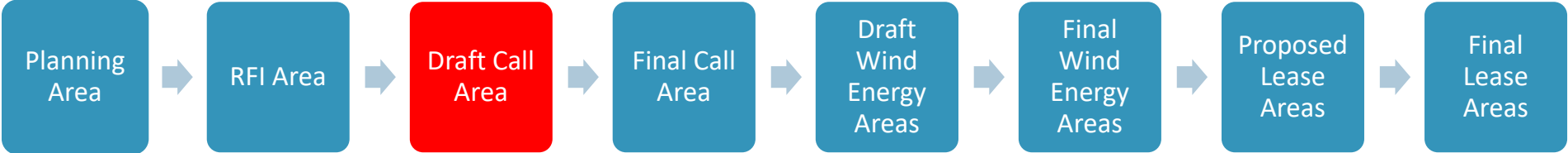
BOEM Bureau of
Ocean Energy Management

Gulf of Maine – Draft Call Area

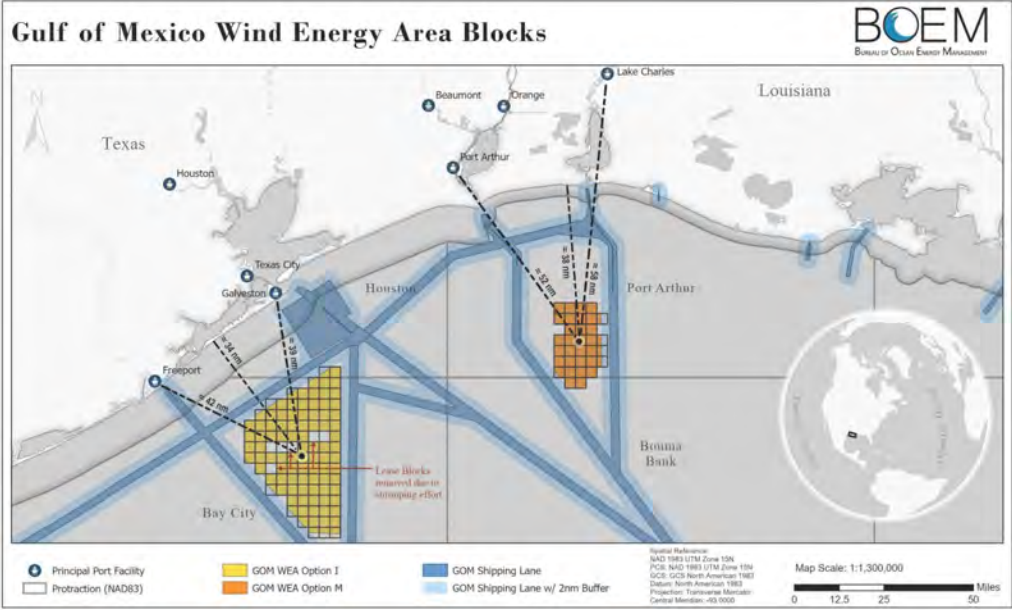
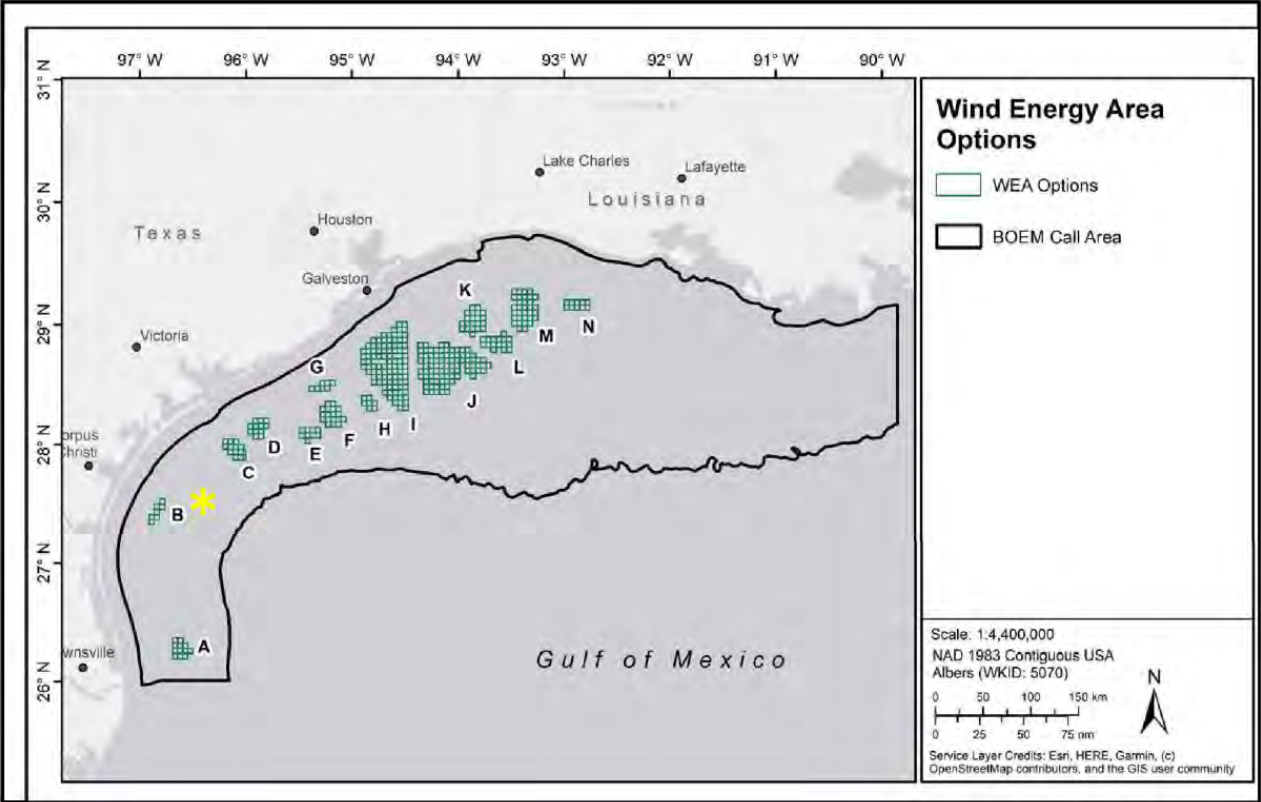
January 17-19, 2023

Zach Jylkka, Project Coordinator
Zachary.Jylkka@BOEM.gov

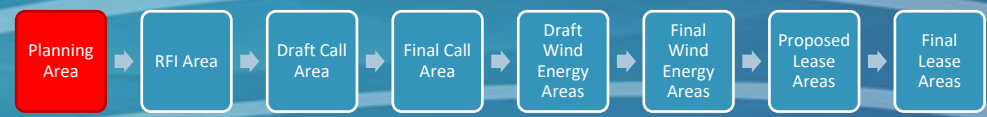
Gulf of Maine Planning Process



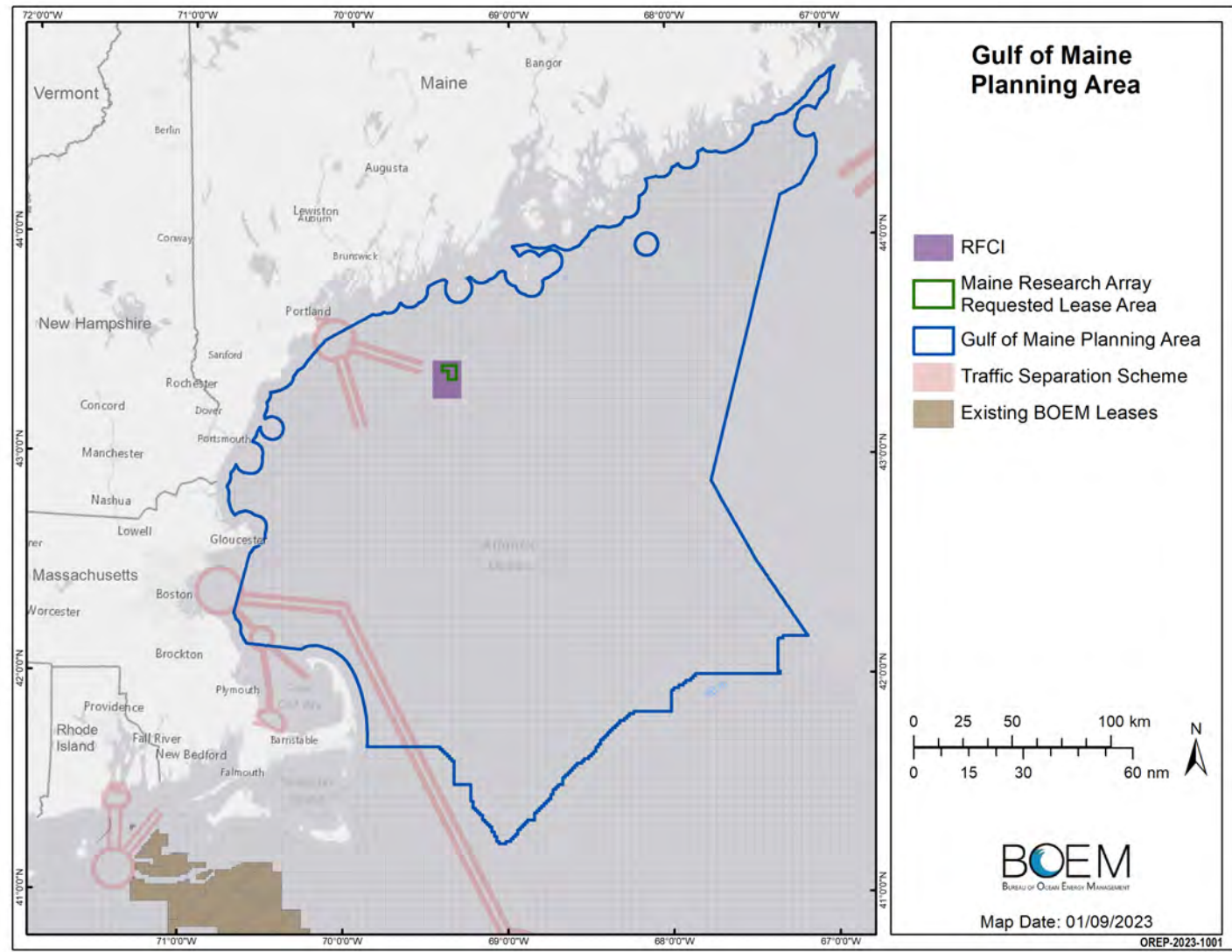
Gulf of Mexico Example



Planning Area



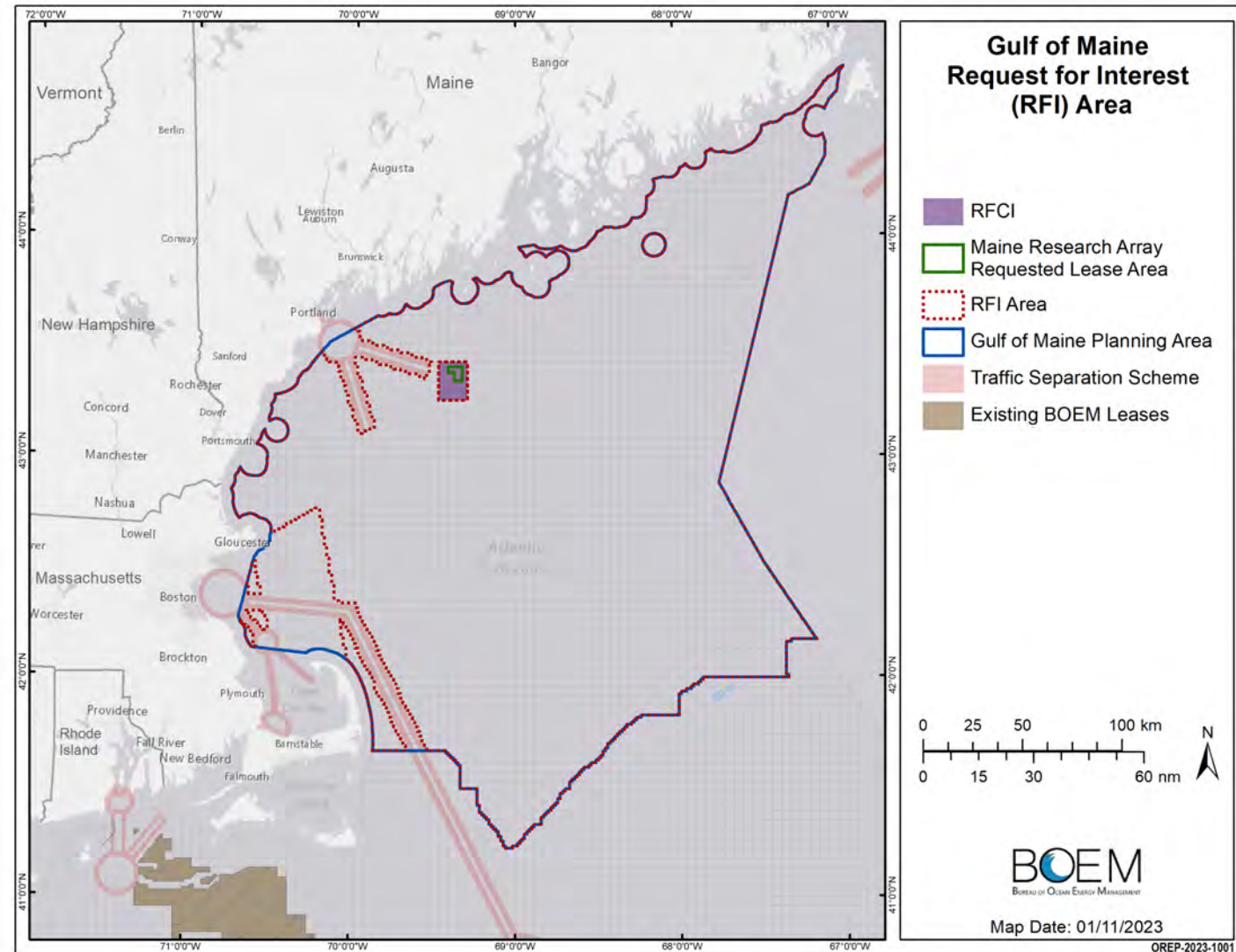
- Preliminary and optional step in the BOEM Planning Process



RFI Area



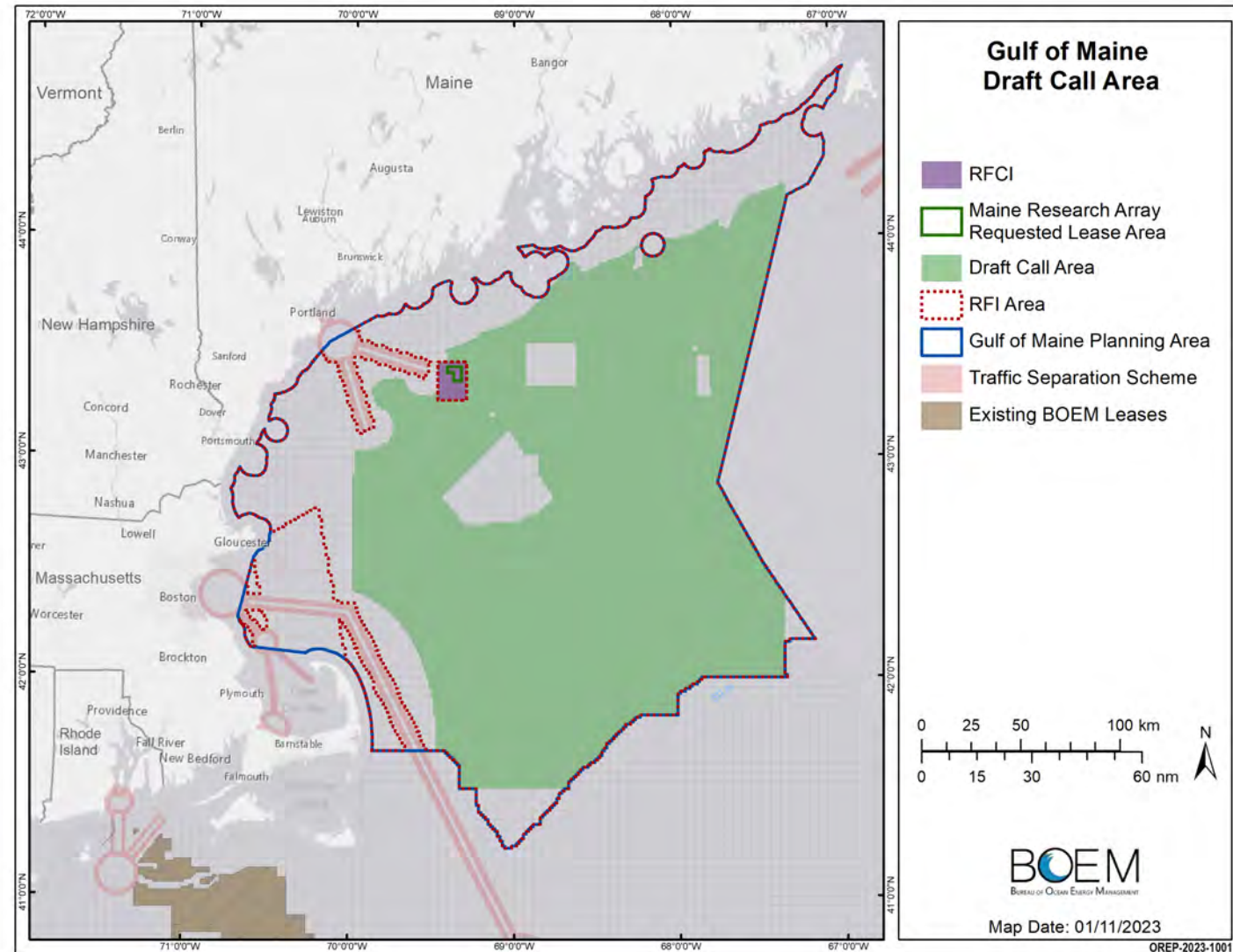
- Shared Draft RFI Area at May 2022 Task Force Meeting
- Published RFI on August 19, 2022
 - 45-day comment period closed October 3, 2022
- RFI Area removed “incompatible areas”
 - National Park System, National Wildlife Refuge System, **National Marine Sanctuary System**, or any National Monument (§585.204)
 - **Existing Traffic Separation Schemes (TSS)**, fairways, or other internationally recognized navigation measures
 - **Unsolicited lease request areas** that are the subject of a separate request for competitive interest



Draft Call Area



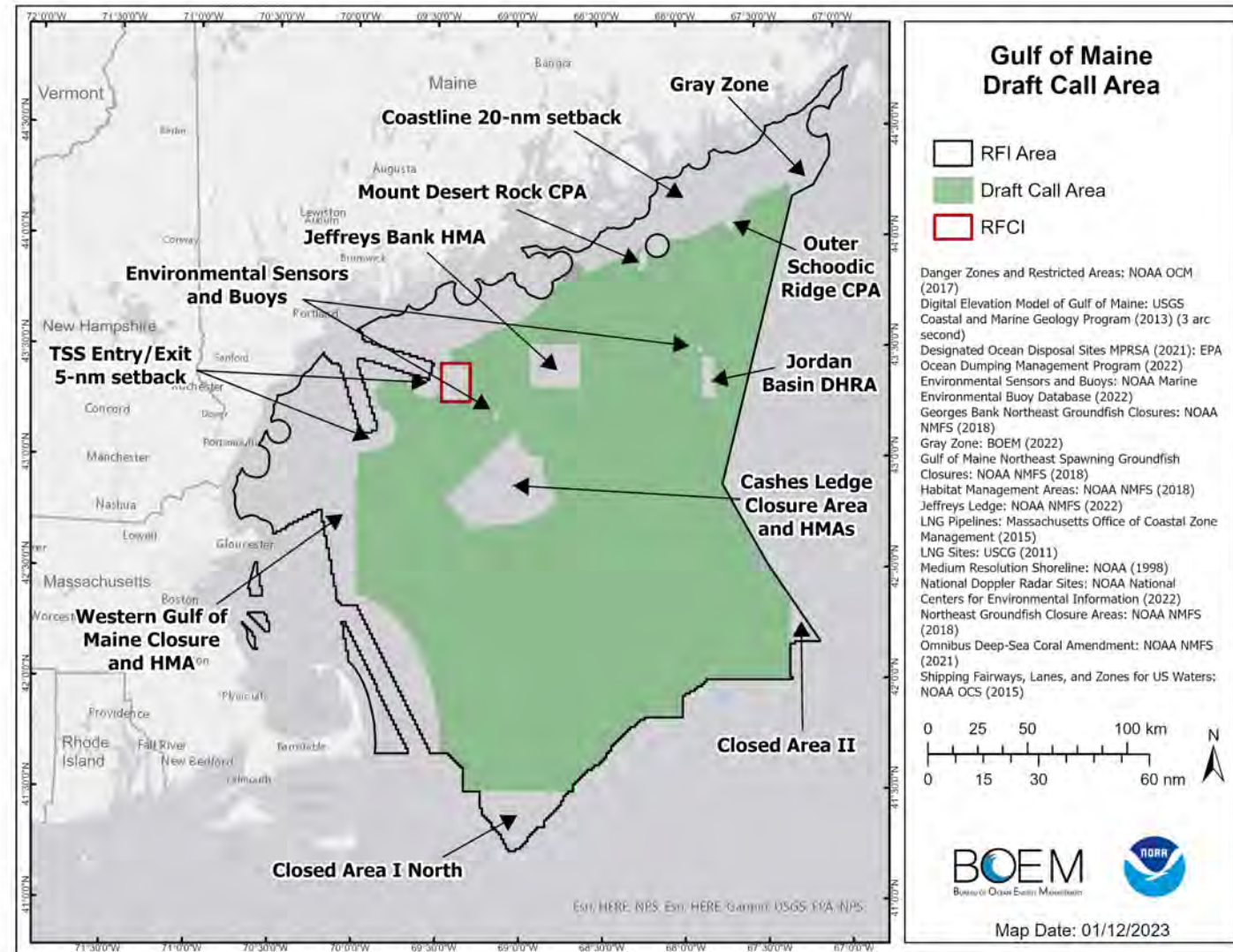
- BOEM reviewed responses to RFI and worked with NOAA NCCOS to conduct spatial analysis to inform Draft Call Area
 - 27% reduction from RFI Area



Draft Call Area: Explained



Data Layer	Acres Constrained
Coastline (20nm setback)	2,470,690
Groundfish Closure Areas (Cashes Ledge Closure Area, Western Gulf of Maine Closure Area, and Closed Area II)	804,780
Habitat Management Areas (HMAs) and Coral Protection Areas (CPAs)	792,070
TSSs (2nm recommended buffer/setback from sides)	266,870
Closed Area I North	197,070
TSSs (5nm recommended buffer/setback from entry)	182,230
Gray Zone	155,190
Jeffreys Ledge (depths shallower than 120 m)	154,810
Jordan Basin Dedicated Habitat Research Area	26,960
Gulf of Maine Cod Spawning Protection Area	23,780
Radar Sites/Zones	20,950
EPA Ocean Disposal Sites	5,740
Danger and Restricted Zones	4,710
Environmental Sensors and Buoys	1,840
LNG Sites and Pipelines	1,150
All Constraints Combined*	3,684,090



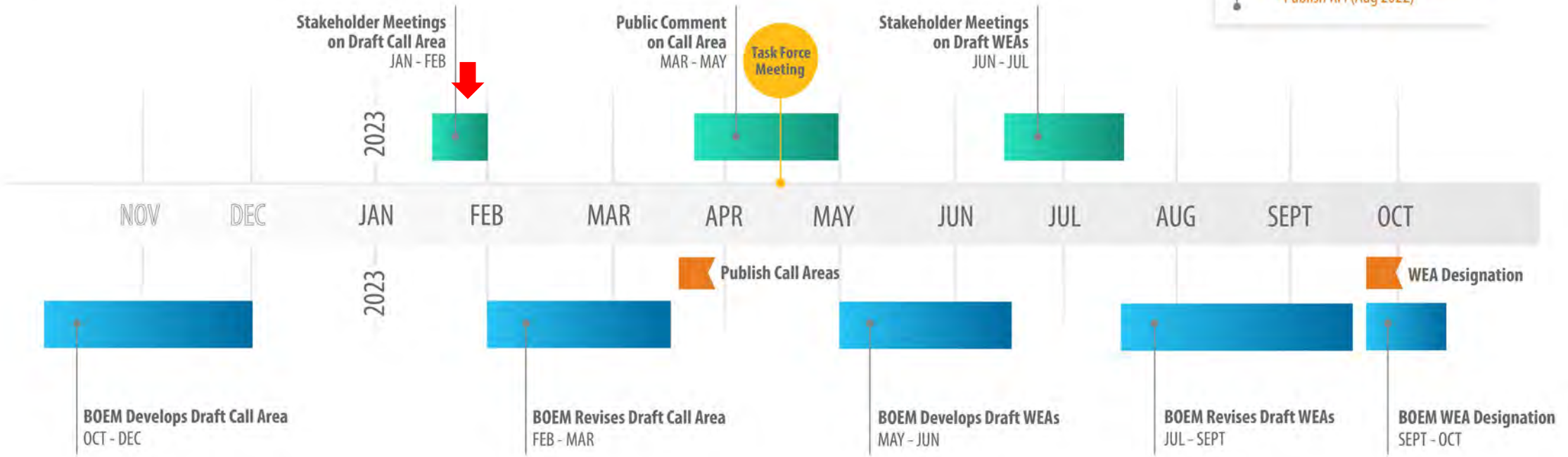
*Many of the “constraints layers” overlapped (e.g., the 20 nm coastline setback encompassed all EPA Ocean Disposal Sites), and therefore, “All Constraints Combined” is not simply a sum of the “Acres Constrained” listed above, but instead represents the total acres removed from the RFI Area. This acreage total increased slightly to 3,749,985 acres removed when BOEM defined the Draft Call Area using OCS blocks and aliquots.

Next Steps and Engagement Opportunities

Gulf of Maine Path to Wind Energy Area (WEA) Designation

Prior Milestones

- Task Force Meeting #1 (Dec 2019)
- Task Force Meeting #2 (May 2022)
- Publish RFI (Aug 2022)



NOTE: The dates of proposed meetings and planning/leasing milestones are all tentative.

Engagement Opportunities BOEM Activities

BOEM Bureau of Ocean Energy Management

as of January 2023



BOEM/NOAA NCCOS Partnership

- On September 16, 2022, BOEM announced that it was enhancing its process to identify future Wind Energy Areas (WEAs).
 - Incorporation of the best available science and modeling, including application of NOAA NCCOS spatial modeling. To achieve this, leveraging much of the data in the NE Ocean Data Portal.
 - Commitment to providing draft WEAs for public comment prior to completion of Area ID.



Gulf of Maine: Commercial Leasing Milestones

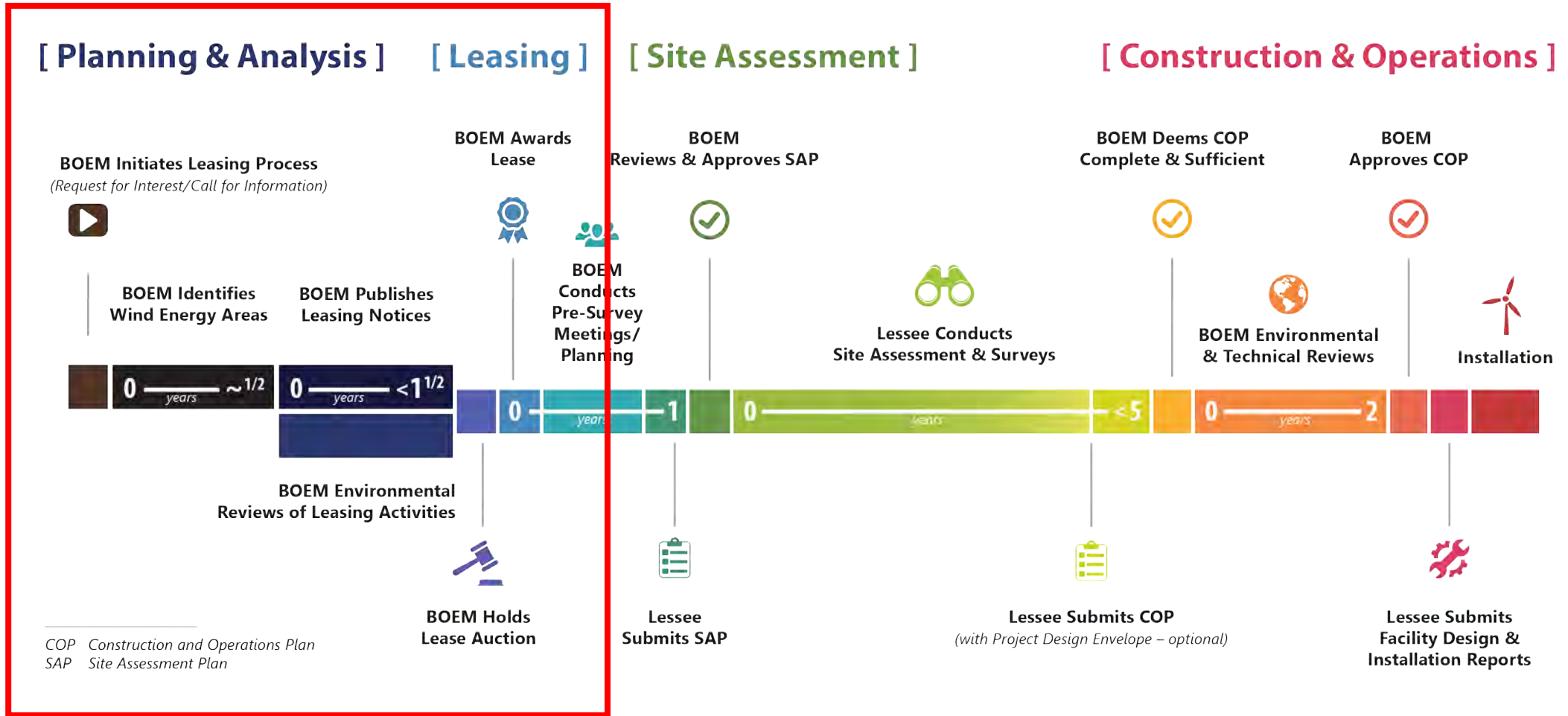
Milestone*	Action	Target Date**
Publish Request for Interest	Publish RFI <i>45-Day Comment Period</i>	Q3 2022
Publish Call for Information & Nominations	Publish Call <i>45-Day Comment Period</i>	Q1 2023
Area Identification	Designate Wind Energy Areas (WEAs)	Q3 2023
Lease Sale	Proposed Sale Notice (PSN)	Q4 2023
	Final Sale Notice (FSN)	Q2 2024
	Hold auction	Q3 2024

* Task Forces are incredibly valuable tools in the leasing process and **additional meetings** can be expected, likely to be scheduled around significant process milestones.

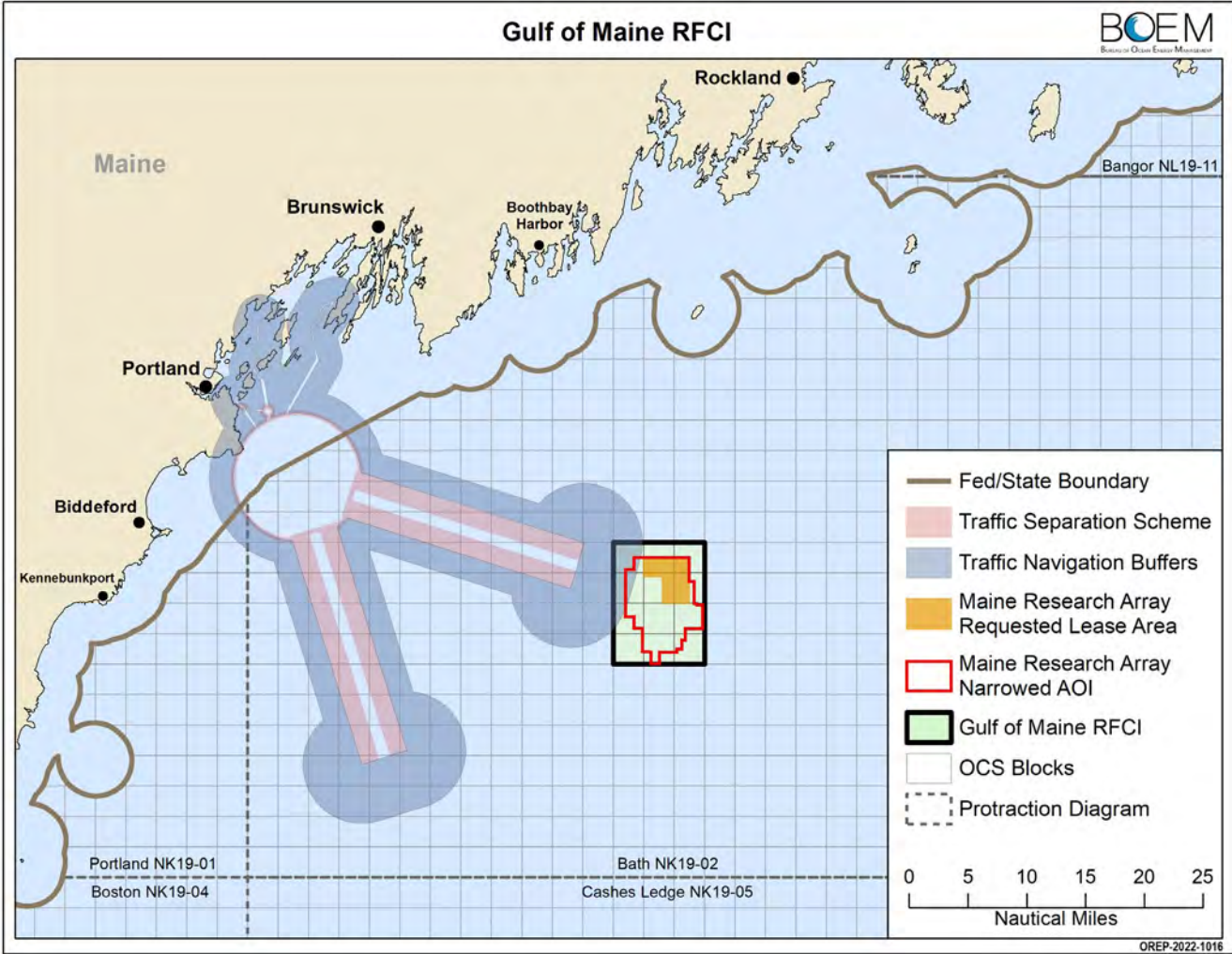
** Dates of planning/leasing milestones are all tentative.



Renewable Energy Authorization Process



Maine Research Lease Application



Maine Research Lease Application

Starting the Planning Process in the Gulf of Maine: First Steps

Commercial Track

Request For Interest (RFI)

Non-Competitive Leasing Process: Commercial Lease



Request For Competitive Interest (RFCI)

Non-Competitive Leasing Process: Research Lease



Research Track

AUGUST 2022



BOEM

Bureau of Ocean Energy
Management

BOEM.gov



Zach Jylkka | Zachary.Jylkka@boem.gov | (978) 491-7732



BOEM Bureau of
Ocean Energy Management

Gulf of Maine – Plenary Discussion

January 17-19, 2023

Zach Jylkka, Project Coordinator



BOEM Bureau of
Ocean Energy Management

Gulf of Maine – Next Steps

January 17-19, 2023

Zach Jylkka, Project Coordinator

Gulf of Maine – Draft Call Area Information Exchanges

- In-Person Information Exchanges:
 - January 17: Salem, MA; 4-7 pm (Salem State University)
 - January 18: Portsmouth, NH; 5-8 pm (NH DES)
 - January 19: Portland, ME; 5-8 pm (Holiday Inn, Portland-by the Bay)
- Virtual Information Exchanges:
 - *Shipping & Commercial Maritime*: January 25; 2-4pm
 - *Fisheries Meetings*
 - Maine Fisheries (Fixed Gear Focus): January 27; 10am-12pm
 - Mobile Gear: January 30; 10am-12pm
 - Recreational and HMS: January 30; 2-4pm
 - Fixed Gear (MA/NH Focus): January 31: 5-7pm
 - *Environmental NGOs*: January 31; 10am-12pm

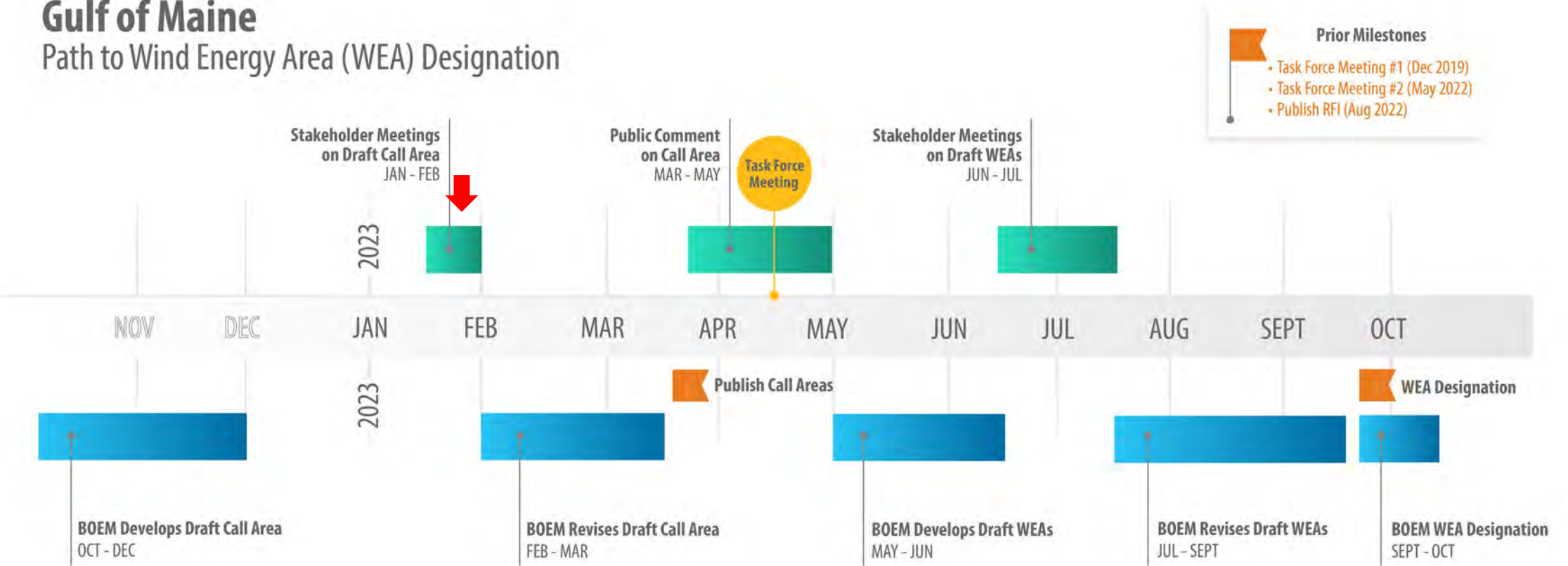


<https://www.boem.gov/renewable-energy/state-activities/gulf-maine-draft-call-area-engagement-meetings>



Next Steps and Engagement Opportunities

Gulf of Maine Path to Wind Energy Area (WEA) Designation



- Prior Milestones**
- Task Force Meeting #1 (Dec 2019)
 - Task Force Meeting #2 (May 2022)
 - Publish RFI (Aug 2022)

NOTE: The dates of proposed meetings and planning/leasing milestones are all tentative.

Engagement Opportunities BOEM Activities

BOEM Bureau of Ocean Energy Management

as of January 2023





Renewable Energy

BOEM facilitates the responsible development of renewable energy resources on the Outer Continental Shelf.

[Read More](#)

The screenshot shows a BOEM email subscription form. At the top is the BOEM logo. Below it, the text reads: "Please select your BOEM topic interests and join our mailing lists below." A "Privacy Act Statement" follows, explaining that BOEM requests email addresses for announcements and that the collection is authorized under E.O. 12958. The form includes input fields for "Email Address", "First Name", and "Last Name".

Contact Us



BOEM.gov



THANK YOU



BOEM

Bureau of Ocean Energy
Management

BOEM.gov



Zach Jylkka | Zachary.Jylkka@boem.gov | (978) 491-7732