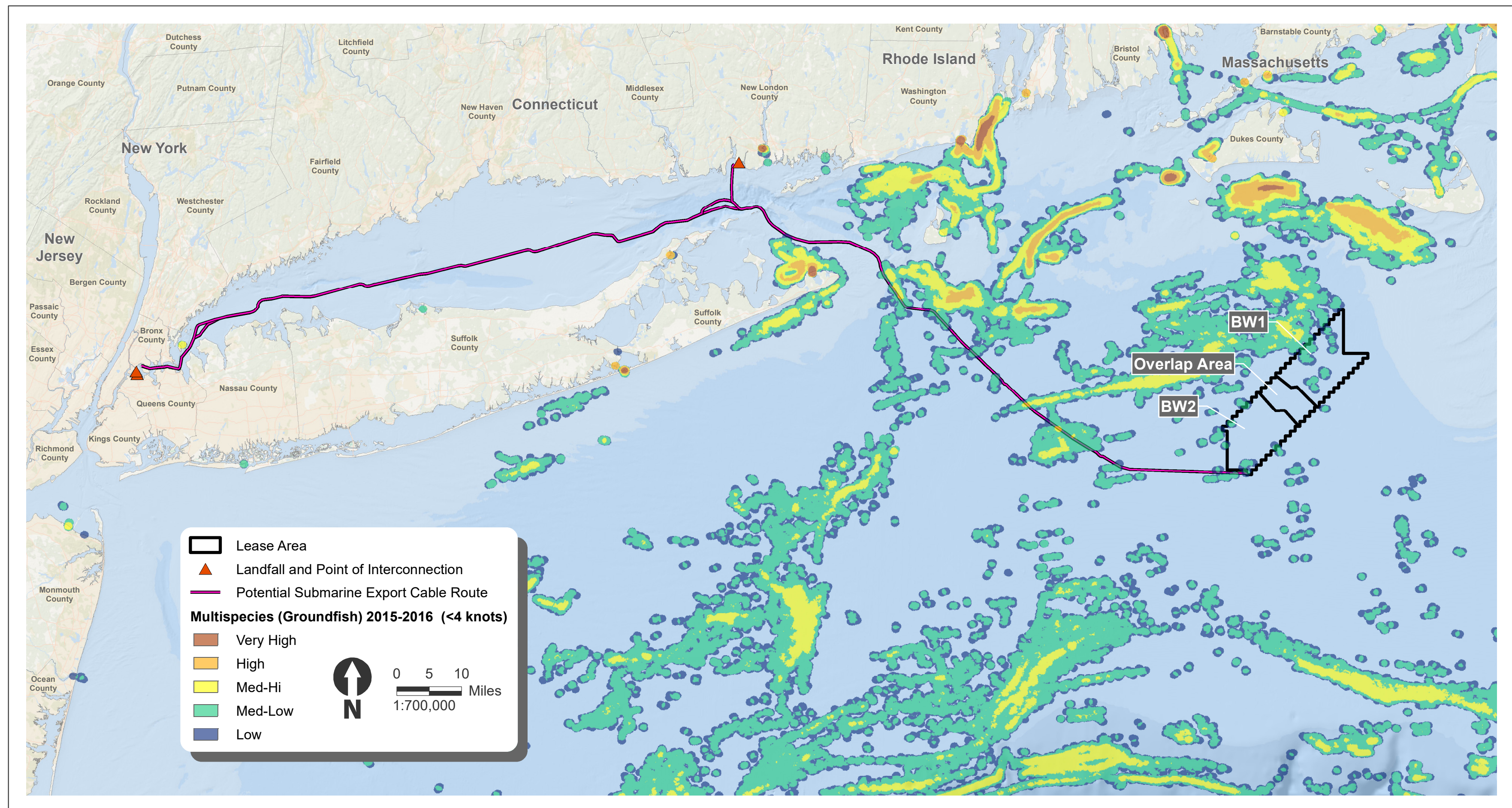


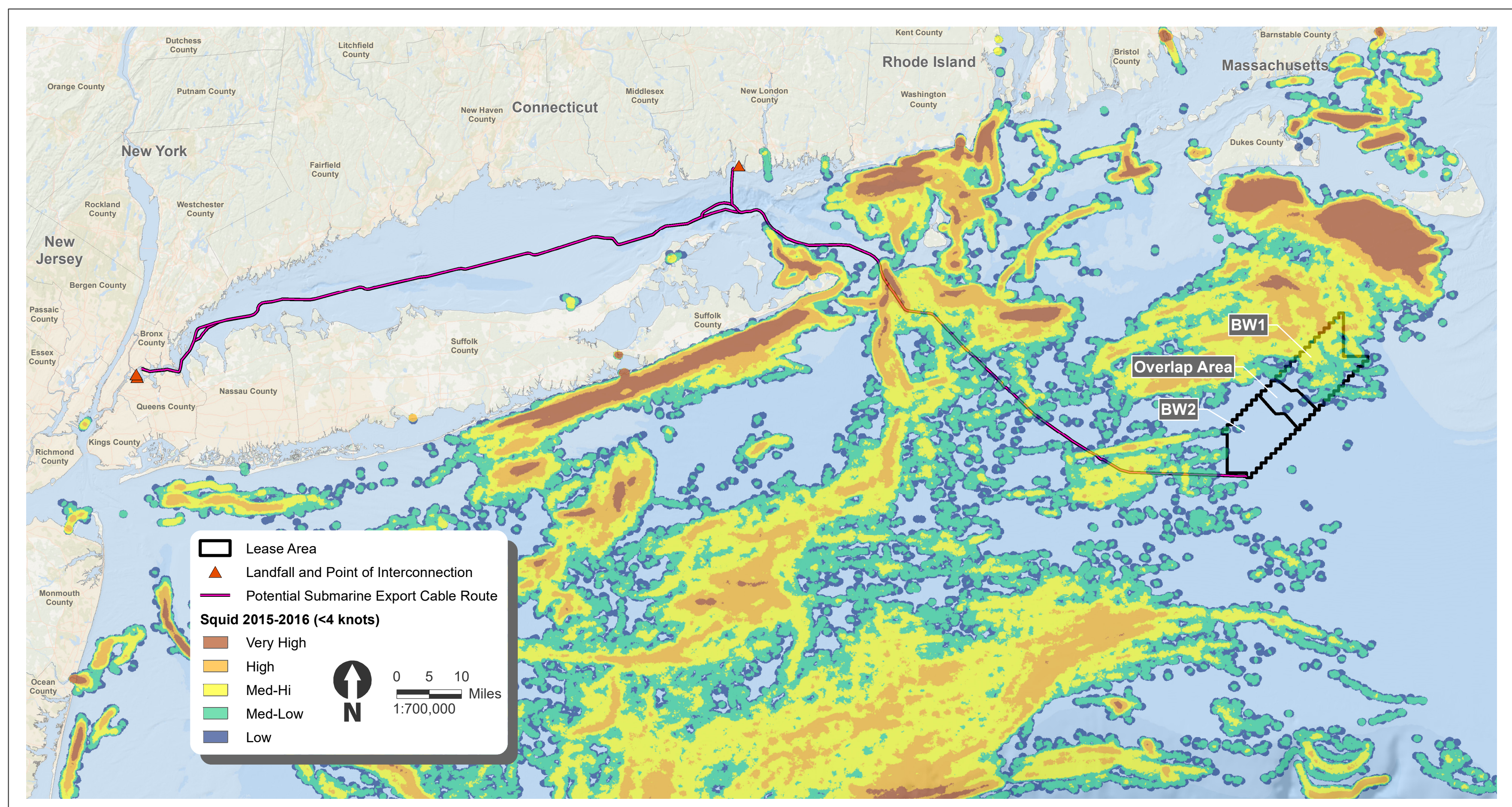


Beacon Wind Project

# Commercial Fishing Density



Multi-Species Groundfish Otter Trawling at <4 Knots (7.4 Km/Hr), 2015-2016 Vessel Monitoring System (VMS) Data



Squid Trawling at <4 Knots (7.4 Km/Hr), 2015-2016 VMS Data



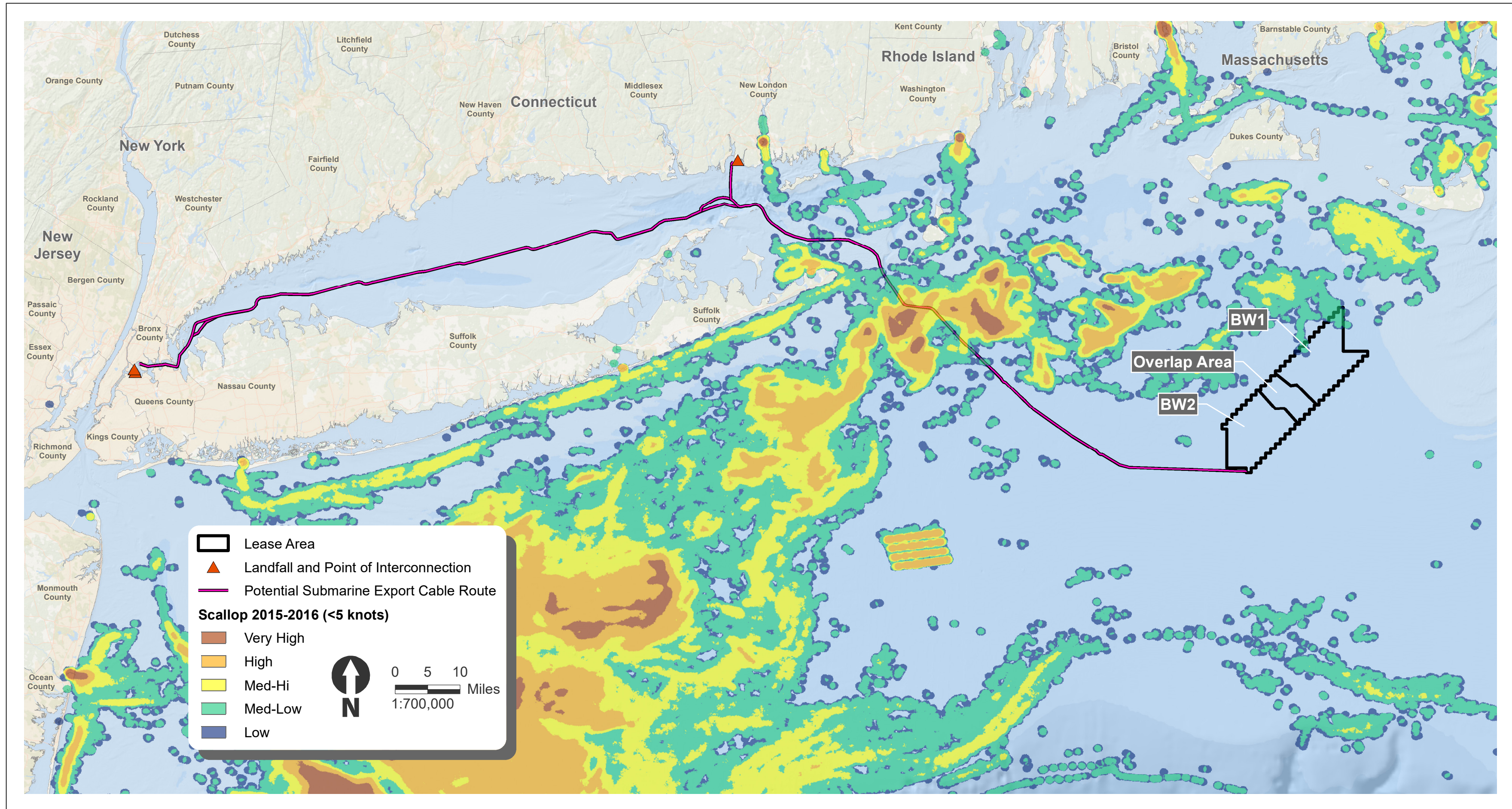
For more information, please visit:

<https://www.boem.gov/renewable-energy/state-activities/fishing-and-offshore-renewable-energy>

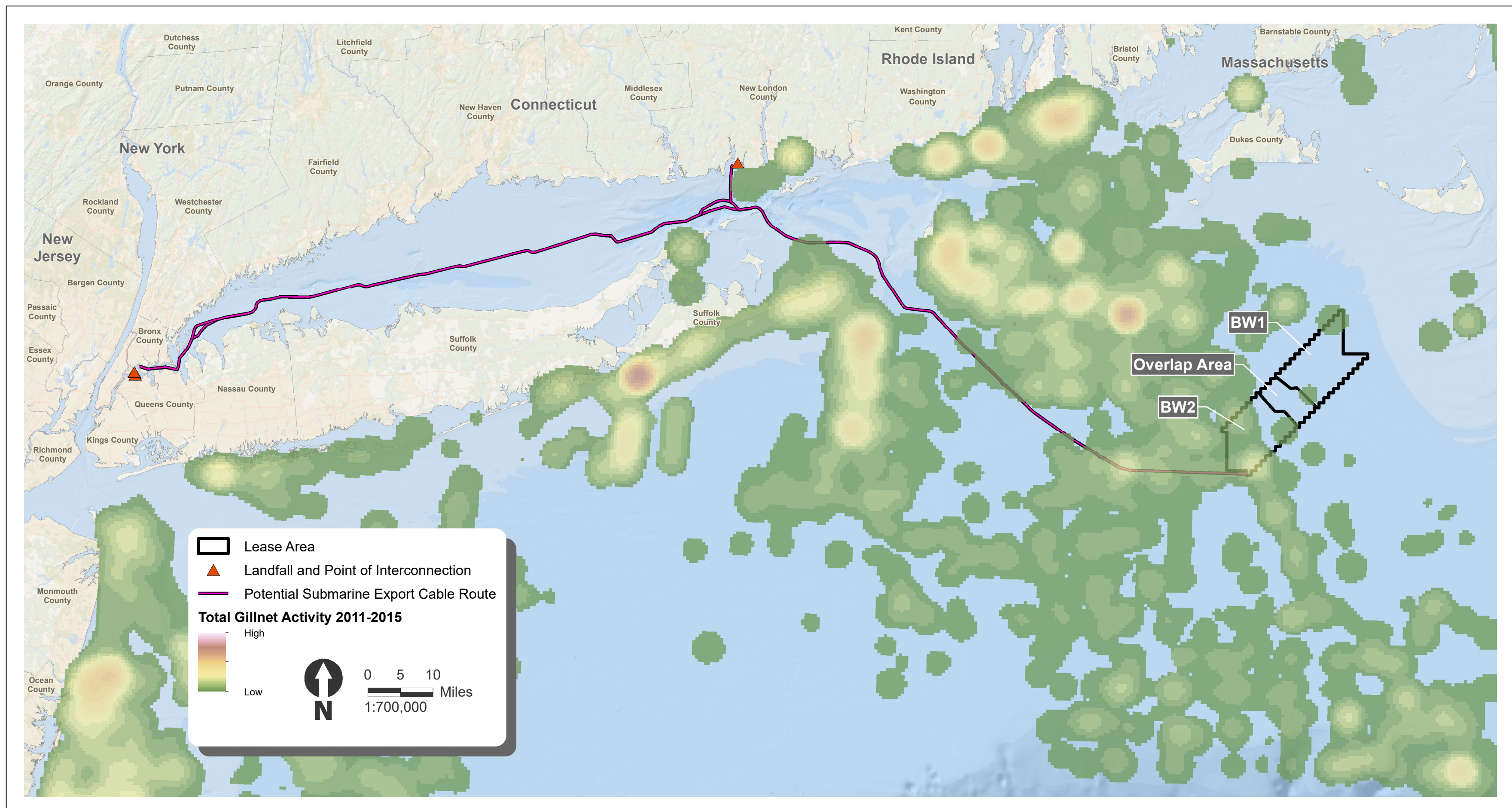


Beacon Wind Project

# Commercial Fishing Density



Scallop Fishing Activity at < 5 Knots (9.3 Km/Hr), 2015-2016 VMS Data



Surfclam/Quahog Fishing Activity at < 4 Knots (7.4 Km/Hr), 2015-2016 VMS Data

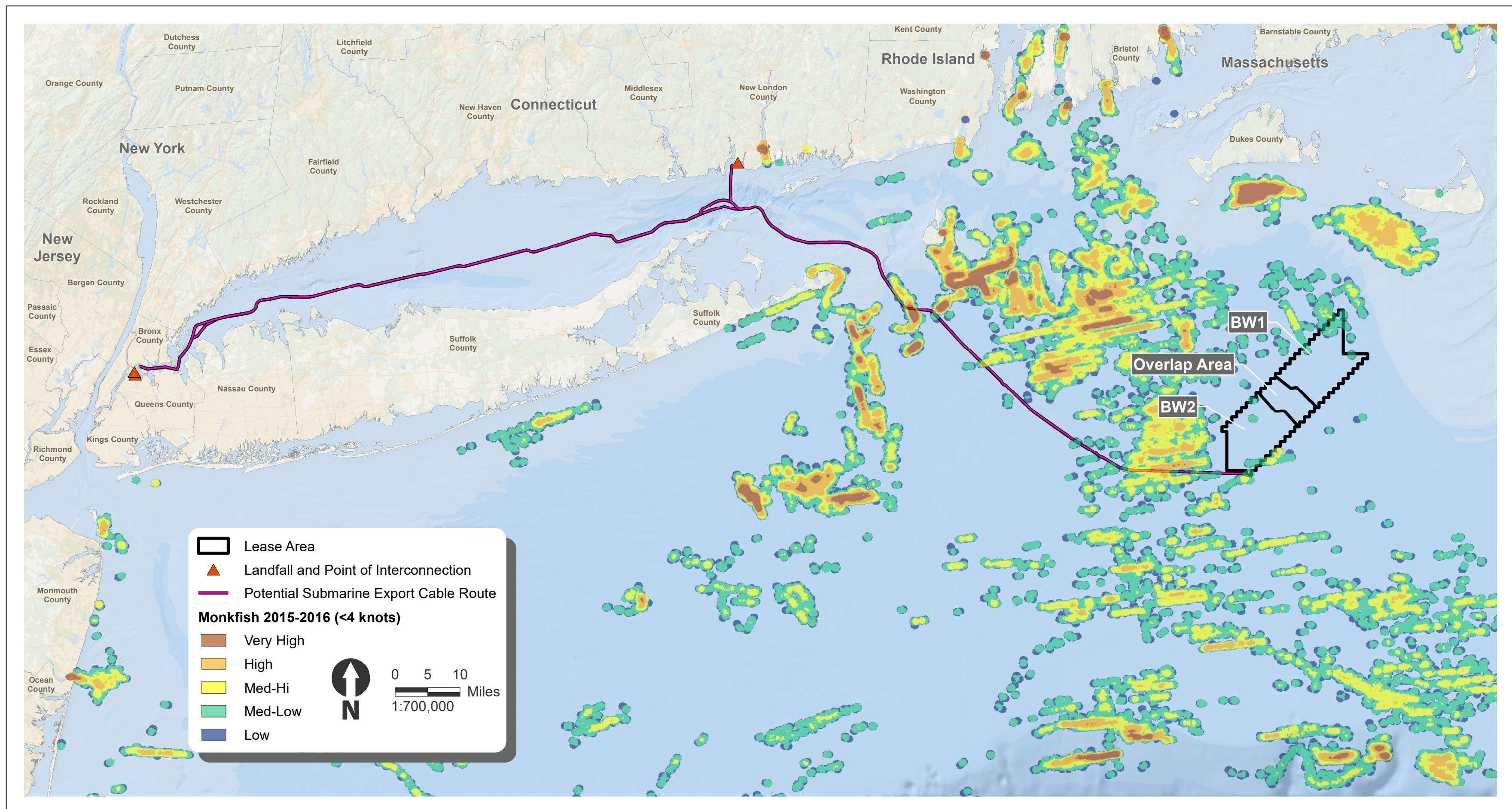


For more information, please visit:

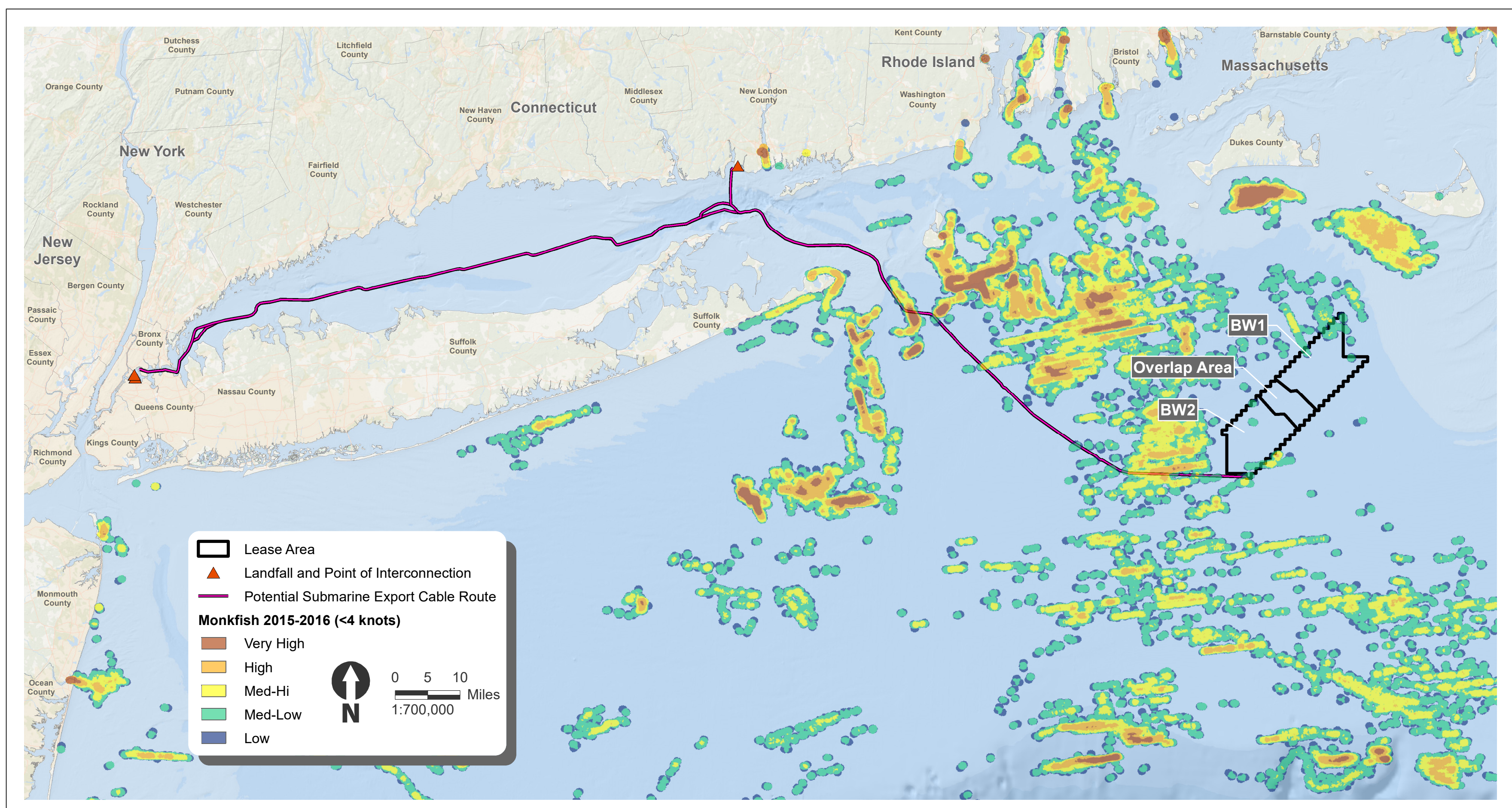
<https://www.boem.gov/renewable-energy/state-activities/fishing-and-offshore-renewable-energy>



# Commercial Fishing Density



Gilnet Activity at <4 Knots (7.4 Km/Hr), 2011-2015 Vessel Trip Report (VTR) Data



Monkfish Activity at <4 Knots (7.4 Km/Hr), 2011-2015 VMS Data

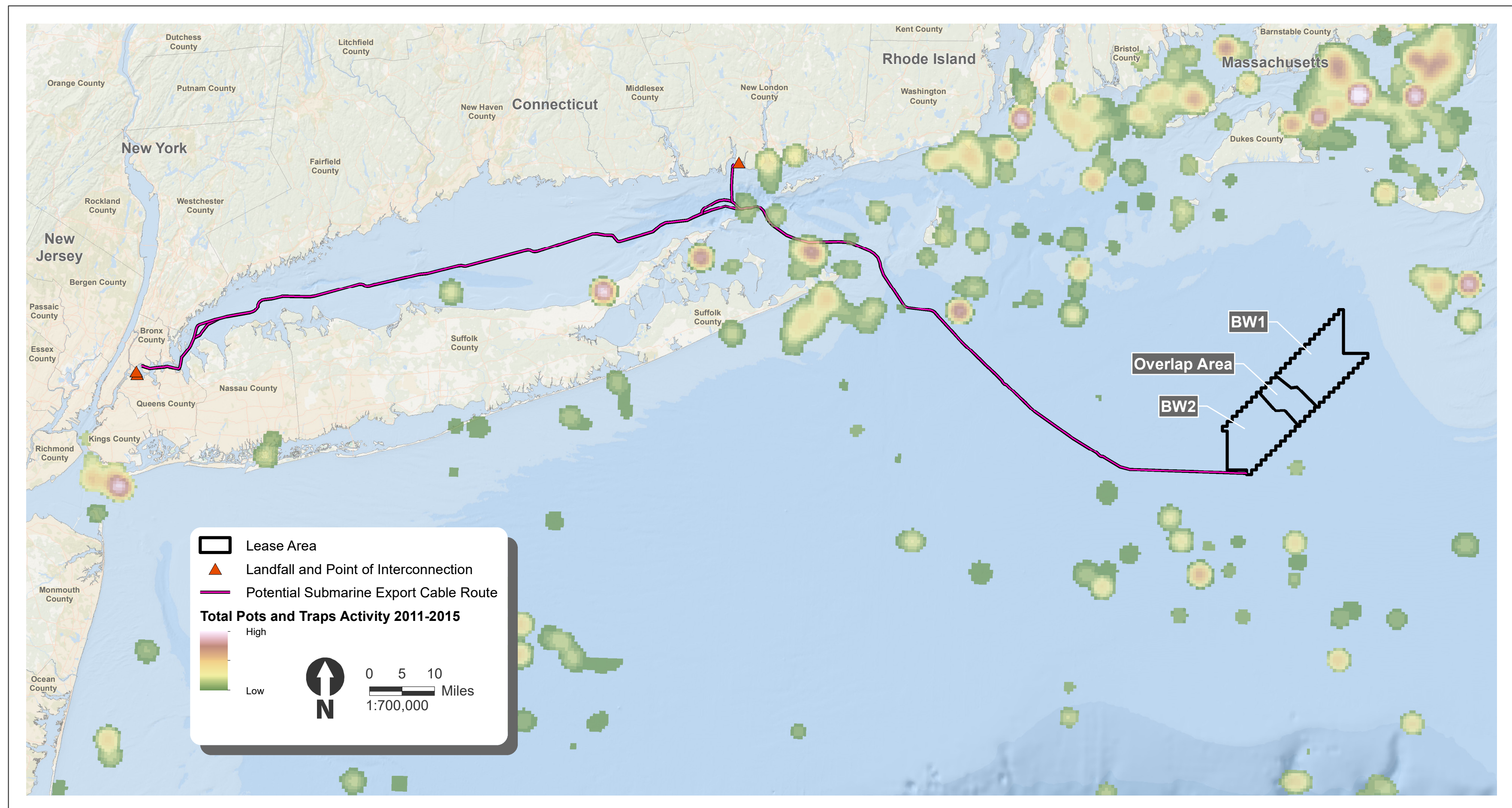


For more information, please visit:

<https://www.boem.gov/renewable-energy/state-activities/fishing-and-offshore-renewable-energy>



# Commercial Fishing Density



## Total Pot and Trap Activity 2011-2015

Original data provided by the National Marine Fisheries Service (NMFS) Vessel Monitoring Systems (VMS) and NMFS Northeast Fisheries Science Center and retrieved from the Northeast Ocean Data Portal at <https://www.northeastoceandata.org/>.



For more information, please visit:

<https://www.boem.gov/renewable-energy/state-activities/fishing-and-offshore-renewable-energy>