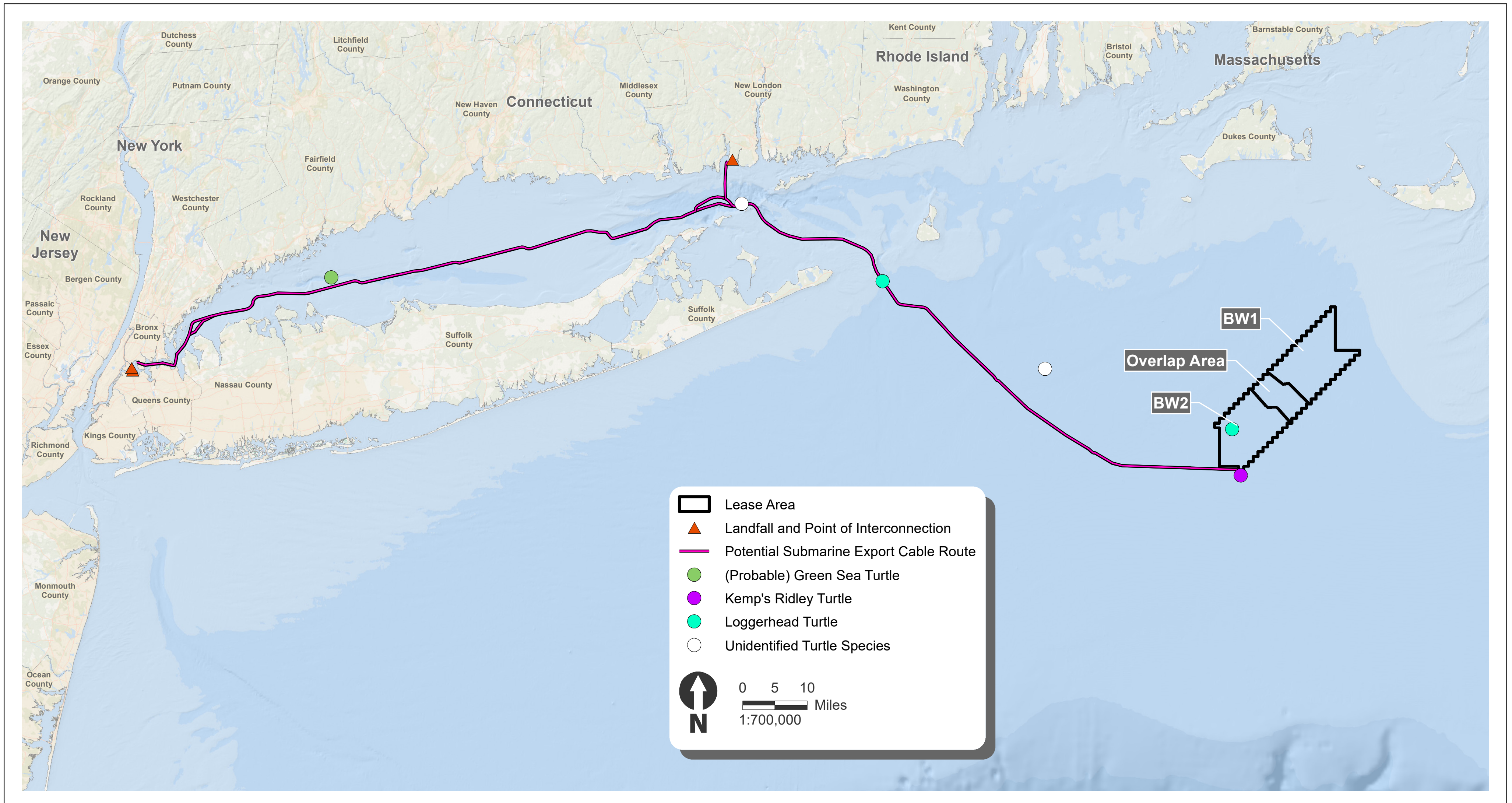




Beacon Wind Project

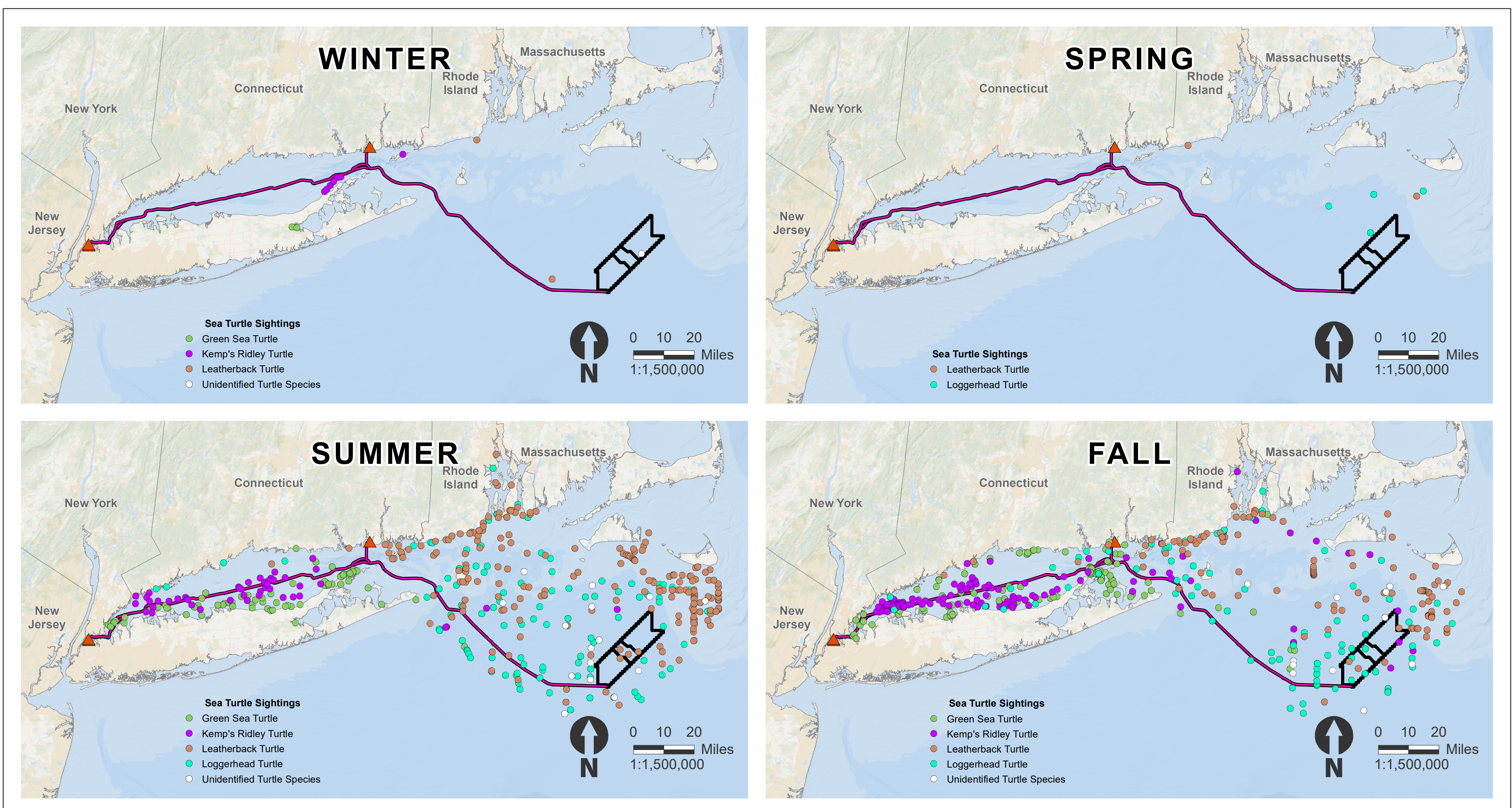
# Sea Turtle Sightings

Recent PSO (07/08/2020 TO 02/08/2021) and Aerial Survey (12/2019 TO 11/2020) Sightings

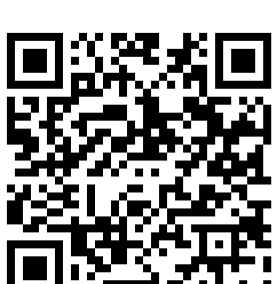


Normandeau-APEM. 2020. Digital Aerial Wildlife Surveys of BOEM Lease Area OCS-A 520: December 2019 to November 2020. Scientific Annual Report P00004197-01. Equinor Wind US, 03/05/2021, v1.1 Draft: 318 pp.” and “Marine Ventures International, Inc. 2021. Protected Species Observer Technical Report Beacon Wind BOEM Lease OCS-A 0520 (M/V Stril Explorer, M/V Deep Helder, R/V Dolphin 07 August 2020 – 02 August 2021). 225 pp.

## Available Sea Turtle Sightings Data from 1966 Through 2019 Shown Seasonally



Geospatial sighting information compiled from multiple sources including the Atlantic Marine Assessment Program for Protected Species, Ocean Biodiversity Information System (OBIS)-SEAMAP, U.S. Navy Marine Mammal Program, Massachusetts Clean Energy Center, Anderson Cabot Center for Ocean Life at the New England Aquarium APEM, and Nortmandeau Associates.



For more information, please visit:  
<https://www.boem.gov/renewable-energy>