



# Central Atlantic Renewable Energy Planning Area Development

---

*Presentation for Maritime Industry Representatives*

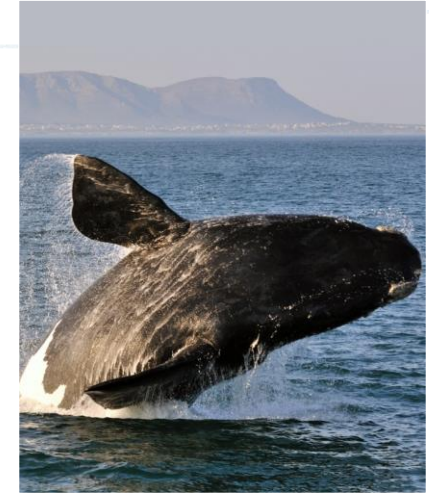
Bridgette Duplantis, Project Coordinator

December 8, 2021



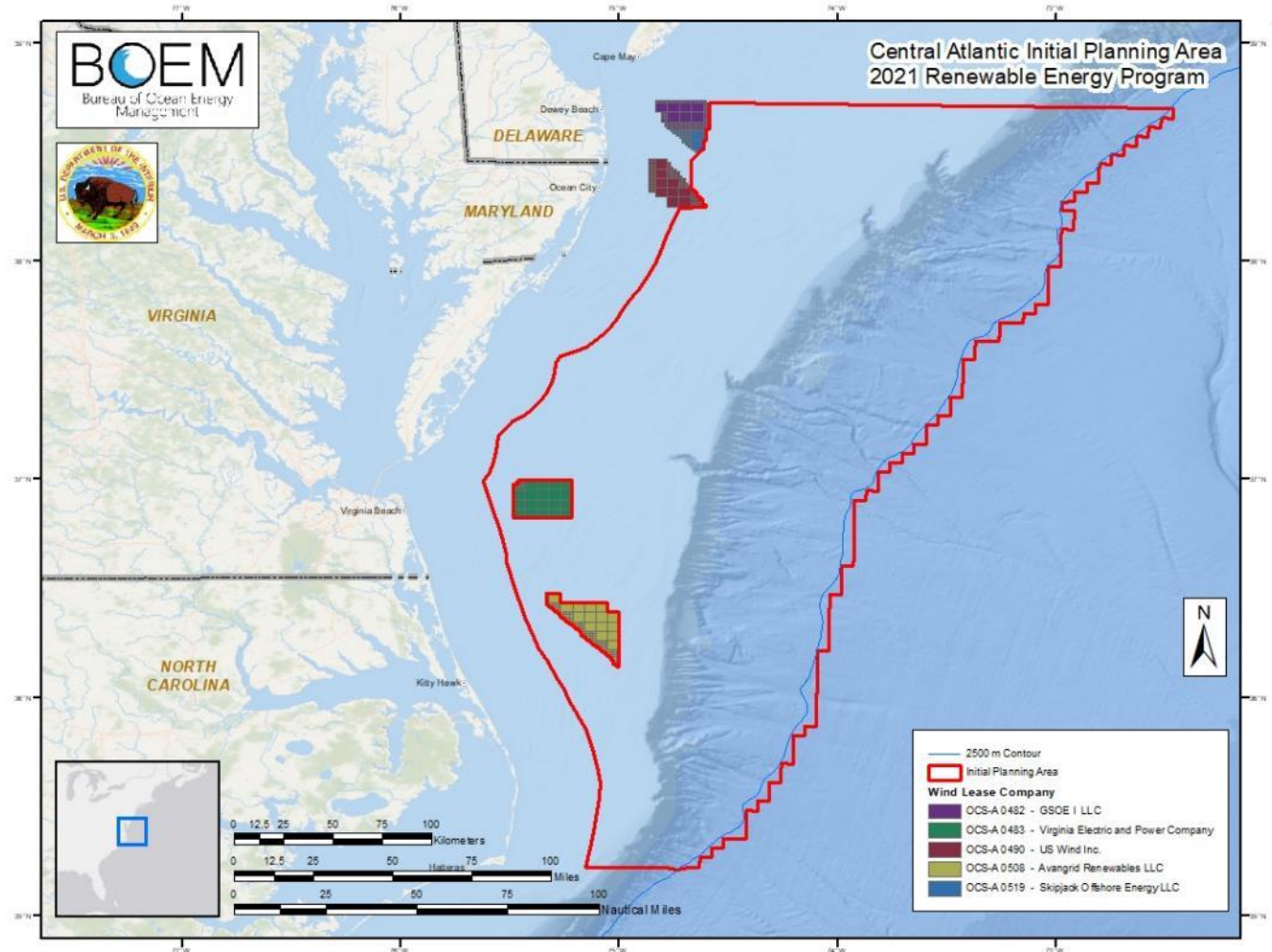
# Objectives

- **Review of BOEM leasing process**
- **Recent engagement activities in the Central Atlantic**
- **Planning Area Development**
- **Next Steps**

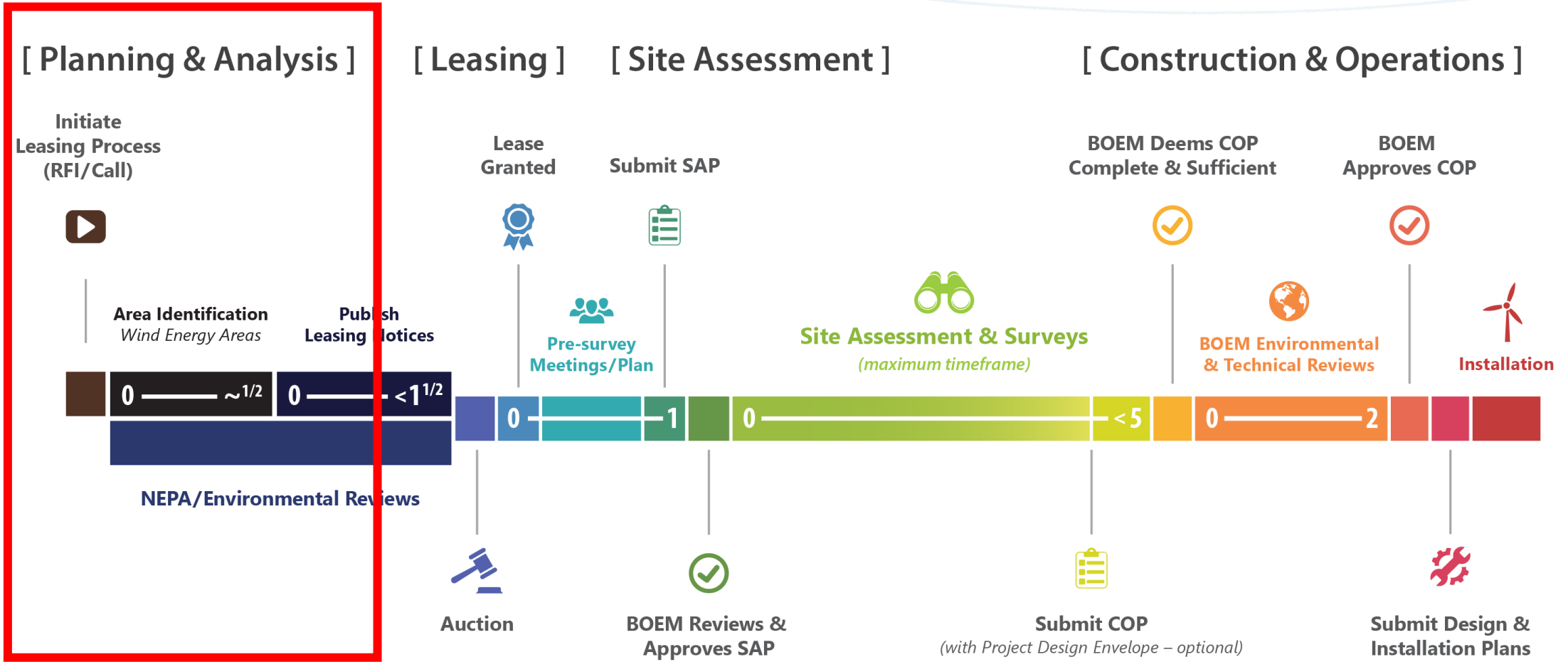


# Central Atlantic

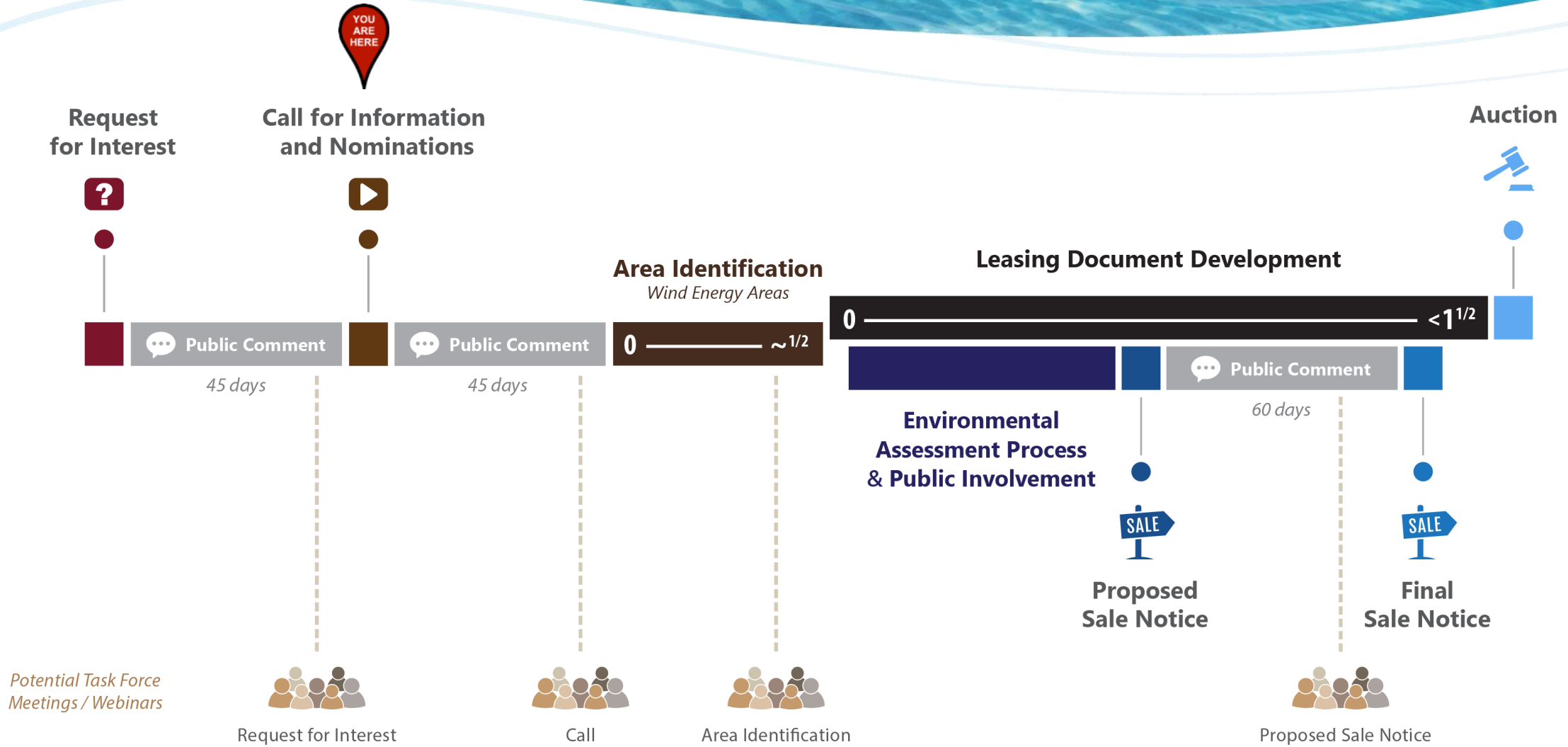
- Central Atlantic
  - Encompasses area offshore Delaware south to Cape Hatteras, North Carolina



# Renewable Energy Leasing Process: From RFI/Call to Operation

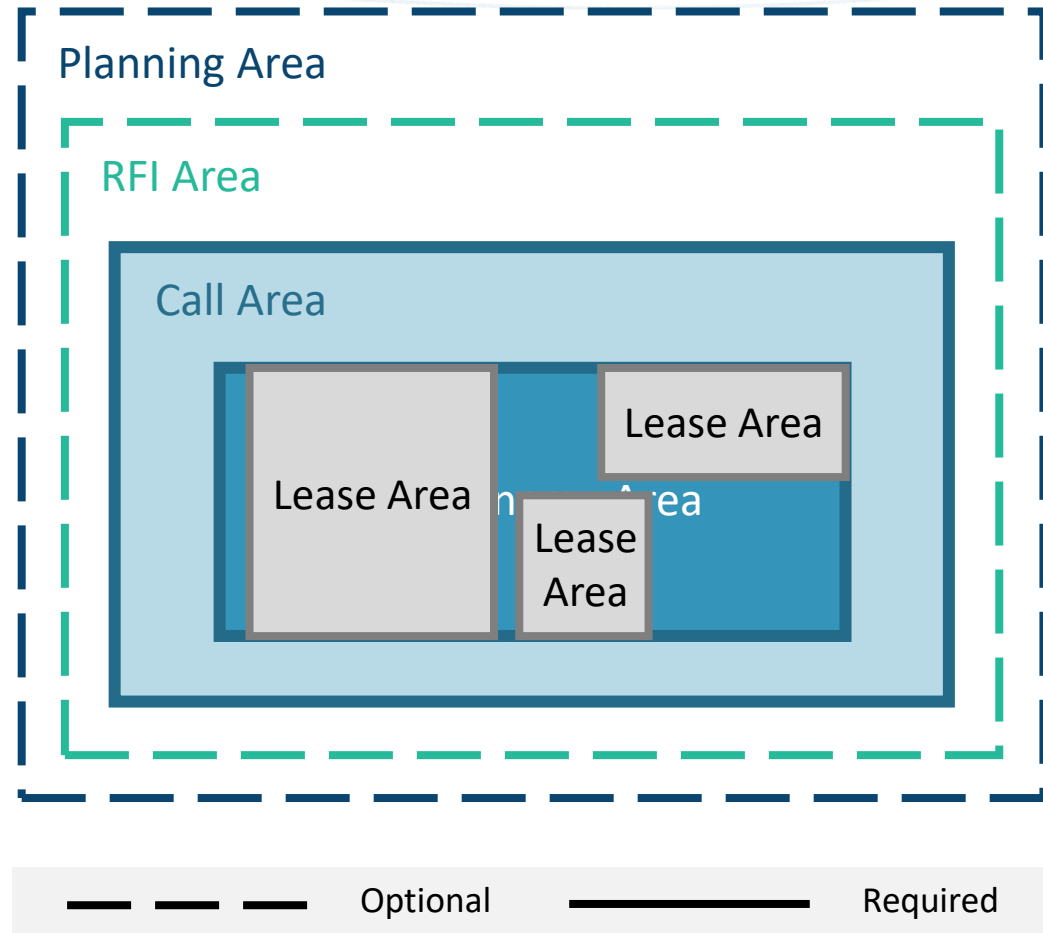


# Renewable Energy Leasing Process: From RFI/Call to Lease Sale



# Area Identification Process: WInnowing

- Currently developing the Planning Area
- Wind Energy Areas (WEAs) have the potential for further division into Lease Areas
- Multiple sales can come from Wind Energy Areas



# Recent Planning Activities

- **Held virtual meetings with each affected State (VA, MD, NC and DE)**
  - Discussed state wind energy goals, progress, concerns and data availability
- **Collected data from States, MARCO, Marine Cadastre, MMIS**
- **Created an AGOL interactive map to examine space-use conflicts**
- **Coordinating with Federal Partners (USCG, NOAA, NASA, USFWS and DoD)**
- **Soliciting feedback at informational meetings**
  - Maritime Industry (December 8, 2021)
  - Tribal Governments (December 9, 2021)
  - Environmental Non-Governmental Organizations (December 15, 2021)
  - Fishery Management Councils and Organizations/Recreational Fishing (January 5-6, 2022)

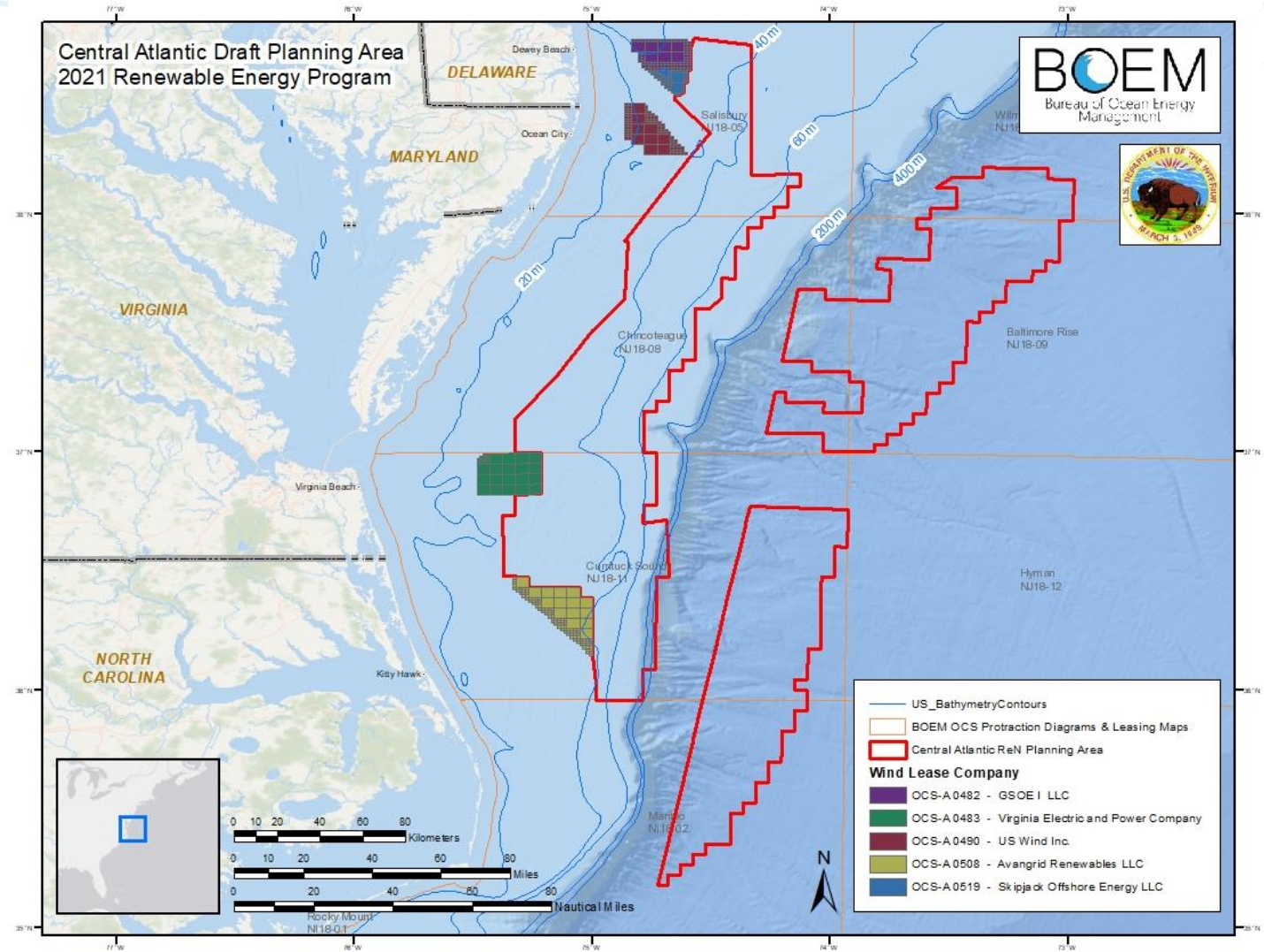
# Future Planning Activities

- **Central Atlantic Intergovernmental Renewable Energy Task Force Meeting**
  - Compiling feedback from Federal partners, States, Tribal governments and informational meetings to create a draft Call for Information and Nominations
  - Opportunity to discuss draft Call Area before publication
  - Meeting: **February 16, 2022**



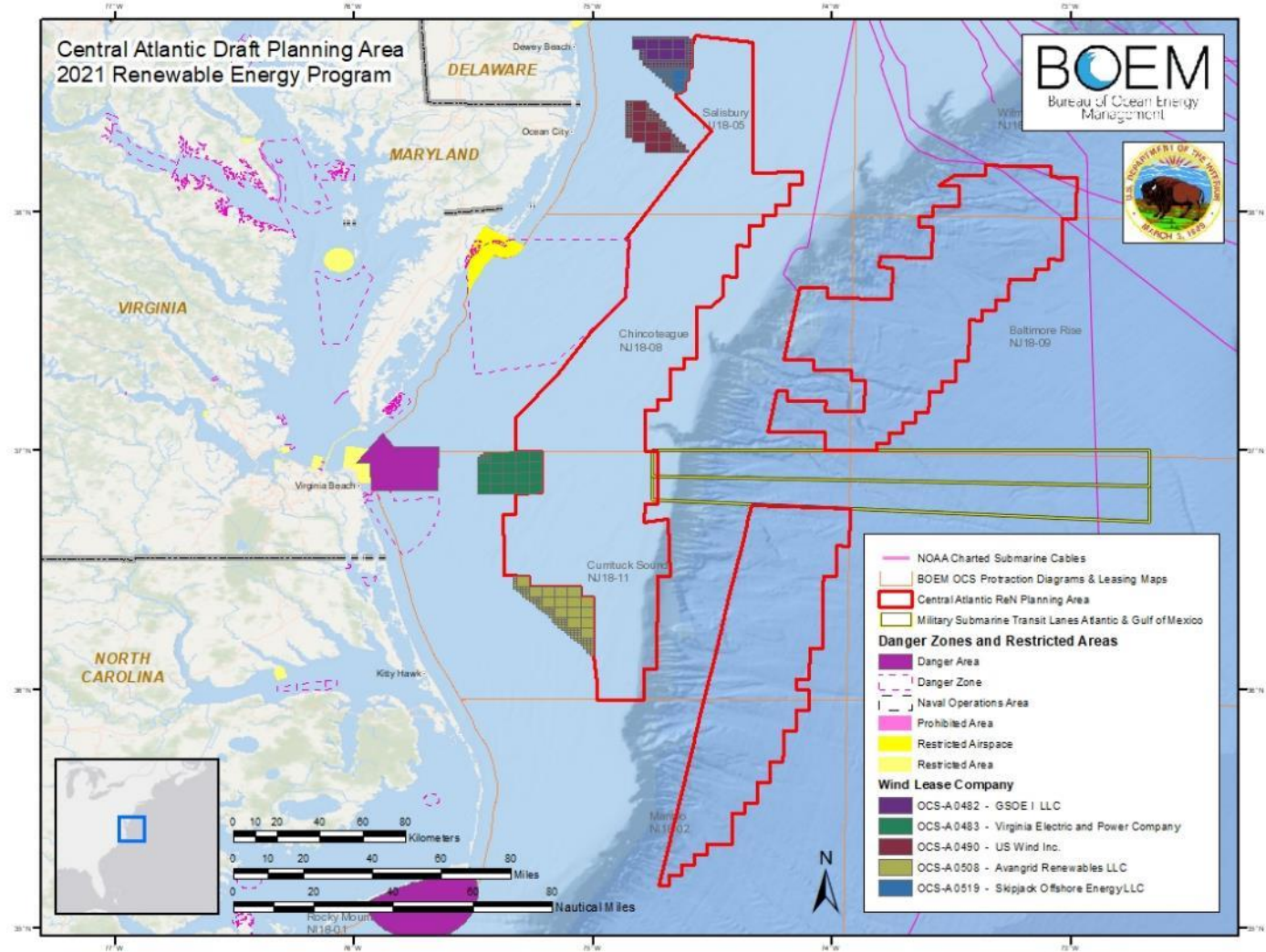
# Planning Area Development

- Active wind energy leases
- Bathymetry
  - 60 meters
  - 2500 meters



# Planning Area Development

- NASA Danger Zone
- Military Submarine Transit Lanes

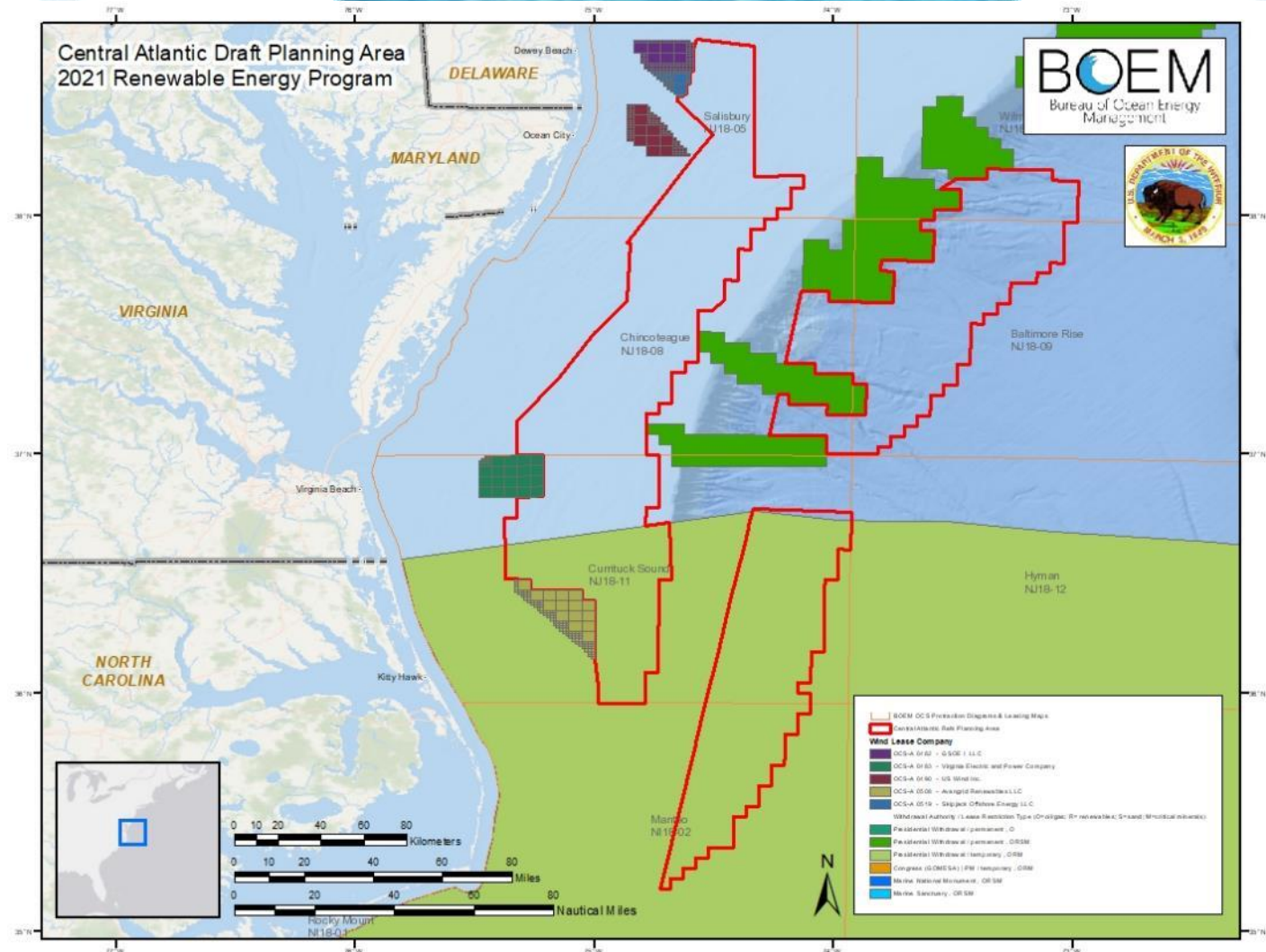


Office of Leasing and Plans - Mapping and Automation Section | MMS202205055 | 1 December 2021



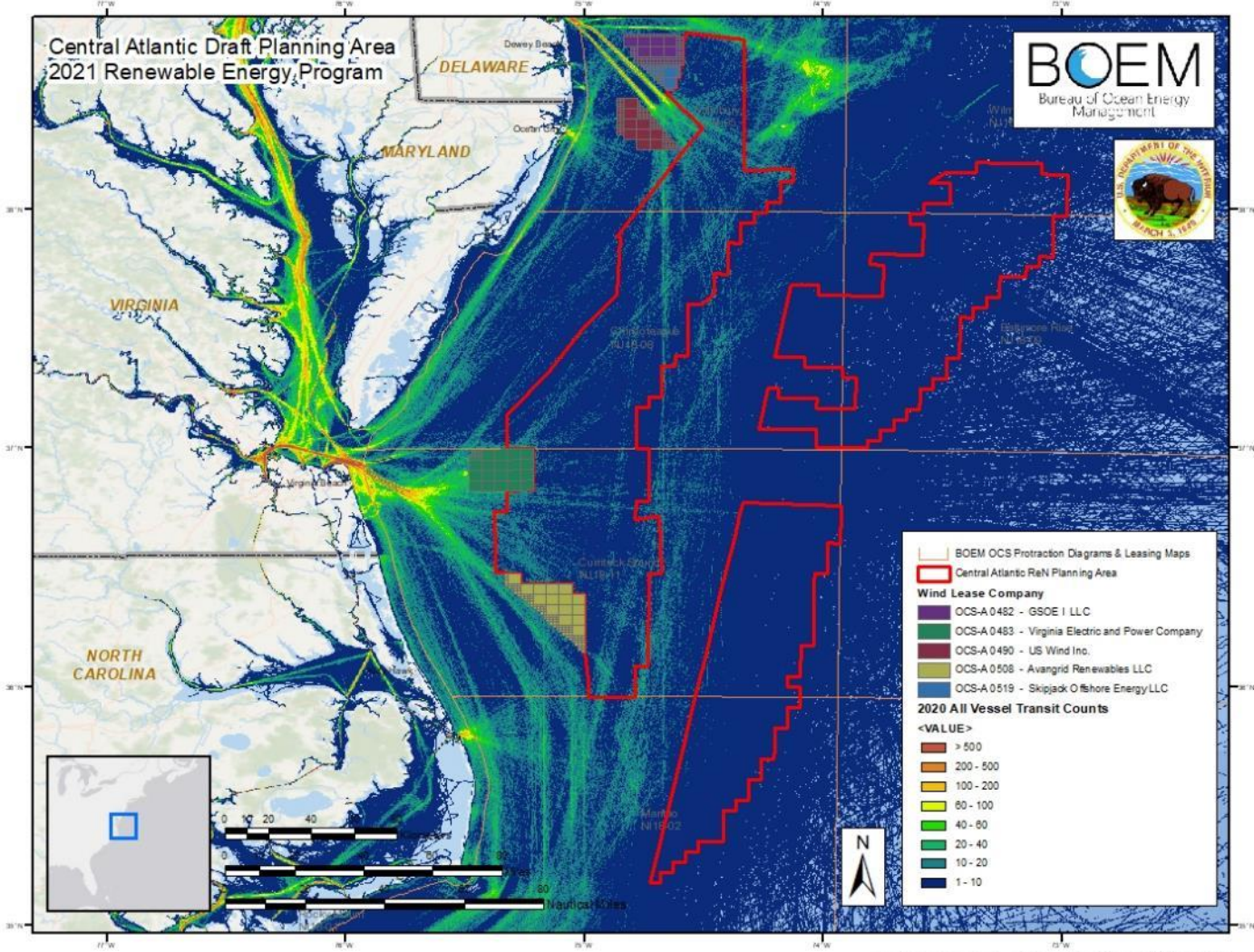
# Planning Area Development

- Areas withdrawn from leasing
  - North Carolina
  - Atlantic Canyon



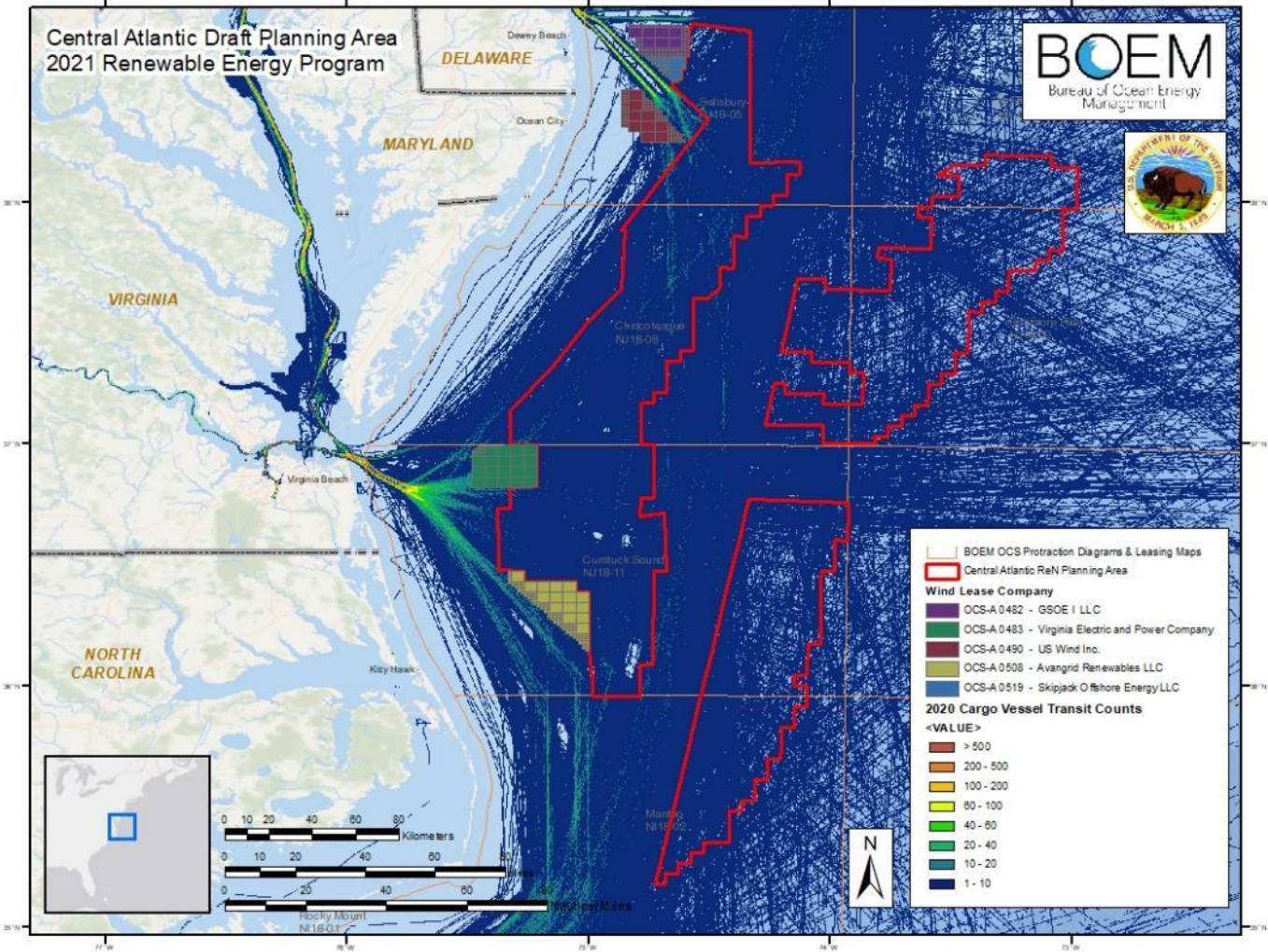
# Planning Area Development

- Vessel Transit Counts- All (2020)



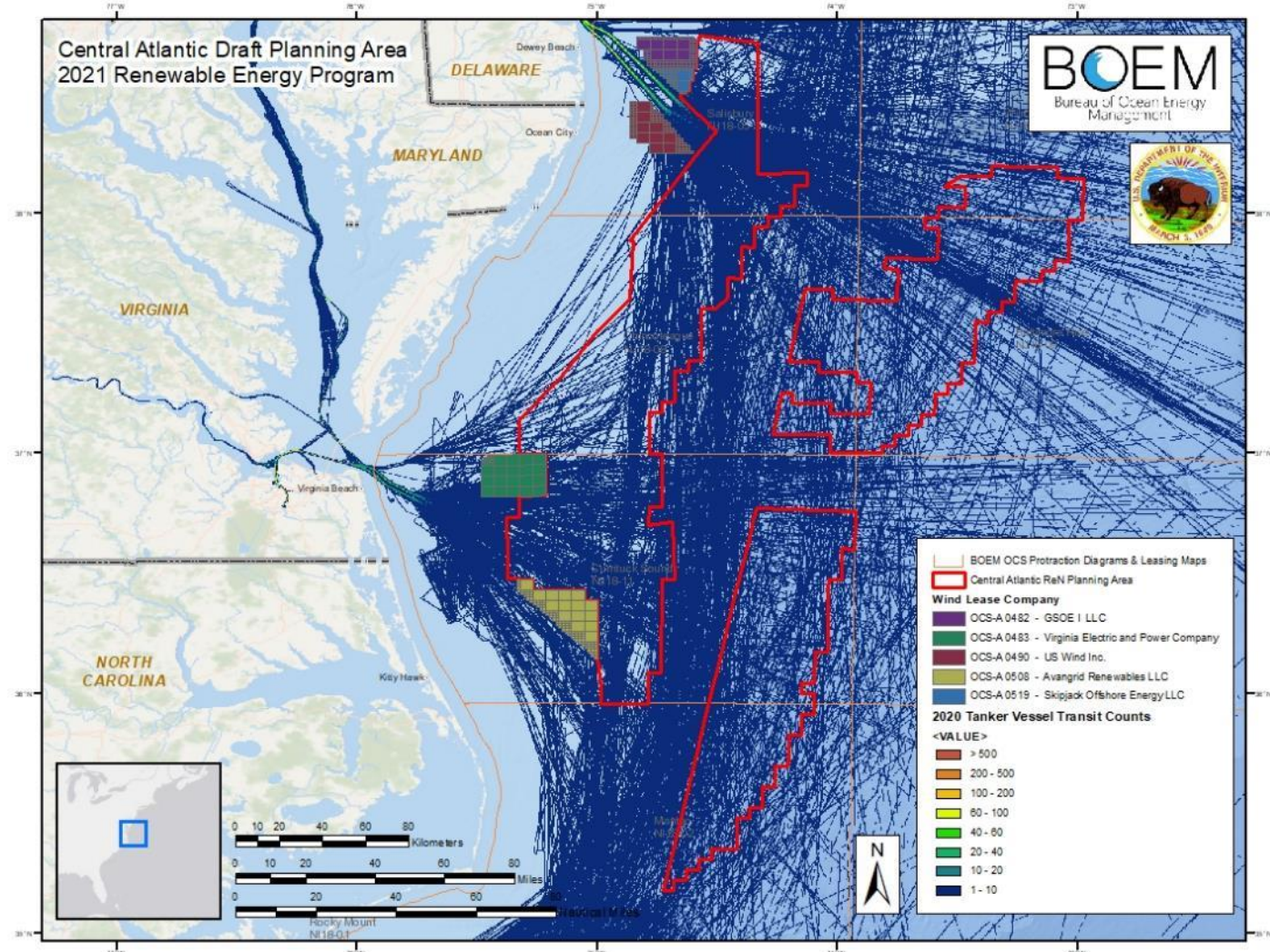
# Planning Area Development

- Vessel Transit Count- Cargo (2020)



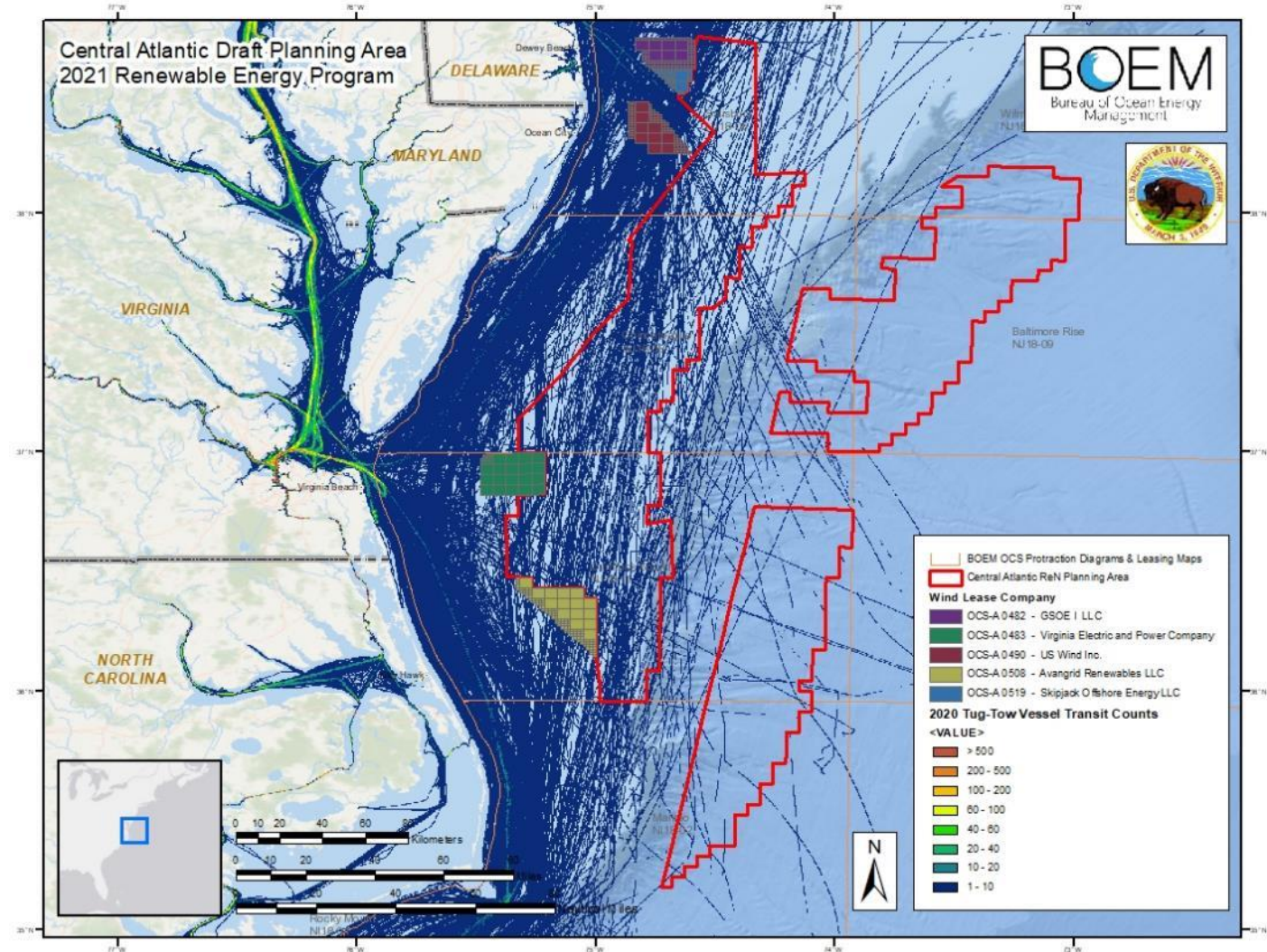
# Planning Area Development

- Vessel Transit Count-Tanker (2020)



# Planning Area Development

- Vessel Transit Count-Tug and Tow (2020)



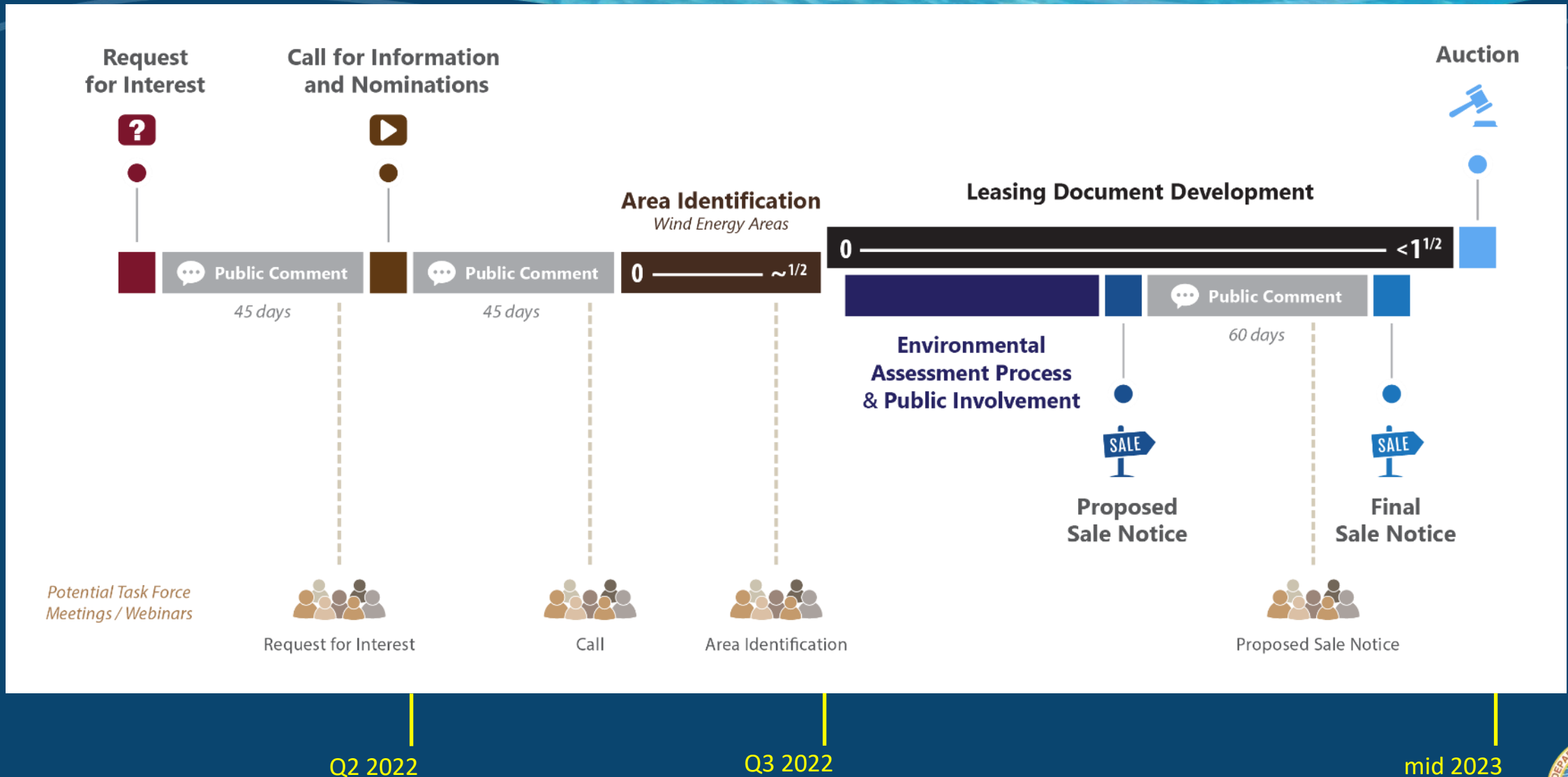
# Central Atlantic Milestones

Milestone	Action	Target Date
Draft Call Area to Task Force	Initiate Federal/State Partner Reviews	September 2021
	Distribute to Task Force	January 2022
Tribal Engagement	Informational Meeting	December 9, 2021
Fisheries Engagement	Sector based meetings (4)	January 5-6, 2022
Task Force Meeting	Hold virtual meeting	February 16, 2022
Publish Call for Information and Nominations	Publish Call	Q2 2022
	45-Day Comment Period	Q2 2022
Area Identification	Identify Wind Energy Area(s)	Q3 2022
Lease Sale	Proposed Sale Notice	Q4 2022
	Final Sale Notice	Early/Mid 2023
	Hold auction	Mid-2023





# Central Atlantic Milestones





# CENTRAL ATLANTIC OFFSHORE WIND ENERGY PLANNING MARITIME INDUSTRY ENGAGEMENT

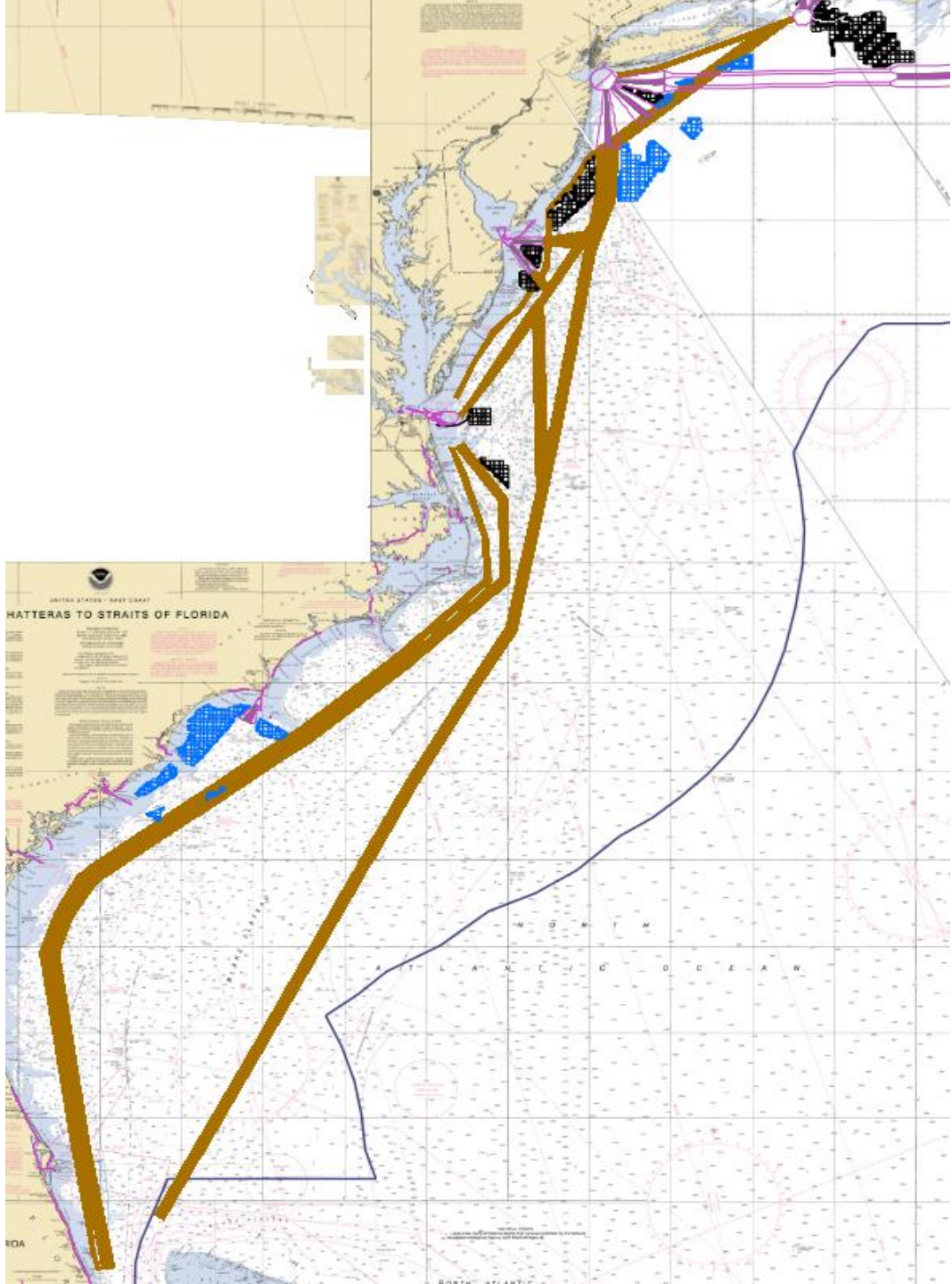
DECEMBER 8, 2021

George Detweiler  
US Coast Guard

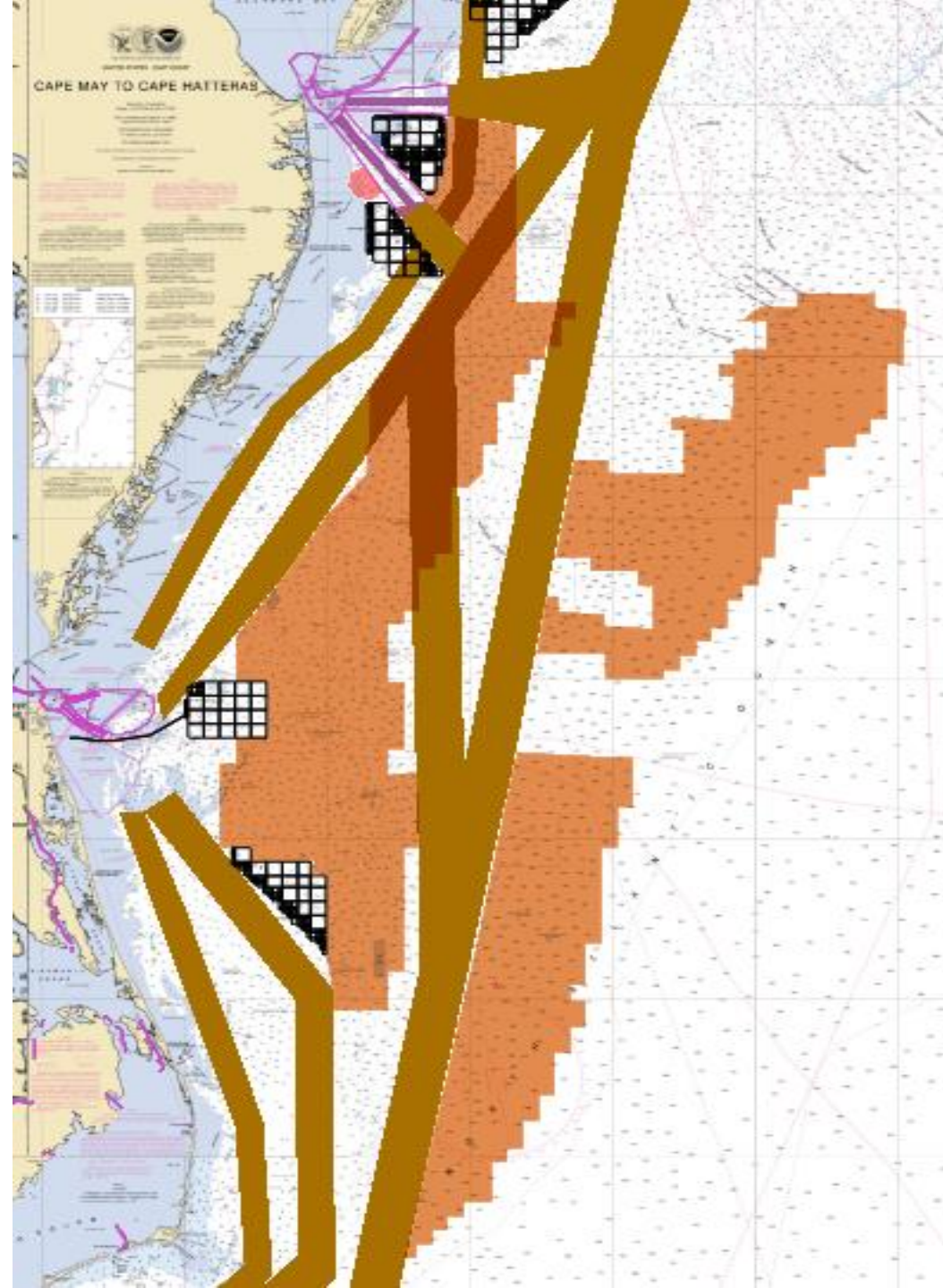
# OVERVIEW

1. ACPARS BACKGROUND
2. ACPARS FAIRWAYS WITH CENTRAL ATLANTIC DRAFT PLANNING AREA
3. COMBINATION OF ACPARS FAIRWAYS AND SUPPLEMENTAL PARS RECOMMENDATIONS
4. COMBINATION OF ACPARS FAIRWAYS AND SUPPLEMENTAL PARS RECOMMENDATIONS WITH AIS DATA
5. COMBINATION OF ACPARS FAIRWAYS AND SUPPLEMENTAL PARS RECOMMENDATIONS WITH AIS DATA OUT TO 200NM
6. COMBINATION OF ACPARS FAIRWAYS AND SUPPLEMENTAL PARS RECOMMENDATIONS WITH AIS DATA OUT TO 200NM (AMENDED)

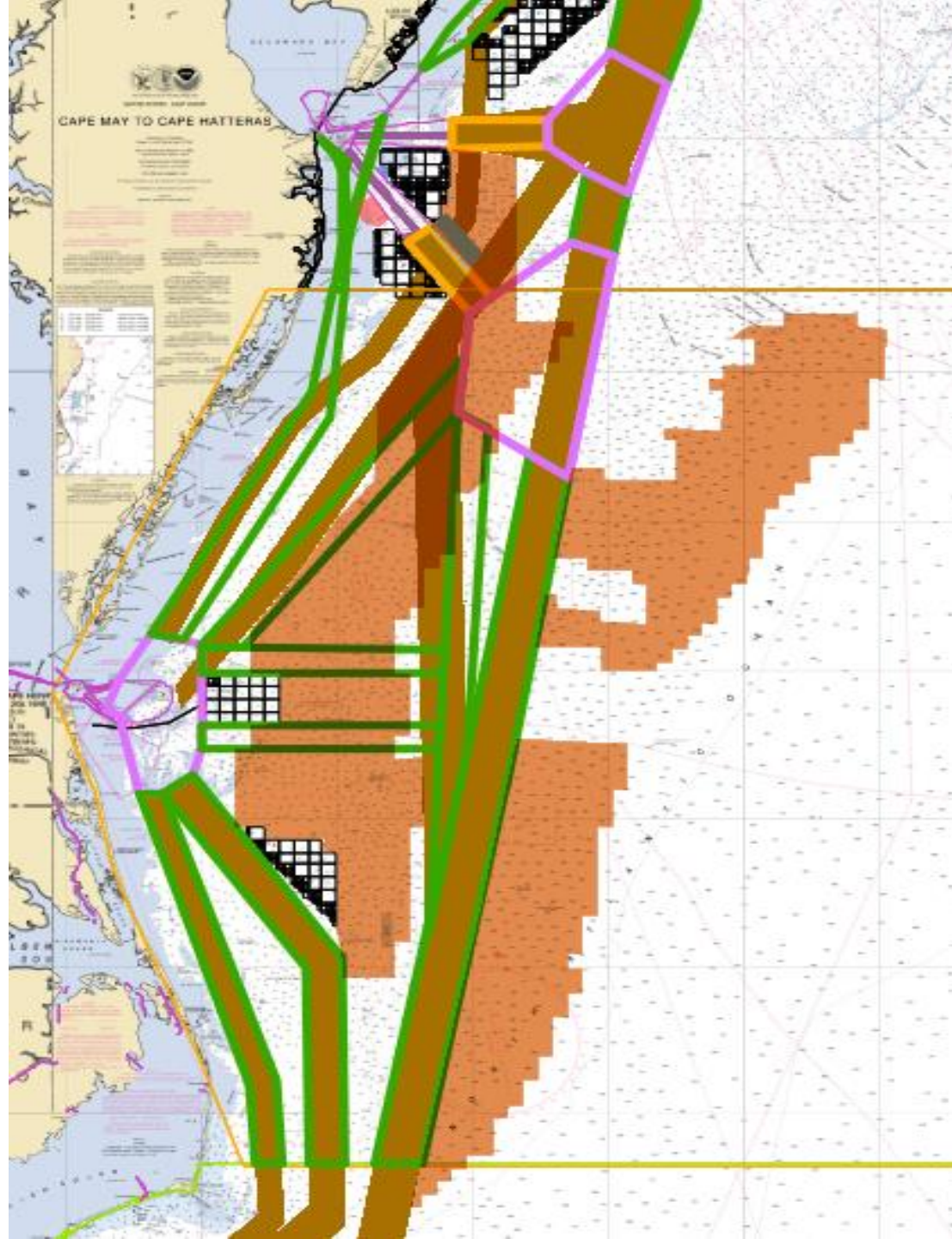
**ANPRM PROPOSAL  
JUNE 19, 2020**



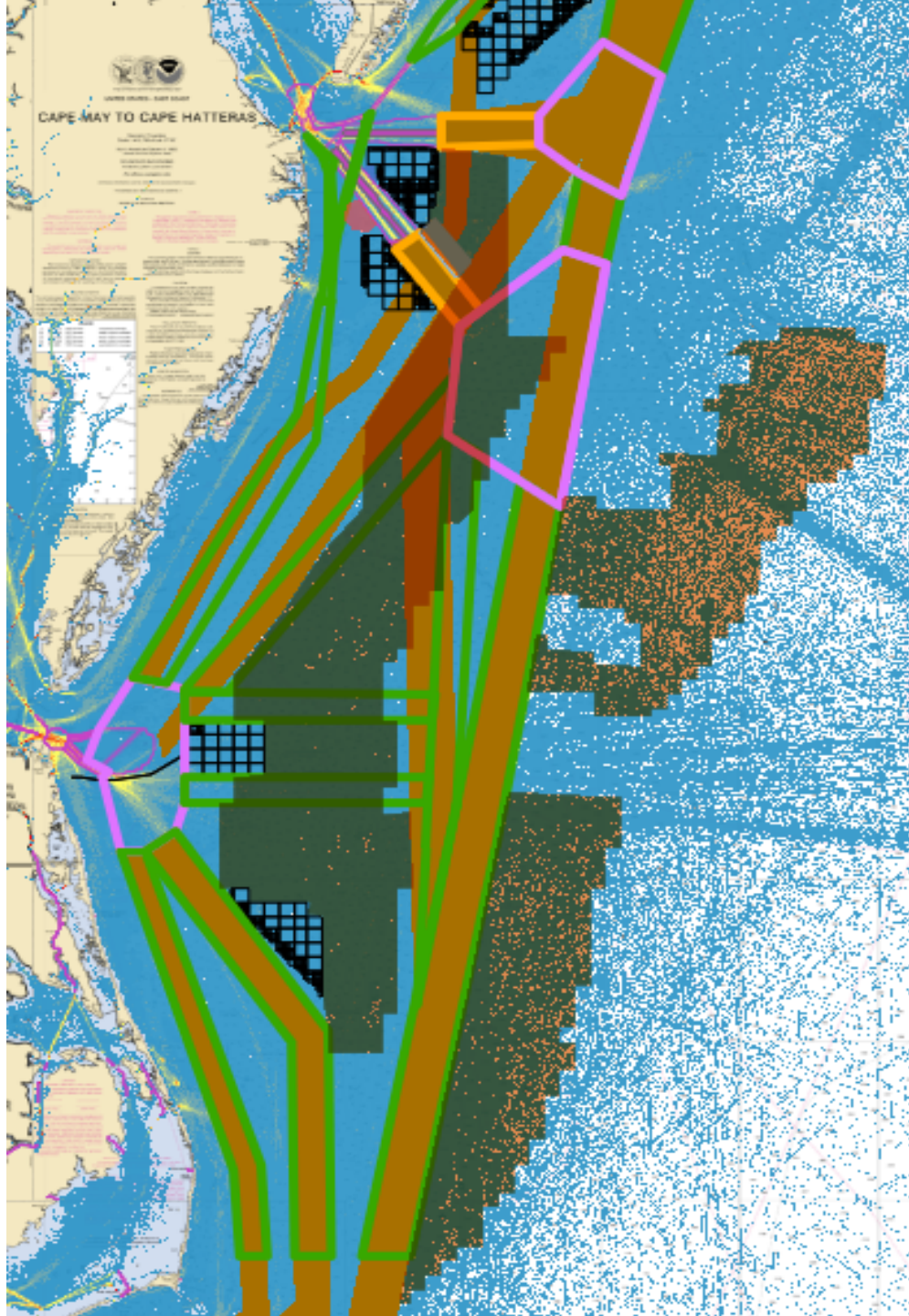
# ACPARS FAIRWAYS WITH CENTRAL ATLANTIC DRAFT PLANNING AREA



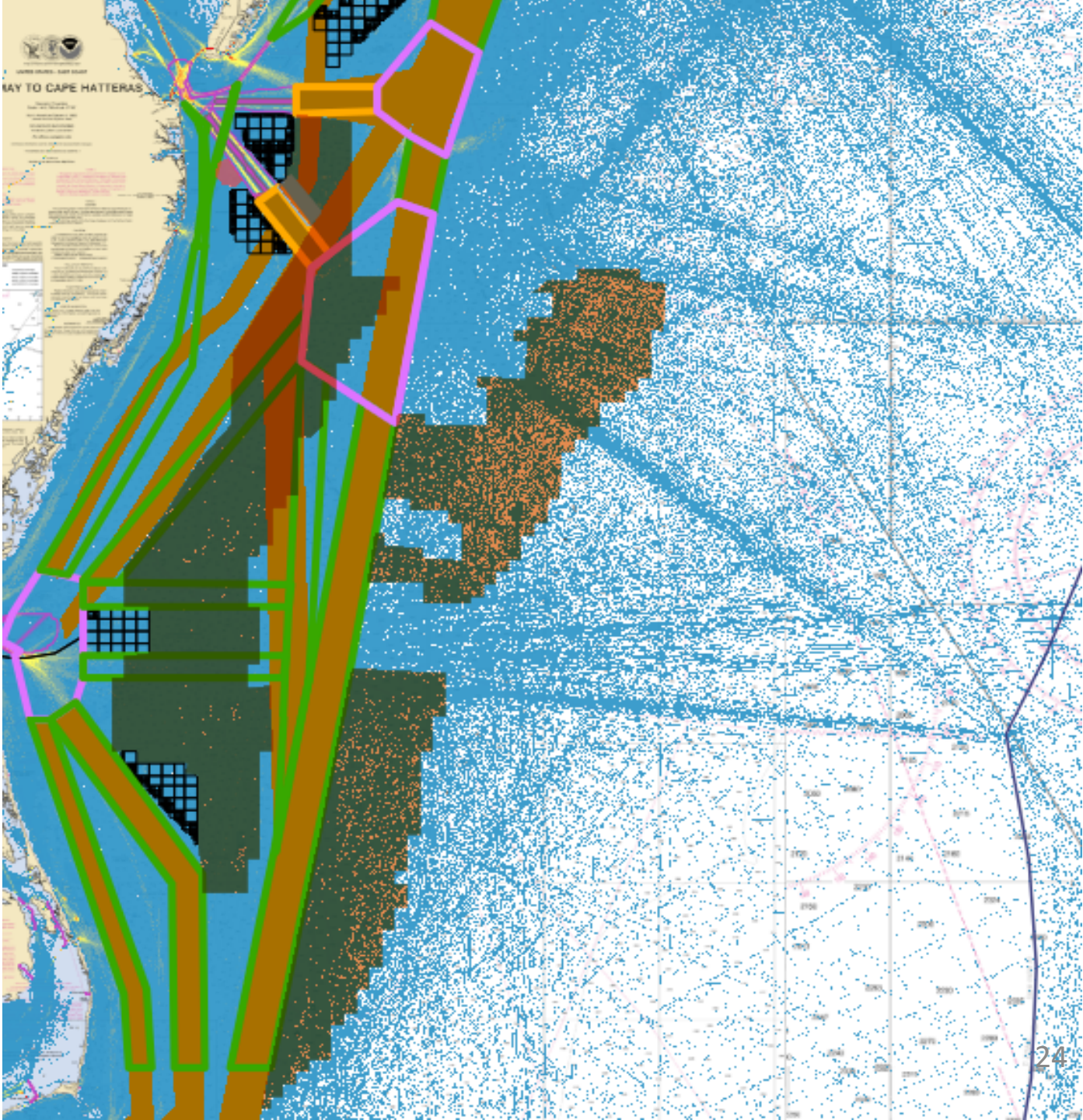
# COMBINATION OF ACPARS FAIRWAYS AND SUPPLEMENTAL PARS RECOMMENDATIONS



**COMBINATION OF ACPARS  
FAIRWAYS AND SUPPLEMENTAL  
PARS RECOMMENDATIONS  
WITH 2019 AIS DATA**

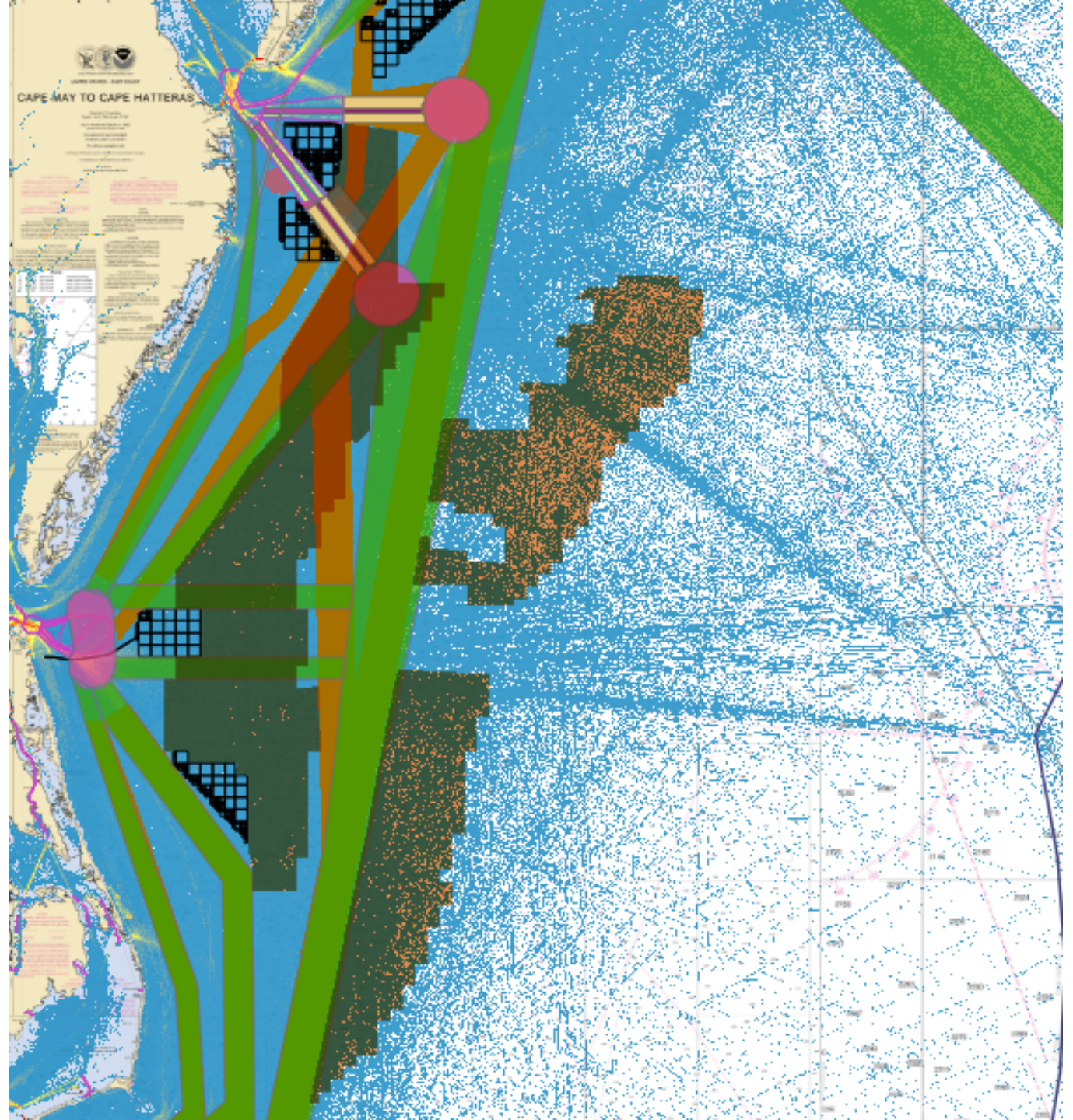


**COMBINATION OF ACPARS  
FAIRWAYS AND SUPPLEMENTAL  
PARS RECOMMENDATIONS  
WITH 2019 AIS DATA OUT TO 200NM**





**COMBINATION OF ACPARS  
FAIRWAYS AND SUPPLEMENTAL  
PARS RECOMMENDATIONS  
WITH 2019 AIS DATA OUT TO 200NM  
(AMENDED)**



# Discussion



# Discussion Questions

- What is the typical vessel size and cargo you see in the Central Atlantic?
- Do you anticipate vessels growing larger who use this area such as the “super ships” who can use the widened Panama Canal?
- What are areas that are not USCG marked but may be typical anchorage or staging grounds?
- Do you see potential areas where a lease may interfere with major shipping routes further offshore?
- Other maritime users that commercial traffic may typically come in conflict within these areas?

# Additional Feedback? Comments?

If you have additional feedback or comments not discussed in today's meeting, please send them to:

Bridgette Duplantis  
[Bridgette.Duplantis@boem.gov](mailto:Bridgette.Duplantis@boem.gov)

No later than December 31, 2021

An underwater photograph of sand dunes on the ocean floor, with sunlight filtering through the clear blue water, creating a serene and textured scene.

# BOEM

Bureau of Ocean Energy  
Management

[BOEM.gov](http://BOEM.gov)



# Planning Area Development

- Active wind energy leases
- Bathymetry
  - 60 meters
  - 2500 meters

