



## **SEMI-ANNUAL PROGRESS REPORT**

**MAY 1, 2022 – OCTOBER 31, 2022**

**LEASE AREA OCS-A 0539**

**COMMUNITY OFFSHORE WIND, LLC**

**NOVEMBER 1, 2022, REVISED JANUARY 31, 2023**



## Table of Contents

<b>1</b>	<b>Introduction</b>	<b>1</b>
<b>2</b>	<b>Summary of Overall Progress</b>	<b>1</b>
2.1	<i>Survey Activities</i>	3
2.2	<i>Site Assessment Plan Activities</i>	3
2.3	<i>Transmission Planning</i>	3
2.4	<i>Other Development Activities</i>	3
<b>3</b>	<b>Overview of Engagement Activities</b>	<b>4</b>
<b>4</b>	<b>Native American Tribes Engagement</b>	<b>4</b>
4.1	<i>Summary of Engagement Activities</i>	4
4.2	<i>Anticipated or Scheduled Engagement Activities</i>	6
4.3	<i>Coordinated Engagement</i>	6
<b>5</b>	<b>Other Stakeholder Engagement</b>	<b>6</b>
5.1	<i>Summary of Commercial and Recreational Fisheries Engagement Activities</i>	6
5.1.1	<i>Anticipated or Scheduled Engagement Activities</i>	16
5.1.2	<i>Coordinated Engagement</i>	16
5.2	<i>Summary of Agency Engagement Activities</i>	17
5.2.1	<i>Anticipated or Scheduled Engagement Activities</i>	18
5.2.2	<i>Coordinated Engagement</i>	18
5.3	<i>Summary of Other Stakeholder Engagement Meetings</i>	18
5.3.1	<i>Anticipated or Scheduled Engagement Activities</i>	21
5.3.2	<i>Coordinated Engagement</i>	21
	<b>Appendix A: Native American Tribes and Parties Applicable To Project</b>	<b>22</b>
	<b>Appendix B: Communication Plans</b>	<b>27</b>
<b>Tables</b>		
Table 1.	Summary of Native American Tribe Engagement	5
Table 2.	Summary of Commercial and Recreational Fisheries Engagement	8
Table 3.	Summary of Agency Engagement	17
Table 4.	Summary of Agency Engagement	19
<b>Figure</b>		
Figure 1.	Lease Area OCS-A 0539	2



## **1 Introduction**

Community Offshore Wind, a joint venture of RWE Renewables and National Grid, proposes to develop the Community Offshore Wind Project (the Project), under the Bureau of Ocean Energy Management (BOEM) Commercial Lease of Submerged Lands for Renewable Energy Development on the Outer Continental Shelf (Lease Area OCS-A 0539; Lease Area). Lease Area OCS-A 0539 encompasses approximately 125,964 acres and is located approximately 37 miles (mi; 59 kilometers [km]), 32 nautical miles [nm]) offshore of Little Egg Harbor, New Jersey and approximately 64 mi (104 km, 56 nm) offshore of Fire Island, New York. Water depths within the Lease Area range from 98 feet to 171 feet (30 meters to 52 meters) mean lower low water (MLLW). The location of Lease Area OCS-A 0539 is shown on Figure 1, below.

In accordance with Lease Stipulation 3.1, Community Offshore Wind must submit a Progress Report to BOEM every six months, through approval of the Construction and Operations Plan (COP). This report covers the first six-month period, from the Effective Date on the Lease on May 1, 2022, to October 31, 2022. The purpose of this Progress Report is to document overall project progress and engagement activities undertaken with Native American Tribes (“Tribes”), communities, ocean user groups, the general public, and other stakeholder groups throughout the reporting period, in addition to Community Offshore Winds plans for continued engagement.

## **2 Summary of Overall Progress**

Since the effective date on the Lease, Community Offshore Wind has begun the development of Lease Area OCS-A 0539 in a responsible manner. This includes the development of our Fisheries, Native American Tribes, and Agency Communications Plans, as required by Lease Stipulation 3.1.2 (see Appendix B for additional detail). Community Offshore Wind has also begun to develop and implement a site characterization and survey strategy, in addition to conducting initial studies which will support the continued development of the Project.

The sections below provide a brief summary of the site characterization and survey activities and Project development work, including transmission planning, conducted during this first reporting period.

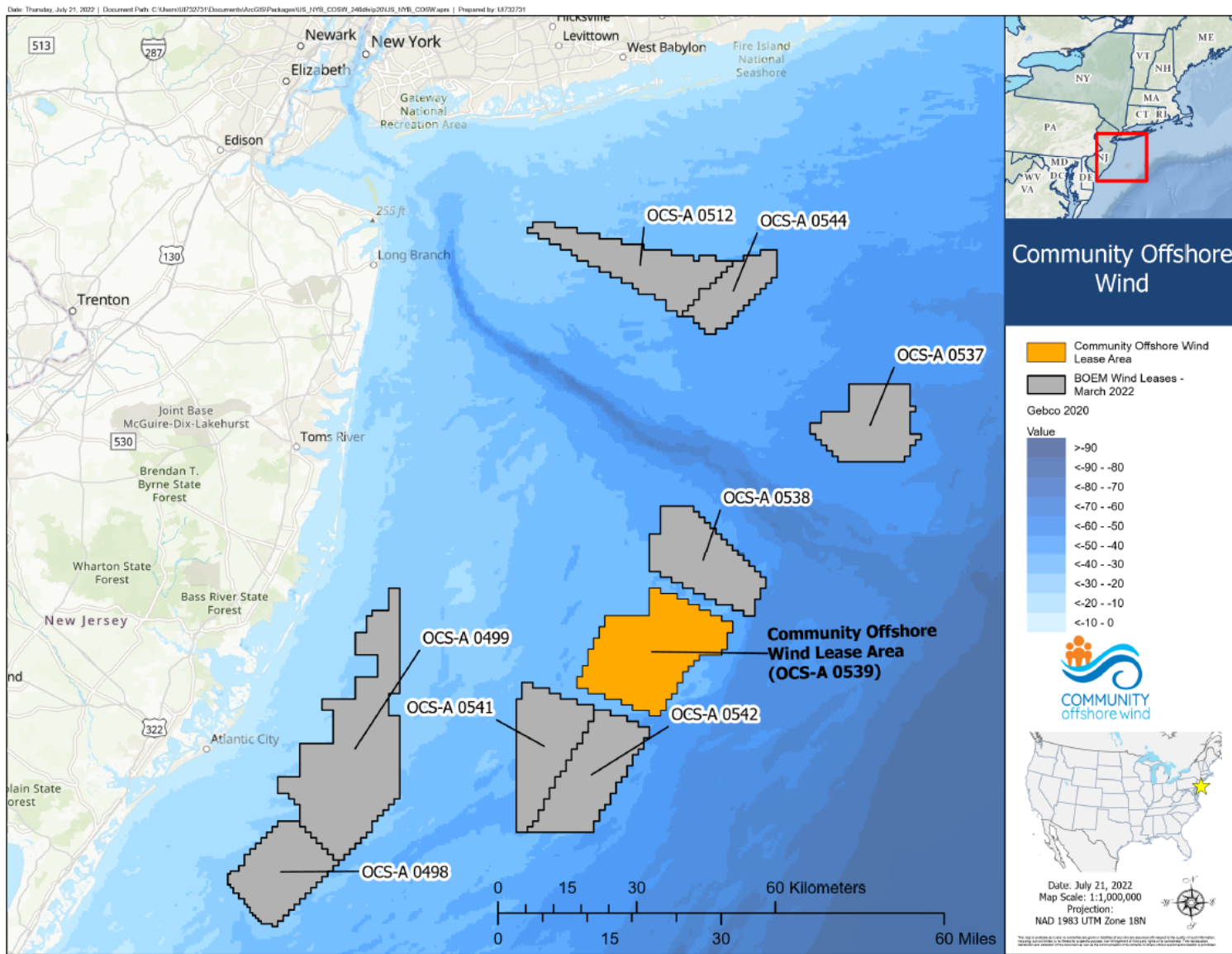


Figure 1. Lease Area OCS-A 0539

## 2.1 Survey Activities

**Current Reporting Period:** On August 9, 2022, Community Offshore Wind submitted a geophysical Survey Plan to BOEM. The 2022 High-Resolution Geophysical Survey Plan proposes to collect initial geophysical survey data within the Lease Area and along export cable routes. In accordance with Lease Stipulation 5.3.3, a Tribal Pre-Survey Meeting was held on September 9, 2022. BOEM approved the Survey Plan on October 14, 2022.

**Next Reporting Period:** Geophysical survey activities authorized under the Survey Plan are expected to commence in November or December 2022. Community Offshore Wind will provide notice 2-weeks prior to the commencement of survey activities to applicable ocean users, in accordance with Lease Stipulation 3.1.2.1, in addition to providing notice in the Local Notice to Mariners. Community Offshore Wind also anticipates submittal of a second survey plan, the 2023 High-Resolution Geophysical and Geotechnical Survey Plan to BOEM, for remaining geophysical survey activities and preliminary geotechnical survey activities in the lease area and along export cable routes.

## 2.2 Site Assessment Plan Activities

**Current Reporting Period:** N/A –Site Assessment Plan activities did not occur during this first reporting period.

**Next Reporting Period:** As defined in the Lease, the 1-year Preliminary Term ends on May 1, 2023. Community Offshore Wind will either submit a Site Assessment Plan (SAP) or request an extension to the preliminary term, as allowed under 30 CFR § 585.235.

## 2.3 Transmission Planning

**Current Reporting Period:** Community Offshore Wind completed an initial desktop assessment to support the development of transmission routing required to connect the wind farm into the electric grid. The desktop assessment incorporated stakeholder feedback received through engagement. For example, Community Offshore Wind worked with our Fisheries Representatives/Fisheries Technical Advisors to identify areas traditionally used by commercial fixed and mobile gear fishermen that could be impacted by export cable routing. This was incorporated into the initial desktop assessment and contributed to avoidance of an area known locally as “the Mudhole.”

**Next Reporting Period:** Community Offshore Wind will continue to develop and refine the transmission routing based on the results of geophysical survey data collected and continued feedback from stakeholders.

## 2.4 Other Development Activities

**Current Reporting Period:** N/A – There are no other development activities to report at this time.

**Next Reporting Period:** At this time, other development activities have not been identified. Community Offshore Wind will report on all development activities in the next Progress Report.

### **3 Overview of Engagement Activities**

Community Offshore Wind believes that coordination and engagement with all stakeholders is crucial to the success of an offshore wind project and is committed to an “early and often” approach to help ensure that the Project is developed in an environmentally, socially, and culturally sustainable manner for all. Starting prior to the effective date of Lease OCS-A 0539, Community Offshore Wind began to identify and engage with various types of stakeholders, identified as potentially interested in or affected by offshore wind and the Project. In support of the stakeholder engagement strategy, a list of stakeholders which are potentially applicable to the development, construction, and operations of an offshore wind farm in the New York Bight was developed and can be found in Appendix A. This list is intended to be a “living” document and will be updated throughout the process, as additional stakeholders are identified.

Since the effective date on the Lease, Community Offshore Wind has continued to reach out to stakeholders to introduce the Project and Project team, to provide an overview of our Fisheries, Native American Tribes, and Agency Communications Plans, as required by Lease Stipulation 3.1.2 (see Appendix B for additional detail), and to solicit feedback.

A summary of the engagement activities held with Native American Tribes is provided in Section 4, below. A summary of stakeholder engagement is provided in Section 5, with Fisheries engagement presented in Section 5.1, Agency engagement presented in Section 5.2, and other stakeholder engagement presented in Section 5.3.

## **4 Native American Tribes Engagement**

### **4.1 Summary of Engagement Activities**

Since the effective date on the Lease, Community Offshore Wind drafted the Native American Tribes Communications Plan (NATCP), as required in Lease Stipulation 3.1.2.2, and has hired a Tribal Liaison to serve as the primary point of contact with the Tribes. On June 27, 2022, Community Offshore Wind began its engagement with Native American Tribes by sending a letter and Tribal Engagement Survey to the federally recognized Tribes listed under Lease Stipulation 5.3.3, and state recognized Tribes in New Jersey and New York inviting them to participate in the development and implementation of the NATCP.

Community Offshore Wind incorporated feedback received from the Tribal Engagement Survey to develop a draft NATCP. Community Offshore Wind sent the draft NATCP to state and federally recognized Tribes/Tribal Nations for review and comment, in addition to an invitation to attend a virtual meeting to discuss the draft NATCP by email on July 21, 2022, and by hard copy mailing on July 22, 2022.

In August 2022, BOEM requested the New York Bight leaseholders pause communications with the Tribes as it relates to the development of the NATCP, in an effort to minimize the unintended burden of the review of six NATCPs on the Tribes. Community Offshore Wind complied with this request by cancelling the proposed NATCP meeting with Tribes/Tribal Nations in an email sent on August 19, 2022, and has not engaged with the Tribes, as it relates to the NATCP.

As required under Lease Stipulation 5.3.3, Community Offshore Wind held a Pre-Survey meeting with the federally recognized Tribes/Tribal Nations listed in Lease OCS-A 0539 to provide an overview of Community Offshore Wind and the geophysical survey activities, including the export cable study area, proposed to be conducted under the Survey Plan submitted to BOEM. Invitations to this meeting were sent by certified mail and email on August 25, 2022, and the meeting was held on September 9, 2022.

In response to the pre-survey meeting invitation, Mr. Michael Kickingbear Johnson from the Mashantucket Pequot Tribe of Indians informed Community Offshore Wind that, due to the number of ongoing project reviews and limited resources he has been forced to confine his participation in project reviews to the New England region and, as a result, he would not be able to consult on the Project.

Due to scheduling conflicts, a number of Tribal representatives who responded positively to the meeting invitation were unable to attend. Community Offshore Wind sent copies of the meeting Power Point presentation, a meeting summary, and an invitation to hold follow-up calls to answer questions.

A summary of the engagement activities held with Tribes is provided in Table 1, below.

**Table 1. Summary of Native American Tribe Engagement**

<b>Project Phase or Activity (i.e., pre-COP submission, transmission planning, G&amp;G surveys, etc.)</b>	<b>Types of Engagement Activities (Number of Activity)</b>	<b>Participants</b>	<b>Summary of Engagement Activities (e.g., narrative describing activities.)</b>
Post-Lease Execution – Tribal Engagement Survey	1	16 Tribal Nations	Community Offshore Wind’s Tribal Liaison submitted a survey to solicit feedback on the type and frequency of engagement activities preferred to inform development of the NATCP.
Post-Lease Execution – Submittal of the draft NATCP	1	16 Tribal Nations	Community Offshore Wind’s Tribal Liaison submitted a draft NATCP to solicit feedback.
Site Characterization and Survey – Pre-Survey Meeting	1	Representatives from 3 Tribes: Delaware Tribe of Indians, Delaware Nation, and Stockbridge-Munsee Community Band of Mohican Indians.	Community Offshore Wind held a pre-survey meeting to provide an overview of Community Offshore Wind and the geophysical survey activities proposed to be conducted under the Survey Plan submitted to BOEM.



## **4.2 Anticipated or Scheduled Engagement Activities**

During the next reporting period, Community Offshore Wind plans to offer to hold introductory engagement meetings with the Tribes/Tribal Nations at their government offices and/or Tribal Councils, to introduce the Community Offshore Wind team and provide an overview of the Project.

Community Offshore Wind also anticipates participating in a meeting organized and hosted by BOEM, to discuss the NATP with the Tribes and other New York Bight leaseholders.

As required under Lease Stipulation 5.3.3, Community Offshore Wind also expects to hold a second Pre-Survey meeting with the federally recognized Tribes listed in Lease OCS-A 0539, to provide an overview of Community Offshore Wind and the geophysical and geotechnical survey activities proposed to be conducted under the second Survey Plan submitted to BOEM.

## **4.3 Coordinated Engagement**

Community Offshore Wind is working with BOEM, the New York Bight leaseholders, and industry groups, such as American Clean Power, to minimize the burden placed on the Tribes through joint engagement activities.

During the next reporting period, Community Offshore Wind anticipates participating in a meeting organized and hosted by BOEM, to discuss the NATP with the Tribes and other New York Bight leaseholders.

## **5 Other Stakeholder Engagement**

### **5.1 Summary of Commercial and Recreational Fisheries Engagement Activities**

Community Offshore Wind has been actively engaging with fishery stakeholders since early January 2022, prior to the lease auction, to better understand the commercial and recreational fishing activity throughout the New York Bight region and the primary concerns fishermen and other ocean users have about offshore wind development in the area. These early engagements include over 75 conversations with the full range of fisheries participants, stakeholders, and interested parties; as these engagements occurred before the effective date of the Lease, they are not included in the summary table below. This outreach improved Community Offshore Wind's understanding of the characteristics and operations of fleets fishing within or near the Lease Area, as well as fishing community perspectives on developer communication and potential ecological and safety impacts of offshore wind arrays. Introductory contacts with academic and research institutions also enhanced Community Offshore Wind's awareness of regional scientific activities, needs, and opportunities for collaboration. This proactive engagement helped to shape Community Offshore Wind's approach to fisheries stakeholder outreach, as well as avoidance and mitigation of Project impacts. The feedback received directly influenced the development of the Fisheries Communications Plan and provided very valuable initial input for this Project. As an example of this early engagement, the Project's Engineering Team and Marine Affairs Team met with a scallop and surfclam fleet owner to examine the dredge gear used in these fisheries and obtain a detailed understanding of their operational characteristics and fishing practices in the Project area and region. This meeting and other interviews with captains are typical of the early interactions that produced detailed fisheries input and have



been helpful in informing early design considerations for the Project. The Community Offshore Wind fisheries team is embedded across multiple Project workstreams and is committed to integrating this knowledge across those workstreams to best serve the needs of fisheries participants and communities.

Since May 1, 2022, the Community Offshore Wind fisheries team has had 125 direct engagements with over 250 fishery participants and stakeholders. Communication and outreach methods were primarily phone or video calls and in-person meetings, but also included small group meetings, and large group meetings and presentations (in-person and virtual) with multiple participants. A few key engagements during this reporting period include:

- Mid-Atlantic Fishery Management Council (8/10/2022): Introductory presentation to Council, highlighting draft fisheries communications strategies, followed by meetings with individual fisheries participants and stakeholders.
- New England Fishery Management Council Scallop Advisory Panel (9/20/2022): Introductory presentation to industry advisors for one of two largest fisheries operating within the lease area, followed by individual discussions regarding potential fishery mitigation ideas.
- Environmental Non-Governmental and Environmental Justice Organization Open House (10/27/2022): Participation in Community Offshore Wind-hosted in-person event to introduce the project and engage with stakeholder organizations potentially impacted by the Project.

A high-level summary of Community Offshore Wind's commercial and recreational fisheries engagement activities is provided within Table 2, below, and does not include all communication interactions (e.g., multiple texts, emails, calls, etc.) that promote and support these ongoing dialogues and relationships. It is important to note that discussion topics were not limited by project phases, which are non-linear with respect to fisheries engagements, and a single engagement might cover topics relevant to multiple phases (i.e., discussion of survey activities or mitigation strategies was not limited to only these phases). Community Offshore Wind values one-on-one engagement with fisheries participants and stakeholders and understands that trust is built one relationship at a time. The fisheries team is committed to continued development of effective and efficient communication and outreach that meets the needs of fishing communities and maintaining our dialogues with fisheries stakeholders.

Community Offshore Wind also hired two Fisheries Technical Advisors/Fisheries Representatives, one full-time limited access scallop captain homeported in Cape May, New Jersey, and one gillnetter homeported in Barnegat Light, New Jersey. Both captains have decades of experience in their respective commercial fisheries, and both serve on regional fishery management council advisory committees.

**Table 2. Summary of Commercial and Recreational Fisheries Engagement**

Project Phase or Activity (i.e., pre-COP submission, transmission planning, G&G surveys, etc.)	Types of Engagement Activities (Number of Activity)	Topics of Discussions	Follow-up Actions/Activities/Outcomes
Post-auction: Project Planning and Development of Fisheries Communications Plan	<u>Commercial (28)</u> : commercial fishermen, fleet owners/managers, fishing associations, industry services, seafood processor	<ul style="list-style-type: none"> <li>• Referrals for fishermen with potential experience in and near the Lease Area.</li> <li>• Discussions of historical and current effort, locations, and types of fixed and mobile gear commercial fishing activities occurring in or transiting through the Lease Area (lobster, monkfish, black sea bass, summer flounder, sea scallop, surfclam).</li> <li>• Discussions of detailed characteristics of mobile scallop and clam gear fishing operations in the Project area and region.</li> <li>• Concerns regarding impacts of offshore wind arrays on habitat, fishing activities and access.</li> <li>• Effectiveness of different communication methods and outreach approaches at different Project phases.</li> <li>• Potential community impacts, existing community initiatives, and opportunities for collaboration.</li> <li>• Exploration of fishery research needs and mitigation approaches.</li> </ul>	<ul style="list-style-type: none"> <li>• Scheduling of additional/follow-up meetings based on referrals received.</li> <li>• Consideration of fishing industry concerns in Project design discussions.</li> <li>• Incorporation of dredge fishery operational details into early Project design considerations.</li> <li>• Incorporation of feedback into draft Fisheries Communications Plan.</li> </ul>

Project Phase or Activity (i.e., pre-COP submission, transmission planning, G&G surveys, etc.)	Types of Engagement Activities (Number of Activity)	Topics of Discussions	Follow-up Actions/Activities/Outcomes
Post-auction: Project Planning and Development of Fisheries Communications Plan (Continued)	<u>Recreational (14):</u> recreational fishermen, for-hire/charter captains, tackle or recreational industry	<ul style="list-style-type: none"> <li>• Referrals for headboats, fishing tournaments, and recreational trade shows with potential interest in project area.</li> <li>• Seasonal patterns of recreational HMS fisheries, lack of data regarding recreational HMS transit and use in New York Bight area, potential collaborative methods to address issue.</li> <li>• Potential habitat changes from offshore wind and differential impacts to inshore vs offshore recreational fisheries.</li> <li>• Need for developers to coordinate engagement with recreational community.</li> <li>• Differences in engagement between east and west coasts.</li> <li>• Potential for seasonal considerations to avoid recreational fishery impacts.</li> </ul>	<ul style="list-style-type: none"> <li>• Incorporation of feedback into draft Fisheries Communications Plan.</li> <li>• Consideration of feedback in development of draft Fisheries Mitigation Plan.</li> <li>• Consideration of concerns in project design discussions.</li> <li>• Participation in ACP Recreational Fisheries initiative.</li> </ul>

Project Phase or Activity (i.e., pre-COP submission, transmission planning, G&G surveys, etc.)	Types of Engagement Activities (Number of Activity)	Topics of Discussions	Follow-up Actions/Activities/Outcomes
Post-auction: Project Planning and Development of Fisheries Communications Plan (Continued)	State or federal agency (7)	<ul style="list-style-type: none"> <li>• Project fisheries team introductions to state and federal agency staff.</li> <li>• Outreach and engagement approaches, reducing stakeholder burden on commercial and recreational fisheries participants.</li> <li>• Coordination among developers, and between developers and agencies, regarding communication, outreach, and monitoring efforts.</li> <li>• Applicability of specific monitoring methods to offshore wind.</li> <li>• Potential engagement with various state agencies fisheries working groups and research initiatives.</li> <li>• Mitigation approaches and collaborative opportunities, avoidance of impact.</li> </ul>	<ul style="list-style-type: none"> <li>• Incorporation of feedback into draft Fisheries Communications Plan.</li> <li>• Consideration of feedback in development of draft Fisheries Mitigation Plan.</li> <li>• Consideration of feedback in calls with academic and research institutions.</li> </ul>
Post-auction: Project Planning and Development of Fisheries Communications Plan (Continued)	Academic or research institutions/programs (4)	<ul style="list-style-type: none"> <li>• Discussion of current offshore wind research and monitoring efforts.</li> <li>• Utility of non-invasive sampling techniques.</li> <li>• Elements of monitoring program design at different scales.</li> </ul>	<ul style="list-style-type: none"> <li>• Incorporation of feedback in development of future monitoring plans.</li> </ul>

Project Phase or Activity (i.e., pre-COP submission, transmission planning, G&G surveys, etc.)	Types of Engagement Activities (Number of Activity)	Topics of Discussions	Follow-up Actions/Activities/Outcomes
Post-auction: Project Planning and Development of Fisheries Communications Plan (Continued)	Fisheries representative or advisor, fisheries liaisons (6)	<ul style="list-style-type: none"> <li>Stakeholder concerns regarding EMF.</li> <li>Fixed gear fishery operations in NY Bight</li> <li>Regional differences in scallop fishery. operations.</li> <li>Monitoring program logistics, potential future coordination.</li> <li>Knowledge sharing and best practices.</li> </ul>	<ul style="list-style-type: none"> <li>Inclusion of input in development of future monitoring and draft Fisheries Mitigation Plans.</li> <li>Consideration of input in project design discussions.</li> <li>Incorporation of feedback into draft Fisheries Communications Plan.</li> </ul>
Post-auction: Project Planning and Development of Fisheries Communications Plan (Continued)	Regional fishery management council (2)	<ul style="list-style-type: none"> <li>Discussions with council staff regarding fisheries operating in and around Lease.</li> <li>Introductory in-person presentation on project during Mid-Atlantic Council meeting; provided review of draft outreach and mitigation approaches (approximately 50 in-person/virtual attendees, including members).</li> </ul>	<ul style="list-style-type: none"> <li>Incorporation of feedback into draft Fisheries Communications Plan.</li> <li>Consideration of feedback in Project design discussions.</li> <li>Inclusion of feedback in development of future monitoring and mitigation plans.</li> </ul>
Post-auction: Project Planning and Development of Fisheries Communications Plan (Continued)	Other (3)	<ul style="list-style-type: none"> <li>Discussions with subsea cable industry regarding experience with fisheries in region and future coordination between the Project and subsea cables in the area.</li> </ul>	<ul style="list-style-type: none"> <li>Consideration of feedback in development of draft Fisheries Mitigation Plan.</li> <li>Incorporation of input into draft Fisheries Communications Plan.</li> </ul>

Project Phase or Activity (i.e., pre-COP submission, transmission planning, G&G surveys, etc.)	Types of Engagement Activities (Number of Activity)	Topics of Discussions	Follow-up Actions/Activities/Outcomes
Site Assessment – Survey Planning (ongoing)	<u>Commercial (30)</u> : commercial fisherman, fleet owner/manager, commercial fishing association	<ul style="list-style-type: none"> <li>• Introductions with commercial scallop advisors prior to and after advisory panel meeting.</li> <li>• Distributed hard copy maps and information on Lease Area and fishery liaison contact information.</li> <li>• Discussed anticipated survey activities within Lease Area and possible cable routes, and potential overlap with fishery activities.</li> <li>• Time needed to move fixed gear.</li> <li>• General concerns regarding safety and wind array design elements.</li> <li>• Referrals for other contacts with potential interest in Lease Area and survey activities.</li> <li>• Preferred communication methods in advance of survey activities.</li> </ul>	<ul style="list-style-type: none"> <li>• Additional contacts in fishery impacted by project.</li> <li>• Consideration of feedback in future design conversations.</li> <li>• Incorporation of feedback into communications and outreach approaches.</li> </ul>
Site Assessment – Survey Planning (ongoing) (continued)	<u>Recreational (11)</u> : charter/for-hire fisherman, tackle or recreational industry	<ul style="list-style-type: none"> <li>• Distributed hard copy maps and information on Lease Area and fishery liaison contact information.</li> <li>• Discussed potential overlap of headboat fishing activities with survey activities in Lease Area and potential cable routes.</li> <li>• Concerns regarding future access, pace, and scope of development.</li> <li>• Best practices for communicating with for-hire fleet.</li> </ul>	<ul style="list-style-type: none"> <li>• Incorporation of feedback into communication and outreach approaches.</li> <li>• Consideration of input in future Project design conversations.</li> </ul>
Site Assessment – Survey Planning (ongoing) (continued)	State or federal agency (1)	<ul style="list-style-type: none"> <li>• Discussed publicly available information to inform recreational outreach efforts.</li> </ul>	<ul style="list-style-type: none"> <li>• List of potential resources.</li> </ul>

Project Phase or Activity (i.e., pre-COP submission, transmission planning, G&G surveys, etc.)	Types of Engagement Activities (Number of Activity)	Topics of Discussions	Follow-up Actions/Activities/Outcomes
Site Assessment – Survey Planning (ongoing) (continued)	Academic or research institutions/programs (2)	<ul style="list-style-type: none"> <li>• Review of offshore wind-related research and survey technologies and potential opportunities for coordination across developers.</li> <li>• Discussion of specific fishery research needs and potential mitigation approaches.</li> <li>• Regional research frameworks and data standardization.</li> </ul>	<ul style="list-style-type: none"> <li>• Inclusion of feedback into development of future monitoring program design, collaborations, and coordination.</li> <li>• Incorporation of feedback into development of draft Fisheries Mitigation Plan.</li> </ul>
Site Assessment – Survey Planning (ongoing) (continued)	Fisheries representative or advisor, fisheries liaison (4)	<ul style="list-style-type: none"> <li>• Potential for fixed gear interactions with cable routes under consideration.</li> <li>• Potential fishery interactions within Lease Area during survey work.</li> <li>• Planning for survey logistics and coordination.</li> <li>• Pre-survey communication methods.</li> </ul>	<ul style="list-style-type: none"> <li>• Consideration of feedback into survey scheduling and planning.</li> <li>• Incorporation of feedback into survey outreach.</li> </ul>
Site Assessment – Survey Planning (ongoing) (continued)	Regional fishery management council (1)	<ul style="list-style-type: none"> <li>• Provided in-person introductory project presentation to New England Council Scallop Advisory Panel (approximately 25-30 in-person/virtual attendees).</li> </ul>	<ul style="list-style-type: none"> <li>• Consideration of post-meeting feedback into future survey outreach and mitigation approaches.</li> </ul>
Site Assessment – Survey Planning (ongoing) (continued)	Other (1)	<ul style="list-style-type: none"> <li>• Coordination of survey logistics with onboard fisheries liaison provider.</li> </ul>	<ul style="list-style-type: none"> <li>• Incorporation of feedback into survey outreach.</li> </ul>



Project Phase or Activity (i.e., pre-COP submission, transmission planning, G&G surveys, etc.)	Types of Engagement Activities (Number of Activity)	Topics of Discussions	Follow-up Actions/Activities/Outcomes
Project Development – Development of Fisheries Mitigation Plan (ongoing) <sup>1</sup>	<u>Commercial (3):</u> seafood processor, commercial fisherman	<ul style="list-style-type: none"> <li>• Discussed potential impacts of Project to shoreside businesses and seafood suppliers, and potential collaborative opportunities.</li> <li>• Community needs and potential mitigation approaches, and concerns regarding the pace and scope of offshore wind development.</li> <li>• Discussed process related to possible compensation.</li> </ul>	<ul style="list-style-type: none"> <li>• Incorporation of feedback in development of draft Fisheries Mitigation Plan.</li> </ul>
Project Development – Development of Fisheries Mitigation Plan (ongoing) (continued)	State or federal agency (4)	<ul style="list-style-type: none"> <li>• Discussion of general compensatory mitigation concepts and associated data challenges.</li> <li>• Monitoring approaches, data sharing, and collaborative opportunities.</li> <li>• Fisheries mitigation development related to federal survey mitigation strategy.</li> </ul>	<ul style="list-style-type: none"> <li>• Incorporation of feedback in development of draft Fisheries Mitigation Plan.</li> <li>• Consideration in development of future monitoring program.</li> </ul>
Project Development – Development of Fisheries Mitigation Plan (ongoing) (continued)	Academic or research institution or program (2)	<ul style="list-style-type: none"> <li>• Fishery research needs and potential incorporation into mitigation approaches.</li> <li>• New and emerging technologies and collaborative opportunities.</li> </ul>	<ul style="list-style-type: none"> <li>• Incorporation of feedback in development of draft Fisheries Mitigation Plan.</li> </ul>

---

<sup>1</sup> Note: Input pertinent to this phase from engagements in other phases are not enumerated here to avoid double-counting but include 28 engagements from the “Post-auction – Project Planning and Development of Fisheries Communications Plan” phase, and 4 engagements from the “Site Assessment – Survey Planning” phase.

Project Phase or Activity (i.e., pre-COP submission, transmission planning, G&G surveys, etc.)	Types of Engagement Activities (Number of Activity)	Topics of Discussions	Follow-up Actions/Activities/ Outcomes
Project Development – Development of Fisheries Mitigation Plan (ongoing) (continued)	Other (1)	<ul style="list-style-type: none"> <li>Engagement with elected official staff regarding community partnerships</li> </ul>	<ul style="list-style-type: none"> <li>Inclusion of input in mitigation and outreach approaches.</li> </ul>
Project Development – Development of Fisheries Mitigation Plan (ongoing) (continued)	Environmental non-governmental organizations (1)	<ul style="list-style-type: none"> <li>Informal team introduction to group of approximately 40 participants; discussion of area fisheries and potential monitoring and mitigation approaches.</li> </ul>	<ul style="list-style-type: none"> <li>Established contacts for future engagements.</li> </ul>

### 5.1.1 Anticipated or Scheduled Engagement Activities

During the next reporting period, Community Offshore Wind will provide a presentation at the upcoming American Fisheries Society Mid-Atlantic Chapter Annual Meeting in New Jersey to explore fisheries monitoring programs and mitigation approaches.

Community Offshore Wind's fisheries team also anticipates the following activities:

- Continued outreach regarding upcoming survey activities with both commercial and recreational fisheries stakeholders and participants, fisheries survey managers, fishery managers, and USCG.
- Further development of monitoring programs in collaboration with academic and research institutions and state and federal fisheries agency partners, and will explore coordination with other developers (see Section 5.1.2).
- The development of a process to geographically characterize regional recreational fisheries transit in coordination with the American Clean Power (ACP) Fisheries Subcommittee and the recreational fishing community; and
- Exploring potential engagement opportunities at upcoming recreational fishing and boating trade shows and fishing tournaments.

### 5.1.2 Coordinated Engagement

During this reporting period, Community Offshore Wind began exploring potential opportunities for coordination on fisheries-related issues through one-on-one conversations with other developers. One of the fisheries team members met other fisheries liaisons at a joint event hosted by developers in the New England region during the June 2022 Mid-Atlantic Fishery Management Council meeting in Riverhead, New York. The fisheries team also visited port hours hosted by offshore wind developers from Massachusetts and Rhode Island during an engagement trip to New York and discussed possible ways to collaborate on outreach and communications with fishermen on Long Island. The Project's Marine Affairs team met with other developers to discuss potential coordination on fisheries outreach at the American Clean Power (ACP) Offshore Wind conference in Providence, Rhode Island. Additionally, Community Offshore Wind has played an active role in efforts being facilitated by the ACP Fisheries Subcommittee to develop a framework for effective engagement with the recreational fishing community. Community Offshore Wind also joined the Responsible Offshore Science Alliance (ROSA) Advisory Council and anticipates future coordination and collaboration on fisheries research and monitoring through ROSA.

As noted in Section 5.1.1, Community Offshore Wind anticipates exploring development of a collaborative process to characterize recreational fisheries transits with the recreational industry and other developers through ACP. Community Offshore Wind also anticipates exploring the potential for coordinated approaches to monitoring programs with developers and other partners, likely in spring 2023.

## 5.2 Summary of Agency Engagement Activities

Since the effective date on the Lease, Community Offshore Wind drafted the Agency Communications Plan and had, as required in Lease Stipulation 3.1.2.3, and reached out to the federal and state agencies anticipated to support the authorization of the Project to offer an introduction to Community Offshore Wind and provide an overview of the Agency Communications Plan.

Community Offshore Wind has also regularly engaged with BOEM, meeting on an as-needed basis.

A summary of the engagement activities held with Agencies is provided in Table 3, below.

**Table 3. Summary of Agency Engagement**

<b>Project Phase or Activity (i.e., pre-COP submission, transmission planning, G&amp;G surveys, etc.)</b>	<b>Types of Engagement Activities (Number of Activity) and Participants</b>	<b>Topics of Discussions</b>	<b>Follow-up Actions/Activities/Outcomes</b>
Post-Lease Execution – Submittal of the draft Agency Communications Plan	Email sent to the following federal and state agencies: <ul style="list-style-type: none"> <li>• USACE</li> <li>• NOAA</li> <li>• US EPA</li> <li>• USFWS</li> <li>• USCG</li> <li>• DoD</li> <li>• NPS</li> <li>• NYS</li> <li>• NJ</li> </ul>	Community Offshore Wind sent an email introducing the Project and Lease Area, providing detail on the Lease Stipulation for the Agency Communications Plan, provided a copy of the Agency Communications Plan, and offered to hold a meeting to discuss.	Community Offshore Wind requested feedback on the Agency Communications Plan and a date/time to schedule an introduction meeting.
Post-Lease Execution – Community Offshore Wind Introduction and Agency Communications Plan Discussion	Meetings held with the following federal and state agencies: <ul style="list-style-type: none"> <li>• NOAA</li> <li>• US EPA</li> <li>• NYS</li> <li>• NJ</li> </ul>	Community Offshore Wind provided an overview of the Team, Project, and Lease Area, in addition to an overview of the Agency Communications Plan and type and frequency of engagement proposed.	Community Offshore Wind incorporated feedback into the Agency Communications Plan and will schedule the next engagement opportunity based on agency preference.

<b>Project Phase or Activity (i.e., pre-COP submission, transmission planning, G&amp;G surveys, etc.)</b>	<b>Types of Engagement Activities (Number of Activity) and Participants</b>	<b>Topics of Discussions</b>	<b>Follow-up Actions/Activities/Outcomes</b>
Project Development – Regular Engagement	Meetings held with BOEM to discuss the development of the Lease Area and relevant Lease Stipulations	Community Offshore Wind discussed the status of the communications plans, survey planning and geophysical and geotechnical (G&G) requirements, and anticipated Project timeline.	Community Offshore Wind to continue providing BOEM with regular Project updates.

### 5.2.1 Anticipated or Scheduled Engagement Activities

During the next reporting period, Community Offshore Wind will continue to offer introductory engagement meetings with federal and state agencies to introduce the Community Offshore Wind team and provide an overview of the Project.

Community Offshore Wind will also request meetings with the applicable federal and state agencies to discuss site characterization and assessment plans, to seek input and feedback prior to commencing biological and cultural resource survey activities, as required in Lease Stipulation 2.1.

Community Offshore Wind also anticipates requesting meetings with applicable federal and state agencies to discuss the initial Project development, and receive feedback on the preliminary export cable routing, onshore Project locations, and Project Design Envelope (PDE).

### 5.2.2 Coordinated Engagement

Community Offshore Wind is working with BOEM, the New York Bight leaseholders, and industry groups, such as American Clean Power, to hold joint engagement activities, where appropriate.

During the next reporting period, Community Offshore Wind anticipates that it will continue participating in joint-meetings with BOEM and the other New York Bight leaseholders. Community Offshore Wind will also work with the New York Bight leaseholders to identify opportunities for joint engagement with federal and state agencies.

## 5.3 **Summary of Other Stakeholder Engagement Meetings**

Since the effective date on the Lease, Community Offshore Wind began its engagement with ENGOS, community-based organizations, ocean users, and other stakeholders by sending numerous emails introducing our joint venture, project, and lease area. Meetings both in person and virtual have been held with various stakeholders. Community Offshore Wind has incorporated feedback received from these groups to develop partnerships, volunteer programs, and sponsorship funding tailored specifically to support the disadvantaged communities within our Project development area to leave

long-lasting positive impacts on our communities while minimizing and avoiding any negative impacts caused by our offshore wind development Project.

We will prioritize partnerships that bring educational and professional opportunities directly to neighborhoods of disadvantaged communities. To ensure that each individual community receives the support it needs to flourish alongside the energy transition, the Community Offshore Wind programs utilize a hyper local approach, tailoring our outreach and involvement to fit the unique needs of each individual stakeholder group within those disadvantaged communities. We will continue our legacy of listening to local leaders, incorporating feedback in real-time, and producing positive impact throughout every stage of development.

A summary of the engagement activities held with other stakeholders is provided in Table 4, below.

**Table 4. Summary of Agency Engagement**

<b>Project Phase or Activity (i.e., pre-COP submission, transmission planning, G&amp;G surveys, etc.)</b>	<b>Types of Engagement Activities (Number of Activity) and Participants</b>	<b>Topics of Discussions</b>	<b>Follow-up Actions/Activities/ Outcomes</b>
Post-Lease Execution – Introductory emails sent	Numerous emails and meetings with entities within the following sectors have been sent: <ul style="list-style-type: none"> <li>• Workforce Development Agencies</li> <li>• Universities and Educational Institutions</li> <li>• Environmental ENGOS</li> <li>• Community based organizations</li> <li>• Environmental Justice groups</li> </ul>	Community Offshore Wind Project and Lease Area.	Continuing conversations and engagement to determine partnership opportunities and to keep lines of communication open as project progresses.
Project Development – Waterfront Alliance Conference	Engaged with multiple attendees.	Discussed Lease Area, Project, and timeline.	Follow up meetings were set up with interested attendees.
Project Development – City of Water Day with Coney Island Beautification Project	Engaged with multiple community members.	Discussed Lease Area, Project, and timeline.	Follow up meetings were set up with interested attendees.
Project Development – MLK Center donation	Donated school supplies to the MLK Center in Long Beach, NY.	Introduction to Community Offshore Wind	Follow up conversations about future partnerships.

<b>Project Phase or Activity (i.e., pre-COP submission, transmission planning, G&amp;G surveys, etc.)</b>	<b>Types of Engagement Activities (Number of Activity) and Participants</b>	<b>Topics of Discussions</b>	<b>Follow-up Actions/Activities/ Outcomes</b>
Project Development – Hudson River Community Sailing	Funding sailing and STEM education for students in title one schools throughout 5 NYC boroughs	Introduction to Community Offshore Wind	Will continue conversations to engage with the students.
Project Development – Open House Meet & Greet for ENGO & EJ groups	Held event at Brooklyn Botanic Gardens.	Community Offshore Wind introduced the Project and Lease Area and answered any questions.	Follow up meetings were set up.
Project Development – Regular Engagement	Continuous emails, meetings and engagement with EJ groups, ENGO groups, and community-based groups.	Project timeline and partnership discussions.	Follow up meetings and conversations.
International Partnership Forum Conference (Atlantic City, NJ)	Sponsor	Introduction to Community Offshore Wind	Continued regular engagement with stakeholders
Nest Summit (New York, NY)	Sponsor	Introduction to Community Offshore Wind	Continued regular engagement with stakeholders
ACE-NY/NYLCV Developer Meet and Great (Long Island, NY)	Sponsor	Introduction to Community Offshore Wind	Continued regular engagement with stakeholders
Long Island Association Developer	—	Introduction to Community Offshore Wind	Continued regular engagement with stakeholders
Congressional delegation for New York and New Jersey	Virtual and in-person meetings	Introduction to Community Offshore Wind	Continued regular engagement with stakeholders
New York State elected officials	Virtual and in-person meetings	Introduction to Community Offshore Wind	Continued regular engagement with stakeholders



### 5.3.1 Anticipated or Scheduled Engagement Activities

During the next reporting period, Community Offshore Wind will continue engaging with elected officials in order to ensure that they are engaged on any Project elements that will impact their communities, with a particular focus on jobs, workforce and economic development, and environmental mitigation. We plan to coordinate regularly with elected officials and/or their staff virtually, in-person, and by email as the project progresses to keep them informed and share their feedback with the project team to shape design elements. This activity is already underway and will involve both regular check ins as well as increased activity around major milestones.

### 5.3.2 Coordinated Engagement

Community Offshore Wind is working with stakeholders and industry groups, such as the American Clean Power Association and New York Offshore Wind Alliance, to identify and hold joint engagement activities, where appropriate.

## APPENDICES

### Appendix A: Native American Tribes and Parties Applicable To Project

PARTY	PARTY TYPE
<b>Native American Tribes</b>	
Absentee-Shawnee Tribe of Indians of Oklahoma	FTribe
Delaware Nation	FTribe
Delaware Tribe of Indians	FTribe
Eastern Shawnee Tribe of Oklahoma	FTribe
Mashantucket Pequot Tribal Nation	FTribe
Mashpee Wampanoag Tribe	FTribe
Mohegan Tribe of Indians of Connecticut	FTribe
Narragansett Indian Tribe	FTribe
Shawnee Tribe	FTribe
Shinnecock Indian Nation	FTribe
Stockbridge-Munsee Community Band of Mohican Indians	FTribe
Wampanoag Tribe of Gay Head-Aquinnah	FTribe
Nanticoke Leni-Lenape Tribal Nation	STribe
Powhatan Renape Nation	STribe
Ramapough Lenape Nation	STribe
Unkechaug Nation	STribe
<b>OTHER STAKEHOLDERS</b>	
<b><i>Commercial and Recreational Fishing</i></b>	
Commercial Scallop Fishery	CFish
Commercial Surfclam Fishery	CFish
Commercial Gillnet Fishery (Monkfish, Dogfish)	CFish
Commercial Lobster Fishery	CFish
Commercial Trawl Fishery	CFish
Commercial Longline Fishery (Tilefish)	CFish
Commercial Fishing Associations	CFish
Commercial Seafood Processors	CFish
Commercial Industry Services	CFish
New York For-hire Headboat Fisheries	RFish
New Jersey For-hire Headboat Fisheries	RFish
New York For-hire Charter Boat Fisheries	RFish
New Jersey For-hire Charter Boat Fisheries	RFish
New York Private Recreational Anglers	RFish
New Jersey Private Recreational Anglers	RFish

<b>PARTY</b>	<b>PARTY TYPE</b>
New York Recreational Fishing Organizations	RFish
New Jersey Recreational Fishing Organizations	RFish
New York Recreational Bait & Tackle Shops or Industry	RFish
New Jersey Recreational Bait & Tackle Shops or Industry	RFish
Regional Fishery Management Councils	RFMC
New England Fishery Management Council	RFMC
Mid-Atlantic Fishery Management Council	RFMC
Atlantic States Marine Fisheries Commission	RFMC
Academic and Research Institutions or Programs	AR
Responsible Offshore Development Alliance (RODA)	CFish
<b><i>Federal and State Agencies</i></b>	
BOEM	FA
BSEE	FA
USACE	FA
NOAA	FA
US EPA	FA
USFWS	FA
USCG	FA
DoD	FA
NPS	FA
NYSDOS	SA
NYSDEC	SA
NYSDPS	SA
NYSDOT	SA
NJDEP	SA
CT DEEP	SA
RI DEM	SA
MADMF	SA
MD DNR	SA
DE DNREC	SA
NCDMF	SA
VMRC	SA
<b><i>Other Ocean Users</i></b>	
New York Bight Subsea Cable Owners and Operators	SCO
North Atlantic Submarine Cable Association	SCO
National Environmental NGOs	NGO
New York Environmental NGOs	NGO
New Jersey Environmental NGOs	NGO

PARTY	PARTY TYPE
Oceana	NGO
Citizens Campaign for the Environment	NGO
The Nature Conservancy	NGO
Defenders of Wildlife	NGO
National Wildlife Federation	NGO
Sierra Club	NGO
Natural Resources Defense Council	NGO
National Audubon Society	NGO
Surfrider Foundation	NGO
Wildlife Conservation Society	NGO
New York League of Conservation Voters	NGO
New Jersey League of Conservation Voters	NGO
Scenic Hudson	NGO
Riverkeeper	NGO
Waterfront Alliance	NGO
RETI Center	NGO
LISC NY	NGO
New York Environmental Justice Groups	EJG
Long Island Environmental Justice Groups	EJG
Brooklyn Environmental Justice Groups	EJG
New York Environmental Justice Groups	EJG
Staten Island Environmental Justice Groups	EJG
New Jersey Environmental Justice Groups	EJG
Monmouth County Environmental Justice Groups	EJG
Ocean County Environmental Justice Groups	EJG
WE ACT	EJG
UPROSE	EJG
Academic and Research Institutions or Programs	ERI
New York Community Colleges	ERI
New Jersey Community Colleges	ERI
State University New York	ERI
Stony Brook University	ERI
Cornell University	ERI
Rutgers, The State University of New Jersey	ERI
Monmouth University	ERI
New York State Energy Research and Development Authority (NYSERDA)	ERI
New Jersey Research and Monitoring Initiative (RMI)	ERI
Regional Wildlife Science Collaborative (RWSC)	ERI

<b>PARTY</b>	<b>PARTY TYPE</b>
Responsible Offshore Science Alliance (ROSA)	ERI
National Offshore Wind Research and Development Consortium	ERI
New York Marine Rescue Center	ERI
New York Aquarium	ERI
Industry Groups	IG
American Clean Power	IG
Business Network for Offshore Wind	IG
Maritime Industry/Mariners	M
American Waterways Operators	M
World Shipping Council	M
State Working Groups	SWG
NYSERDA Environmental Technical Working Group (E-TWG)	SWG
NYSERDA Fisheries Technical Working Group (F-TWG)	SWG
NYSERDA Maritime Technical Working Group (M-TWG)	SWG
New Jersey Environmental Resources Offshore Wind Working Group	SWG
Chambers of Commerce	CCom
Workforce Development Agencies	WDA
New York Community Based Organizations	CG
Spin The Yard	CG
Billion Oyster Project	CG
NYC Parks Stewardship	CG
BOC Network, Inc.	CG
Southwest Brooklyn Industrial Development Corporation	CG
Long Island Progressive Coalition	CG
The Wilkins Group	CG
New Jersey Community Based Organizations	CG
New York Coastal Communities	CC
Long Island Coastal Communities	CC
Brooklyn Coastal Communities	CC
New York City Coastal Communities	CC
Staten Island Coastal Communities	CC
New Jersey Coastal Communities	CC
Monmouth County Coastal Communities	CC
Ocean County Coastal Communities	CC
New York Underserved Communities	UC
Long Island Underserved Communities	UC
Brooklyn Underserved Communities	UC
New York City Underserved Communities	UC

PARTY	PARTY TYPE
Staten Island Underserved Communities	UC
New Jersey Underserved Communities	UC
Monmouth Underserved Coastal Communities	UC
Ocean County Underserved Communities	UC

Party types:

CC = Coastal Community

Ccom = Chambers of Commerce

CFish = Commercial Fishing Industry CG = Community Group

EJG = Environmental Justice Groups

ERI = Educational and Research Institutions

FA = Federal Agency

FTribe = Federally Recognized Tribe

IG: Industry Group

M = Maritime Industry/Mariners

NGO = Environmental and Public Interest Non-Governmental Organizations

RFish = Recreational Fishing Industry

RFMC = Regional Fishery Management Councils and Commissions

SA = State Agency

SCO = Submarine Cable Operators

STribe = State Recognized Tribe

SWG = State Working Group

UC = Underserved Community

WDA = Workforce Development Agencies

## **Appendix B: Communication Plans**

**Native American Tribes Communication Plan:** Confidential, submitted to BOEM under separate cover.

**Fisheries Communications Plan:** [https://communityoffshorewind.com/-/media/Project/RWE/COffshoreWind/fisheries/Final-COSW-Fisheries-Communications-Plan-v1\\_2022-08-24.pdf](https://communityoffshorewind.com/-/media/Project/RWE/COffshoreWind/fisheries/Final-COSW-Fisheries-Communications-Plan-v1_2022-08-24.pdf)

**Agency Communication Plan:** Confidential, submitted to BOEM under separate cover.