

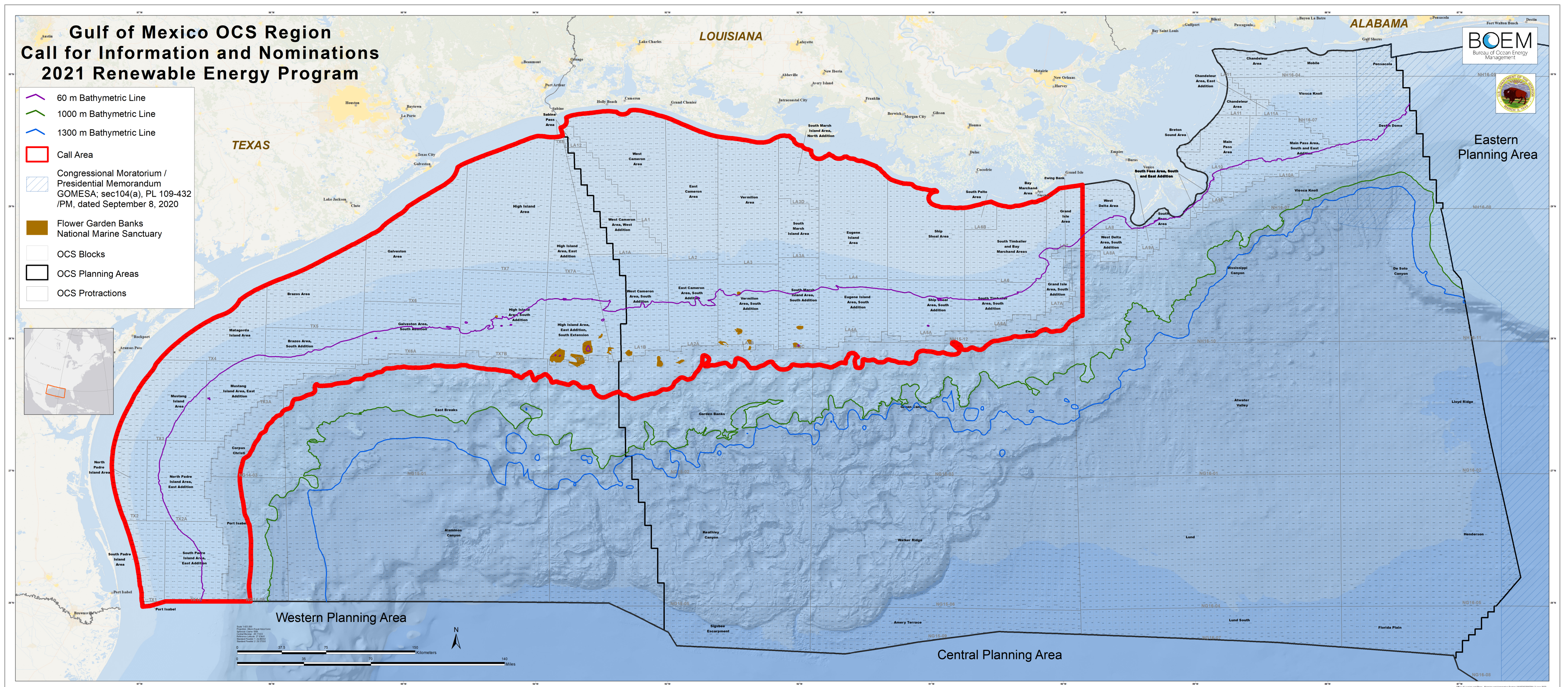


GULF OF MEXICO CALL AREA

Outer Continental Shelf Renewable Energy Call Area

In 2009, BOEM announced final regulations for the Outer Continental Shelf (OCS) Renewable Energy Program. The Energy Policy Act of 2005 and various regulations provide a framework for issuing leases, easements and rights-of-way for OCS activities that support production and transmission of energy from sources other than oil and natural gas. BOEM is responsible for offshore renewable energy development in Federal waters and anticipates substantial future development on the OCS.

This map depicts the Call Area on the Gulf of Mexico OCS.



For more information on BOEM's Gulf of Mexico Renewable Energy Activities, visit:
<https://www.boem.gov/renewable-energy/state-activities/gulf-mexico-activities>