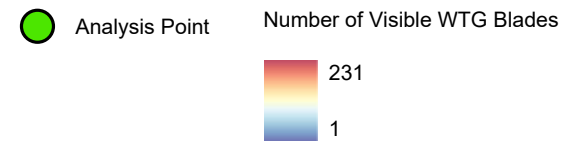
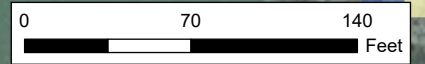
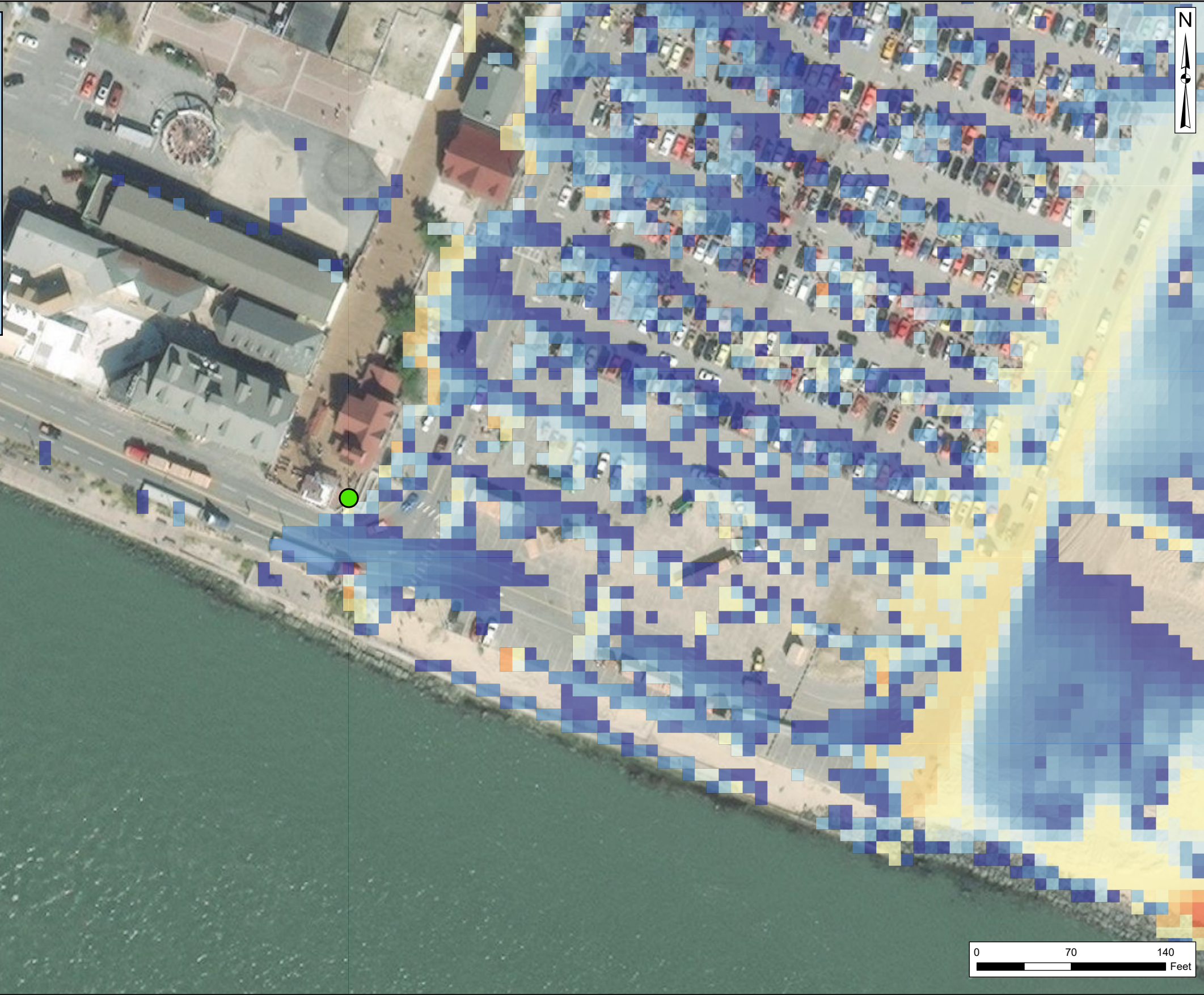
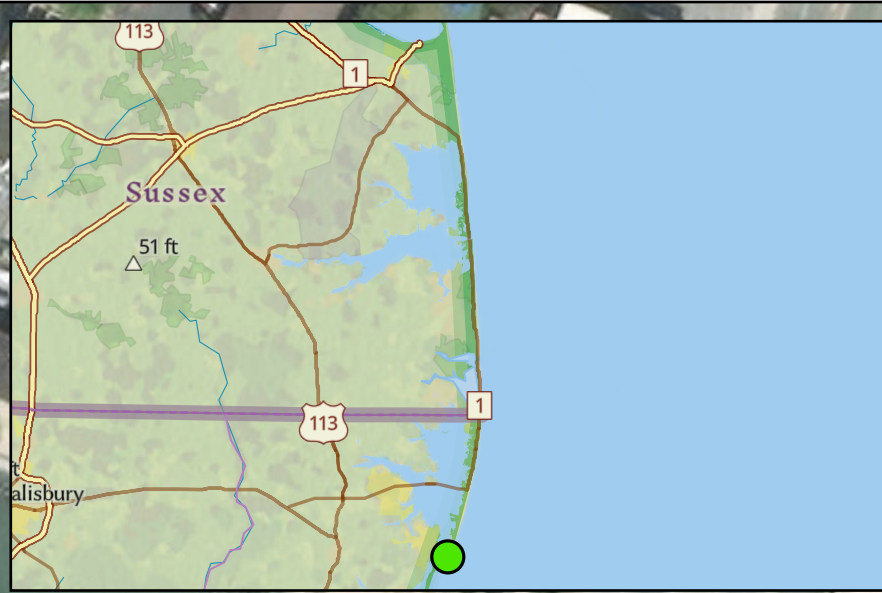


## Attachment I-1. Intervisibility Maps



MAJUSIP\projects\SUSSEX Wind\US Wind\Maryland Viewshed\US Wind\_20230624\Figures APPROX\02\_04th Street Beach\_20230731.aprx - REVISED: 07/24/2023 - SCALE: 1 - when printed at 14x17

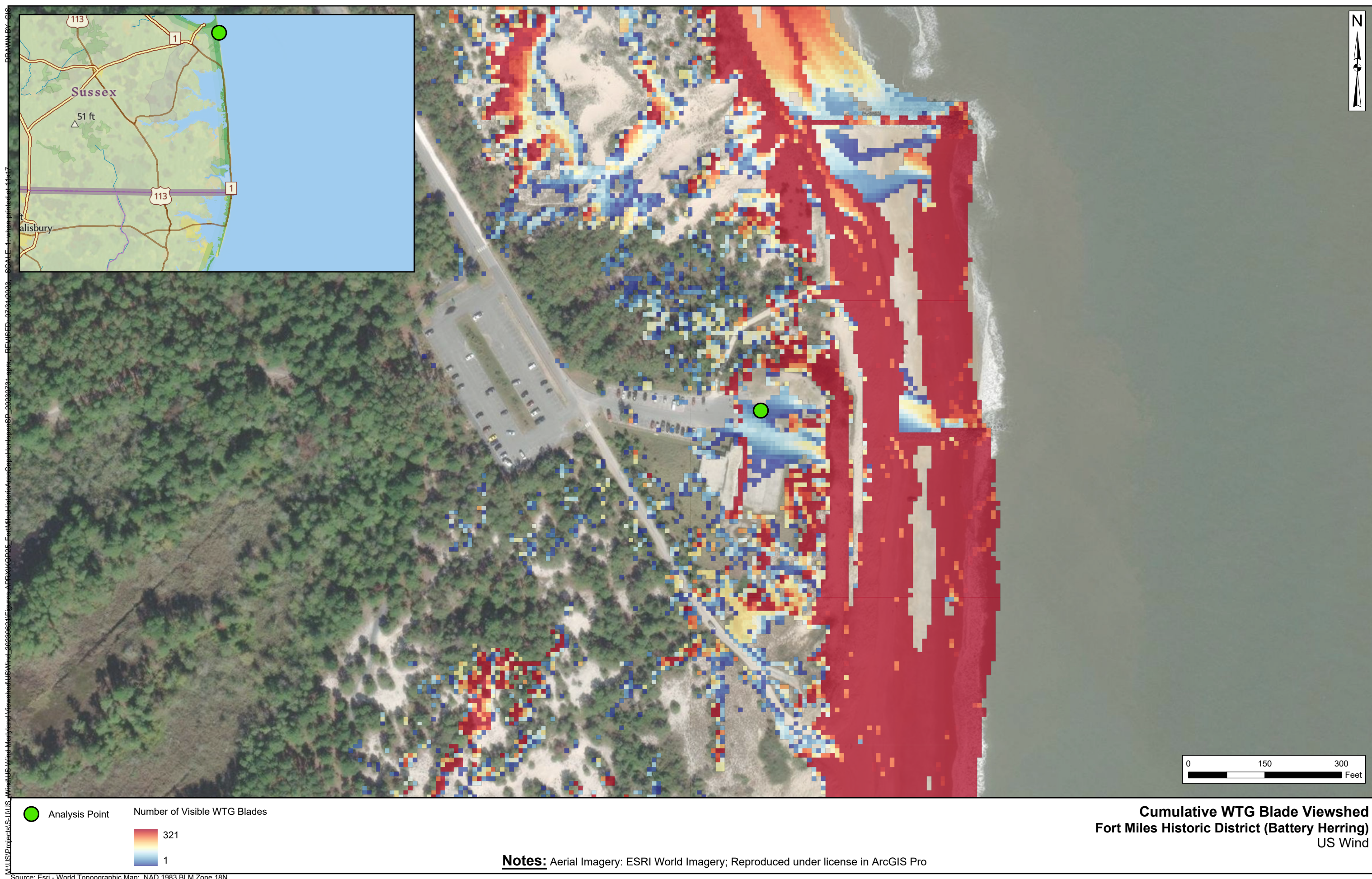


**Cumulative WTG Blade Viewshed**  
**US Coast Guard Tower, Ocean City**  
 US Wind

**Notes:** Aerial Imagery: ESRI World Imagery; Reproduced under license in ArcGIS Pro

Source: Esri - World Topographic Map; NAD 1983 BLM Zone 18N

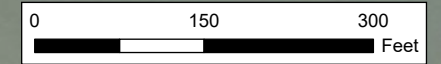




MAJUSIP\proj\GIS\LULUS\_A\Wind\Map\Wind\_Visualization\USWind\_20200624\Figures\_APPROX\KOP05E\_FortMilesHistoricDistrictBatteryHerringSP\_20200624.aprx - REVISED: 07/24/2020 - SCALE: 4x when printed at 4x47  
 DRAWN BY: CUS

● Analysis Point

**Number of Visible WTG Blades**  
 321  
 1



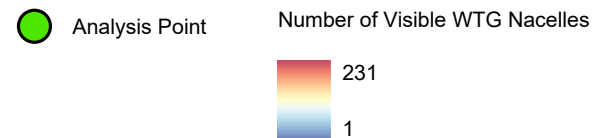
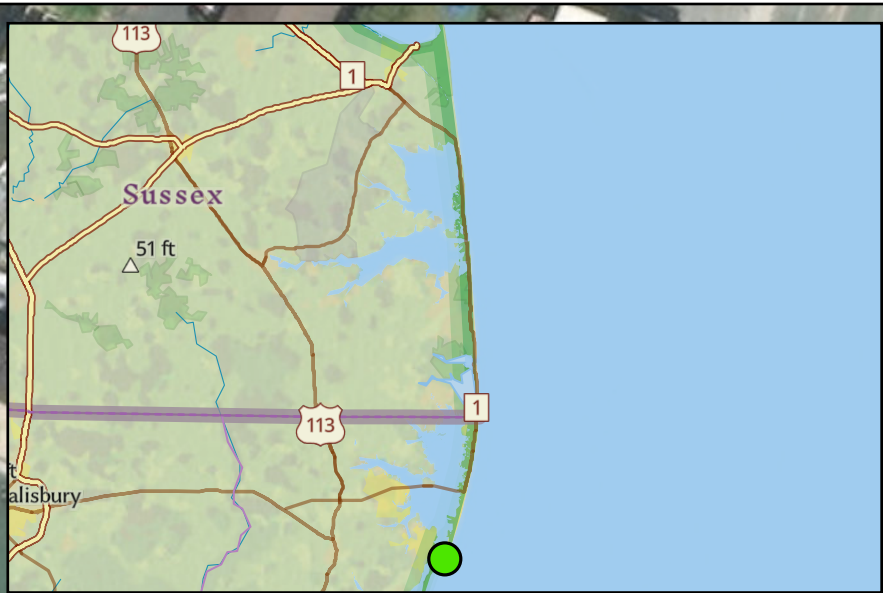
**Cumulative WTG Blade Viewshed**  
**Fort Miles Historic District (Battery Herring)**  
 US Wind

**Notes:** Aerial Imagery: ESRI World Imagery; Reproduced under license in ArcGIS Pro

Source: Esri - World Topographic Map; NAD 1983 BLM Zone 18N



MAJUSIP\projects\SUSSEX - Wind\Maryland Viewshed\US Wind\_20230624\Figures APPROX\KOP02\_04H\StreetViewshed\_20230731\_01.aprx - REVISED: 07/24/2023 - SCALE: 1 - when printed at 14x17

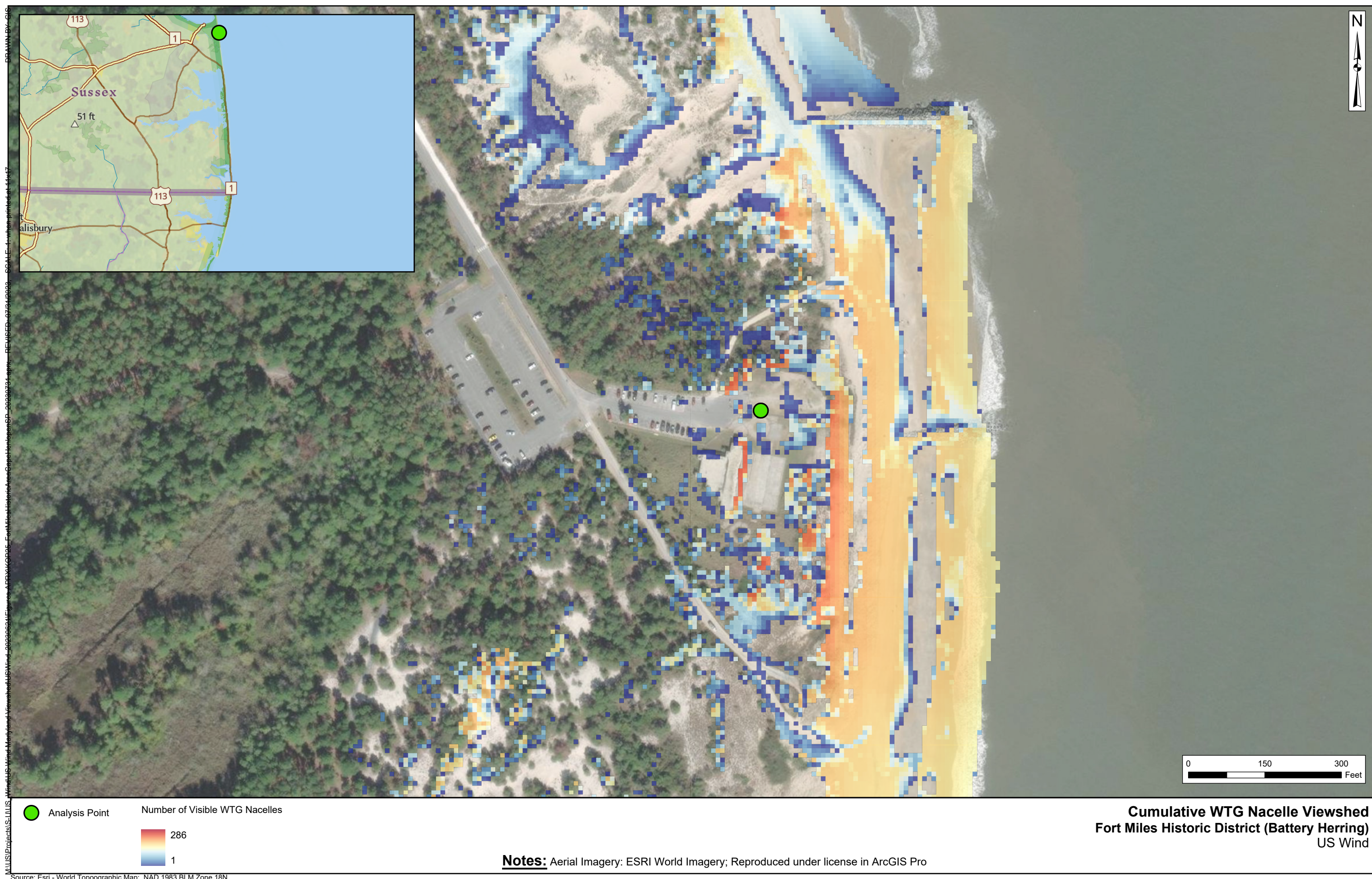


**Cumulative WTG Nacelle Viewshed  
US Coast Guard Tower, Ocean City  
US Wind**

**Notes:** Aerial Imagery: ESRI World Imagery; Reproduced under license in ArcGIS Pro

Source: Esri - World Topographic Map; NAD 1983 BLM Zone 18N



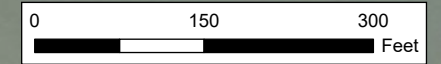


MAJUSIP\proj\GIS\US Wind\Map\Legend\Views\usWind\_20200624\Figures\APPX\KOP05E\_FortMilesHistoricDistrictBatteryHerringSP\_20200624.aprx - REVISED: 07/24/2020 - SCALE: 4x when printed at 4x47  
 DRAWN BY: CUS

● Analysis Point

Number of Visible WTG Nacelles

	286
	1



**Cumulative WTG Nacelle Viewshed**  
**Fort Miles Historic District (Battery Herring)**  
 US Wind

**Notes:** Aerial Imagery: ESRI World Imagery; Reproduced under license in ArcGIS Pro

Source: Esri - World Topographic Map; NAD 1983 BLM Zone 18N



## Attachment I-2. View Angle Maps

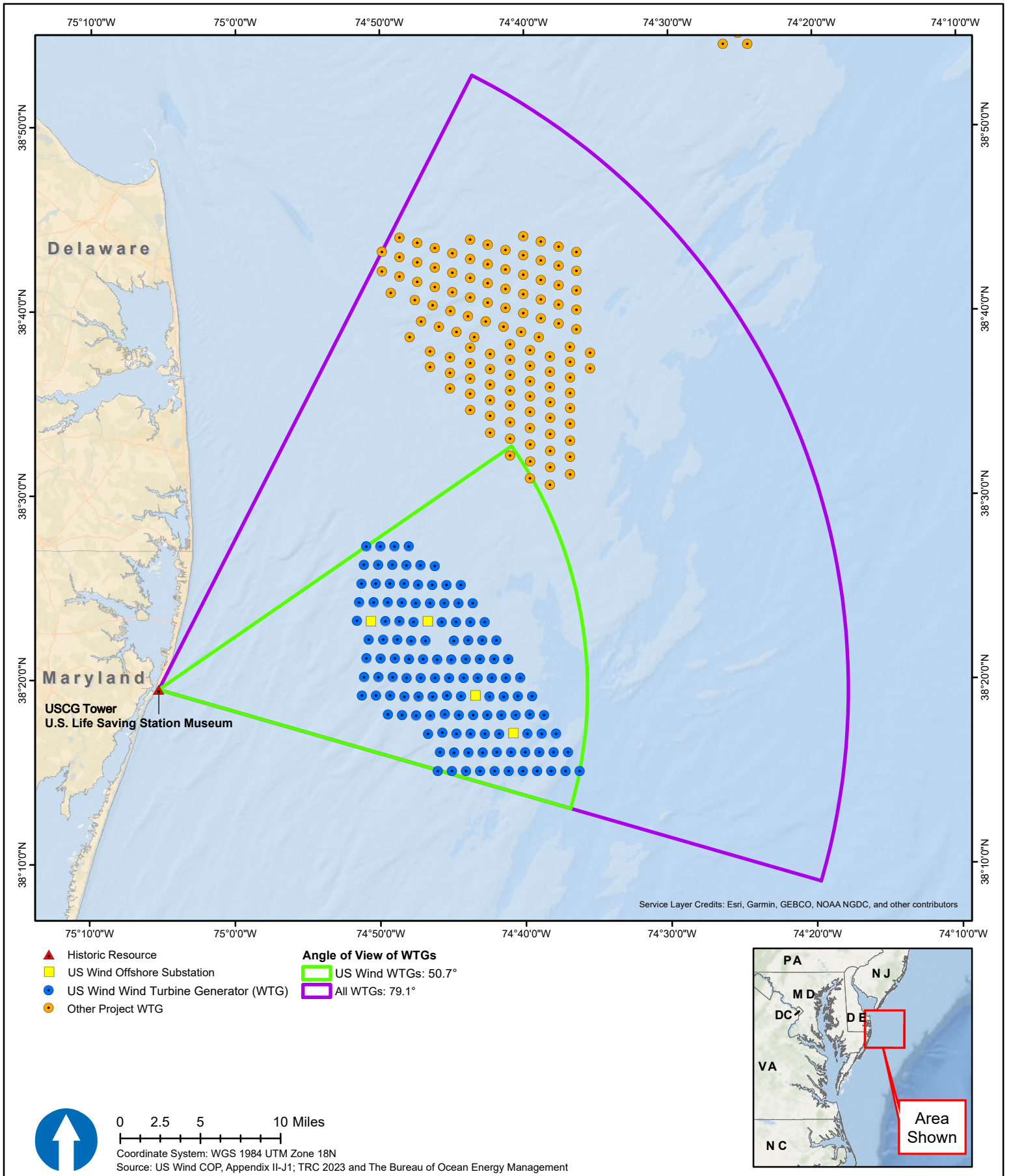


Figure I.3-1. U.S. Coast Guard Tower

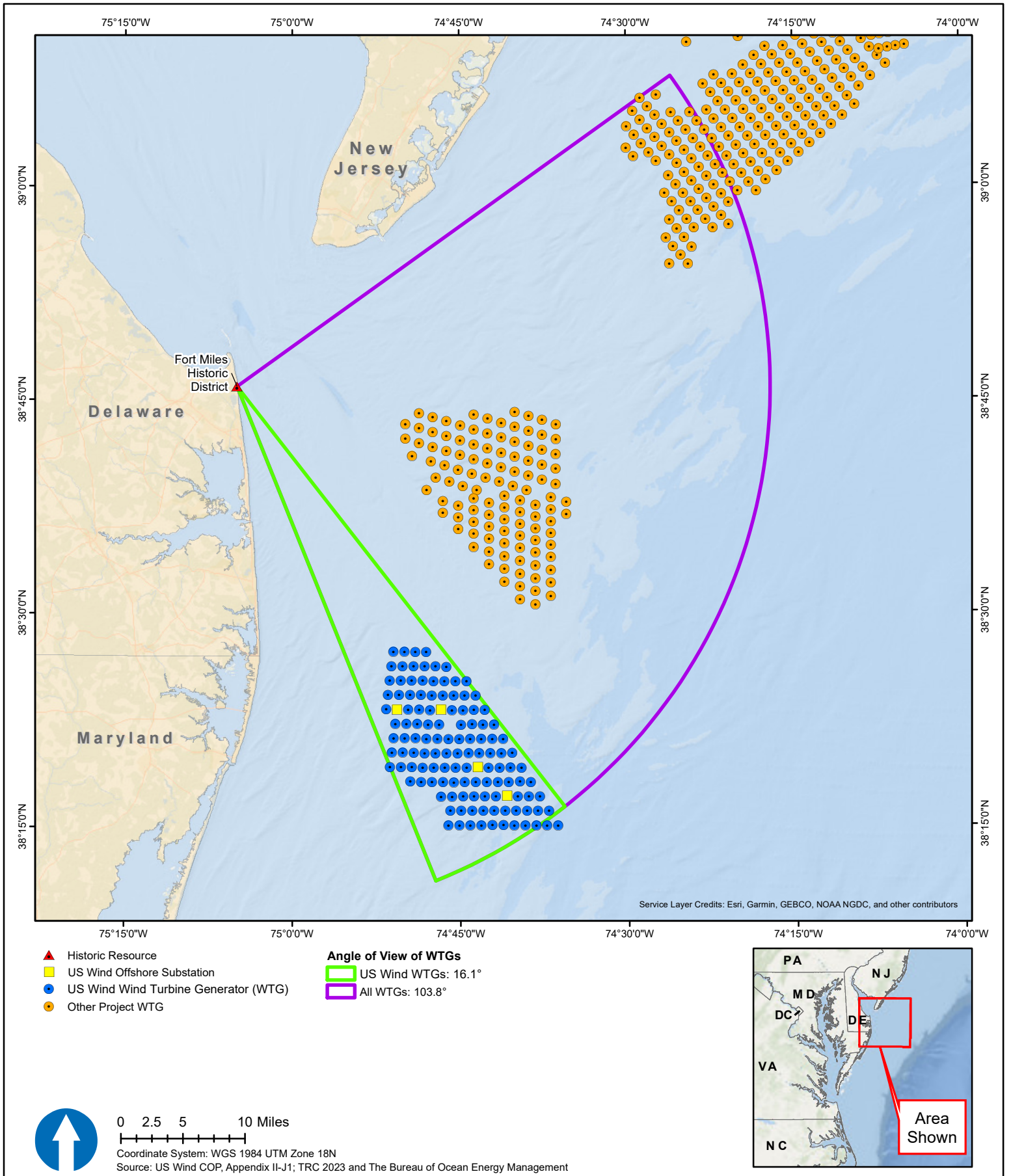


Figure I.3-3. Fort Miles Historic District