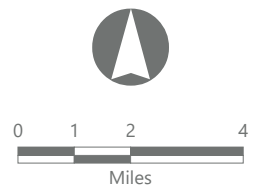
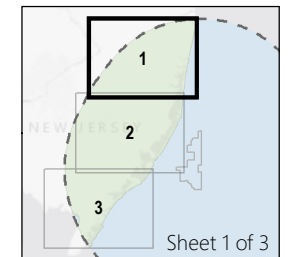


Atlantic Shores Offshore Wind

OCS-A 0549

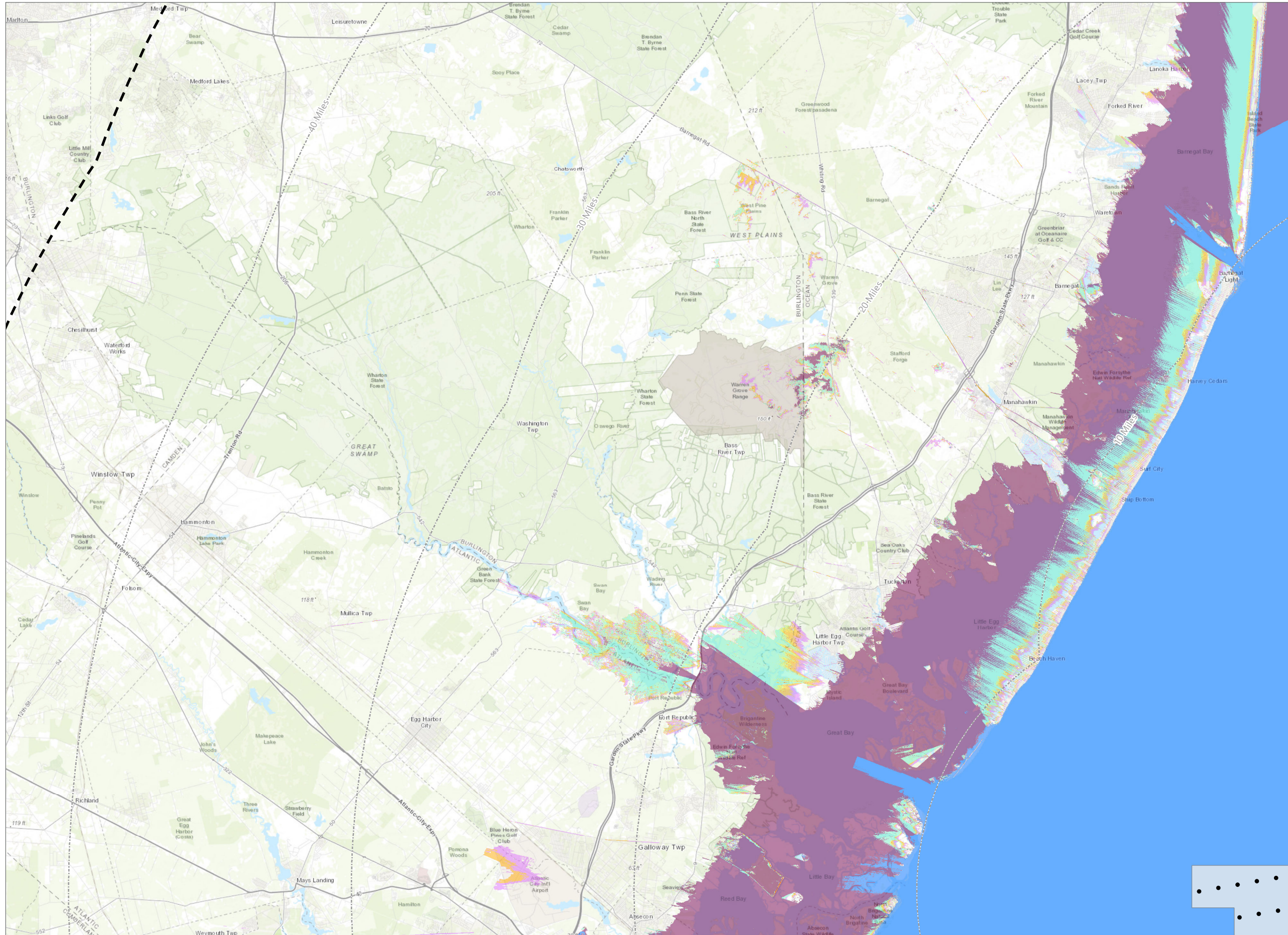
Seascape, Landscape, and Visual Impact Assessment

- WTG Blade Tip Potentially Visible
- WTG Bunny Ear Position Potentially Visible
- WTG Nacelle AOWL Potentially Visible
- WTG Top of Nacelle Potentially Visible
- WTG Hub Potentially Visible
- WTG Mid-Tower AOWL Potentially Visible
- WTG Navigation Light Potentially Visible
- Geographic Analysis Area



Prepared January 26, 2024
 Basemap: Esri "World Topographic Map" map service

Potential WTG viewshed visibility is based on the screening effects of topography, vegetation, and structures as represented in lidar data (collection years ranging from 2008 to 2018); curvature of the Earth (including a standard refraction index of 0.13); and the following height assumptions: 319 meter blade tip height, 246.1 meter bunny ear position, 187.5 meter nacelle AOWL 186.5 meter top of nacelle, 171.5 meter hub, 91.8 meter mid-tower AOWL, and 17 meter navigation light.

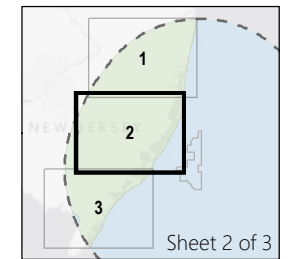


Atlantic Shores Offshore Wind

OCS-A 0549

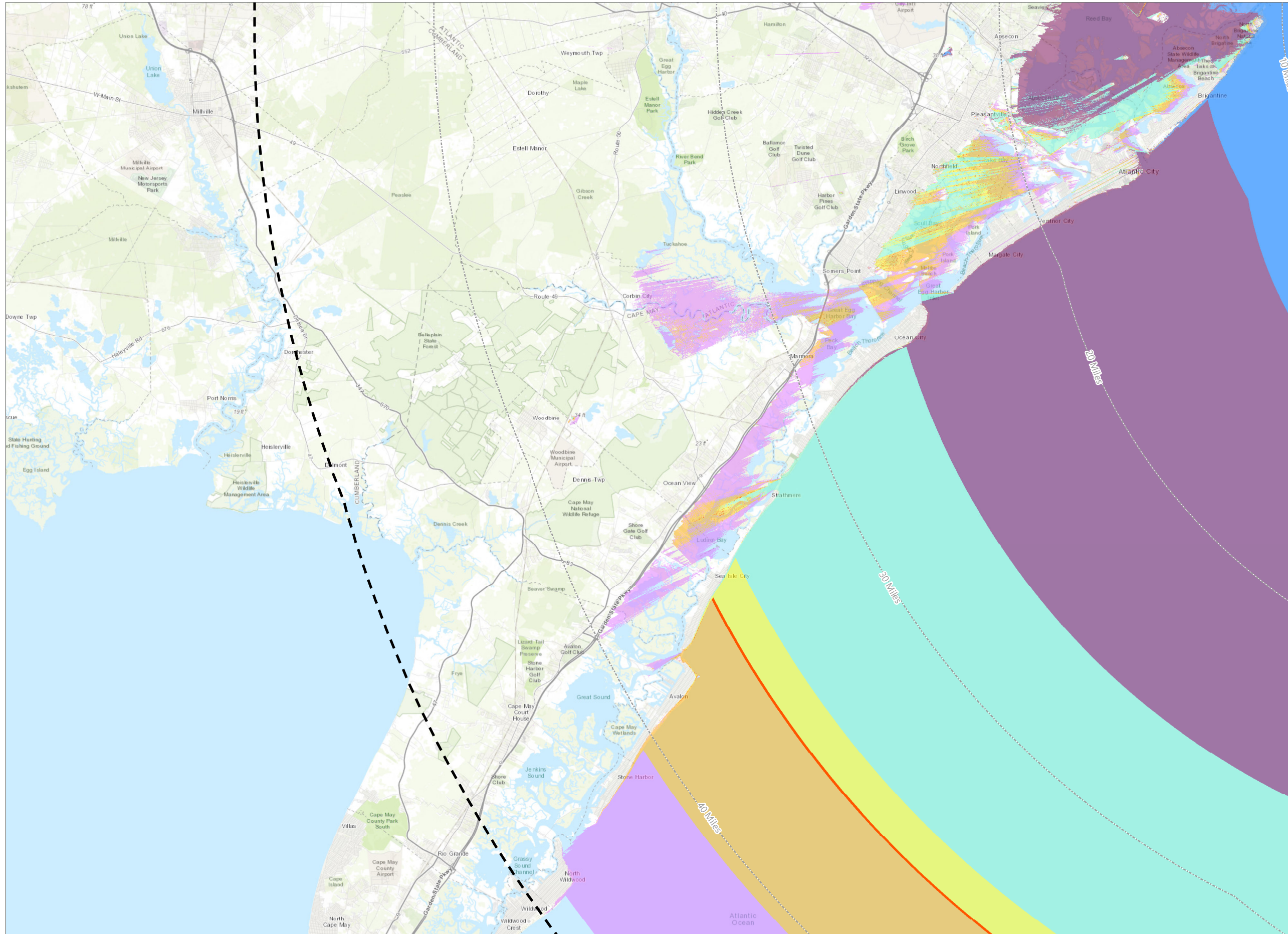
Seascape, Landscape, and Visual Impact Assessment

- Wind Turbine Generator
- Wind Turbine Area (OCS-A 0549)
- WTG Blade Tip Potentially Visible
- WTG Bunny Ear Position Potentially Visible
- WTG Nacelle AOWL Potentially Visible
- WTG Top of Nacelle Potentially Visible
- WTG Hub Potentially Visible
- WTG Mid-Tower AOWL Potentially Visible
- WTG Navigation Light Potentially Visible
- Geographic Analysis Area



Prepared January 26, 2024
Basemap: Esri "World Topographic Map" map service

Potential WTG viewshed visibility is based on the screening effects of topography, vegetation, and structures as represented in lidar data (collection years ranging from 2008 to 2018); curvature of the Earth (including a standard refraction index of 0.13); and the following height assumptions: 319 meter blade tip height, 246.1 meter bunny ear position, 187.5 meter nacelle AOWL 186.5 meter top of nacelle, 171.5 meter hub, 91.8 meter mid-tower AOWL, and 17 meter navigation light.

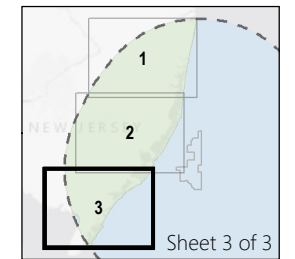


Atlantic Shores Offshore Wind

OCS-A 0549

Seascape, Landscape, and Visual Impact Assessment

- WTG Blade Tip Potentially Visible
- WTG Bunny Ear Position Potentially Visible
- WTG Nacelle AOWL Potentially Visible
- WTG Top of Nacelle Potentially Visible
- WTG Hub Potentially Visible
- WTG Mid-Tower AOWL Potentially Visible
- WTG Navigation Light Potentially Visible
- Geographic Analysis Area



Prepared January 26, 2024
 Basemap: Esri "World Topographic Map" map service

Potential WTG viewshed visibility is based on the screening effects of topography, vegetation, and structures as represented in lidar data (collection years ranging from 2008 to 2018); curvature of the Earth (including a standard refraction index of 0.13); and the following height assumptions: 319 meter blade tip height, 246.1 meter bunny ear position, 187.5 meter nacelle AOWL 186.5 meter top of nacelle, 171.5 meter hub, 91.8 meter mid-tower AOWL, and 17 meter navigation light.