



BOEM Bureau of
Ocean Energy Management

New York Bight Programmatic Environmental Impact Statement (PEIS) and Consultation Overview

Scoping Meetings

Courtney Elliton | Office of Environmental Programs

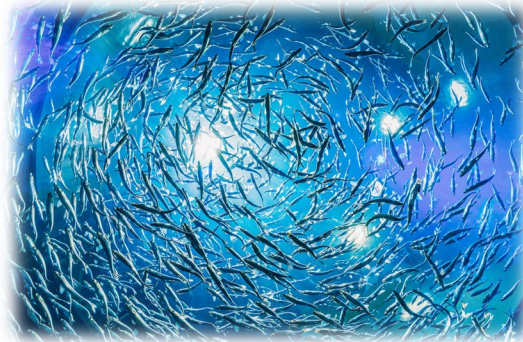
Project Manager, New York Bight Programmatic EIS

Programmatic EIS & Consultations

BOEM's goal is to develop a Programmatic Environmental Impact Statement (PEIS) for the **New York (NY) Bight lease areas**. Project-specific National Environmental Policy Act (NEPA) documents at the Construction and Operations (COP) phase will **incorporate this PEIS by reference**.



Section 106, National Historic Preservation Act (NHPA)



Magnuson-Stevens Fishery Conservation Act



Endangered Species Act (ESA)



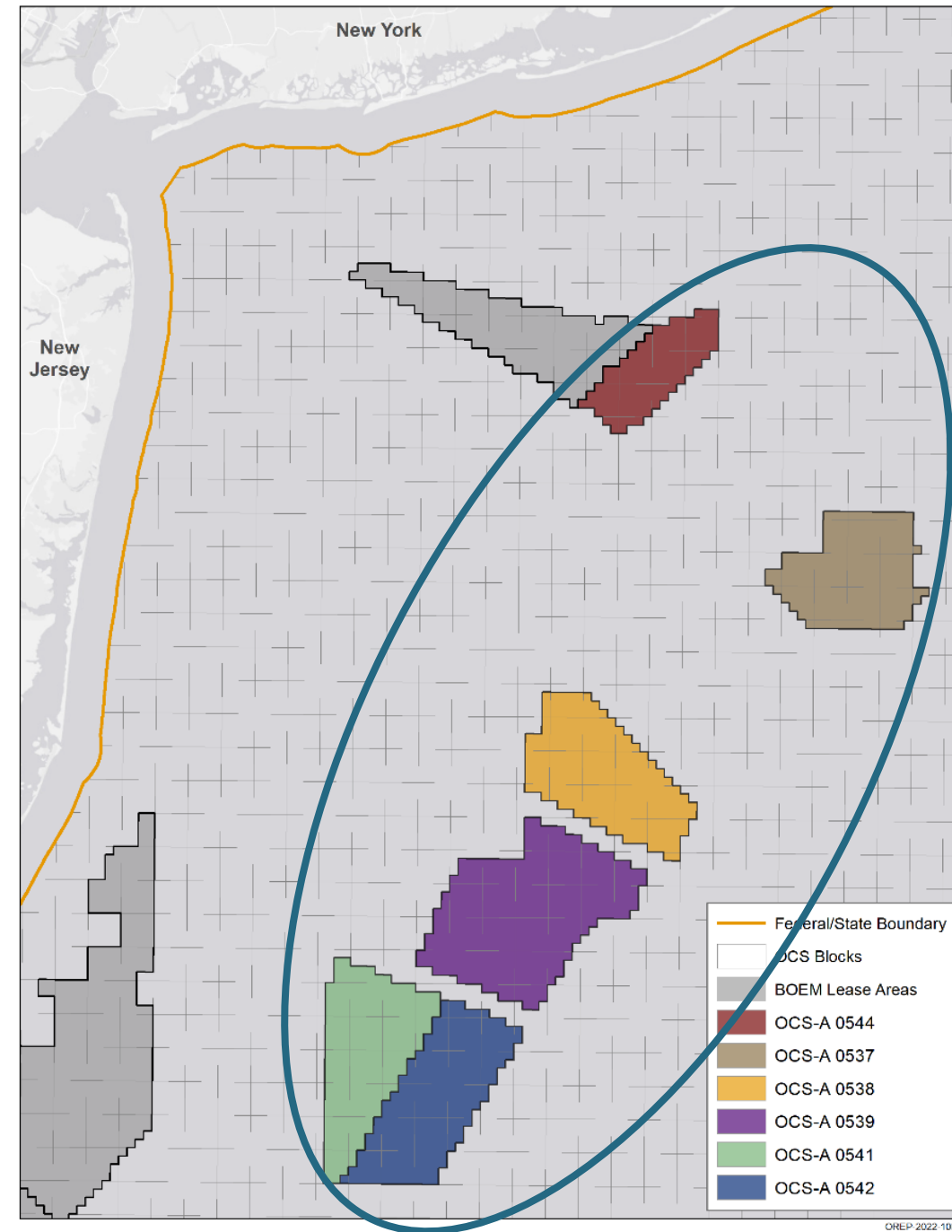
New York Bight Lease Areas

- Regional analysis of these six lease areas

- OCS-A-0544
- OCS-A-0537
- OCS-A-0538
- OCS-A-0539
- OCS-A-0541
- OCS-A-0542

- New York and New Jersey coast

- Expecting at least 6 Construction and Operations Plans



Stages of Leasing and Development – Environmental Review Points

Planning & Analysis

Leasing

Site Assessment

Construction & Operations

BOEM Initiates Leasing Process
(Request for Information/Call)



BOEM Identifies Wind Energy Areas

BOEM Publishes Leasing Notices

0 ——— ~1/2

0 ——— <1 1/2

BOEM Awards Lease



Lessee Submits SAP



BOEM Conducts Pre-Survey Meetings/Planning



Lessee Conducts Site Assessment & Surveys



BOEM Deems COP Complete & Sufficient



BOEM Reviews COP



BOEM Environmental & Technical Reviews



Installation



BOEM Environmental Reviews of Leasing Activities



BOEM Holds Lease Auction

BOEM Reviews SAP



WE ARE HERE

Lessee Submits COP
(with Project Design Envelope – optional)



Lessee Submits Facility Design & Installation Reports



Objectives of the NY Bight Programmatic EIS

Through the development of this Programmatic EIS, BOEM will:

- Analyze regional affected environment and environmental consequences
- Conduct a focused, regional cumulative analysis
- Establish a framework for tiering of project-specific environmental analyses
- Identify, analyze, and adopt (if appropriate) programmatic avoidance, minimization, mitigation, and monitoring measures for the NY Bight lease areas
- Provide predictability and consistency to cooperating agencies, partners, and developers



Representative Project Design Envelope

The representative project design envelope may include the following components:

- **Layout of turbines**
- Setbacks identified in the leases
- **Size and number of turbines**
- Offshore substation dimensions, number, and location
- **Type of foundation**
- Foundation installation method
- Scour protection
- Approach to cable emplacement
- **Location of landfall(s)**
- Onshore substation location
- Point of grid interconnection
- Ports, fabrication facilities, and staging areas
- Timing of onshore and offshore activities
- **Associated activities, e.g., vessel trips**



Regional Cumulative Analysis

The cumulative analysis for this PEIS will consider:

- **Incremental impact of a representative project** in the NY Bight
- **Full buildout (representative project) across six lease areas**
- **Ongoing Activities** (offshore and non-offshore wind)
- **Planned Activities (offshore and non-offshore wind)**
 - Planned offshore: Executed lease but no approved Construction and Operations Plan (COP)
 - Planned non-offshore: All other activities (e.g., increased vessel traffic, continued coastal development)

The geographic range of the analysis will depend on the geographic analysis area for each resource.



NY Bight PEIS Record of Decision (ROD)

The ROD for the NY Bight PEIS is expected to:

1. identify certain programmatic avoidance, minimization, mitigation, and monitoring (AMMM) measures BOEM may require as conditions of approval for the NY Bight lease areas,
2. identify the AMMM measures that should (or should not) be considered in the Construction and Operations Plan (COP)-specific NEPA analysis for the NY Bight lease areas, and
3. require the use of a tiered review process that relies on the analyses in the PEIS for the COPs expected to be filed for the six NY Bight lease areas

The ROD for the NY Bight PEIS will NOT approve any activities.



NY Bight PEIS Timeline

Milestone	Date
NOI Published	July 15, 2022
<i>Scoping Period</i>	<i>July 15 – August 15, 2022</i>
Draft PEIS Published	Fall 2023
<i>Comment Period</i>	<i>Fall 2023</i>
Final PEIS Published	Summer 2024
ROD Published	Summer 2024



BOEM

Bureau of Ocean Energy
Management

BOEM.gov



Courtney Elliton | Courtney.Elliton@boem.gov | 703-787-1740

For more information on the New York Bight Programmatic EIS, visit:
<https://www.boem.gov/renewable-energy/state-activities/new-york-bight>