



BOEM Bureau of
Ocean Energy Management

New York / New Jersey Offshore Wind Environmental Justice Forum

Wednesday, October 26, 2022
10:30 a.m. - 12:30 p.m. ET

Holly Fowler, Laura Mansfield, Sara Parkison, Meghan Cornelison, Paige Foley

Zoom Webinar Instructions – Technical Assistance

- If you encounter technical difficulties during the meeting, please email Caisey Hoffman at choffman@kearnswest.com or message Caisey Hoffman (Co-Host) using Zoom chat.
- If you are participating by phone, raise your hand for help by dialing *9.



Agenda

- Introductions and Agenda Overview
- Community Announcements
- Discuss Forum Participant Guidelines
- Discuss Input Status Report
- Present on the Programmatic Environmental Impact Statement
- Discuss Coordination, Engagement, and Process Improvements
- Next Steps and Adjourn



Proposed Meeting Objectives

- Identify priorities, needs, and issues to address through BOEM's draft New York Bight (NYB) Programmatic Environmental Impact Statement (PEIS) specific to environmental justice and underserved communities.
- Develop a shared understanding of challenges affecting and efforts to engage environmental justice populations and underserved communities on offshore wind issues across New York and New Jersey.
- Provide updates on how BOEM is processing previous input for consideration in BOEM's decision making processes so far and invite feedback to continue refining next steps.



Process Guidelines

- “Honor” the agenda.
- Participate actively and respectfully.
- Use the “raise hand” function to join the discussion queue.
- Facilitator will mind the queue.
- When you speak, provide your name and affiliation.
- Participants are muted when they enter the meeting but can adjust their audio and video functions.
- Lessees are joining the meeting as observers and will be muted throughout the meeting. If you have a question for a lessee, BOEM can facilitate introductions after the meeting.
- Use the “chatbox” function to ask questions, comment, or receive technical assistance.



Introductions

BOEM Directorate Remarks

BOEM Staff Introductions

Participant Introductions

please insert your name, organization, and affiliation in the chat box



The background features a light blue grid pattern on a white surface. A single orange sticky note is placed in the center-left area. The text 'Participant Bulletin Announcements' is overlaid on the grid, centered horizontally and partially overlapping the sticky note.

Participant Bulletin Announcements

Bulletin Board Announcements

Space to **share information** on developments and activities **affecting environmental justice and underserved communities** related to offshore wind off the coast of NY & NJ.

Announcements may include:

- Engagement processes underway
- Available opportunities
- Needed information or support



EJF Participant Guidelines Discussion

Roundtable NY/NJ Engagement Strategy Discussion Results

On presentation of engagement format options:

- “The approach depends on the quality and scope of existing meetings, which may be missing key partners and community representatives. This means it is **likely not sufficient to tag onto existing meetings.**”
- “Partner-led efforts are important but if the goal is real movement, **oftentimes partner voices alone are not sufficient** to get things done with developers. A BOEM-led approach gives developers more impetus to follow through.”
- “There are meaningful things that the community has been asking for in various engagement meetings, that developers haven’t followed through on. **Community members need more accountability from responsible agencies (e.g., BOEM, NYSERDA).**”
- “Open lines of communication are critical **to allow two-way dialogue** with BOEM and community leaders.”
- “The formula is that even the busiest **people will make time when they feel like their feedback is being received and implemented** through two-way communication.”



Roundtable NY/NJ Engagement Strategy Discussion Results – continued

Poll Question: Do you or your agency/organization have a dedicated, long-term capacity to participate in a regularly held, BOEM-led engagement meeting?

- **Yes, high priority: 43%**
- Maybe, not enough information: 23%
- Yes, but not long-term: 17%
- Occasionally, but low priority: 10%
- Not yet: 7%
- No, not a priority: 0%

Poll Question: How frequently would BOEM-led meetings need to be held?

- **Quarterly: 52%**
- Bi-monthly: 19%
- Monthly: 11%
- Other: 11%
- Bi-annually: 7%

Poll Question: Would coordinating lessee engagement through regular BOEM meetings be preferred?

- **Maybe with conditions: 50%**
- Yes, it would be preferred: 25%
- Not enough information: 15%
- No, BOEM-led meetings are not preferred for lessee engagement: 10%

Poll Question: How would you prefer to be engaged?

- **BOEM-led: 37%**
- Another format option: 32%
- Partner-led: 21%
- No preference/unsure: 11%
- No meeting, status quo (public process): 0%



Environmental Justice Forum Goals

1. **Identify priorities, needs, and issues** to address through BOEM's draft New York Bight PEIS specific to environmental justice and underserved communities.
2. **Improve information-sharing and coordination** across agencies, governments, lessees, and community-based organizations.
3. **Create greater accountability** by providing transparency to communities on whether and how their input has affected the decision-making process.
4. **Grow long-term relationships** with communities that are founded on mutual respect, understanding, and collaboration.
5. **Reduce barriers to participation**, increase access to environmental reviews, and create better-informed decisions.



Review Draft Participant Guidelines



Poll Everywhere

THREE WAYS TO PARTICIPATE



BY COMPUTER

Go to
www.pollev.com/kwpoll2
on your internet browser.



BY SMART PHONE

Go to
www.pollev.com/kwpoll2
on your internet browser.



BY TEXT MESSAGE

Text
kwpoll2 to 22333
on your mobile device



Which of the following statements regarding the participant guidelines apply to you?

I don't think we need a participant guidelines for these meetings. **A**

I like the participant guidelines but it requires major modifications and discussion. **B**

I like the participant guidelines but it requires minor modifications. **C**

I like the participant guidelines and would support adopting it in its current state. **D**

I am indifferent about the participant guidelines. **E**

I am unsure and require more time to think about it. **F**

Are you comfortable with the approach to have lessees participate in "listen-only" mode?

Yes.

No, I'd rather they didn't attend.

No, I'd rather they engage.

I'm not sure yet.

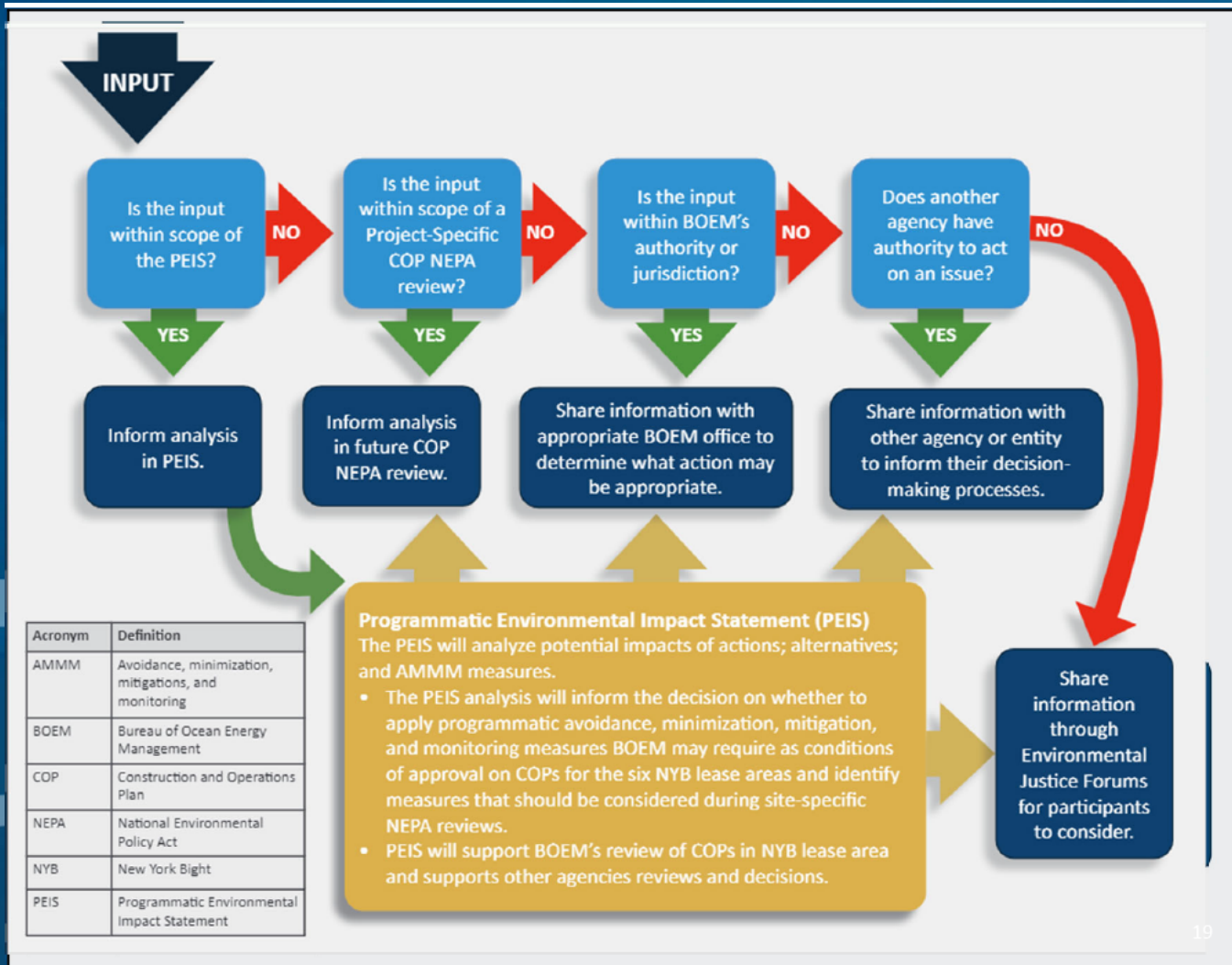
Input Status Report Discussion

Roundtable Activity: Identifying potential regional impacts and affected areas

Participants were asked about potential impacts from lease development activity. Potential impacts identified fell into following general categories:

- Air quality
- Commercial fishing
- Equitable energy distribution
- Impacts to port communities
- Inclusivity of local communities
- Increased emissions
- Labor and workforce
- Recreational fishing and boating
- Visual





Acronym	Definition
AMMM	Avoidance, minimization, mitigations, and monitoring
BOEM	Bureau of Ocean Energy Management
COP	Construction and Operations Plan
NEPA	National Environmental Policy Act
NYB	New York Bight
PEIS	Programmatic Environmental Impact Statement

Programmatic Environmental Impact Statement (PEIS)
 The PEIS will analyze potential impacts of actions; alternatives; and AMMM measures.

- The PEIS analysis will inform the decision on whether to apply programmatic avoidance, minimization, mitigation, and monitoring measures BOEM may require as conditions of approval on COPs for the six NYB lease areas and identify measures that should be considered during site-specific NEPA reviews.
- PEIS will support BOEM's review of COPs in NYB lease area and supports other agencies reviews and decisions.

Review Input Status Report Snapshot



BOEM New York/New Jersey Environmental Justice Roundtable and Forum Input Progress Report for New York Bight Programmatic Environmental Impact Statement

Introduction

BOEM is preparing a Programmatic Environmental Impact Statement (PEIS) for offshore wind development in the New York Bight lease areas. To support the PEIS and to inform decision making on offshore wind planning and development in the New York / New Jersey area, BOEM hosted an Environmental Justice (EJ) Roundtable Convening on Offshore Wind in the New York / New Jersey Region on July 21, 2022. Following the Roundtable, BOEM established a series of quarterly forum meetings to continue engagement on environmental justice issues.

At the Roundtable, BOEM heard from federal and state partners and community-based organizations who serve or work with environmental justice and underserved communities. Participants shared ideas on potential issues and impacts that may affect environmental justice and underserved communities from offshore wind energy development in the New York / New Jersey area.

Much of information provided in the Environmental Justice Roundtable Convening and Forums will inform the New York Bight PEIS. Other information and concerns shared through the series will likely be applicable to BOEM's reviews of Construction and Operations Plans submitted by lessees, and some information will likely be of interest to other federal and state partners.

Purpose

This Input-Action Report is intended to communicate to EJ Roundtable and Forum participants how information they share with BOEM is incorporated into decision-making processes. This initial status report reflects information on potential environmental justice impacts identified during the July 2022 New York / New Jersey Environmental Justice Roundtable Convening. Subsequent status reports will include additional information provided at quarterly forums.

Information Flow Process

It is BOEM's intent that all input shared in the New York / New Jersey EJ Roundtable and Forums be shared with appropriate entities, provided the issues are under BOEM's jurisdiction and authority or are addressed in BOEM's National Environmental Policy Act (NEPA) documents. In the context of incorporating information into the New York Bight PEIS, BOEM considers whether the input or issue is within the scope of the PEIS. That is, relevant to environment and human setting of the New York Bight or to potential impacts (a) relevant analysis. The input may be more applicable to address when reviewing project-specific Construction and Operations Plans. BOEM also considers whether it has authority to address an issue or whether another entity such as another federal or state agency can address an issue under its mission and authority. Additionally, some of the information shared in the EJ



Roundtable and Forums may be informative to lessees or to community-based organizations and other organizations working on environmental justice issues.

BOEM considers a number of questions to process input provided through the EJ Roundtable and Forums, as shown in Figure 1.

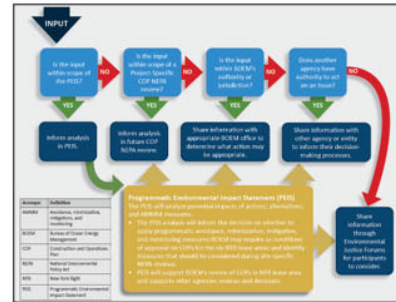


Figure 1: Information Flow Process for Input Provided for the New York Bight PEIS

Input and Progress [EJ](#) July 2022 Environmental Justice Roundtable

Input

During the Roundtable event, participants were asked to provide input on additional potential impacts because of the New York Bight wind energy development leasing process. Participants provided input in a virtual whiteboard brainstorming exercise (Miro board, Figure 2). The potential impacts identified fall into the following general categories:

- Air quality
- Commercial fishing
- Equitable energy distribution
- Impacts to port communities
- Inclusivity of local communities



- Increased emissions
- Labor and workforce, and equity in contracting
- Recreational fishing and boating
- Visual impacts



Figure 2: Miro Board Ideas Shared at July 21, 2022 EJ Roundtable

Input Tracking and Status

BOEM has shared the above issues, including the Miro board, with the New York Bight PEIS team and is currently working through addressing many of the concepts. The following table indicates progress and status of BOEM's processing of the issues identified above during the July 21, 2022 EJ Roundtable. BOEM will update status of these issues and additional input and issues from each EJ Forum throughout the development of the PEIS.

Issue	Progress	Reasoning	Status
Impacts of emissions on air quality	BOEM is analyzing impacts to EJ communities from emissions in the PEIS, relying on analysis of overall air-quality impacts	Applicable to the PEIS	Draft PEIS in progress
Impacts on commercial fishing communities from effects on commercial fishing	BOEM is: <ul style="list-style-type: none"> • analyzing impacts on commercial fishing, and • exploring data sources and methods to analyze impacts on fishing communities in the PEIS 	Applicable to the PEIS	Draft PEIS in progress



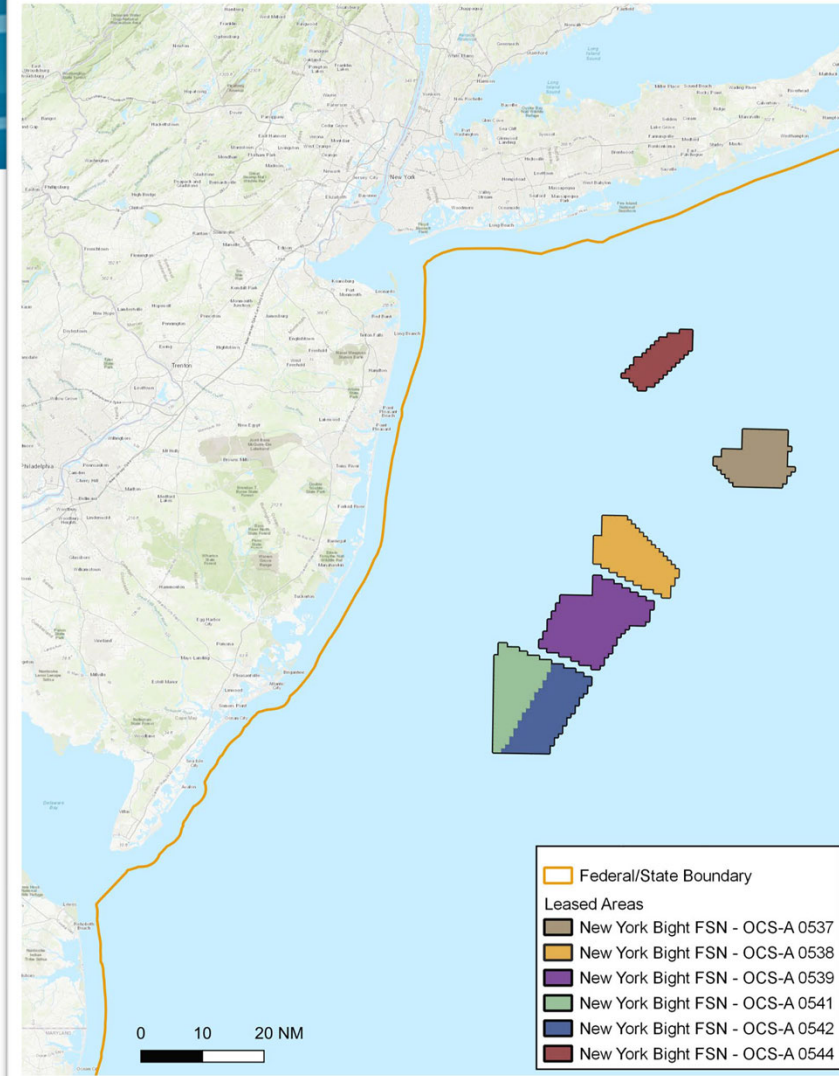
Issue	Progress	Reasoning	Status
Equitable energy distribution	BOEM will explore other partners and agencies with responsibilities or program areas that address energy distribution and will share the findings at a future W/NJ EEF.	Applicable to other state and federal partners, outside of BOEM's jurisdiction.	Exploring
Impacts to port communities	BOEM is analyzing impacts to communities near ports in the PEIS. Findings from PEIS that are relevant to other federal and state permitting agencies will be shared as applicable.	Applicable to PEIS Applicable to other agencies	PEIS draft in progress Exploring information sharing
Inclusivity of local communities	BOEM is exploring and seeking collaboration on methods to increase engagement for future public comment periods.	Applicable to all	Continual
Labor and workforce, equity in contracting	<ul style="list-style-type: none"> • BOEM is analyzing economic impacts, including employment, PEIS. • BOEM will share concerns about contracting equity and workforce development with other entities, including witnesses. 	Applicable to PEIS Applicable to other agencies and lessees	Draft PEIS in progress Exploring information sharing
Recreational fishing and boating	BOEM is analyzing impacts to recreational fishing and boating in the PEIS.	Applicable to PEIS	Draft PEIS in progress
Visual impacts	BOEM will consider visual impacts in the PEIS.	Applicable to PEIS	Draft PEIS in progress

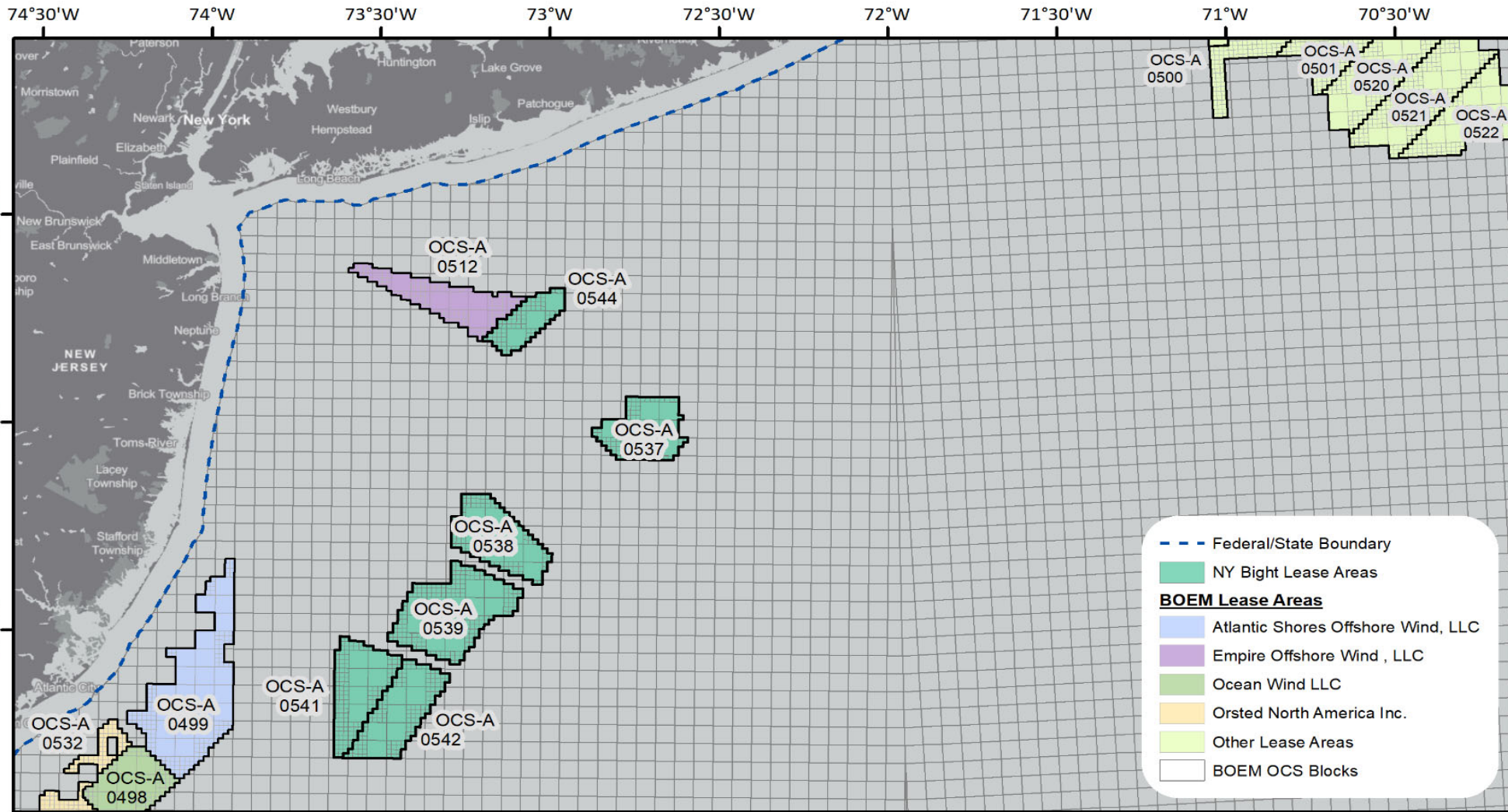


Programmatic Environmental Impact Statement Discussion

New York/New Jersey Lease Areas

- BOEM is drafting a Programmatic Environmental Impact Statement (PEIS) for the New York Bight lease areas.
- 6 lease areas:
 - OCS-A-0537 - OW Ocean Winds East, LLC (Blue Point)
 - OCS-A-0538 - Attentive Energy LLC
 - OCS-A-0539 - Bight Wind Holdings, LLC (Community Offshore Wind)
 - OCS-A-0541 - Atlantic Shores Offshore Wind Bight, LLC
 - OCS-A-0542 - Invenergy Wind Offshore LLC
 - OCS-A-0544 - Vineyard Mid-Atlantic LLC



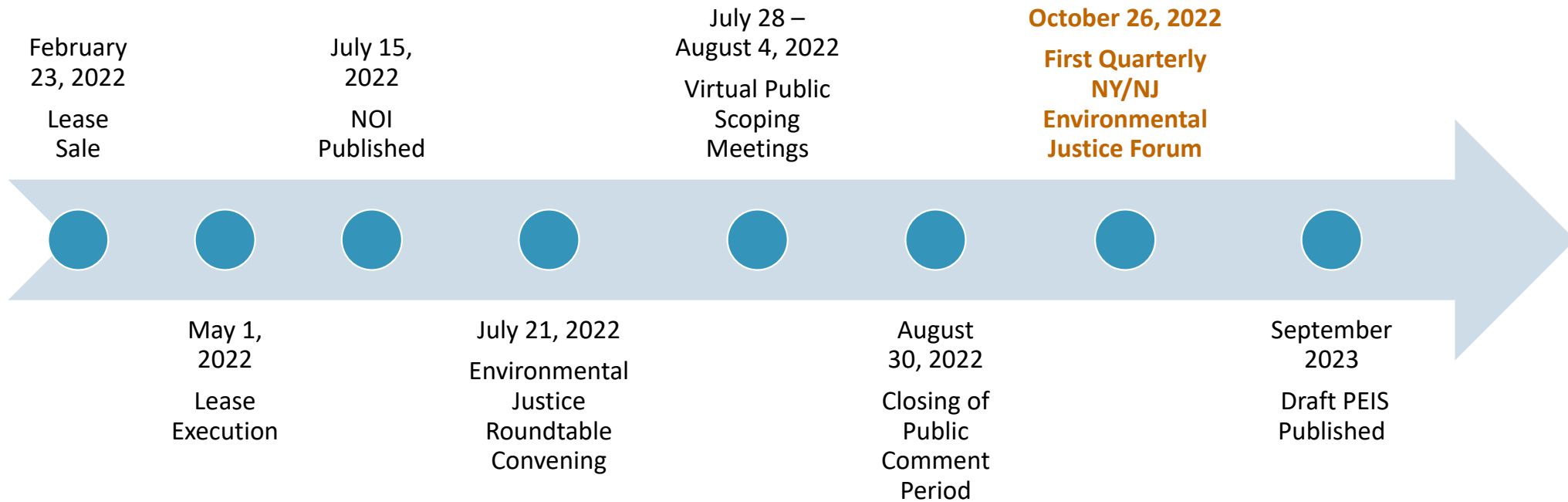


- Federal/State Boundary
- NY Bight Lease Areas
- BOEM Lease Areas**
- Atlantic Shores Offshore Wind, LLC
- Empire Offshore Wind, LLC
- Ocean Wind LLC
- Orsted North America Inc.
- Other Lease Areas
- BOEM OCS Blocks

OREP-2021-1049



New York/New Jersey Lease Area Timeline



Objectives of the NY Bight PEIS



Analyze regional affected environment and environmental consequences



Conduct a focused, regional cumulative analysis



Establish a framework for tiering of project-specific environmental analyses



Identify, analyze, and adopt (if appropriate) programmatic avoidance, minimization, mitigation, and monitoring measures



Provide predictability and consistency to cooperating agencies, partners, and developers



Tiering Approach

New York Bight Programmatic EIS (Tier 1)

- Overall **regional analysis** of potential impacts of a representative project
- Identify, analyze, and adopt, where appropriate, programmatic avoidance, minimization, mitigation, and monitoring measures
- Robust cumulative analysis



COP-specific NEPA (Tier 2)

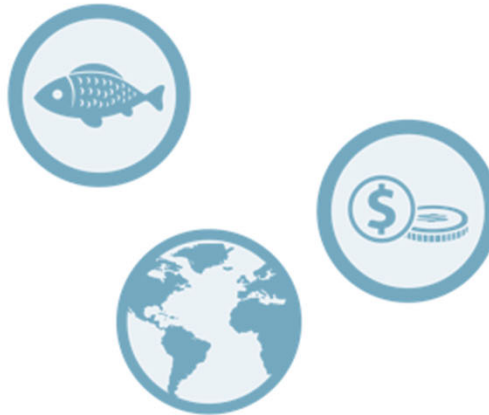
- Incorporate the analysis done in the Programmatic EIS by reference where applicable
- Focus **on site-specific impacts** of approving a particular COP
- Additional avoidance, minimization, mitigation, and monitoring measures
- Approve, approve with modifications, or disapprove the COP



Environmental and Socioeconomic Resources Analyzed in PEIS

Biological

- Avian and Bat Species
- Benthic Resources
- Coastal Habitat and Fauna
- Finfish, Invertebrates and Essential Fish Habitat (EFH)
- Marine Mammals
- Sea Turtles
- Wetlands and Other Waters of the U.S.



Physical

- Air Quality
- Water Quality

Socioeconomic

- Commercial and For-Hire Recreational Fishing
- Cultural Resources
- Demographics, Employment, and Economics
- Environmental Justice
- Land Use and Coastal Infrastructure
- Navigation and Vessel Traffic
- Recreation and Tourism
- Other Uses
- Scenic and Visual Resources



Potential Impacts to EJ Communities

Potential public health and safety impacts

- e.g., air quality, noise, lighting

Changes in the local economy

- e.g., tourism

Impacts to jobs and income

- e.g., revenue effects

Changes in spatial access

- e.g., land use, access to places of historical/cultural significance

Changes in resource access

- e.g., fishing living and non-living resources, subsistence

Note:
These are
preliminary



Breakout Room Discussions

Breakout Room Discussion Prompts – Part One

Discuss **local and regional issues** and information relevant to environmental justice populations in New York and New Jersey to inform how the PEIS approaches **community identification and characterization**.

For example:

- What are important coastal areas to you or the communities you serve?
- What are existing environmental stressors in your area?
- What are suggestions for localized data sources?
- What communities do you know are underserved?



Breakout Room Discussion Prompts – Part Two

Discuss **potential impacts** of offshore wind activities, including **both benefits and burdens** to environmental justice populations. For example:

- Would **space-use conflicts** in nearshore or offshore areas impact members of environmental justice or underserved communities? If so, how?
- What about impacts to **coastal viewsheds**?
- What about impacts from **onshore infrastructure** (e.g., cable emplacement and substations)?
- What about impacts from **increased activity at ports**?
- What about impacts to **health and/or safety**?



EJF Engagement, Coordination, and Process Check-in

Process Considerations for Discussion

Are there any suggested modifications ahead of the next Forum (Wednesday, January 25, 2022, from 10:30 a.m. - 12:30 p.m. ET)?

Consider the following:

1. Time to review and provide input on the materials
2. The format of the Forum
3. Pre- and post-Forum activities and material dissemination
4. Meeting the intention of the Forum and stated goals
5. Agenda topics for future Forums and parking lot items
6. Other items?



Are there communities we should be aware of, and do you know of any organizations we should be contacting?

Have you visited BOEM's virtual meeting room for the New York Bight Programmatic EIS? Have you seen the EJ fact sheet? Did it address things of concern to you or provide info that you find valuable?

Yes, I've visited the virtual meeting room and have seen the EJ fact sheet, and think they meet information needs.

Yes, I've visited, but recommend major changes to meet information needs.

No, I don't know where to find these, but would like to see them.

No, I'm not interested in seeing them.

I'm not sure.

Are there items you would like to have discussed today that we didn't?

Was this meeting a good use of your time? Do you feel like your input was heard?

Yes.

No.

Somewhat.

Contact Information

For further input and discussion: environmental.justice@boem.gov

Atlantic offshore wind environmental justice engagement team:

Holly Fowler | Program Analyst

Holly.Fowler@boem.gov

Laura Mansfield | Social Scientist

Laura.Mansfield@boem.gov

Sara Parkison | Engagement Advisor for Underserved Communities

Sara.Parkison@boem.gov



Thank you!

BOEM

Bureau of Ocean Energy
Management

BOEM.gov



Holly Fowler | holly.fowler@boem.gov

Laura Mansfield | laura.mansfield@boem.gov

Sara Parkison | sara.parkison@boem.gov