



**BUREAU OF OCEAN ENERGY MANAGEMENT (BOEM)
NEW YORK AND NEW JERSEY ENVIRONMENTAL JUSTICE FORUM
MEETING SUMMARY**

**WEDNESDAY, OCTOBER 26, 2022
10:30 A.M. – 12:30 P.M. ET
VIRTUAL MEETING**

This document summarizes the discussion and key themes heard at the October 26, 2022, Environmental Justice Forum (EJF), hosted by the Bureau of Ocean Energy Management (BOEM). The goal of the EJF series is to create space for BOEM, community organizations, federal agencies, and state agencies to discuss potential impacts from offshore wind development on environmental justice and underserved communities. This document is organized as follows:

Contents

- 1. Meeting Participants 2
- 2. Bulletin Board Announcements 4
- 3. Discussion Highlights 7
 - a. Agenda Review, Introductions, and Welcome 7
 - b. Discussion of Environmental Justice Forum (EJF) Guidelines 7
 - d. Programmatic Environmental Impact Statement 11
 - e. Breakout Rooms 12
 - f. Key Themes Across Breakout Sessions 17
- 4. Process Improvements and Next Steps 18
 - a. Coordination, Engagement, and Process Improvements 18
 - b. Summary and Next Steps 18
 - c. Follow Up 19
- Appendix 1: Breakout Room Participants 20
- Appendix 2: EJF PowerPoint Presentation 22



1. Meeting Participants

BOEM Presenters

Meghan Cornelison	Sociocultural Specialist	Meghan.cornelison@boem.gov
Paige Foley	Environmental Protection Specialist	Paige.foley@boem.gov
Holly Fowler	Program Analyst	Holly.fowler@boem.gov
Laura Mansfield	Social Scientist	Laura.mansfield@boem.gov
Sara Parkison	Engagement Advisor	Sara.parkison@boem.gov

Additional BOEM Attendees

Amanda Lefton	Director
Walter Cruickshank	Deputy Director
Sindey Chaky	Senior Social Scientist
Annette Ehrhorn	Renewable Energy Program Specialist
Luke Feinberg	Project Coordinator
Sergio Garcia Mejia	Ocean Energy Environmental Science & Policy Fellow
Jennifer Kenyon	International Relations and Policy Fellow
Marissa Knodel	Senior Advisor
Gary Petrazzuolo	Contractor to BOEM, Avanti Corporation
Lynn Petrazzuolo	Contractor to BOEM, Avanti Corporation
Dustin Reuther	Social Scientist
Blossom Robinson	Communications Specialist
Amy Shanahan	Archaeologist

Kearns & West Facilitation Team

Collin Buchanan, Caisey Hoffman, Colin Johnson, Morgan Lommele, Briana Moseley, Leigh Osterhus, Mark Anthony Sebarrotin, Hannah Silverfine

Community Organizations

Daniel Chu	NYC Environmental Justice Alliance
Adrienne Esposito	Citizens Campaign for the Environment
Kim Gaddy	South Ward Environmental Alliance
Gwen Gallagher	New York Sea Grant
Paula García	Union of Concerned Scientists
Garry Johnson	NAACP New York Conference
Lovinia Reynolds	UPROSE
Alex Rodriguez	Save the Sound
Elizabeth Semple	The Nature Conservancy
Marcus Sibley	National Wildlife Federation
Jesse Solomon	Southwest Brooklyn Industrial Development Corp.
Esther Sosa	Sunset Park Task Force
Bryon White	NYC EBI
Jack Ventura	Pace Energy and Climate Center

Federal Agencies

Jordan Creed	Bureau of Safety and Environmental Enforcement (BSEE)
Bob DeLay	U.S. Environmental Protection Agency (EPA)
Darlene Finch	NOAA Office for Coastal Management
Alan Finio	U.S. Maritime Administration (MARAD)
Jill Head	BSEE



Claire Hodson
David Kluesner
Mary Krueger
Candace Nachman
Anne Schaffer
Angela Silva
Matt Cutler
Ramona Sanders
Rin Ball
Naomi Handell

University of Rhode Island Coastal Resources Center
EPA
National Park Service
U.S. Coast Guard
EPA Region 2
National Northeast Fisheries Science Center
NOAA Fisheries
BSEE
Department of Energy
USACE

State Agencies

Jen Becker
Jessica Dealy
Lorena Garcia
Tyler Hepner
Jordan Koster
Laura McLean

New Jersey Economic Development Authority (NJEDA)
New York State Energy Research and Development Authority
NJEDA
New York State Department of Environmental Conservation
New York State Department of State (NYS DOS)
NYS DOS

Lessees (Observers)

Ellie Evans
Favio German
Joshua Gomez
Oriana Holmes-Price
Kori Ktona
Nathaniel Mayo
Katherine Miller
Natalie Terhaar

EDR
Attentive Energy
Atlantic Shores Offshore Wind
Attentive Energy
Ocean Winds
Vineyard Offshore
RWE Renewables
Community Offshore Wind

2. Bulletin Board Announcements

Save the Sound intends to host a regional forum in the New York City area.

- The date, time, and specific location are to be determined.
- Save the Sound is currently conducting an environmental justice needs assessment. They noted the possible alignment between participants on this call and co-conveners of the upcoming forum.
- **Point of contact:** Alex Rodriguez; alexrodriguez@savethesound.org.

USACE would like to share information about the PA & NY USACE district public notice pages.

- **For more information** on how to sign up for notices about Army Corps activities and receive notifications about projects and reminders of when and how to provide comments during comment periods, visit:
 - <https://www.nap.usace.army.mil/Missions/Regulatory/Public-Notices/>
 - <https://www.nan.usace.army.mil/Missions/Regulatory/Forms-and-Documents/>

The New York State Energy Research and Development Authority (NYSERDA) is hosting a two-hour environmental justice introductory forum on offshore wind for developers.

- Forum will be held on **November 17**. NYSERDA confirmed the participating developers and is sending out invitations to environmental justice organizations.
- The purpose of the forum is to facilitate introductions and connections between developers and communities, and to address stakeholder fatigue. The structure of the event will include introductions from the external affairs leads from developers, then switch to environmental justice introductions.
- **For more information** read about NYSERDA's Workforce Development RFP:
 - <https://www.nyserda.ny.gov/All-Programs/Clean-Energy-Workforce-Development-and-Training/New-York-State-Offshore-Wind-Training-Institute-Workforce-Training-and-Skills-Development>
- **Point of Contact:** Jessica Dealy; jessica.dealy@nyserda.ny.gov

The National Wildlife Federation (NWF) developed a guide to equitable access for environmental justice communities, free to download.

- NWF noted that different organizations often look for input but use outdated engagement methods. The organization wants to ensure that residents know what to demand, and the government knows how to effectively get information from communities. The guide will hopefully be published by the end of the year.
- **Point of Contact:** Marcus Sibley; sibleym@nwf.org.

Attentive Energy conducted a survey of nonprofits in New York to assess the barriers to entry for the offshore wind supply chain and compile funding opportunities.

- The survey data will be shared with the public. If participants are part of small businesses, they are encouraged to take the survey and help industry understand how to be more inclusive.
- **For more information,** visit: <https://www.businesssurveygrants.com/>.

The New Jersey Economic Development Authority (NJEDA) will soon open applications for offshore wind workforce development programs.

- NJEDA’s goal is to expand training, and significant award funding is available. The prerequisite for all awards is to have a New Jersey community-based organization serving underserved/overburdened communities as part of the project team.
- **For more information**, visit: <https://www.njeda.com/offshore-wind-workforce-and-skills-development-grant-challenge>

The U.S. Environmental Protection Agency (EPA) has announced Inflation Reduction Act (IRA) Clean Ports Funding Listening Sessions.

- The IRA provides EPA with \$3 billion to fund zero-emission port equipment and technology and to help ports develop climate action plans to reduce air pollutants at U.S. ports.* This new funding program will build on EPA’s Ports Initiative that the Agency established to ensure that our nation’s ports, a critical part of our infrastructure and supply chain, help address public health and environmental impacts on surrounding communities.
- The first listening session was on November 9, 2022. The second will be on December 6, 2022, 1:00-3:00 PM ET - [Register here](#)
- The sessions will begin with a brief overview of the legislation and conclude with an interactive listening session. We encourage all to attend, whether you work at a port, work with near-port communities, or simply are interested in helping ports transition to zero-emissions. Please come prepared to share your feedback on the program, including:
 - What types of zero-emission port technologies or related planning support do you see as most critical for delivering emissions reductions?
 - What do you see as the biggest hurdles to transitioning to zero-emission port equipment?
 - How do you see this program complementing other available funding programs (e.g., at EPA, other federal or state programs) that can support efforts to reduce emissions at ports?
 - How would you like to see funding for zero-emission port technology, related planning and permitting, and development of climate action plans work together? Should the funding opportunities be sequenced or combined?
 - How can we help ensure this program addresses concerns of near-port communities and advances environmental justice?
- Spanish interpretation and live captioning will be available. If you require special accommodations, including live interpretation into a language other than English or Spanish, please contact cleanports@epa.gov one week prior to the event to make arrangements.
- More information about the IRA Clean Ports funding listening sessions can be found on the [EPA Ports Initiative website](#).

U.S. EPA National Environmental Justice Community Engagement Call: December 13, 2022

EPA invites Environmental Justice (EJ) advocates to participate in the next National Environmental Justice Community Engagement Call taking place on December 13, 2022 from 2 p.m. to 4 p.m. (Eastern Time). These calls are free and open to the public. Register [here](#).

Agenda:

- EPA OEJECR Leadership Updates

- OECA National Compliance Initiatives Update (2023-2026)
- Enforcement and Compliance History Online (ECHO) Community Data Update

The purpose of these calls is to inform the community and other stakeholders about EPA's EJ work and enhance opportunities to maintain an open dialogue with EJ advocates. Please email farrell.ericka@epa.gov by December 8, 2022 to request reasonable accommodation for a disability or interpreter services in a language other than English, so that you can participate in the call and/or to request a translation of any of the event documents into a language other than English.

Recordings and meeting materials for all calls are posted here:
<https://www.epa.gov/environmentaljustice/national-environmental-justice-community-engagement-calls>.

3. Discussion Highlights

a. Agenda Review, Introductions, and Welcome

The meeting facilitator welcomed participants to the EJF and expressed gratitude for their attendance. This first EJF is designed based on input from a series of environmental justice convenings held in the Summer of 2022.

The facilitator reviewed the agenda, highlighting BOEM's intention for the meeting to be a two-way information exchange, with an openness to input and direction from participants. The facilitator highlighted the following, related to specific agenda items:

- The draft guidelines will be introduced as awareness of how to engage in the EJF.
- The input status report is how BOEM processed information from the summer convenings.
- Today's discussion will focus on the implications of the New York Bight (NYB) Programmatic Environmental Impact Statement (PEIS) to environmental justice and underserved communities.

The objectives for the meeting were to:

- Identify priorities, needs, and issues to address through BOEM's draft NYB PEIS specific to environmental justice and underserved communities.
- Develop a shared understanding of challenges affecting and efforts to engage environmental justice populations and underserved communities on offshore wind issues across New York and New Jersey.
- Provide updates on how BOEM is processing previous input for consideration in BOEM's decision making processes so far and invite feedback to continue refining next steps.

The facilitator reiterated that BOEM is interested in and open to feedback on the agenda, the meeting objectives, the meeting format, and ideas on how to advance the values of two-way engagement.

BOEM staff introduced themselves on video while participants introduced themselves in the chat. Participants were invited to share upcoming events and activities with meeting participants, the result of which were detailed in Section 2.

b. Discussion of Environmental Justice Forum (EJF) Guidelines

BOEM staff prefaced the discussion with a summary of feedback from the July 2022 Roundtable Convening, to provide context for how the forum was initiated.

BOEM developed the EJF and other action steps based on the input from Roundtable. At the Roundtable, BOEM solicited feedback on the PEIS analysis and how to engage communities in the NY/NJ region. BOEM proposed two formats, one partner-led connected to existing efforts, and the other led by BOEM but designed collaboratively with partners.

Key themes from the Roundtable include input that:

- Current engagement efforts are not sufficient.
- Partner voices alone are not sufficient.
- Responsible agencies need to be held accountable to community members.
- BOEM and community members/organizations should jointly design two-way dialogue.
- People will make time to participate when they feel like their feedback is being received and implemented.

Roundtable Participant Engagement Preferences

Roundtable NY/NJ Engagement Strategy Discussion Results

Poll Question: Do you or your agency/organization have a dedicated, long-term capacity to participate in a regularly held, BOEM-led engagement meeting?

- **Yes, high priority: 43%**
- Maybe, not enough information: 23%
- Yes, but not long-term: 17%
- Occasionally, but low priority: 10%
- Not yet: 7%
- No, not a priority: 0%

Poll Question: How frequently would BOEM-led meetings need to be held?

- **Quarterly: 52%**
- Bi-monthly: 19%
- Monthly: 11%
- Other: 11%
- Bi-annually: 7%

Poll Question: Would coordinating lessee engagement through regular BOEM meetings be preferred?

- **Maybe with conditions: 50%**
- Yes, it would be preferred: 25%
- Not enough information: 15%
- No, BOEM-led meetings are not preferred for lessee engagement: 10%

Poll Question: How would you prefer to be engaged?

- **BOEM-led: 37%**
- Another format option: 32%
- Partner-led: 21%
- No preference/unsure: 11%
- No meeting, status quo (public process): 0%



The draft guidelines for engagement build from these comments and priorities. BOEM recognized that this is the first time that many participants have seen this information, and that this is just the start of an ongoing discussion. **Feedback is welcome, both individually to the BOEM team and during future EJFs.**

The facilitator shared the draft guidelines with participants. The guidelines are intended to answer the question “What does it mean to participate in this forum?” The guidelines do not commit participants to joining every meeting, but rather seek to ensure that participants have equitable opportunity to participate. The facilitator reviewed the major sections of the guidelines:

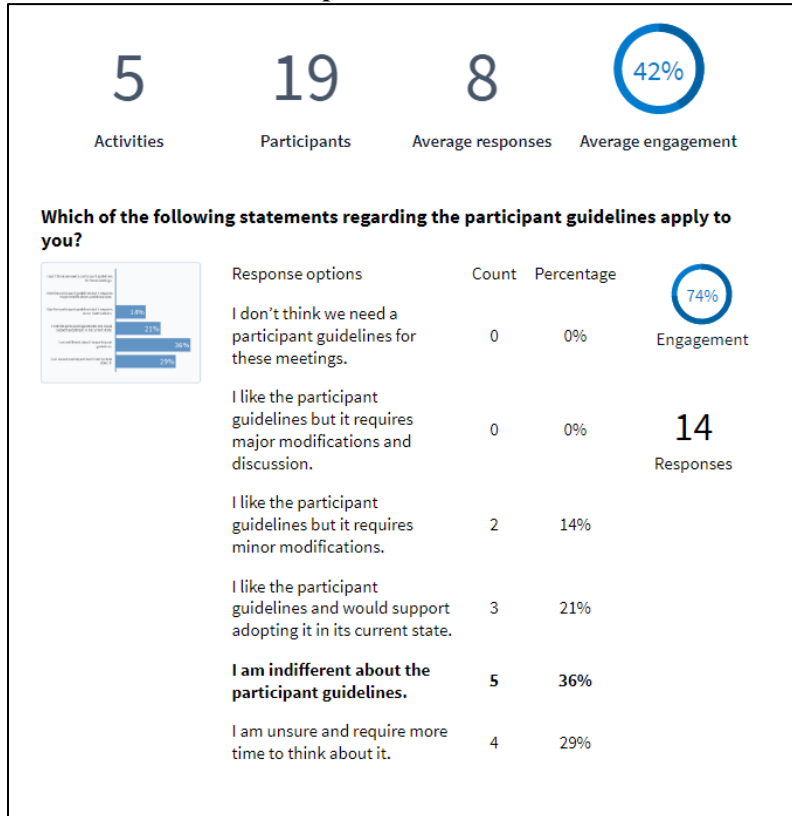
- Overview
- Goals of Forum
- Charge and Responsibilities
- Participation
- Process Logistics
- Point of Contact

The facilitator invited participants to share reactions and asked if there was anything that would prevent them from sharing openly.

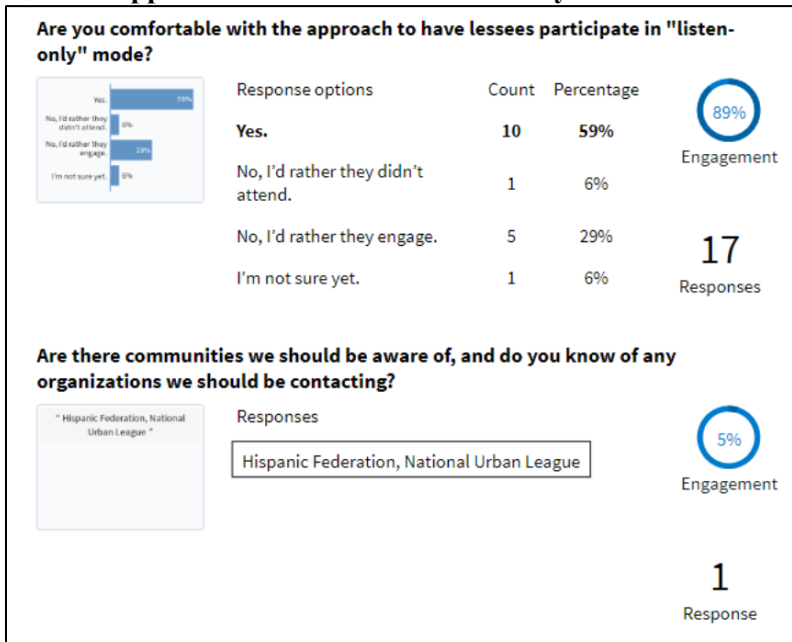
- **Community organization member** responded no.

Two polls were shared to assess whether the guidelines were relevant and helpful.

Participant Guidelines Poll



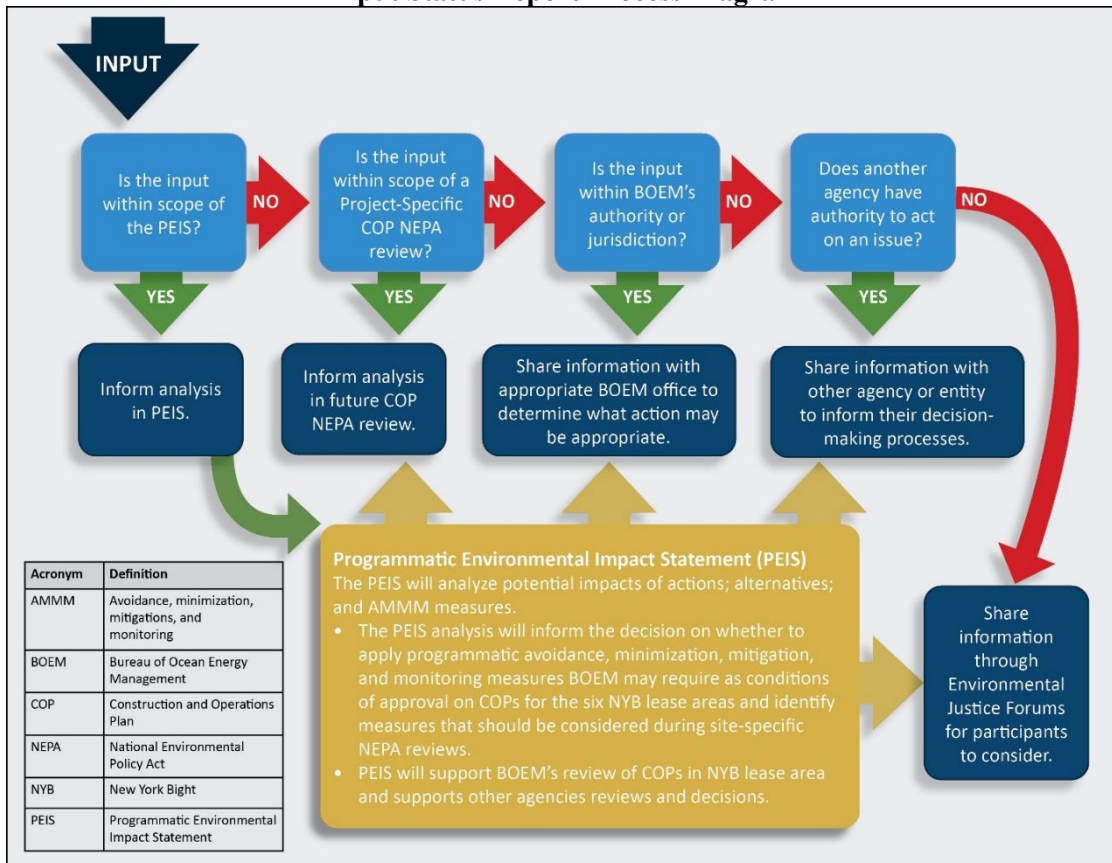
Approach for Lessees in Listen-Only Mode Poll



c. Discussion of Input Status Report

BOEM staff shared that the Input Status Report intends to show a clear feedback loop and show how information received by communities and participants during the summer meeting series is processed and adopted by BOEM.

Input Status Report Process Diagram



Meghan shared an example of how BOEM would “process” input on the impacts on air quality and health for nearby communities.

- Air quality impacts, such as emissions from offshore wind vehicles, are within the scope of the PEIS.
- BOEM would analyze the impact both on traditional air quality and specifically on environmental justice communities.
- For input outside of BOEM’s jurisdiction, such as energy distribution, BOEM would explore the concept with other agencies with thematic program areas.
- BOEM is committed to ensuring that all information has a dedicated follow up path and will bring up any remaining topics through the EJFs to ensure that the broader audience has all the input available.

The Input Status Report will show the issue, progress, reasoning, and status of a topic. BOEM’s goal is to close the loop and provide transparency on how input is integrated. In future meetings, the Input Status Report will be shared in advance of the meeting, but BOEM wanted to avoid overwhelming participants



with content for the first EJF. This is one effort to track the feedback BOEM hears, and BOEM is open to modifications to the format.

The facilitator asked:

- What are your thoughts on this approach?
- Is it helpful?
- Do you have suggestions for modifications?
- Should we spend more or less time on this at future meetings?

Group Discussion

- **Federal agency member:** While the input provided during the Roundtable Convening considered offshore windfarm impacts, there was nothing listed in the brainstorm “sticky notes” about onshore cable routes. What will be dug up, how long the cables will be, and how this would impact wetlands, should all be included in the considerations.
 - **Community organization member** indicated agreement in the chat.
 - **BOEM staff** expressed appreciation for the comments and indicated that BOEM is interested in feedback to ensure that the agency is accurately interpreting input.
- **Federal agency member:** The status report seems useful. There is also a need for participants to open items in the report for discussion, either because the text is not clear or because the topic merits further discussion.
- **BOEM staff:** BOEM’s jurisdiction along the Atlantic Coast is three miles offshore on the Outer Continental Shelf. BOEM is currently focused on its direct jurisdiction but pays attention to requests for BOEM to act as conveners for the topics that are outside of their jurisdiction and bring in the right agencies.
 - The facilitator emphasized that this is part of why state and federal agencies are participants today, to make connections across jurisdictions.
- **Community organization member:** Could BOEM create a similar space for lessees to share their specific plans? The community could be in listen-only mode to observe processes. BOEM is the only entity that could hold that kind of space.
 - The facilitator emphasized the need for sharing information about lease stipulations and creating space for learning for communities.
 - **BOEM staff** shared that this could be an agenda item for a future EJF. BOEM staff emphasized that input on potential future agenda items like this is always welcome and, that there will be an additional opportunity to provide suggestions during the “process considerations” section at the end of the Forum today.

The facilitator asked if there were any major or minor changes, from first glance at the Input Status Report, that participants would like to see. Participants did not provide input but were asked to review it as time allows and provide input to BOEM. BOEM is committed to making sure the documents are helpful.

d. Programmatic Environmental Impact Statement

BOEM staff presented background on the PEIS process and development, and how BOEM reviews input needed for impact analyses.

PEIS Timeline

- The PEIS is being developed for six lease areas.
- BOEM expects to receive six Construction and Operations Plan (COPs), one for each lease area.

- The lease sale was in February 2022 and executed in May 2022.
- The draft PEIS will tentatively be published in the Fall of 2023.

PEIS Objectives

- The PEIS focuses on cumulative analysis, with a regional, comprehensive scale.
- This is different from a COP, which analyzes project specific impacts.
- A PEIS objective is to understand how BOEM can mitigate and reduce impacts across all six lease areas, and how BOEM can support cooperating agencies.
- The PEIS provides for a tiered approach to impact analysis.
 - Tier 1 is focused on regional analysis and mitigation.
 - Tier 2 is COP-specific, with additional review per project.

BOEM is focused on addressing environmental justice concerns early in the process, which is part of today's effort. During the discussion, BOEM wants to hear from participants about what impacts they are thinking about across the lease areas.

e. Breakout Rooms

The facilitator introduced the next portion of the meeting, where the group will be divided into three breakout groups so that there is more time to hear individual perspectives on potential impacts. BOEM is hoping to connect the PEIS with direct impacts that communities raise. Impacts that are not listed in the PEIS become more difficult to mitigate and minimize. BOEM is especially curious about the intersection of coastal activities and resources with environmental justice communities.

Participants were split into three breakout rooms. This summary's appendix provides the list of participants for each breakout room.

Discussion prompts included:

- **Discuss local and regional issues and information for environmental justice populations in New York and New Jersey to inform how the PEIS approaches community identification and characterization.** For example:
 - What are important coastal areas to you or the communities you serve?
 - What are existing environmental stressors in your area?
 - What are suggestions for localized data sources?
 - What communities do you know are underserved?
- **Discuss potential impacts of offshore wind activities, including both benefits and burdens to environmental justice populations.** For example:
 - Would space-use conflicts in nearshore or offshore areas impact members of environmental justice or underserved communities?
 - What types of impacts do you think environmental justice or underserved communities could experience from changes in coastal viewsheds?
 - What types of impacts do you think environmental justice or underserved communities could experience from onshore cable emplacement?
 - What types of impacts do you think environmental justice or underserved communities could experience from increased activity at ports?

Breakout Room 1 Discussion

Community Identification and Characterization

- Key issues and concerns discussed by participants.
- **Community organization member** described Save the Sound’s five sub-programs to increase community resilience from the effects of the climate crisis along the Long Island Sound. Those programs focus on climate change, water quality, ecological restoration, land use, and legal issues.
 - Many of their community members are vulnerable to hurricanes. Flooding caused by hurricanes can lead to vulnerable populations experiencing the additional impact of chemicals entering their home.
 - English is not the primary language of many communities, communities that are particularly vulnerable to climate change, specifically when it comes to receiving official communications, gathering and incorporating community perspectives, and involvement with general environmental procedures.
 - Existing environmental stressors include sewage treatment problems in the towns of Larchmont, NY and New Haven, CT. Mold in public housing units has been reported but left unaddressed.
 - They provided a link New York State’s Map of Disadvantaged Communities: <https://www.nyserda.ny.gov/ny/disadvantaged-communities>.
- **Community organization member** asked how “underserved communities” is defined.
 - **BOEM staff** shared that the reference is from Executive Order 13985: Advancing Racial Equity and Support for Underserved Communities Through the Federal Government. This definition encapsulates several communities that do not have equitable access or are unable to participate fully in civic life due to historical and systemic barriers. It includes minority and low-income populations, disability communities, LGBTQ+ communities, and more.
- **Community organization member** said that they still had questions about how offices and agencies will communicate with one another. They suggested creating a similar space in New England.
 - **Community organization member** mentioned a large environmental justice community in East Boston that is facing a controversial proposal to build a substation. This substation will burden an already overburdened community and is strongly opposed by most community members based on climate concerns, technical flaws, and safety concerns because of the site’s proximity to 8 million gallons of jet fuel. They recognized the need to build infrastructure to distribute the energy collected by offshore wind and emphasized the importance of balancing that with potential harm to communities. They encouraged BOEM to facilitate the responsible deployment and development of these industries to minimize burdens.
 - **BOEM staff** shared that there is no existing parallel engagement process in New England. Director Lefton shared that the New York/New Jersey process is a pilot project, chosen in part because of the opportunity presented by the Programmatic Environmental Impact Statement (PEIS). By attaching engagement to the PEIS, engagement is being done earlier in the NEPA review process and ahead of project-specific reviews following the submission of Construction and Operations Plans (COPs).
 - **Community organization member** emphasized the importance of ensuring that people from environmental justice and low-income communities benefit from the introduction of wind energy, including through job creation.
 - **Community organization member** asked how BOEM is including small businesses so that benefits from wind energy are not only accessible to large well-known companies.

- **Community organization member** emphasized ensuring that air quality is not negatively impacted in places that are already struggling with adverse health impacts.

Potential Impacts of Offshore Wind Activities

- **Federal agency member** shared that the Sunset Park neighborhood in Brooklyn is home to the South Brooklyn Marine Terminal, which will host much of the offshore wind staging for New York Bight. Sunset Park is a community of 130,000 people, a community of color, and a disadvantaged community.
 - The community hopes that jobs are made available to Sunset Park residents and that equitable, affordable, and accessible job training both directly and indirectly tied to offshore wind is made available to the community.
 - Job training and workforce development should not follow the example set by the fossil fuel industry, where infrastructure is placed in communities that see none of the benefits.

Potential Impacts from Increased Activity at Ports

- **Federal agency member** shared that maintaining a working waterfront that prioritizes green industry is of critical importance.
 - The current waterfront is a hub for e-commerce storage, contributing to an increase in truck traffic.
 - Prioritizing green manufacturing and the green economy is important, including using electric vehicles to avoid air pollution.
 - Impacts on roads from increased truck traffic and increased dirt kicked up by trucks should be considered.
 - The Brooklyn-Queens Expressway currently brings 150,000 cars and trucks per day through Sunset Park. The community is concerned about increased truck traffic and pollution.

Breakout Room 2 Discussion

Community Identification and Characterization

- **Community organization member** expressed concern about coastal areas that identify as disadvantaged communities, including industrial waterfronts. There is an opportunity for industry to create greener infrastructure. If pollution health is analyzed and infrastructure converted into green infrastructure, then developers can keep industries and jobs in a place where pollution is no longer a burden.
- **Community organization member** inquired whether establishing Community Benefits Agreements (CBAs) is within the PEIS scope. CBAs can disproportionately benefit developers and more can be done for environmental justice communities. More robust discussions could occur if developers came to communities with examples of potential impacts and proposed mitigations. CBAs cannot be developed at the expense of human health.
- **Lessee** shared their personal experience with CBAs and expressed that these agreements could be better enforced.
- **Community organization member** shared that CBAs have a bad history in New York and that the NAACP would like to hear how BOEM is handling the issue.
- **Community organization member** indicated that community-oriented PLAs are also very important.
- **BOEM staff** asked how BOEM can initiate discussions around CBAs/PLAs in the EJF or as part of the PEIS development.

- **Community organization member** expressed that BOEM can initiate conversations with developers. Developers are positioned with relationships, access to permits, and resources to move projects forward without pause for community impacts. Conversations should occur earlier.
- **Community organization member** shared an example of a developer's decision that would impact the community. If a development includes the use of cars, the developer should consider electric vehicles to reduce diesel impacts in the community. This discussion, and others around local jobs, air quality, potential water quality issues, noise disruptions, and others can lead to meaningful impact if conducted early.
- **Community organization member** shared that application and enforcement are weak and need to be strengthened.
- **Community organization member** shared that they are developing resources to help stakeholders understand offshore wind, how to participate locally and federally, and where electricity comes from in NY. They hope to support stakeholders who need science extension resources. They can be reached at: geg59@cornell.edu.

Potential Impacts of Offshore Wind Activities

- **Community organization member** expressed a desire to understand the specifics around proposed time frames, potential jobs, and the duration of these jobs. They relayed community needs for answers. BOEM should create accountability for developers to provide specific information and be transparent.
- **Community organization member** asked for clarity around baseline conditions of traffic density in harbors, environmental conditions, and atmospheric levels, and how to measure potential change due to proposed construction and operation. As offshore wind is embraced, their organization is interested in ensuring that any additional traffic or changes to conditions does not increase carbon output from current vessels.
- **Community organization member** asked for clarification on space-use conflicts and BOEM responded using the example of commercial fishing and offshore wind being two uses of the same space.
 - **Community organization member** expressed that viewsheds are a lower priority relative to death rates from the fossil fuel industry. They stated that emissions from ships and vessels are a concern and that they wanted to ensure that emissions are mitigated, or electric vehicles are considered.
- **Community organization member** indicated that if development does proceed, the fishing community prefers employment over compensatory mitigation.

Breakout Room 3 Discussion

Community Identification and Characterization

- **Federal agency member** stated that ensuring access to the coast and natural areas surrounding it continues to be a challenge for environmental justice communities. Climate change is diminishing the health of natural areas and impacts of climate change on access to coastal areas needs to be limited.
- **Federal agency member** agreed that access to coastal areas and resources is extremely important to the National Park Service. The Land and Water Conservation Fund provides money to local parks to fund recreation activities in perpetuity, meaning that offshore wind activities may come into conflict with supporting these recreation options for communities. For example, an offshore wind company running a power cable through a community park might affect the public's access

to that space. It's important to hear from communities on how they want public land to be used and what they value most in these limited areas.

- **Community organization member** commented that a Tribal representative at a recent American Clean Power conference stated that a neighboring coastal Tribe on Long Island had not been contacted by BOEM regarding development in the New York Bight area. BOEM should determine who is invited to be a part of the environmental justice process and why, and how their feedback is implemented.
 - **Federal agency member** asked BOEM to confirm whether the Shinnecock Nation had been contacted about the EJF.
 - **BOEM staff** responded that BOEM is conducting a separate Tribal engagement and government-to-government consultation process. These consultations are independent of the EJFs.

Potential Impacts of Offshore Wind Activities

- **Federal agency member** commented that subsistence fishing is an activity that could be negatively impacted by offshore wind activities.
- **Community organization member** commented that their organization focuses on local economic development within three communities and represents the interests of manufacturing businesses in Brooklyn.
 - Their community is part of the New York City offshore wind terminal port and is considered an environmental justice community due to its heavy industrial activity and history of pollution.
 - Offshore wind impacts truck traffic through these communities and will result in competition between existing manufacturers in the area and offshore wind companies for limited available space. The environmental impacts of truck traffic on local communities should be analyzed.
- **Federal agency member** commented that environmental justice communities continue to be affected by the legacy of hazardous waste contamination, especially in the New York and New Jersey region, and this impact should be studied.
 - There are increased opportunities for communities to be exposed to environmental hazards due to space constraints.
 - They are interested in reducing exposure for subsistence users or those who live near contaminated lands.

Potential Impacts from Increased Activity at Ports

- **Community organization member** identified analyzing the impacts onshore infrastructure cables needed for offshore wind projects as a priority for communities in southwest Brooklyn and greater New York City. The PEIS should concentrate on what kinds of jobs will be created by offshore wind infrastructure investments, including investments in ports. The “Blue Highway Project” in New York City to increase the use of waterways to move goods could be a possible beneficiary of investments and port development.
- **Federal agency member** commented that federal and state agency members in the breakout room outnumbered community members. Community members might feel uncomfortable sharing their perspective, or desire to shape the topics discussed.

f. Key Themes Across Breakout Sessions

Community Identification and Characterization

- Address existing environmental stressors in environmental justice and underserved communities, such as sewage, mold, and flooding from hurricanes, which could be compounded by impact from development.
- Ensure that environmental justice and low-income communities benefit from wind energy development through job creation. Ensure that jobs are available, and that job training is affordable and accessible.
- Prepare communications in languages that match the language of the populations impacted, considering people with first languages other than English.
- Consider the role BOEM can play as an enforcement for CBAs and PLAs.
- Provide information about existing outreach activities, such Tribal consultation.
- Explore other forms of mitigation for communities beyond compensation mechanisms for losses (e.g., workforce development and employment).
- Consider impacts to the following specific communities:
 - Long Island Sound
 - Larchmont, NY
 - New Haven, CT
 - Sunset Park, Brooklyn, NY
 - Greater New York City Area
 - Legacy environmental justice communities across New York and New Jersey

Potential Impacts of Offshore Wind Activities

- Ensure that coastal access is not constrained, taking into consideration climate change, public use of coastal land, and specific uses such as subsistence fishing.
- Ensure that air quality is not negatively affected, with attention to emissions.
- Promote coordination and communication among federal and state agencies.
- Increase accountability and transparency from developers.

Potential Impacts from Increased Activity at Ports

- Ensure that small businesses benefit from offshore wind activity.
- Promote green industry and green manufacturing at the waterfront, with attention to the impact of the logistics and trucking industries.
- Mitigate air pollution from development-related traffic.
- Consider the legacy of hazardous waste in environmental justice communities.

Continued Discussion

- **Community organization member** emphasized the themes of enforceability and accountability. Developers are perceived to be putting on a show in their engagement activities. Participants hope to convey the importance of the BOEM's role in enforcement.
 - **Director Lefton** thanked the community member for their comments and encouraged state partners to join BOEM in holding developers accountable.
 - **State agency member** agreed with Director Lefton and noted that a NYSERDA stakeholder engagement plan includes requirements that track how projects change based on community input.
 - **BOEM staff** replied that this is the first required engagement plan for New York state communities, and BOEM will ensure coordination with states.

- **Community organization member** noted that communities consider the New York Bight project as an example of responsible offshore wind development. If done well, its positive effects will ripple across the East Coast.
- **Community organization member** added that they are holding BOEM and states accountable in this effort.

4. Process Improvements and Next Steps

a. Coordination, Engagement, and Process Improvements

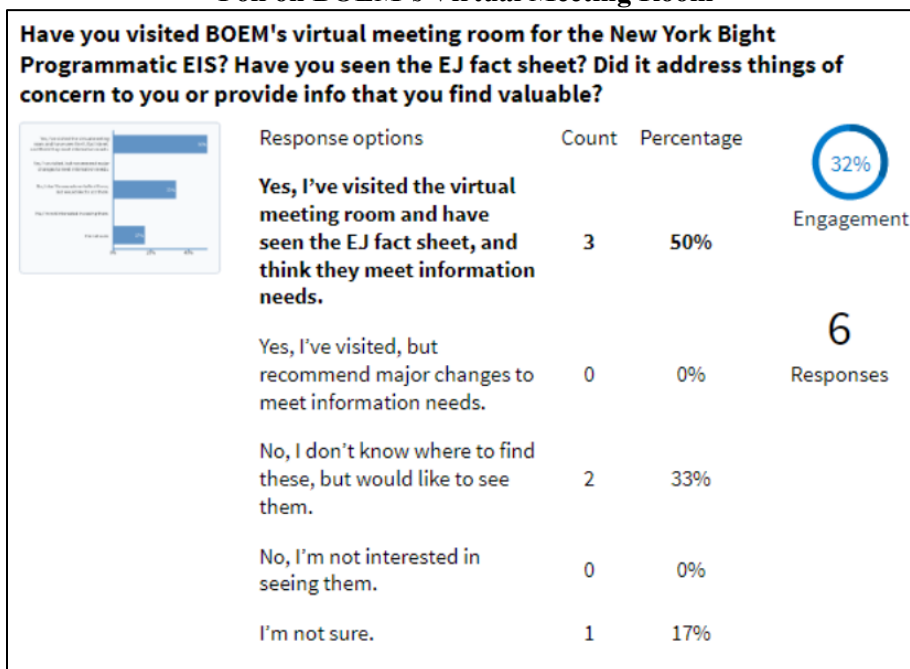
BOEM staff thanked participants for their input and invited participants to share any suggested changes to the next EIJ.

- **Federal agency member** shared a concern that old or spent wind turbine waste could end up dumped in environmental justice communities. A future EIJ topic could be around the circular economy and end of life impacts.
- **Community organization member** shared gratitude and respect for BOEM and other agencies taking the time to hear feedback. They indicated a need to compensate participants. Community members who participate but are not paid by an employer organization for their time must make a sacrifice to engage. There is a need to identify how to fund these events for front- and fence-line communities. Developers could pay for this.
- **Community organization member** suggested that BOEM share the potential future EIJ topics so that communities can prioritize when and how to participate in the EIJs. They requested that materials be sent out as early as possible before each meeting to allow participants to provide better feedback.

b. Summary and Next Steps

Participants were presented two final polls.

Poll on BOEM’s Virtual Meeting Room



Poll on Meeting Themes



c. Follow Up

- To provide advanced notice, BOEM selected a date for the next Environmental Justice Forum: **Wednesday, January 25, 2023, from 10:30 a.m. – 12:30 p.m.** Participants are asked to inform BOEM of any conflicts with this date.
- Participants will receive a formal meeting summary in early November, and invitation to the next EJJ and packet of materials to review for the January 2023 EJJ in December.
- Participants are invited to contact BOEM staff to share additional feedback and input.
- BOEM and the facilitator shared gratitude for participants' time and effort in the EJJ and help design an equitable process going forward.

Appendix 1: Breakout Room Participants

Breakout Room 1

Name	Organization	Category
Paula Garcia	UCS	Community
Lovinia Reynolds	UPROSE	Community
Alex Rodriguez	Save the Sound	Community
Jen Becker	NJEDA	State
Jessica Dealy	NYSERDA	State
Laura McLean	NYSDOS	State
Jordan Creed	BSEE	Federal
Matt Cutler	NOAA Fisheries	Federal
Ramona Sanders	BSEE	Federal
Anne Schaffer	USEPA Region 2	Federal
Oriana Holmes-Price	Attentive Energy	Lessee
Kori Ktona	Ocean Winds	Lessee
Luke Feinberg	BOEM	BOEM
Holly Fowler	BOEM	BOEM
Sergio Garcia Meijia	BOEM	BOEM
Amanda Lefton	BOEM	BOEM
Sara Parkison	BOEM	BOEM

Breakout Room 2

Name	Organization	Category
Daniel Chu	NYC-EJA	Community
Gwen Gallagher	NY Sea Grant	Community
Garry Johnson	NAACP NY State	Community
Marcus Sibley	NWF	Community
Jordan Koster	NYSDOS	State
Rin Ball	DOE	Federal
Bob Delay	EPA	Federal
Jill Head	BSEE	Federal
Candace Nachman	U.S. Coast Guard	Federal
Favio German	Attentive Energy	Lessee
Lynn Petrazzuolo	Avanti Corporation	Lessee
Sindy Chaky	BOEM	BOEM
Walter Cruickshank	BOEM	BOEM
Annette Ehrhorn	BOEM	BOEM
Paige Foley	BOEM	BOEM
Laura Mansfield	BOEM	BOEM
Blossom Robinson	BOEM	BOEM

Breakout Room 3

Name	Organization	Category
Ellie Evans	Environmental Design and Research	Community
Jack Ventura	PECC	Community
Jesse Solomon	Southwest Brooklyn IDC	Community
Esther Sosa	Sunset Park Task Force	Community
Claire Hodson	University of Rhode Island	Community



Tyler Hepner
Darlene Finch
Angela Silva
Mary Krueger
Naomi Handell
Katherine Miller
Nate Mayo
Gary Petrazzuolo
Meghan Cornelison
Dustin Reuther
Marissa Knodel

NYSDEC
NOAA
NOAA
NPS
USACE
RWE
Vineyard
Avanti Corporation
BOEM
BOEM
BOEM

State
Federal
Federal
Federal
Federal
Lessee
Lessee
Contractor
BOEM
BOEM
BOEM



Appendix 2: EJF1 PowerPoint Presentation



BOEM Bureau of
Ocean Energy Management

New York / New Jersey Offshore Wind Environmental Justice Forum

Wednesday, October 26, 2022
10:30 a.m. - 12:30 p.m. ET

Holly Fowler, Laura Mansfield, Sara Parkison, Meghan Cornelison, Paige Foley



BOEM Bureau of
Ocean Energy Management

New York / New Jersey Offshore Wind Environmental Justice Forum

Wednesday, October 26, 2022
10:30 a.m. - 12:30 p.m. ET

Holly Fowler, Laura Mansfield, Sara Parkison, Meghan Cornelison, Paige Foley

Zoom Webinar Instructions – Technical Assistance

- If you encounter technical difficulties during the meeting, please email Caisey Hoffman at choffman@kearnswest.com or message Caisey Hoffman (Co-Host) using Zoom chat.
- If you are participating by phone, raise your hand for help by dialing *9.



Agenda

- Introductions and Agenda Overview
- Community Announcements
- Discuss Forum Participant Guidelines
- Discuss Input Status Report
- Present on the Programmatic Environmental Impact Statement
- Discuss Coordination, Engagement, and Process Improvements
- Next Steps and Adjourn



Proposed Meeting Objectives

- Identify priorities, needs, and issues to address through BOEM's draft New York Bight (NYB) Programmatic Environmental Impact Statement (PEIS) specific to environmental justice and underserved communities.
- Develop a shared understanding of challenges affecting and efforts to engage environmental justice populations and underserved communities on offshore wind issues across New York and New Jersey.
- Provide updates on how BOEM is processing previous input for consideration in BOEM's decision making processes so far and invite feedback to continue refining next steps.



Process Guidelines

- “Honor” the agenda.
- Participate actively and respectfully.
- Use the “raise hand” function to join the discussion queue.
- Facilitator will mind the queue.
- When you speak, provide your name and affiliation.
- Participants are muted when they enter the meeting but can adjust their audio and video functions.
- Lessees are joining the meeting as observers and will be muted throughout the meeting. If you have a question for a lessee, BOEM can facilitate introductions after the meeting.
- Use the “chatbox” function to ask questions, comment, or receive technical assistance.



BOEM Directorate Remarks

BOEM Staff Introductions

Participant Introductions

please insert your name, organization, and affiliation in the chat box



The background features a light blue and white geometric pattern of overlapping squares and rectangles. A single orange sticky note is placed in the center-left area. The text "Participant Bulletin Announcements" is centered horizontally and overlaid on the sticky note and background.

Participant Bulletin Announcements

Bulletin Board Announcements

Space to **share information** on developments and activities **affecting environmental justice and underserved communities** related to offshore wind off the coast of NY & NJ.

Announcements may include:

- Engagement processes underway
- Available opportunities
- Needed information or support



EJF Participant Guidelines Discussion

Roundtable NY/NJ Engagement Strategy Discussion Results

On presentation of engagement format options:

- “The approach depends on the quality and scope of existing meetings, which may be missing key partners and community representatives. This means it is **likely not sufficient to tag onto existing meetings.**”
- “Partner-led efforts are important but if the goal is real movement, **oftentimes partner voices alone are not sufficient** to get things done with developers. A BOEM-led approach gives developers more impetus to follow through.”
- “There are meaningful things that the community has been asking for in various engagement meetings, that developers haven’t followed through on. **Community members need more accountability from responsible agencies (e.g., BOEM, NYSERDA).**”
- “Open lines of communication are critical **to allow two-way dialogue** with BOEM and community leaders.”
- “The formula is that even the busiest **people will make time when they feel like their feedback is being received and implemented** through two-way communication.”



Roundtable NY/NJ Engagement Strategy Discussion Results

Poll Question: Do you or your agency/organization have a dedicated, long-term capacity to participate in a regularly held, BOEM-led engagement meeting?

- **Yes, high priority: 43%**
- Maybe, not enough information: 23%
- Yes, but not long-term: 17%
- Occasionally, but low priority: 10%
- Not yet: 7%
- No, not a priority: 0%

Poll Question: Would coordinating lessee engagement through regular BOEM meetings be preferred?

- **Maybe with conditions: 50%**
- Yes, it would be preferred: 25%
- Not enough information: 15%
- No, BOEM-led meetings are not preferred for lessee engagement: 10%

Poll Question: How frequently would BOEM-led meetings need to be held?

- **Quarterly: 52%**
- Bi-monthly: 19%
- Monthly: 11%
- Other: 11%
- Bi-annually: 7%

Poll Question: How would you prefer to be engaged?

- **BOEM-led: 37%**
- Another format option: 32%
- Partner-led: 21%
- No preference/unsure: 11%
- No meeting, status quo (public process): 0%



Environmental Justice Forum Goals

1. **Identify priorities, needs, and issues** to address through BOEM's draft New York Bight PEIS specific to environmental justice and underserved communities.
2. **Improve information-sharing and coordination** across agencies, governments, lessees, and community-based organizations.
3. **Create greater accountability** by providing transparency to communities on whether and how their input has affected the decision-making process.
4. **Grow long-term relationships** with communities that are founded on mutual respect, understanding, and collaboration.
5. **Reduce barriers to participation**, increase access to environmental reviews, and create better-informed decisions.



Review Draft Participant Guidelines



Poll Everywhere

THREE WAYS TO PARTICIPATE



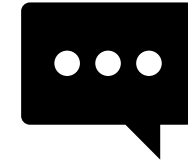
BY COMPUTER

Go to
www.pollev.com/kwpoll2
on your internet browser.



BY SMART PHONE

Go to
www.pollev.com/kwpoll2
on your internet browser.



BY TEXT MESSAGE

Text
kwpoll2 to 22333
on your mobile device



Which of the following statements regarding the participant guidelines apply to you?

I don't think we need a participant guidelines for these meetings. **A**

I like the participant guidelines but it requires major modifications and discussion. **B**

I like the participant guidelines but it requires minor modifications. **C**

I like the participant guidelines and would support adopting it in its current state. **D**

I am indifferent about the participant guidelines. **E**

I am unsure and require more time to think about it. **F**

Are you comfortable with the approach to have lessees participate in "listen-only" mode?

Yes.

No, I'd rather they didn't attend.

No, I'd rather they engage.

I'm not sure yet.

Input Status Report Discussion

Roundtable Activity:

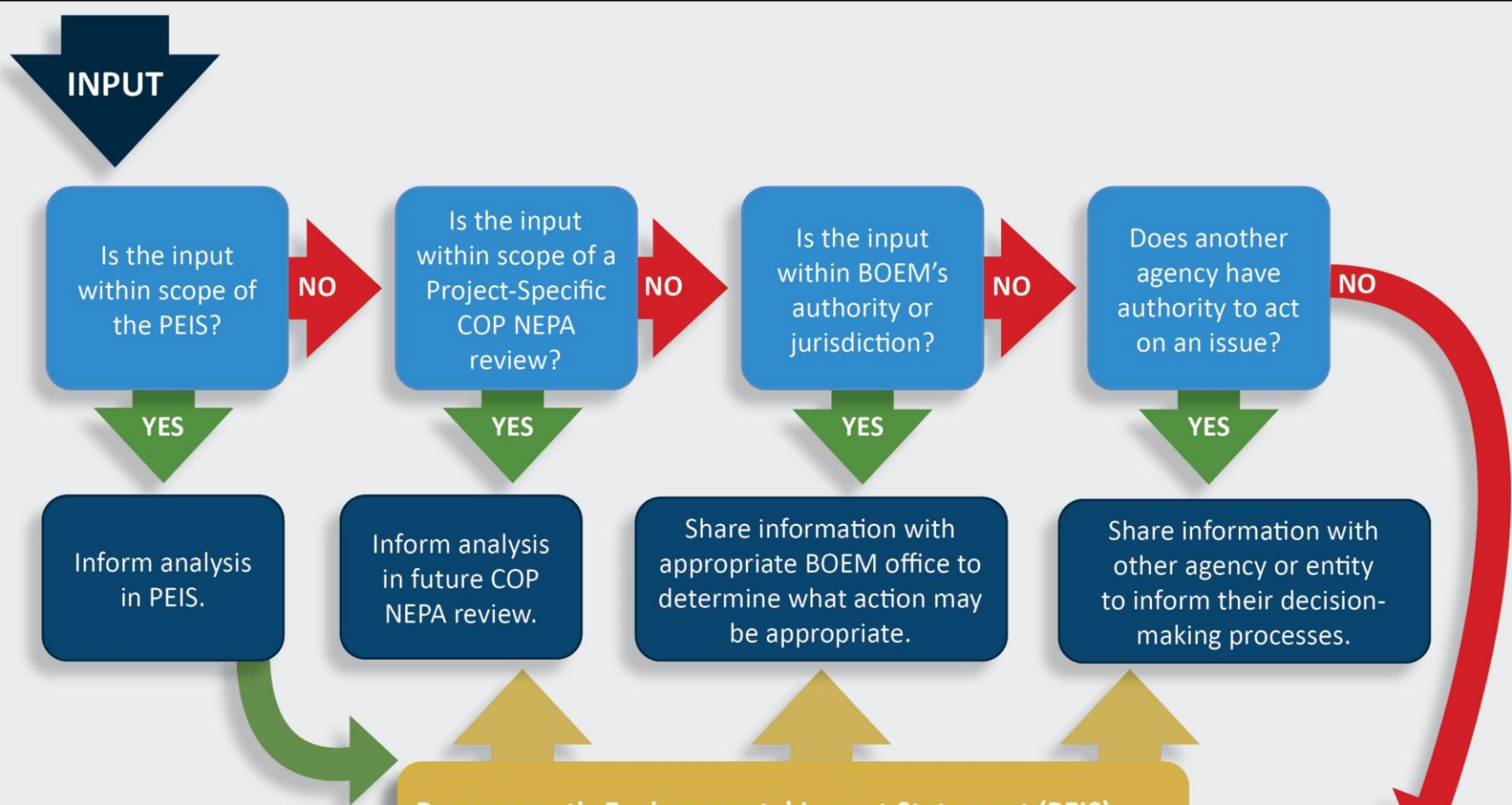
Identifying potential regional impacts and affected areas

Participants were asked about potential impacts from lease development activity.

Potential impacts identified fell into following general categories:

- Air quality
- Commercial fishing
- Equitable energy distribution
- Impacts to port communities
- Inclusivity of local communities
- Increased emissions
- Labor and workforce
- Recreational fishing and boating
- Visual





Acronym	Definition
AMMM	Avoidance, minimization, mitigations, and monitoring
BOEM	Bureau of Ocean Energy Management
COP	Construction and Operations Plan
NEPA	National Environmental Policy Act
NYB	New York Bight
PEIS	Programmatic Environmental Impact Statement

Programmatic Environmental Impact Statement (PEIS)
 The PEIS will analyze potential impacts of actions; alternatives; and AMMM measures.

- The PEIS analysis will inform the decision on whether to apply programmatic avoidance, minimization, mitigation, and monitoring measures BOEM may require as conditions of approval on COPs for the six NYB lease areas and identify measures that should be considered during site-specific NEPA reviews.
- PEIS will support BOEM's review of COPs in NYB lease area and supports other agencies reviews and decisions.

Share information through Environmental Justice Forums for participants to consider.

Review Input Status Report Snapshot



BOEM New York/New Jersey Environmental Justice Roundtable and Forum Input Progress Report for New York Bight Programmatic Environmental Impact Statement

Introduction

BOEM is preparing a Programmatic Environmental Impact Statement (PEIS) for offshore wind development in the New York Bight lease areas. To support the PEIS and to inform decision making on offshore wind planning and development in the New York / New Jersey area, BOEM hosted an Environmental Justice (EJ) Roundtable/Coercing on Offshore Wind in the New York/New Jersey Region on July 21, 2022. Following the Roundtable, BOEM established a series of quarterly forum meetings to continue engagement on environmental justice issues.

At the Roundtable, BOEM heard from federal and state partners and community-based organizations who serve or work with environmental justice and underserved communities. Participants shared ideas on potential issues and impacts that may affect environmental justice and underserved communities from offshore wind energy development in the New York / New Jersey area.

Much of information provided in the Environmental Justice Roundtable Coercing and Forums will inform the New York Bight PEIS. Other information and concerns shared through the series will likely be applicable to BOEM's reviews of Construction and Operations Plans submitted by lessees, and some information will likely be of interest to other federal and state partners.

Purpose

This Input-Action Report is intended to communicate to EJ Roundtable and Forum participants how information they share with BOEM is incorporated into decision-making processes. This initial status report reflects information on potential environmental justice impacts identified during the July 2022 New York / New Jersey Environmental Justice Roundtable Coercing. Subsequent status reports will include additional information provided at quarterly forums.

Information Flow Process

It is BOEM's intent that all input shared in the New York / New Jersey EJ Roundtable and Forums be shared with appropriate entities, agencies, and groups that address the issues. BOEM's jurisdiction and authority are addressed in BOEM's National Environmental Policy Act (NEPA) documents. In the context of incorporating information into the New York Bight PEIS, BOEM considers whether the input or issue is within the scope of the PEIS, that is, relevant to environment and human setting of the New York Bight or to potential impacts of the project. The input may be more applicable to address when reviewing project-specific Construction and Operations Plans. BOEM also considers whether it has authority to address an issue or whether another entity such as another federal or state agency can address an issue under its mission and authority. Additionally, some of the information shared in the EJ

1



Roundtable and Forums may be informative to lessees or to community-based organizations and other organizations working on environmental justice issues.

BOEM considers a number of questions to process input provided through the EJ Roundtable and Forums, as shown in Figure 1.

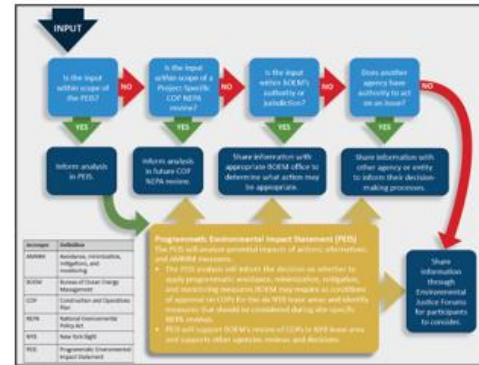


Figure 1: Information Flow Process for Input Provided for the New York Bight PEIS

Input and Progress from July 2022 Environmental Justice Roundtable

During the Roundtable event, participants were asked to provide input on additional potential impacts because of the New York Bight wind energy development leasing process. Participants provided input in a virtual whiteboard brainstorming exercise (Miro board; Figure 2). The potential impacts identified fall into the following general categories:

- Air quality
- Commercial fishing
- Equitable energy distribution
- Impacts to port communities
- Inclusivity of local communities

2



- Increased emissions
- Labor and workforce, and equity in contracting
- Recreational fishing and boating
- Visual impacts



Figure 2: Miro Board Ideas Shared at July 21, 2022 EJ Roundtable

Input Tracking and Status

BOEM has shared the above issues, including the Miro board, with the New York Bight PEIS team and is currently working through addressing many of the concepts. The following table indicates progress and status of BOEM's processing of these issues identified above during the July 21, 2022 EJ Roundtable. BOEM will update status of these issues and additional input and issues from each EJ Forum throughout the development of the PEIS.

Issue	Progress	Reasoning	Status
Impacts of emissions on air quality	BOEM is analyzing impacts to EJ communities from emissions in the PEIS, relying on analysis of overall air quality impacts.	Applicable to the PEIS	Draft PEIS in progress
Impacts on commercial fishing	BOEM is: <ul style="list-style-type: none"> • analyzing impacts on commercial fishing, and • exploring data sources and methods to analyze impacts on fishing communities in the PEIS 	Applicable to the PEIS	Draft PEIS in progress

3



Issue	Progress	Reasoning	Status
Equitable energy distribution	BOEM will explore other partners and agencies with responsibilities or program areas that address energy distribution and will share the findings at a future NY/NJ EJF.	Applicable to other state and federal partners, outside of BOEM's jurisdiction.	Exploring
Impacts to port communities	BOEM is analyzing impacts to communities near ports in the PEIS. Findings from PEIS that are relevant to other federal and state permitting agencies will be shared as applicable.	Applicable to PEIS. Applicable to other agencies.	PEIS draft in progress. Exploring information sharing.
Inclusivity of local communities	BOEM is exploring and seeking collaboration on methods to increase engagement for future public comment periods.	Applicable to all	Continual
Labor and workforce, equity in contracting	<ul style="list-style-type: none"> • BOEM is analyzing economic impacts, including employment, PEIS. • BOEM will share concerns about contracting equity and workforce development with other entities, including lessees. 	Applicable to PEIS. Applicable to other agencies and lessees.	Draft PEIS in progress. Exploring information sharing.
Recreational fishing and boating	BOEM is analyzing impacts to recreational fishing and boating in the PEIS.	Applicable to PEIS	Draft PEIS in progress
Visual impacts	BOEM will consider visual impacts in the PEIS.	Applicable to PEIS	Draft PEIS in progress

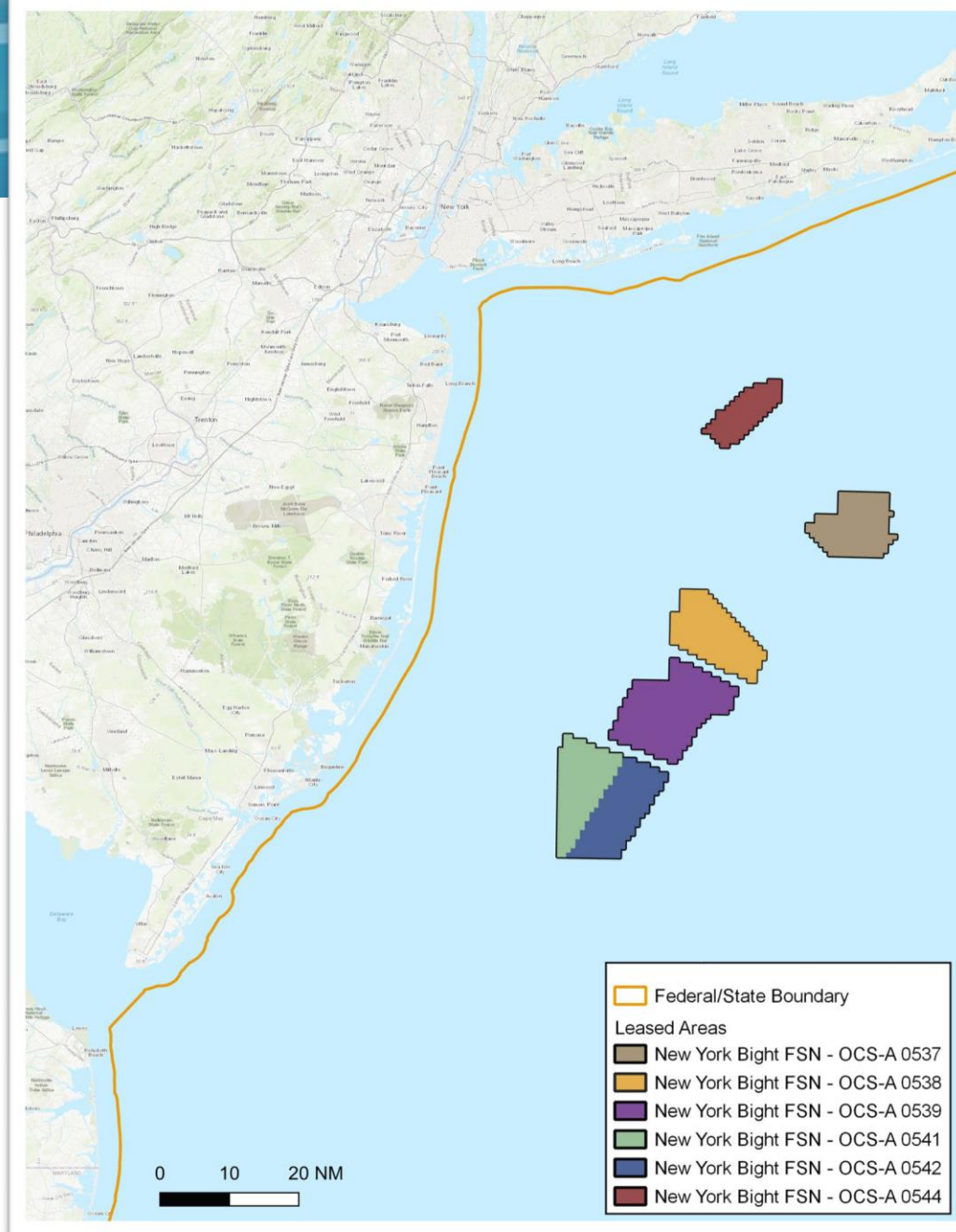
4



Programmatic Environmental Impact Statement Discussion

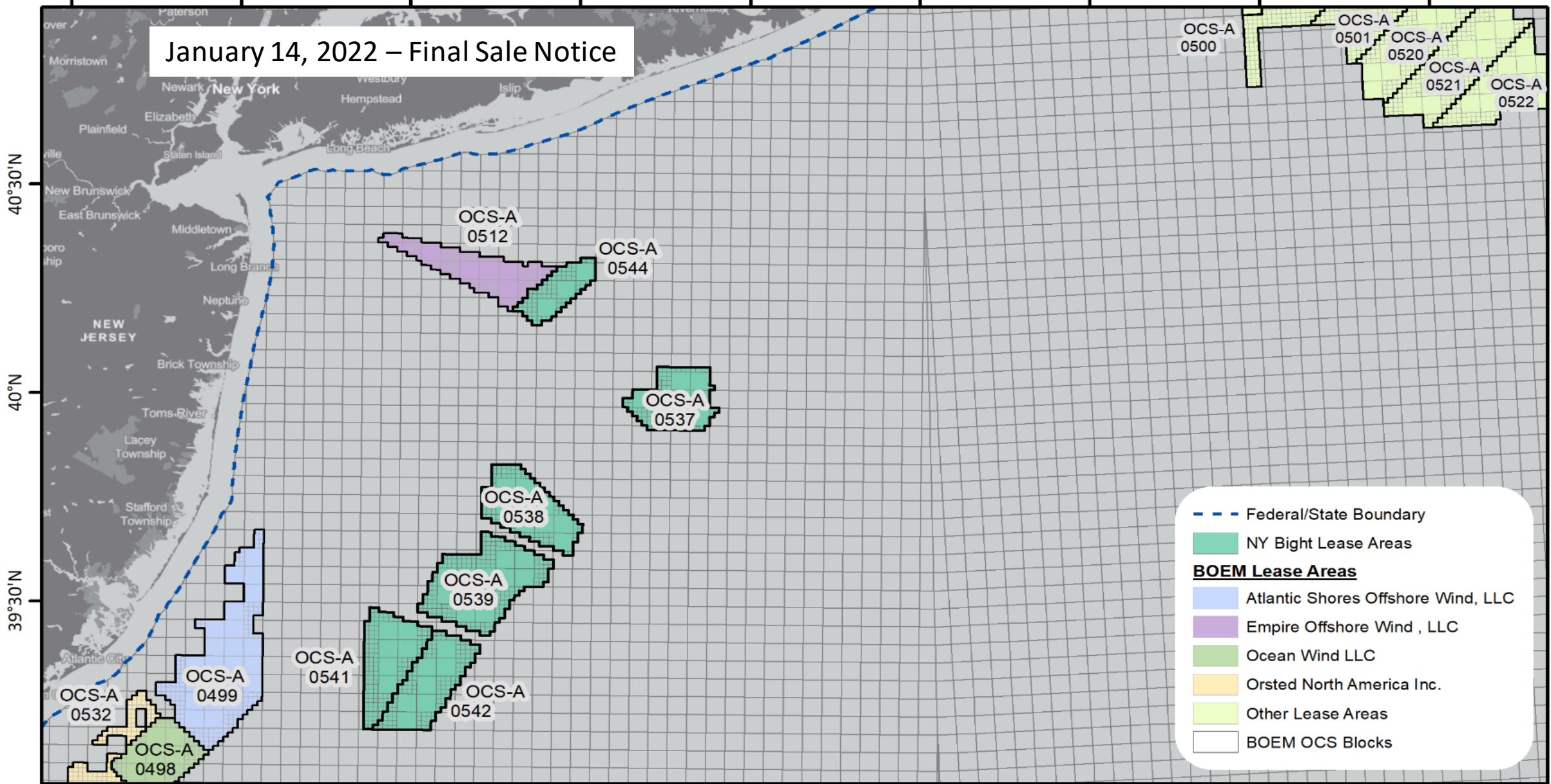
New York/New Jersey Lease Areas

- BOEM is drafting a Programmatic Environmental Impact Statement (PEIS) for the New York Bight lease areas.
- 6 lease areas:
 - OCS-A-0537 - OW Ocean Winds East, LLC (Blue Point)
 - OCS-A-0538 - Attentive Energy LLC
 - OCS-A-0539 - Bight Wind Holdings, LLC (Community Offshore Wind)
 - OCS-A-0541 - Atlantic Shores Offshore Wind Bight, LLC
 - OCS-A-0542 - Invenergy Wind Offshore LLC
 - OCS-A-0544 - Vineyard Mid-Atlantic LLC



74°30'W 74°W 73°30'W 73°W 72°30'W 72°W 71°30'W 71°W 70°30'W

January 14, 2022 – Final Sale Notice

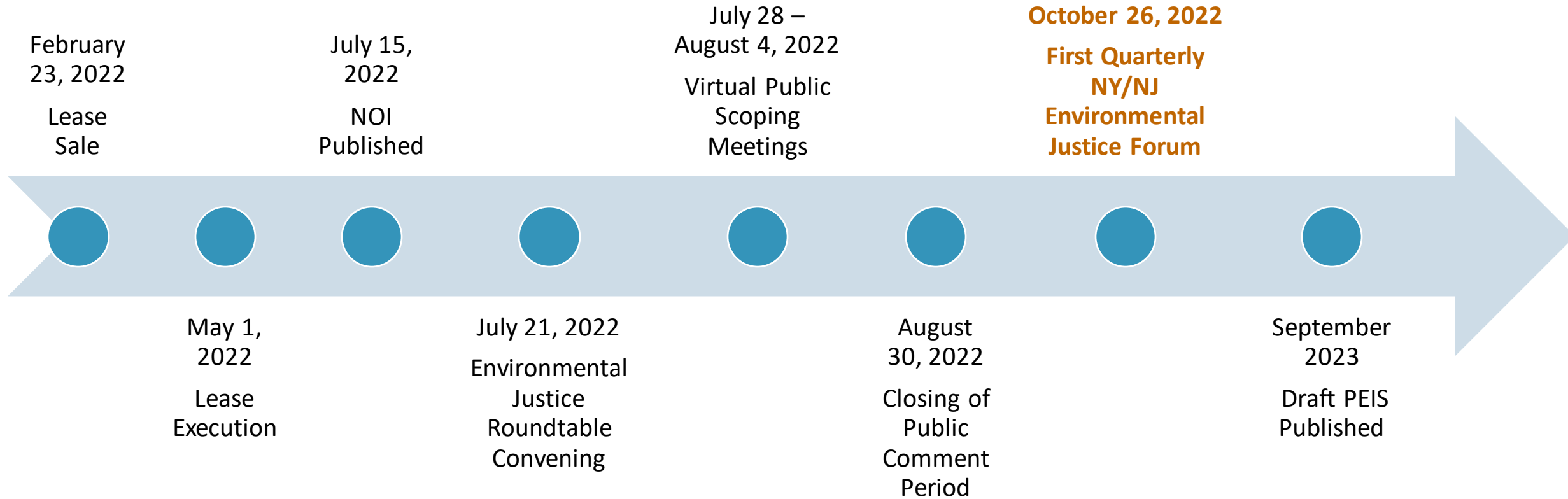


- Federal/State Boundary
- NY Bight Lease Areas
- BOEM Lease Areas**
- Atlantic Shores Offshore Wind, LLC
- Empire Offshore Wind, LLC
- Ocean Wind LLC
- Orsted North America Inc.
- Other Lease Areas
- BOEM OCS Blocks

OREP-2021-1049



New York/New Jersey Lease Area Timeline



Objectives of the NY Bight PEIS



Analyze regional affected environment and environmental consequences



Conduct a focused, regional cumulative analysis



Establish a framework for tiering of project-specific environmental analyses



Identify, analyze, and adopt (if appropriate) programmatic avoidance, minimization, mitigation, and monitoring measures



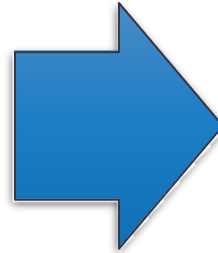
Provide predictability and consistency to cooperating agencies, partners, and developers



Tiering Approach

New York Bight Programmatic EIS (Tier 1)

- Overall **regional analysis** of potential impacts of a representative project
- Identify, analyze, and adopt, where appropriate, programmatic avoidance, minimization, mitigation, and monitoring measures
- Robust cumulative analysis



COP-specific NEPA (Tier 2)

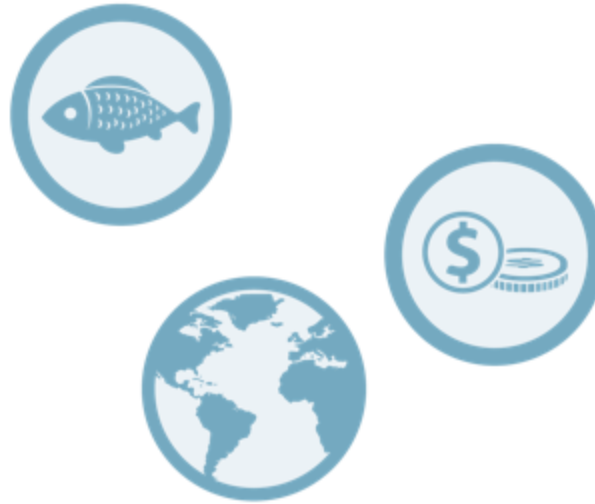
- Incorporate the analysis done in the Programmatic EIS by reference where applicable
- Focus on **site-specific impacts** of approving a particular COP
- Additional avoidance, minimization, mitigation, and monitoring measures
- Approve, approve with modifications, or disapprove the COP



Environmental and Socioeconomic Resources Analyzed in PEIS

Biological

- Avian and Bat Species
- Benthic Resources
- Coastal Habitat and Fauna
- Finfish, Invertebrates and Essential Fish Habitat (EFH)
- Marine Mammals
- Sea Turtles
- Wetlands and Other Waters of the U.S.



Physical

- Air Quality
- Water Quality

Socioeconomic

- Commercial and For-Hire Recreational Fishing
- Cultural Resources
- Demographics, Employment, and Economics
- Environmental Justice
- Land Use and Coastal Infrastructure
- Navigation and Vessel Traffic
- Recreation and Tourism
- Other Uses
- Scenic and Visual Resources



Potential Impacts to EJ Communities

Potential public health and safety impacts

- e.g., air quality, noise, lighting

Changes in the local economy

- e.g., tourism

Impacts to jobs and income

- e.g., revenue effects

Changes in spatial access

- e.g., land use, access to places of historical/cultural significance

Changes in resource access

- e.g., fishing living and non-living resources, subsistence

Note:
These are
preliminary



Breakout Room Discussions

Breakout Room Discussion Prompts – Part One

Discuss **local and regional issues** and information relevant to environmental justice populations in New York and New Jersey to inform how the PEIS approaches **community identification and characterization**.

For example:

- What are important coastal areas to you or the communities you serve?
- What are existing environmental stressors in your area?
- What are suggestions for localized data sources?
- What communities do you know are underserved?



Breakout Room Discussion Prompts – Part Two

Discuss **potential impacts** of offshore wind activities, including **both benefits and burdens** to environmental justice populations. For example:

- Would **space-use conflicts** in nearshore or offshore areas impact members of environmental justice or underserved communities? If so, how?
- What about impacts to **coastal viewsheds**?
- What about impacts from **onshore infrastructure** (e.g., cable emplacement and substations)?
- What about impacts from **increased activity at ports**?
- What about impacts to **health and/or safety**?



EJF Engagement, Coordination, and Process Check-in

Process Considerations for Discussion

Are there any suggested modifications ahead of the next Forum (Wednesday, January 25, 2022, from 10:30 a.m. - 12:30 p.m. ET)?

Consider the following:

1. Time to review and provide input on the materials
2. The format of the Forum
3. Pre- and post-Forum activities and material dissemination
4. Meeting the intention of the Forum and stated goals
5. Agenda topics for future Forums and parking lot items
6. Other items?



Are there communities we should be aware of, and do you know of any organizations we should be contacting?

Have you visited BOEM's virtual meeting room for the New York Bight Programmatic EIS? Have you seen the EJ fact sheet? Did it address things of concern to you or provide info that you find valuable?

Yes, I've visited the virtual meeting room and have seen the EJ fact sheet, and think they meet information needs.

Yes, I've visited, but recommend major changes to meet information needs.

No, I don't know where to find these, but would like to see them.

No, I'm not interested in seeing them.

I'm not sure.

Are there items you would like to have discussed today that we didn't?

Was this meeting a good use of your time? Do you feel like your input was heard?

Yes.

No.

Somewhat.

Contact Information

For further input and discussion: environmental.justice@boem.gov

Atlantic offshore wind environmental justice engagement team:

Holly Fowler | Program Analyst

Holly.Fowler@boem.gov

Laura Mansfield | Social Scientist

Laura.Mansfield@boem.gov

Sara Parkison | Engagement Advisor for Underserved Communities

Sara.Parkison@boem.gov



Thank you!

BOEM

Bureau of Ocean Energy
Management

BOEM.gov



Holly Fowler | holly.fowler@boem.gov

Laura Mansfield | laura.mansfield@boem.gov

Sara Parkison | sara.parkison@boem.gov